

**Peterson's**

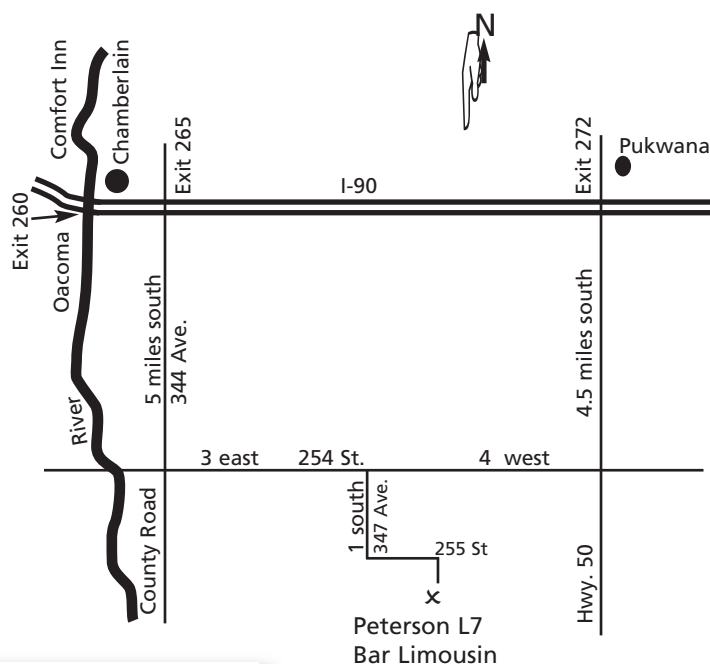
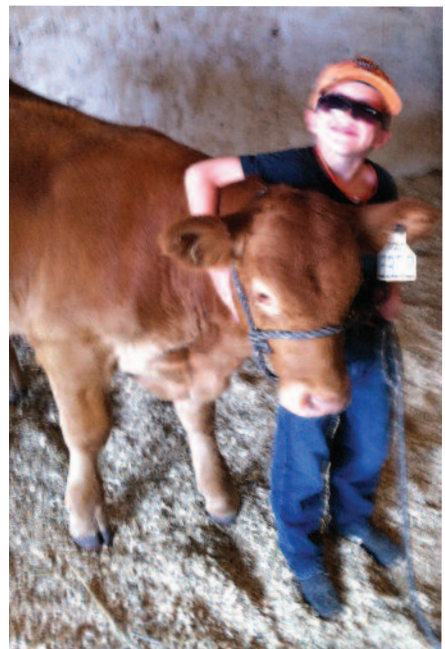
**L7  
Bar**

**Limousin**

**37th Annual  
Limousin Production Sale  
April 8, 2015  
Pukwana, SD**



## Directions to the ranch...



## How to analyze our performance information . . .

### **BW - weight of calf at birth**

All the births were scored to calving ease with:

- A - Unassisted
- B - Some Help
- C - Mechanical Pull
- D - Caesarean
- E - Abnormal Presentation

**WW - weaning weight** - This is the weaning weight of the cattle adjusted to 205 days of age. WW is a good indication of early growth of a calf and milking ability of the mother.

**YW - yearling weight** - This is the yearling weight of the animal adjusted to 365 days of age with at least 150 days between the actual weaning weight and the time of recording the actual yearling weight.

**WDA - weight per day of age** - This is a tool for you to use in your selection because rate of growth is heritable. However, WDA could have a direct relation to how hard the animals are fed, but it also gives you an idea about growth potential especially when compared to weaning and yearling weight.

**SC - scrotal measurement** - Measured in centimeters. By Doc Walters, scrotal measurements are actual not adjusted.

**Scan data on yearling bulls is adjusted to 365 days.**

# Peterson's L7 Bar Limousin

Welcome,

Don't you love to pick up the latest livestock magazine and see what the newest words are!

Efficiency! Moderate! Sustainable!

As I read these articles it intrigues me how the very things that kept us in business for the last 45 years are the new buzz words. We think about the cows that calf in a storm and still saves the calf, the bulls out working in hot, dry conditions, the feedlot cattle in muddy lots that have the most efficient feed conversion and the highest yield-grade and dressing percentage. These are the very things that have kept the Limousin breed here for 45 years and are still the most needed in the industry.

The cattle you will see April 8th are real world tested and proven. The proof is that we are still here.

If you have any questions or thoughts feel free to talk to Rod or Cade, we love to talk Limousin and about our program. Enjoy these good times in the beef cattle industry as we have all worked hard to be here in this exciting time.

We are offering a select group of fall bulls for the people who want bulls with a little more age. These are not left over 2's! We have purebred and Lim-Flex cattle in the offering to meet all your needs. We are also offering a select group of heifers from the heart of our replacement program.

Our main goal is to keep you happy. If you have a problem tell us so we can make it right with you. Buy with confidence, the cattle are fully guaranteed.

We make delivery swings to central locations in South Dakota and surrounding states. We will work with you in every way to get your cattle delivered to you. Some of our customers want to get their bulls earlier so for those people we are offering a \$50 per head discount for cattle loaded out sale day. If you plan to use a bull AI, please indicate on the invoice so we can DNA-type the dam to meet NALF regulations.

We are once again offering a 5% discount on all purchases of 5 head or more.

Hope to see you Wednesday April 8. Be our guest for a complimentary lunch starting at 11:30.

For more information contact us anytime. Thank you for your interest in our program.

The Peterson Families

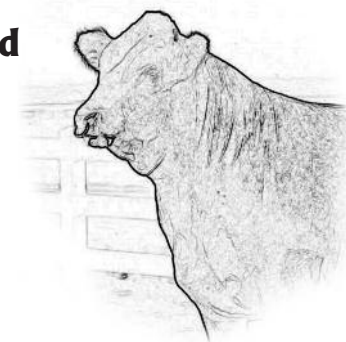
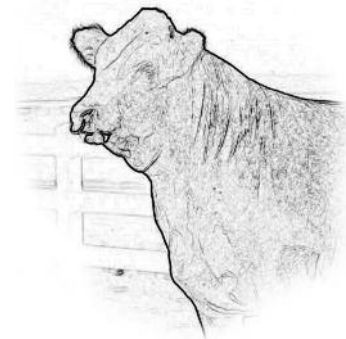
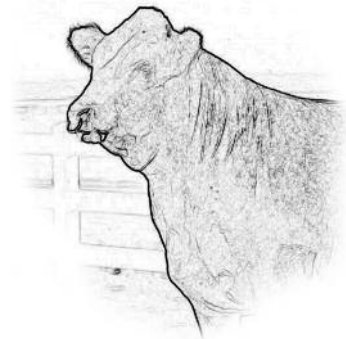
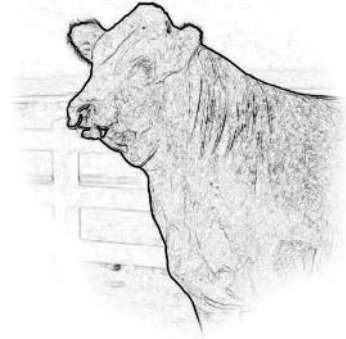
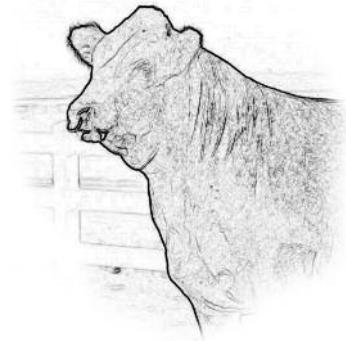


**One  
Family**



**Committed  
Program**

**...Built From the  
Ground Up**





Peterson's
L7
Bar
Limousin

*37th Annual*  
**Annual Production Sale**

**1:00 p.m., Wednesday, April 8, 2015  
 at the ranch, Pukwana, SD**

**Sale Day Phone: 605/894-4470**

**Selling 65 Lots**  
**52 Yearling Bulls**  
**and 7 18-Month-Old - Mostly Polled Red & Black**  
**6 Open Heifers**

**Location:** At the ranch located 5 south, 3 east, 1 south, 1/4 east off I-90, exit 265.

**Sale Day Phone:** 605/894-4470, 605/730-4470, 605/730-0705 , 605/730-4214 or 918/625-2500

**Sale Headquarters:** AmericInn, Chamberlain, SD .....605/234-0985

**Cattle Location:** The cattle will be at the ranch south of Chamberlain. You are welcome to come and inspect the cattle anytime.

**Special Guests:**

- Weston Geppert, Limousin World.....605/933-1387
- Merlyn Siegfried, Cattle Business Weekly.....605/868-9266
- Jeff Russo, Laura's Lean Beef .....605/428-4182
- Dean Summerbell, Heartland Limousin Ass'n. ....612/963-3799

**Airports:** Chamberlain has a 3,700 foot hard surfaced runway. Commercial flights are available at Pierre and Sioux Falls. Call us if we can be of assistance.

**Auctioneer:** C.K. Sonny Booth.....918/542-1587

**Sale Consultant:**

- Mark Smith, Grassroots Genetics & Consulting .....515-965-1458 or Cell- 515/229-5227
- MC Marketing .....402-350-3447

**Free lunch on sale day!**

Please bring this catalog with you to the sale.

**Ultrasound and Scrotal Measurements Available Sale Day.**

**Volume Discount: 5% on 5 head or more**  
**\$50.00 per head discount for cattle hauled sale day**

**Peterson's L7 Bar Limousin**

**Rod and Wendy Peterson & Family**  
**34715 255th St.**  
**Pukwana, SD 57370**

**email: cepeterson@midstatesd.net**  
**Ranch Phone: 605-894-4470**

**Cell Numbers: Rod - 605/730-4470, Cade - 605/730-0705, Chisum - 605/730-4214, or Quin - 918/625-2500**

**Website: petersonsL7bar.com**

# Spring 2015 EPD Statistics and Trends

## 2013-2014 Born Calves

Percentile Level	Calving Ease Direct	Birth Weight	Weaning Weight	Yearling Weight	Milking Ability	Calving Ease Maternal	Scrotal Circum.	Stayability	Docility	Carcass Weight	Ribeye Area	Yield Grade	Marbling Score	\$MTI
1	16	-3.0	86	128	37	11	0.8	28	39	51	0.99	-0.38	0.25	62.0
2	16	-2.6	83	123	35	11	0.8	27	38	47	0.92	-0.35	0.21	60.0
3	15	-2.2	82	120	35	10	0.7	27	37	46	0.88	-0.34	0.18	59.0
4	14	-2.0	81	118	34	10	0.7	26	36	44	0.85	-0.33	0.16	58.0
5	14	-1.7	80	117	33	10	0.6	26	36	43	0.84	-0.32	0.14	58.0
10	12	-1.0	77	112	31	9	0.5	25	34	39	0.77	-0.29	0.10	56.0
20	10	0.0	73	105	29	8	0.4	23	31	35	0.68	-0.26	0.04	53.0
30	9	0.8	70	101	28	7	0.3	22	28	31	0.62	-0.23	-0.01	51.0
40	8	1.4	67	96	26	6	0.2	20	26	29	0.56	-0.21	-0.04	49.0
50	7	1.9	65	92	25	6	0.2	19	24	26	0.51	-0.18	-0.07	48.0
60	6	2.4	63	88	24	5	0.1	18	21	24	0.46	-0.16	-0.10	46.0
70	5	2.8	60	84	23	4	0.0	17	19	21	0.40	-0.13	-0.14	45.0
80	4	3.3	57	79	22	4	-0.1	16	15	18	0.35	-0.09	-0.17	43.0
90	3	3.9	53	71	20	2	-0.2	14	10	14	0.27	-0.05	-0.21	41.0
Count	16,059	16,059	16,059	16,059	16,059	16,059	10,843	706	11,545	16,059	16,059	16,059	16,059	16,059
Average	7.2	1.7	65.0	91.9	25.5	5.6	0.1	19.4	22.8	26.4	0.51	-0.18	-0.06	48.2
Std Dev	3.5	1.9	9.1	15.6	4.4	2.7	0.3	4.0	9.0	10.0	0.19	0.09	0.12	5.5
Min	-3.9	-6.3	29.8	33.2	9.4	-12.7	-1.0	7.0	-13.3	-15.6	-0.23	-0.58	-0.69	25.0
Max	19.8	10.6	107.2	173.4	42.3	13.5	1.4	32.5	43.0	82.0	1.37	0.22	0.59	74.0

## 2013-2014 Born Lim-Flex® Calves

Upper Percentile Level	Calving Ease Direct	Birth Weight	Weaning Weight	Yearling Weight	Milking Ability	Calving Ease Maternal	Scrotal Circum.	Stayability	Docility	Carcass Weight	Ribeye Area	Yield Grade	Marbling Score	\$MTI
1	17	-3.6	86	134	36	11	1.1	26	34	53	1.00	-0.32	0.84	81.0
2	16	-2.8	83	129	34	11	1.0	25	31	50	0.93	-0.29	0.77	78.0
3	16	-2.4	82	127	34	10	0.9	24	30	48	0.89	-0.27	0.72	77.0
4	15	-2.2	81	125	33	10	0.8	24	29	47	0.86	-0.26	0.69	75.0
5	15	-2.0	79	123	33	10	0.8	24	29	46	0.84	-0.25	0.66	74.0
10	13	-1.3	76	118	31	9	0.7	21	26	42	0.75	-0.21	0.58	71.0
20	12	-0.4	72	112	29	8	0.5	20	22	38	0.64	-0.16	0.47	67.0
30	11	0.1	70	108	28	8	0.4	19	20	35	0.57	-0.13	0.39	64.0
40	10	0.5	68	104	26	7	0.4	17	18	33	0.51	-0.10	0.33	62.0
50	10	0.9	66	101	25	7	0.3	17	16	31	0.45	-0.08	0.28	60.0
60	9	1.3	64	97	24	6	0.2	16	14	28	0.40	-0.05	0.23	58.0
70	8	1.7	61	93	23	5	0.1	15	12	26	0.35	-0.03	0.17	56.0
80	7	2.2	59	88	22	5	0.1	15	10	23	0.29	0.00	0.11	54.0
90	6	2.8	54	82	20	4	-0.1	13	7	19	0.20	0.04	0.03	51.0
Count	11,046	11,046	11,046	11,046	11,046	11,046	6,882	242	6,660	11,046	11,046	11,046	11,046	11,046
Average	9.6	0.8	65.4	100.2	25.3	6.4	0.3	17.0	16.1	30.4	0.46	-0.08	0.29	60.7
Std Dev	3.0	1.7	8.6	14.4	4.4	2.3	0.3	3.5	7.5	9.5	0.21	0.10	0.21	7.9
Min	-3.5	-7.8	24.3	31.8	7.6	-7.7	-1.7	9.7	-13.9	-13.1	-0.30	-0.46	-0.33	32.0
Max	22.8	9.6	98.2	158.1	42.9	14.5	1.7	27.7	41.5	69.5	1.59	0.36	1.16	92.0

### Ask the experts

#### – Limousin cross calves work

*“In these times when the margin on feeding cattle is so slim, the difference between YG 1-2 and YG 3 can be the difference in a profit or loss on a set of calves. We run a lot of Limousin influenced cattle through our barn and they consistently top the market and make our customers money.”*

*- Jackie Moore, Owner/Operator  
Joplin Regional Stockyards, Missouri*

*Moore is a lifelong cattleman who knows the ins and outs of the cattle industry. When limousin genetics come through his sale barn, particularly in a hybrid package, he can pretty much guarantee that those cattle are going to grow more efficiently and have a higher cutability than their earlier maturing counter parts. Day in and day out, Moore has the opportunity to see thousands of cattle marketed across the midwest, and he knows what type of investments are going to yield the highest return for his customers.*

# ~ Reference Sires ~



## WULFS XCELLSIOR X252X

WULFS SIRLOIN 3172S

WULFS MISSIVE 2258M

COLE WULF HUNT  
WULFS NEGOTIABLE 3172N  
LVLS POLLED BLACK JACK  
WULFS FAITH 6501F

EPDs	CED	BW	WW	YW	MA	SC	DOC	CW	REA	YG	Marb
14	-1.5	72	100	30	.1	29	26	.98	-.23	.37	

A past high seller out of the Wulf program. His calves have been impressive. He moderates his offspring and adds muscle.



## L7 Xenon 0029X

HC FINAL TIME 407

MISS L7 520R

HC OVERTIME 972  
HC POLLED CANDY 763  
COLE WULF HUNT  
MISS L7 817H

EPDs	CED	BW	WW	YW	MA	SC	DOC	CW	REA	YG	Marb
4	3.4	66	95	24	.2	23	31	.88	-.23	-.22	

A herd sire from our program that is now deceased. He added length and muscle to his calves.



## Wulfs Guardian 5074G

WULFS RAMBLER 8400X

WULFS EXAMPLE 5074E

POLLED PACK LEADER 1182U  
T TRI PURECHO 100K  
WULF'S CHOPPER 1014C  
MISS WOLFETTE 2151B

EPDs	CED	BW	WW	YW	MA	SC	DOC	CW	REA	YG	Marb
12	-1.7	56	82	18	-0.6	34	16	.86	-.33	-.45	

Guardian is a proven calving ease sire. His calves are known for muscling and growth. They also have good carcass and maternal traits. He has left some nice daughters.



## L7 XTREME 0067X

HC FINAL TIME 407

L7 CHILI PEPPER 080K

HC OVERTIME 972  
HC POLLED CANDY 763  
CABIN CREEK BLACKMAIL 69F  
MAX L7 600F

EPDs	CED	BW	WW	YW	MA	SC	DOC	CW	REA	YG	Marb
2	3.8	60	88	18	.4	17	28	.72	-.27	-.06	

A herd sire from our program out of Chili Pepper, Xtreme adds the muscle to his calves.



## MRL X-RATED 014X

CTCA BUCKEYE BULL 8261U

MRL TASTE OF COUNTRY 790T

HUNT CORNHUSKER 225N  
LESF 5201R  
BADGER HILL FELIX  
MRL JACUZZI

EPDs	CED	BW	WW	YW	MA	SC	DOC	CW	REA	YG	Marb
5	3.2	95	133	21	.6	26	52	.87	-.18	-.2	

X-Rated is an outcross sire that's making some high performing cattle.



## WULFS UNLIMITED 5035U

HUNT MR JOCK 44J

WULFS REGALE 5035E

LVLS POLLED JUSTICE 0601E  
HUNT MISS GIGGLE 129G  
WULFS GUARDIAN 5074G  
WULFS NURSEMAID 3137N

EPDs	CED	BW	WW	YW	MA	SC	DOC	CW	REA	YG	Marb
3	4.2	88	130	27	0.2	28	53	0.88	-.22	-.45	

This Wulf sired bull is making calves that are long bodied and thick made. Lots of performance in his calves.



## WULFS YUKON TRAIL 8084Y

WULFS WARBONNET 6254W

WULFS UALANEA 8084U

WULFS NOBEL PRIZE 3861N  
WULFS SPIRAL 6254S  
NPM1723912 WULFS NASA 1212N  
WULFS SHARDA 6322S

EPDs	CED	BW	WW	YW	MA	SC	DOC	CW	REA	YG	Marb
12	0.3	61	89	37	-0.7	34	23	.38	-.09	-.16	

Yukon Trail is making long and heavy muscled calves that are moderate at birth.



## SAV BRILLIANCE 807

S A V BISMARCK 5682

S A V BLACKCAP MAY 5270

G A R GRID MAKER  
S A V ABIGALE 0451  
S A V 8180 TRAVELER 004  
S A V MAY 2420

EPDs	CED	BW	WW	YW	MA	SC	DOC	CW	REA	YG	Marb
10	0	53	94	31	1.29	0	34	.77	0	.36	

A popular AI sire from ABS, out of Bismark. We are using him for his calving ease.

**Check our website and DV Auction  
for videos and additional information  
[www.petersonsL7bar.com](http://www.petersonsL7bar.com)**

# ~ 18-Month-old Bulls ~

Trying to meet the needs of some customers, we have started a small group of fall calving cows. This group of cows is low in numbers, but high on quality. Look these September born bulls over closely.

**Lot 1** **LSBL 3066A**  
 PUREBRED, BULL                      DOUBLE BLACK/HORNED  
 9/20/2013                      LSBL 3066A                      NPM2055543

HC FINAL TIME 407  
 L7 XTREME 0067X  
 L7 CHILI PEPPER 080K  
 CABIN CREEK BLACKMAIL 69F  
 L7 JANIE BLACK 319N  
 MISS L7 823H

BW: 80 A	ADJ WW: 726	Adj YW: 1267										
EPDs	CED	BW	WW	YW	MA	SC	DOC	CW	REA	YG	Marb	
3	3.5	59	82	20	N/A	N/A	24	.64	-.26	-.08		

A wide topped, big butted bull out of a real good Blackmail cow.

**Lot 2** **L7 3067A**  
 PUREBRED, BULL                      RED/HORNED  
 9/16/2013                      LSBL 3067A                      NPM2055545

HC FINAL TIME 407  
 L7 XTREME 0067X  
 L7 CHILI PEPPER 080K  
 WULFS GUARDIAN 5074G  
 LMISS L7 726T  
 MISS L7 520R

BW: 78 A	ADJ WW: 679	Adj YW: 1229										
EPDs	CED	BW	WW	YW	MA	SC	DOC	CW	REA	YG	Marb	
8	-0.1	59	83	20	N/A	N/A	18	.78	-.32	-.21		

Don't miss out on this big, stout made red bull.

**Lot 3** **L7 3069A**  
 PUREBRED, BULL                      BLACK/DOUBLE POLLED  
 9/5/2013                      LSBL 3069A                      NPM2055542

WULFS SIRLOIN 3172S  
 WULFS XCELLSIOR X252X  
 WULFS MISSIVE 2258M  
 ROMN JUSTICE  
 MISS L7 805U  
 MISS L7 428P

BW: 92 A	ADJ WW: 681	Adj YW: 1263										
EPDs	CED	BW	WW	YW	MA	SC	DOC	CW	REA	YG	Marb	
8	2.5	81	115	23	N/A	29	41	.77	-.16	.14		

Here's the complete package. He is long, super thick and big mid-dled. Lots of performance.

## 10 Good Reasons to Buy Performance Tested Cattle

- Weaning Weight .....is 30% Heritable
- Feedlot Gain.....is 45% Heritable
- Pasture Gain.....is 30% Heritable
- Efficiency of Gain .....is 40% Heritable
- Final Feedlot Weight.....is 60% Heritable
- Carcass grade .....is 40% Heritable
- Ribeye Area.....is 50% Heritable
- Tenderness .....is 60% Heritable
- Fat Thickness.....is 45% Heritable
- Retail Products, Pounds.....is 60% Heritable

**Lot 4** **L7 3070A**  
 PUREBRED, BULL                      BLACK/DOUBLE POLLED  
 8/29/2013                      LSBL 3070A                      NPM2055538

WULFS SIRLOIN 3172S  
 WULFS XCELLSIOR X252X  
 WULFS MISSIVE 2258M  
 WULFS GUARDIAN 5074G  
 MISS L7 828U  
 MISS L7 611S

BW: 80 A	ADJ WW: 647	Adj YW: 1193										
EPDs	CED	BW	WW	YW	MA	SC	DOC	CW	REA	YG	Marb	
11	0.1	67	95	24	-0.1	30	26	.81	-.24	.04		

A thick made, big topped, smooth polled bull out of a good cow family.



**Wulfs Xcellsior — Sire of Several Lots**

**Lot 5** **L7 3071A**  
 LIM-FLEX 75% BULL                      DOUBLE BLACK/SCURRED  
 9/1/2013                      LSBL 3071A                      LFM2055539

HUNT MR JOCK 44J  
 WULFS UNLIMITED 5035U  
 WULFS REGALE 5035E  
 MYTTY IN FOCUS  
 MISS L7 885U  
 MISS L7 613

BW: 77 A	ADJ WW: 678	Adj YW: 1296										
EPDs	CED	BW	WW	YW	MA	SC	DOC	CW	REA	YG	Marb	
9	.9	73	110	23	.5	28	36	.57	-.14	-.01		

A stout 3/4 blood with lots of length and thickness.



Cat  
**6**

## L7 3072A

PUREBRED, BULL      RED/DOUBLE POLLED  
9/1/2013      LSBL 3072A      NPM2055531

WULFS SIRLOIN 3172S  
WULFS XCELLSIOR X252X  
WULFS MISSIVE 2258M  
WULFS GUARDIAN 5074G  
MISS L7 904W  
MISS L7 705T

BW: 77 A	ADJ WW: 704	Adj YW: 1282									
EPDs	CED	BW	WW	YW	MA	SC	DOC	CW	REA	YG	Marb
12	-2	69	99	27	.0	29	28	.75	-.21	.06	

A solid, big topped, smooth polled bull with plenty of grow.

Cat  
**7**

## L7 3073A

PUREBRED, BULL      BLACK/DOUBLE POLLED  
9/1/2013      LSBL 3073A      NPM2055537

WULFS SIRLOIN 3172S  
WULFS XCELLSIOR X252X  
WULFS MISSIVE 2258M  
WULFS TITUS 2149T  
MISS L7 087X  
L7 FROSTED COOKIE 083K

BW: 68 A	ADJ WW: 663	Adj YW: 1218									
EPDs	CED	BW	WW	YW	MA	SC	DOC	CW	REA	YG	Marb
9	.6	72	99	22	.2	22	28	.77	-.23	.07	

Another thick made, big topped Xcellsior son.

~ Yearling Bulls ~

Cat  
**8**

## L7 4000B

LIMFLEX 50%, BULL      BLACK/DOUBLE POLLED  
4/20/2014      LSBL 4000B      LFM2055682

DCC 002 OUTLOOK 472  
DUFF STANDOUT 785  
O C C LADY BLACKCAP 753L  
RPLF GALVESTON 416G  
MISS L7 202M  
MISS L7 405D

BW: 89 A	ADJ WW: 700	Adj YW: 1292									
EPDs	CED	BW	WW	YW	MA	SC	DOC	CW	REA	YG	Marb
10	2.1	60	87	25	N/A	N/A	25	.72	-.32	.02	

A long sided, deep bodied Standout son with excellent performance.



Duff Standout — Sire of Lots 8, 22, 64

Cat  
**9**

## L7 4001B

PUREBRED, BULL      DOUBLE BLACK/POLLED  
3/19/2014      LSBL 4001B      NPM2055683

HUNT MR JOCK 44J  
WULFS UNLIMITED 5035U  
WULFS REGALE 5035E  
FSHK JACKSON 538  
MISS L7 301N  
MISS L7 912J

BW: 89 A	ADJ WW: 677	Adj YW: 1203									
EPDs	CED	BW	WW	YW	MA	SC	DOC	CW	REA	YG	Marb
4	3.4	70	99	31	.1	20	33	.57	-.11	-.19	

Another good animal from the 301 cow. Plenty of rib and real long patterned.

Cat  
**10**

## L7 4004B

PUREBRED, BULL      DOUBLE BLACK/DOUBLE POLLED  
3/11/2014      LSBL 4004B      NPM2055677

WULFS WARBONNET 6254W  
WULFS YUKON TRAIL 8084Y  
WULFS UALANEA 8084U  
L7 JOHNNY BLACK 1040L  
MISS L7 412P  
MISS L7 963J

BW: 89 A	ADJ WW: 665	Adj YW: 1238									
EPDs	CED	BW	WW	YW	MA	SC	DOC	CW	REA	YG	Marb
7	2.4	63	87	29	-.4	N/A	24	.56	-.21	-.22	

A heavy muscled, long bull out of a solid Johnny Black cow.

Cat  
**11**

## L7 4005B

PUREBRED, BULL      RED/SCURRED  
4/2/2014      LSBL 4005B      NPM2055678

CTCA BUCKEYE BULL 8261U  
MRL X-RATED 014X  
MRL TASTE OF COUNTRY 790T  
DEVONS THE REAL DEAL  
MISS L7 422P  
MISS L7 823H

BW: 91 A	ADJ WW: 737	Adj YW: 1259									
EPDs	CED	BW	WW	YW	MA	SC	DOC	CW	REA	YG	Marb
7	2.3	70	92	23	.5	N/A	27	.60	-.24	-.21	

A real nice high performance bull out of X-Rated.

*“The amount of feed required per unit of retail beef produced is the ultimate biological measure of beef production efficiency. Limousin calves produced the same amount of trimmed retail product with roughly one-half as much feed weaning to harvest as compared to Angus and Hereford calves.”*

*Gregory et al., J. Anim. Sci. 72:1154*



**Lot 12****L7 4006B**

PUREBRED, BULL	DOUBLE BLACK/POLLED
3/12/2014	LSBL 4006B NPM2055674

HUNT MR JOCK 44J  
 WULFS UNLIMITED 5035U  
 WULFS REGALE 5035E  
 WULFS GUARDIAN 5074G  
 MISS L7 425P  
 MISS L7 205M

BW: 89 A	ADJ WW: 748	Adj YW: 1285									
EPDs	CED	BW	WW	YW	MA	SC	DOC	CW	REA	YG	Marb
6	2.2	72	105	28	-.2	26	35	.66	-.17	-.33	

Lots of performance packed in this thick, long made Unlimited son.

**Lot 12****Lot 13****L7 4010B**

PUREBRED, BULL	RED/POLLED
3/18/2014	LSBL 4010B NPM2055668

HUNT MR JOCK 44J  
 WULFS UNLIMITED 5035U  
 WULFS REGALE 5035E  
 CARROUSELS LOW RIDER  
 MISS L7 516R  
 MISS L7 344N

BW: 89 A	ADJ WW: 667	Adj YW: 1246									
EPDs	CED	BW	WW	YW	MA	SC	DOC	CW	REA	YG	Marb
6	2.6	70	97	26	-.2	20	31	.80	-.29	-.29	

Another solid made Unlimited son.

**Lot 14****L7 4011B**

PUREBRED, BULL	DOUBLE BLACK/DOUBLE POLLED
4/4/2014	LSBL 4011B NPM2055670

HC FINAL TIME 407  
 L7 XENON 0029X  
 MISS L7 520R  
 ROMN JUSTICE  
 MISS L7 523R  
 MISS L7 936J

BW: 91 A	ADJ WW: 702	Adj YW: 1318									
EPDs	CED	BW	WW	YW	MA	SC	DOC	CW	REA	YG	Marb
4	2.9	65	95	23	N/A	N/A	30	.60	-.17	-.16	

The Xenon calves have not disappointed. They are thick made with plenty of rib. This one is a half brother to one of last years popular lots.

**Lot 15****L7 4012B**

PUREBRED, BULL	RED/DOUBLE POLLED
3/16/2014	LSBL 4012B NPM2055664

WULFS WARBONNET 6254W  
 WULFS YUKON TRAIL 8084Y  
 WULFS UALANEA 8084U  
 OKLF LINEBACKER 341L  
 MISS L7 616S  
 MISS L7 961J

BW: 90 A	ADJ WW: 689	Adj YW: 1236									
EPDs	CED	BW	WW	YW	MA	SC	DOC	CW	REA	YG	Marb
10	1.6	64	89	34	-.6	21	24	.49	-.18	-.13	

This smooth polled Yukon Trail son was heavy at weaning, goes back to the 607 cow family.

**Lot 16****L7 4013B**

PUREBRED, BULL	DOUBLE BLACK/DOUBLE POLLED
3/12/2014	LSBL 4013B NPM2055665

WULFS WARBONNET 6254W  
 WULFS YUKON TRAIL 8084Y  
 WULFS UALANEA 8084U  
 ANLC MONOPOLY 2778M  
 MISS L7 622S  
 MISS L7 160L

BW: 86 A	ADJ WW: 603	Adj YW: 1160									
EPDs	CED	BW	WW	YW	MA	SC	DOC	CW	REA	YG	Marb
7	2.4	60	86	27	-.3	15	24	.65	-.22	-.22	

A long patterned, double black, double polled bull out of a good Monopoly cow.

**Lot 17****L7 4014B**

PUREBRED, BULL	BLACK/DOUBLE POLLED
3/25/2014	LSBL 4014B NPM2055662

WULFS SIRLOIN 3172S  
 WULFS XCELLSIOR X252X  
 WULFS MISSIVE 2258M  
 GPFF BLAQUE RULON  
 MISS L7 625S  
 MISS L7 941J

BW: 87 A	ADJ WW: 673	Adj YW: 1314									
EPDs	CED	BW	WW	YW	MA	SC	DOC	CW	REA	YG	Marb
10	1.5	71	100	21	.2	22	31	.75	-.17	.14	

A high performing Xcellsior son going back to Cassie.

**Maternal brother to Lot 14**

**Lot 18****L7 4015B**

PUREBRED, BULL RED/HOMO POLLED (T)  
 3/15/2014 LSBL 4015B NPM2055659

WULFS SIRLOIN 3172S  
 WULFS XCELLSIOR X252X  
 WULFS MISSIVE 2258M  
 WULFS GUARDIAN 5074G  
 MISS L7 646S  
 L7 4018P

BW: 89 A	ADJ WW: 788	Adj YW: 1397									
EPDs	CED	BW	WW	YW	MA	SC	DOC	CW	REA	YG	Marb
10	.4	65	91	27	-.1	N/A	24	.75	-.27	.01	

If you're wanting performance than 4015 is your man. He is long patterned, big topped and has lots of thickness in a Homo polled package. Retaining 1/3 semen interest.



Wulfs Unlimited — Sire of Lots 5, 9, 12, 13, 19, 21, 63



Lot 18

**Lot 19****L7 4016B**

LIM-FLEX 75%, BULL DOUBLE BLACK/DOUBLE POLLED  
 3/10/2014 LSBL 4016B LFM2055661

HUNT MR JOCK 44J  
 WULFS UNLIMITED 5035U  
 WULFS REGALE 5035E  
 O C C ANCHOR 771A  
 MISS L7 761T  
 MISS L7 447P

BW: 91 A	ADJ WW: 686	Adj YW: 1254									
EPDs	CED	BW	WW	YW	MA	SC	DOC	CW	REA	YG	Marb
6	2.8	64	95	22	.1	N/A	30	.63	-.29	-.25	

Another chunky Unlimited son.

**Lot 21****L7 4018B**

PUREBRED, BULL BLACK/DOUBLE POLLED  
 3/18/2014 LSBL 4018B NPM2055658

HUNT MR JOCK 44J  
 WULFS UNLIMITED 5035U  
 WULFS REGALE 5035E  
 WULFS GUARDIAN 5074G  
 MISS L7 829U  
 MISS L7 616S

BW: 94 A	ADJ WW: 670	Adj YW: 1263									
EPDs	CED	BW	WW	YW	MA	SC	DOC	CW	REA	YG	Marb
6	2.3	78	112	26	-.2	24	39	.77	-.24	-.36	

A lengthy, heavy muscled Unlimited son going back to a popular cow family.

**Lot 22****L7 4019B**

LIM-FLEX 50%, BULL DOUBLE BLACK/SCURRED  
 4/21/2014 LSBL 4019B LFM2055655

DCC 002 OUTLOOK 472  
 DUFF STANDOUT 785  
 O C C LADY BLACKCAP 753L  
 CARROUSELS MVP  
 MISS L7 837U  
 MISS L7 422P

BW: 78 A	ADJ WW: 655	Adj YW: 1340									
EPDs	CED	BW	WW	YW	MA	SC	DOC	CW	REA	YG	Marb
10	-.5	60	85	19	N/A	N/A	19	.70	-.32	.09	

Another high performing Standout son.

**Lot 20****L7 4017B**

PUREBRED, BULL DOUBLE BLACK/HOMO POLLED (T)  
 3/14/2014 LSBL 4017B NPM2055657

WULFS WARBONNET 6254W  
 WULFS YUKON TRAIL 8084Y  
 WULFS UALANEA 8084U  
 DVFC WARDEN 233K  
 MISS L7 824U  
 MISS L7 408P

BW: 89 A	ADJ WW: 712	Adj YW: 1279									
EPDs	CED	BW	WW	YW	MA	SC	DOC	CW	REA	YG	Marb
8	1.6	64	92	25	-.4	26	26	.56	-.19	-.24	

This Yukon Trail son is about as thick made as they come. This bull is Homo Polled and has lots of grow. His maternal brother is working well for Nolz Limousin. Retaining 1/3 semen interest.



Lot 20

**Lot 23****L7 4020B**

PUREBRED, BULL      RED/SCURRED  
 3/10/2014      LSBL 4020B      NPM2055656

WULFS SIRLOIN 3172S  
 WULFS XCELLSIOR X252X  
 WULFS MISSIVE 2258M  
 CARROUSELS MVP  
 MISS L7 838U  
 MISS L7 513R

BW: 79 A	ADJ WW: 688	Adj YW: 1257										
EPDs	CED	BW	WW	YW	MA	SC	DOC	CW	REA	YG	Marb	
9	-2	70	96	23	.2	24	26	.80	-.21	.07		

838 has produced another top notch bull.



Maternal  
brother to  
Lot 23

**Lot 24****L7 4021B**

PUREBRED, BULL      RED/POLLED  
 3/12/2014      LSBL 4021B      NPM2055652

WULFS SIRLOIN 3172S  
 WULFS XCELLSIOR X252X  
 WULFS MISSIVE 2258M  
 L7 RED PEPPER 3001N  
 MISS L7 850U  
 MISS L7 418P

BW: 65 A	ADJ WW: 634	Adj YW: 1103										
EPDs	CED	BW	WW	YW	MA	SC	DOC	CW	REA	YG	Marb	
14	-3.	59	78	24	N/A	N/A	11	.80	-.33	.10		

A solid Xcellsior son going back to a good Rulon cow.

**Lot 25****L7 4022B**

LIM-FLEX 75%, BULL      DOUBLE BLACK/DOUBLE POLLED  
 4/12/2014      LSBL 4022B      LFM2055653

HC FINAL TIME 407  
 L7 XTREME 0067X  
 L7 CHILI PEPPER 080K  
 O C C LEGEND 616L  
 MISS L7 875U  
 MISS L7 159L

BW: 87 A	ADJ WW: 735	Adj YW: 1338										
EPDs	CED	BW	WW	YW	MA	SC	DOC	CW	REA	YG	Marb	
8	1.5	55	78	20	N/A	N/A	18	.75	-.27	.02		

A super moderate bull with lots of rib and thickness. Check out his performance.

**Lot 26****L7 4024B**

PUREBRED, BULL      DOUBLE BLACK/DOUBLE POLLED  
 4/3/2014      LSBL 4024B      NPM2055651

CTCA BUCKEYE BULL 8261U  
 MRL X-RATED 014X  
 MRL TASTE OF COUNTRY 790T  
 LVLS SECRET WEAPON 4408K  
 MISS L7 934W  
 MISS L7 009K

BW: 87 A	ADJ WW: 766	Adj YW: 1274										
EPDs	CED	BW	WW	YW	MA	SC	DOC	CW	REA	YG	Marb	
6	2.9	79	110	26	.4	22	38	.68	-.20	-.16		

A long sided, high performing X-Rated son.



MRL X-Rated – Sire of Lots 11 & 26

**Lot 27****L7 4025B**

LIM-FLEX 75%, BULL      BLACK/DOUBLE POLLED  
 4/21/2014      LSBL 4025B      LFM2055647

WULFS SIRLOIN 3172S  
 WULFS XCELLSIOR X252X  
 WULFS MISSIVE 2258M  
 S A F CONNECTION  
 MISS L7 948W  
 MISS L7 743T

BW: 89 A	ADJ WW: 786	Adj YW: 1449										
EPDs	CED	BW	WW	YW	MA	SC	DOC	CW	REA	YG	Marb	
11	.5	65	93	25	.1	24	25	.57	-.13	.33		

Check out the performance in this Xcellsior bull. Long patterned and heavy muscled.



Reserve Champion bull at 2015 BHSS  
 Many half brothers sell.

**Lot 28****L7 4026B**

PUREBRED, BULL      DOUBLE BLACK/DOUBLE POLLED  
 3/10/2014      LSBL 4026B      NPM2055648

WULFS WARBONNET 6254W  
 WULFS YUKON TRAIL 8084Y  
 WULFS UALANEA 8084U  
 WULFS SPACE SHIP 3223S  
 MISS L7 009X  
 L7 CHILI PEPPER 080K

BW:	86 A	ADJ WW:	659	Adj YW:	1252						
EPDs	CED	BW	WW	YW	MA	SC	DOC	CW	REA	YG	Marb
	8	2.1	59	85	30	.1	22	23	.48	-.13	-.11

A solid Yukon Trail bull going back to Chili Pepper.



**Wulfs Yukon Trail 8084Y — Sire of Lots 10, 15, 16, 20, 28, 38, 41, & 62**

**Lot 29****L7 4027B**

PUREBRED, BULL      BLACK/HOMO POLLED (T)  
 3/12/2014      LSBL 4027B      NPM2055644

WULFS SIRLOIN 3172S  
 WULFS XCELLSIOR X252X  
 WULFS MISSIVE 2258M  
 WULFS SPACE SHIP 3223S  
 MISS L7 011X  
 L7 CHILI PEPPER 080K

BW:	77 A	ADJ WW:	697	Adj YW:	1326						
EPDs	CED	BW	WW	YW	MA	SC	DOC	CW	REA	YG	Marb
	10	.3	62	87	26	.5	19	21	.69	-.24	.15

Don't miss out on this black Xcellsior bull that's also homo polled. Big topped, long sided, with tons of performance. Out of another good Chili Pepper cow. Retaining 1/3 semen interest.

**Lot 30****L7 4030B**

LIM-FLEX 63%, BULL      DOUBLE BLACK/SCURRED  
 5/1/2014      LSBL 4030B      LFM2055643

HC FINAL TIME 407  
 L7 XTREME 0067X  
 L7 CHILI PEPPER 080K  
 RITO 616 OF 4B20 6807  
 MISS L7 052X  
 MISS L7 875U

BW:	90 A	ADJ WW:	826	Adj YW:	1479						
EPDs	CED	BW	WW	YW	MA	SC	DOC	CW	REA	YG	Marb
	7	2.6	61	94	19	N/A	N/A	30	.70	-.22	.18

This Xtreme bull is simply a chunk. Excellent performance and a half brother to a popular lot last year.

**Lot 31****L7 4031B**

LIM-FLEX 75%, BULL      BLACK/DOUBLE POLLED  
 3/14/2014      LSBL 4031B      LFM2055640

WULFS SIRLOIN 3172S  
 WULFS XCELLSIOR X252X  
 WULFS MISSIVE 2258M  
 DUFF STANDOUT 785  
 MISS L7 059X  
 MISS L7 513R

BW:	88 A	ADJ WW:	736	Adj YW:	1380						
EPDs	CED	BW	WW	YW	MA	SC	DOC	CW	REA	YG	Marb
	11	.8	70	102	23	N/A	N/A	31	.92	-.25	.22

Here's a high performing, soft made black Xcellsior son. Goes back to 513 cow.

**Lot 32****L7 4032B**

LIM-FLEX 75%, BULL      BLACK/DOUBLE POLLED  
 3/12/2014      LSBL 4032B      LFM2055641

WULFS SIRLOIN 3172S  
 WULFS XCELLSIOR X252X  
 WULFS MISSIVE 2258M  
 DUFF STANDOUT 785  
 MISS L7 060X  
 MISS L7 622S

BW:	83 A	ADJ WW:	707	Adj YW:	1357						
EPDs	CED	BW	WW	YW	MA	SC	DOC	CW	REA	YG	Marb
	11	.1	66	96	25	N/A	N/A	27	1.01	-.28	.17

Another good Xcellsior bull out of a Standout cow. Should pack the pounds into his calf crop. Homo polled test pending.

Lot  
**33**

### L7 4034B

PUREBRED, BULL      DOUBLE BLACK/DOUBLE POLLED  
4/14/2014      LSBL 4034B      NPM2055639

HC FINAL TIME 407  
L7 XTREME 0067X  
L7 CHILI PEPPER 080K  
WULFS GUARDIAN 5074G  
MISS L7 102Y  
MISS L7 920W

BW:	85 A	ADJ WW:	646	Adj YW:	1230						
EPDs	CED	BW	WW	YW	MA	SC	DOC	CW	REA	YG	Marb
	5	2.3	59	85	19	N/A	N/A	24	.76	-.28	-.17

Another stout, moderate framed Xtreme son. Out of an up and coming Guardian cow.

Lot  
**34**

### L7 4035B

PERCENTAGE, BULL      RED/SCURRED  
4/1/2014      LSBL 4035B      NXM2055635

WULFS SIRLOIN 3172S  
WULFS XCELLSIOR X252X  
WULFS MISSIVE 2258M  
WULFS GUARDIAN 5074G  
MISS L7 106Y  
MISS L7 943W

BW:	82 A	ADJ WW:	779	Adj YW:	1381						
EPDs	CED	BW	WW	YW	MA	SC	DOC	CW	REA	YG	Marb
	9	.0	67	98	24	N/A	N/A	27	.86	-.23	.12

This bull is sure to impress on sale day. Tons of grow in a moderate package. Super thick, big topped and lots of rib.



Lot 34

Lot  
**35**

### L7 4036B

PUREBRED, BULL      RED/DOUBLE POLLED  
3/29/2014      LSBL 4036B      NPM2055636

WULFS SIRLOIN 3172S  
WULFS XCELLSIOR X252X  
WULFS MISSIVE 2258M  
WULFS SPACE SHIP 3223S  
MISS L7 111Y  
MISS L7 301N

BW:	73 A	ADJ WW:	641	Adj YW:	1188						
EPDs	CED	BW	WW	YW	MA	SC	DOC	CW	REA	YG	Marb
	11	-.5	59	82	32	.5	20	18	.73	-.19	.20

A smooth polled Xcellsior bull going back to 301.

Lot  
**36**

### L7 4037B

LIM-FLEX 75%, BULL DOUBLE BLACK/DOUBLE POLLED  
4/10/2014      LSBL 4037B      LFM2055632

DUFF NEW EDITION 6108  
L7 1017Y  
MISS L7 622S  
WULFS SPACE SHIP 3223S  
MISS L7 119Y  
MISS L7 807U

BW:	83 A	ADJ WW:	666	Adj YW:	1337						
EPDs	CED	BW	WW	YW	MA	SC	DOC	CW	REA	YG	Marb
	6	2.6	62	96	22	N/A	N/A	30	.56	-.12	.01

A long sided high performing 3/4 blood.

Lot  
**37**

### L7 4038B

PUREBRED, BULL      RED/POLLED  
4/1/2014      LSBL 4038B      NPM2055634

WULFS SIRLOIN 3172S  
WULFS XCELLSIOR X252X  
WULFS MISSIVE 2258M  
CJSL WINDFALL 9072W  
MISS L7 123Y  
MISS L7 806U

BW:	75 A	ADJ WW:	639	Adj YW:	1340						
EPDs	CED	BW	WW	YW	MA	SC	DOC	CW	REA	YG	Marb
	11	-.6	66	91	28	.2	29	22	.72	-.21	.12

Soft, thick made Xcellsior bull out of a super cow family.

Lot  
**38**

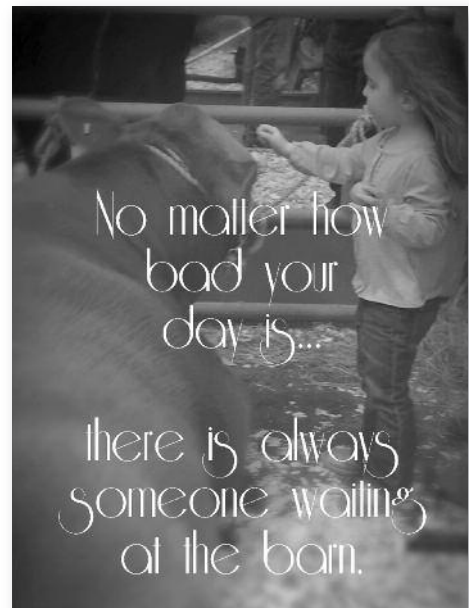
### L7 4039B

PUREBRED, BULL      RED/DOUBLE POLLED  
3/24/2014      LSBL 4039B      NPM2055630

WULFS WARBONNET 6254W  
WULFS YUKON TRAIL 8084Y  
WULFS UALANEA 8084U  
WULFS TITUS 2149T  
MISS L7 125Y  
MISS L7 344N

BW:	77 A	ADJ WW:	637	Adj YW:	1117						
EPDs	CED	BW	WW	YW	MA	SC	DOC	CW	REA	YG	Marb
	9	.7	62	85	30	-.4	26	21	.49	-.17	-.20

A solid Yukon Trail bull that's smooth polled.



**Lot 39****L7 4040B**PUREBRED, BULL      RED/HOMO POLLED (T)  
4/1/2014      LSBL 4040B      NPM2055631WULFS SIRLOIN 3172S  
WULFS XCELLSIOR X252X  
WULFS MISSIVE 2258M  
L7 RED PEPPER 3001N  
MISS L7 139Y  
MISS L7 428P

BW: 78 A	ADJ WW: 756	Adj YW: 1335									
EPDs	CED	BW	WW	YW	MA	SC	DOC	CW	REA	YG	Marb
10	.3	67	92	22	N/A	N/A	24	.84	-.27	.09	

This homo polled Xcellsior son is deep bodied and super thick. Out of real good Red Pepper cow. Check out his weights. Retaining 1/3 semen interest.

**Lot 39****Lot 42****L7 4043B**PUREBRED, BULL      BLACK/SCURRED  
4/6/2014      LSBL 4043B      NPM2055625HC FINAL TIME 407  
L7 XENON 0029X  
MISS L7 520R  
L7 RED PEPPER 3001N  
MISS L7 144Y  
MISS L7 700T

BW: 89 A	ADJ WW: 677	Adj YW: 1376									
EPDs	CED	BW	WW	YW	MA	SC	DOC	CW	REA	YG	Marb
5	3.0	63	87	20	N/A	N/A	26	.70	-.26	-.25	

Plenty of performance in this lengthy, thick made bull. Backed up by a real good Red Pepper cow.

**Half Brother to Lots 14, 42, 43, & 56****Lot 40****L7 4041B**PUREBRED, BULL      RED/SCURRED  
3/23/2014      LSBL 4041B      NPM2055628WULFS SIRLOIN 3172S  
WULFS XCELLSIOR X252X  
WULFS MISSIVE 2258M  
L7 RED PEPPER 3001N  
MISS L7 141Y  
MISS L7 531R

BW: 80 A	ADJ WW: 703	Adj YW: 1282									
EPDs	CED	BW	WW	YW	MA	SC	DOC	CW	REA	YG	Marb
8	1.1	69	98	22	N/A	N/A	29	.80	-.25	.03	

A nice muscular, long sided Xcellsior bull.

**Lot 43****L7 4044B**LIM-FLEX 75%, BULL DOUBLE BLACK/DOUBLE POLLED  
4/10/2014      LSBL 4044B      LFM2055626HC FINAL TIME 407  
L7 XENON 0029X  
MISS L7 520R  
RITO 616 OF 4B20 6807  
MISS L7 158Y  
MISS L7 619S

BW: 85 A	ADJ WW: 687	Adj YW: 1396									
EPDs	CED	BW	WW	YW	MA	SC	DOC	CW	REA	YG	Marb
8	2.5	62	91	21	N/A	N/A	27	.64	-.20	.03	

Another growthy Xenon bull. A real good sire group.

**Lot 41****Lot 41****L7 4042B**PUREBRED, BULL      BLACK/SCURRED  
3/22/2014      LSBL 4042B      NPM2055629WULFS WARBNONNET 6254W  
WULFS YUKON TRAIL 8084Y  
WULFS UALANEA 8084U  
L7 RED PEPPER 3001N  
MISS L7 143Y  
MISS L7 616S

BW: 85 A	ADJ WW: 700	Adj YW: 1235									
EPDs	CED	BW	WW	YW	MA	SC	DOC	CW	REA	YG	Marb
9	1.7	62	86	28	N/A	N/A	23	.51	-.21	-.19	

Super thick, big topped bull out of a solid cow family.

Lot  
**44**

### L7 4045B

LIM-FLEX 50%, BULL  
3/4/2014 LSBL 4045B BLACK/SCURRED  
LFM2055623

S A V BISMARCK 5682  
S A V BRILLIANCE 8077  
S A V BLACKCAP MAY 5270  
WULFS GUARDIAN 5074G  
MISS L7 202Z  
MISS L7 017X

BW: 75 A	ADJ WW: 619	Adj YW: 1249									
EPDs	CED	BW	WW	YW	MA	SC	DOC	CW	REA	YG	Marb
15	-2.4	59	89	28	.2	N/A	13	.76	-.18	.13	

A good moderate, deep sided, thick made Brilliance son.



SAV Brilliance — Sire of Lots 44, 46, 47, 48, 55, & 57

Lot  
**47**

### L7 4049B

LIM-FLEX 50%, BULL  
3/9/2014 LSBL 4049B BLACK/SCURRED  
LFM2055618

S A V BISMARCK 5682  
S A V BRILLIANCE 8077  
S A V BLACKCAP MAY 5270  
L7 RED PEPPER 3001N  
MISS L7 218Z  
MISS L7 361N

BW: 76 A	ADJ WW: 733	Adj YW: 1486									
EPDs	CED	BW	WW	YW	MA	SC	DOC	CW	REA	YG	Marb
14	-1.1	60	91	27	N/A	N/A	22	.67	-.18	.17	

You'll be hard pressed to find a 50% bull with the muscling that 4049 has. Lots of performance in this dude. His mother is a full sib to a past high seller.



Lot  
**45**

### L7 4047B

PUREBRED, BULL  
3/10/2014 LSBL 4047B DOUBLE BLACK/DOUBLE POLLED  
NPM2055620

WULFS RAMBLER 8400X  
WULFS GUARDIAN 5074G  
WULFS EXAMPLE 5074E  
WULFS WARBONNET 6254W  
MISS L7 208Z  
MISS L7 422P

BW: 82 A	ADJ WW: 719	Adj YW: 1358									
EPDs	CED	BW	WW	YW	MA	SC	DOC	CW	REA	YG	Marb
10	.3	56	79	25	-.3	N/A	17	.71	-.29	-.35	

Long and thick Guardian bull that will pack on the pounds.

Lot  
**46**

### L7 4048B

LIM-FLEX 50%, BULL  
3/13/2014 LSBL 4048B DOUBLE BLACK/DOUBLE POLLED  
LFM2055621

S A V BISMARCK 5682  
S A V BRILLIANCE 8077  
S A V BLACKCAP MAY 5270  
WULFS UNLIMITED 5035U  
MISS L7 209Z  
MISS L7 425P

BW: 76 A	ADJ WW: 654	Adj YW: 1293									
EPDs	CED	BW	WW	YW	MA	SC	DOC	CW	REA	YG	Marb
12	-.5	67	105	31	.3	13	31	.71	-.09	.14	

A deep sided, high performing Brilliance son.

Lot  
**48**

### L7 4050B

LIM-FLEX 50%, BULL  
3/1/2014 LSBL 4050B BLACK/SCURRED  
LFM2055619

S A V BISMARCK 5682  
S A V BRILLIANCE 8077  
S A V BLACKCAP MAY 5270  
L7 RED PEPPER 3001N  
MISS L7 220Z  
MISS L7 616S

BW: 85 A	ADJ WW: 706	Adj YW: 1376									
EPDs	CED	BW	WW	YW	MA	SC	DOC	CW	REA	YG	Marb
12	.3	62	93	27	N/A	N/A	25	.69	-.15	.21	

A long patterned Brilliance son with plenty of rib.

Lot  
**49**

### L7 4051B

PUREBRED, BULL  
3/11/2014 LSBL 4051B DOUBLE BLACK/DOUBLE POLLED  
NPM2055615

WULFS RAMBLER 8400X  
WULFS GUARDIAN 5074G  
WULFS EXAMPLE 5074E  
L7 RED PEPPER 3001N  
MISS L7 221Z  
MISS L7 622S

BW: 78 A	ADJ WW: 692	Adj YW: 1305									
EPDs	CED	BW	WW	YW	MA	SC	DOC	CW	REA	YG	Marb
8	.7	57	82	15	N/A	N/A	20	.83	-.34	-.37	

Another Red Pepper cow raising a high performance calf.

Lot  
**50**

### L7 4052B

PUREBRED, BULL      DOUBLE BLACK/DOUBLE POLLED  
3/6/2014                      LSBL 4052B                      NPM2055616

WULFS RAMBLER 8400X  
WULFS GUARDIAN 5074G  
WULFS EXAMPLE 5074E  
WULFS SIRLOIN 3172S  
  
MISS L7 226Z  
MISS L7 026X

BW:	76 A	ADJ WW:	652	Adj YW:	1177						
EPDs	CED	BW	WW	YW	MA	SC	DOC	CW	REA	YG	Marb
	9	-5	62	87	23	N/A	N/A	21	.85	-.28	-.20

A solid Guardian bull going back to a 301 family.

Lot  
**54**

### L7 4058B

PUREBRED, BULL      BLACK/DOUBLE POLLED  
4/19/2014                      LSBL 4058B                      UNRECORDED

HC FINAL TIME 407  
L7 XTREME 0067X  
L7 CHILIPEPPER 080K  
L7 JOHNNY BLACK 1040L  
  
MISS L7 854U  
MISS L7 361N

BW:	88 A	ADJ WW:	682	Adj YW:	1221						
EPDs	CED	BW	WW	YW	MA	SC	DOC	CW	REA	YG	Marb
	3	3.7	64	88	21	.2	N/A	27	.70	-.27	-.12

A moderate, big topped bull.

Lot  
**51**

### L7 4053B

LIM-FLEX 75%, BULL      DOUBLE BLACK/DOUBLE POLLED  
3/21/2014                      LSBL 4053B                      LFM2055613

WULFS RAMBLER 8400X  
WULFS GUARDIAN 5074G  
WULFS EXAMPLE 5074E  
DUFF STANDOUT 785  
  
MISS L7 240Z  
MISS L7 TAX DEAL 347N

BW:	74 A	ADJ WW:	643	Adj YW:	1177						
EPDs	CED	BW	WW	YW	MA	SC	DOC	CW	REA	YG	Marb
	13	-1.5	52	74	20	N/A	N/A	11	.74	-.35	-.19

A nice moderate, heavy muscled bull.

Lot  
**55**

### L7 4061B

LIM-FLEX 50%, BULL      DOUBLE BLACK/POLLED  
3/21/2014                      LSBL 4061B                      UNRECORDED

SAV BISMARCK 5682  
SAV BRILLIANCE  
SAV BLACKCAP MAY 5270  
WULFS SIRLOIN 3172S  
  
MISS L7 271Z  
MISS L7 006X

BW:	80 A	ADJ WW:	667	Adj YW:	1348						
EPDs	CED	BW	WW	YW	MA	SC	DOC	CW	REA	YG	Marb
	N/A	N/A	N/A	N/A	N/A	N/A	N/A	N/A	N/A	N/A	N/A

A long, high performing bull.

Lot  
**52**

### L7 4054B

LIM-FLEX 75%, BULL      DOUBLE BLACK/DOUBLE POLLED  
3/21/2014                      LSBL 4054B                      LFM2055614

WULFS RAMBLER 8400X  
WULFS GUARDIAN 5074G  
WULFS EXAMPLE 5074E  
DUFF BODY BUILDER 763  
  
MISS L7 249Z  
MISS L7 908W

BW:	78 A	ADJ WW:	676	Adj YW:	1171						
EPDs	CED	BW	WW	YW	MA	SC	DOC	CW	REA	YG	Marb
	12	-.7	57	85	21	-.5	23	19	.80	-.32	-.19

Thick, deep sided Guardian son.

Lot  
**56**

### L7 4062B

LIM-FLEX 75%, BULL      DOUBLE BLACK/DOUBLE POLLED  
4/21/2014                      LSBL 4062.B                      UNRECORDED

HC FINAL TIME 407  
L7 XENON 0029X  
MISS L7 520R  
OCC LEGEND  
  
MISS L7 876U  
MISS L7 176L

BW:	89 A	ADJ WW:	665	Adj YW:	1226						
EPDs	CED	BW	WW	YW	MA	SC	DOC	CW	REA	YG	Marb
	10	.6	56	79	19	.15	16	18	.61	-.20	-.22

Another solid Xenon bull.

Lot  
**53**

### L7 4055B

LIM-FLEX 75%, BULL      RED/SCURRED  
3/7/2014                      LSBL 4055B                      LFM2055610

WULFS RAMBLER 8400X  
WULFS GUARDIAN 5074G  
WULFS EXAMPLE 5074E  
LIMESTONE JUPITER U449  
  
MISS L7 251Z  
MISS L7 024X

BW:	89 A	ADJ WW:	682	Adj YW:	1251						
EPDs	CED	BW	WW	YW	MA	SC	DOC	CW	REA	YG	Marb
	7	1.1	59	86	18	N/A	N/A	23	.83	-.31	-.18

A solid Guardian bull.

Lot  
**57**

### L7 4063B

LIM-FLEX 50%, BULL      BLACK/POLLED  
3/10/2014                      LSBL 4063B                      UNRECORDED

SAV BISMARCK 5682  
SAV BRILLIANCE  
SAV BLACKCAP MAY 5270  
L7 RED PEPPER 3001N  
  
MISS L7 214Z  
MISS L7 137L

BW:	68 A	ADJ WW:	621	Adj YW:	1222						
EPDs	CED	BW	WW	YW	MA	SC	DOC	CW	REA	YG	Marb
	9	.4	49	77	25	N/A	N/A	20	.62	-.15	.05

A solid Brilliance son.



Lot  
**58**

### L7 4065B

PUREBRED, BULL  
4/18/2014 LSBL 4065B BLACK/HORNED  
UNRECORDED

HC FINAL TIME 407  
L7 XTREME 0067X  
L7 CHILIPEPPER 080K  
L7 RED PEPPER 3001N  
MISS L7 034X  
MISS L7 714T

BW:	87 A	ADJ WW:	671	Adj YW:	1260						
EPDs	CED	BW	WW	YW	MA	SC	DOC	CW	REA	YG	Marb
	5	2.4	57	82	18	N/A	N/A	21	.73	-.32	-.07

A moderate, thick made Xtreme bull. Out of a good Red Pepper cow.



Lot  
**59**

### L7 4066B

PUREBRED, BULL  
4/17/2014 LSBL 4066B DOUBLE BLACK/HORNED  
UNRECORDED

HC FINAL TIME 407  
L7 XTREME 0067X  
L7 CHILIPEPPER 080K  
WULFS GUARDIAN 5074G  
MISS L7 908W  
MISS L7 716T

BW:	87 A	ADJ WW:	657	Adj YW:	1204						
EPDs	CED	BW	WW	YW	MA	SC	DOC	CW	REA	YG	Marb
	6	2.5	60	86	19	.4	19	24	.66	-.26	-.15

A heavy muscled Xtreme son.

**This Brilliance female was quite competitive for Delaney this past summer. She ended her show career as champion 4-H limousin heifer.**



~ Open Heifers ~

These six heifers come from the heart of our replacement females.

Lot  
**60**

### MISS L7 403B

PUREBRED, COW  
4/21/2014 LSBL 403B RED/DOUBLE POLLED  
NPF2055603

WULFS SIRLOIN 3172S  
WULFS XCELLSIOR X252X  
WULFS MISSIVE 2258M  
ROMN JUSTICE  
MISS L7 700T  
MISS L7 907J

BW:	76 A	ADJ WW:	593	Adj YW:	1009						
EPDs	CED	BW	WW	YW	MA	SC	DOC	CW	REA	YG	Marb
	11	-.6	63	86	28	.1	26	19	.70	-.27	.08

A smooth made, deep sided Xcellsior, out of a good Justice cow.

Lot  
**61**

### MISS L7 412B

PUREBRED, COW  
3/22/2014 LSBL 412B RED/DOUBLE POLLED  
NPF2055590

WULFS SIRLOIN 3172S  
WULFS XCELLSIOR X252X  
WULFS MISSIVE 2258M  
L7 RED PEPPER 3001N  
MISS L7 140Y  
MISS L7 520R

BW:	78 A	ADJ WW:	575	Adj YW:	1004						
EPDs	CED	BW	WW	YW	MA	SC	DOC	CW	REA	YG	Marb
	9	1.1	68	95	23	N/A	N/A	27	.83	-.26	.04

Xcellsior has really clicked on the Red Pepper cows. This female is impressive. She is easy on the eyes with a solid set of EPD's. Don't miss out on this excellent genetic package.

**Lot  
62****MISS L7 415B**

PUREBRED, COW 3/6/2014	DOUBLE BLACK/DOUBLE POLLED LSBL 415B	NPF2055588
---------------------------	---	------------

WULFS WARBONNET 6254W  
WULFS YUKON TRAIL 8084Y  
WULFS UALANEA 8084U  
WULFS GUARDIAN 5074G  
  
MISS L7 903W  
MISS L7 701T

BW: 86 A	ADJ WW: 651	Adj YW: 1075									
EPDs	CED	BW	WW	YW	MA	SC	DOC	CW	REA	YG	Marb
8	2.3	65	95	29	-.5	31	29	.52	-.15	-.24	

A big, growthy Yukon Trail heifer.

**Lot  
64****MISS L7 432B**

LIM-FLEX 50%, COW 4/19/2014	BLACK/DOUBLE POLLED LSBL 432B	LFF2055568
--------------------------------	----------------------------------	------------

DCC 002 OUTLOOK 472  
DUFF STANDOUT 785  
O C C LADY BLACKCAP 753L  
L 7'N SEVEN  
  
MISS L7 534R  
MISS L7 908J

BW: 80 A	ADJ WW: 562	Adj YW: 952									
EPDs	CED	BW	WW	YW	MA	SC	DOC	CW	REA	YG	Marb
9	.6	59	91	20	N/A	N/A	25	.78	-.34	.08	

A smooth, deep sided, long necked Standout heifer.

**Lot  
63****MISS L7 424B**

PUREBRED, COW 3/10/2014	DOUBLE BLACK/DOUBLE POLLED LSBL 424B	NPF2055575
----------------------------	---	------------

HUNT MR JOCK 44J  
WULFS UNLIMITED 5035U  
WULFS REGALE 5035E  
L7 RED PEPPER 3001N  
  
MISS L7 026X  
MISS L7 301N

BW: 72 A	ADJ WW: 605	Adj YW: 956									
EPDs	CED	BW	WW	YW	MA	SC	DOC	CW	REA	YG	Marb
5	2.4	68	97	25	N/A	N/A	30	.68	-.21	-.25	

A smooth made, moderate Unlimited heifer going back to to 301. A real nice breeding piece.

**Lot  
65****MISS L7 435B**

LIM-FLEX 75%, COW 4/1/2014	RED/DOUBLE POLLED LSBL 435B	LFF2055567
-------------------------------	--------------------------------	------------

LVLS SECRET WEAPON 4408K  
CJSL WINDFALL 9072W  
CJ'S MS ARROWHEAD 456P  
NORTHERN IMPROVEMENT 4480  
  
MISS L7 156Y  
MISS L7 908W

BW: 66 A	ADJ WW: 568	Adj YW: 939									
EPDs	CED	BW	WW	YW	MA	SC	DOC	CW	REA	YG	Marb
11	.3	60	90	29	.0	22	24	.34	-.15	.03	

A soft made, smooth patterned Windfall heifer.

*Notes*


---

---

---

---

---

---

---

---

---

---

---

---

---

---

---

---

---

---

---

---

---

---

---

---

---

---

# • Terms and Conditions •

**Terms:** Cash - settlement immediately after the sale unless prior arrangements have been made.

**Health:** September - Cattle Master 4 (IBR-BVD-PI3-BRSV); 7 way Clostridium; Haemophilus Somnus. Heifers are all Brucellosis vaccinated. October - Three weeks later at weaning; Cattle Master 4, Haemophilus Somnus, Ivomec. April - Bulls are scrotal measured, semen tested, Brucellosis tested. Breeding age females have had Preg 9, Anthrax in spring.

(1) On all animals sold, health tests will be announced at the sale or printed in the sale catalog. It is understood that health papers reflect the condition of the animal at the time of the sale but carry no further guarantee as to the future health of the animal. (2) Buyers having special health requests or who wish to take cattle into states with specific or rigid health regulations should inquire specifically about the health tests required for entry into their state. (3) All females sold are considered to be calf-hood vaccinated for Brucellosis unless they are otherwise stated in the catalog or announced from the block. It is suggested that verification of vaccination be written on the health certificate.

**Delivery:** Free delivery on any purchase of \$20,000 or more to any point in the continental US. Free delivery to central locations in South Dakota and surrounding states.

**Guarantee:** All bulls are semen tested and are guaranteed to be breeders and settle cows. Scrotal measurements will be available sale day. All females one year of age are guaranteed breeders.

**Purchaser's Risk:** Each animal becomes the risk of the purchaser as soon as sold. It shall be the obligation of the seller to see that the animals are fed and cared for free of charge to the purchaser for at least 48 hours following the sale. It shall be the obligation of the purchaser to see that trucking of the animal and care of the animal past the first 48 hours following the sale are taken care of.

**Multiple Herd Use:** The North American Limousin Association new rules state: any bull used A.I. in more than one herd, must have the dam blood typed. If you are planning on using any bulls this way, please write on invoice sale day so we have the blood work on those cows on file. Lots 1, 2, 8, 9, and 11 are not eligible for AI use. Dams were sold before blood typed.

**Liability:** Each animal will be at the buyer's risk as soon as sold, but will be cared for by the seller for a reasonable period of time. Every precaution will be taken for the welfare of the cattle sold. The L7 Bar

Ranch will not be responsible for accidents, but every effort will be made to provide for the safety and comfort of those attending the sale.

**Identification of Animals:** (1) Each animal sold will have a readable tattoo corresponding to its registration paper. (2) Seller agrees to check all tattoos for accuracy prior to the sale. The buyer has the responsibility for rechecking the tattoos after taking possession and reporting any discrepancies to the seller immediately. (3) All animals to be sold will be identified by their official registration number, their tattoo and their registered name. If nicknames are used, they should be in addition to the other information. (4) The North American Limousin Foundation (NALF) board recommends that when any animal is sold, there is complete disclosure of any retained genetics in the form of pregnant recipients, frozen embryos or frozen semen.

**Registration Certificates:** (1) The seller of the animal will submit the original registration certificate with transfer information or an application for registration with transfer information on it so that a certificate can be produced by the Foundation and transferred to the new buyer. The seller must sign the back of the certificate on the application to authorize the transfer. (2) It is the responsibility of the seller to provide NALF with the buyer's complete name, address and membership number (if available) so that they can complete the transfer. It is important that the membership number be given if the buyer is already a member of NALF. (3) It is the seller's responsibility to provide the certificate or application, and transfer information to NALF within 60 days of sale, and pay transfer and registration fees.

**Announcements:** (1) Any change from the information that is printed in the catalog will be announced from the auction block. (2) All announcements made from the auction block take precedence over the printed catalog. (3) Catalogued lots not selling will be announced prior to the sale.

**Mail Bids:** Mailed or telephoned bids will be handled in a most confidential manner. If you are unable to be present to place your bids, please feel free to contact the Peterson's.

