

FIRST ANNUAL
B BAR *Cattle*
BULL + FEMALE SALE



6PM - TUESDAY, DECEMBER 12, 2017
SASKATOON LIVESTOCK SALES - SASKATOON, SK

Sale Contacts:

B Bar Cattle	
Eric Boon.....	306.280.8795
Delaney Boon.....	306.858.7609
Bohrson Marketing Services	
Scott Bohrson	403.370.3010
Martin Bohrson	306.220.7901
Taylor Richards	306.821.4169
Rob Voice	306.361.6775
MC Marketing Services	
Kiley McKinna	402.350.3447



Sale Staff:

Auctioneer	
Col. Ryan Dorran	403.507.6483
Ringmen	
Taylor Richards	306.821.4169
Mark Stock	306.678.4811

SLS Representatives 306.382.8088

Michael Fleury	306.222.9526
Harvey Welter	306.227.8684
Ryan Hurlburt	306.292.9812

Insurance:

Insurance will be available sale day.
Tom Agencies Ltd. 306.858.2622

They offer:

- Stockmen's Insurance
- Canadian Farm Insurance

Delivery

Free delivery to central points near your ranch in Alberta, Saskatchewan, and Manitoba.
Trucking arrangements to Eastern Canada will be co-ordinated and at cost of the buyer

U.S.A Buyers

For our USA Friends, take advantage of the weak Canadian Dollar. For example, currently a \$10,000 purchase will only cost you \$8,100 US! We will announce the official exchange rate on sale morning. We welcome our U.S. customers and will provide the necessary health and export papers. Trucking arrangements to USA will be co-ordinated. U.S. funds will be accepted at the Rate of Exchange current on sale day



Hotel Accommodations

Best Western Blairmore Hotel 306.242.2299

Videos & Pictures

Pictures were taken over the course of September
Videos will be available on our website www.bbarcattle.com a week prior to the sale

Viewing

Cattle are available for viewing available at the farm prior to December 9, 2017
Cattle will be available for viewing at SLS December 10-12, 2017

Terms and Conditions

Cattle will sell according to the Terms and Conditions of the Canadian Limousin Association

On behalf of the BMS team, we are very pleased to be working with the Boon family & the B Bar program on their first annual Bull & Female Sale.

The Bohrson and Boon families have been associated for over 40 years through contacts in sporting activities and in the beef and hog industries.

Not only does B Bar have a tremendous Limousin cattle program but both Delaney & Eric have volunteered many hours to the success of the SLA and now Eric sits on the CLA as Vice President.

The background of the B Bar program and the sale offering will be unique - a combination of the 2017 bull herdsire prospects, the "X" brood cows, the select group of outstanding bred heifers, and the "CJLA Echo" heifer. They also offer breed leading embryos, plus semen packs on the great red bull "Bubba Watson" plus the new black genetics of "LFLC Dollar Bill".

The B Bar program offers a tremendous amount of information to aid in your selection, and their customer service is second to none.

Stop by their stall at the National in Edmonton, Agribition or make the trip to the farm at Lucky Lake prior to sale day to tour the entire cow herd.

We look forward to seeing you December 12 to spend the day with Delaney & Deanna, Eric & Terra and the entire Boon family. We at Bohrson Marketing Services are very familiar with the sale lineup. We hope you can attend the sale but if you can't make it, feel free to utilize our integrity-driven order buying services.



Scott Bohrson
403-370-3010



Darryl Snider
780-385-5561



Martin Bohrson
306-220-7901



Geoff Anderson
306-731-7921



Rob Voice
306-361-6775



Taylor Richards
306-821-4169

Bohrson Marketing Services
RR 4 - Site 7 - Box 28 Olds, AB T4H 1T8
www.bohrson.com
bohrsonmarketing@gmail.com

Catalog Design:

Bohrson Marketing Services: www.bohrson.com
Printed EPDs are the current CLA EPDs at publication time.

Join us at 5:00 PM for supper!



B BAR *Cattle*



Delaney & Deanna Boon
Eric Boon & Terra Chalack
Box 352, Lucky Lake, SK S0L 1Z0
Eric 306-280-8795
Delaney 306-858-7609
bbarcattleco@gmail.com
www.bbarcattle.com

Welcome to our first annual bull and female sale. This sale has been 35 years in the making, as it was 1982 when dad became a CLA member and started to register Limousin cattle. Even though it is our first bull and female sale, we have been actively selling our genetics through various consignment sales and two co-hosted bull sales over the years. We thank everyone that has invested or shown interest in our program! We always welcome pictures showing how our genetics have positively influenced your program and we have posted pictures throughout the catalogue to show our appreciation!

We are extremely proud of this offering. They have breed character, structural integrity, genetic base, eye appeal and actual data to back them up. You will find some of the freshest, most sought after sires that are recognized and in demand globally. As you study the catalogue, you will see how important cow families are to us. We work hard to develop a herd built on cow families that are sound, functional, and efficient.

The bulls are on par with bull pens from past years and are being developed in a similar fashion. (Please read the next page on our wintering and bull development program). The open heifer is a special lot as she is the first female to carry the CJLA (Canadian Junior Limousin Association) tattoo, with all proceeds going to the CJLA. The bred females are a tremendous group with something for everyone and are bred early to exciting, recognized bulls. The proven producers are something we are very proud to offer. All our 'X' models on WHE are being offered and their production records speak volumes. The frozen genetics offer our freshest, most up-to-date breeding decisions.

We have compiled a lot of actual and projected data for you to use as tools, but we do not preach which tools to use. We have our own beliefs and use what works best for our management practices and we encourage you to do the same. Pictures, support pictures and videos of the lots are all available and help enhance the ability to pick cattle out to make your cattle buying decision easier. But nothing beats all this compared to viewing them in person and visiting with us. We know our cowherd better than anyone and we want to make sure you get the right animal for your program!

We hope to see you Tuesday, December 12 at Saskatoon Livestock Sales for our First Annual Bull & Female Sale. Whether you are in the market or not, come for supper, hospitality and to view Limousin cattle!

B BAR

Bull Wintering

- Our selection criteria and bull development will not change. We will continue to select our bull pen and develop the same as we have over the years. The only difference is you purchase your bull in December.
- Payment on bulls: ½ down sale day, remaining ½ after successful semen test.
- We insist to winter the bulls for you, the buyer, at no additional cost. This will allow us to properly develop them on a balanced ration as we prepare to semen test them and for longevity in mind to benefit you the customer.
- All bulls going back to B Bar Cattle must be insured.
- We will semen test the bulls at B Bar Cattle's cost the last week in February 2018.
- We feed a high roughage TMR ration consisting of oat silage, alfalfa/grass hay, Masterfeeds bull development pellet and right now onyx mineral for a gain of 3-3.5 lbs per day.
- B Bar Cattle reserves the right to collect semen on any bull sold through this sale. The semen collection will be at B Bar Cattle's expense and the buyer's convenience. Any semen collected will be for B Bar Cattle's in herd use only. This also applies to any partners on a bull.
- Our goal is to have you happy with a B Bar bull!

Bull Crop Year	December 1st Scrotal Average / Range	March 1st Scrotal Average / Range (Sale Scrotal)
2012	29 cm (25cm – 35cm)	32 cm :: (31.5cm – 38cm)
2013	33 cm (26cm – 37cm)	36 cm :: (33cm – 39cm)
2014	30 cm (27.5cm – 35.5cm)	35 cm :: (31cm – 38.5cm)
2015	31 cm (28cm – 36.5cm)	35 cm :: (33cm - 40cm)
2016	33 cm :: (26cm – 35cm)	36 cm :: (33.5cm - 39cm)

Table. Shows the average and range on scrotal size on sale bulls over the last 5 years at December 1st (10-11 months of age) to March 1st (13-14 months of age).

Data – (Yearling Weights/Carcass Data/Scrotal Measurements)

Bulls will have adjusted yearling weights, scrotal measurements and carcass ultrasound data collected in the first part of December. All the data will be available a day or two prior to the sale.

Bred heifer's carcass data is available on CLA website under Digital Beef. It will be available a day or two before the sale on a supplement sheet.

All lots are sire verified, with many parent verified.

2017 Fall Breed Average EPD									
CED	BW	WW	YW	MK	CEM	SC	DOC	REA	MB
5.0	2.8	62	85	27	5	0.6	18	0.52	-0.29

Printed EPD's are the current CLA EPD's at the publication time
All lots have Genomically Enhanced EPD's



Limousin Tags

*Recognition, where recognition is due
Tag your Limousin influence calves!*

ORDER TAGS TODAY
FROM THE CCIA WEBSTORE
www.canadaid.ca

B BAR Reference Sire

HUNT CREDENTIALS 37C ET

HUNT 37C / 90% / NPM2074458
Homo Pld (T) / Red / 21 Feb 2015

HUNT ROSS 42R
Sire: HUNT TESTAMENT 40T
HUNT RUTH 07R

WULFS SIGNATURE 9302S
Dam: JKTW WHISKEY RIVER 985 W
JKTW RADDISON 6602R

BW: 95 Adj. 205: 720

CED	BW	WW	YW	MK
10	0.9	79	110	32
CEM	SC	DOC	REA	MB
7	0.70	23	0.44	0.06

Canadian Semen Rights: B Bar Cattle, SK
Owned by: Wulf Cattle, MN and Hunt Limousin Ranch, NE
Australian Semen Rights: Western Gold Limousin, Pelican Rise Limousin, and Tanybryn Park Limousin



BULLS
YEARLING

HEIFERS
OPEN/BRED



1

HUNT TESTAMENT 40T
Sire: HUNT CREDENTIALS 37C ET
JKTW WHISKEY RIVER 985 W

RPY PAYNES DERBY 46Z
Dam: B BAR URBAN GIRL 2B
ANCHOR B URBAN GIRL

B BAR/MARTENS KILO 60E ET

UZX 60E / 92% / CPM4087264 / Hetro Pld / Red / 02 Feb 2017

BW: 98	Adj. 205: 861	Recip. Dam's Age: 7	Gestation: 285	CE: U					
CED	BW	WW	YW	MK	CEM	SC	DOC	REA	MB
10	0.7	79	101	35	8	0.8	16	0.49	-0.20



Dam



Maternal Brother



Full Sister

PRODUCERS
PROVEN

EMBRYOS

SEMEN

B Bar/Martens Kilo 60E ET is a bull to be desired on many levels; for his extreme docile nature, his breed character, his ease of fleshing with tremendous eye appeal. He combines all that with smooth flexible movement, strong scrotal development and massive dimension. Kilo 60E ET has herd-bull written all over him with his powerful eye appeal, numerical tabulation and exciting pedigree. His 3 year old donor dam from our potent Urban Girl cow family has just begun to write her own story. His sire, Credentials 37C, has been one of the most appreciated bulls in the breed since Hunt's displayed him at the 2016 NWSS. Maternal brother at Dean Simonson, SK.

Owned with Martens Livestock (Eric & Rebecca Martens) 306.391.9019

Recommended for Heifers.

B Bar Lima 65E offers a tremendous genetic and visual package to be a major factor of our offering. He has tremendous structural integrity, great front end, deep ribbed, square stout base and great scrotal development. Lima 65E, like all Credential calves, has an easy going personality to be around and was terrific to halter break. His truly impressive young two year old dam has done a fantastic job raising him, where Lima 65E sports a 105 weaning ratio and ranks 5/18. The power of strong cow families and full sisters can be seen in our Lot 1 & Lot 2 bulls.



Dam as a calf



B BAR LIMA 65E

UZX 65E / 92% / CPM4087234 / Homo Polled / Red / 04 Feb 2017

BW: 85	Adj. 205: 765	Dam's Age: 2	Gestation: 289	CE: U
CED 7	BW 1.9	WW 86	YW 116	MK 32
CEM 6	SC 0.80	DOC 10	REA 0.62	MB -0.12

B BAR PAPA 39E

UZX 39E / 92% / CPM4087216
Hetro Pld / Red / 25 Jan 2017

Sire: HUNT TESTAMENT 40T
HUNT CREDENTIALS 37C ET
JKTW WHISKEY RIVER 985 W

Dam: B BAR URBAN GIRL 7C
RPY PAYNES DERBY 46Z
ANCHOR B URBAN GIRL

BW: 87	Adj. 205: 794			
Dam's Age: 3	Gestation: 285	CE: U		
CED 7	BW 2.3	WW 74	YW 94	MK 31
CEM 9	SC 0.77	DOC 21	REA 0.63	MB -0.10

Recommended for Heifers. A rancher bull with stoutness, capacity, fleshing ability, and hair. B Bar Papa 39E has the ability to sire a stout set of steers or maternally driven females. His dam B Bar Foxtrot 52B is ideal in her udder structure, frame size and capacity.



Lot 3 with dam



B Bar Titanium 3Z daughter, RPY Paynes Beauty 33b. Bred by Payne Livestock, SK



B Bar Titanium 3Z daughter, Bar 3R Cotton Jenny. Bred by Bar 3R Limousin, SK



B Bar Titanium 3Z daughter, WG Montana. Bred by Western Gold Limousin, Australia

Recommended for Heifers.

B Bar November 18E is a thick, long bodied, stout made Credentials 37C son that has early maturity in a moderate package. His two year old dam is a full sister to the Semex bull, B Bar Granite 57C. November 18E has a strong pedigree, EPD tabulation, with a 80lbs birth weight and 784lbs 205 day weight to ratio 108.



Maternal Grandam of Lot 4 & 5



Full brother to dam

Sire: **HUNT CREDENTIALS 37C ET**
HUNT TESTAMENT 40T
JKTW WHISKEY RIVER 985 W

Dam: **B BAR STARBURST 6C**
B BAR TITANIUM 3Z
B BAR POLLED STARBURST



4

B BAR NOVEMBER 18E

UZX 18E / 93% / CPM4087204 / Homo Pld / Red / 15 Jan 2017

BW: 80	Adj. 205: 784	Dam's Age: 2	Gestation: 279	CE: U
CED 8	BW 0.9	WW 74	YW 95	MK 32
CEM 6	SC 0.8	DOC 23	REA 0.71	MB -0.11

B BAR HOTEL 36E

UZX 36E / 92% / CPM4087215
 Homo Polled / Black / 23 Jan 2017

Sire: **HUNT CREDENTIALS 37C ET**
HUNT TESTAMENT 40T
JKTW WHISKEY RIVER 985 W

Dam: **B BAR STARBURST 7A**
DVCL MR UNBELIEVABLE U03
B BAR POLLED STARBURST

BW: 86	Adj. 205: 762	Dam's Age: 4	Gestation: 283	CE: U
CED 8	BW 0.8	WW 70	YW 87	MK 37
CEM 9	SC 0.85	DOC 23	REA 0.58	MB -0.13

Recommended for Heifers. B Bar Hotel 36E is an eye appealing, sound structured, good footed herd sire prospect with volume and balance. His dam is moderate framed, easy fleshing, nice-uddered cow from our Starburst cow family. A maternal brother works at Flatrued's and a maternal sister is at Martens Livestock, SK.



5



Maternal brother



B Bar Titanium 3Z son, Warrawindi Red Label L40. Bred by Warrawindi Limousin, Australia



B Bar Colbalt 28Z son, Pinnacle's Boogie Nights 50B. Bred by Pinnacle View Limousin, BC



B Bar Absolut 3A son, JYF Campbell 3C. Raised by J. Yorga Farms, SK.

BULLS
YEARLING

HEIFERS
OPEN/BRED

PRODUCERS

EMBRYOS

SEMEN

Recommended for Heifers.

B Bar Delta 25E is a true herd-sire candidate with his athletic ability, length of body, good foot and great testicular development. His dark cherry red color, easy going disposition and maternal attributes only add to the package. His Wulfs Tibon dam, is a maternal sister to the \$30,000 B Bar Slate 17C and \$32,000 B Bar Bentley 8D, as well as a maternal sister to the dam of Lot 7. A maternal sister to Delta 25E is the dam of Lot 11 and another sister is at Hawkeye Land & Cattle, ON.



Dam



Maternal Grandam of Lot 6 & 7

6

B BAR DELTA 25E

UZX 25E / 92% / CPM4087208 / Hetro Pld / Red / 18 Jan 2017

BW: 83	Adj. 205: 738	Dam's Age: 5	Gestation: 275	CE: U
CED 8	BW 0.7	WW 75	YW 102	MK 29
			CEM 5	SC 0.77
			DOC 26	REA 0.62
				MB -0.23

Sire: HUNT TESTAMENT 40T
HUNT CREDENTIALS 37C ET
 JKTW WHISKEY RIVER 985 W

Dam: WULFS TIBON T750T
B BAR NICOLE 27Z
 B BAR WHISKEY GIRL

Recommended for Heifers.

B Bar Mike 30E excels at the fundamentals that make great cattle – ease of calving, performance, maternal value, fleshing-ability, soundness and disposition. Mike 30E deserves some serious breeder attention as a heifer bull with his fresh pedigree, 84lbs birth weight, weaning weight ratio of 106, numerical tabulation and cow family. His dam is moderate, long bodied with a beautiful udder. She is a full sister to the \$30,000 B Bar Slate 17C and maternal sister to \$32,000 B Bar Bentley 8D and the dam of Lot 6.



Dam



B Bar Slate 17C full brother to dam of Lot 7

7

B BAR MIKE 30E

UZX 30E / 92% / CPM4087211 / Homo Pld / Red / 21 Jan 2017

BW: 84	Adj. 205: 773	Dam's Age: 3	Gestation: 284	CE: U
CED 7	BW 1.4	WW 79	YW 100	MK 31
			CEM 9	SC 0.80
			DOC 27	REA 0.53
				MB -0.12

Sire: HUNT TESTAMENT 40T
HUNT CREDENTIALS 37C ET
 JKTW WHISKEY RIVER 985 W

Dam: DVCL MR UNBELIEVABLE U03
B BAR NICOLE 6B
 B BAR WHISKEY GIRL

B Bar Alfa 8E ET is a great herd-sire prospect that has hair, style, length of body, thick top, loaded with muscle, extra shape and dimension. He is great to be around and halter broke with ease. He is sired by our \$25,500 past high seller, FarmFair Champion Bull and CWA Reserve Champion Bull, B Bar Cognac 1B. His dam, from our prominent Nicole cow family, has been one of dad's favourite cows over the years. Maternal Brothers have sold to After Hours Limousin, ON, Eden Meadows Farm, SK and a maternal sister to Triple R Limousin, MB.

Dam sells as lot 25



Dam

RPY PAYNES DERBY 46Z
Sire: **B BAR COGNAC 1B**
ANCHOR B URBAN GIRL

WULFS TIBON T750T
Dam: **B BAR ULTIMATE 201X**
B BAR POLLED ULTIMATE

B Bar India 27E has extra size, fleshing ability, muscle, volume and pounds. He will sire feeder cattle that will grow, gain and weigh heavy. He is sired by our Australian import sire, Birubi Jupita J15, and India 27E will be the first son to sell in North America. His dam is stunning to view in the flesh; long bodied, extra volume and capacity, with sound udder and movement. Maternal siblings are at Dean Simonson, SK; Revolution Cattle Co., ON and South Fork Ranch, SD.

Dam sells as lot 28



Dam

DONNA VALLEY POLL DICTATOR
Sire: **BIRUBI JUPITA J15**
LLOYD'S BLACK POLLED WUNDA

ROMN MADE TO ORDER
Dam: **ANCHOR B POLLED JEOPARDY 206X**
B BAR POLLED JEOPARDY



8



Sire

B BAR ALFA 8E ET

UZX 8E / 94% / CPM4087260 / Homo Polled / Red / 10 Jan 2017

BW: 95	Adj. 205: 718	Dam's Age: 10	Gestation: 291	CE: U					
CED 6	BW 1.2	WW 66	YW 88	MK 31	CEM 7	SC 0.8	DOC 14	REA 0.61	MB -0.4



9



Sire

B BAR INDIA 27E

UZX 27E / 93% / CPM4087262 / Scurred / Red / 19 Jan 2017

BW: 98	Adj. 205: 802	Dam's Age: 7	Gestation: 279	CE: U					
CED 2	BW 4.2	WW 72	YW 93	MK 25	CEM 7	SC n/a	DOC n/a	REA 0.72	MB -0.39

BULLS
YEARLING

HEIFERS
OPEN/BRED

PRODUCERS

EMBRYOS

SEMEN

Reference Sire

IVY'S BUBBA WATSON HTZ24B

HTZ 24B / 92% / CPM0219201
Homo Pld (T) / Red / 15 Jan 2014

ROMN TUFF ENUFF 103T
Sire: **MY'S MARKSMAN HTZ 10Z**
IVY'S XPECT THE BEST 47X

AUTO DOLLAR GENERAL 122R
Dam: **MY'S UNIQUE PERFECTION 3U**
IVY POLLED NEAR PERFECT4N

BW: 86 Adj. 205: 752 Adj 365 1288

CED	BW	WW	YW	MK
12	-0.1	72	102	38
CEM	SC	DOC	REA	MB
9	0.70	32	0.46	-0.18

Owned by: B Bar Cattle, SK and Ivy Livestock, AB
Australian Semen Rights: Maryvale Limousin



B Bar Yankee 5E has been a standout since birth; he has been appraised and admired by all visitors. Yankee 5E started off at a modest 82lbs and has exploded into a massive beef machine. An abundance of thickness, muscle, volume and pounds he will sire a group of calves to be desired. His dam B Bar Polled Reese has been a consistent, efficient producer putting progeny at Flatrued, SK; Richard McQueen, SK; Michael Johnson, SK; Payne Livestock, SK; Darling Farms, ON; Anchor B Limousin, SK; and J. Yorga Farms, SK.



Dam

10



B BAR YANKEE 5E

IVY'S MARKSMAN HTZ 10Z
Sire: **MY'S BUBBA WATSON HTZ24B**
IVY'S UNIQUE PERFECTION 3U

TMF LANDMARK 601L
Dam: **B BAR POLLED REESE**
L&S JASMINE LDS 11J

UZX 5E / 94% / CPM4087196 / Hetro Pld / Red / 03 Jan 2017

BW: 82	Adj. 205: 752	Dam's Age: 12	Gestation: 280	CE: U					
CED	BW	WW	YW	MK	CEM	SC	DOC	REA	MB
8	0.8	69	91	37	6	0.4	13	0.38	-0.31



B Bar Sugar Sugar 31Z daughter, Darling's Brown Sugar. Bred by Darling Farms, ON



B Bar Urban Girl 2A Daughter, Miss Wasy Deported 638D. Bred by Symens Bros. Limousin, SD



B Bar Cognac 1B daughter, Greenwood Miss PYN 25D. Bred by Greenwood Limousin, SK

B Bar/Hawkeye Romeo 3E is a true beef bull with stoutness, length of body, width and muscling. He completes it all with tremendous depth of body, sound movement and great docility. His donor dam is powerful in her design, sound structured and a show quality udder. This genetic package is awfully exciting when you combine his numbers and look together. A maternal brother sold to Triple D Enterprises, ON. Another maternal brother sells as Lot 13.

Owned with Hawkeye Land & Cattle (Matthew Heleniak)
519-537.1451



Dam



11



Maternal Brother

B BAR / HAWKEYE ROMEO 3E

HWK 3E / 93% / CPM4087244 / Het Pld / Red / 28 Jan 2017

Sire: *IVY'S MARKSMAN HTZ 10Z*
IVY'S BUBBA WATSON HTZ24B
IVY'S UNIQUE PERFECTION 3U

Dam: *RPY PAYNES DERBY 46Z*
B BAR FOXTROT 21B
ANCHOR B UNIQUE GAL

BW: 93	Adj. 205: 805	Dam's Age: 3	Gestation: 287	CE: U
CED 8	BW 1.8	WW 78	YW 101	MK 34
CEM 8	SC 0.76	DOC 18	REA 0.30	MB -0.22

B BAR SIERRA 49E

UZX 49E / 93% / CPM4087221
Homo Pld / Red / 27 Jan 2017

Sire: *IVY'S MARKSMAN HTZ 10Z*
IVY'S BUBBA WATSON HTZ24B
IVY'S UNIQUE PERFECTION 3U

Dam: *CAM POLL YESMAN*
B BAR NICOLE 30B
B BAR NICOLE 27Z

BW: 65	Adj. 205: 690			
Dam's Age: 3	Gestation: 274	CE: U		
CED 12	BW -0.7	WW 73	YW 101	MK 30
CEM 10	SC .58	DOC 30	REA .38	MB -0.27

Recommended for Heifers. B Bar Sierra 49E should be a calving ease deluxe with an actual birthweight of 65lbs, top 1% for CED and CEM, and top 3% for BW. He combines that with a strong 205 day weight of 690. Sierra 49E is moderate, has piles of shape, loads of muscle with a strong level top.



12



Maternal Grandam



B Bar Staburst 18A daughter, Red Maple Dirty Secret 6D. Bred by Red Maple Farms, ON



B Bar Brick 5 B daughter, Birubi Mazurka M116. Bred by Birubi Limousin Stud, Australia



B Bar Soot 25B daughter, HLC Denver 18D. Bred by Hewson Land & Cattle Co., SK

BULLS

HEIFERS
&
OPEN/BRED

PRODUCERS

EMBRYOS

SEMEN

Reference Sire

RICHMOND ZODIAC SRD 29Z

SRD 29Z / 94% / LIMCANM0000P0210496

Homo Pld (T) / Red / 30 Jan 2012

RICHMOND SIR J.R. SRD 128S
Sire: RICHMOND WYATT SRD 48W
TOP MEADOW 303N

RPY PAYNES MARATHON 47U
Dam: RICHMOND XOTIC SRD 6X
RPY PERFECT STORM 10R

BW: 75 Adj. 205: 715

CED	BW	WW	YW	MK
7	0.8	65	91	31
CEM	SC	DOC	REA	MB
5	0.7	24	0.57	-0.38

Owned by: Richmond Ranch, AB



Lot 13 at 3 months



Lot 13 at 5 months

B BAR / HAWKEYE OSCAR 1E ET

HWK 1E / 94% / CPM4087242 / Scurred / Red / 04 Jan 2017

BW: 91	Adj. 205: 706	Dam's Age: 10	Gestation: 286	CE: U					
CED	BW	WW	YW	MK	CEM	SC	DOC	REA	MB
6	1.6	71	87	33	6	0.76	14	0.31	-0.34

RICHMOND WYATT SRD 48W
Sire: RICHMOND ZODIAC SRD 29Z
RICHMOND XOTIC SRD 6X

RPY PAYNES DERBY 46Z
Dam: B BAR FOXTROT 21B
ANCHOR B UNIQUE GAL

B Bar/Hawkeye Oscar 1E ET is a thick, easy fleshing Zodiac 29Z son with capacity, length of body and muscle. His donor dam is respected by some of the most highly regarded cattlemen. She is massive ribbed, powerful in her design, sound structured with a great udder. The cross with Richmond Zodiac 29Z to infuse the potent RPY Perfect Storm 10R cow has combined with our maternal Foxtrot lineage in a very impressive cross. Oscar 1E ET has been a standout from the beginning; which is evident by his support pictures! Maternal brother sells as Lot 11 and another one is at Triple D Enterprises, ON.

Owned with Hawkeye Land & Cattle (Matthew Heleniak) 519.537.1451



Dam

B BAR X-RAY 62E ET

UZX 62E / 94% / CPM4087266
Homo Polled / Red / 02 Feb 2017

RICHMOND WYATT SRD 48W
Sire: **RICHMOND ZODIAC SRD 29Z**
RICHMOND XOTIC SRD 6X

DVCL MR UNBELIEVABLE U03
Dam: **B BAR URBAN GIRL 71Z**
ANCHOR B URBAN GIRL

BW: 95 Adj. 205: 761
Dam's Age: 11 Gestation: 285 CE: U

CED	BW	WW	YW	MK
6	1.7	68	78	36
CEM	SC	DOC	REA	MB
7	0.77	25	0.53	-0.32

B Bar X-Ray 62E ET is a cowman's kind of bull with length, volume, soundness, hair and docility. His donor dam has quickly proven herself within her first 3 years of production; she is bold ribbed, stout, long bodied with a sound well attached udder. X-Ray 62E ET has 3 flushmate sisters that stack right at the top of the replacement heifer pen. A maternal sister sells as a feature bred as Lot 22. A maternal sister was the high selling female in the 2016 ABC Sale to RCN Livestock, SK.



14

Dam

B BAR TANGO 47E

UZX 47E / 94% / CPM4087248
Homo Pld / Red / 27 Jan 2017

RICHMOND WYATT SRD 48W
Sire: **RICHMOND ZODIAC SRD 29Z**
RICHMOND XOTIC SRD 6X

WULFS TIBON T750T
Dam: **B BAR SHANIA 234X**
B BAR POLLED SHANIA

BW: 80 Adj. 205: 691
Dam's Age: 7 Gestation: 285 CE: U

CED	BW	WW	YW	MK
8	0.2	62	78	33
CEM	SC	DOC	REA	MB
6	0.4	22	0.42	-0.33

Recommended for Heifers. A great heifer bull option with just an 80lbs birth weight, B Bar Tango 47E is moderate, sound in his structure, smooth made with a great front end and clean jointed; yet carries enough rib, capacity and volume. His dam, B Bar Shania 234X has been a tremendous producer for us with sound udder attachment. Maternal Brothers are at Delbert Warren, SK and Leon Vogel, NE. A maternal sister is retained in herd while two others are at Four Mac Farms, ON and Lingley Limousin, AB. **Dam sells as lot 26**



15

Dam

B BAR VICTOR 33E

UZX 33E / 94% / CPM4087246
Scurred / Red / 22 Jan 2017

RICHMOND WYATT SRD 48W
Sire: **RICHMOND ZODIAC SRD 29Z**
RICHMOND XOTIC SRD 6X

ROMN MADE TO ORDER
Dam: **B BAR WHISKEY GIRL**
B BAR POLLED NICOLE

BW: 94 Adj. 205: 676
Dam's Age: 8 Gestation: 281 CE: U

CED	BW	WW	YW	MK
6	1.5	71	91	30
CEM	SC	DOC	REA	MB
6	0.8	30	0.65	-0.42

B Bar Victor 33E has always been one on our radar with the impressive B Bar Whiskey Girl 118W as his dam. He has developed into a long sided, strong topped bull with a good foot and hair coat. Maternal brothers are at Reg Griffen, SK; Dennis Meaden, SK; Pinnacle View Limousin, BC and 2 sons at Andrew Ranches, AB. Sisters have been retained in-herd and are the dams of **Lot 6** and **Lot 7**.



16

Dam

YEARS
BULLS
BEARLING

HEIFERS
OPEN/
BREED

PRODUCERS
PROVEN

EMBRYOS

SEMEN



17

HUNT TESTAMENT 40T
 Sire: HUNT CREDENTIALS 37C ET
 JKTW WHISKEY RIVER 985 W
 WULFS WAHPETON 6284W
 Dam: LIMOLYN COLETTE
 LIMOLYN REBECCA

CJLA ECHO 1E

Dam

CJLA 1E / 92% / CPF4088943 / Homo Pld / Red / 25 Jan 2017

BW: 70	Adj. 205: 640	Dam's Age: 2	Gestation: 280	CE: U
CED 10	BW 0	WW 72	YW 98	MK 35
			CEM 7	SC 0.53
			DOC 19	REA 0.55
				MB -0.05

All proceeds go to the Canadian Junior Limousin Association

In 2015 Lynn & Tyra Combest dispersed. They were generous to donate a heifer to the CJLA. 16 operations (list below) bought the heifer for \$8,000. We at B Bar Cattle have managed her since that point. All proceeds from the cow are put towards the CJLA to help them present scholarships and trips, to help provide funds for meetings and the CJLA Conference. This is a completely new and exciting idea that has gained attention from cattlemen and cattlemen in other breeds as a unique idea to help our Junior Association.

We are proud to present to you the very first CJLA tattooed animal, CJLA Echo 1E! She is extremely stylish in her design, moderate framed and sound in skeletal structure with a square hip and lots of rib. Her dam is an ideal cow in many ways, moderate, feminine, sound udder and teat attachment, with lots of capacity. We are excited to see what she produces for the CJLA in years to come.

CJLA 1E is guaranteed and backed by CJLA just like any other open heifers that sells within our breed, so bid with confidence!

The group that bought Limolyn Colette:

B Bar Cattle, Anchor B Limousin, Carpenter Cattle Co., Eden Meadows Farm, Richmond Ranch, Venture Livestock, Payne Livestock, Greenwood Limousin, J. Yorga Farms, Jones Cattle Company, Bee Zee Acres, Pinnacle View Limousin, Hollee Limousin, Hillview Farms, Jaymarandy Livestock, Andrew Ranches!



B Bar Slate 17C son, Slate WR Yur So Complete 727. Bred by Andrew Ranches, AB



B Bar Cognac 1B son, RPY Paynes Dynamilite 46D. Bred by Payne Livestock, SK



B Bar Cognac 1B son, JFAF 104D. Bred by Franseen Limousin, WI



B Bar Shania 20B son, Lingley's Django 9D. Bred by Lingley Limousin, AB



B Bar Soot 25B son, DBCC Dr. Feelgood 2B. Bred by Double B Cattle Co. SK



B Bar Rust 31B son EMF Darian 31D. Bred by Eden Meadows Farm, SK

B BAR BRIDGETT 25D

UZX 25D / 93% / CPF4080804
Hetro Pld / Red / 18 Jan 2016

Sire: *WULFS YANKEE K689Y*
WULFS APOSTLE T343A
WULFS ULTRA DIAMOND 8571U

Dam: *ANCHOR B "THE BOSS"*
ANCHOR B BRIGITT 23B
HIGHLAND PIXIE DUST

BW:	87	Adj. 205:	636	Adj. 365:	1066
Dam's Age:	2	Gestation:	281	CE:	U
CED	BW	WW	YW	MK	
4	1.8	71	95	34	
CEM	SC	DOC	REA	MB	
8	1.05	22	0.64	-0.13	

Bridgett 25D is a picturesque heifer with length, thickness, balance and eye appeal. She offers a tremendous EPD profile and is the kind cattlemen want to own. We selected her dam Brigitt 23B from the Anchor B program as one of the highlight heifers and our pick in the 2015 Western Select Sale. She extends back to one of Jay and Bev's most prominent, highly productive cow families, the Pixie Dusts! The mating to the \$32,000 B Bar Bentley 8D only enhances the offering and promises to be profitable for the new owner!

AI Bred to B Bar Bentley 8D :: Due January 9, 2018 (Safe) Exposed to B Bar Slate 17C from April 21 - May 17

18



Service Sire to Lots 18, 19, 20

B BAR FOXTROT 7D

UZX 7D / 94% / CPF4080723
Hetero Polled / Red / 07 Jan 2016

Sire: *RPY PAYNES DERBY 46Z*
B BAR BRICK 5B
ANCHOR B URBAN GIRL

Dam: *JYF PALADIN*
ANCHOR B WISHFUL
B BAR POLLED SUGARLAND

BW:	86	Adj. 205:	625	Adj. 365:	1048
Dam's Age:	7	Gestation:	282	CE:	U
CED	BW	WW	YW	MK	
4	2.8	68	92	35	
CEM	SC	DOC	REA	MB	
7	0.85	9	0.89	-0.39	

A stout, high growth, brood cow in the making from the Foxtrot cow family. Foxtrot 7D is massive in her overall volume and capacity, yet carries it all in a sound broody package. Her dam Anchor B Wishful 131W is a full sister to our donor cow Anchor B Unique Gal 115U. So, the same genetics run deep in Lot 19, 20, 23 and 24. Wishful 131W has put progeny at Adele & Shaun Walsh, AB; Dean Simonson, SK and Reg Griffin, SK; while we have retained 2 daughters. The mating to the \$32,000 B Bar Bentley 8D should provide the new owner a quick ROI.

AI Bred to B Bar Bentley 8D :: Due January 21, 2018 (Safe) Exposed to B Bar Slate 17C from April 21 - May 17

19



Sire

B BAR FOXTROT 21D

UZX 21D / 93% / CPF4080729
Homo Pld / Red / 17 Jan 2016

Sire: *RPY PAYNES DERBY 46Z*
B BAR COGNAC 1B
ANCHOR B URBAN GIRL

Dam: *WULFS TITUS 2149T*
B BAR FOXTROT 4A
ANCHOR B UNIQUE GAL

BW:	93	Adj. 205:	653	Adj. 365:	1007
Dam's Age:	3	Gestation:	282	CE:	U
CED	BW	WW	YW	MK	
4	3.9	77	101	28	
CEM	SC	DOC	REA	MB	
6	0.72	16	0.49	-0.27	

A magnificent Foxtrot female with a sterling pedigree. She is feminine, angular fronted, and balanced in type, with plenty of power and base to be a herd-bull producer. From the first calf crop of Cognac, we can not wait to see the maternal ability of these females. Foxtrot 21D's dam is a maternal sister to our Lot 23 and 24 females, the family lineage is strong in this female. The service to B Bar Bentley 8D who topped the 2017 ABC sale at \$32,000 should cross well and provide the new owner with opportunities!

AI Bred to B Bar Bentley 8D :: Due January 21, 2018 (Safe) Exposed to B Bar Slate 17C from April 21 - May 17

20



Sire

YE
AR
LI
NG

HE
IF
ER
S
O
P
EN
/
B
R
E
D

P
R
O
D
U
C
E
R
S

E
M
B
R
Y
O
S

S
E
M
E
N

B Bar Urban Girl 105C is extremely powerful in her design, fluid in her movement, with a stout hip, sweeping bold rib shape and all the right angles. She is a true breeding piece bringing together some of the most sought after Limousin donors; Anchor B Urban Girl 118U, Ivy's Polled Princess 1P and Ivy's Near Perfect 4N into a powerful maternal package. She is a maternal and $\frac{3}{4}$ sister to some of our most noted bulls over the years, the \$20,000 'The Boss', \$24,000 Titanium, \$25,500 Cognac, \$24,000 Brick, \$32,000 Bentley, \$15,000 Austin Healy and \$10,000 Duesenberg. Maternal sisters have topped sales and been some of the most exciting females to sell in recent years. You will note as you flip through the catalog that maternal sisters have just begun writing their own stories for us, such as lot 1, 2, 14 and 20. The mating to the \$30,000 B Bar Slate 17C only enhances this female as you add in the B Bar Nicole 4N cow family that has generated as much excitement and \$ at B Bar Cattle as any cow family. B Bar Urban Girl 105C is being shared strictly as an attraction to this sale! **Selling $\frac{1}{2}$ interest with no possession. Buyer will receive $\frac{1}{2}$ of all embryo and natural production. Buyer will be responsible for $\frac{1}{2}$ of all embryo expenses. Please contact Eric for more details. AI Bred to B Bar Slate 17C :: Due January 19, 2018 (Safe) Exposed to B Bar Slate 17C from April 21 - May 17**

21



Maternal Sister



Service Sire

B BAR URBAN GIRL 105C ET

UZX 105C / 93% / CPF4080715 / Hetro Pld / Red / 28 Dec 2015

BW: 81	Adj. 205: 624	Adj. 365: 1047	Dam's Age: 6	Gestation: 277	CE: U
CED 11	BW 0.3	WW 74	YW 96	MK 42	CEM 11
					SC 0.75
					DOC 28
					REA 0.53
					MB -0.24

Sire: **IVY'S BUBBA WATSON HTZ24B**
 IVY'S UNIQUE PERFECTION 3U
 ROMN MADE TO ORDER
 Dam: **ANCHOR B URBAN GIRL**
 B BAR RED PEPPER

A sale feature from the heart and soul of the B Bar replacement pen. One of the top EPD spread heifers to sell. She indexes 106 for weaning, 106 for yearling and 107 for ribeye. She is super broody and balanced to work in any breeding pasture. Her young 4 year old dam has already entered the donor pen. A maternal brother sells as lot 14. A maternal sister sold for \$8,000 in the 2016 ABC Sale to RCN Livestock. The service to the impressive \$32,000 B Bar Bentley 8D should result in an exciting calf.

AI Bred to B Bar Bentley 8D :: Due January 14, 2018 (Safe)
Exposed April 21 - May 17, 2017 to DBCC Dr. Feelgood



Dam of Lot 22;
 Maternal sister to Lot 21

MRL X-RATED Q14X
 Sire: **COLE ARCHITECT 08A**
 COLE MISS LODESTAR 826U
 DVCL MR UNBELIEVABLE U03
 Dam: **B BAR URBAN GIRL 71Z**
 ANCHOR B URBAN GIRL

22



Service Sire

B BAR URBAN GIRL 14D

UZX 14D / 92% / CPF4080726 / Homo Polled / Black / 10 Jan 2016

BW: 90	Adj. 205: 676	Adj. 365: 1075	Dam's Age: 3	Gestation: 278	CE: U
CED 4	BW 2.6	WW 100	YW 121	MK 28	CEM 8
					SC 1.38
					DOC 22
					REA 0.74
					MB -0.28

A personal favourite and sale feature! This deep, stout, voluminous Ivy's Bubba Watson 24B will be the centerpiece of a cowherd. She is naturally thick, stout based with that sweeping rib shape. Her maternal sisters are always popular amongst visitors and sales consultants. Her most notable sister is the \$9,500 B Bar Foxtrot 21B that Hawkeye Land & Cattle purchased in 2014. With an early service to the dark cherry red, homozygous polled Hunt Credentials 37C ET, 55D could be carrying a good pay check

AI Bred to Hunt Credentials 37C ET :: Due January 11, 2018 (Safe)
Exposed to B Bar Slate 17C from April 21 - May 17



Maternal sister to Lot 23 and Lot 24



23



Service Sire

Sire: *IVY'S MARKSMAN HTZ 10Z*
IVY'S BUBBA WATSON HTZ24B
IVY'S UNIQUE PERFECTION 3U

Dam: *JYF PALADIN*
ANCHOR B UNIQUE GAL
B BAR POLLED SUGARLAND

B BAR FOXTROT 55D

UZX 55D / 93% / CPF4080743 / Hetro Pld / Red / 15 Feb 2016

BW: 97	Adj. 205: 619	Adj. 365: 997	Dam's Age: 8	Gestation: 282	CE: U
CED 9	BW 1.9	WW 68	YW 84	MK 35	CEM 9
					SC 0.68
					DOC 25
					REA 0.39
					MB -0.3

A lead-off heifer of this event no doubt! A maternal stunner that is moderate, capacious and easy fleshing from the Foxtrot cow family with all the right pieces to make a glorious brood cow. Her sire Cole Architect o8A made a big impact on the Limousin breed last year with progeny that were massive, powerful, and fertile with tremendous dispositions. She represents the first COLE Architect o8A calf crop in Canada to the fullest extent and the only reason she is being offered up for sale is because we have 2 full sisters we will be retaining. The service to the \$32,000 B Bar Bentley 8D will add tremendous value for a quick ROI!

AI Bred to B Bar Bentley 8D :: Due January 19, 2018 (Safe)
Exposed to B Bar Slate 17C from April 21 - May 17



24



Dam of Lot 23 & 24
 Grandam of Lot 20



Service Sire

Sire: *MFL X-RATED 014X*
COLE ARCHITECT 08A
COLE MISS LODESTAR 826U

Dam: *JYF PALADIN*
ANCHOR B UNIQUE GAL
B BAR POLLED SUGARLAND

B BAR FOXTROT 33D ET

UZX 33D / 92% / CPF4080734 / Hetro Pld / Hetro Blk / 27 Jan 2016

BW: 77	Adj. 205: 640	Adj. 365: 991	Dam's Age: 7	Gestation: 282	CE: U
CED 5	BW 2.6	WW 93	YW 113	MK 31	CEM 8
					SC 1.27
					DOC 18
					REA 0.59
					MB -0.29

YE
AR
LI
NG

HE
IF
ER
S

PR
OD
UC
ER
S

EM
BR
YO
S

SE
ME
N



25

Sire: *WULFS RANSOM 3059R*
WULFS TIBON T750T
WULFS NORRYNE 3212N

Dam: *ROMIN MADE TO ORDER*
B BAR POLLED ULTIMATE
B BAR POLLED NICOLE

B BAR ULTIMATE 201X

MBH 201X / 93% / CPF0207552 / Homo Pld / Red / 06 Jan 2010

BW: 63	Adj. 205: n/a	Adj. 365: 854							
CEM	SC	DOC	REA	MB					
9	-1.6	50	71	30	6	0.8	21	0.76	-0.42

B Bar Ultimate 201X is a true sale feature, with her look, functionality and production record. Her moderate frame, fleshing ability, massive volume and tremendous dimension make her a favourite of visitors. To see this one go will upset dad a bit as she was favourite of his. I've learnt over the years to listen when dad has a favourite, plain and simple they work! Her production record shows her ability; her most noteworthy progeny are the competitive Brass 50Z and the \$21,500 Rust 31B. A female that still has years left in her; take her and breed or flush her as you wish, because it will work! The mating to Ivy's Bubba Watson 24B should give you a predictable ROI!

Observed Bred to Ivy's Bubba Watson 24B :: Due January 22, 2018 (Safe)
Exposed to Ivy's Bubba Watson 24B from April 8 – May 17

Production Record:

- Z – B Bar Brass 50Z sold to After Hours Limousin, ON.
 Reserve Junior Bull Calf Champion at both National Show and CWA.
- A – B Bar Nicole 35A sold to Triple R Limousin, MB
- B – B Bar Rust 31B sold to Eden Meadows Farm, SK
- C – B Bar Nicole 31C retained in herd
- D – UZX 12D and UZX 16D - culled
- E – B Bar Alfa 8E ET sells as lot 8
 - B Bar Echo 1E injured.



Daughter B Bar Nicole 31C



Daughter B Bar Nicole 35A



Service Sire



Son B Bar Brass 50Z



Son B Bar Rust 31B



Son selling as Lot 8



26

B BAR SHANIA 234X

Sire: *WULFS RANSOM 3059R*
WULFS TIBON T760T
WULFS NORRYNE 3212N
TMF LANDMARK 601L
Dam: **B BAR POLLED SHANIA**
KEN-DOC HOLLY

MBH 234X / 93% / CPF0207562 / Hetero Polled / Red / 20 Feb 2010

BW: 70	Adj. 205: 558	Adj. 365: 831	Dam's Age:	Gestation:	CE:
CED 10	BW -2.4	WW 42	YW 51	MK 31	CEM 7
			SC 0.1	DOC 18	REA 0.5
					MB -0.32

B Bar Shania 234X has become a no miss female; she simply thrives, functions and works! Elegant in her design, long bodied, stout ribbed with a sound udder. The granddam, Ken-Doc Holly 25H, is responsible for both our Shania and Molly cow families which when combined is one of our four major cow families. Shania 234X progeny are docile, eye appealing, structurally sound with substance and volume. Her production record speaks volumes of her ability to produce. When we went to AI her in the evening we did her to Austin Healy 4D ET. The next morning we AI'd her again, but in the commotion of a few cows to AI she got done to Chunk 35C. Either mating will work and will be awfully exciting.

AI bred to B Bar Austin Healy 4D ET and JYF Chunk 35C :: Due January 23, 2018 (Safe)
Exposed to Ivy's Bubba Watson 24B from April 21 - May 17
(We will pay for the sire verification of the calf)

Production Record

- Z - B Bar Shania 17Z sold to Four Mac Farms, ON.
Reserve Senior Heifer Calf Champion at both National Show and CWA.
- A - B Bar Baja Tango 12A sold to Delbert Warren, SK
- B - B Bar Shania 20B sold to Lingley Limousin, AB
- C - B Bar Onyx 4C sold to Leon Vogel, NE
- D - B Bar Shania 32D retained in herd
- E - B Bar Tango 47E sells as lot 15



Daughter B Bar Shania 17Z



Daughter B Bar Shania 20B



Son selling as Lot 15



Son B Bar Onyx 4C



Son B Bar Baja Tango 12A



Daughter B Bar Shania 35D



27

ANCHOR B BRIGHT LIGHT 203X

Sire: *ROMN JUSTICE*
RPY PAYNES SIGNAL 6S
GREENWOODPOLLEDHIPPIYHOP

MBH 203X / 93% / CPF0207557 / Hetero Pld / Red / 08 Jan 2010

Dam: *HC POLLED GUNRUNNER*
B BAR POLLED BRIGHT LIGHT
B BAR POLLED DELIGHT

BW: 92	Adj. 205: n/a	Adj. 365: 1010								
CEB	BW	WW	YW	MK	CEM	SC	DOC	REA	MB	
4	3.9	62	78	25	5	0.4	21	0.45	-0.23	

Anchor B Bright Light 203X quickly proved to us that she could produce with the very best in our herd. She is bold ribbed, stout based, sound in her feet and legs and long bodied. She originates from our Foxtrot cow family on the bottom side combined with the high dollar ROMN Justice son, RPY Paynes Signal 6S. Her sons have always been at the top of the pen for their easy going nature, structural correctness and breed character. This is the first time she has been mated to Bubba Watson 24B and it promises to be a quick ROI.

Observed bred to Ivy's Bubba Watson 24B :: Due January 24, 2018 (Safe)
Exposed to Ivy's Bubba Watson 24B from April 17 – May 17

Production Record:

- Z – B Bar Iron Clad 22Z sold to Mitchell Farms, MB
- A – B Bar Chivas Regal 22A sold to Wedrick Stock Farms, SK
- B – B Bar Foxtrot 22B retained in herd
- C – B Bar Foxtrot 29C – culled
- D – B Bar Jaguar 28D sold to Short Grass Limousin, SK
- E – B Bar Foxtrot 32E retained in herd



Daughter B Bar Foxtrot 29C



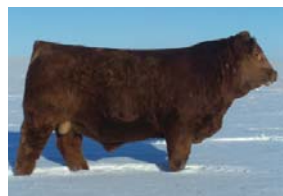
Son B Bar Chivas Regal 22A



Daughter B Bar Foxtrot 32E



Service Sire



Son B Bar Iron Clad 22Z



Son B Bar Jaguar 28D



Daughter B Bar Foxtrot 22B



28

ANCHOR B POLLED JEOPARDY 206X

Sire: ROMN JUSTICE
ROMN MADE TO ORDER
ROMN MISS THICK 34K

MBH 206X / 94% / CPF0207558 / Hetero Pld / Red / 13 Jan 2010

Dam: HC POLLED GARRET
B BAR POLLED JEOPARDY
PREMIUM POLL CARMEN

BW: 87	Adj. 205: n/a	Adj. 365: 1003								
CED 5	BW 2.5	WW 68	YW 96	MK 29	CEM 8	SC 0.8	DOC 20	REA 0.68	MB -0.34	

Anchor B Jeopardy 206X is a direct daughter of the tremendous breeding bull ROMN Made To Order off our B Bar Jeopardy 9J cow. The cow family is known for producing powerful individuals, that milk heavy, have massive volume and breed character. Jeopardy 206X has been a solid cow for us and has a very powerful Birubi Jupita J15 bull calf along side her this year. The mating to the \$16,000 JYF Chunk 35C promises to be very exciting and should provide a nice pay cheque!

AI bred to JYF Chunk 35C :: Due January 16, 2018 (Safe)
Exposed to Ivy's Bubba Watson from April 9 - May 17

- Production Record:**
 Z - B Bar Double Jeopardy 33Z - culled
 A - B Bar Jeopardy 13A sold to Revolution Catttle Co., ON
 B - B Bar Jeopardy 11B - culled
 C - B Bar Quartz 19C sold to Dean Simonson, SK
 D - B Bar Jeopardy 2D sold to South Fork Ranch, SD
 E - B Bar India 27E sells as Lot 9



Daughter B Bar Jeopardy 11B



Service Sire



Son selling as Lot 9



Daughter B Bar Jeopardy 2D



Daughter B Bar Jeopardy 13A



Son B Bar Quartz 19C

B Bar Whiskey Girl Embryos

Donor: BEA 118W CPF0198722

ROMN MADE TO ORDER x B BAR POLLED NICOLE

CED	BW	WW	YW	MK
7	1.2	71	102	30
CEM	SC	DOC	REA	MB
7	0.90	36	0.78	-0.49

Sire: JYF 35C CPM4077251

WULFS ZEPHYR X624Z X TMF MISS 186W

CED	BW	WW	YW	MK
1	4.8	87	118	26
CEM	SC	DOC	REA	MB
0	1.60	24	1.11	-0.12

B Bar Whiskey Girl 118W has become one of our most consistent producers and is most noted for her two sons, the \$30,000 Slate 17C and the \$32,000 Bentley 8D. She has put other sons at Snakebite Coulee Ranch, SK, and Reg Griffen, SK and her current year bull calf sells as Lot 16. Her 2 daughters have been retained in herd and each have a son in this sale; Lots 6 and Lot 7. 118W is a

direct daughter of the powerful ROMN Made To Order and past donor and show cow B Bar Nicole 4N. The mating to the \$16,000 homozygous polled powerhouse JYF Chunk 35C promises to be extremely exciting. Do not miss out on the chance to get the first embryos out of this potent donor with the combo of Chunk 35C whose semen is limited on the market

3 embryos. Guarantee of one (1) 90 pregnancy if implanted by accredited veterinarian.

Exportable to USA and AUS



Embryos
29

Anchor B Ultimate Dream Embryos

Donor: MBH 101U CPF0192614

ROMN MADE TO ORDER x B BAR MOLLY

CED	BW	WW	YW	MK
1	4.7	75	103	29
CEM	SC	DOC	REA	MB
5	1.00	5	0.67	-0.31

Sire: HUNT 37C NPM2074458

HUNT TESTAMENT 40T X JKTW WHISKEY RIVER

CED	BW	WW	YW	MK
10	0.9	79	110	32
CEM	SC	DOC	REA	MB
7	0.70	23	0.44	0.06

Anchor B Ultimate Dream 101U is gorgeous in the flesh, long bodied, bold ribbed, beautiful udder, loads of volume, all in a sound functional package. She has a weaning index of 106 on 8 progeny. Her daughters are becoming some of our most productive young females. In 2015 we sold pick of our heifer calf crop at CWA for \$16,000, Matt Heleniak of Hawkeye Land & Cattle selected B Bar Molly 11C, a daughter of Ultimate Dream 101U. She has put bulls in progressive commercial herds of Hale Stock Farms, SK and 2 at Michael Johnson's, SK. The mating to the outcross, homozygous polled, dark cherry red Hunt Credentials 37C ET should add tremendous balance and value to this impressive cow.

3 embryos. Guarantee of one (1) 90 pregnancy if implanted by accredited veterinarian.

Exportable to USA and AUS



Embryos
30

B Bar Urban Girl 2B Embryos

Donor: UZX 2B CPF0217772

RPY PAYNES DERBY 46Z X ANCHOR B URBAN GIRL

CED	BW	WW	YW	MK
6	2.0	77	106	36
CEM	SC	DOC	REA	MB
8	0.90	9	0.56	-0.38

Sire: UZX 17C CPF0221472

DVCL MR UNBELIEVABLE U03 X B BAR WHISKEY GIRL

CED	BW	WW	YW	MK
5	2.4	72	97	30
CEM	SC	DOC	REA	MB
8	1.2	20	0.64	-0.37

It did not take long for B Bar Urban Girl 2B to find the donor pen. She is extremely powerful in her design, has a show quality udder and carries it all in an elegant package. Her first son sold to Dean Simonson, SK and this year she has the Lot 1 feature bull calf and truly impressive heifer calf that is pegged to be offered next year as a bred. She is numerically impressive, genetically impressive and phenotypically impressive! The mating to the \$30,000 homozygous polled B Bar Slate 17C adds strong projected and actual numbers along with the strength of our B Bar Nicole 4N cow family to this genetic package.

3 embryos. Guarantee of one (1) 90 pregnancy if implanted by accredited veterinarian.

Exportable to USA and AUS



Embryos
31

IVY'S BUBBA WATSON HTZ24B

HTZ 24B / 92% / CPM0219201
Homo Pld / Red / 15 Jan 2014

ROMN TUFF ENUFF 103T
Sire: **IVY'S MARKSMAN HTZ 10Z**
IVY'S XPECT THE BEST 47X
AUTO DOLLAR GENERAL 122R
Dam: **IVY'S UNIQUE PERFECTION 3U**
IVY'S UNIQUE PERFECTION 3U

BW:	86	Adj. 205:	752	Adj. 365:	1288
CED	12	BW	-0.1	WW	72
CEM	9	SC	0.70	YW	102
		DOC	32	MK	38
		REA	0.46	MB	-0.18

- Lot 32A - 5 Canadian Qualified doses
- Lot 32B - 5 Canadian Qualified doses
- Lot 32C - 5 Canadian Qualified doses
- Lot 32D - 5 Canadian Qualified doses



Semen
32

Owned with Ivy Livestock, AB (Rick and Mary Hertz) 403.793.4994
* stored at Alta Genetics

Footnotes:



Daughter, B Bar Nicole 1D



\$32,000 son



\$10,000 son



\$15,000 son

LFLC DOLLAR BILL 764D

LFLC 764D / 91% / NPM2110517
Homo Pld / Hetro Black / 22 Feb 2016

WULFS WALCOTT F711W
Sire: **LFLC ACE 750A**
LFLC YO GO 750Y
WZRK MR TUFF ENUFF 6027W
Dam: **LFLC DAKOTA BELLE 764Y**
ELOR SWEET HONESTY 900J

BW:	81	Adj. 205:	798	Adj. 365:	1319
CED	13	BW	0.0	WW	71
CEM	3	SC	1.30	YW	92
		DOC	24	MK	27
		REA	0.32	MB	-0.09

- Lot 33A - 10 Canadian Qualified doses
- Lot 33B - 10 Canadian Qualified doses
- Lot 33C - 10 Canadian Qualified doses
- Lot 33D - 10 Canadian Qualified doses
- Lot 33E - 10 Canadian Qualified doses
- Lot 33F - 10 Canadian Qualified doses
- Lot 33G - 10 Canadian Qualified doses
- Lot 33H - 10 Canadian Qualified doses
- Lot 33I - 10 Canadian Qualified doses
- Lot 33J - 10 Canadian Qualified doses

* No other semen available until fall of 2018!
* stored at Alta Genetics



Semen
33

As I was delivering cattle in the states in April this year I had come across updated pictures of sale bulls that Ludens had posted on FB. I was not far from their operation in South Dakota and although the sale was over, some of the bulls were still there. On my tour through I was instantly drawn to their lead off bull, Dollar Bill. Massive in his design, stout based, bold ribbed, good footed, cocky herdbull presence, easy going demeanour and lots of hair, truly a Canadian style bull! A look through the cowherd and I saw his functional, sound made, dam and grandams which only furthered my excitement for the bull. After studying him on paper I realized he has a unique pedigree that is scarce in Canada, strong projected and actual numbers, heterozygous black and homozygous polled. After some discussion with Ludens and new owner of the bull Jay Langdeau of South Fork Ranch, we were able to secure the Canadian semen rights. Here is the next black bull to put on the Responder and Architect genetic lines that have become so dominant in the Canadian herdbook.

*Canadian Semen Rights: B Bar Cattle, SK
*Owned by South Fork Ranch, SD and Ludens Family Limousin Cattle, SD

YE
AR
LING

HE
IF
ERS
O
PEN
/
B
RE
D

P
R
O
D
U
C
E
R
S

E
M
B
R
Y
O
S

S
E
M
E
N



BOHRSON
MARKETING SERVICES

RR 4 - Site 7 - Box 28 • Olds, AB • T4H 1T8



RETURN POSTAGE GUARANTEED
PORT DE RETOUR GARANTI

