

THE
Cowtown
CLASSIC

L i m o u s i n S a l e

Friday, February 1, 2019 • Fort Worth, Texas

6 p.m. ~ at the Fort Worth Stock Show

West Arena of the Bass-Richardson Building

CONSIGNORS...

CHACHERE CATTLE CO. - DAYTON, TX
MATT CHACHERE (936) 346-3246
LOT 46

COYOTE HILLS RANCH - CHATTANOOGA, OK
KEN HOLLOWAY - (580) 581-7652
LOTS 35, 36

DAVIS LIMOUSIN RANCH - BROWNWOOD, TX
BRAD DAVIS - (325) 647-7681
LOT 45

DIAMOND HILL CATTLE CO. - OKLAHOMA CITY, OK
MARK BARKER - (405) 520-5846
LOTS 3, 4, 5, 13, 14

**GOLDEN TATE III INVESTMENTS
MANAGEMENT, R&R MARKETING - (615) 330-2735**
LOT 47

HALL CATTLE CO. - SWEETWATER, TX
KEN HOLLOWAY - (580) 581-7652
LOTS 34, 35

HAYHOOK LIMOUSIN - LEXINGTON, KY
JUDY BUGHER (405)306-1315 - EDNA MANNING (405) 306-1316
LOTS 22, 23, 24, 25, 26, 27, 41, 42, 43, 44

LAWRENCE FAMILY LIMOUSIN - ANTON, TX
BRUCE LAWRENCE - (806) 790-2535
LOTS 1, 2, 3, 28, 29, 30

MAGNESS LAND & CATTLE - PLATTEVILLE, CO
GAY MAGNESS, owner; JOHN PENCE (970) 396-3584
LOTS 10, 11, 12

STOWERS LAND & CATTLE - BRIDGEPORT, TX
JASON GASTON - (817) 247-8011
LOTS 7, 8, 9, 31, 32, 33

PARKINSON CATTLE CO. - LEVELLAND, TX
AMBER PARKINSON - (806) 773-6043
LOTS 15, 16

TUCKER PARKINSON - LEVELLAND, TX
AMBER PARKINSON - (806) 773-6043
LOTS 38, 39

WIES LIMOUSIN RANCH - WELLSVILLE, MO
BOB & EUVONNE WIES, owners
HEATHER HENDERSON, MGR. 573.220.5768
LOTS 17, 20, 21, 22, 40



ONLINE BIDDING AVAILABLE HOW TO PARTICIPATE AS AN ABSENTEE BUYER

We have made preparations to bid and buy livestock through Superior Productions' "Call or Click-To-Bid" service for those unable to attend in person on sale day. Please note that all of the lots in the sale will also be available for viewing online prior to sale day at www.superiorlivestock.com.

HERE'S HOW IT WORKS

TURN IN BIDS OVER THE PHONE. This is our traditional method of buying livestock. To get started simply go online to www.superiorlivestock.com and click on the tab titled "Register for a Buyer Number". Select the registration form for Superior Productions and print the registration form, fill it out and fax it in to Superior Productions at (817) 378-3380 with a signature on it, or scan and email the form to info@superiorauction.com. You can also mail it in to the address provided on the form. Upon receipt of this information Superior will call you with a buyer's number and the bid line phone number that you will use on sale day to place bids over the phone.

CLICK-TO-BID. This is Superior's online bidding platform for cattle buying. Please note that high speed internet is required - this is not for dial-up or satellite internet. Registration is free, but you must become a member of www.superiorclicktobid.com to sign up. Becoming a member is easy - just go to the homepage of www.superiorclicktobid.com and follow the out-lined steps to get started. Input your information and select a username and password. You will receive an e-mail confirming you are a member. From that point forward you just have to sign in and select the sale you would like to register for and once approved you will receive an e-mail confirming which sale you are now registered for.

VIEWING THE AUCTION. There are 2 places to view the sale broadcast live on the internet: www.superiorlivestock.com or www.superiorclicktobid.com. Just go to the home page of either website and select the auction. If you just want to watch the auction on your computer, smartphone or tablet go to www.superiorlivestock.com, but if you want to bid over the computer you must go to www.superiorclicktobid.com. Remember you can call in to bid on the internet, but you must be a member of www.superiorclicktobid.com to "clickto-bid". Your computer must have Flash Media Player installed for this website to view the auction. If you have any questions, please call the Superior Productions office at 800-431-4452.

***If you plan to bid by phone through Superior Livestock or 'Click-to-Bid', you must register at www.superiorlivestock.com prior to bidding.**

BUYER TRUCK & TRAILER PARKING

Buyers may park their trucks and trailers in the Farrington Field parking lot. This is just off of University east of the Stock Show grounds. Shuttle will be available. Please advise parking attendant you are attending the Limousin cattle sale. If you need to have cattle hauled, we will be happy to assist in transporting your purchase.

Contact Brittni Allerkamp at (806) 500-8785 to make arrangements.

THE COWTOWN CLASSIC

Friday, February 1, 2019 • Fort Worth, Texas

6 p.m. ~ at the Fort Worth Stock Show

West Arena of the Bass-Richardson Building

**Featuring 47 Outstanding Lots
of Limousin genetics from leading breeders
in the Lone Star State and beyond.**

3 Open Heifers • 3 Pairs with Heifer Calves • 21 Bred Heifers • 17 Bulls • 3 Genetic Opportunities

SALE MANAGEMENT:



TEXAS LIMOUSIN ASSOCIATION
Brittini Allerkamp, Executive Secretary
PO Box 6097 • Lubbock, TX 79493
806/500-8785
texaslimousin@gmail.com
www.tlashowcase.com

View catalog online at

www.americancattleservices.com

AUCTIONEER

Ronn Cunningham

SALE MARKETING TEAM:

American Cattle Services

Ken Holloway • 580/581-7652

MC Marketing Management

Kiley McKinna • 402/350-3447

R&R Marketing

Randy Ratliff • 615/330-2735

Grassroots Consulting

Mark Smith • 515/229-5227

*Join us for a western weekend
in historic Fort Worth.*

Friday, February 1

6 p.m. Cowtown Classic Sale

Saturday, February 2

Noon Limousin MOE Show

5 p.m. TLA's Annual Membership Meeting, Richardson-Bass Building,
FWSS Grounds, Rooms D & E

7 p.m. TLA's Banquet & Benefit Auction, Richardson-Bass Building,
FWSS Grounds, Rooms D & E

HOTEL HEADQUARTERS:

SpringHill Suites Fort Worth University

3250 Lowell Ave., Fort Worth, TX 76107 • 817/878-2554



Open heifers with the Lone Star Shoot-Out logo are eligible to compete in the Lone Star Shoot-Out which will be held in conjunction with the Junior Limousin Heifer Show at the 2020 Fort Worth Stock Show. The Shoot-Out is open to Texas 4-H and FFA members who purchase a nominated heifer. This year's purse was \$10,000.

... All cattle sell under the standard
North American Limousin Foundation guarantee.

... All announcements made at sale time
take precedence over printed material.

... EPDs dated 1/4/2019



OPEN HEIFER

1 LFL FANCY PANTS 8006F ET

LIM-FLEX(56/50.3) • Homo Polled (P3) • Homo Black (P1)
2/16/2018 • BLAW 8006F • LFF2149877



- MAGS WINSTON
- MAGS ZODIAC**
- MAGS XANTHOUS
- BASIN FRANCHISE P142
- LFL WINNERS CIRCLE 9057 W**
- TARA JO 7132T

BW: 72 • Adj. WW: 580 • Adj. YW: 998

OFFERED BY: LAWRENCE FAMILY LIMOUSIN

LFL Fancy Pants is named appropriately with her striking profile and a very gentle disposition that also is very sound structured!

EPDs	
CE:	12
BW:	0.8
WW:	63
YW:	104
MK:	20
TM:	52
CM:	7
SC:	0.7
DC:	12
YG:	-31
CW:	26
RE:	.61
MS:	.01
\$MTI:	52



OPEN HEIFER

2 LFL FRANCESCA 8065F ET

PERCENTAGE(78/66) • Homo Polled (P3) • Homo Black (P2)
5/10/2018 • BLAW 8065F • NXF2149901



- AUTO CRUZE 132X
- AUTO REAL DEAL 150B**
- AUTO LUCKIE TOO 423Y
- MAGS ZODIAC
- MAGS CANDREA**
- MAGS ANDREA

BW: 73 • Adj. WW: 724

OFFERED BY: LAWRENCE FAMILY LIMOUSIN

If you like one with a big butt and deep body that ranks in the top 10% in WW and YW and will show with the Purebred at Junior Nationals, then you need to take a long look at LFL Francesca!

EPDs	
CE:	10
BW:	2.3
WW:	72
YW:	112
MK:	20
TM:	56
CM:	4
SC:	0.7
DC:	10
YG:	-45
CW:	25
RE:	.75
MS:	-.22
\$MTI:	48



OPEN HEIFER

3 LFL FREDRICA 8157F ET

PERCENTAGE(79/71.2) • Het Polled (T) • Homo Black (P1)
6/5/2018 • BLAW 8157F • NXF2153870



- MAGS WINSTON
- MAGS AVIATOR**
- MAGS XTRA REST
- GPFF BLAQUE RULON
- ALMA JO DHVO 723R**
- AMY JO DHAN 20L

BW: 69

OFFERED BY: LAWRENCE FAMILY LIMOUSIN

LFL Fredrica is a flushmate to LFL Daisy, LFL Estelle, LFL Extravagent and LFL Emma Jo. This is one of the most successful flushes at Lawrence Family Limousin. Fredrica is no exception! Study her striking profile. This feminine fronted, sound structured female is sure to get her share of pictures made at the backdrop. Don't miss this opportunity to buy into the predictability this female has to offer.

EPDs	
CE:	14
BW:	0.0
WW:	53
YW:	78
MK:	18
TM:	45
CM:	7
SC:	0.3
DC:	17
YG:	-45
CW:	11
RE:	.86
MS:	-.13
\$MTI:	45

PAIR

4

DHIL LABELLA 8298D

LIM-FLEX(43/38.8) • DBL Polled • DBL Black
4/8/2016 • BDHC 6296D • LFF2105597



Calf 4A

- MAGS XUKALANI
- **MAGS ALL-STAR 700A**
- MAGS YORKSHIRE PUDDING
- EXAR UPSHOT 0562B
- **BDHC LABELLA 2963Z**
- MAGS LABELLA

BW: 61 • Adj. WW: 547 • Adj. YW: 813

OFFERED BY: DIAMOND HILL CATTLE CO.

LOT 4A—BDHC 131E, a 9/3/18 homo black/dbl polled 49% Lim-Flex heifer by CJSL Creed 5042C, BW: 76. EPDs—CD: 16 BW: -0.3 WW: 64 YW: 102 MK: 23 TM: 55 CM: 8 SC: 1.2 DC: 13 YG: -.23 CW: 22 RE: .70 MB: .28 \$MTI: 61

AI'd 11.26.18 to CJSL Creed 5042C.

PE'd 12.11.18 to 1.10.19 to LFL Dividend 6024D.

EPDs	AI	PE
CE: 14	16	13
BW: -0.3	-0.3	0.8
WW: 63	64	69
YW: 103	102	111
MK: 25	23	23
TM: 57	55	58
CM: 6	8	7
SC: 1.9	1.2	1.2
DC: 11	13	16
YG: -.24	-.23	-.29
CW: 33	22	24
RE: .77	.70	.75
MS: .20	.28	.08
\$MTI: 59	61	57



LOT 4



LOT 4A

PAIR

5

DHIL LEGAL 894D

LIM-FLEX(65/57.9) • Homo Polled (T) • Homo Black (T)
7/19/2016 • BDHC 694D • LFF2110772



Calf 5A

- MAGS XUKALANI
- **MCBN ZADOK BROWN 226Z**
- AUTO BLACK TANGERINE 270T
- MAGS YINGI
- **HAHK BOSTON LEGAL 94B**
- JONK POLLED XTRA LOVELY

BW: 76 • Adj. WW: 536 • Adj. YW: 888

OFFERED BY: DIAMOND HILL CATTLE CO.

LOT 5A—BDHC 156F, a 9/14/18 dbl black, dbl polled 57% Lim-Flex heifer by MAGS Bold Choice 8100B, EPDs—CD: 13 BW: -0.1 WW: 60 YW: 88 MK: 17 TM: 47 CM: 8 SC: 1.1 DC: 12 YG: -.42 CW: 20 RE: .80 MB: -.02 \$MTI: 50

AI'd 11.26.18 to DHIL Colt 5798C.

PE'd 12.11.18 to 1.10.19 to LFL Dividend 6084

EPDs	AI	PE
CE: 12	13	12
BW: 0.5	0.5	1.2
WW: 68	67	72
YW: 102	102	110
MK: 12	18	17
TM: 45	51	53
CM: 6	7	7
SC: 0.7	0.9	0.6
DC: 14	13	17
YG: -.42	-.42	-.39
CW: 24	34	20
RE: .92	1.11	.84
MS: -.01	-.08	-.01
\$MTI: 54	50	55



LOT 5

PAIR

6

DHIL DANITA 8153D

LIM-FLEX(46/41.8) • Homo Polled (P3) • DBL Black
10/30/2016 • BDHC 6153D • LFF2129094



Calf 6A

- EXAR UPSHOT 0562B
- **LH ADVANTAGE 105A**
- EXLR DUCHESS 7129R
- CHR XPERT 176X
- **LH ANITA 153A**
- HALL ENCHANTRESS 601T

BW: 64 • Adj. WW: 542 • Adj. YW: 899

OFFERED BY: DIAMOND HILL CATTLE CO.

LOT 6A—BDHC 113F, a 9/1/18 dbl black, homo polled 51% Lim-Flex heifer by TMCK Camden Yards 195C, EPDs—CD: 13 BW: -0.4 WW: 68 YW: 112 MK: 24 TM: 58 CM: 9 SC: 1.0 DC: 12 YG: -.27 CW: 37 RE: .76 MB: .01 \$MTI: 54

AI'd 11.26.18 to LFL Dividend 6084D.

PE'd 12.11.18 to 1.10.19 to LFL Dividend 6084

EPDs	AI	PE
CE: 14	13	13
BW: -0.9	0.6	0.6
WW: 57	66	66
YW: 92	106	106
MK: 25	23	23
TM: 54	56	56
CM: 8	8	8
SC: 0.9	0.7	0.7
DC: 13	17	17
YG: -.16	-.25	-.25
CW: 39	27	27
RE: .54	.64	.64
MS: .13	.06	.06
\$MTI: 53	54	54



LOT 6



LOT 6A



LOT 7

7

SSTO EXTRAYAGANT 701E ET

LIM-FLEX(50/43.8) • Het Polled (T) • Homo Black (P2)
1/8/2017 • SSTO 701E • LFF2116911

S A V BRILLIANCE 8077
PVF INSIGHT 0129
 PVF MISSIE 790
 DHVO TREY 133R
PBRS YOUR THE ONE 1134Y
 CARROUSELS PINA COLADA

BW: 69 • Adj. WW: 661 • Adj. YW: 863 • UFAT: 0.23 • UREA: 13.44 • UIMF: 3.59

OFFERED BY: STOWERS LIMOUSIN

AI'd 5.29.18 to MAGS Aviator.

This 50% Lim-Flex bred female represents one powerful and strong pedigree from Stowers and she's homozygous black. She is a daughter of the Stowers donor, PBRS Your The One 1134Y and from the purebred sire, PVF Insight 0129. She is made as perfect as you would want and ranks in the top 1% for CW and top 10% for REA.

EPDs	AI
CE:	9 13
BW:	0.6 -0.1
WW:	57 60
YW:	88 93
MK:	20 18
TM:	48 47
CM:	4 7
SC:	0.8 0.4
DC:	12 16
YG:	-37 -28
CW:	50 39
RE:	1.26 .98
MS:	-.09 .06
\$MTI:	47 53

BRED HEIFER



LOT 8

8

SSTO EMILY 7819E

LIM-FLEX(50/45.4) • Homo Polled (T) • Homo Black (T)
2/1/2017 • SSTO 7819E • LFF2115134

TC ABERDEEN 759
EBFL YPSILANTI 420Y
 MAGS RAMADA
 MAGS XTRA WET
RRDC 3042 A
 RRA BLACKBIRD 0045

BW: 68 • Adj. WW: 523 • Adj. YW: 725 • UFAT: 0.09 • UREA: 9.17 • UIMF: 3.25

OFFERED BY: STOWERS LIMOUSIN

AI'd 3.25.18 to EF Xcessive Force.

A double homozygous, 50% Lim-Flex heifer from the keeper pen at Stowers. This heifer is well made, strong in her stance and feminine up through her front end. She is sired by EBFL Ypsilanti 420Y and from a daughter of MAGS Xtra Wet from a purebred Angus.

EPDs	AI
CE:	10 12
BW:	1.5 -0.5
WW:	66 62
YW:	92 90
MK:	20 14
TM:	53 45
CM:	5 8
SC:	0.9 1.3
DC:	17 14
YG:	-31 -16
CW:	27 29
RE:	.67 .48
MS:	.12 .09
\$MTI:	57 53

BRED HEIFER



LOT 9

9

SSTO ELAINE 7846E

LIM-FLEX(56/50.7) • Homo Polled (P2) • Homo Black (P2)
2/22/2017 • SSTO 7846E • LFF2127971

MAGS WINSTON
MAGS ZODIAC
 MAGS XANTHOUS
 LH RODEMASTER 338R
MAGS ASHBY
 MAGS RAPHAELA

BW: 78 • Adj. WW: 578 • Adj. YW: 818 • UFAT: 0.25 • UREA: 13.35 • UIMF: 4.74

OFFERED BY: STOWERS LIMOUSIN

AI'd 3.25.18 to EBFL Ypsilanti 420Y.

This 56% Lim-Flex is double homozygous and one well-bred female from the heart of the Stowers program. Sired by the leading sire MAGS Zodiac and from a daughter of LH Rodemaster 338R from the elite donor MAGS Raphaela. She ranks in the top 10% YW, top 15% for WW, TM and CW, and top 20% for \$MTI.

EPDs	AI
CE:	10 10
BW:	2.4 2.4
WW:	70 77
YW:	114 116
MK:	23 23
TM:	58 61
CM:	5 6
SC:	0.8 1.1
DC:	13 13
YG:	-.45 -.41
CW:	28 24
RE:	.92 .85
MS:	-.02 .12
\$MTI:	54 60

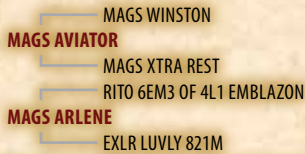
BRED HEIFER

This exceptional trio of half sisters are by the breed's hottest, number one Lim-Flex A.I. sire by registrations and an individual who was recently appraised at a staggering \$50,000 valuation—MAGS AVIATOR! If you like attractive patterned, big footed, bold ribbed, thick made cattle then these popular pedigreed females should suit you to a 'T'. Note, these low maintenance, moderate made Aviator daughters all share the good fortune of carrying a distinct calving-ease advantage, boast obvious maternal and marbling advantages. This sale feature has been presented to you by one of the leading Limousin firms in the country, Magness Land & Cattle, for your much appreciated appraisal February 1.

BRED HEIFER

10 MAGS ENDLESS DESIRE

LIM-FLEX(54/49) • Homo Polled (P2) • Homo Black (T)
1/14/2017 • MAGS 533E • LFF2114812



BW: 82 • Adj. WW: 653 • Adj. YW: 924 • UFAT: 0.42 • UREA: 10.22 • UIMF: 6.06

OFFERED BY: MAGNESS LAND & CATTLE

AI'd 4.16.18 to ELCX Benchwarmer 363B. Safe. Approx. Due 1/21/19.

PE'd 5.8.18 - 7.30.18 to PBRS Encore 7195E.

PE'd 6.22.18 - 7.30.18 to MAGS En Route.

EPDs	AI
CE:	13 14
BW:	0.9 -0.3
WW:	62 59
YW:	94 91
MK:	18 21
TM:	49 50
CM:	6 8
SC:	0.3 1.1
DC:	15 15
YG:	-23 -06
CW:	15 17
RE:	.59 .30
MS:	.16 .35
\$MTI:	56 61



MAGS AVIATOR
Sire of Lots 10, 11 & 12

BRED HEIFER

11 MAGS EMI

LIM-FLEX(54/50) • Homo Polled (T) • Homo Black (P2)
2/10/2017 • MAGS 642E • LFF2115814



BW: 78 • Adj. WW: 709 • Adj. YW: 1,007 • UFAT: 0.28 • UREA: 11.26 • UIMF: 4.18

OFFERED BY: MAGNESS LAND & CATTLE

AI'd 4.19.18 to ELCX Benchwarmer 363B

PE'd 5.8.18 to 7.30.18 to PBRS Encore 7195E. Safe.

Approx. Due 3/4/19.

PE'd 6.22.18 to 7.30.18 to MAGS En Route.

EPDs	PE1
CE:	11 11
BW:	1.4 1.6
WW:	69 67
YW:	104 102
MK:	16 18
TM:	51 52
CM:	6 7
SC:	0.3 0.6
DC:	14 15
YG:	-34 -27
CW:	17 16
RE:	.64 .56
MS:	-.01 22
\$MTI:	53 61



Paternal Sister to Lots 10, 11 & 12

BRED HEIFER

12 MAGS EVERGREEN

LIM-FLEX(59/53.3) • Homo Polled (T) • Homo Black (T)
3/10/2017 • MAGS 748E • LFF2117045



BW: 74 • Adj. WW: 614 • Adj. YW: 918 • UFAT: 0.26 • UREA: 9.52 • UIMF: 5.42

OFFERED BY: MAGNESS LAND & CATTLE

AI'd 4.23.18 to ELCX Benchwarmer 363B. Safe. Approx. Due 1/28/19.

PE'd 5.8.18 to 7.30.18 to PBRS Encore 7195E.

PE'd 6.22.18 to 7.30.18 to MAGS En Route.

EPDs	AI
CE:	13 14
BW:	1.6 0.1
WW:	55 55
YW:	87 88
MK:	24 24
TM:	51 51
CM:	7 9
SC:	.3 1.1
DC:	15 15
YG:	-.24 -.07
CW:	21 20
RE:	.55 .28
MS:	.18 .18
\$MTI:	55 60



Paternal Sister to Lots 10, 11 & 12



LOT 13

BRED HEIFER

13 DHIL SCOTCH CAP 6100D ET

LIM-FLEX(75/66.3) • DBL Polled • Homo Black (P1)
4/20/2016 • BDHC 6100D • LFF2098106

— GPFF BLAQUE RULON
— **DHVO DEUCE 132R**
— AMY JO DHAN 20L
— RADS BLACK PRODIGY
— **EXLR SCOTCH CAP 1005N**
— EXAR SCOTCH CAP 1548

BW: 77 • Adj. WW: 514 • Adj. YW: 769

OFFERED BY: DIAMOND HILL CATTLE CO.

AI'd 5.19.18 to DHIL Colt 5793C.

A sout-made, high-quality daughter of the four-time National MOE Gold Medal bull, Deuce.

EPDs	AI
CE: 9	11
BW: 1.5	1.0
WW: 63	64
YW: 92	97
MK: 22	23
TM: 53	55
CM: 5	6
SC: 1.0	1.0
DC: 12	12
YG: -.46	-.43
CW: 15	29
RE: .85	1.02
MS: -.26	-.21
\$MTI: 43	44



LOT 14

BRED HEIFER

14 DHIL DANESSA 6284D

LIM-FLEX(50/44.5) • Homo Polled (P3) • Homo Black (P1)
10/30/2016 • BDHC 6284D • LFF2129095

— S A V BRILLIANCE 8077
— **AUTO NEW ROADS 190A**
— AUTO MANUELA 298S
— EXAR DENVER 2002B
— **AUTO VANESSA 284B ET**
— AUTO PEYTON 206Y

BW: 64 • Adj. WW: 545 • Adj. YW: 902

OFFERED BY: DIAMOND HILL CATTLE CO.

PE'd 5.10.18 to 7.25.18 to DHIL Colt 5793C, observed bred 6.4.18.

A deep-ribbed, highly maternal, sound female who ranks in the top 25% for WW, YW, MK, TM, SC, CW, MB and \$MTI. Sells safe to DHIL Colt, the top seller in the 2017 Hall-CHR Bull Sale.

EPDs	PE
CE: 12	13
BW: 1.1	0.8
WW: 68	67
YW: 109	106
MK: 24	24
TM: 58	57
CM: 7	7
SC: 1.0	1.0
DC: 10	11
YG: -.21	-.31
CW: 30	36
RE: .70	1.00
MS: .19	-.04
\$MTI: 59	53



LOT 15

BRED HEIFER

15 PC 703E

LIM-FLEX(62/56.9) • Het Polled (T) • Homo Black (T)
6/1/2017 • JNPF 703E • LFF2137407

— EF XCESSIVE FORCE
— **PCC BLACKHAWK 507C ET**
— LFL BONNIE 3060N
— JCL LODESTAR 27L
— **PBRS TODAY 157T**
— SUMMITCREST GAYBIRD 4P38

BW: 78 • Adj. WW: 648 • Adj. YW: 951 • UFAT: 0.39 • UREA: 11.42 • UIMF: 3.75

OFFERED BY: PARKINSON CATTLE CO.

PE'd 7-15-18 to 9-15-18 to LFL Deluxe Edition, the 2018 Denver Reserve Grand Champion Bull who is proving himself to be a calving-ease sire and whose progeny are going to have worlds of eye appeal.

PC 703 ranks in the top 10% CED, 15% BW, 4% CEM, 30% SC, 15% ST, 10% CW and 25% MB.

EPDs	PE
CE: 15	13
BW: -.09	-.07
WW: 56	52
YW: 91	81
MK: 21	20
TM: 50	46
CM: 10	8
SC: 0.9	0.9
DC: 12	13
YG: -.19	-.18
CW: 30	23
RE: .52	.43
MS: .00	.07
\$MTI: 49	50

BRED HELPER

18

PC ELAINA 710E

PERCENTAGE(77/69.5) • Homo Polled (P1) • Het Black (T)
3/7/2017 • TKJP 710E • NXF2138208

TMCK HYDRAULIC 17Y
TMCK ARCHITECT 031A
 TMCK LA VEDA 909Y
 DHVO TREY 133R
XOXO HUGS & KISSES
 LFL TANGO GIRL 7106T

EPDs	PE
CE:	11 11
BW:	1.0 0.3
WW:	68 58
YW:	100 85
MK:	16 17
TM:	50 46
CM:	6 6
SC:	0.4 0.6
DC:	18 16
YG:	-.54 -.36
CW:	15 15
RE:	1.11 .73
MS:	-.23 -.05
\$MTI:	47 49

BW: 76 • Adj. WW: 551 • Adj. YW: 797 • UFAT: 0.27 • UREA: 9.90 • UIMF: 3.89

OFFERED BY: TUCKER PARKINSON

PE 7-15-18 to 9-15-18 to LFL Deluxe Edition, the 2018 Denver Reserve Grand Champion Bull who is proving himself to be a calving-ease sire and whose progeny are going to have worlds of eye appeal.

PC Elaina ranks in the top 25% WW, 35% YW, 10% DC and 20% RE. Elaina's dam is a flushmate to HCC Apple Pie, the 2015 Grand Champion Junior Limousin Heifer at the Fort Worth Stock Show.



LOT 18

BRED HELPER

17

WLR DOLLY

LIM-FLEX(73/65.4) • DBL Polled • Homo Black (P2)
9/11/2016 • BJLR 026D • LFF2105784

EF XCESSIVE FORCE
RLBH AIR FORCE ONE
 EF YAFFA 821Y
 DHVO DEUCE 132R
STSF HOODOO LOVE 026Z
 AUTO LILY 221U

EPDs	PE
CE:	10 10
BW:	1.2 0.9
WW:	67 61
YW:	101 94
MK:	17 22
TM:	50 52
CM:	7 6
SC:	1.0 —
DC:	16 12
YG:	-.32 -.22
CW:	25 32
RE:	.64 .59
MS:	-.04 .09
\$MTI:	51 54

BW: 70

OFFERED BY: WIES LIMOUSIN RANCH

PE'd 7.28.18 to 9.30.18 to WLR Cold Play.

She is sired by the ever-popular sire RLBH Air Force One. From a daughter of the national champion, DHVO Deuce 132R and back to the proven donor AUTO Lily 221U. This higher percentage female (73%) represents the WLR program, 43 years strong! She sells bred to the OSU Class Act x WLR Prada son and herd sire for the Wies program, WLR Cold Play.



WLR COLD PLAY

Service Sire of Lot 17

BRED HELPER

18

WLR EFFIE ET

LIM-FLEX(75/67.6) • Homo Polled (T) • Homo Black (T)
4/3/2017 • BJLR 55E • LFF2135057

MAGS THE GENERAL
MAGS YIP
 AUTO CARMINDA 656S
 MYTTY IN FOCUS
L7 TIPSYS 759T
 MISS L7 518R

EPDs	PE
CE:	13 11
BW:	-.02 0.3
WW:	64 62
YW:	102 56
MK:	23 27
TM:	54 58
CM:	7 6
SC:	1.0 0.7
DC:	9 12
YG:	-.34 -.37
CW:	20 28
RE:	.51 .68
MS:	-.02 .00
\$MTI:	51 52

BW: 70 • Adj. WW: 635 • Adj. YW: 936

OFFERED BY: WIES LIMOUSIN RANCH

PE'd 6.1.18 to 7.4.18 to LVLS Black Crown.

This 75% Lim-Flex female is double homozygous. Sired by the elite purebred Limousin sire MAGS Yip. From the proven Wies donor, L7 Tipsy 759T. She is a daughter of Mytty In Focus who has always been a top producer in the Wies program. Her future calf will be sired by the MAGS Winston son, LVLS Black Crown.



L7 TIPSYS 759T

Dam of Lot 18



19

WLR ENID ET

LIM-FLEX(43/39.3) • Homo Polled (T) • Homo Black (T)
4/6/2017 • BJLR 52E • LFF2135060

- DAMERON FIRST CLASS
- EXAR BLUE CHIP 1877B
- GREENS PRINCESS 1012
- MAGS SHYLLO
- WLR UGLY BETTY 432U
- JCL HEIDI 2S

BW: 72 • Adj. WW: 633 • Adj. YW: 967

OFFERED BY: WIES LIMOUSIN RANCH

PE'd 6.1.18 to 7.4.18 to LVLS Black Crown.

This 43% Lim-Flex female is double homozygous. She is well-bred and a future donor in the making! She is a daughter of EXAR Blue Chip 1877B and from the big-time Wies donor, WLR Ugly Betty 432U. She ranks in the top 3% for MB and \$MTI. It is worth the trip to the Fort Worth Stock Show to consider this female for your program.

EPDs	PE
CE: 6	8
BW: 2.7	1.8
WW: 67	64
YW: 102	56
MK: 18	25
TM: 51	56
CM: 6	6
SC: 0.6	0.5
DC: 9	12
YG: -.07	-.23
CW: 23	30
RE: .30	.58
MS: .38	.20
\$MTI: 65	59

BRED HEIFER



20

WLR EYE ET

PERCENTAGE(81/74.2) • Het Polled (T) • Black
4/11/2017 • BJLR 91E • NXM2130664

- MAGS SASQUATCH
- MAGSWL USUAL SUSPECT 538U
- MAGS PHANTOMS PRIZE
- MAGS XYLOID
- ELCX CHRISTY 260Z
- AUTO CHRISTY 8889R

BW: 72 • Adj. WW: 621 • Adj. YW: 917

OFFERED BY: WIES LIMOUSIN RANCH

PE'd 7.28.18 to 9.30.18 to WLR Cold Play.

This 81% Limousin has a pedigree that represents only the finest that the Wies program has to offer. She is a full sibling to the Wies bull who is also selling in this sale. From the many-time champion female and Wies/ELCX donor, ELCX Christy 260Z, the proven daughter of the once supreme champion All-American Futurity champion bull, MAGS Xyloid. Her sire, MAGSWL Usual Suspect 538U, the once triple crown winning sire and one of the breed's hottest sires.

EPDs	PE
CE: 6	8
BW: 2.0	1.3
WW: 57	56
YW: 89	88
MK: 22	24
TM: 51	53
CM: 6	5
SC: 0.4	—
DC: 10	9
YG: -.50	-.31
CW: 15	27
RE: .79	.66
MS: -.22	.00
\$MTI: 43	50

BRED HEIFER



21

WLR EUYONNE

PUREBRED(100/90) • DBL Polled • Red
5/7/2017 • BJLR 599E • NPF2137094

- MAGS SASQUATCH
- MAGSWL USUAL SUSPECT 538U
- MAGS PHANTOMS PRIZE
- EF MAIN STAY 541M
- PBRS SOMETHING SWEET 599S
- MAGS JODI

BW: 70 • Adj. WW: 688 • Adj. YW: 973

OFFERED BY: WIES LIMOUSIN RANCH

PE'd 6.1.18 to 7.4.18 to LVLS Black Crown.

Purebred Limousin genetics at its finest. Sired by the once triple crown winning sire, MAGSWL Usual Suspect 538U, who just happens to the hottest purebred sire in the breed right now. From an elite Wies brood cow, PBRS Something Sweet 599S. She is a daughter of the once national champion, EF Main Stay 541M. She sells bred to the Wies herd sire LVLS Black Crown. He is a double homozygous 68% Lim-Flex son of MAGS Winston.

EPDs	PE
CE: 9	9
BW: 2.5	1.7
WW: 56	58
YW: 85	92
MK: 21	26
TM: 49	55
CM: 7	6
SC: -0.2	0.1
DC: 11	13
YG: -.70	-.55
CW: 4	20
RE: .97	.91
MS: -.40	-.19
\$MTI: 38	45

BRED HEIFER

22 HAHK DEBUTANTE 279D

LIM-FLEX(75/65.2) • DBL Polled • DBL Black
8/1/2016 • HAHK 279D • LFF2141950



BW: 73 • Adj. WW: 638 • Adj. YW: 1,016

OFFERED BY: HAYHOOK CATTLE CO.

PE'd 5.4.18 to 12.21.18 to MCBN 226Z, double homozygous son of MAGS Xukalani.

This big, stout 75% Lim-Flex heifer has it all. She will be an asset to any program. Check the pedigree which includes The Apprentice, Midland, and the great MAGS Sarafina. Easy to handle, gentle.

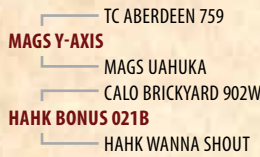
EPDs	PE
CE: 11	13
BW: 0.9	0.4
WW: 51	52
YW: 74	76
MK: 19	22
TM: 44	48
CM: 5	7
SC: 0.7	1.0
DC: 8	10
YG: -52	-39
RE: .71	.64
MS: -.16	.03
\$MTI: 44	50



LOT 22

23 HAHK DIVA B21D

LIM-FLEX(50/43.6) • DBL Polled • Dbl Black
9/9/2016 • HAHK B21D • LFF2122595



BW: 67

OFFERED BY: HAYHOOK CATTLE CO.

AI'd 5.14.18 to MAGS Zodiac.

PE'd 5.28.18 to 12.21.18 to MCBN 226Z, double homozygous son of MAGS Xukalani.

This female has tons of rib shape with an impressive pedigree which supports her obvious quality. She is gentle, with an easy-going temperament and will be an asset to any program.

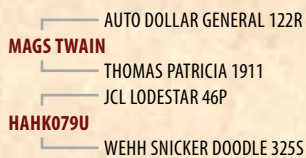
EPDs	AI	PE
CE: 13	12	14
BW: 0.4	1.3	-0.8
WW: 61	71	57
YW: 96	119	87
MK: 24	25	24
TM: 54	60	53
CM: 7	6	8
SC: 1.1	0.8	1.2
DC: 16	16	14
YG: -34	-30	-30
CW: 14	38	17
RE: .69	.76	.63
MS: .05	-.04	.13
\$MTI: 53	53	53



LOT 23

24 HAHK DETWAINA 079D

LIM-FLEX(75/65.4) • Homo Polled (P3) • Homo Black (P3)
10/8/2016 • HAHK 079D • LFF2122600



BW: 70 • Adj. WW: 732 • Adj. YW: 1,191

OFFERED BY: HAYHOOK CATTLE CO.

AI'd 5.4.18 to MAGS Zodiac.

PE'd 5.14.18 to 12.21.18 to MCBN 226Z, double homozygous son of MAGS Xukalani.

Double homozygous heifer whose pedigree includes some of the best in the breed. Predictability is built in.

EPDs	AI	PE
CE: 12	12	14
BW: 1.1	1.7	-0.5
WW: 63	72	58
YW: 97	119	88
MK: 26	26	25
TM: 58	62	55
CM: 6	5	7
SC: 0.7	0.6	1.0
DC: 12	14	12
YG: -39	-32	-32
CW: 25	44	23
RE: .68	.76	.63
MS: -.10	-.11	.06
\$MTI: 49	51	53



LOT 24



BRED HEIFER

25 HAHK DAWILDA 788D

LIM-FLEX(75/65.2) • DBL Polled • Homo Black (P1)
10/17/2016 • HAHK 768D • LFF2122601

— MNWS FRONTIER 507R
CLLL HAHK THE APPRENTICE
 — GPFF ALLIE
 — BC 7022 RAVEN 7965
HAHK WELDA 768W
 — MAGS SARAFINA

EPDs	AI	PE
CE:	10	11 13
BW:	1.8	2.0 -0.1
WW:	52	66 53
YW:	78	110 78
MK:	19	23 22
TM:	45	56 48
CM:	5	5 7

BW: 75 • Adj. WW: 717 • Adj. YW: 1,194

OFFERED BY: HAYHOOK CATTLE CO.

AI'd 5.16.18 to MAGS Zodiac.

PE'd 5.28.18 to 12.21.18 to MCBN 226Z, double homozygous son of MAGS Xukalani.

This stout 75% Lim-Flex heifer is out of the Triple Crown Purebred Champion The Apprentice and a daughter of MAGS Sarafina, a former donor for the Hayhook and a donor for the Edwards Land & Cattle Company program.

SC:	0.5	0.5 0.9
DC:	8	12 10
YG:	-.56	-.41 -.41
CW:	3	33 12
RE:	.80	.82 .69
MS:	-.23	-.18 .02
\$MTI:	42	47 49



BRED HEIFER

26 HAHK DEVRIKA A14D

LIM-FLEX(71/63.2) • DBL Polled • DBL Black
10/25/2016 • HAHK 414D • LFF2124473

— MAGS WINSTON
MAGS YINGI
 — MAGS WINGI
 — MAGS YINGI
HAHK ARIKA 414A
 — HAHK 414X

EPDs	AI	PE
CE:	10	11 13
BW:	1.6	1.9 -0.2
WW:	60	70 57
YW:	94	118 86
MK:	22	24 23
TM:	52	59 52
CM:	5	5 7

BW: 69 • Adj. WW: 661 • Adj. YW: 1,012

OFFERED BY: HAYHOOK CATTLE CO.

AI'd 5.4.18 to MAGS Zodiac.

PE'd 5.28.18 to 12.21.18 to MCBN 226Z, double homozygous son of MAGS Xukalani.

Moderate-framed, efficient and stylish female who is sure to add quality to any herd. Good attitude and easy to handle.

SC:	0.8	0.7 1.0
DC:	13	15 13
YG:	-.45	-.35 -.35
CW:	27	45 24
RE:	.87	.85 .72
MS:	.07	-.03 .14
\$MTI:	54	53 55



BRED HEIFER

27 HAHK DEIDRE 196T

PUREBRED(100/86.2) • DBL Polled • DBL Black
11/11/2016 • HAHK 196D • NPF2122603

— MNWS FRONTIER 507R
CLLL HAHK THE APPRENTICE
 — GPFF ALLIE
 — EXLR EXCELLANTE 251L
HAHK ULTIMATE 196TU
 — MIMA LISA

EPDs	AI	PE
CE:	10	11 13
BW:	1.4	1.8 -0.3
WW:	49	65 51
YW:	69	105 74
MK:	21	24 23
TM:	45	56 48
CM:	4	4 6

BW: 73 • Adj. WW: 744 • Adj. YW: 1,158

OFFERED BY: HAYHOOK CATTLE CO.

AI'd 5.16.18 to MAGS Zodiac.

PE'd 5.28.18 to 12.21.18 to MCBN 226Z, double homozygous son of MAGS Xukalani.

Pedigree includes CLLL HAHK The Apprentice, 2009 Champion Limousin at Kansas City, Louisville, Amarillo, and Gold MOE Bull in 2009. This easy-going purebred heifer will be an asset to any herd.

SC:	0.3	0.4 0.8
DC:	8	12 10
YG:	-.73	-.49 -.49
CW:	-4	29 8
RE:	.83	.83 .70
MS:	-.48	-.30 -.14
\$MTI:	33	43 45

28 LFL EDUCATOR 7006 E

PUREBRED(87/77.7) • Homo Polled (T) • Het Black (T)
2/1/2017 • BLAW 7006E • NPM2131462

WZRK PRIMESTAR 861P
WULFS XCLUSIVE 2458X
WULFS MISSIVE 2258M
DHVO TREY 133R
MAGS WILLOWY
BOHI RED ROBIN 282R

BW: 81 • Adj. WW: 720 • Adj. YW: 1,356
SC: 38.6 • UFAT: 0.30 • UREA: 14.82 • UIMF: 2.48

OFFERED BY: LAWRENCE FAMILY LIMOUSIN

Ranks in the top 30% WW, 35% YW, 30% SC, 25% ST, 35% DC, 30% MB, 35% FT and 25% \$MTI. LFL Educator is a grandson of the maternal great, BOHI Red Robin donor.

EPDs
CE: 11
BW: 2.4
WW: 66
YW: 101
MK: 18
TM: 50
CM: 5
SC: 0.8
DC: 14
YG: -62
CW: 10
RE: .88
MS: -.03
\$MTI: 54



LOT 28

29 LFL EVAN 7049 E

LIM-FLEX(59/53.4) • Homo Polled (P1) • Homo Black (T)
5/25/2017 • BLAW 7049E • LFM2131277

EBFL YPSILANTI 420Y
LFL BOOMERANG 4050B
DJ XECUTIVE PRIVILEGE
EBFL YPSILANTI 420Y
LFL CHERUB 5026 C
LFL ADINA 3028 A

BW: 76 • Adj. WW: 686 • Adj. YW: 1,190
SC: 37.4 • UFAT: 0.27 • UREA: 12.68 • UIMF: 3.76

OFFERED BY: LAWRENCE FAMILY LIMOUSIN

Ranks in the top 10% WW, 25% YW, 35% TM, 35% CEM, 15% SC, 35% DC, 4% MB and 2% \$MTI. LFL Evan is out of a first-calf heifer who did an outstanding job.

EPDs
CE: 11
BW: 1.8
WW: 72
YW: 104
MK: 18
TM: 54
CM: 7
SC: 1.1
DC: 14
YG: -38
CW: 1
RE: .46
MS: .32
\$MTI: 66



LOT 29

30 LFL ENGINEER 7055 E

LIM-FLEX(75/67.3) • Homo Polled (P1) • Homo Black (T)
6/5/2017 • BLAW 7055E • LFM2131279

EBFL YPSILANTI 420Y
LFL BOOMERANG 4050B
DJ XECUTIVE PRIVILEGE
DHVO TREY 133R
LFL Y-NOT 1046 Y
LFL 6032 S

BW: 82 • Adj. WW: 792 • Adj. YW: 1,217
SC: 33.0 • UFAT: 0.17 • UREA: 16.51 • UIMF: 3.64

OFFERED BY: LAWRENCE FAMILY LIMOUSIN

Ranks in the top 25% WW, 35% MB, and 30% \$MTI. LFL Engineer's dam is a flushmate to LFL Candy Corn, the 2014 Supreme Grand Champion heifer at the Houston Junior Livestock Show and Rodeo.

EPDs
CE: 8
BW: 2.7
WW: 68
YW: 94
MK: 14
TM: 48
CM: 4
SC: 0.5
DC: 14
YG: -53
CW: 2
RE: .66
MS: -.09
\$MTI: 51



LOT 30



HERD SIRE

31 SSTO ELDORADO 744E ET

LIM-FLEX(46/42.1) • Homo Polled (T) • Homo Black (T)
5/1/2017 • SSTO 744E • LFM2139645

- S A V HARVESTOR 0338
- SSTO BEST BET 456B ET**
- ELCX TWILIGHT 114X
- MAGS YELLOW PAPER
- MAGS BRIX**
- MAGS ZRIX

BW: 71 • Adj. WW: 554

EPDs	
CE:	14
BW:	0.5
WW:	66
YW:	103
MK:	18
TM:	51
CM:	8
SC:	0.9
DC:	11
YG:	-.08
CW:	31
RE:	.25
MS:	.31
\$MTI:	62

OFFERED BY: STOWERS LIMOUSIN

Sired by SSTO Best Bet! He is the SAV Harvester son from the once purebred national champion female, ELCX Twilight, and just happens to be one of the hottest sires in the breed. SSTO El Dorado ranks in the top 5% for MB, top 10% for \$MTI and CW, and top 15% for. He is double homozygous and a 46% Lim-Flex.



HERD SIRE

32 SSTO EARN IT 7928E

LIM-FLEX(54/49) • Homo Polled (P2) • Homo Black (T)
9/10/2017 • SSTO 7928E • LFM2134170

- MAGS WINSTON
- MAGS AVIATOR**
- MAGS XTRA REST
- DHVO DEUCE 132R
- SSTO BET YOU CAN 4861B**
- TF BLACKBIRD 9106

BW: 71 • Adj. WW: 715 • Adj. YW: 1,238
SC: 35.5 • UFAT: 0.30 • UREA: 14.90 • UIMF: 3.23

EPDs	
CE:	12
BW:	-0.2
WW:	70
YW:	104
MK:	18
TM:	52
CM:	5
SC:	0.6
DC:	17
YG:	-.21
CW:	32
RE:	.78
MS:	.08
\$MTI:	56

OFFERED BY: STOWERS LIMOUSIN

Attractively designed, double homozygous son of Aviator who ranks in the top 35% or better for CED, BW, WW, YW, DC, CW, MB and \$MTI.



HERD SIRE

33 SSTO FARGO 8803F

LIM-FLEX(59/53.2) • Het Polled (T) • Homo Black (P2)
1/7/2018 • SSTO 8803F • LFM2142767

- S A V HARVESTOR 0338
- SSTO BEST BET 456B ET**
- ELCX TWILIGHT 114X
- GPFF BLAQUE RULON
- SSTO ROUND ROBIN 3805A**
- BOHI RED ROBIN 282R

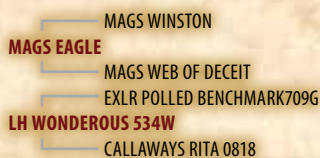
BW: 78 • Adj. WW: 741 • Adj. YW: 1,439

EPDs	
CE:	11
BW:	1.3
WW:	66
YW:	103
MK:	22
TM:	55
CM:	6
SC:	0.9
DC:	9
YG:	-.28
CW:	23
RE:	.64
MS:	.08
\$MTI:	55

OFFERED BY: STOWERS LIMOUSIN

Here is a big, stout, heavy muscled and powerful herd sire from Stowers who is homozygous black, 59% Lim-Flex. He is a son of SSTO Best Bet 456B, one of the breed's hottest sires in the business. His dam was a top lot in the 1.31.19 Stowers sale and is a big-time daughter of GPFF Blaque Rulon from BOHI Red Robin.

34

LH ERNEST 111ELIM-FLEX(50/46.2) • Homo Polled (P1) • Homo Black (P1)
9/5/2017 • LCHA 111E • LFM2141199

BW: 76 • Adj. WW: 742 • Adj. YW: 1,311
 SC: 37.3 • UFAT: 0.42 • UREA: 18.84 • UIMF: 3.17

OFFERED BY: HALL CATTLE CO.

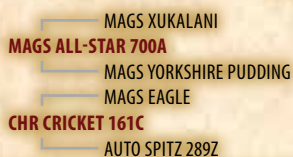
A moderate-framed, thick-made performance son of Eagle with an 18.84 REA and 3.17 IMF.

EPDs	
CE:	12
BW:	1.3
WW:	76
YW:	120
MK:	18
TM:	56
CM:	5
SC:	0.8
DC:	14
YG:	-25
CW:	28
RE:	.89
MS:	.16
\$MTI:	61



LOT 34

35

CHR ELVIS 113ELIM-FLEX(62/54.2) • Homo Polled (P3) • Homo Black (P3)
9/6/2017 • KQ 113E • LFM2141215

BW: 68 • Adj. WW: 752 • Adj. YW: 1,356
 SC: 37.9 • UFAT: 0.37 • UREA: 13.60 • UIMF: 3.66

OFFERED BY: HALL CATTLE CO. / COYOTE HILLS RANCH

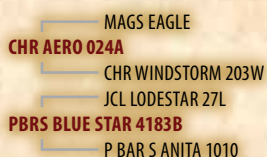
A stout-made performance bull with a pedigree stacked for performance and calving-ease. He ranks in the top 10% for CED, WW, YW, TM, SC and CW.

EPDs	
CE:	15
BW:	0.1
WW:	72
YW:	113
MK:	24
TM:	60
CM:	8
SC:	1.4
DC:	12
YG:	-29
CW:	32
RE:	.77
MS:	.06
\$MTI:	56



LOT 35

36

CHR EPIC NIGHT 170ELIM-FLEX(56/50.7) • Homo Polled (P3) • Homo Black (P3)
11/4/2017 • KQ 170E • LFM2141229

BW: 74 • Adj. WW: 652 • Adj. YW: 1,204
 SC: 35 • UFAT: 0.35 • UREA: 15.74 • UIMF: 4.07

OFFERED BY: COYOTE HILLS RANCH / DIAMOND HILL CATTLE CO.

A very moderate, well-balanced, sound-made Eagle grandson out of a really good Lodestar daughter. Scanned an impressive 15.74 REA and 4.07 IMF at yearling time.

EPDs	
CE:	11
BW:	1.3
WW:	62
YW:	99
MK:	22
TM:	53
CM:	5
SC:	0.5
DC:	13
YG:	-27
CW:	25
RE:	.61
MS:	.04
\$MTI:	52



LOT 36



LOT 37

37

DHIL 7003E ET

LIM-FLEX(37/33.1) • Homo Polled (P3) • Homo Black (P2)
9/9/2017 • BDHC 7003E • LFM2134401

HEAD SIRE

- MAGS APPLESEED
- MAGS CABLE**
- MAGS ZEQUIN
- DAMERON FIRST CLASS
- EXLR REAL PRETTY 003Z**
- BOHI REAL PRETTY 103R

BW: 62 • Adj. WW: 668 • Adj. YW: 1,121
SC: 35.5 • UFAT: 0.52 • UREA: 15.76 • UIMF: 4.67

OFFERED BY: DIAMOND HILL CATTLE CO.

A thick-made, high-quality, double homozygous Cable son who scanned a 15.76 REA and 4.67 IMF at yearling.

EPDs	
CE:	13
BW:	1.5
WW:	66
YW:	98
MK:	22
TM:	56
CM:	7
SC:	1.0
DC:	6
YG:	-.06
CW:	26
RE:	.51
MS:	.43
\$MTI:	66



LOT 38

38

LFL ELLIOT 7029E

LIM-FLEX(56/50.6) • Homo Polled (P3) • Homo Black (P3)
5/4/2017 • TKJP 7029E • LFM2131709

HEAD SIRE

- EBFL YPSILANTI 420Y
- LFL COZMO 5011C ET**
- DJ XECUTIVE PRIVILEGE
- MAGS UNITE TOGETHER
- LFL BAMBIE 4121 B**
- PBR SUGAR BABE 47T

BW: 73 • Adj. WW: 705 • Adj. YW: 1,167
UFAT: 0.36 • UREA: 12.26 • UIMF: 2.84

OFFERED BY: TUCKER PARKINSON

Ranks in the top 10% WW, 15% YW, 30% TM, 25% SC, 15% \$MTI and 15% MB. LFL Elliott's dam, LFL Bambi, is a top producer who also was a Division Champion in Tulsa, Oklahoma, at the 2015 National Junior Heifer Show and Congress for Tucker.

EPDs	
CE:	8
BW:	2.5
WW:	73
YW:	109
MK:	19
TM:	55
CM:	5
SC:	0.9
DC:	12
YG:	-.25
CW:	8
RE:	.48
MS:	.13
\$MTI:	59



LOT 39

39

LFL ET 7046E

LIM-FLEX(56/50.7) • Het Polled (T) • Homo Black (T)
5/25/2017 • TKJP 7046E • LFM2131710

HEAD SIRE

- EBFL YPSILANTI 420Y
- LFL COZMO 5011C ET**
- DJ XECUTIVE PRIVILEGE
- RSKY WIPEOUT 0029
- LFL SWEET CHEEKS 4022 B**
- PCC XOTIC 016 X

BW: 73 • Adj. WW: 737 • Adj. YW: 1,352
UFAT: 0.39 • UREA: 12.98 • UIMF: 2.55

OFFERED BY: TUCKER PARKINSON

Ranks in the top 20% WW, 25% YW, 20% TM, 15% SC, 25% DC, 25% MB, and 25% \$MTI. LFL ET had a 99% ratio with a BW of 76 lbs. and a spread of 107% Ratio on YW to 1,352 lbs.

EPDs	
CE:	9
BW:	2.1
WW:	69
YW:	104
MK:	22
TM:	57
CM:	5
SC:	1.1
DC:	15
YG:	-.22
CW:	9
RE:	.37
MS:	.04
\$MTI:	54

40

WLR EVIDENCE ETPERCENTAGE(81/74.2) • Homo Polled (T) • Het Black (T)
5/11/2017 • BJLR 62E • NXM2135062

MAGS SASQUATCH
MAGSWL USUAL SUSPECT 538U
 MAGS PHANTOMS PRIZE
 MAGS XYLOID
ELCX CHRISTY 260Z
 AUTO CHRISTY 8889R

BW: 72 • Adj. WW: 732 • Adj. YW: 1,143

OFFERED BY: WIES LIMOUSIN RANCH

2018 NAILE MOE Division Champion Bull. He's an 81% Limousin who is homozygous polled. Here is a big-time herd-sire prospect from the heart of one of the breed's most successful show programs and longest running herds in the U.S. He is sired by the triple-crown winning sire MAGSWL Usual Suspect 538U. From the many-time show champion female for Wies and the ELCX program and now leading donor, ELCX Christy 260Z.

EPDs
CE: 9
BW: 2.0
WW: 57
YW: 89
MK: 22
TM: 51
CM: 6
SC: 0.4
DC: 10
YG: -.5
CW: 15
RE: .79
MS: -.22
\$MTI: 43



41

HAHK EVEREST B54EPERCENTAGE(84/75.7) • Homo Polled (P3) • Homo Black (P3)
2/25/2017 • HAHK B54E • NXM2124489

MAGS THE GENERAL
MAGS YIP
 AUTO CARMINDA 656S
 MAGS YINGI
HAHK BLAST 054B
 HAHK WINDCHIMES 054W

BW: 66 • Adj. WW: 842 • Adj. YW: 1,367

OFFERED BY: HAYHOOK CATTLE CO.

Check this high percentage Limousin bull who is double homozygous. He is stout and sure to add pounds to your calves. Smooth, well-muscled, and balanced. Gentle and easy to handle. Current weight is 1,900 pounds. This bull has that Limousin look and muscle, and is ready to go to work.

EPDs
CE: 12
BW: 1.0
WW: 63
YW: 99
MK: 21
TM: 52
CM: 6
SC: .6
DC: 12
YG: -.43
CW: 26
RE: .65
MS: -.07
\$MTI: 50



42

HAHK ENTERTAINER 127ELIM-FLEX(75/66.2) • Homo Polled (T) • Homo Black (T)
6/3/2017 • HAHK 127E • LFM2135010

CLLL HAHK THE APPRENTICE
HAHK APPLE JACK 036A
 HAHK UNDER THE BOARDWALK
 MAGS WILLPOWER
STSF YOKO 127Y
 AUTO KATHLEEN 875S

BW: 70 • Adj. WW: 911 • Adj. YW: 1,296

OFFERED BY: HAYHOOK CATTLE CO.

Double Homozygous bull whose pedigree includes the 2009 Medal of Excellence Bull, The Apprentice. 127E is a young bull with growth yet to come. He is well-muscled, big-framed, smooth, easy to handle, and will add growth to your calves. Check the moderate birth weight and solid EPDs.

EPDs
CE: 12
BW: 0.2
WW: 62
YW: 95
MK: 22
TM: 52
CM: 6
SC: 0.6
DC: 9
YG: -.48
CW: 18
RE: .74
MS: -.18
\$MTI: 46





HEAD SIRE

43 HAHK EASY PROFIT 004E

LIM-FLEX(41/38.1) • Homo Polled (P3) • DBL Black
7/11/2017 • HAHK 004E • LFM2135019

TMCK BALANCER 173U
MAGS CABIN CREEK ET
MAGS THEATRICAL
MAGS SCOTLAND
HAHK WELL MAID 004W
FLLR TIGER LILY

BW: 70 • Adj. WW: 745 • Adj. YW: 1,158

OFFERED BY: HAYHOOK CATTLE CO.

Take a good look at the pedigree of this double homozygous young bull—it includes some of the best animals in the breed. 004E has growth yet to come. He has good muscle, good frame. He is smooth, he is easy to handle, and he will add value to your calves.

EPDs
CE: 12
BW: 0.1
WW: 61
YW: 94
MK: 19
TM: 49
CM: 7
SC: 0.8
DC: 11
YG: -10
CW: 26
RE: .41
MS: .36
\$MTI: 62



HEAD SIRE

44 HAHK EVERLAST 300E

LIM-FLEX(65/58.6) • Homo Polled (P1) • Homo Black (P1)
7/18/2017 • HAHK 300E • LFM2135022

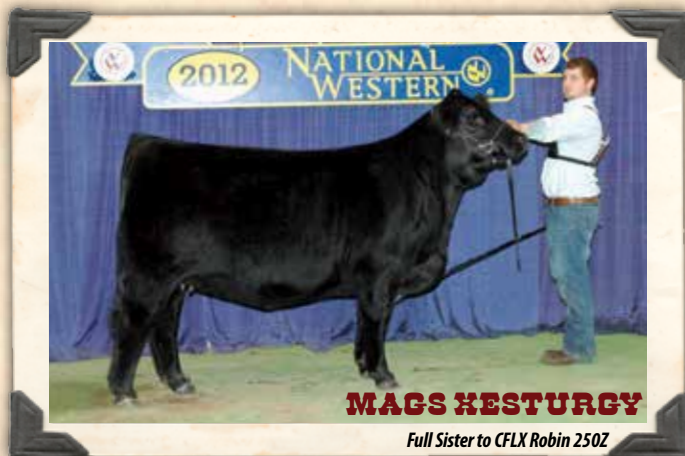
S A V NET WORTH 4200
KURB ARGOSY 3802A
MINE HIP HOP BABY 8016U
LESF ASPHALT 9N
RGJJ300A
EXLR LUVLY 279W

BW: 70 • Adj. WW: 825 • Adj. YW: 1,271

OFFERED BY: HAYHOOK CATTLE CO.

Homozygous Polled and homozygous black. Take a good look at this stylish, balanced, smooth young bull with the right EPDs, with the right attitude, with the right pedigree, and with an exceptional depth of rib. He is the total package and will improve your calf crop to improve your bottom line.

EPDs
CE: 12
BW: 0.4
WW: 63
YW: 100
MK: 22
TM: 54
CM: 7
SC: 0.7
DC: 4
YG: -35
CW: 21
RE: .70
MS: -.01
\$MTI: 52



MAGS XESTURGY

Full Sister to CFLX Robin 250Z

EMBRYOS

45 CFLX ROBIN 250Z

LIM-FLEX(75/64.6) • Het Polled (T) • Het Black (T)
4/18/2012 • CFLX 250Z • LFF2021582



EXLR DAKOTA 353G
AUTO BLACK DAKOTA 129J
DFLC JET SET BPC 34Y
CONNEALY LEAD ON
BOHI RED ROBIN 282R
MAGS MANUELA

BW: 65 • Adj. WW: 584

OFFERED BY: DAVIS LIMOUSIN RANCH

Buyer will get a 5 IVF heifer embryos sired by the bull of the buyer's choice.

CFLX Robin 250Z is a black, polled daughter of BOHI Red Robin 282R, the breed's very first-ever Lim-Flex national champion female and now leading donor for the CFLX program. She is sired by the many-time MOE national gold medal sire, AUTO Black Dakota 129J. She is a full sister to the \$42,000-valued female, MAGS Xesturgy 016Z.

EPDs
CE: 8
BW: 2.6
WW: 61
YW: 98
MK: 30
TM: 60
CM: 5
SC: 0.8
DC: 11
YG: -.49
CW: 12
RE: .69
MS: -.14
\$MTI: 48

46

THREE EMBRYOS

LIM-FLEX(71.5/63.2) • DBL Polled • Homo Black



- AUTO CRUZE 132X
- **AUTO REAL DEAL 150B**
- AUTO LUCKIE TOO 423Y
- EXAR DENVER 2002B
- **LFL BARRONESS 4004B**
- ALMA JO DHVO 723R

OFFERED BY: CHACHERE CATTLE CO.

Barroneess was the Division IV champion at the 2015 Fort Worth Stock Show for Logan. She has gone on to make a great cow in production which is what one would expect for an Alma Jo daughter. The sire of this mating is the double homozygous Purebred herd sire for Begert Limousin who has 112 progeny on record at NALF.

EPDs
CE: 10
BW: 2.6
WW: 72
YW: 106
MK: 21
TM: 57
CM: 5
SC: 0.8
DC: 12
YG: -.39
CW: 18
RE: .69
MS: -.07
\$MTI: 52



LFL BARRONESS 4004B
Dam of Lot 46



AUTO REAL DEAL 150B
Sire of Lot 46

47

THREE EMBRYOS

LIM-FLEX(46.5/51.3) • DBL Polled • Homo Black



- S A V HARVESTOR 0338
- **SSTO BEST BET 456B ET**
- ELCX TWILIGHT 114X
- COLBURN PRIMO 5153
- **SEEE ETERNITY ET**
- CARROUSELS PINA COLADA

OFFERED BY: GOLDEN TATE III INVESTMENTS

Dam is well-respected show female on both the state and national level. She was named the Reserve Overall Grand Champion at the 2018 Missouri State Fair and claimed Reserve Division champion titles at both the 2018 Junior National and All American Futurity shows. SEEE Eternity 917E combines the powerful genes of both Primo and Pina Colada. The sire of these elite embryos is the Harvestor son with massive growth, marbling and \$MTI EPDs. The progeny will be Homozygous black, solid numbered and phenotypically ideal.

EPDs
CE: 12
BW: .9
WW: 67
YW: 105
MK: 19
TM: 75
CM: 8
SC: 0.7
DC: 8
YG: -.11
CW: 28
RE: .41
MS: .14
\$MTI: 56



SEEE ETERNITY
Dam of Lot 47



SSTO BEST BET 456B
Sire of Lot 47



2018 LONE STAR SHOOT-OUT WINNERS



2018 Lone Star Shoot-Out Competitors

SHOOT-OUT CHAMPION
LFL Daisy
Owned by: Colton Barton
Sold by: Lawrence Family Limousin



SHOOT-OUT RESERVE CHAMPION
SSTO Endless Hope
Owned by: Jessica Teel
Sold by: Stowers Limousin



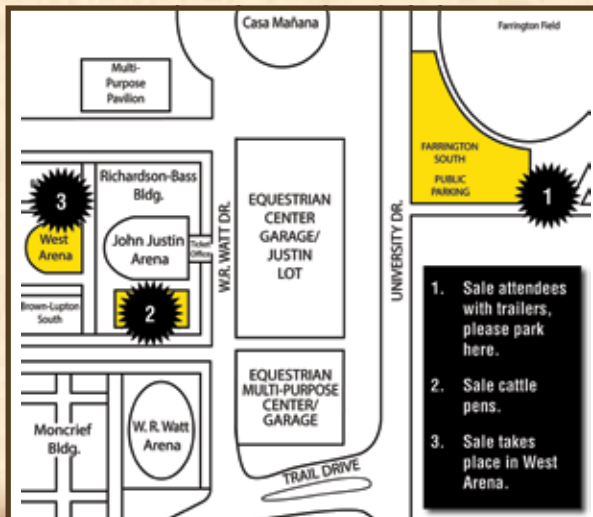
TEXAS LIMOUSIN ASSOCIATION
PO BOX 6097
LUBBOCK, TX 79493

Presorted
Standard
US Postage
PAID
Slate Group

Postal Carrier: Please Do Not Delay DATED MATERIAL

THE COWTOWN CLASSIC

Limousin Sale



Friday, February 1, 2019
Fort Worth, Texas

6 p.m. ~ at the

Fort Worth Stock Show

West Arena of the

Bass-Richardson Building