

Genetics on **ICE** Benefit Auction

MONDAY, JANUARY 14, 2019
6 PM MST • DENVER, COLORADO

TO RAISE FUNDS FOR



Genetics On ICE Benefit Auction



CONTACTS...

If you are unable to attend the auction, contact any of the following to represent you:

C.K. "Sonny" Booth	(918) 533-5587
Ronn Cunningham	(918) 629-9382
Ken Holloway.....	(580) 581-7652
Mark Anderson	(970) 590-9576
Katie Campbell.....	(913) 683-1415
Andy Rest.....	(406) 670-5678
Nathan Smith	(620) 546-4839

Thank You for Your Support!

See you in Denver!

A large part of the excellence achieved at the National Junior Limousin Show and Congress and the All-American Limousin Futurity stems from support of involved Limousin breeders—support from both the heart and the wallet.

This year, the National Junior Limousin Show and Congress and All-American Limousin Futurity in Springfield, Missouri, promises to surpass even the high points of past experiences.

As you can see from the program, this year's benefit auction is filled with genetic opportunities and many other interesting items, thanks to the generosity of the many contributors. You will have the opportunity to choose from:

- some of the most popular and useful sires and dams in the breed today
- preferred position pages in the National Junior Limousin—All-American Limousin Futurity souvenir program to advertise your ranch or program
- award sponsorships
- unique art
- genetic packages
- hunting trips

This "Genetics On Ice" benefit auction gives you the opportunity to help yourself and your program while supporting one of the breed's major events of the year.

The benefit auction, as we know it today, was started in 1984 by American Cattle Services to fund the first All-American Limousin Futurity in the summer of 1985 in Springfield, Missouri, which was the first time the National Junior Heifer Show was held in conjunction with an open Limousin show. This first auction was held at the American Royal in Kansas City, Missouri, with assistance from the Kansas and Missouri Limousin Breeders Associations. Most items offered were frozen semen and pregnant recipients, thus the auction was named "Genetics On Ice" from the very beginning.

The fundraiser was initially one where the donor received 50 percent of the revenue and the AALF received 50 percent. After the second such auction in Kansas City in 1985, Dr. Greg Martin, NALF Executive Vice President, and Ken Holloway, principal partner of American Cattle Services, thought it would be appropriate to hold the benefit auction in Denver at the NALF banquet and split the proceeds between NALJA and AALF. The "Genetics On Ice" auction has enjoyed a 35-year run with much success thanks in no small part to the generosity of those who attended, contributed and purchased.

Totals indicate some \$1.7 million has been raised from Limousin breed promotion at the "Genetics On Ice" auction. A special thanks to all involved!

All items, unless otherwise noted, sell with proceeds split 50-50 between NALJA and the AALF.

All semen and embryos will be released for shipment upon payment, unless otherwise noted.

Shipment will be at the buyer's expense. Semen and embryos are not necessarily exportable outside the United States.

Please make checks payable to:
NORTH AMERICAN LIMOUSIN EDUCATION CORPORATION

EPDs are current as of 12/27/2018.

WITH & FOR THE JUNIORS

CORNERPOST

HERD IN A TANK

LOT

1

NALJA FUNDRAISER

1 LOT
30 EGGS
6 ELITE LIMI DONORS

GENETICS ON ICE

DOUBLETREE 3203 QUEBEC ST DEN, CO 80207

MON JAN 14

DAM / MAGS AMERICAN BEAUTY SIRE / TASF BELIEVE



ATAK

PICK OF THE TANK

MAGNESS

DAM / MAGS YEOMEN SIRE / MAGS CABLE COWBOY



BRATTON

DAM / LLJB ABSOLUTE STYLE SIRE / MAGS ALI



LINHART SW CATTLE
JB RANCH BOUTIN BEEF

DAM / TMCK BREAKING DAWN SIRE / TMCK CASH FLOW



TUBMILL

PICK OF THE TANK

WIES

MISCELLANEOUS

2 GREELEY HAT WORKS

One custom-made cowboy hat.

Proceeds go to the Missouri Limousin Association

DONATED BY: GREELEY HAT WORKS, GREELEY, CO



3 SAND SPRING RESORT 2-NIGHT STAY

at Sand Springs Resort, Lebanon, Missouri

Includes 1-day rafting, canoeing or kayaking trip for 6 people. You'll also receive \$100 credit at the Gravel Bar and Grill (featuring Limousin beef specialty burgers)

DONATED BY: GLENDENNING J BAR J RANCH, LEBANON, MO



4 FISHING TRIP FOR FOUR

at Southern Exposure Inland Fishing Charters
of Buras, Louisiana

2-day trip for 4 people. More people are welcome, just have to pay for additional people. Meals are included.

DONATED BY: LIVE OAK CATTLE CO., INDEPENDENCE, LA & SOUTHERN EXPOSURE



5 GATOR HUNT FOR TWO

at Southern Exposure Inland Fishing Charters
of Buras, Louisiana

3-day trip for 2 people. Gators are only in season in September so trip must be used in September. Each person gets to shoot one alligator each. They can keep the hide and head. If taxidermy work is wanted, that would be an additional cost. Hunter gets to keep the meat

DONATED BY: LIVE OAK CATTLE CO., INDEPENDENCE, LA & SOUTHERN EXPOSURE



MISCELLANEOUS

6 TURKEY HUNT FOR TWO

at Hamm's Sportsman Oasis, Frederick, Oklahoma

Hamm's Sportsman Oasis is nestled in the heart of southwest Oklahoma. With more than 12,000 acres of habitat, Hamm's Sportsman Oasis is truly a haven for the avid sportsman. Hunting package includes a one-day hunt for two hunters, lodging, meals, bird cleaning, dogs and guides.

**DONATED BY: HAMM'S SPORTSMAN OASIS, FREDERICK, OK
580/335-1892, WWW.HAMMSOASIS.COM**



7 CREEP FEEDER

175-bushel, single-axle feeder, 4,100 lb. portable weight limit, 10" long feed box. Pens secure for transportation. Includes delivery to central states at our earliest convenience or will work with buyer further out.

DONATED BY: OKLAHOMA PRIDE PRODUCTS, CHICKASHA, OK



8 CTI LICK TUBS

Want happy cows? Be the last bidder on a ton of CTI Lick Tubs. Your cows with thank you.

Free delivery to IA, MO, KS, NE and OK.

DONATED BY: CTI, LEON, IA



9 SHANA'S COWHIDE CREATION TRAY & STAND

Shana's donations have always been a crowd favorite and she's bringing to town another exceptional piece. This can be a standalone piece of home decor or put it out to use at parties. Bid early and bid often, just make sure you are on the winning side of this cowhide tray.

DONATED BY: SHANA HOLLOWAY, CHATTANOOGA, OK



MISCELLANEOUS

10 KYLEE GASTON'S DESSERT OF THE MONTH CLUB SUBSCRIPTION

This was a highlight in last year's offering as a silent auction item. You'll definitely want to be the named called when the gavel drops for the final time. You'll receive a shipment of homemade desserts every month for a year. Miss Kylee will cater to purchaser's cookie preference; every month is a different recipe.

DONATED BY: GASTON FAMILY, BRIDGEPORT, TX



11 HAND ENGRAVED 2-BLADE HEN & ROOSTER KNIFE

DONATED BY: TITTOR'S BUCKLES & SPURS, PARADISE, TX



12 NALJA AWARDS PROGRAM SPONSORSHIP

Selling sponsorship of the official awards program for the 2019 National Junior Limousin Show & Congress in Springfield, MO.

13 NALJA SHOW-SHIRT SPONSORSHIP

Your firm's logo will be on the left sleeve of the official show-shirt for the 2019 National Junior Limousin Show & Congress in Springfield, MO.

14 RAFFLE TICKETS

Six chances to win the \$1,000 raffle for the Georgia Junior Limousin Association
The drawing will be held Feb. 22, 2019.

DONATED BY: LITTLE D LIMOUSIN, WINDER, GA



15 L365 SALE PROMOTIONAL PACKAGE

Your winning bid will consist of:
2 eBlasts • 1 Featured Ad • 1 Catalog Posting on the Limousin365 website

DONATED BY: LIMOUSIN365



NJLSC/AALF SOUVENIR PROGRAM PREMIUM PAGES

16

SELLING FOUR-COLOR INSIDE FRONT COVER

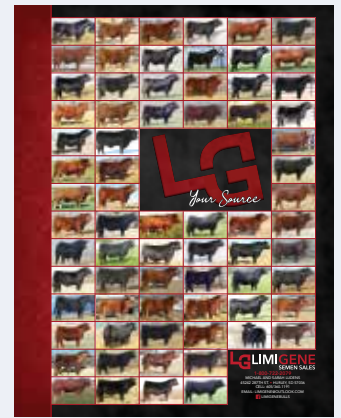
Preferred Position in the National Junior Limousin Show & Congress an All-American Limousin Futurity program



17

SELLING FOUR-COLOR FIRST PAGE

Preferred Position in the National Junior Limousin Show & Congress an All-American Limousin Futurity program



18

SELLING FOUR-COLOR LEFT CENTER SPREAD

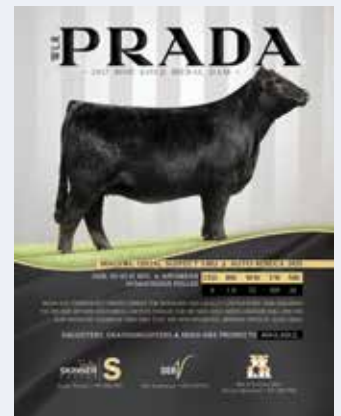
Preferred Position in the National Junior Limousin Show & Congress an All-American Limousin Futurity program



19

SELLING FOUR-COLOR RIGHT CENTER SPREAD

Preferred Position in the National Junior Limousin Show & Congress an All-American Limousin Futurity program



20

SELLING FOUR-COLOR LAST PAGE

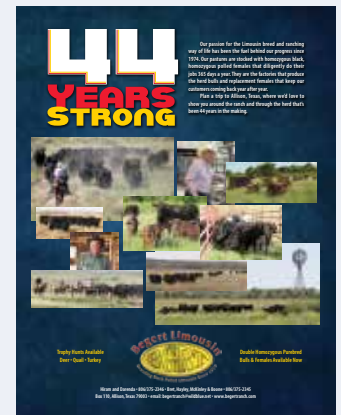
Preferred Position in the National Junior Limousin Show & Congress an All-American Limousin Futurity program



21

SELLING FOUR-COLOR INSIDE BACK COVER

Preferred Position in the National Junior Limousin Show & Congress an All-American Limousin Futurity program



22

SELLING FOUR-COLOR BACK COVER

Preferred Position in the National Junior Limousin Show & Congress an All-American Limousin Futurity program



Thank You
for
Your Support

EMBRYOS



**WULFS
ENVOY**
Sire of Lot 23 embryos



**WULFS
YAM PUDDING**
Dam of Lot 23 embryos

23 ENVOY x YAM PUDDING

Selling 3 Frozen Embryos

LIM-FLEX 75% • RED/BLACK • DBL POLLED

BEIBER HARD DRIVE Y120
WULFS ENVOY K116E
 WULFS YOUR CHOICE 1419Y
 WULFS SIRLOIN 3172S
WULFS YAM PUDDING 1437Y
 WULFS MISSIVE 2258M

EPDs		
CD	12	SC 0.8
BW	-0.3	DC 18
WW	70	YG -.58
YW	108	CW 16
MK	22	RE 1.15
TM	57	MB .13
CM	7	\$MI 61

CONTRIBUTED BY: WULF CATTLE, MN

An exciting mating of the carload lead-off bull and Lot 1 of the 2018 Wulf Opportunity Sale. The dam, Yam Pudding, is a tremendous producer with a beautiful structure and is a full sister to Wulfs Xcellsior X252X.



**MAGS
ANCHOR**
Sire of Lot 24 embryos



**MAGS
SUGAR N SPICE**
Dam of Lot 24 embryos

24 ANCHOR x SUGAR N SPICE

Selling 3 Frozen Embryos

LIM-FLEX 56% • DBL BLACK • HOMO POLLED

LH WAR HERO 105W
MAGS ANCHOR
 MGS XIPHOPAGOUS
 BR MIDLAND
MAGS SUGAR N SPICE
 MAGS MARQUEE

EPDs		
CD	11	SC 1.1
BW	1.8	DC 14
WW	61	YG -.28
YW	89	CW 19
MK	16	RE .62
TM	47	MB .18
CM	7	\$MI 57

CONTRIBUTED BY: THOMAS & SON FARMS, MD

These embryos are from a proven donor who worked well in the Magness program before heading to Maryland and the Thomas & Son donor pen. Sound numbers and style to burn, you won't go wrong on these embryos.



ELCX ELEGANT 722E
Full sib to Lot 25

25 AVIATOR x LISA

Selling 5 Frozen Embryos

LIM-FLEX 42% • HOMO BLACK • HOMO POLLED

MAGS WINSTON
MAGS AVIATOR
 MAGS XTRA REST
 EXAR SUNDANCE 6216
EXLR LISA 8223X
 EXLR LISA 8095T

EPDs		
CD	15	SC 0.5
BW	-0.7	DC 14
WW	59	YG -.17
YW	95	CW 33
MK	18	RE .69
TM	48	MB .33
CM	10	\$MI 61

CONTRIBUTED BY: EDWARD LAND & CATTLE, NC

The dam, EXLR Lisa 8223X, is a proven donor and daughter of EXAR Sundance who goes back to BR Midland and the famed WK Princess 1194 donor. As you can see by Elegant's picture, this mating works and works well!

SIEMEN



26 AUTO CRUZE 132X

Selling 3 Units of Semen

PERCENTAGE(87/77.3) • HOMO BLACK (T) • HOMO POLLED (T) • NXM1979953

AUTO DOLLAR GENERAL 122R
MAGS THE GENERAL
 EXLR LUVLY 821M
 LESF ASPHALT 9N
AUTO REBECA 292S
 EXLR REBECA 1019P

EPDs		
CD	14	SC 0.2
BW	-0.1	DC 11
WW	78	YG -.47
YW	114	CW 20
MK	24	RE .67
TM	63	MB -.24
CM	7	\$MI 49

ACT BW 62 | ADJ WW 722 | ADJ YW 1,117 | ADJ REA 13.90 | ADJ FAT .17 | ADJ IMF 2.62

DONATED BY: PINEGAR LIMOUSIN, MO

The Cruze progeny have been a popular choice of many cattlemen. They are moderate-framed, performance cattle with structural integrity.



27 SSTO BEST BET 456B ET

Selling 10 Units of Semen

LIM-FLEX(43/38.8) • HOMO BLACK (T) • HET POLLED (T) • LFM2077532

S A V HERITAGE 6295
S A V HARVESTOR 0338
 S A V EMBLYNETTE 7749
 DHVO DEUCE 132R
ELCX TWILIGHT 114X
 DFCL HBHPC 1S

EPDs		
CD	13	SC 1.0
BW	1.4	DC 9
WW	76	YG -.01
YW	120	CW 39
MK	20	RE .35
TM	58	MB .27
CM	7	\$MI 63

ACT BW 81 | ADJ WW 798 | ADJ YW 1,370 | ADJ REA 18.70 | ADJ FAT .37 | ADJ IMF 4.30

DONATED BY: LINHART LIMOUSIN, IA / STOWER LAND & CATTLE, TX

Best Bet is your best bet for a uniform set of calves. He totes an impressive BW to YW spread and passes that along to his offspring.



28 MAGS CABLE

Selling 10 Units of Semen

LIM-FLEX(50/44.4) • HOMO BLACK (P1) • HOMO POLLED (P2) • LFM2075708

RITO 6EM3 OF 4L1 EMBLAZON
MAGS APPLESEED
 MAGS WAY TO SHINE
 BOHI TOP DOLLAR 7144T
MAGS ZEQUIN
 WERNER RITA 118

EPDs		
CD	15	SC 1.4
BW	1.0	DC 14
WW	75	YG -.20
YW	113	CW 45
MK	16	RE .88
TM	53	MB .29
CM	8	\$MI 65

ACT BW 88 | ADJ WW 875 | ADJ YW 1,413 | ADJ REA 13.47 | ADJ FAT .42 | ADJ IMF 4.00

DONATED BY: MAGNESS LAND & CATTLE, CO

Lead bull in the 2017 Magness Grand Champion Carload. He stamps his offspring with his stunning look and muscle.



29 MAGS WINSTON

Selling 5 Units of Semen

LIM-FLEX(50/45.2) • HET BLACK (T) • HOMO POLLED (T) • LFM1927995

C A FUTURE DIRECTION 5321
BT CROSSOVER 758N
 BT ROYAL PRIDE 237G
 EXLR NEW GENERATION 071M
MAGS STRAWBERRY
 MAGS FRUITFUL 487M

EPDs		
CD	14	SC -0.2
BW	-0.7	DC 16
WW	65	YG -.18
YW	110	CW 50
MK	25	RE .68
TM	58	MB .40
CM	6	\$MI 66

ACT BW 74 | ADJ WW 863 | ADJ YW 1,442 | ADJ REA 13.80 | ADJ FAT .59 | ADJ IMF 5.00

DONATED BY: BECKMAN LIVESTOCK, ID

The sire who's tried and true. Cattlemen love his calves—muscle, style and overall balance.

SIEMEN



30 HUNT CREDENTIALS 37C ET

Selling 10 Units of Semen

PUREBRED(100/89.6) • RED • HOMO POLLED (T) • NPM2074458

HUNT ROSS 42R
HUNT TESTAMENT 40T
 HUNT RUTH 07R
 WULFS SIGNATURE 9302S
JKTW WHISKEY RIVER 985 W
 JKTW RADDISON 6602R

EPDs		
CD	14	SC 1.2
BW	0.7	DC 17
WW	79	YG -.52
YW	125	CW 61
MK	18	RE 1.11
TM	58	MB .15
CM	8	\$MI 64

ACT BW	95	ADJ WW	720	ADJ YW		ADJ REA		ADJ FAT		ADJ IMF	
--------	----	--------	-----	--------	--	---------	--	---------	--	---------	--

DONATED BY: WULF CATTLE, MN / HUNT LIMOUSIN RANCH, NE

The purebred bull who excels in CD, BW, WW, YW, TM, SC, DC, CW, RE, MB and \$MI.



31 LFLC DENVER 857D

Selling 10 Units of Semen

PUREBRED(100/89) • HOMO BLACK (T) • HOMO POLLED (T) • NPM2110530

WULFS XTRACTOR X233X
WULF'S ZIPLOCK N922Z
 PLND WINDMILL 922W
 RUNL WALKING TALL 252W
LFLC ANNABELLE 857A
 LFLC DAKOTA BELLE 602U

EPDs		
CD	10	SC 1.4
BW	1.9	DC 16
WW	76	YG -.74
YW	118	CW 16
MK	16	RE 1.07
TM	54	MB -.32
CM	5	\$MI 48

ACT BW	78	ADJ WW	778	ADJ YW	1,385	ADJ REA	17.16	ADJ FAT	.15	ADJ IMF	3.98
--------	----	--------	-----	--------	-------	---------	-------	---------	-----	---------	------

DONATED BY: GV LIMOUSIN, KS / HANSON, KS / LUDENS FAMILY LIMOUSIN, SD

An exciting purebred bull with balanced numbers, muscle and eye appeal. Exportable semen available.



32 CJSJ CREED 5042C

Selling 10 Units of Semen

LIM-FLEX(53/47.5) • HOMO BLACK (P3) • HOMO POLLED (T) • LFM2081209

MAGS WINSTON
MAGS AVIATOR
 MAGS XTRA REST
 MAGS XUKALANI
CJSJ 2090Z
 MAGS XULEMA

EPDs		
CD	18	SC 0.5
BW	-0.4	DC 14
WW	65	YG -.22
YW	101	CW 11
MK	22	RE .61
TM	54	MB .34
CM	10	\$MI 64

ACT BW	76	ADJ WW	804	ADJ YW	1,374	ADJ REA	15.66	ADJ FAT	.52	ADJ IMF	4.13
--------	----	--------	-----	--------	-------	---------	-------	---------	-----	---------	------

DONATED BY: LINHART LIMOUSIN, IA / GRAVEN LAND & CATTLE, MO / TUBMILL CREEK FARMS, PA

A high-growth, calving-ease bull with performance, depth of rib and structural integrity.



33 MAGS ZODIAC

Selling 10 Units of Semen

LIM-FLEX(62/56.1) • HOMO BLACK (T) • HOMO POLLED (P1) • LFM2006060

BT CROSSOVER 758N
MAGS WINSTON
 MAGS STRAWBERRY
 DHVO DEUCE 132R
MAGS XANTHOUS
 BOHI RHONDA 314R

EPDs		
CD	11	SC 0.5
BW	2.2	DC 16
WW	80	YG -.25
YW	141	CW 62
MK	27	RE .84
TM	67	MB -.11
CM	4	\$MI 53

ACT BW	61	ADJ WW	862	ADJ YW	1,499	ADJ REA	13.98	ADJ FAT	.37	ADJ IMF	3.93
--------	----	--------	-----	--------	-------	---------	-------	---------	-----	---------	------

DONATED BY: MAGNESS LAND & CATTLE, CO / BUCK RIDGE CATTLE CO., MO / WINVIEW FARMS, TN

The top-selling bull in the 2013 Magness bull sale. He sires the right kind—numbers and look.

SIEMEN



34 SYES BEST BUY 316B

Selling 10 Units of Semen

PUREBRED(93/90) • HET BLACK (T) • HOMO POLLED (T) • NPM2051623

WZRK PRIMESTAR 861P
WULFS XCLUSIVE 2458X
 WULFS MISSIVE 2258M
 OKLF LINEBACKER 341L
MISS SYES LINEBACKER 317S
 MISS SYES R JUST 318P

EPDs			
CD	10	SC	-0.3
BW	3.7	DC	13
WW	83	YG	-81
YW	122	CW	25
MK	4	RE	1.35
TM	46	MB	-.10
CM	3	\$MI	58

ACT BW	86	ADJ WW	828	ADJ YW	1,244	ADJ REA	16.44	ADJ FAT	.30	ADJ IMF	3.32
--------	----	--------	-----	--------	-------	---------	-------	---------	-----	---------	------

DONATED BY: LEWIS LIMOUSIN FARMS, CO

A highly regarded purebred bull with strong a strong EPD profile. Semen is in short supply.



35 CELL ENVISION 7023E

Selling 10 Units of Semen

PUREBRED(87/75.7) • HOMO BLACK (T) • HOMO POLLED (T) • NPM2127167

AHCC WESTWIND W544
AHCC BARN BURNER B907
 LVLS 9066U
 TW FIRE N' ICE
PBRS ZSA ZSA 246Z
 PBRS ULL 854U

EPDs			
CD	8	SC	1.3
BW	2.8	DC	14
WW	80	YG	-51
YW	135	CW	45
MK	23	RE	1.24
TM	63	MB	-.32
CM	4	\$MI	47

ACT BW	84	ADJ WW	618	ADJ YW	1,375	ADJ REA	20.22	ADJ FAT	.26	ADJ IMF	3.02
--------	----	--------	-----	--------	-------	---------	-------	---------	-----	---------	------

DONATED BY: VORTHMANN LIMOUSIN, IA / LINHART LIMOUSIN, IA

This purebred bull topped the 2018 Linhart bull sale because of his powerful muscle, growth and soundness.



36 MAGS AVIATOR

Selling 10 Units of Semen

LIM-FLEX(59/53.3) • HOMO BLACK (T) • HOMO POLLED (P1) • LFM2028667

BT CROSSOVER 758N
MAGS WINSTON
 MAGS STRAWBERRY
 DHVO DEUCE 132R
MAGS XTRA REST
 MAGS UNREST

EPDs			
CD	16	SC	0.0
BW	-0.8	DC	19
WW	63	YG	-.19
YW	97	CW	28
MK	16	RE	.70
TM	47	MB	.20
CM	9	\$MI	58

ACT BW	85	ADJ WW	745	ADJ YW	1,244	ADJ REA	12.34	ADJ FAT	.57	ADJ IMF	5.33
--------	----	--------	-----	--------	-------	---------	-------	---------	-----	---------	------

DONATED BY: LINHART LIMOUSIN, IA / WILDER FAMILY LIMOUSIN, TX

Widely used and for all the right reasons. His offspring are popular and good!



37 WULFS XCLUSIVE 2458X

Selling 10 Units of Semen

PUREBRED(100/88.2) • HET BLACK (T) • HOMO POLLED (T) • NPM1967755

JCL LODESTAR 27L
WZRK PRIMESTAR 861P
 WZRK MISS P ULTRA 861F
 LVLS POLLED BLACK JACK
WULFS MISSIVE 2258M
 WULFS FAITH 6501F

EPDs			
CD	13	SC	0.3
BW	3.1	DC	11
WW	76	YG	-.65
YW	118	CW	25
MK	6	RE	1.01
TM	43	MB	-.12
CM	7	\$MI	54

ACT BW	99	ADJ WW	810	ADJ YW	1,316	ADJ REA	13.98	ADJ FAT	.33	ADJ IMF	3.28
--------	----	--------	-----	--------	-------	---------	-------	---------	-----	---------	------

DONATED BY: SYMENS BROTHERS, SD / WULF CATTLE, MN

The purebred bull with a proven track record.

SIEMEN



38 COLE DEPUTY 37D

Selling 10 Units of Semen

LIM-FLEX(56/49.4) • HOMO BLACK (P1) • HOMO POLLED (P2) • LFM2103753

MAGS WINSTON
MAGS ZODIAC
 MAGS XANTHOUS
 COLEMAN PRODUCTION 608
COLE MISS PRODUCTION 874U
 COLE 4142P

EPDs		
CD	12	SC 0.3
BW	2.0	DC 17
WW	84	YG -.18
YW	141	CW 58
MK	15	RE .89
TM	57	MB .21
CM	5	\$MI 65

ACT BW	86	ADJ WW	908	ADJ YW	1,566	ADJ REA	17.82	ADJ FAT	.49	ADJ IMF	4.95
--------	----	--------	-----	--------	-------	---------	-------	---------	-----	---------	------

DONATED BY: BREHM FARMS, TX

Top-selling bull in a past Coleman Bull Sale. He has an impressive EPD profile.



39 AHCC COWBOY KIND C595 ET

Selling 10 Units of Semen

LIM-FLEX(50/44.9) • RED • HOMO POLLED (T) • LFM2087905

BECKTON EPIC R397 K
LSF SAGA 1040Y
 LSF MINOLA T7172 W9041
 AUTO BLACK DAKOTA 129J
AHCC DAKOTA LUVLY R595
 EXLR 794H

EPDs		
CD	5	SC 1.5
BW	3.7	DC 6
WW	84	YG -.29
YW	134	CW 31
MK	26	RE .64
TM	68	MB -.19
CM	5	\$MI 51

ACT BW	89	ADJ WW	860	ADJ YW	1,562	ADJ REA		ADJ FAT		ADJ IMF	
--------	----	--------	-----	--------	-------	---------	--	---------	--	---------	--

DONATED BY: LINHART LIMOUSIN, IA / HAGER CATTLE CO., ND

He topped the 2016 Hager Bull Sale. Take note of this powerful muscle, homozygous polled, performance bull.



40 RLBH AIR FORCE ONE

Selling 10 Units of Semen

LIM-FLEX(62/55.7) • HOMO BLACK (T) • HET POLLED (T) • LFM2026301

D A TRAVELER 004 703
EF XCESSIVE FORCE
 CFLX MOLLYS IMAGE
 EXLR NEW GENERATION 071M
EF YAFFA 821Y
 MAGS ROSE PETAL

EPDs		
CD	10	SC 0.9
BW	-1.2	DC 18
WW	53	YG -.13
YW	82	CW 33
MK	13	RE .50
TM	40	MB .31
CM	8	\$MI 59

ACT BW	83	ADJ WW	865	ADJ YW	1,361	ADJ REA	14.78	ADJ FAT	.55	ADJ IMF	3.90
--------	----	--------	-----	--------	-------	---------	-------	---------	-----	---------	------

DONATED BY: COUNSIL FAMILY LIMOUSIN, TX

This many-time champion is siring many champions. Here's a rare opportunity to obtain Air Force One semen.



41 TASF CROWN ROYAL 960C ET

Selling 10 Units of Semen

PUREBRED(100/88.1) • HOMO BLACK (P1) • HOMO POLLED (T) • NPM2086481

GPFF BLAQUE RULON
DHVO DEUCE 132R
 AMY JO DHAN 20L
 EXLR NASDAQ 380R
TASF WHISKEY LULLABY 357W
 TMCK MISS THICK 37T

EPDs		
CD	5	SC 1.1
BW	3.8	DC 8
WW	75	YG -.71
YW	111	CW 12
MK	23	RE 1.20
TM	60	MB -.57
CM	2	\$MI 38

ACT BW	94	ADJ WW	821	ADJ YW	1,332	ADJ REA	14.49	ADJ FAT	.22	ADJ IMF	2.52
--------	----	--------	-----	--------	-------	---------	-------	---------	-----	---------	------

DONATED BY: JCL LAND & CATTLE, OK / THOMAS & SON FARMS, MD

The 2017 National Western Grand Champion Bull who is siring champions.



42 HUBB BULLETPROOF

Selling 10 Units of Semen

LIM-FLEX(43/38.7) • HOMO BLACK (P2) • HET POLLED (T) • LFM2071825

D A TRAVELER 004 703
EF XCESSIVE FORCE
 CFLX MOLLYS IMAGE
 MAGS XUKALANI
MAGS ZALIA
 MAGS RUNNING ON EMPTY

EPDs		
CD	15	SC 1.4
BW	-1.0	DC 11
WW	67	YG -.17
YW	103	CW 30
MK	11	RE .68
TM	44	MB .08
CM	10	\$MI 55

ACT BW 82 ADJ WW 805 ADJ YW 1,374 ADJ REA 18.20 ADJ FAT .35 ADJ IMF 3.25

DONATED BY: JCL LAND & CATTLE, OK / LAWRENCE FAMILY LIMOUSIN, TX

He was the 2016 National Western Grand Champion Bull. His progeny are moderate and packed with muscle and appeal.



43 AHCC EARNING POWER 900E ET

Selling 10 Units of Semen

PERCENTAGE(81/67.9) • HOMO BLACK (T) • HOMO POLLED (T) • NXM2133060

LH WAR HERO 195W
MAGS ANCHOR
 MGS XIPHOPAGOUS
 LVLS FARMER JOHN 7428P
LVLS 9066U
 LVLS9066R

EPDs		
CD	9	SC 1.2
BW	1.2	DC 17
WW	70	YG -.43
YW	110	CW 32
MK	15	RE .83
TM	50	MB .04
CM	5	\$MI 56

ACT BW 87 ADJ WW 921 ADJ YW 1,260 ADJ REA 13.02 ADJ FAT .36 ADJ IMF 3.53

DONATED BY: MAGNESS LAND & CATTLE, CO / HAGER CATTLE CO., ND

The highly popular 81% Anchor son with soundness and eye appeal.



44 MAGS EAGLE

Selling 10 Units of Semen

LIM-FLEX(50/45.1) • HOMO BLACK (T) • HOMO POLLED (T) • LFM1985442

BT CROSSOVER 758N
MAGS WINSTON
 MAGS STRAWBERRY
 AUTO DOLLAR GENERAL 122R
MAGS WEB OF DECEIT
 CABIN CREEK BEHAVE 6040

EPDs		
CD	12	SC 1.1
BW	1.5	DC 15
WW	85	YG -.04
YW	137	CW 55
MK	20	RE 0.6
TM	62	MB .25
CM	5	\$MI 65

ACT BW 86 ADJ WW 929 ADJ YW 1,342 ADJ REA 14.18 ADJ FAT .44 ADJ IMF 5.57

DONATED BY: HALL CATTLE CO., TX / MAGNESS LAND & CATTLE, CO

The Lim-Flex bull with muscling, marbling, calving-ease and maternal. Take note of his BW to YW spread.



45 LFL DIVIDEND 6084D ET

Selling 10 Units of Semen

LIM-FLEX(67/60.1) • HOMO BLACK (P2) • HOMO POLLED (T) • LFM2119189

MAGS WINSTON
MAGS AVIATOR
 MAGS XTRA REST
 DHVO DEUCE 132R
DJ XECUTIVE PRIVILEGE
 DJ UPTOWN GIRL

EPDs		
CD	12	SC 0.6
BW	2.1	DC 20
WW	76	YG -.34
YW	119	CW 15
MK	21	RE .73
TM	59	MB -.02
CM	7	\$MI 55

ACT BW 77 ADJ WW 747 ADJ YW 1,491 ADJ REA 14.34 ADJ FAT .35 ADJ IMF 2.63

DONATED BY: LAWRENCE FAMILY, TX / HALL CATTLE, TX / DIAMOND HILL, OK

The lead bull in the Lawrence Family Limousin 2018 NWSS Grand Champion Pen of Three Lim-Flex Bulls.

SIEMEN



46 DHIL COLT 5793C

Selling 10 Units of Semen

LIM-FLEX(50/43.8) • HOMO BLACK (T) • HOMO POLLED (P2) • LFM2092261

S A V BRILLIANCE 8077
PVF INSIGHT 0129
 PVF MISSIE 790
 DHVO DEUCE 132R
PBRS TOUCH ME GENTLY 798T
 CARROUSELS PINA COLADA

EPDs			
CD	13	SC	1.0
BW	0.5	DC	11
WW	65	YG	-.41
YW	102	CW	42
MK	24	RE	1.28
TM	56	MB	-.19
CM	7	\$MI	46

ACT BW 90 ADJ WW 772 ADJ YW 1,323 ADJ REA 17.11 ADJ FAT .28 ADJ IMF 3.24

DONATED BY: HALL CATTLE CO., TX / DIAMOND HILL CATTLE CO., OK

Top bull in the 2017 Hall-CHR sale and a maternal brother to LH Belle. See a full sister and daughter in the Lawrence stalls.



47 MAGS ALI

Selling 10 Units of Semen

LIM-FLEX(37/32.8) • HOMO BLACK (T) • HOMO POLLED (P2) • LFM2028655

CONNEALY CONSENSUS
CONNEALY CONSENSUS 7229
 BLUE LILLY OF CONANGA 16
 DHVO DEUCE 132R
MAGS YOKO
 EXLR LADY 5112N

EPDs			
CD	9	SC	2.6
BW	3.5	DC	16
WW	92	YG	-.04
YW	142	CW	40
MK	13	RE	.35
TM	59	MB	.24
CM	2	\$MI	67

ACT BW 100 ADJ WW 1026 ADJ YW 1,493 ADJ REA 13.34 ADJ FAT .44 ADJ IMF 5.42

DONATED BY: MAGNESS LAND & CATTLE, CO

The performance bull with growth, muscle and marbling.



48 LH ADVANTAGE 105A

Selling 10 Units of Semen

LIM-FLEX(43/39.5) • HET BLACK (T) • HOMO POLLED (P1) • LFM2048276

SITZ UPWARD 307R
EXAR UPSHOT 0562B
 EXAR BARBARA T020
 EXLR NEW GENERATION 071M
EXLR DUCHESS 7129R
 EXLR 199H

EPDs			
CD	13	SC	0.9
BW	0.8	DC	11
WW	68	YG	-.19
YW	111	CW	50
MK	22	RE	.73
TM	56	MB	.19
CM	8	\$MI	59

ACT BW 82 ADJ WW 816 ADJ YW 1,563 ADJ REA 19.20 ADJ FAT .25 ADJ IMF 3.85

DONATED BY: DIAMOND HILL CATTLE CO., OK / HALL CATTLE CO., TX

Sire of the 2017 NWSS Reserve Grand Champion Pen of Three Lim-Flex Bulls for Lawrence Family Limousin.



49 COLE CADILLAC 05C

Selling 10 Units of Semen

PUREBRED(87/75.9) • BLACK • HOMO POLLED (T) • NPM2082145

WULFS RANSOM 3059R
ROMN TUFF ENUFF 103T
 ROMN ROBERTA 35R
 MRL X-RATED 014X
COLE MISS XRATED 354A
 COLE MISS PRODUCTION 874U

EPDs			
CD	18	SC	0.4
BW	-2.3	DC	9
WW	60	YG	-.59
YW	87	CW	17
MK	26	RE	1.04
TM	56	MB	-.22
CM	12	\$MI	45

ACT BW 66 ADJ WW 835 ADJ YW 1,337 ADJ REA 14.9 ADJ FAT .28 ADJ IMF 2.81

DONATED BY: COLEMAN LIMOUSIN RANCH, MT / H&T BIES CATTLE, SD

A calving-ease bull with strong maternal EPDs.

SIEMEN



50 LFL DELUXE EDITION 6029D ET

Selling 10 Units of Semen

LIM-FLEX(65/58.5) • HOMO BLACK (P2) • HET POLLED (T) • LFM2105800

EF XCESSIVE FORCE
RLBH AIR FORCE ONE
 EF YAFFA 821Y
 DHVO TREY 133R
LFL ZHA ZHA 2075Z
 SENNETT BLACKCAP 517RLF37

EPDs		
CD	10	SC 0.8
BW	-0.5	DC .14
WW	48	YG -.18
YW	70	CW .15
MK	18	RE .35
TM	42	MB .14
CM	6	\$MI 51

ACT BW	70	ADJ WW	821	ADJ YW	1,337	ADJ REA	14	ADJ FAT	.48	ADJ IMF	2.71
--------	----	--------	-----	--------	-------	---------	----	---------	-----	---------	------

DONATED BY: LAWRENCE FAMILY LIMOUSIN, TX

The reserve grand champion bull at the 2018 NWSS and 2017 AALF. See a daughter in the Lawrence stalls—Wow!



51 CHR EIGHT BALL 011E ET

Selling 10 Units of Semen

LIM-FLEX(50/43.8) • HOMO BLACK (T) • HOMO POLLED (P1) • LFM2130967

HA OUTSIDE 3008
HA COWBOY UP 5405
 HA BLACKCAP LADY 1602
 DHVO DEUCE 132R
PBR TOUCH ME GENTLY 798T
 CARROUSELS PINA COLADA

EPDs		
CD	13	SC 1.0
BW	0.5	DC 11
WW	67	YG -.22
YW	105	CW 47
MK	16	RE .92
TM	50	MB -.08
CM	6	\$MI 49

ACT BW	76	ADJ WW	780	ADJ YW	1,401	ADJ REA	14.38	ADJ FAT	.41	ADJ IMF	4.53
--------	----	--------	-----	--------	-------	---------	-------	---------	-----	---------	------

DONATED BY: COYOTE HILLS RANCH, OK / DAVID PHILLIPS, OK

Top-selling bull in the 2018 Hall-CHR sale and a maternal brother to LH Belle.



52 JCL LODESTAR 27L

Selling 10 Units of Semen

PUREBRED(100/90.7) • HOMO BLACK (T) • HOMO POLLED (T) • NPM1623559

WADDLES COBALT 3106
HUNTS HI-LITER 245G
 TNUH MISS C245
 COLE FIRST DOWN 46D
LOGAN'S CHEERLEADER 280G
 TTCC CONFIDENCE MAKER

EPDs		
CD	15	SC 0.7
BW	-0.1	DC 10
WW	71	YG -.44
YW	120	CW 30
MK	20	RE .78
TM	55	MB -.14
CM	8	\$MI 50

ACT BW	79	ADJ WW	814	ADJ YW	1,508	ADJ REA		ADJ FAT		ADJ IMF	
--------	----	--------	-----	--------	-------	---------	--	---------	--	---------	--

DONATED BY: MAGNESS LAND & CATTLE, CO / COYOTE HILLS RANCH, OK

The original double homozygous purebred bull with curve-bending numbers. A true breed changer.



53 LH RODEMASTER 338R

Selling 10 Units of Semen

LIM-FLEX(50/45.4) • HOMO BLACK (T) • HOMO POLLED (T) • LFM1832688

HUNTS HI-LITER 245G
JCL LODESTAR 27L
 LOGAN'S CHEERLEADER 280G
 VERMILION 31 STACLER 3491
VERMILION E BLACKBIRD9546
 CH ENV BLACKBIRD C5941

EPDs		
CD	13	SC 0.8
BW	1.8	DC 12
WW	77	YG -.63
YW	120	CW 21
MK	23	RE .99
TM	62	MB -.21
CM	7	\$MI 51

ACT BW	74	ADJ WW	686	ADJ YW	1,268	ADJ REA	15.10	ADJ FAT	.45	ADJ IMF	3.59
--------	----	--------	-----	--------	-------	---------	-------	---------	-----	---------	------

DONATED BY: MAGNESS LAND & CATTLE, CO / HALL CATTLE CO., TX

The tried-and-proven Lim-Flex sire who adds growth and maternal.

SIEMIEN



54 DHVO DEUCE 132R

Selling 10 Units of Semen

PUREBRED(100/89.2) • HOMO BLACK (T) • DBL POLLED • NPM1797878

BLACK DIAMOND
 GPFF BLAQUE RULON
 QUAIL RUN RAMONA BP
 BLACK CAT DHAN 152G
 AMY JO DHAN 20L
 GPFF AMBER JO

EPDs		
CD	9	SC 1.4
BW	2.9	DC 14
WW	79	YG -.68
YW	114	CW 21
MK	20	RE 1.24
TM	60	MB -.68
CM	5	\$MI 35

ACT BW 88 ADJ WW 713 ADJ YW 1,231 ADJ REA ADJ FAT ADJ IMF
 DONATED BY: MAGNESS LAND & CATTLE, CO / LAWRENCE FAMILY LIMOUSIN, TX / HALL CATTLE CO., TX / COYOTE HILLS RANCH, OK

The past national champion and four-time National MOE Gold Medal winner.



55 ELCX BENCHWARMER 363B

Selling 10 Units of Semen

LIM-FLEX(25/22.7) • HOMO BLACK (P1) • HOMO POLLED (P2) • LFM2059017

SAF FOCUS OF ER
 MYTTY IN FOCUS
 MYTTY COUNTESS 906
 JCL LODESTAR 27L
 SSTO SADIE 6854S
 THOMAS LUCY ROSE 9509

EPDs		
CD	15	SC 1.8
BW	-1.6	DC 14
WW	54	YG .08
YW	87	CW 13
MK	23	RE -.05
TM	50	MB .42
CM	10	\$MI 61

ACT BW 72 ADJ WW 644 ADJ YW ADJ REA ADJ FAT ADJ IMF
 DONATED BY: EDWARDS LAND & CATTLE CO., NC

This sire is becoming a calving-ease specialist with each calf crop. He also ranks in the top 2% for Marbling.

SILENT AUCTION

BEAR LAWN ART

Hand-carved, 14 in. high

DONATED BY: GAVETTE CATTLE



FARMHOUSE GIFT BASKET

Includes farmhouse pillow, farmhouse sign, cow sign

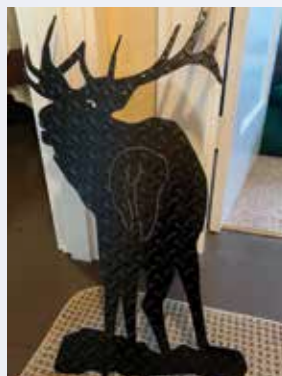
DONATED BY:
 PK COUNTRY DESIGNS



BUGLING ELK ART

Metal

DONATED BY: GAVETTE CATTLE



GOAT MILK SOAP SET

All handmade. Scents include lavender, coffee and cocoa, and honey and oatmeal

DONATED BY: HOMESTEAD'S
 SOAP & NATURAL PRODUCTS -
 ANNA HIXON



SILENT AUCTION

MASTERLINE V GRIP BOTTLE MOUNT/TUBE FEED INJECTOR SYRINGE

DONATED BY: STILLWATER MILLING CO., OK



“GREAT RANCHES OF THE WEST” BOOK

Photography by Jim Keen Stories
Written by Jim Keen with Ami Reeves

DONATED BY: STILLWATER MILLING CO., OK



TURQUOISE NECKLACE & EARRING SET

Genuine turquoise

DONATED BY: NANCY LAND



RING & EARRING SET

Sterling silver, earrings contain a black diamond base with clear stones cascaded. Made by RooBarb Studios, Findlay, OH

DONATED BY: HZ SHOW CATTLE - HANNAH & CHRIS ZIEGLER, OH



GATOR BELT & WALLET SET

DONATED BY: LIVE OAK CATTLE CO., LA

4 - 20 OZ. YETI CUPS

Option to be customized

DONATED BY: LIVE OAK CATTLE CO., LA

COPPER BRACELET SET

Bracelets with the sayings “every new day is a gift,” “hold tightly to what is good,” and “this too shall pass.” Made by RooBarb Studios, Findlay, OH

DONATED BY: HZ SHOW CATTLE - HANNAH & CHRIS ZIEGLER, OH





LIMOUSIN

NORTH AMERICAN LIMOUSIN FOUNDATION

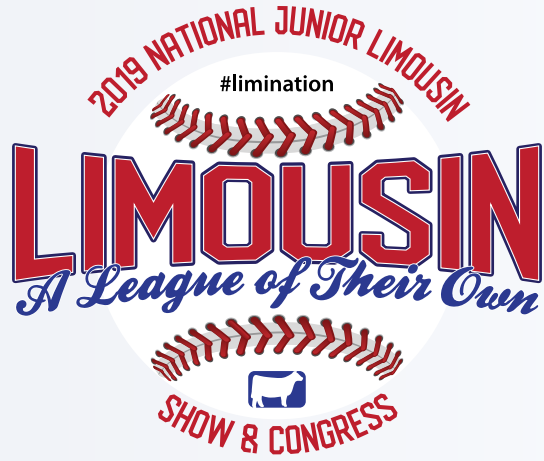
6 Inverness Court East, Ste. 260, Englewood, CO 80112-5595
P: (303) 220-1693 - F: (303) 220-1884 - limousin@nalf.org

BOARD OF DIRECTORS

PRESIDENT, GARY FUCHS	(254) 482-0611
VICE PRESIDENT, DEXTER EDWARDS	(910) 298-3012
SECRETARY, JIM BOB HENDRICKSON	(918) 521-9031
TREASURER, AUSTIN HAGER	(701) 626-2345
AT-LARGE, CURT WIECZOREK	(605) 227-4601
EX-OFFICIO, BRET BEGERT	(806) 334-7940
DR. MARK BARKER	(405) 520-5846
WADE BECKMAN	(208) 228-3348
GREG BLAYDES	(859) 338-9402
RANDY CORNS	(620) 750-0924
JOEY FREUND	(303) 475-6062
DAN HUNT	(308) 991-3373
BRUCE LAWRENCE	(806) 790-2535
CHARLES LINHART	(641) 446-7425
JOE MOORE	(540) 569-6219
GENE RAYMOND	(785) 448-3708

NALF STAFF

- MARK ANDERSON • Executive Director
- KATIE CAMPBELL • Director of Activities
- ALISON JONES • Director of DNA Processing & Accounting Operations
- TAMMY ANDERSON • DNA Processing & Accounting Assistant
- STEPHANIE KRAMER-BEDDO • Registry & Member Services Specialist
- ANDY REST • Regional Manager
- NATHAN SMITH • Regional Manager
- MALLORY BLUNIER • Director of Public Relations & Media
- TONYA AMEN • National Center for Beef Excellence



JUNE 29-JULY 5, 2019
SPRINGFIELD, MISSOURI

HOST HOTELS

DoubleTree Hotel

2431 N Glenstone Ave.
Springfield, MO 65803
Phone: 417/831-3131
Group Code: NAL

Fairfield Inn & Suites (behind DoubleTree)

2455 N. Glenstone Ave.
Springfield, MO 65803
Phone: 417/833-9599
Code: Junior Limousin Association

Group Rate for Both Hotels: \$99
BOOK BY MAY 29, 2019



**north american
limousin junior
association**

2018-19 BOARD OF DIRECTORS

- President: Randa Taylor, TX
- Vice President: Dominic Ruppert, IL
- Secretary: Hannah Ziegler, OH
- Treasurer: Lindsey Gulotta, LA
- Ex-Officio: Ethan Freund, CO
- Director: Callie Hicks, KY
- Director: Colt Schrader, OK
- Director: Tristan Gulotta, LA
- Director: Aaron Linhart, IA
- Director: Zane Gavette, WA
- Director: Brooke Falk, KS
- Staff Advisor: Katie Campbell
- Adult Advisor: Jim Bob Hendrickson

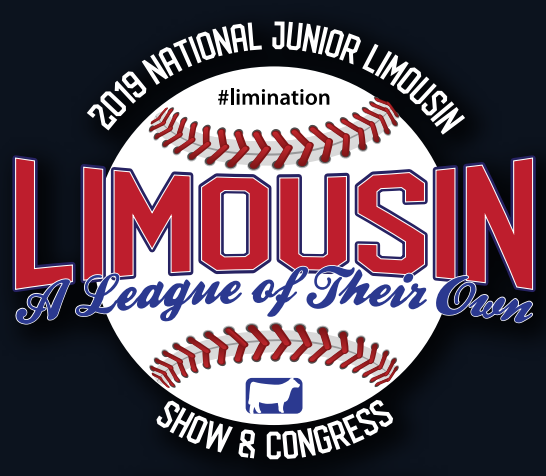
FROM: NALJA



To: the Contributors and Buyers,

*Thank You
for Your Continued Support*

Genetics on **LICE** Benefit Auction



JUNE 29-JULY 5, 2019
SPRINGFIELD, MISSOURI

