

MAGNESS BEEF BULLS

Western Slope

ANNUAL BULL SALE

SELLING 63

**REGISTERED BULLS
LIMOUSIN & LIM-FLEX**

APRIL 6, 2019

1 P.M. MDT

LOMA, COLORADO

WESTERN SLOPE CATTLEMEN'S LIVESTOCK AUCTION

Magness Land & Cattle Western Slope ANNUAL BULL SALE

SATURDAY

APRIL 6, 2019

1 P.M. MDT • LOMA, COLORADO

**Selling 63 Registered
Limousin & Lim-Flex (Angus Hybrid)
SPRING YEARLINGS & 2-YR-OLD BULLS**

SALE LOCATION

**WESTERN SLOPE CATTLEMEN'S
LIVESTOCK AUCTION**

GPS ADDRESS

41 12 Road • Loma, Colorado

SALE-DAY PHONES

John Pence..... 970-396-3584
Austin Gottschalk 970-396-0115
Kiley McKinna 402-350-3447
Mark Smith..... 515-229-5227

AUCTIONEER

Ronn Cunningham.....918-629-9382

LIVESTOCK REPRESENTATIVES

Andy Rest, *Limousin Today*.....406-670-5678
Alan Sears, *Western Ag Reporter* 970-396-7521
Jim Gies, *Western Livestock Journal* 970-590-0500

Sale Marketing Team

MC MARKETING MANAGEMENT

Kiley McKinna 402-350-3447

GRASSROOTS CONSULTING

Mark Smith..... 515-229-5227

TERMS & CONDITIONS

Terms are cash or check. The cattle sell under the standard terms and conditions recommended by the North American Limousin Foundation.

HERD HEALTH

All bulls will be accompanied with proper health certificates for immediate shipment to most locations in the United States. All cattle have been tested for: Arthrogryposis Multiplex (AM), Neuropathic Hydrocephalus Free (NH), Homozygous Polled and Black, and have had passed breeding soundness exams. All bulls are virgins, have been Trich tested and PAP scored at 4,809 ft.

VACCINATION PROGRAM

All bulls selling have been vaccinated/poured with Ivomec, Spirovac VL5, Titanium 5, TSV-2, Vision 7 Somnus with SPUR.

SUPPLEMENTAL INFORMATION

A supplement sheet with additional information will be available sale day and online at magnesscattle.com

ANNOUNCEMENTS

Announcements made sale day and from the auction block during the sale take precedence over printed material in the catalog or other printed material associated with the sale.

INSURANCE

Insurance will be available through Grassroots Insurance, 515-229-5227, sale day.

TRUCKING

Truckers will be available to assist you in shipping your purchase.

EPDs

Current as of 2-21-19



Platteville, Colorado

GARY MAGNESS, OWNER

Office, 970-785-6170 • John Pence, 970-396-3584

VIEW SALE VIDEOS ONLINE AT
WWW.MAGNESSCATTLE.COM

Watch and Bid Online at
CATTLEUSA.COM

Progressive Cattlemen,

We cordially welcome you to the Magness Land & Cattle Western Slope 3 Bull Sale scheduled for Saturday, April 6, 2019, at the Western Slope Cattlemen's Livestock Auction in Loma, Colorado. The bulls selling are Two-Year-Olds and Spring Yearlings that have ultrasound data, are semen tested, PAP scores and ready to go to work. Genetically, this outstanding set of bulls on offer are mates to the *Reserve Grand Champion and People's Choice Champion Lim-Flex Pen of three, the Grand Champion Carload and Reserve Champion Carload and People's Choice Champions from the 2019 National Western Stock Show* in Denver. Furthermore, this offering of bulls has been developed at an honest rate of feed consumption with longevity in mind and sorted based on calving-ease, elevation adaptability and structural integrity designed to handle various terrains.

Of the many factors that affect the bottom line in this business, the bull power we use in our breeding programs is the one factor we have the most control over, particularly in the commercial cow-calf segment of our industry. To that end, in this catalog, you will find EPD profiles that reflect the very best Limousin, Lim-Flex and Angus genetics available in the country. Furthermore, you will find PAP scores, ultrasound data and performance data including actual birth weight, adjusted weaning weight, adjusted yearling weight, adjusted scrotal circumference, ribeye area and percent IMF. When you analyze the bulls phenotypically, you will find the bulls to be docile, structurally correct, muscular and easy fleshing. In addition, you can add the inherent value of heterosis to the performance of your calf crop.

While the beef cattle industry is experiencing a market correction as it relates to 2016, the fact remains, the premium placed on genetically superior calves is also at an all-time high. The bulls that can sire market-topping calves are available in this sale as indicated by their visual traits and outstanding genetic profiles.

Once again we are offering a 5% discount with the purchase of 5-9 bulls and a 10% discount with the purchase of 10 bulls or more. Buyers also have the option to put one-third down sale day with the balance due October 15, 2019, for any bulls purchased in this sale. As always, we fully and unconditionally guaranteed the bulls to be breeders for the first breeding season as it relates to fertility. Please study our extended bull warranty program that covers not only fertility issues but, also injury, loss of use or death (find further details on page 7).

We look forward to your attendance. Plan to join us for lunch, and should you have any questions don't hesitate to call John Pence, Kiley McKinna or other members of the sale staff listed in the catalog.

Sincerely,
Gary Magness



Sale Schedule

Friday, April 5, 2019

Sale preview all afternoon

Saturday, April 6, 2019

8:00 AM Viewing Begins
Noon Complimentary Lunch
1:00 PM MDT **MAGNESS LAND & CATTLE
WESTERN SLOPE
BULL SALE**

DIRECTIONS

Western Slope Cattlemen's Livestock Auction:

Located at I-70, Exit 15.

GPS Address: 41 12 Road, Loma, CO

Physical Address: 1369 12 1/2 Road, Loma, CO

AIRPORTS & DRIVE TIMES

Grand Junction Regional Airport: 25 min.

Denver International Airport: 4 hrs., 30 min.

Salt Lake City International Airport: 4 hrs.

ACCOMMODATIONS

DoubleTree by Hilton, Grand Junction - 970-241-8888

THE MAGS PROGRAM

You're not just buying a bull...

YOU'RE BUYING AN INDUSTRY-LEADING PROGRAM



GUARANTEED SIGHT-UNSEEN PURCHASE PROGRAM

Our sight-unseen program is simple. If you can't attend, call Kiley McKinna, 402-350-3447 or John Pence, 970-396-3584, and give them your specifications and budget. We will provide you with a list of bulls we feel will meet your needs. If the bulls don't meet your specifications at delivery, you don't own them. We guarantee your bids will be confidential and your purchases will be executed at the lowest bid possible.

0% FINANCING

Pay 1/3 of purchase price at the sale. Balance is due October 15, 2019.

VOLUME PURCHASE PROGRAM

Buy in bulk and receive a discount.

Buy 5-9 bulls and receive a 5% discount.

Buy 10 or more bulls and receive a 10% discount.

BREED-LEADING, PREDICTABLE GENETICS

We have spent more than 30 years creating predictable, time-tested genetics with the combination of balanced EPDs and off the charts performance data. Our cattle perform on paper and in the pasture.

Limousin and Lim-Flex (Angus Hybrid) cattle deliver to your bottom line. With superior genetics, a simple crossbreeding plan and state-of-the-art selection tools, Limousin and Lim-Flex (Angus Hybrid) serve profit-minded cow/calf producers.

Using Limousin and Lim-Flex makes economic sense. Heterosis and breed complementarity are powerful forces that combine to produce the biggest advantage of beef cattle crossbreeding. This crossbred advantage can amount to as much as 25 percent greater lifetime productivity for crossbred cows as compared to straightbred cows.

At Magness cattle we offer a variety of genetic options to match your program's needs and market goals. Crossbreeding for the right blend of muscle, maternal ability and profit is easy with Limousin seedstock from Magness Land & Cattle.

With more than 30 years experience in the Limousin seedstock industry and 70 years in the commercial cattle business, Magness understands what it takes to be successful and we strive to assure the same success is enjoyed by our bulls customers.



Spring Yearling Bulls

LOTS 101-160

Being one of the largest suppliers of Lim-Flex bulls in the nation is a job we take very seriously. Given the volume of bulls we sell and the variety of customers we must service, we work diligently to provide a unique cross-section of bulls both from a parentage standpoint, as well as from an end product standpoint. Needless to say, we are extremely proud of the yearling bulls brought forth to you this year for your appraisal. We truly feel there is something for everyone whether it be calving-ease, high marbling, impressive growth, altitude tested or combination bulls that do many things very well. As customers, we value your comments and suggestions on how we can provide you an even better product in the future.

2-Year-Old Bulls

LOTS 161-163

As you study these big, stout 2-year-olds, please know we have taken every step available to ensure your purchase will serve you well for many years. These bulls have been rigorously culled while being developed with longevity as an utmost priority. Simply stated, these bulls should breed a lot of cows for many years. In addition to being able to handle heavy service, these herd sires represent the best sire lines and cow families available in our program, plus they have the built in convenience traits of homozygous black and polled, easy fleshing ability and inherent docility.

SPRING YEARLING BULLS



LOT 101 • MAGS Federal Reserve 1014F

Lot 101

MAGS Federal Reserve 1014F served as the lead bull of the 2019 National Western Stock Show People's Choice Champion and Reserve Grand Champion Pen of Lim-Flex bulls. Selling full possession and two-thirds semen interest in this elite herd sire prospect. Contact John Pence or Kiley McKinna for more details on purchasing an exclusive 5% semen share.

LOT	TATTOO	HPS/C	SIRE	CE	BW	WW	YW	MK	CM	SC	DC	YG	CW	RE	MB	\$MI
101	MAGS 1014F	HP/HB	MAGS CABLE	13	0.7	68	107	21	6	1.1	12	-16	41	.71	.26	61
1/5/18 • Lim-Flex 50% • PAP: NA • Act. BW: 72 • Adj. WW: 698 • Adj. YW: 1,237 • Adj. SC: 36.5 • Adj. REA: 12.8 • Adj. %IMF: 4.6																
102	MAGS 102F	P/B	MAGS ZAYLE	12	0.9	71	114	24	6	0.6	14	-34	26	.68	.17	60
1/1/18 • Lim-Flex 62% • PAP: 42 • Act. BW: 74 • Adj. WW: 841 • Adj. YW: 1,374 • Adj. SC: 36.3 • Adj. REA: 17.9 • Adj. %IMF: 3.8																
103	MAGS 129F	HP/HB	MAGS YIP	13	-0.3	56	87	20	7	1.1	12	-32	21	.46	.03	51
1/18/18 • Lim-Flex 75% • PAP: 43 • Act. BW: 72 • Adj. WW: 738 • Adj. YW: 1,282 • Adj. SC: 32.6 • Adj. REA: 13.1 • Adj. %IMF: 6.3																
104	MAGS 1017F	HP/HB	MAGS AVIATOR	15	-1.9	47	76	23	9	0.7	18	-24	22	.63	.14	51
1/21/18 • Lim-Flex 54% • PAP: 39 • Act. BW: 72 • Adj. WW: 596 • Adj. YW: 1,168 • Adj. SC: 33.3 • Adj. REA: 13.3 • Adj. %IMF: 3.8																
105	MAGS 201F	HP/HB	TMCK AMERICAN MADE 353D ET	11	1.4	64	102	20	7	0.7	16	-33	34	.73	.15	58
2/1/18 • Lim-Flex 68% • PAP: 43 • Act. BW: 76 • Adj. WW: 752 • Adj. YW: 1,301 • Adj. SC: 35.8 • Adj. REA: 16.0 • Adj. %IMF: 3.3																
106	MAGS 203F	HP/HB	TMCK CASH FLOW 247C	12	0.2	74	115	18	6	1.5	15	-14	29	.67	.19	60
2/2/18 • Lim-Flex 46% • PAP: 38 • Act. BW: 72 • Adj. WW: 740 • Adj. YW: 1,211 • Adj. SC: 34.8 • Adj. REA: 15.1 • Adj. %IMF: 3.8																
107	MAGS 209F	HP/B	MAGS CABLE	14	0.6	70	109	20	8	1.0	12	-24	35	.70	.22	61
2/3/18 • Lim-Flex 53% • PAP: 43 • Act. BW: 73 • Adj. WW: 760 • Adj. YW: 1,276 • Adj. SC: 37.4 • Adj. REA: 14.8 • Adj. %IMF: 3.3																
108	MAGS 211F	P/HB	MAGS CABLE COWBOY	11	0.5	57	89	24	6	1.1	12	-24	23	.52	.01	50
2/3/18 • Lim-Flex 54% • PAP: 42 • Act. BW: 76 • Adj. WW: 762 • Adj. YW: 1,289 • Adj. SC: 36.9 • Adj. REA: 13.4 • Adj. %IMF: 3.7																
109	MAGS 225F	HP/HB	MAGS CABLE COWBOY	9	0.8	63	100	23	6	1.0	10	-32	22	.69	.06	54
2/6/18 • Lim-Flex 56% • PAP: 41 • Act. BW: 74 • Adj. WW: 739 • Adj. YW: 1,379 • Adj. SC: 35.4 • Adj. REA: 14.5 • Adj. %IMF: 3.4																
110	MAGS 236F	P/HB	MAGS CABLE	14	0.5	68	103	23	8	1.3	9	-2	33	.70	.11	56
2/8/18 • Lim-Flex 46% • PAP: 37 • Act. BW: 74 • Adj. WW: 783 • Adj. YW: 1,182 • Adj. SC: 36.1 • Adj. REA: 15.1 • Adj. %IMF: 3.4																
111	MAGS 238F	HP/HB	TMCK CAMDEN YARDS 195C	12	0.8	66	109	22	8	1.0	13	-37	24	.87	-.01	53
2/8/18 • Lim-Flex 54% • PAP: 39 • Act. BW: 78 • Adj. WW: 697 • Adj. YW: 1,252 • Adj. SC: 38.6 • Adj. REA: 15.0 • Adj. %IMF: 3.7																
112	MAGS 246F	HP/HB	MAGS CADARA	12	1.2	70	108	22	6	1.1	12	-21	33	.65	.24	62
2/11/18 • Lim-Flex 45% • PAP: 43 • Act. BW: 74 • Adj. WW: 753 • Adj. YW: 1,352 • Adj. SC: 41.8 • Adj. REA: 15.2 • Adj. %IMF: 4.0																
113	MAGS 255F	HP/HB	MAGS Y-AXIS	13	0.9	74	120	22	8	1.1	17	-32	28	.79	.23	64
2/12/18 • Lim-Flex 50% • PAP: 45 • Act. BW: 74 • Adj. WW: 806 • Adj. YW: 1,281 • Adj. SC: 37.3 • Adj. REA: 15.7 • Adj. %IMF: 3.3																
114	MAGS 267F	P/HB	MAGS BLACK SALVIA	11	1.5	66	105	26	7	1.1	7	-35	21	.71	.04	54
2/14/18 • Lim-Flex 56% • PAP: 41 • Act. BW: 68 • Adj. WW: 717 • Adj. YW: 1,074 • Adj. SC: 34.4 • Adj. REA: 12.6 • Adj. %IMF: 3.3																
115	MAGS 268F	P/HB	JMFA RODEMASTER 294Z	10	1.0	61	92	23	7	0.3	12	-33	18	.61	.12	55
2/14/18 • Lim-Flex 59% • PAP: 40 • Act. BW: 76 • Adj. WW: 730 • Adj. YW: 1,332 • Adj. SC: 35.8 • Adj. REA: 15.1 • Adj. %IMF: 2.1																
116	MAGS 274F	P/HB	MAGS ZAPPO	15	-0.5	55	88	23	9	0.8	12	-29	25	.68	.14	54
2/15/18 • Lim-Flex 54% • PAP: 43 • Act. BW: 72 • Adj. WW: 669 • Adj. YW: 1,066 • Adj. SC: 35.4 • Adj. REA: 15.2 • Adj. %IMF: 3.7																

SPRING YEARLING BULLS



LOT 117 • MAGS 302F



LOT 125 • MAGS 3001F

LOT	TATTOO	HPS/C	SIRE	CE	BW	WW	YW	MK	CM	SC	DC	YG	CW	RE	MB	\$MI
117	MAGS 302F	HP/HB	JMFA RODEMASTER 294Z	11	0.2	60	92	24	6	0.4	11	-38	22	.70	-.04	50
2/20/18 • Lim-Flex 60% • P _{AP} : 39 • Act. BW: 75 • Adj. WW: 769 • Adj. YW: 1,279 • Adj. SC: 37.1 • Adj. REA: 14.8 • Adj. %IMF: 3.8																
118	MAGS 306F	P/HB	MAGS CABLE	14	0.4	62	94	21	7	1.1	12	-27	32	.79	.21	59
2/21/18 • Lim-Flex 46% • P _{AP} : 41 • Act. BW: 76 • Adj. WW: 687 • Adj. YW: 1,223 • Adj. SC: 42.2 • Adj. REA: 14.9 • Adj. %IMF: 3.8																
119	MAGS 310F	HP/HB	MAGS CABLE COWBOY	11	0.3	65	104	20	5	0.9	12	-24	28	.56	.21	59
2/22/18 • Lim-Flex 50% • P _{AP} : 41 • Act. BW: 78 • Adj. WW: 862 • Adj. YW: 1,283 • Adj. SC: 41.7 • Adj. REA: 13.9 • Adj. %IMF: 2.8																
120	MAGS 321F	HP/HB	MAGS Y-AXIS	10	1.1	68	107	25	7	1.3	15	-38	24	.92	-.05	52
2/25/18 • Lim-Flex 50% • P _{AP} : 41 • Act. BW: 83 • Adj. WW: 850 • Adj. YW: 1,306 • Adj. SC: 38.9 • Adj. REA: 16.9 • Adj. %IMF: 2.1																
121	MAGS 324F	P/HB	JMFA RODEMASTER 294Z	11	1.0	65	102	24	7	0.6	14	-39	24	.78	-.02	52
2/26/18 • Lim-Flex 56% • P _{AP} : 36 • Act. BW: 79 • Adj. WW: 795 • Adj. YW: 1,301 • Adj. SC: 37.9 • Adj. REA: 14.6 • Adj. %IMF: 3.2																
122	MAGS 2016F	P/HB	TMCK ALFALFA 35X	10	1.8	71	111	23	8	1.2	5	-39	23	.96	-.04	53
2/27/18 • Lim-Flex 62% • P _{AP} : 40 • Act. BW: 77 • Adj. WW: 800 • Adj. YW: 1,245 • Adj. SC: 37 • Adj. REA: 13.6 • Adj. %IMF: 3.2																
123	MAGS 326F	HP/B	MAGS DJANGO	13	-0.3	60	101	19	6	0.9	14	-26	26	.54	-.02	50
2/27/18 • Lim-Flex 45% • P _{AP} : 42 • Act. BW: 74 • Adj. WW: 694 • Adj. YW: 1,212 • Adj. SC: 37.5 • Adj. REA: 15.6 • Adj. %IMF: 3.0																
124	MAGS 2018F	HP/HB	MAGS WINSTON	14	-0.3	60	98	23	8	0.5	13	-12	33	.42	.30	60
2/28/18 • Lim-Flex 50% • P _{AP} : 41 • Act. BW: 80 • Adj. WW: 772 • Adj. YW: 1,242 • Adj. SC: 33 • Adj. REA: 13.7 • Adj. %IMF: 4.0																
125	MAGS 3001F	HP/HB	MAGS ANCHOR	10	1.1	60	85	19	6	1.2	9	-31	14	.61	.10	54
3/1/18 • Lim-Flex 50% • P _{AP} : 43 • Act. BW: 90 • Adj. WW: 732 • Complete Performance Information Available Sale Day																
126	MAGS 3004F	HP/HB	RITO 6EM ₃ OF 4L1 EMBLAZON	14	-1.1	57	83	19	6	1.2	13	-24	21	.70	.08	52
3/3/18 • Lim-Flex 50% • P _{AP} : 49 • Act. BW: 77 • Adj. WW: 747 • Complete Performance Information Available Sale Day																
127	MAGS 344F	HP/HB	DHIL COLT 5793C	14	-0.4	67	106	21	6	0.8	11	-27	32	.88	.05	54
3/3/18 • Lim-Flex 50% • P _{AP} : 37 • Act. BW: 75 • Adj. WW: 796 • Complete Performance Information Available Sale Day																



LOT 126 • MAGS 3004F



LOT 127 • MAGS 3344F

OUR BULLS PERFORM AT THE HIGHEST LEVELS

PAP TESTING

Cattlemen running cattle at elevations above 5,000 feet are inherently aware of a condition known as Brisket Disease. Brisket Disease, also known as High Mountain Disease or Dropsy, is one of the Rocky Mountain Region's most costly diseases with instances up to a 30% death loss. Brisket Disease can be associated with abortions, dead calves at birth, peewee calves at weaning, and the most commonly distinguished symptom, retained fluid in the chest area and eventually death.

Cattle differ in how they respond to the availability of oxygen associated with a raise in elevation. In order to handle the lack of oxygen, cattle respond by constricting vessels to push blood through more area of the lung to gather more oxygen. This in turn causes the walls of the arteries in the lungs to thicken. This causes the heart to pump harder in order to get enough blood through the thickened arteries. If these conditions become too acute, the heart will actually pump hard enough to push fluid through the walls of the pulmonary artery and blood vessels. This fluid is what causes the swelling of the chest in cattle with Brisket Disease.

Research has shown the thickening of the walls of the arteries, which causes Brisket Disease, to be highly heritable. This means it can be controlled with proper genetic management. There are two ways to stop susceptibility to Brisket. The first is natural selection. When cattle are ran at higher elevations for extended periods of time the disease will take it's toll. Cattle exhibiting signs of Brisket will be culled due to the poor performance associated with the disease.

The second method used to control Brisket Disease is Pulmonary Arterial Pressures (PAP) testing. PAP scores are obtained by a procedure called "right heart/pulmonary artery catheterization". A true average pressure is measured in millimeters of mercury (mmHg).

Using natural selection in your cow herd to eliminate cattle susceptible in your herd and requiring all new genetics (your bulls) to be properly PAP tested is a very effective way to control Brisket Disease.

PAP testing is a tool, that when used correctly, can increase the overall performance of cattle run at higher elevations. Given it's importance to profitability for ranchers who run their cattle at altitude, Magness Land & Cattle is providing PAP scores on all bulls selling. Bulls were also trichomoniasis tested and can go anywhere in the United States. Whats more, every was fertility tested and sells fully guaranteed as outlined on Page 7.

Note: PAP scores were recorded by Dr. Tim Holt at Colorado State University



BULL WARRANTY PROGRAM

In an effort to protect, simplify and enhance your MAGS bull purchasing experience, we offer an extended herd bull warranty program, which reaches beyond our unconditional one-breeding season guarantee.

Magness Land & Cattle guarantees to sell a bull that is sound and has passed a semen test by an accredited veterinarian. Should any bull purchased through the Magness Land & Cattle bull sale fail to be a satisfactory breeder or be unable to physically service a cow or heifer, he will be replaced with a bull of equal value. Should this not be possible, we will issue a credit to go towards the purchase of another bull. We will not however provide warranty for mismanagement.

While under our warranty the bull is covered for injury, sickness or death. We will service your needs with a replacement bull or sale credit. Should you have any problems with a bull please contact John Pence and he will work to make sure your cows get bred and you are a satisfied customer. We do have back up bulls set aside, which will be first resolution to any warranty issues. The Warranty Program is designed to protect your purchase during the most high risk time of a bull's life.

Warranty Coverage

We offer the following options which are required to be paid on the day of the sale. It is the buyer's responsibility to purchase at the settlement desk.

PLAN	DURATION	RATE
#1	6 months	3% of Purchase Price
#2	12 months	6% of Purchase Price

PLAN 1 6 months • 3% of Purchase Price

This plan covers the bull through the spring breeding season and is 100% of the purchase price less the salvage value when applicable.

PLAN 2 12 months • 6% of Purchase Price

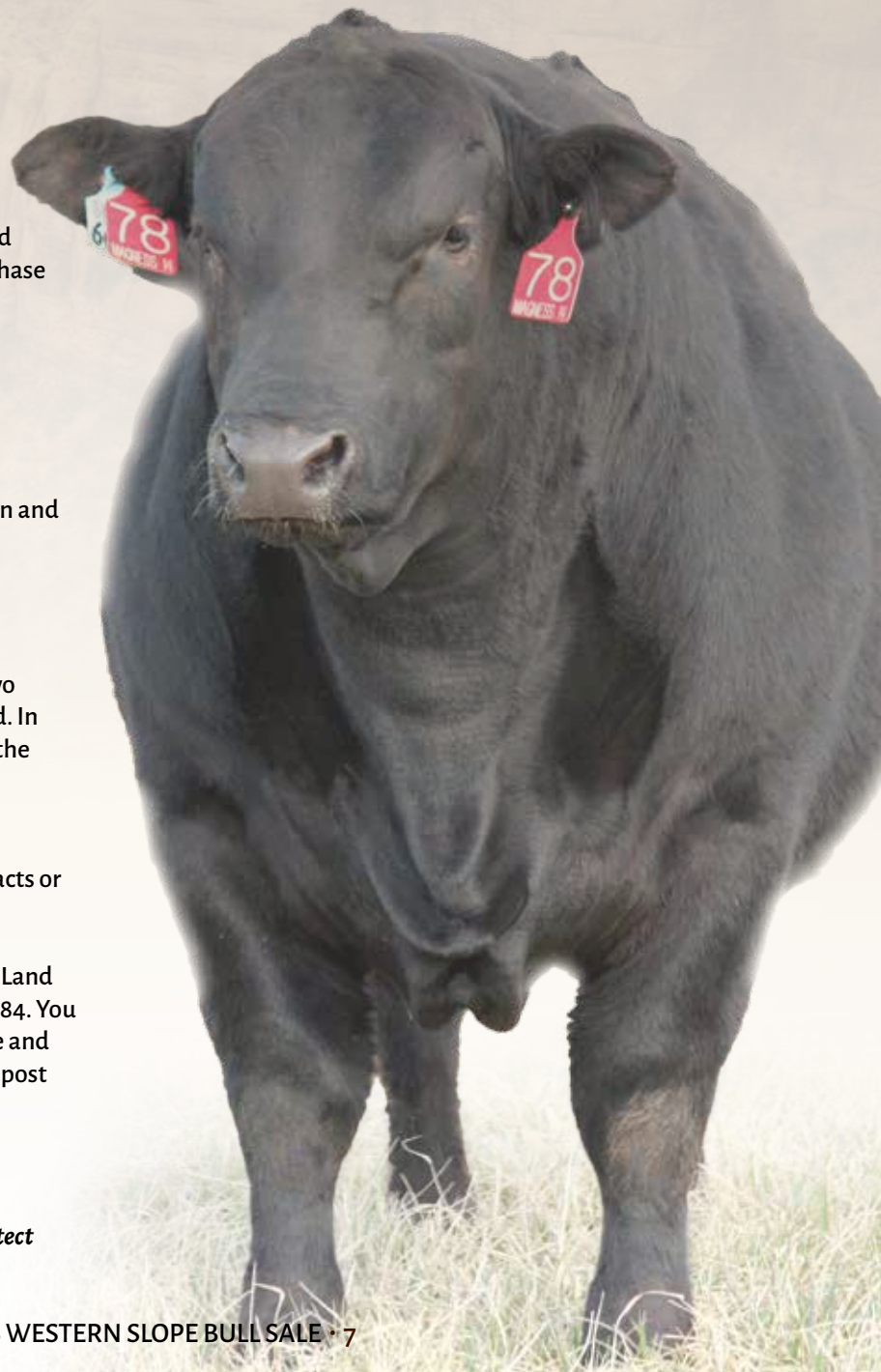
This plan covers the bull for a full year which will include two breeding seasons (spring and fall) and one wintering period. In Plan #2 the warranty covers 85% of the purchase price less the salvage value when applicable.

Exclusion to Warranty:

Any injury or death due to malicious, willful or intentional acts or mistreatment are considered fraudulent claims.

Should an issue arise with your bull, please notify Magness Land & Cattle immediately by phone 970-785-6170 or 970-396-3584. You will also need to contact a licensed veterinarian to diagnose and treat the animal and fill out a vet form. If the animal dies, a post mortem will be required.

Note: All buyers that opt to utilize the Magness Land & Cattle financing program will be automatically charged the Plan #1 6-month bull warranty on their invoice. This is designed to protect both the buyer and seller.



SPRING YEARLING BULLS



LOT 132 • MAGS 346F



LOT 141 • MAGS 381F

LOT	TATTOO	HPS/C	SIRE	CE	BW	WW	YW	MK	CM	SC	DC	YG	CW	RE	MB	\$MI
128	MAGS 335F	HP/HB	MAGS DRIFTWOOD	13	0.0	62	101	26	8	0.6	12	-.52	18	.95	-.14	48
2/28/18 • Lim-Flex 68% • P _{AP} : 39 • Act. BW: 75 • Adj. WW: 758 • Adj. YW: 1,321 • Adj. SC: 36.5 • Adj. REA: 14.9 • Adj. %IMF: 2.5																
130	MAGS 342F	HP/B	AHCC DIGGIN DEEP 903D ET	12	1.1	80	123	22	6	1.0	14	-.24	30	.53	.19	63
3/2/18 • Lim-Flex 62% • P _{AP} : 39 • Act. BW: 79 • Adj. WW: 891 • Complete Performance Information Available Sale Day																
131	MAGS 349F	P/B	MAGS CABLE COWBOY	10	1.0	53	86	18	6	1.2	13	-.22	25	.52	.13	53
3/4/18 • Lim-Flex 53% • P _{AP} : 34 • Act. BW: 79 • Adj. WW: 637 • Complete Performance Information Available Sale Day																
132	MAGS 346F	HP/R	MAGS DJANGO	14	-0.9	61	101	23	8	1.0	16	-.28	25	.61	.10	55
3/4/18 • Lim-Flex 42% • P _{AP} : 40 • Act. BW: 77 • Adj. WW: 723 • Complete Performance Information Available Sale Day																
133	MAGS 3111F	HP/HB	MAGS ANCHOR	10	1.4	64	90	18	6	1.2	9	-.31	14	.61	.10	55
3/5/18 • Lim-Flex 56% • P _{AP} : 49 • Act. BW: 75 • Adj. WW: 773 • Complete Performance Information Available Sale Day																
134	MAGS 351F	HP/B	MAGS DJANGO	12	0.2	75	125	24	7	1.0	14	-.29	32	.61	-.01	55
3/5/18 • Lim-Flex 43% • P _{AP} : 47 • Act. BW: 75 • Adj. WW: 829 • Complete Performance Information Available Sale Day																
135	MAGS 355F	P/HB	MAGS DRIFTWOOD	14	-0.7	61	100	26	8	0.7	14	-.44	17	.90	-.01	52
3/5/18 • Lim-Flex 53% • P _{AP} : 45 • Act. BW: 67 • Adj. WW: 730 • Complete Performance Information Available Sale Day																
136	MAGS 358F	HP/HB	ELCX BENCHWARMER 363B	12	0.7	62	97	22	8	1.0	13	-.18	18	.40	.17	56
3/6/18 • Lim-Flex 42% • P _{AP} : 37 • Act. BW: 75 • Adj. WW: 728 • Complete Performance Information Available Sale Day																
137	MAGS 361F	HP/HB	MAGS CABLE COWBOY	11	0.7	66	110	25	5	0.8	13	-.26	30	.59	.06	55
3/7/18 • Lim-Flex 53% • P _{AP} : 47 • Act. BW: 77 • Adj. WW: 799 • Complete Performance Information Available Sale Day																
138	MAGS 364F	HP/HB	MAGS DEEP SEA COWBOY	10	2.0	79	125	21	5	1.1	12	-.22	39	.62	.19	63
3/9/18 • Lim-Flex 53% • P _{AP} : 41 • Act. BW: 78 • Adj. WW: 837 • Complete Performance Information Available Sale Day																
139	MAGS 367F	HP/HB	JMFA RODEMASTER 294Z	11	0.9	67	104	22	6	0.3	13	-.34	26	.70	.23	61
3/10/18 • Lim-Flex 56% • P _{AP} : 39 • Act. BW: 79 • Adj. WW: 792 • Complete Performance Information Available Sale Day																
140	MAGS 371F	HP/HB	MAGS CABLE	14	0.7	64	98	17	8	1.0	12	-.15	33	.56	.33	63
3/11/18 • Lim-Flex 50% • P _{AP} : 43 • Act. BW: 74 • Adj. WW: 757 • Complete Performance Information Available Sale Day																
141	MAGS 381F	HP/HB	MAGS CABLE	14	0.5	60	95	19	8	1.2	11	-.25	33	.76	.14	55
3/12/18 • Lim-Flex 53% • P _{AP} : 37 • Act. BW: 74 • Adj. WW: 707 • Complete Performance Information Available Sale Day																
142	MAGS 382F	P/HB	MAGS CABLE COWBOY	11	0.7	65	102	20	7	1.2	13	-.29	21	.65	.10	56
3/12/18 • Lim-Flex 50% • P _{AP} : 36 • Act. BW: 65 • Adj. WW: 745 • Complete Performance Information Available Sale Day																
143	MAGS 388F	HP/HB	CJSL CREED 5042C	14	1.2	70	111	21	8	0.6	12	-.31	24	.65	.09	57
3/13/18 • Lim-Flex 67% • P _{AP} : 42 • Act. BW: 79 • Adj. WW: 772 • Complete Performance Information Available Sale Day																
144	MAGS 391F	HP/HB	MAGS ZAPPO	11	1.0	58	90	24	7	0.5	13	-.34	15	.61	.04	52
3/14/18 • Lim-Flex 58% • P _{AP} : 40 • Act. BW: 77 • Adj. WW: 696 • Complete Performance Information Available Sale Day																
145	MAGS 395F	HP/HB	MAGS Y-AXIS	12	0.8	70	111	23	6	0.9	16	-.34	20	.64	.03	55
3/14/18 • Lim-Flex 56% • P _{AP} : 49 • Act. BW: 77 • Adj. WW: 828 • Complete Performance Information Available Sale Day																
146	MAGS 401F	HP/HB	JMFA RODEMASTER 294Z	11	0.1	58	88	23	7	0.6	11	-.40	16	.75	-.03	50
3/16/18 • Lim-Flex 56% • P _{AP} : 44 • Act. BW: 77 • Adj. WW: 727 • Complete Performance Information Available Sale Day																
147	MAGS 410F	HP/HB	MAGS CABLE COWBOY	10	0.8	54	82	25	6	1.0	10	-.33	17	.60	.01	49
3/18/18 • Lim-Flex 62% • P _{AP} : 39 • Act. BW: 81 • Adj. WW: 696 • Complete Performance Information Available Sale Day																

SPRING YEARLING BULLS



LOT 155 • MAGS 471F



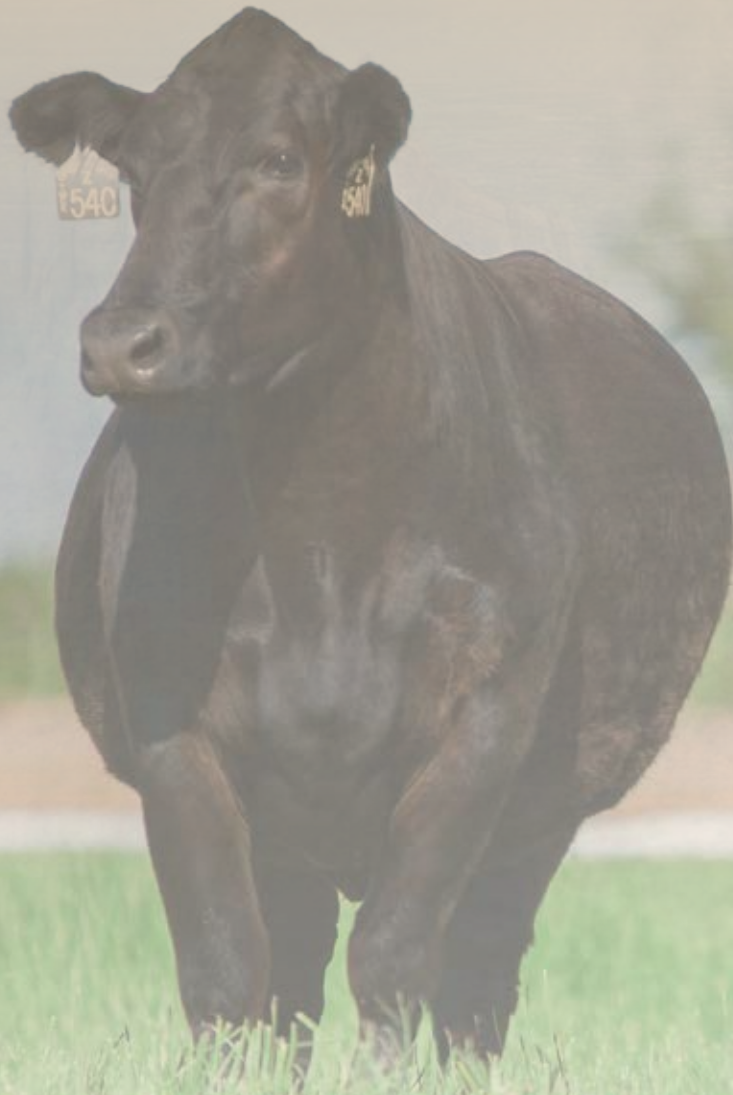
LOT 162 • MAGS 735E

LOT	TATTOO	HPS/C	SIRE	CE	BW	WW	YW	MK	CM	SC	DC	YG	CW	RE	MB	\$MI
148	MAGS 418F	HP/HB	MAGS DOUBLE DATE	12	0.1	70	107	19	7	1.3	12	-23	26	.67	.25	62
3/20/18 • Lim-Flex 53% • PAP: 40 • Act. BW: 73 • Adj. WW: 768 • Complete Performance Information Available Sale Day																
149	MAGS 430F	HP/HB	MAGS CABLE	13	1.2	73	116	21	7	1.2	13	-33	37	.88	.17	61
3/25/18 • Lim-Flex 50% • PAP: 42 • Act. BW: 84 • Adj. WW: 792 • Complete Performance Information Available Sale Day																
150	MAGS 440F	P/B	MAGS ZAPPO	12	1.2	66	104	26	7	0.6	14	-33	22	.71	-.07	50
3/30/18 • Lim-Flex 56% • PAP: 43 • Act. BW: 81 • Adj. WW: 825 • Complete Performance Information Available Sale Day																
151	MAGS 443F	HP/HB	MAGS DEEP SEA COWBOY	11	0.5	63	95	17	7	1.3	10	-14	27	.41	.23	59
3/31/18 • Lim-Flex 46% • PAP: 42 • Act. BW: 78 • Adj. WW: 747 • Complete Performance Information Available Sale Day																
152	MAGS 448F	HP/HB	MAGS CABLE	14	0.2	72	113	22	8	1.3	13	-.08	40	.60	.49	70
4/3/18 • Lim-Flex 37% • PAP: 40 • Act. BW: 78 • Adj. WW: 896 • Complete Performance Information Available Sale Day																
153	MAGS 455F	HP/B	MAGS DJANGO	12	-0.3	67	107	20	5	1.5	14	-23	23	.55	.10	56
4/7/18 • Lim-Flex 37% • PAP: 40 • Act. BW: 68 • Adj. WW: 688 • Complete Performance Information Available Sale Day																
154	MAGS 460F	HP/HB	MAGS CABLE COWBOY	9	1.4	63	100	20	5	0.9	15	-.20	25	.49	.13	56
4/10/18 • Lim-Flex 50% • PAP: 38 • Act. BW: 79 • Adj. WW: 747 • Complete Performance Information Available Sale Day																
155	MAGS 471F	HP/B	MAGS CABLE COWBOY	10	1.0	62	95	25	6	1.0	12	-.38	21	.61	-.17	46
4/15/18 • Lim-Flex 75% • PAP: 42 • Act. BW: 79 • Adj. WW: 820 • Complete Performance Information Available Sale Day																
156	MAGS 474F	HP/HB	MAGS ABRACADABRA	12	-0.4	60	93	22	8	1.3	13	-.05	25	.36	.23	57
4/16/18 • Lim-Flex 37% • PAP: 40 • Act. BW: 71 • Adj. WW: 785 • Complete Performance Information Available Sale Day																
157	MAGS 487F	P/B	MAGS ACAPULCO	10	0.3	45	70	23	6	0.8	12	-.30	14	.56	.07	49
4/21/18 • Lim-Flex 56% • PAP: 39 • Act. BW: 74 • Adj. WW: 706 • Complete Performance Information Available Sale Day																
158	MAGS 488F	HP/B	MAGS ACAPULCO	10	2.0	63	97	20	6	0.6	12	-.32	10	.58	.12	56
4/21/18 • Lim-Flex 53% • PAP: 42 • Act. BW: 80 • Adj. WW: 844 • Complete Performance Information Available Sale Day																
159	MAGS 489F	P/HB	MAGS DRIFTWOOD	13	0.2	62	100	26	7	0.8	11	-.37	24	.84	-.04	50
4/23/18 • Lim-Flex 56% • PAP: 36 • Act. BW: 79 • Adj. WW: 786 • Complete Performance Information Available Sale Day																
160	MAGS 496F	P/HB	MAGS ZAPPO	11	0.9	57	89	22	8	0.9	16	-.33	15	.72	-.03	49
5/13/18 • Lim-Flex 56% • PAP: 34 • Act. BW: 81 • Adj. WW: 651 • Complete Performance Information Available Sale Day																

2-YEAR-OLD BULLS

LOT	TATTOO	HPS/C	SIRE	CE	BW	WW	YW	MK	CM	SC	DC	YG	CW	RE	MB	\$MI
161	MAGS 699E	HP/HB	MAGS CABLE COWBOY	13	-0.9	63	100	23	7	1.1	12	-.31	21	.74	.11	56
3/17/17 • Lim-Flex 50% • PAP: 45 • Act. BW: 78 • Adj. WW: 738 • Adj. YW: 1,307 • Adj. SC: 37 • Adj. REA: 16.6 • Adj. %IMF: 2.4																
162	MAGS 735E	HP/HB	MAGS CABLE	16	-0.7	61	92	22	9	0.7	14	-.13	35	.53	.50	68
3/24/17 • Lim-Flex 43% • PAP: 47 • Act. BW: 74 • Adj. WW: 734 • Adj. YW: 1,199 • Adj. SC: 33 • Adj. REA: 12.7 • Adj. %IMF: 4.9																
163	MAGS 891E	HP/HB	MAGS CABLE COWBOY	11	1.1	59	92	19	6	1.0	12	-.38	12	.62	.10	55
4/6/17 • Lim-Flex 50% • PAP: 46 • Act. BW: 87 • Adj. WW: 706 • Adj. YW: 1,178 • Adj. SC: 38 • Adj. REA: 14.2 • Adj. %IMF: 3.3																

CALVING-EASE IS OUR TOP PRIORITY



CALVING-EASE MEANS PROFIT

Calving-ease and calf vigor are traits upon which the Limousin breed was founded on in this country. Relative to growth, the Limousin breed remains a calving-ease leader. Easy births not only allow cows the opportunity to breed back faster, they ultimately result in more pounds to sell at weaning.

We have made a concentrated effort to bring you a variety of bulls that excel in the beef industry's Number 1 profitability trait—calving-ease. Take note, we have gone the extra mile in our breeding program to propagate genetics that excel in terms of calving-ease by utilizing genetics we know are easy calving.

As you study the table below, you will notice the bulls offered in this sale excel in all three calving-ease measurements—Calving East Direct, Birth Weight and Calving Ease Maternal. However, as evidenced by the table we have been able to maintain industry leading levels of calving-ease without sacrificing growth and carcass performance. Take note of how our Weaning Weight, Yearling Weight and Carcass EPDs stack up not only to Limousin and Lim-Flex (Angus Hybrids) breed averages, but to other competing breeds as well.

The bottom line is this, with Magness Land & Cattle bulls, you CAN have the best of both worlds. Calves that come light and easy at birth, but with the inherent genetic ability to efficiently produce pounds—that is a profitable combination.



**MAGNESS LAND & CATTLE EPD AVERAGES
COMPARED TO OTHER BREED EPD AVERAGES.**

(2017-2018 U.S. born non-parents on common base, Spring 2019 NCE)

	CE	BW	WW	YW	MK	CM	SC	DC	YG	CW	RE	MB	\$MI
MAGS Sale Bulls	12	0.5	64	100	22	7	0.9	13	-.27	25	.68	.13	56
Limousin	11	1.0	61	91	21	6	0.5	12	-.71	10	1.10	-.39	40
Lim-Flex	12	0.7	64	100	22	7	0.9	12	-.34	22	.72	.05	54
Red Angus	12	-1.4	57	90	23	7	-	-	.10	16	.03	.38	-
Chianina	8	1.7	46	69	14	3	-	-	-.15	11	.32	.26	-
Shorthorn	9	1.5	51	76	19	4	-	-	-.34	-12	.06	-.02	-
Maine Anjou	8	1.0	45	61	17	1	-	-	-.21	7	.32	.09	-
Simmental Hybrid	12	0.6	65	99	22		-	11	-.23	30	.62	.28	-
Gelbvieh Hybrid	13	0.0	63	95	22	7	-	12	-.18	20	.49	.32	-

REFERENCE SIRES



MAGS ANCHOR



MAGS AVIATOR



MAGS CABLE



MAGS ABRACADABRA

LIMOUSIN SIRES

BULL	SIRE	DAM	CE	BW	WW	YW	MK	CM	SC	DC	YG	CW	RE	MB	\$MI
MAGS YIP	MAGS THE GENERAL	AUTO CARMINDA 656S	12	1.3	64	106	16	4	0.4	10	-.45	25	.48	-.18	47
TMCK AMERICAN MADE 353D ET	WULFS XCLUSIVE 2458X	TMCK UPPER HAND 54Y	9	3.5	76	119	14	6	0.4	20	-.56	28	.85	.04	59

LIM-FLEX SIRES

BULL	SIRE	DAM	CE	BW	WW	YW	MK	CM	SC	DC	YG	CW	RE	MB	\$MI
CJSL CREED 5042C	MAGS AVIATOR	CJSL 2090Z	18	0.0	68	108	19	10	0.5	14	-.21	12	.68	.49	70
MAGS ANCHOR	LH WAR HERO 195W	MGS XIPHOPAGOUS	10	1.3	67	99	18	5	1.1	12	-.31	22	.66	.10	56
MAGS AVIATOR	MAGS WINSTON	MAGS XTRA REST	16	-0.9	62	97	15	10	0.0	19	-.21	26	.71	.17	57
MAGS CABLE	MAGS APPLESEED	MAGS ZEQUIN	15	1.2	77	120	15	8	1.4	11	-.2	41	.84	.34	67
MAGS Y-AXIS	TC ABERDEEN 759	MAGS UAHUKA	14	-0.8	66	109	26	9	1.2	20	-.42	21	.94	-.04	52
TMCK CAMDEN YARDS 195C	TMCK ALFALFA 35X	TMCK CASUAL AFFAIR 311A	12	0.1	79	132	23	9	0.9	10	-.39	34	1.0	-.05	56
TMCK CASH FLOW 247C	MAGS ALI	TMCK NINA 17X	8	3.1	109	177	12	4	1.8	20	-.01	50	.87	.21	71
AHCC DAKOTA THUNDER 363D	AHCC ANGUS VALLEY 911B	AHCC MISS ROBIN A363	14	-0.5	71	117	21	9	1.1	13	-.10	34	.30	.31	64
AHCC DIGGIN DEEP 903D ET	EBFL YPSILANTI 420Y	LVL5 9066U	12	0.7	75	114	16	8	1.3	15	-.31	35	.68	.06	57
DHIL COLT 5793C	PVF INSIGHT 0129	PBR5 TOUCH ME GENTLY 798T	12	0.6	67	106	23	6	1.0	11	-.39	44	1.3	-.26	44
ELCX BENCHWARMER 363B	MYTTY IN FOCUS	SSTO SADIE 6854S	15	-1.2	56	90	23	10	1.8	15	.10	22	.04	.52	65
JMFA RODEMASTER 294Z	LH RODEMASTER 338R	MBLN WONDERING EYE 076W	10	0.7	64	96	20	6	-0.1	11	-.50	14	.77	-.01	53
MAGS ABRACADABRA	DHVO DEUCE 132R	BOHI RHONDA 314R	8	2.7	74	114	16	4	0.8	15	-.41	26	.77	-.35	43
MAGS ACAPULCO	CONNEALY CONSENSUS 7229	EXLR LUVLY 821M	10	0.8	54	82	22	6	0.4	12	-.25	7	.42	.15	54
MAGS BLACK SALVIA	TMCK ALFALFA 35X	TMCK540Z	11	1.3	66	107	27	9	1.1	5	-.30	27	.79	.03	54
MAGS CABLE COWBOY	MAGS YIP	LHT MS THUNDER 36X	10	1.2	69	112	20	6	1.2	13	-.22	26	.49	.12	57
MAGS CADARA	MAGS APPLESEED	MAGA ADARA	12	1.4	72	110	20	7	1.0	11	-.27	30	.72	.15	59
MAGS DEEP SEA COWBOY	LH WAR HERO 195W	MAGS ZYHNA	10	0.8	71	111	18	5	1.2	12	-.19	33	.47	.31	64
MAGS DJANGO	SILVEIRAS MISSION NEXUS 1378	MAGS BRILLIANCE	14	-1.7	62	101	21	7	1.3	14	-.25	18	.46	.08	54
MAGS DOUBLE DATE	EF XCESSIVE FORCE	WULFS BLIND DATE 4249B	12	-0.4	78	118	16	8	2.0	14	-.03	36	.52	.46	70
MAGS DRIFTWOOD	TMCK APOLLO 010A	MAGS BACK ON CAMPUS	14	-0.8	59	95	26	9	0.6	11	-.49	7	.94	-.05	50
MAGS WINSTON	BT CROSSOVER 758N	MAGS STRAWBERRY	14	-0.7	65	110	25	6	-0.2	15	-.18	51	.69	.38	65
MAGS ZAPPO	MAGS XYLOID	MAGS TIMELESS	12	1.2	62	95	25	8	0.7	16	-.28	10	.55	.02	52
TMCK ALFALFA 35X	S A V PIONEER 7301	TMCK JOYCE 570U	13	-0.7	70	114	23	12	0.9	-2	-.24	30	.82	.16	59

ANGUS SIRE

BULL	SIRE	DAM	CE	BW	WW	YW	MK	CM	SC	DC	YG	CW	RE	MB	\$MI
RITO 6EM3 OF 4L1 EMBLAZON	O C C EMBLAZON 854E	RITA 4L1 OF 2536 208	18	-2.7	63	100	18	4	1.1	14	.16	24	.35	.59	69



MAGS ACAPULCO



MAGS CABLE COWBOY



MAGS WINSTON



MAGS ZAPPO

NOTES

Thank You



# LOTS	GROSS	AVERAGE
_____ SPRING YEARLING BULLS	_____	_____
_____ 2-YEAR-OLD BULLS	_____	_____
_____ TOTAL	_____	_____



Marketing Management

648 West Sawgrass Trail
Dakota Dunes, SD 57049

Magness Land & Cattle
Western Slope
ANNUAL BULL SALE

SATURDAY, APRIL 6, 2019
1 P.M. MDT • LOMA, COLORADO

Selling 63 Reg. Limousin & Lim-Flex (Angus Hybrid)
SPRING YEARLINGS & 2-YR-OLD BULLS

0% FINANCING • PAP TESTED • VOLUME DISCOUNTS • CALVING-EASE • RANCH DEVELOPED