

Peterson's L4 Bar Limousin

**42nd Annual
Production Sale**

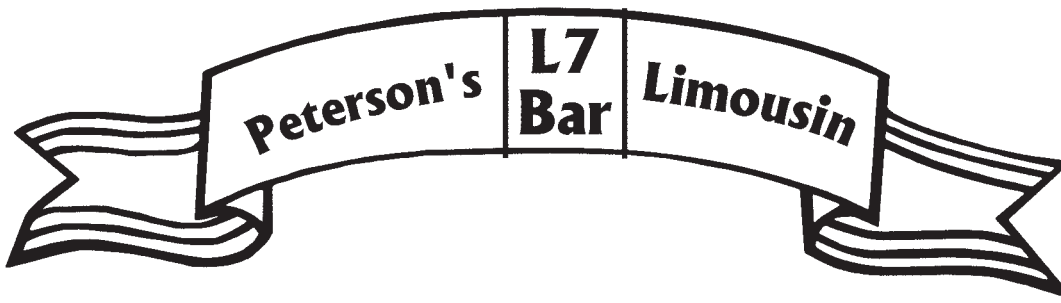
April 15, 2020



est. 1970

Pukwana, South Dakota





Friends,

Welcome to our 42nd Annual Production sale! We are honored to call you our friends and we thank you for your support. If you are new to our program thank you for your interest - if you have any questions please call, text, email, or stop in for a visit. We love to talk about our cattle, program and how our genetics can work for you.

2020 marks 50 years ago when our dream to raise higher yielding cattle began. That dream became a journey that we still travel today. In those years we've seen many articles about selecting for "this" trait or "that" trait but as we all know success in the cattle business depends on a lot of traits mixed together to come up with the ideal combination. We feel our roots in the commercial cattle industry help us make choices that keep the cattle working for us - not us working for them.

The final product must be tender and flavorful when it gets to the consumer's plate, but we still have to start with a calf that's born easy, gets up on their own, grows like a weed, and has a temperament that is easy to be around.

The cattle in this offering have sustained our family for 50 plus years. We feel they will work for you. We are blessed and motivated by the fact that so many cattle are sold to repeat customers. Customer satisfaction is a high priority so if you have a problem with a purchase let us know right away so we can make things right.


We have something for everyone in this offering. Red, black, Limousin, LimFlex, yearling, 18 month old and we have added new pedigrees for our repeat customers looking for something new.

We are so thankful for our long time customers that have been with us for years and we are always looking to find a new operation to add to our group of friends. Call Cade or Rod with any questions you might have.

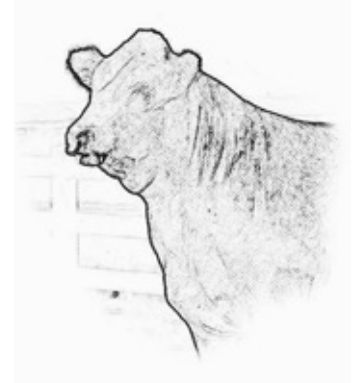
We make delivery swings to central locations in South Dakota and surrounding states and will work with you as best we can to get your purchases delivered. If you take your cattle sale day, we offer a \$50 per head discount. For volume purchasers, discounts start with a 5% discount on five to nine head and 10% discount on 10 head or more. If you plan to use a bull A.I., please let us know so we can pull DNA on the dam to meet NALF regulations. The cattle are fully guaranteed – buy with confidence!

Thanks again for your interest in our program. We look forward to seeing you April 15!

Kind regards,
The Peterson families

**One
Family**  **Committed
Program**

**...Built From the
Ground Up**





Peterson's **L7 Bar** Limousin
42nd ANNUAL

Limousin Production Sale
Wednesday, April 15, 2020 - 1 p.m.
at the ranch, Pukwana, SD

Selling 60 Lots
Yearling Bulls • 18-month-old Bulls • Open Heifers
All Polled • Red & Black

Location: At the ranch - **PLEASE NOTE NEW DIRECTIONS.**

Sale Day Phone: Barn: 605-894-4470

Cell Numbers: Rod - 605-730-4470, Cade - 605-730-0705,
 Chisum - 605-730-4214, or Quin - 918-625-2500

Sale Day Headquarters: AmericInn, Chamberlain, SD 605/234-0985

Sale Staff:

- C.K. Sonny Booth, Auctioneer 918/533-5587
- Mark Smith, Grassroots Genetics & Consulting 515/229-5227
- Kiley McKinna, MC Marketing 402/350-3447
- Donnie Leddy, Cattle Business Weekly 605/695-0113
- Merlyn Siegfried 605/868-9266
- Dean Summerbell, Heartland Limousin Ass'n. 612/963-3799
- Justin Dikoff, DV Auction 605/290-0635

Complimentary Lunch at 11:30!
Please bring this catalog with you to the sale.

Volume Discount: 5% on 5 to 9 bulls • 10% on 10 head or more
Visit us at PetersonsL7Bar.com or on Facebook for sale up-
dates, supplemental information and cattle videos.

Online bidding with DV Auction

Peterson's L7 Bar Limousin
Rod and Wendy Peterson & Family
34715 255th St.
Pukwana, SD 57370
email: cepetereson@midstatesd.net
petersonsL7bar.com

Directions to the ranch...

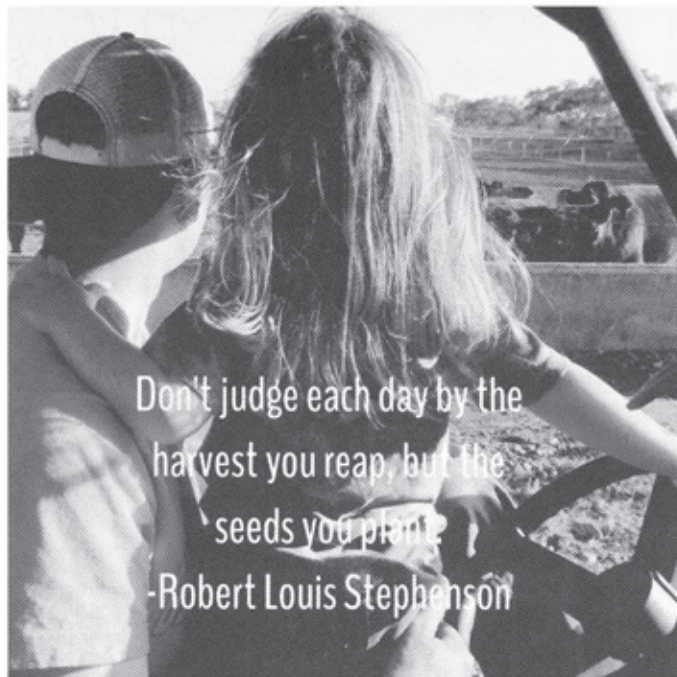
From Chamberlain Exit 265

- South 8 miles to 257th St., East on 257th for 3 miles to 347th Ave., North 2 miles on 347th to 255th St., turn at Ranch Sign.

From Pukwana Exit 272

- South 4.5 miles to 254th St., West on 254th St., 3 miles to 348th Ave., South 1 mile to 255th St., West 3/4 mile.

The cattle will be at the ranch south of Chamberlain. You are welcome to come and inspect the cattle anytime.



Don't judge each day by the
harvest you reap, but the
seeds you plant.
-Robert Louis Stephenson

How to analyze our performance information . . .

BW - weight of calf at birth

All the births were scored to calving ease with:

- A - Unassisted
- B - Some Help
- C - Mechanical Pull
- D - Caesarean
- E - Abnormal Presentation

WW - weaning weight - This is the weaning weight of the cattle adjusted to 205 days of age. WW is a good indication of early growth of a calf and milking ability of the mother.

YW - yearling weight - This is the yearling weight of the animal adjusted to 365 days of age with at least 150 days between the actual weaning weight and the time of recording the actual yearling weight.

WDA - weight per day of age - This is a tool for you to use in your selection because rate of growth is heritable. However, WDA could have a direct relation to how hard the animals are fed, but it also gives you an idea about growth potential especially when compared to weaning and yearling weight.

SC - scrotal measurement - Measured in centimeters. By Doc Walters, scrotal measurements are actual not adjusted.

Scan data on yearling bulls is adjusted to 365 days.

EPD'S were taken from NALF on March 6th, 2020.

Ask the experts

- Limousin cross calves work

"In these times when the margin on feeding cattle is so slim, the difference between YG 1-2 and YG 3 can be the difference in a profit or loss on a set of calves. We run a lot of Limousin influenced cattle through our barn and they consistently top the market and make our customers money."

*- Jackie Moore, Owner/Operator
Joplin Regional Stockyards, Missouri*

Moore is a lifelong cattleman who knows the ins and outs of the cattle industry. When limousin genetics come through his sale barn, particularly in a hybrid package, he can pretty much guarantee that those cattle are going to grow more efficiently and have a higher cutability than their earlier maturing counterparts. Day in and day out, Moore has the opportunity to see thousands of cattle marketed across the midwest, and he knows what type of investments are going to yield the highest return for his customers.

~ Reference Sires ~



WULFS XCELLSIOR X252X

WULFS SIRLOIN 3172S

COLE WULF HUNT
WULFS NEGOTIABLE 3172N
LVLS POLLED BLACK JACK
WULFS FAITH 6501F

WULFS MISSIVE 2258M

| EPDs | CED | BW | WW | YW | MK | SC | DOC | YG | CW | REA | Marb |
|------|------|----|-----|----|------|----|-------|----|------|-------|------|
| 13 | -0.7 | 72 | 108 | 13 | 0.30 | 13 | -0.94 | -6 | 1.44 | -0.17 | |



LFLC BIG COUNTRY 759B

WULF'S ZIPLOCK N922Z

WULF'S XTRACTOR X233X
PLND WINDMILL 922W
WULFS WALCOTT F711W
PLND LINDA 319

LFLC DAKOTA BELLE 759Y

| EPDs | CED | BW | WW | YW | MK | SC | DOC | YG | CW | REA | Marb |
|------|-----|----|-----|----|-----|----|-------|----|------|-------|------|
| 13 | 0.0 | 75 | 113 | 19 | .90 | 17 | -0.74 | 22 | 1.20 | -0.29 | |



L7 EXCHANGE RATE 7034E

TMCK CASH FLOW 247C

MAGS ALI
TMCK NINA 17X
WULFS XCELLSIOR X252X
MISS L7 913W

MISS L7 325A

| EPDs | CED | BW | WW | YW | MK | SC | DOC | YG | CW | REA | Marb |
|------|-----|----|-----|----|------|----|-------|----|------|-------|------|
| 10 | 1.2 | 84 | 140 | 18 | 1.06 | 15 | -0.38 | 23 | 1.07 | -0.05 | |



L7 CALVADOS 5035C

L7 XTREME 0067X

HC FINAL TIME 407
L7 CHILI PEPPER 080K
NORTHERN IMPROVEMENT 4480
MISS L7 908W

MISS L7 156Y

| EPDs | CED | BW | WW | YW | MK | SC | DOC | YG | CW | REA | Marb |
|------|-----|----|----|----|------|----|-------|----|------|-------|------|
| 9 | 0.9 | 57 | 85 | 16 | 0.40 | 13 | -0.67 | 4 | 1.10 | -0.14 | |



IVY'S BUBBA WATSON HTZ24B

IVY'S MARKSMAN HTZ 10Z

ROMN TUFF ENUFF 103T
IVY'S XPECT THE BEST 47X
AUTO DOLLAR GENERAL 122R
IVY POLLED NEAR PERFECT4N

IVY'S UNIQUE PERFECTION 3U

| EPDs | CED | BW | WW | YW | MK | SC | DOC | YG | CW | REA | Marb |
|------|------|----|----|----|------|----|-------|----|------|-------|------|
| 13 | -1.1 | 63 | 91 | 29 | 0.30 | 16 | -0.81 | 13 | 1.39 | -0.55 | |



L7 CORNER POCKET 5076C ET

WULFS UNLIMITED 5035U

HUNT MR JOCK 44J
WULFS REGALE 5035E
WULFS GUARDIAN 5074G
MISS L7 301N

MISS L7 510R

| EPDs | CED | BW | WW | YW | MK | SC | DOC | YG | CW | REA | Marb |
|------|-----|----|----|----|------|----|-------|----|------|-------|------|
| 9 | 1.6 | 59 | 80 | 23 | 0.25 | 15 | -0.88 | 5 | 1.47 | -0.67 | |



TMCK CASH FLOW 247C

WULFS ZANE X238Z

WULFS XCLUSIVE 2458X
WULFS MYRLENE 2332M
AHCC WESTWIND W544
EXLR JADE 309R

TMCK JADE 935Y

| EPDs | CED | BW | WW | YW | MK | SC | DOC | YG | CW | REA | Marb |
|------|-----|-----|-----|----|------|----|-------|----|------|------|------|
| 7 | 3.1 | 103 | 176 | 13 | 1.60 | 21 | -0.03 | 64 | 0.92 | 0.31 | |



LFLC DENVER 857D

WULF'S ZIPLOCK N922Z

WULF'S XTRACTOR X233X
PLND WINDMILL 922W
RUNL WALKING TALL 252W
LFLC DAKOTA BELLE 602U

LFLC ANNABELLE 857A

| EPDs | CED | BW | WW | YW | MK | SC | DOC | YG | CW | REA | Marb |
|------|-----|----|-----|----|------|----|-------|----|------|-------|------|
| 8 | 3.3 | 81 | 130 | 16 | 1.50 | 13 | -0.75 | 26 | 1.11 | -0.57 | |



L7 EIGHT BALL 7036E

IVY'S BUBBA WATSON HTZ24B

IVY'S MARKSMAN HTZ 10Z
IVYS UNIQUE PERFECTION 3U
MRL X-RATED 014X
MISS L7 625S

MISS L7 330A

| EPDs | CED | BW | WW | YW | MK | SC | DOC | YG | CW | REA | Marb |
|------|-----|----|-----|----|------|----|-------|----|------|-------|------|
| 13 | 1.3 | 71 | 105 | 20 | 0.55 | 14 | -0.69 | 17 | 1.22 | -0.60 | |



L7 BROKEN ARROW 4035B

WULFS XCELLSIOR X252X

WULFS SIRLOIN 3172S
WULFS MISSIVE 2258M
WULFS GUARDIAN 5074G
MISS L7 943W

MISS L7 106Y

| EPDs | CED | BW | WW | YW | MK | SC | DOC | YG | CW | REA | Marb |
|------|------|----|----|----|------|----|-------|----|------|-------|------|
| 12 | -1.3 | 52 | 86 | 23 | 0.60 | 15 | -0.74 | -1 | 1.34 | -0.28 | |



L7 DOMINO 6061D

S A V BRILLIANCE 8077

S A V BISMARCK 568Z
S A V BLACKCAP MAY 5270
WULFS YUKON TRAIL 8084Y
MISS L7 038X

MISS L7 419B

| EPDs | CED | BW | WW | YW | MK | SC | DOC | YG | CW | REA | Marb |
|------|-----|----|----|----|------|----|-------|----|------|-------|------|
| 13 | 1.1 | 59 | 94 | 25 | 1.04 | 12 | -0.29 | 21 | 0.73 | -0.01 | |



ICC PAY RAISE 4886

MILL COULEE PAY RAISE

BASIN PAYWEIGHT 107S
MILL COULEE BARBARA K 905
HOOVER DAM
M A R BLACKBIRD 8067

ICC BLACKBIRD 0739

| EPDs | CED | BW | WW | YW | MK | SC | DOC | YG | CW | REA | Marb |
|------|-----|----|----|----|------|----|-------|----|------|-------|------|
| 4 | 2.7 | 61 | 89 | 19 | 0.70 | 18 | -0.40 | 27 | 0.86 | -0.10 | |

~ 18-Month-old-Bulls ~

Lot 1

L7 8085F ET

LIM-FLEX, BULL (50/45.0)
HOMO POLLED (P-2)/HOMO BLACK (T)
09/15/2018 MEMP 8085F LFM2158922

S A V BRILLIANCE 8077
PVF INSIGHT 0129
PVF MISSIE 790
CJSL WINDFALL 9072W
L7 YUMA 122Y
MISS L7 418P

| BW: 90 | Adj WW: 781 | Adj YW: 1325 | | | | | | | | | |
|--------|-------------|--------------|-----|----|------|----|-------|----|------|-------|------|
| EPDs | CED | BW | WW | YW | MK | SC | DOC | YG | CW | REA | Marb |
| 10 | 1.2 | 68 | 103 | 24 | 1.25 | 12 | -0.44 | 44 | 1.34 | -0.11 | |

Here is a super stout Homo Polled and Black Lim-Flex bull. His full brother was a popular lot last year and he should be the same. Don't miss out on this powerful, high performing Insight son.



Lot 1

Lot 2

L7 8086F

LIM-FLEX, BULL (43/39.1)
DOUBLE POLLED/HOMO BLACK
09/13/2018 LSBL 8086F LFM2157121

L7 XTREME 0067X
L7 CALVADOS 5035C
MISS L7 156Y
S A V BRILLIANCE 8077
MISS L7 286Z
MISS L7 091X

| BW: 60 | Adj WW: 683 | Adj YW: 1252 | | | | | | | | | |
|--------|-------------|--------------|----|----|------|----|-------|----|------|------|------|
| EPDs | CED | BW | WW | YW | MK | SC | DOC | YG | CW | REA | Marb |
| 12 | -0.2 | 58 | 87 | 20 | 1.02 | 13 | -0.30 | 15 | 0.70 | 0.15 | |

A sporty, thickmade Calvados son that's Homo black. Small at birth and over 1200 at yearling.



Lot 2

Lot 3

L7 8092F

LIM-FLEX, BULL (37/33.3)
HOMO POLLED (P-3)/HOMO BLACK
09/10/2018 LSBL 8092F LFM2268695

SYDGEN 928 DESTINATION 5420
PRAIRIE PRIDE NEXT STEP 2036
FLYING V MISS PRIDE 426
WZRK ATLAS 8012A
L7 684D ET
PBRS UP TOWN GIRL 48U

| BW: 70 | Adj WW: 755 | Adj YW: 1316 | | | | | | | | | |
|--------|-------------|--------------|-----|----|----|----|-------|----|------|------|------|
| EPDs | CED | BW | WW | YW | MK | SC | DOC | YG | CW | REA | Marb |
| 14 | -0.1 | 71 | 117 | 18 | | 15 | -0.25 | 46 | 0.82 | 0.09 | |

A Homo Polled and Homo Black Next Step son. He had a 70 pound birth weight and posted over 1300 at yearling. He is an impressive high spread Lim-Flex



Lot 3

Lot 4

L7 8090F

PUREBRED, BULL (100/92.4)
DOUBLE POLLED/RED
09/02/2018 LSBL 8090F NPM2157125

WULF'S ZIPLOCK N922Z
LFLC BIG COUNTRY 759B
LFLC DAKOTA BELLE 759Y
WULFS XCELLSIOR X252X
MISS L7 591C ET
SVL POLLED AMBER LADY706X

| BW: 60 | Adj WW: 692 | Adj YW: 1224 | | | | | | | | | |
|--------|-------------|--------------|-----|----|------|----|-------|----|------|-------|------|
| EPDs | CED | BW | WW | YW | MK | SC | DOC | YG | CW | REA | Marb |
| 13 | 0.3 | 70 | 105 | 19 | 0.55 | 12 | -0.84 | 13 | 1.32 | -0.35 | |

A big topped, thickmade Big Country son.



Lot 4

Lot
5

L7 9038G

PUREBRED, BULL (100/90.2)
HOMO POLLED (T)/RED
03/02/2019 LSBL 9038G NPM2168409

WULF'S ZIPLOCK N922Z
LFLC BIG COUNTRY 759B
LFLC DAKOTA BELLE 759Y
WULFS XCELLSIOR X252X
MISS L7 502C
MISS L7 934W

| BW: 84 | | Adj WW: 755 | | | | Adj YW: 1358 | | | | | |
|--------|-----|-------------|-----|----|------|--------------|-------|----|------|-------|------|
| EPDs | CED | BW | WW | YW | MK | SC | DOC | YG | CW | REA | Marb |
| 12 | 1.2 | 76 | 113 | 21 | 0.65 | 13 | -0.81 | 18 | 1.34 | -0.31 | |

This Homo Polled Big Country son is a favorite around here. He just puts a lot of good things together for us: pounds, ruggedness and eye appeal. His Xcellsoir mother is becoming a favorite in the pasture. Selling full possession and 2/3 interest



Lot
6

L7 9036G

PUREBRED, BULL (100/88.9)
HOMO POLLED (T)/BLACK
02/27/2019 LSBL 9036G NPM2168405

IVY'S MARKSMAN HTZ 10Z
IVY'S BUBBA WATSON HTZ24B
IVYS UNIQUE PERFECTION 3U
WULFS UNLIMITED 5035U
MISS L7 545C
MISS L7 932W

| BW: 80 | | Adj WW: 755 | | | | Adj YW: 1301 | | | | | |
|--------|-----|-------------|----|----|------|--------------|-------|----|------|-------|------|
| EPDs | CED | BW | WW | YW | MK | SC | DOC | YG | CW | REA | Marb |
| 10 | 0.7 | 69 | 96 | 24 | 0.33 | 15 | -0.82 | 17 | 1.41 | -0.58 | |

This Homo Polled purebred was been popular since the grass turned green last spring. He is long geared, big butted, and soggy made. He is out of an Unlimited cow that goes back to the great 932. Be sure to look this performance bull up on sale day. Selling full possession and 2/3 interest



Lot
7

L7 9025G

LIM-FLEX, BULL (71/64.1)
HOMO POLLED /BLACK
02/26/2019 LSBL 9025G LFM2168394

MAGS ALI
TMCK CASH FLOW 247C
TMCK NINA 17X
WULFS XCELLSIOR X252X
MISS L7 407B
MISS L7 086X

| BW: 82 | | Adj WW: 667 | | | | Adj YW: 1343 | | | | | |
|--------|-----|-------------|-----|----|------|--------------|-------|----|------|-------|------|
| EPDs | CED | BW | WW | YW | MK | SC | DOC | YG | CW | REA | Marb |
| 9 | 1.1 | 75 | 123 | 21 | 1.19 | 15 | -0.43 | 29 | 1.09 | -0.03 | |

This Cash Flow son is bound to add pounds and eye appeal to your calf crop. If your looking to add some marbling to your herd consider him since her ratioed at 185. Don't miss out on this Homo Polled herd sire prospect. Selling full possession and 2/3 interest



~ Yearling Bulls ~

Lot 8

L7 9033G

PERCENTAGE, BULL (81/72.1)
HOMO POLLED (T)/HET BLACK (T)
03/14/2019 LSBL 9033G NXM2168402

AHCC BARN BURNER B907
CELL ENVISION 7023E
PBR5 ZSA ZSA 246Z
L7 ALL THE ANSWERS 3056A
MISS L7 567C
MISS L7 323A

| BW: 80 | Adj WW: 829 | Adj YW: 1336 | | | | | | | | | |
|--------|-------------|--------------|-----|----|------|----|-------|----|------|-------|------|
| EPDs | CED | BW | WW | YW | MK | SC | DOC | YG | CW | REA | Marb |
| 10 | 1.5 | 82 | 133 | 24 | 1.12 | 15 | -0.58 | 33 | 1.26 | -0.22 | |

A big numbered, chunky, performance bull out of Envision. Consider this Homo Polled bull if your wanting to add weight to your calves.



Lot 8

Lot 9

L7 9027G

PERCENTAGE, BULL (85/77.0)
HOMO POLLED/HOMO BLACK
03/07/2019 LSBL 9027G NXM2168396

TMCK CASH FLOW 247C
L7 EXCHANGE RATE 7034E
MISS L7 325A
WULFS YUKON TRAIL 8084Y
MISS L7 419B
MISS L7 038X

| BW: 82 | Adj WW: 698 | Adj YW: 1312 | | | | | | | | | |
|--------|-------------|--------------|-----|----|------|----|-------|----|------|-------|------|
| EPDs | CED | BW | WW | YW | MK | SC | DOC | YG | CW | REA | Marb |
| 12 | 1.1 | 70 | 112 | 23 | 0.62 | 14 | -0.54 | 21 | 1.03 | -0.30 | |

A stretchy made Exchange Rate son that tipped the scale at weaning and yearling. This Homo Polled and Homo Black bull has an excellent Yukon Trail mother.



Lot 9

Lot 10

L7 9028G

PUREBRED, BULL (100/88.9)
HOMO POLLED/BLACK
04/02/2019 LSBL 9028G NPM2168397

IVY'S BUBBA WATSON HTZ24B
L7 EIGHT BALL 7036E
MISS L7 330A
WULFS XCELLSIOR X252X
MISS L7 402B
MISS L7 611S

| BW: 88 | Adj WW: 753 | Adj YW: 1327 | | | | | | | | | |
|--------|-------------|--------------|----|----|------|----|-------|----|------|-------|------|
| EPDs | CED | BW | WW | YW | MK | SC | DOC | YG | CW | REA | Marb |
| 10 | 1.4 | 68 | 97 | 21 | 0.49 | 14 | -0.78 | 10 | 1.27 | -0.46 | |

Here is a growthy, Homo Polled Eight Ball son out of a nice Xcellsior female.



Lot 10

Lot
11

L7 9014G

PUREBRED, BULL (100/88.8)
HET POLLED (T)/BLACK
03/02/2019 LSBL 9014G NPM2168385

WULFS SIRLOIN 3172S
WULFS XCELLSIOR X252X
WULFS MISSIVE 2258M
WULFS UNLIMITED 5035U
MISS L7 209Z
MISS L7 425P

| BW: 90 | | Adj WW: 736 | | | | Adj YW: 1232 | | | | | |
|--------|-----|-------------|-----|----|------|--------------|-------|----|------|-------|------|
| EPDs | CED | BW | WW | YW | MK | SC | DOC | YG | CW | REA | Marb |
| 8 | 2.0 | 73 | 106 | 18 | 0.20 | 13 | -0.86 | 11 | 1.39 | -0.42 | |

This Xcellsior son has the length and thickness that the commercial cattle man loves. An excellent performance bull.



Lot
12

L7 912G

PUREBRED, BULL (87/78.5)
SCURRED/BLACK
03/09/2019 LSBL 912G NPM2168470

L7 XTREME 0067X
L7 CALVADOS 5035C
MISS L7 156Y
L7 ZERO HOUR 2066Z
MISS L7 527C
MISS L7 144Y

| BW: 86 | | Adj WW: 737 | | | | Adj YW: 1272 | | | | | |
|--------|-----|-------------|----|----|------|--------------|-------|----|------|-------|------|
| EPDs | CED | BW | WW | YW | MK | SC | DOC | YG | CW | REA | Marb |
| 9 | 1.5 | 63 | 93 | 19 | 0.37 | 14 | -0.76 | 9 | 1.27 | -0.31 | |

A thickmade Calvados son out of a good Zero Hour female. Over 700 at weaning and over 1200 at yearling. He is a dandy!



Lot
13

L7 9013G

LIM-FLEX, BULL (75/66.3)
HOMO POLLED (T)/BLACK
03/20/2019 LSBL 9013G LFM2168384

EF XCESSIVE FORCE
ALTER EGO
CJSL TEQUILA SUNRISE 7003
CJSL WINDFALL 9072W
L7 RED VELVET 277Z
MISS L7 943W

| BW: 90 | | Adj WW: 794 | | | | Adj YW: 1278 | | | | | |
|--------|-----|-------------|----|----|------|--------------|-------|----|------|-------|------|
| EPDs | CED | BW | WW | YW | MK | SC | DOC | YG | CW | REA | Marb |
| 11 | 1.3 | 65 | 94 | 22 | 1.12 | 16 | -0.45 | 22 | 0.89 | -0.25 | |

A stylish Alter Ego son with plenty of rib and power. A nice Homo Polled Lim-Flex bull



Lot
14

L7 9026G

LIM-FLEX, BULL (71/64.1)
HET POLLED (T)/BLACK
02/26/2019 LSBL 9026G LFM2168395

MAGS ALI
TMCK CASH FLOW 247C
TMCK NINA 17X
WULFS XCELLSIOR X252X
L7 BREEZY 413B
MISS L7 137Y

| BW: 86 | | Adj WW: 627 | | | | Adj YW: 1134 | | | | | |
|--------|-----|-------------|-----|----|------|--------------|-------|----|------|-------|------|
| EPDs | CED | BW | WW | YW | MK | SC | DOC | YG | CW | REA | Marb |
| 7 | 2.6 | 83 | 134 | 17 | 0.90 | 17 | -0.47 | 35 | 1.22 | -0.08 | |

A stout Cash Flow son with big numbers and out of Breezy. Don't miss out!



Lot 14

Lot
15

L7 9020G

PUREBRED, BULL (88/80.3)
HOMO POLLED (T)/HOMO BLACK (T)
03/07/2019 LSBL 9020G NPM2168389

TMCK ARCHITECT 031A
TMCK DARTMOUTH 360D
TMCK518Z
WULFS WARBONNET 6254W
MISS L7 311A
MISS L7 824U

| BW: 90 | | Adj WW: 671 | | | | Adj YW: 1178 | | | | | |
|--------|-----|-------------|-----|----|------|--------------|-------|----|------|-------|------|
| EPDs | CED | BW | WW | YW | MK | SC | DOC | YG | CW | REA | Marb |
| 12 | 1.9 | 72 | 113 | 23 | 0.40 | 12 | -0.62 | 25 | 1.14 | -0.42 | |

This Dartmouth son is thickmade and soggy all in a Homo Polled and Homo black package. 311 had another good one.



Lot 15

Lot
16

L7 9016G

LIM-FLEX, BULL (67/60.4)
POLLED/DOUBLE BLACK
03/08/2019 LSBL 9016G LFM2168387

SILVEIRAS S SIS GQ 2353
FC EAGLE EYE 768E ET
CYWD ZESTY 22Z
WULFS GUARDIAN 5074G
MISS L7 300A
MISS L7 110Y

| BW: 92 | | Adj WW: 715 | | | | Adj YW: 1149 | | | | | |
|--------|-----|-------------|----|----|------|--------------|-------|----|------|-------|------|
| EPDs | CED | BW | WW | YW | MK | SC | DOC | YG | CW | REA | Marb |
| 9 | 1.9 | 61 | 92 | 22 | 0.73 | 11 | -0.47 | 5 | 0.74 | -0.09 | |

A good looking Lim-Flex bull at weighed over 700 at weaning. Out of one of the many good Guardian cows around here.



Lot 16

Lot 17**L7 9000G**

PUREBRED, BULL (100/90.7)
DOUBLE POLLED/RED
03/02/2019 LSBL 9000G NPM2168371

WULF'S ZIPLOCK N922Z
LFLC BIG COUNTRY 759B
LFLC DAKOTA BELLE 759Y
LVLS SECRET WEAPON 4408K
MISS L7 934W
MISS L7 009K

| BW: 80 | Adj WW: 638 | | | Adj YW: 1145 | | | | | | | |
|--------|-------------|-----|----|--------------|----|------|-----|-------|----|------|-------|
| EPDs | CED | BW | WW | YW | MK | SC | DOC | YG | CW | REA | Marb |
| | 13 | 0.6 | 61 | 88 | 25 | 0.70 | 12 | -0.77 | 14 | 1.17 | -0.39 |

Long made Big Country son out of a solid Secret Weapon cow

Lot 20**L7 9004G**

PUREBRED, BULL (93/83.0)
SCURRED/DOUBLE BLACK
03/09/2019 LSBL 9004G NPM2168375

AHCC BARN BURNER B907
CELL ENVISION 7023E
PBRs ZSA ZSA 246Z
L7 CABANA 6072S
MISS L7 038X
MISS L7 160L

| BW: 88 | Adj WW: 660 | | | Adj YW: 1296 | | | | | | | |
|--------|-------------|-----|----|--------------|----|------|-----|-------|----|------|-------|
| EPDs | CED | BW | WW | YW | MK | SC | DOC | YG | CW | REA | Marb |
| | 8 | 2.7 | 72 | 121 | 18 | 0.88 | 14 | -0.64 | 32 | 1.18 | -0.41 |

A high powered Envision son going back to a solid cow family.

Lot 18**L7 9002G**

PUREBRED, BULL (100/89.8)
DOUBLE POLLED/DOUBLE BLACK
03/07/2019 LSBL 9002G NPM2168373

IVY'S BUBBA WATSON HTZ24B
L7 EIGHT BALL 7036E
MISS L7 330A
L7 RED PEPPER 3001N
MISS L7 026X
MISS L7 301N

| BW: 80 | Adj WW: 624 | | | Adj YW: 1075 | | | | | | | |
|--------|-------------|-----|----|--------------|----|------|-----|-------|----|------|-------|
| EPDs | CED | BW | WW | YW | MK | SC | DOC | YG | CW | REA | Marb |
| | 11 | 0.7 | 53 | 74 | 25 | 0.42 | 13 | -0.73 | 6 | 1.08 | -0.53 |

A moderate, thick made bull



Sire of Lot 18

Lot 21**L7 9005G**

LIM-FLEX, BULL (68/60.5)
HOMO POLLED (T)/HOMO BLACK (T)
03/02/2019 LSBL 9005G LFM2168376

AHCC BARN BURNER B907
CELL ENVISION 7023E
PBRs ZSA ZSA 246Z
RITO 616 OF 4B20 6807
MISS L7 048X
MISS L7 823U

| BW: 82 | Adj WW: 645 | | | Adj YW: 1293 | | | | | | | |
|--------|-------------|-----|----|--------------|----|------|-----|-------|----|------|-------|
| EPDs | CED | BW | WW | YW | MK | SC | DOC | YG | CW | REA | Marb |
| | 11 | 0.0 | 68 | 114 | 21 | 1.02 | 16 | -0.45 | 27 | 0.98 | -0.09 |

Soggy, long patterned, Homo Polled, Homo Black bull with lots of performance and out of a cow that has had her share of sale highlights

Lot 22**L7 9006G**

LIM-FLEX, BULL (75/67.7)
HOMO POLLED (T)/HET BLACK (T)
03/08/2019 LSBL 9006G LFM2168377

WULF'S ZIPLOCK N922Z
LFLC DENVER 857D
LFLC ANNABELLE 857A
D C C RITO PRIME 115
MISS L7 056X
MISS L7 722T

| BW: 92 | Adj WW: 787 | | | Adj YW: 1300 | | | | | | | |
|--------|-------------|-----|----|--------------|----|------|-----|-------|----|------|-------|
| EPDs | CED | BW | WW | YW | MK | SC | DOC | YG | CW | REA | Marb |
| | 7 | 3.1 | 77 | 121 | 18 | 1.12 | 9 | -0.56 | 27 | 1.01 | -0.27 |

Stout Denver bull that brings a lot of power to the table. Don't miss out on this Homo Polled Lim-Flex 75

Lot 19**L7 9003G**

LIM-FLEX, BULL (75/68.3)
DOUBLE POLLED/BLACK
02/28/2019 LSBL 9003G LFM2168374

WULF'S ZIPLOCK N922Z
LFLC BIG COUNTRY 759B
LFLC DAKOTA BELLE 759Y
D C C RITO PRIME 115
MISS L7 055X
MISS L7 719T

| BW: 80 | Adj WW: 760 | | | Adj YW: 1301 | | | | | | | |
|--------|-------------|-----|----|--------------|----|------|-----|-------|----|------|-------|
| EPDs | CED | BW | WW | YW | MK | SC | DOC | YG | CW | REA | Marb |
| | 12 | 0.1 | 72 | 110 | 20 | 0.71 | 13 | -0.57 | 25 | 1.07 | -0.13 |

Here is a Big Country son that is ready for the big country. He is long geared with lots of performance.

Lot 23**L7 9007G**

LIM-FLEX, BULL (60/54.5)
DOUBLE POLLED/DOUBLE BLACK
03/08/2019 LSBL 9007G LFM2168378

TMCK CASH FLOW 247C
L7 EXCHANGE RATE 7034E
MISS L7 325A
DUFF STANDOUT 785
MISS L7 057X
MISS L7 FROSTED 824H

| BW: 80 | Adj WW: 611 | | | Adj YW: 1084 | | | | | | | |
|--------|-------------|-----|----|--------------|----|------|-----|-------|----|------|-------|
| EPDs | CED | BW | WW | YW | MK | SC | DOC | YG | CW | REA | Marb |
| | 11 | 0.3 | 59 | 92 | 19 | 0.76 | 13 | -0.36 | 13 | 0.76 | -0.04 |

Deep sided Exchange Rate son

Lot 24**L7 9009G**

PUREBRED, BULL (100/90.6)
 DOUBLE POLLED/RED
 03/22/2019 LSBL 9009G NPM2168380

WULF'S ZIPLOCK N922Z
 LFLC BIG COUNTRY 759B
 LFLC DAKOTA BELLE 759Y
 WULFS SPACE SHIP 3223S
 MISS L7 111Y
 MISS L7 301N

| BW: 89 | Adj WW: 583 | Adj YW: 1090 | | | | | | | | | |
|--------|-------------|--------------|----|----|------|----|-------|----|------|-------|------|
| EPDs | CED | BW | WW | YW | MK | SC | DOC | YG | CW | REA | Marb |
| 10 | 1.2 | 54 | 79 | 23 | 1.10 | 12 | -0.74 | 6 | 1.04 | -0.39 | |

A moderate made, deep sided Big Country son

Lot 28**L7 9022G**

PERCENTAGE, BULL (81/72.5)
 DOUBLE POLLED/BLACK
 04/01/2019 LSBL 9022G NXM2168391

WULFS XCELLSIOR X252X
 L7 BROKEN ARROW 4035B
 MISS L7 106Y
 WULFS UNLIMITED 5035U
 MISS L7 318A
 MISS L7 875U

| BW: 94 | Adj WW: 671 | Adj YW: 1217 | | | | | | | | | |
|--------|-------------|--------------|----|----|------|----|-------|----|------|-------|------|
| EPDs | CED | BW | WW | YW | MK | SC | DOC | YG | CW | REA | Marb |
| 9 | 2.0 | 61 | 92 | 18 | 0.55 | 12 | -0.69 | 10 | 1.21 | -0.34 | |

Stout, deep sided bull out of a solid Unlimited female

Lot 25**L7 9010G**

LIM-FLEX, BULL (75/67.0)
 DOUBLE POLLED/BLACK
 03/24/2019 LSBL 9010G LFM2168381

WULFS UNLIMITED 5035U
 L7 CORNER POCKET 5076C ET
 MISS L7 510R
 NORTHERN IMPROVEMENT 4480
 MISS L7 156Y
 MISS L7 908W

| BW: 82 | Adj WW: 737 | Adj YW: 1250 | | | | | | | | | |
|--------|-------------|--------------|----|----|------|----|-------|----|------|-------|------|
| EPDs | CED | BW | WW | YW | MK | SC | DOC | YG | CW | REA | Marb |
| 11 | 0.2 | 58 | 83 | 22 | 0.30 | 14 | -0.64 | 10 | 1.07 | -0.33 | |

Growthy Corner Pocket son that is deep sided, and long patterned. Real nice Lim-Flex bull out of Calvados mother

Lot 29**L7 9029G**

PUREBRED, BULL (87/78.6)
 DOUBLE POLLED/DOUBLE BLACK
 04/13/2019 LSBL 9029G NPM2168398

IVY'S BUBBA WATSON HTZ24B
 L7 EIGHT BALL 7036E
 MISS L7 330A
 WULFS YUKON TRAIL 8084Y
 MISS L7 420B
 MISS L7 056X

| BW: 88 | Adj WW: 689 | Adj YW: 1140 | | | | | | | | | |
|--------|-------------|--------------|----|----|------|----|-------|----|------|-------|------|
| EPDs | CED | BW | WW | YW | MK | SC | DOC | YG | CW | REA | Marb |
| 10 | 1.6 | 60 | 90 | 25 | 0.44 | 13 | -0.60 | 15 | 1.00 | -0.40 | |

Long, heavy muscled Eight Ball out of a good Yukon Trail cow

Lot 26**L7 9012G**

PUREBRED, BULL (100/90.4)
 POLLED/RED
 03/09/2019 LSBL 9012G NPM2168383

WULF'S ZIPLOCK N922Z
 LFLC BIG COUNTRY 759B
 LFLC DAKOTA BELLE 759Y
 L7 RED PEPPER 3001N
 MISS L7 220Z
 MISS L7 616S

| BW: 90 | Adj WW: 718 | Adj YW: 1338 | | | | | | | | | |
|--------|-------------|--------------|-----|----|------|----|-------|----|------|-------|------|
| EPDs | CED | BW | WW | YW | MK | SC | DOC | YG | CW | REA | Marb |
| 10 | 1.8 | 68 | 101 | 21 | 0.50 | 14 | -0.83 | 13 | 1.30 | -0.46 | |

Another high performing Big County son. His Red Pepper mother can raise them big and stout.

Lot 30**L7 9030G**

LIM-FLEX, BULL (60/53.6)
 DOUBLE POLLED/DOUBLE BLACK
 04/26/2019 LSBL 9030G LFM2168399

TMCK CASH FLOW 247C
 L7 EXCHANGE RATE 7034E
 MISS L7 325A
 S A V BRILLIANCE 8077
 L7 BANDITA 431B
 MISS L7 211Z

| BW: 80 | Adj WW: 705 | Adj YW: 1200 | | | | | | | | | |
|--------|-------------|--------------|-----|----|------|----|-------|----|------|-------|------|
| EPDs | CED | BW | WW | YW | MK | SC | DOC | YG | CW | REA | Marb |
| 11 | 0.6 | 73 | 117 | 22 | 1.13 | 14 | -0.37 | 26 | 1.02 | -0.06 | |

This Exchange Rate son was weaned off heavy from his Brilliance mother. He is moderate, thick made, and soggy in his design

Lot 27**L7 9021G**

PERCENTAGE, BULL (81/72.2)
 DOUBLE POLLED/RED
 03/30/2019 LSBL 9021G NXM2168390

WULFS XCELLSIOR X252X
 L7 BROKEN ARROW 4035B
 MISS L7 106Y
 WULFS UNLIMITED 5035U
 MISS L7 319A
 MISS L7 876U

| BW: 80 | Adj WW: 643 | Adj YW: 1116 | | | | | | | | | |
|--------|-------------|--------------|----|----|------|----|-------|----|------|-------|------|
| EPDs | CED | BW | WW | YW | MK | SC | DOC | YG | CW | REA | Marb |
| 12 | -0.3 | 52 | 81 | 17 | 0.59 | 13 | -0.64 | 9 | 1.05 | -0.30 | |

A moderate, thick, soggy made Broken Arrow. His sire group has been popular over the years



Sire of Lot 30

Lot
31

L7 9034G

LIM-FLEX, BULL (62/55.9)
HOMO POLLED (T)/HOMO BLACK (T)
03/15/2019 LSBL 9034G LFM2168403

MAGS ALI
TMCK CASH FLOW 247C
TMCK NINA 17X
WULFS XCELLSIOR X252X
MISS L7 510C
MISS L7 205Z

| BW: 80 | Adj WW: 665 | Adj YW: 1251 | | | | | | | | | |
|--------|-------------|--------------|-----|----|------|----|-------|----|------|------|------|
| EPDs | CED | BW | WW | YW | MK | SC | DOC | YG | CW | REA | Marb |
| 10 | 0.8 | 75 | 121 | 18 | 0.96 | 17 | -0.37 | 26 | 1.03 | 0.03 | |

Big numbered, Homo Polled, Homo Black Lim-Flex bull with the length and performance that ranchers appreciate.

Lot
35

L7 9043G

PUREBRED, BULL (88/77.1)
DOUBLE POLLED/BLACK
03/15/2019 LSBL 9043G NPM2168413

TMCK ARCHITECT 031A
TMCK DARTMOUTH 360D
TMCK518Z
L7 BROKEN ARROW 4035B
MISS L7 648D
MISS L7 010X

| BW: 62 | Adj WW: 732 | Adj YW: 1047 | | | | | | | | | |
|--------|-------------|--------------|-----|----|------|----|-------|----|------|-------|------|
| EPDs | CED | BW | WW | YW | MK | SC | DOC | YG | CW | REA | Marb |
| 15 | -2.0 | 65 | 101 | 23 | 0.71 | 12 | -0.62 | 21 | 1.16 | -0.27 | |

Moderate, thick made Dartmouth son that came small and weaned off at 732. He has an excellent Broken Arrow mother that goes back to Chilipepper

Lot
32

L7 9039G

PUREBRED, BULL (93/83.5)
DOUBLE POLLED/RED
04/17/2019 LSBL 9039G NPM2168410

WULFS XCELLSIOR X252X
L7 BROKEN ARROW 4035B
MISS L7 106Y
WULFS UNLIMITED 5035U
MISS L7 541C
MISS L7 425P

| BW: 75 | Adj WW: 692 | Adj YW: 1160 | | | | | | | | | |
|--------|-------------|--------------|----|----|------|----|-------|----|------|-------|------|
| EPDs | CED | BW | WW | YW | MK | SC | DOC | YG | CW | REA | Marb |
| 10 | -0.3 | 54 | 81 | 24 | 0.38 | 14 | -0.80 | 6 | 1.29 | -0.47 | |

A moderate, stout Broken Arrow bull that was small at birth and weaned off big

Lot
36

L7 9044G

PUREBRED, BULL (87/78.4)
HOMO POLLED (T)/HET BLACK (T)
03/15/2019 LSBL 9044G NPM2168414

WULF'S ZIPLOCK N922Z
LFLC DENVER 857D
LFLC ANNABELLE 857A
WULFS XCELLSIOR X252X
MISS L7 610D
MISS L7 761T

| BW: 80 | Adj WW: 654 | Adj YW: 1155 | | | | | | | | | |
|--------|-------------|--------------|----|----|------|----|-------|----|------|-------|------|
| EPDs | CED | BW | WW | YW | MK | SC | DOC | YG | CW | REA | Marb |
| 10 | 1.2 | 61 | 95 | 18 | 1.02 | 12 | -0.71 | 8 | 0.99 | -0.33 | |

Long patterned, deep sided, Homo Polled Denver son

Lot
33

L7 9040G

PUREBRED, BULL (100/89.3)
DOUBLE POLLED/RED
04/18/2019 LSBL 9040G NPM2168411

WULFS UNLIMITED 5035U
L7 CORNER POCKET 5076C ET
MISS L7 510R
WULFS YUKON TRAIL 8084Y
MISS L7 515C
MISS L7 824U

| BW: 82 | Adj WW: 655 | Adj YW: 1122 | | | | | | | | | |
|--------|-------------|--------------|----|----|------|----|-------|----|------|-------|------|
| EPDs | CED | BW | WW | YW | MK | SC | DOC | YG | CW | REA | Marb |
| 9 | 1.6 | 55 | 78 | 26 | 0.25 | 14 | -0.83 | 5 | 1.22 | -0.61 | |

Solid red bull out of a real productive Yukon Trail cow.

Lot
37

L7 9045G

PUREBRED, BULL (87/76.5)
DOUBLE POLLED/RED
03/18/2019 LSBL 9045G NPM2168415

EF XCESSIVE FORCE
ALTER EGO
CJSL TEQUILA SUNRISE 7003
WULFS XCELLSIOR X252X
MISS L7 621D
MISS L7 211Z

| BW: 80 | Adj WW: 663 | Adj YW: 1181 | | | | | | | | | |
|--------|-------------|--------------|----|----|------|----|-------|----|------|-------|------|
| EPDs | CED | BW | WW | YW | MK | SC | DOC | YG | CW | REA | Marb |
| 13 | -0.1 | 63 | 90 | 15 | 0.90 | 16 | -0.61 | 9 | 1.01 | -0.36 | |

Solid red bull here. Moderate, thick, and soggy in his design. His mother is a full sister to Candy Cane.

Lot
34

L7 9041G

LIM-FLEX, BULL (75/67.1)
DOUBLE POLLED/DOUBLE BLACK
04/19/2019 LSBL 9041G LFM2269703

IVY'S BUBBA WATSON HTZ24B
L7 EIGHT BALL 7036E
MISS L7 330A
L7 ALL THE ANSWERS 3056A
MISS L7 539C
MISS L7 342A

| BW: 72 | Adj WW: 704 | Adj YW: 1162 | | | | | | | | | |
|--------|-------------|--------------|----|----|------|----|-------|----|------|-------|------|
| EPDs | CED | BW | WW | YW | MK | SC | DOC | YG | CW | REA | Marb |
| 14 | -0.9 | 60 | 89 | 24 | 1.04 | 12 | -0.48 | 17 | 0.89 | -0.26 | |

A smooth, deep sided son of Eight Ball that weaned off over 700



Lot
38

L7 9046G

PUREBRED, BULL (100/90.3)
DOUBLE POLLED/RED
03/23/2019 LSBL 9046G NPM2168416

WULF'S ZIPLOCK N922Z
LFLC BIG COUNTRY 759B
LFLC DAKOTA BELLE 759Y
WULFS XCELLSIOR X252X
MISS L7 607D
MISS L7 714T

| BW: 85 | Adj WW: 769 | Adj YW: 1259 | | | | | | | | | |
|--------|-------------|--------------|-----|----|------|----|-------|----|------|-------|------|
| EPDs | CED | BW | WW | YW | MK | SC | DOC | YG | CW | REA | Marb |
| 11 | 1.1 | 74 | 111 | 21 | 0.55 | 13 | -0.82 | 16 | 1.30 | -0.32 | |

Stout, high performing red bull

Lot
41

L7 9050G

PUREBRED, BULL (100/89.3)
DOUBLE POLLED/RED
04/14/2019 LSBL 9050G NPM2168420

WULFS UNLIMITED 5035U
L7 CORNER POCKET 5076C ET
MISS L7 510R
L7 ZERO HOUR 2066Z
MISS L7 642D
MISS L7 221Z

| BW: 88 | Adj WW: 715 | Adj YW: 1149 | | | | | | | | | |
|--------|-------------|--------------|----|----|------|----|-------|----|------|-------|------|
| EPDs | CED | BW | WW | YW | MK | SC | DOC | YG | CW | REA | Marb |
| 7 | 2.7 | 63 | 89 | 20 | 0.26 | 12 | -0.89 | 4 | 1.41 | -0.57 | |

Moderate and chunky red bull and a solid cow family

Lot
39

L7 9047G

PUREBRED, BULL (87/78.0)
DOUBLE POLLED/DOUBLE BLACK
03/23/2019 LSBL 9047G NPM2168417

L7 XTREME 0067X
L7 CALVADOS 5035C
MISS L7 156Y
WULFS UNLIMITED 5035U
MISS L7 637D
MISS L7 850U

| BW: 93 | Adj WW: 620 | Adj YW: 1121 | | | | | | | | | |
|--------|-------------|--------------|----|----|------|----|-------|----|------|-------|------|
| EPDs | CED | BW | WW | YW | MK | SC | DOC | YG | CW | REA | Marb |
| 7 | 2.5 | 56 | 77 | 18 | 0.41 | 13 | -0.76 | 3 | 1.18 | -0.39 | |

Moderate, soggy, good looking Calvados son

Lot
42

L7 9053G

PUREBRED, BULL (87/77.7)
DOUBLE POLLED/RED
04/22/2019 LSBL 9053G NPM2168423

WULFS UNLIMITED 5035U
L7 CORNER POCKET 5076C ET
MISS L7 510R
WULFS XCELLSIOR X252X
MISS L7 611D
MISS L7 870U

| BW: 82 | Adj WW: 650 | Adj YW: 1145 | | | | | | | | | |
|--------|-------------|--------------|----|----|------|----|-------|----|------|-------|------|
| EPDs | CED | BW | WW | YW | MK | SC | DOC | YG | CW | REA | Marb |
| 10 | 1.2 | 58 | 84 | 20 | 0.40 | 13 | -0.78 | 1 | 1.19 | -0.38 | |

Muscular Corner Pocket bull out of an up and coming female

Lot
43

L7 9055G

LIM-FLEX, BULL (62/56.1)
DOUBLE POLLED/BLACK
03/25/2019 LSBL 9055G LFM2168425

S A V BRILLIANCE 8077
L7 DOMINO 6061D
MISS L7 419B
IVY'S BUBBA WATSON HTZ24B
MISS L7 713E
MISS L7 870U

| BW: 85 | Adj WW: 640 | Adj YW: 1164 | | | | | | | | | |
|--------|-------------|--------------|----|----|------|----|-------|----|------|-------|------|
| EPDs | CED | BW | WW | YW | MK | SC | DOC | YG | CW | REA | Marb |
| 12 | 1.9 | 61 | 95 | 23 | 0.79 | 13 | -0.43 | 16 | 0.85 | -0.14 | |

Soggy Domino son that's moderate in his design and out of a beautiful Bubba cow that is one to watched for the older she gets



Sire of Lot 39

Lot
40

L7 9048G

PUREBRED, BULL (87/78.0)
HOMO POLLED (T)/HOMO BLACK (T)
03/24/2019 LSBL 9048G NPM2168418

L7 XTREME 0067X
L7 CALVADOS 5035C
MISS L7 156Y
WULFS UNLIMITED 5035U
MISS L7 638D
MISS L7 026X

| BW: 84 | Adj WW: 725 | Adj YW: 1192 | | | | | | | | | |
|--------|-------------|--------------|----|----|------|----|-------|----|------|-------|------|
| EPDs | CED | BW | WW | YW | MK | SC | DOC | YG | CW | REA | Marb |
| 8 | 2.4 | 65 | 93 | 20 | 0.41 | 13 | -0.73 | 14 | 1.26 | -0.37 | |

We have the 301 cow family and Calvados involved in lot 40. Don't miss on this Homo Polled and Homo Black bull



Lot
44

L7 9056G

LIM-FLEX, BULL (75/67.5)
DOUBLE POLLED/BLACK
03/26/2019 LSBL 9056G LFM2168426

S A V BRILLIANCE 8077
L7 DOMINO 6061D
MISS L7 419B
IVY'S BUBBA WATSON HTZ24B
MISS L7 714E
MISS L7 920W

| BW: 74 | Adj WW: 686 | Adj YW: 1142 | | | | | | | | | |
|--------|-------------|--------------|----|----|------|----|-------|----|------|-------|------|
| EPDs | CED | BW | WW | YW | MK | SC | DOC | YG | CW | REA | Marb |
| 12 | 0.9 | 60 | 92 | 25 | 0.82 | 13 | -0.53 | 17 | 1.00 | -0.24 | |

This Lim-Flex was small at birth and weaned off heavy. His young Bubba Watson mother is a good one

Lot
46

L7 9058G

LIM-FLEX, BULL (37/33.8)
DOUBLE POLLED/BLACK
02/22/2019 LSBL 9058G LFM2168428

SYDGEN 928 DESTINATION 5420
PRAIRIE PRIDE NEXT STEP 2036
FLYING V MISS PRIDE 426
L7 BELLAGIO 4015B
MISS L7 733E
MISS L7 574C

| BW: 65 | Adj WW: 676 | Adj YW: 1205 | | | | | | | | | |
|--------|-------------|--------------|-----|----|----|----|-------|----|------|------|------|
| EPDs | CED | BW | WW | YW | MK | SC | DOC | YG | CW | REA | Marb |
| 15 | -1.3 | 74 | 125 | 21 | | 13 | -0.29 | 48 | 0.97 | 0.11 | |

Another big spread Next Step son. 65 pounds at birth and 1205 yearling. Out of a real nice Bellagio cow.

Lot
45

L7 9057G

LIM-FLEX, BULL (50/44.3)
DOUBLE POLLED/HOMO BLACK (T)
02/22/2019 LSBL 9057G LFM2168427

SYDGEN 928 DESTINATION 5420
PRAIRIE PRIDE NEXT STEP 2036
FLYING V MISS PRIDE 426
WULFS UNLIMITED 5035U
MISS L7 718E
MISS L7 118Y

| BW: 65 | Adj WW: 682 | Adj YW: 1200 | | | | | | | | | |
|--------|-------------|--------------|-----|----|----|----|-------|----|------|-------|------|
| EPDs | CED | BW | WW | YW | MK | SC | DOC | YG | CW | REA | Marb |
| 14 | -1.5 | 67 | 111 | 23 | | 12 | -0.40 | 44 | 1.08 | -0.11 | |

A Homo Black Lim-Flex that's deep sided and thick. Big spread from birth to yearling.

Lot
47

L7 9059G

LIM-FLEX, BULL (37/34.1)
HOMO POLLED (T)/BLACK
02/22/2019 LSBL 9059G LFM2168429

SYDGEN 928 DESTINATION 5420
PRAIRIE PRIDE NEXT STEP 2036
FLYING V MISS PRIDE 426
AHCC COWBOY KIND C595 ET
MISS L7 726E
MISS L7 025X

| BW: 80 | Adj WW: 721 | Adj YW: 1341 | | | | | | | | | |
|--------|-------------|--------------|-----|----|----|----|-------|----|------|-------|------|
| EPDs | CED | BW | WW | YW | MK | SC | DOC | YG | CW | REA | Marb |
| 13 | 0.4 | 76 | 128 | 23 | | 11 | -0.26 | 50 | 0.89 | -0.02 | |

Homo Polled Lim-Flex with gobs of performance. This bull brings a lot to the table.



Lot
48

L7 9060G

LIM-FLEX, BULL (31/28.0)
HET POLLED (T)/HOMO BLACK (T)
02/24/2019 LSBL 9060G LFM2168430

SYDGEN 928 DESTINATION 5420
PRAIRIE PRIDE NEXT STEP 2036
FLYING V MISS PRIDE 426
L7 ALL THE ANSWERS 3056A
MISS L7 768E
MISS L7 562C

| BW: 68 | Adj WW: 689 | Adj YW: 1269 | | | | | | | | | |
|--------|-------------|--------------|-----|----|----|----|-------|----|------|------|------|
| EPDs | CED | BW | WW | YW | MK | SC | DOC | YG | CW | REA | Marb |
| 15 | -1.1 | 72 | 122 | 24 | | 13 | -0.21 | 48 | 0.85 | 0.14 | |

Homo Black Next Step that's a good lookin rascal. This bull has calving ease and performance in his pedigree.



Lot
49

L7 9061G

PUREBRED, BULL (100/89.9)
DOUBLE POLLED/RED
02/25/2019 LSBL 9061G NPM2168431

COLE THUNDER 110T
DLVL XEROX 023X
DLVL SKY 605S
IVY'S BUBBA WATSON HTZ24B
MISS L7 712E
MISS L7 806U

| BW: 76 | Adj WW: 621 | Adj YW: 1111 | | | | | | | | | |
|--------|-------------|--------------|----|----|------|----|-------|----|------|-------|------|
| EPDs | CED | BW | WW | YW | MK | SC | DOC | YG | CW | REA | Marb |
| 15 | -1.4 | 57 | 84 | 21 | 0.25 | 18 | -0.77 | 6 | 1.09 | -0.54 | |

Here is a deep sided, thick made red bull with some calving ease

Lot
52

L7 9065G

LIM-FLEX, BULL (68/61.7)
DOUBLE POLLED/BLACK
04/01/2019 LSBL 9065G LFM2168435

S A V BRILLIANCE 8077
L7 DOMINO 6061D
MISS L7 419B
L7 CONQUEST 5040C
MISS L7 765E
MISS L7 119Y

| BW: 80 | Adj WW: 689 | Adj YW: 1134 | | | | | | | | | |
|--------|-------------|--------------|----|----|------|----|-------|----|------|-------|------|
| EPDs | CED | BW | WW | YW | MK | SC | DOC | YG | CW | REA | Marb |
| 12 | 1.5 | 60 | 93 | 24 | 0.94 | 12 | -0.46 | 19 | 0.91 | -0.18 | |

Another Domino son that's moderate in frame, soggy made and plenty thick

Lot
50

L7 9062G

LIM-FLEX, BULL (68/60.0)
HOMO POLLED (T)/RED (T)
02/26/2019 LSBL 9062G LFM2168432

ROMN TUFF ENUFF 103T
COLE CADILLAC 05C
COLE MISS XRATED 354A
VIN-MAR O'REILLY FACTOR
MISS L7 751E
MISS L7 548C

| BW: 78 | Adj WW: 678 | Adj YW: 1145 | | | | | | | | | |
|--------|-------------|--------------|----|----|------|----|-------|----|------|-------|------|
| EPDs | CED | BW | WW | YW | MK | SC | DOC | YG | CW | REA | Marb |
| 12 | -0.2 | 66 | 99 | 23 | 0.33 | 12 | -0.45 | 23 | 0.95 | -0.18 | |

A sporty red Lim-Flex that's smooth in his design and grew well after birth.

Lot
53

L7 9066G

PUREBRED, BULL (100/88.9)
DOUBLE POLLED/BLACK
04/18/2019 LSBL 9066G NPM2268701

WULFS UNLIMITED 5035U
L7 CORNER POCKET 5076C ET
MISS L7 510R
WULFS XCELLSIOR X252X
MISS L7 408B
MISS L7 108Y

| BW: 80 | Adj WW: 644 | Adj YW: 1159 | | | | | | | | | |
|--------|-------------|--------------|----|----|------|----|-------|----|------|-------|------|
| EPDs | CED | BW | WW | YW | MK | SC | DOC | YG | CW | REA | Marb |
| 10 | 0.2 | 55 | 76 | 21 | 0.51 | 12 | -0.88 | -2 | 1.31 | -0.49 | |

Long, muscular bull that has plenty going for him. Goes back to Chili-pepper

Lot
51

L7 9063G

LIM-FLEX, BULL (31/28.2)
DOUBLE POLLED/DOUBLE BLACK
02/27/2019 LSBL 9063G LFM2168433

MILL COULEE PAY RAISE
ICC PAY RAISE 4886
ICC BLACKBIRD 0739
L7 ALL THE ANSWERS 3056A
MISS L7 767E
MISS L7 559C

| BW: 70 | Adj WW: 637 | Adj YW: 1150 | | | | | | | | | |
|--------|-------------|--------------|-----|----|----|----|-------|----|------|------|------|
| EPDs | CED | BW | WW | YW | MK | SC | DOC | YG | CW | REA | Marb |
| 13 | -1.0 | 62 | 102 | 23 | | 13 | -0.09 | 28 | 0.39 | 0.14 | |

A calving ease bull with plenty to offer. Out of a real nice All the Answers female

Lot
54

L7 9074G

LIM-FLEX, BULL (62/55.8)
DOUBLE POLLED/BLACK
04/11/2019 LSBL 9074G LFM2269699

S A V BRILLIANCE 8077
L7 DOMINO 6061D
MISS L7 419B
CJSL WINDFALL 9072W
L7 BLISSFUL 435B
MISS L7 156Y

| BW: 85 | Adj WW: 700 | Adj YW: 1132 | | | | | | | | | |
|--------|-------------|--------------|----|----|------|----|-------|----|------|-------|------|
| EPDs | CED | BW | WW | YW | MK | SC | DOC | YG | CW | REA | Marb |
| 12 | 1.0 | 58 | 89 | 27 | 0.83 | 13 | -0.41 | 21 | 0.84 | -0.10 | |

Solid made Lim-Flex bull here. Long made and deep sided. Goes back to Calvados mother.



~ Open Heifers ~

Lot 55

MISS L7 933G

LIM-FLEX, FEMALE (43/39.3)
DOUBLE POLLED/DOUBLE BLACK
03/08/2019 LSBL 933G LFF2168491

SYDGEN 928 DESTINATION 5420
PRAIRIE PRIDE NEXT STEP 2036
FLYING V MISS PRIDE 426
DLVL XEROX 023X

MISS L7 757E
MISS L7 554C

| BW: 72 | Adj WW: 594 | | | | | | | | | | |
|--------|-------------|----|-----|----|----|----|-----|-------|----|------|------|
| EPDs | CED | BW | WW | YW | MK | SC | DOC | YG | CW | REA | Marb |
| 15 | -0.4 | 70 | 117 | 19 | | | 14 | -0.31 | 41 | 0.85 | 0.01 |

Endless opportunities with this tremendous Lim-Flex female. Excellent EPD's to go along with her easy to look at profile.



Full Sib to Lot 58

Lot 56

MISS L7 931G

LIM-FLEX, FEMALE (50/45.0)
DOUBLE POLLED/BLACK
03/10/2019 LSBL 931G LFF2168489

MISS COULEE PAY RAISE
ICC PAY RAISE 4886
ICC BLACKBIRD 0739
L7 BELLAGIO 4015B

MISS L7 731E
MISS L7 850U

| BW: 62 | Adj WW: 715 | | | | | | | | | | |
|--------|-------------|----|-----|----|----|----|-----|-------|----|------|-------|
| EPDs | CED | BW | WW | YW | MK | SC | DOC | YG | CW | REA | Marb |
| 12 | -1.3 | 73 | 115 | 20 | | | 12 | -0.31 | 27 | 0.75 | -0.04 |

Really like the Pay Raise cattle. This one is bred for calving ease and performance. Lots of longevity in this pedigree.



Half Sib to Lot 56

Lot 58

MISS L7 904G

LIM-FLEX, FEMALE (75/67.3)
DOUBLE POLLED/RED
03/08/2019 LSBL 904G LFF2168462

IVY'S MARKSMAN HTZ 10Z
IVY'S BUBBA WATSON HTZ24B
IVYS UNIQUE PERFECTION 3U
S A V BRILLIANCE 8077

MISS L7 342A
MISS L7 108Y

| BW: 77 | Adj WW: 549 | | | | | | | | | | |
|--------|-------------|----|----|----|------|----|-------|----|------|-------|------|
| EPDs | CED | BW | WW | YW | MK | SC | DOC | YG | CW | REA | Marb |
| 12 | -0.5 | 57 | 84 | 24 | 0.94 | 13 | -0.54 | 13 | 1.01 | -0.23 | |

Full sib to a popular lot in last years sale. Easy to look at female out of Bubba and goes back to Chilipepper. A lot going for this female.

Lot 59

MISS L7 914G

LIM-FLEX, FEMALE (75/66.4)
DOUBLE POLLED/DOUBLE BLACK
03/20/2019 LSBL 914G LFF2168472

WULF'S ZIPLOCK N922Z
LFLC DENVER 857D
LFLC ANNABELLE 857A
DUFF STANDOUT 785

MISS L7 061X
MISS L7 638S

| BW: 82 | Adj WW: 590 | | | | | | | | | | |
|--------|-------------|----|-----|----|------|----|-------|----|------|-------|------|
| EPDs | CED | BW | WW | YW | MK | SC | DOC | YG | CW | REA | Marb |
| 9 | 1.5 | 64 | 101 | 15 | 0.96 | 11 | -0.56 | 22 | 0.95 | -0.27 | |

Moderate made Denver female with lots of rib and shape. Out of a real good Standout female that's still on the place.

Lot 57

MISS L7 934G

LIM-FLEX, FEMALE (75/67.2)
DOUBLE POLLED/BLACK
03/24/2019 LSBL 934G LFF2168492

WULFS UNLIMITED 5035U
L7 CORNER POCKET 5076C ET
MISS L7 510R
S A V BRILLIANCE 8077

L7 CHIQUITA 551C
MISS L7 339A

| BW: 74 | Adj WW: 650 | | | | | | | | | | |
|--------|-------------|----|----|----|------|----|-------|----|------|-------|------|
| EPDs | CED | BW | WW | YW | MK | SC | DOC | YG | CW | REA | Marb |
| 11 | 0.8 | 64 | 91 | 24 | 0.66 | 12 | -0.63 | 17 | 1.19 | -0.31 | |

Had to get real firm with dad to open the gate to let this one in the pen. This kind of female is what made the ¼ blood females popular from the beginning. Broody, thick made, and carries herself real well.

Lot 60

MISS L7 918G

PUREBRED, FEMALE (87/78.2)
DOUBLE POLLED/DOUBLE BLACK
03/15/2019 LSBL 918G NPF2168476

WULF'S ZIPLOCK N922Z
LFLC DENVER 857D
LFLC ANNABELLE 857A
L7 XTREME 0067X

MISS L7 653D
MISS L7 249Z

| BW: 80 | Adj WW: 617 | | | | | | | | | | |
|--------|-------------|----|-----|----|------|----|-------|----|------|-------|------|
| EPDs | CED | BW | WW | YW | MK | SC | DOC | YG | CW | REA | Marb |
| 8 | 2.4 | 64 | 100 | 22 | 0.97 | 12 | -0.72 | 15 | 1.14 | -0.43 | |

Long patterned, muscular Denver female out of a solid Extreme female.

• Terms and Conditions •

Terms: Cash - settlement immediately after the sale unless prior arrangements have been made.

Health: September - Cattle Master 4 (IBR-BVD-PI3-BRSV); 7 way Clostridium; Haemophilus Somnus. Heifers are all Brucellosis vaccinated. October - Three weeks later at weaning; Cattle Master 4, Haemophilus Somnus, Ivomec. April - Bulls are scrotal measured, semen tested, Brucellosis tested. Breeding age females have had Preg 9, Anthrax in spring.

(1) On all animals sold, health tests will be announced at the sale or printed in the sale catalog. It is understood that health papers reflect the condition of the animal at the time of the sale but carry no further guarantee as to the future health of the animal. (2) Buyers having special health requests or who wish to take cattle into states with specific or rigid health regulations should inquire specifically about the health tests required for entry into their state. (3) All females sold are considered to be calf-hood vaccinated for Brucellosis unless they are otherwise stated in the catalog or announced from the block. It is suggested that verification of vaccination be written on the health certificate.

Delivery: Free delivery on any purchase of \$20,000 or more to any point in the continental US. Free delivery to central locations in South Dakota and surrounding states.

Guarantee: All bulls are semen tested and are guaranteed to be breeders and settle cows. Scrotal measurements will be available sale day. All females one year of age are guaranteed breeders.

Purchaser's Risk: Each animal becomes the risk of the purchaser as soon as sold. It shall be the obligation of the seller to see that the animals are fed and cared for free of charge to the purchaser for at least 48 hours following the sale. It shall be the obligation of the purchaser to see that trucking of the animal and care of the animal past the first 48 hours following the sale are taken care of.

Multiple Herd Use: The North American Limousin Association new rules state: any bull used A.I. in more than one herd, must have the dam blood typed. If you are planning on using any bulls this way, please write on invoice sale day so we have the blood work on those cows on file. Lots 2, 3, 17, 19, 20, 22, 30, 32, 50, and 54 are not eligible for A.I. use. Dams were sold before blood typed.

Liability: Each animal will be at the buyer's risk as soon as sold, but will be cared for by the seller for a reasonable period of time. Every precaution will be taken for the welfare of the cattle sold. The L7 Bar Ranch will

not be responsible for accidents, but every effort will be made to provide for the safety and comfort of those attending the sale.

Identification of Animals: (1) Each animal sold will have a readable tattoo corresponding to its registration paper. (2) Seller agrees to check all tattoos for accuracy prior to the sale. The buyer has the responsibility for rechecking the tattoos after taking possession and reporting any discrepancies to the seller immediately. (3) All animals to be sold will be identified by their official registration number, their tattoo and their registered name. If nicknames are used, they should be in addition to the other information. (4) The North American Limousin Foundation (NALF) board recommends that when any animal is sold, there is complete disclosure of any retained genetics in the form of pregnant recipients, frozen embryos or frozen semen.

Registration Certificates: (1) The seller of the animal will submit the original registration certificate with transfer information or an application for registration with transfer information on it so that a certificate can be produced by the Foundation and transferred to the new buyer. The seller must sign the back of the certificate on the application to authorize the transfer. (2) It is the responsibility of the seller to provide NALF with the buyer's complete name, address and membership number (if available) so that they can complete the transfer. It is important that the membership number be given if the buyer is already a member of NALF. (3) It is the seller's responsibility to provide the certificate or application, and transfer information to NALF within 60 days of sale, and pay transfer and registration fees.

Announcements: (1) Any change from the information that is printed in the catalog will be announced from the auction block. (2) All announcements made from the auction block take precedence over the printed catalog. (3) Catalogued lots not selling will be announced prior to the sale.

Mail Bids: Mailed or telephoned bids will be handled in a most confidential manner. If you are unable to be present to place your bids, please feel free to contact the Peterson's.

Rod & Wendy Peterson
34715 255th St.
Pukwana, SD 57370

FIRST CLASS MAIL
U.S. POSTAGE
PAID
MITCHELL, SD
PERMIT NO. 71