



PIECE *of the* PIE
Limousin Production Sale

OCTOBER 16, 2021
FLINTOFT, SASKATCHEWAN



Welcome to the PIECE OF THE PIE SALE

Our goal as Limousin breeders has always been to breed cattle that not only improve our program but cattle that will improve the Limousin breed. We want our cattle to contribute to the beef industry by adding muscle to their progeny. To do this efficiently requires a low maintenance, highly fertile female. A female that is an easy keeper with a sound udder and a calm disposition is essential. We are proud to offer females that exemplify our program. Welcome to our Piece of the Pie sale!



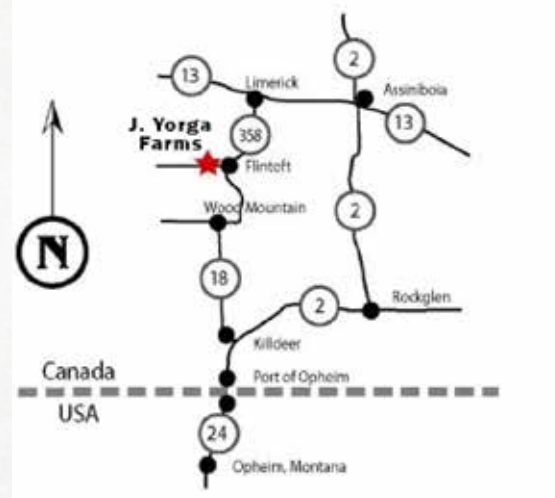
2021 has presented a unique set of circumstances. The drought turned into a disaster in southern Saskatchewan. The heat, grasshoppers and dust pushed everybody. The cows earned it this year. Decisions made in a tough year will set you up for the future. This is your chance to add cattle to your herd that are proven to handle the extreme conditions, and will thrive when the grass grows again. Don't miss this opportunity.

Featured will be the first get and service of Anchor B Gold Rush. He is a true performance bull that will help the breed maintain its growth capabilities while taking care of disposition and fertility.

We believe the females on offer have the ability to move every program forward and that every lot has the potential for greatness. We invite your inquiries and look forward to a fun day of JYF hospitality and Limousin cattle opportunities.



JYF



Sale INFORMATION

SALE LOCATION:

Yorga Sale Barn at the Ranch - Flintoft, SK

SALE SCHEDULE:

October 15th - Cattle available for viewing

5:30pm Dinner refreshments

October 16 - Cattle available for viewing

12:00 Lunch

2:00 Sale

SALE DAY CONTACTS:

Kelly Yorga 306-642-7023 (cell)

Jeff Yorga 306-531-5717 (cell)

Kiley McKinna 402-350-3447

Wiley Fanta 320-287-0751

AUCTIONEER:

Ryan Hurlburt 306-292-9812

SALE BROADCAST BY:

Sarah Buchanan
306-681-5340



INSURANCE

Shelly DeChamps 306-472-5515

EPDS

EPDs are produced weekly so there will be some changes by sale time. The Canadian Limousin Assoc. website will have current numbers.

PHOTOGRAPHY

Maureen Tubman for Browarny.... 306-730-7822

CATALOG

Donna Bohrson 306-221-5300

VET:

Dr. Kelly Lightfoot..... 306-642-8977

Dr. Marshal McDonald 306-291-0159

SALE TERMS & CONDITIONS:

Cattle sell under the standard terms & conditions of the Canadian Limousin Association.

ACCOMMODATIONS:

Franklin Motel 306-642-3377

Canalta Hotel 306-642-1010

Bar B Motor Inn 306-642-5951

Wheel In Motel 306-642-3308

121 Steakhouse and Motel .. 306 642-4662

ANNOUNCEMENTS

Announcements at the sale by the owners or auctioneer will take precedence over statements in the sale catalog.

HERD HEALTH:

Prior to breeding - All cows and bulls are vaccinated with modified-live vaccine for: IBR, BVD (types 1 & 2) PI3, BRSV.

Calves are vaccinated with modified-live vaccine for: IBR, BVD (types 1 & 2) PI3, BRSV, 8 way clostridial, haemophilus, pasturellia.

Bulls, cows and calves are treated for internal and external parasites.

Prior to weaning - All calves vaccinated (boosted) with modified-live vaccines for: IBR, BVD (types 1 & 2) PI3, BRSV, 8 way clostridial, haemophilus, pasturellia.

Bulls, cows and calves treated with pour-on parasite control.

Prior to Sale - All bulls are semen tested and given the first treatment of Fusogard.

All cows are tested for Johne's disease. We have a zero tolerance policy for positive tests. These animals and their offspring are removed from the breeding herd to insure the the future health of your herd.

It is my pleasure to once again be involved with the Yorga family and the inaugural Piece of the Pie female Sale.

As you study the offering, you will notice a truly unique blending of both Canadian and U.S bloodlines. Regardless of the genetic makeup, the Yorga family remains intent on creating the best possible Limousin seedstock for their loyal customer base of both astute seedstock producers and savvy commercial cattlemen.

J. Yorga Farms Ltd has been involved with the Limousin breed since they purchased their first half blood bull in 1970. They fell in love with the muscle that the Limousin breed provided the beef industry. Throughout the years they have worked to not only improve their program but the Limousin breed as well. Thus the slogan, "Where Limousin keep getting better".

Females that have been selected from their program over the years have gone on to have a big impact on the breed across North America. As a steadfast examples of the aforementioned statement, JYF Passion 443P has over 53 registered progeny to date for Tim Matthews of Rivestone Cattle Co and JYF 530X has over 77 registered progeny for Wulf Cattle of Morris, MN. Many of the females offered in the inaugural "Piece of the Pie" sale have the ability to hit the donor pen and surpass those numbers for their new owners.

That said, on behalf of the entire J. Yorga Farms and MC Marketing teams, I invite you to their farm in Flintoff, Saskatchewan, Saturday, October 16 for a truly outstanding collection of Limousin females capable of taking any program to new heights. If you are unable to attend, it would be my pleasure to handle your business in the most confidential and professional manner possible.

Please do not hesitate to contact J. Yorga Farms directly, or any member of the sales team, leading up to the sale with any questions you may have regarding this awe inspiring set of Limousin genetics.

I look forward to assisting you in adding to your genetic arsenal with cattle from one of the most astute beef cattle families in the Limousin business today.

Sincerely,

Kiley McKinna

MC Marketing Management

402/350-3447



Kiley McKinna



Wiley Fanta





The
BRED COWS

In order to make cattle from our place fit your program, we have taken some of our top fall females and bred them for January calves. Our last 4 Denver bull pens have come from the Fall calving group. The genetic opportunity here is exciting, and we look forward to seeing these tattoos anchor your program for years to come.

We have mated these cows to one of the most talked about bulls in the industry, Anchor B Gold Rush. Some of Gold Rush's first progeny were born in our spring calving program. We will have them on display and for sale on October 16th. They excel in performance and growth. We are excited to watch their development and contribution to the Limousin breed. We expect his daughters to milk and his bulls to be super fertile, all with great dispositions. The Piece of the Pie is your opportunity to be part of his future legacy, and the only chance you will have to own progeny registered with your tattoo.



Dam of Gold Rush - Anchor B Bailey



The future...
GOLD RUSH



LOT 1

JYF BOLERO 121B

Red

Homo Polled (T)

JYF 121B CPF0221411 92% 15 May 2014 BW: 80 Adj WW: 623

sire: WULFS ZEPHYR X624Z
 HC OVERTIME 972
 HC FINAL TIME 407
 HC POLLED CANDY 763
 WULFS NOBEL PRIZE 3861N
 WULFS SOLOIST 6284S
 WULFS JOY BELLS 9202J
dam: SY RED HOT 378R
 ROMN JUSTICE
 ROMN FORTUNE
 ROMN LADY ROCK 57G
 SY 204M
 SY ANYTIME 454H
 DEVONS THE REAL DEAL

Here is a powerful Zephyr daughter that is fault free in her design. Her dam was flushed successfully and we expect Bolero to be in the donor pen as well. A full brother JYF Cornwell is working for DeJager Limousin and a maternal brother JYF Yuri is working for Lazy S and Runaway Ranch. If you're looking to build around a big time cow family, here it is. We have retained her 2020 born daughter in the herd to carry on her legacy. Her 2019 daughter sells as Lot 10.

Observed bred Gold Rush April 10. Exposed April 1-30

CLA EPDs				Estimated Progeny EPDs			
Gest	-3	SC	0.85	Gest	-2.5	SC	1.13
CED	8	ST	19	CED	8	ST	18
BW	3.3	DOC	15	BW	2.8	DOC	17
WW	70	YG	-0.6	WW	73	YG	-0.63
YW	106	CW	25	YW	107	CW	33
MK	23	REA	1.47	MK	26	REA	1.57
TM	57	MB	-0.28	TM	62	MB	-0.35
CEM	0	FT	-0.08	CEM	2.5	FT	-0.09



JYF Yuri 13Y - Maternal Brother



JYF Cornwell - Maternal Brother



Gold Rush - Service Sire



JYF 613H (Lot 34) - Maternal Sister



Wulfs Soloist - Paternal Granddam



Wulfs Zephyr - Sire



LOT 2

JYF COMPASSION 131C

Black

Homo Polled (T)

JYF 131C CPF4077561 92% 28 May 2015 BW: 90 Adj WW: 770 Adj YW: 1122

HC OVERTIME 972
 HC FINAL TIME 407
 HC POLLED CANDY 763
sire: WULFS ZEPHYR X624Z
 WULFS NOBEL PRIZE 3861N
 WULFS SOLOIST 6284S
 WULFS JOY BELLS 9202J

TMF NAPOLEAN 734N
 TMF RANGER 603R
 CWP POLLED BLACK HOLLY
dam: TMF MISS 613T
 WULF'S COUNT DOWN 9251C
 EXLR 102D PEACHES 4135H
 EXLR PEACHES 102D

CLA EPDs				Estimated Progeny EPDs			
Gest	-2	SC	0.45	Gest	-2	SC	0.93
CED	5	ST	16	CED	6.5	ST	16.5
BW	4.6	DOC	11	BW	3.5	DOC	15
WW	78	YG	-0.68	WW	77	YG	-0.67
YW	118	CW	34	YW	113	CW	37.5
MK	24	REA	1.65	MK	27	REA	1.66
TM	63	MB	-0.1	TM	65	MB	-0.26
CEM	3	FT	-0.1	CEM	4	FT	-0.1

These Zephyr daughters are a great way to start the sale. On the dam side, Compassion goes back to the much talked about EXLR Peaches cow. She is massive in her design and fault free in her structure. The unique pedigree means she can be mated several different ways in the donor pen. Her 2020 bull calf is shortlisted for Denver 2022. Bred to Gold Rush for an early January coupon.

AI Gold Rush March 26 (Vet opinion safe) Exposed April 1-30



Wulfs Zephyr - Sire



JYF 607H - Son



Gold Rush - Service Sire



LOT 3

JYF DEMURE 331D

Red

Het Polled (T)

JYF 331D CPF4083569 93% 04 June 2016 BW: 75 Adj WW: 669 Adj YW: 924

HC OVERTIME 972
 HC FINAL TIME 407
 HC POLLED CANDY 763
sire: **WULFS ZEPHYR X624Z**
 WULFS NOBEL PRIZE 386IN
 WULFS SOLOIST 6284S
 WULFS JOY BELLS 9202J

ROMN JUSTICE
 ROMN MADE TO ORDER
 ROMN MISS THICK 34K
dam: **SY JBAK RIGHT ONE 641R**
 EAFF REJUVENATOR 260J
 JBAK 671M
 JBAK FANCY LOOKER 652D

Demure is out of one of our all-time favorite cows SY 641R, that has been a mainstay in our program. She has an excellent Executioner daughter selling as Lot 11. Bred April 9 to Gold Rush should be a no miss opportunity for greatness.

Bred Gold Rush April 9. Exposed April 1-30

CLA EPDs				Estimated Progeny EPDs			
Gest	-3	SC	1	Gest	-2.5	SC	1.2
CED	9	ST	13	CED	8.5	ST	15
BW	0.7	DOC	20	BW	1.5	DOC	19.5
WW	64	YG	-0.58	WW	70	YG	-0.62
YW	95	CW	34	YW	101	CW	37.5
MK	26	REA	1.43	MK	27.5	REA	1.55
TM	58	MB	-0.15	TM	62.5	MB	-0.29
CEM	3	FT	-0.09	CEM	4	FT	-0.1



SY JBAK Right One 641R - Dam



JYF 503G (Lot 11) - Daughter



Gold Rush - Service Sire



LOT 4

JYF ESSENCE 713E ET

JYF 713E CPF4089973 94% 06 Apr 2017 BW: 90 Adj WW: 717

Red

Het Polled (T)

sire: ROMN MADE TO ORDER
 ROMN FORTUNE
 ROMN JUSTICE
 ROMN LADY ROCK 57G
 DT POLLED THICK SET 01E
 ROMN MISS THICK 34K
 ROMN MISS CLEO 40D

dam: JBAK 671M
 HARVEST OLYMPUS
 EAFF REJUVENATOR 260J
 SOGF AMBER KRUG 264B
 TOMR POLLED LOOK
 JBAK FANCY LOOKER 652D
 WSW5 768V

Here is an exciting opportunity to purchase an own daughter of Made to Order. We flushed her dam to try and get more offspring like her full sib, SY 641R. The Gold Rush mating should add even more performance to this brood cow factory. Her 2021 daughter sells as Lot 38.

Observed bred to Gold Rush April 7. Exposed April 1-30



ROMN Made to Order - Sire

CLA EPDs				Estimated Progeny EPDs			
Gest	-2	SC	0.95	Gest	-2	SC	1.2
CED	8	ST	12	CED	8	ST	14.5
BW	2.5	DOC	11	BW	2.4	DOC	15
WW	59	YG	-0.56	WW	67	YG	-0.61
YW	81	CW	31	YW	94	CW	36
MK	29	REA	1.26	MK	29	REA	1.46
TM	59	MB	-0.22	TM	63	MB	-0.32
CEM	4	FT	-0.1	CEM	4.5	FT	-0.1



JBAK 671 - Dam



SY JBAK Right One 641R - Full Sib



Gold Rush - Service Sire



JYF 638H - Daughter



LOT 5

JYF MISS FLINTOFT 317D

Red

Polled

JYF 317D CPF4087878 93% 25 May 2016 BW: 80 Adj WW: 646 Adj YW: 944

WULFS TITUS 2149T
WULFS XTRACTOR X233X
WULFS MYRLENE 2332M
sire: **EXCEL POLLED AXEL ROSE**
ANCHOR B FREEDOM
EXCEL POLLED THIMBLE
TJS POLLED BLACK RUM

WULFS RANSOM 3059R
WULFS WARDEN N502W
PLND RAZZMAZZ 502R
dam: **JYF 615Z**
HIGHLAND REWARD
TMF MISS 265W
JYF KOTO

317D is a daughter of Excel Polled Axel Rose who was the high seller in the first Excel Ranches Excellence sale. Both her dam and granddam are powerful milking females. She is indexing 105 on calves weaned. She passes on her softness and depth of body to her progeny. Her 2021 bull calf (pictured) is outstanding.

Bred April 7 Gold Rush Exposed April 1-30

CLA EPDs				Estimated Progeny EPDs			
Gest	-2	SC	0.7	Gest	-2	SC	1.1
CED	7	ST	13	CED	7.5	ST	15
BW	4.5	DOC	16	BW	3.4	DOC	17.5
WW	77	YG	-0.65	WW	76	YG	-0.65
YW	118	CW	18	YW	113	CW	29.5
MK	25	REA	1.35	MK	27	REA	1.51
TM	64	MB	-0.11	TM	65.5	MB	-0.27
CEM	4	FT	-0.1	CEM	4.5	FT	-0.1



Excel Polled Axel Rose - Sire



JYF 622H - 2021 Son



Gold Rush - Service Sire



LOT 6

JYF MISS FLINTOFT 321D

Black

Polled

JYF 321D CPF4083561 93% 26 May 2016 BW: 90 Adj WW: 631 Adj YW: 889

LVLS POLLED JUSTICE 0601E
 HUNT MR JOCK 44J
 HUNT MISS GIGGLE 129G
sire: **KING WULF 8274Y**
 WULFS RANGE RIDER 2056R
 WULFS UPPITY TALK 8274U
 MISS WULFETTE 7177G

LINO
 TMF NOBEL 360N
 MARGOTTE
dam: **TMF 764S**
 EXLR DAKOTA 353G
 TOP MEADOW 405M
 NP SHAMELESS GAL 123G

CLA EPDs				Estimated Progeny EPDs			
Gest	-2	SC	1	Gest	-2	SC	1.2
CED	5	ST	9	CED	6.5	ST	13
BW	5.6	DOC	12	BW	4	DOC	15.5
WW	62	YG	-0.62	WW	69	YG	-0.64
YW	83	CW	16	YW	95	CW	28.5
MK	29	REA	1.22	MK	29	REA	1.44
TM	59	MB	-0.25	TM	63	MB	-0.34
CEM	4	FT	-0.1	CEM	4.5	FT	-0.1

321D has high selling bulls working for Highland Stock Farms in Bragg Creek and Darcy Champion in Bellview Manitoba. She has a knockout bred heifer selling as Lot 9, as well as indexing 114 on her progeny. A proven track record with a Gold Rush coupon on the way.

Observed bred Gold Rush April 23. Exposed April 1-30.



JYF 502G (Lot 9) - Daughter



JYF 615F - Son at Highland Stock Farms



JYF 504G - Son for Darcy Champion



Gold Rush - Service Sire



COLE WULF HUNT
 WULFS UNABRIDGED 6093U
 WULFS SEVENTH HEAVEN6093S
sire: **WULFS YALTON 7480Y**
 HUNT MR JOCK 44J
 WULFS TEAL BLUE 7480T
 WULFS DELTA DAWN 4055D

COLE FIRST DOWN 46D
 D&M ENDZONE 3J
 D&M MISS POLLED PEBBLES
dam: **TMF MISS 602T**
 MASTER BRUN YANKEE 225X
 CWP POLLED BLACK HOLLY
 CWP POLLED CHEER LEADER

CLA EPDs				Estimated Progeny EPDs			
Gest	-3	SC	1.2	Gest	-2.5	SC	1.3
CED	9	ST	18	CED	8.5	ST	17.5
BW	1.8	DOC	15	BW	2.1	DOC	17
WW	58	YG	-0.57	WW	67	YG	-0.61
YW	98	CW	14	YW	103	CW	27.5
MK	17	REA	1.29	MK	23	REA	1.48
TM	46	MB	-0.16	TM	56.5	MB	-0.29
CEM	5	FT	-0.07	CEM	5	FT	-0.09

Maureen
 @Bovary

LOT 7

JYF MISS FLINTOFT 506C Het Black (T) Homo Polled (T)
 JYF 506C CPF4077580 90% 06 Sept 2015

BW: 68 Adj WW: 559

Homo Polled daughter of Wulfs Yalton, with a pedigree twist that includes D&M Endzone. All of her progeny have above average ribeyes. A daughter sells as Lot 33. Gold Rush should add even more performance and milk to the mating.
Observed bred to Gold Rush April 12. Exposed April 1-30



JYF 603H (Lot 33)
 Daughter

JYF 527G - Son

Gold Rush -
 Service Sire

JYF EMOTION 30E Black Homo Polled (T)
 JYF 30E CXF4087922 81% 17 April 2017

BW: 80 Adj WW: 721

Homo Polled cow out of a big milking 1038U daughter with a +39 for Milk. Arcade sons have been in high demand by commercial cattleman. We felt we had to include a daughter in our Piece of the Pie sale, and Emotion 30E is one of the best. Bred March 24 for an early January Gold Rush coupon. **AI bred Gold Rush March 24. Exposed April 1-30.**



SCCJ Arcade - Sire

Gold Rush - Service Sire

ROMN SYSTEMATIC 118S
 SYES WORK HORSE 936W
 RPLF JULIA 936J
sire: **SCCJ ARCADE 394A**
 CARROUSELS NASDAQ
 SCCJ SKY 669S
 JBAK LADY SURE SHOT 660L
 ROMN MADE TO ORDER
 TMFS1038U
 SCCC BETTY 208R
dam: **JYF AURA 55A**
 FWLY BIG TIME
 TMF MISS 195U
 JYF PROTOCOL

CLA EPDs				Estimated Progeny EPDs			
Gest	-3	SC	1.3	Gest	-2.5	SC	1.4
CED	6	ST	16	CED	7	ST	16.5
BW	4.2	DOC	8	BW	3.3	DOC	13.5
WW	65	YG	-0.5	WW	70	YG	-0.58
YW	90	CW	10	YW	99	CW	25.5
MK	29	REA	1	MK	29	REA	1.33
TM	62	MB	-0.15	TM	64.5	MB	-0.29
CEM	4	FT	-0.07	CEM	4.5	FT	-0.09



Maureen
 @Bovary

LOT 8



The FALL HEIFERS

These fall heifers have been grown out and bred for an early 2022 calf. We have bred them to 2 calving ease sires to give them a good start in production. They were AI'd to the proven LFLC Checking Account 701C for some of his first calves in Canada. Then cleaned up with our proven calving ease sire JYF Fiddler 201F (April 20 to May 15)

This will be your first opportunity to purchase bred heifers from Plains Polled Executioner. He has surpassed all our expectations for soundness, carcass data and disposition. His first daughters are milking and doing an excellent job in their first lactation. Executioner will play a big part of our future breeding decisions.

JYF GINGER 502G Red Homo Polled (T) BW: 75 Adj WW: 588 Adj YW: 792
 JYF 502G CPF4104801 93% 10 Sept 2019

Outstanding Homo Polled daughter of Lot 6. Deep and thick with a calm disposition. Ginger is a fault free female that is close to perfection. We think the mating to Checking Account might result in the perfection we strive for. This is a heck of a way to start off the bred heifer division, a tremendous selection opportunity.

AI April 6/21 to LFLC Checking Account 701C (safe) Exposed JYF Fiddler April 20-May 15



Executioner - Sire



JYF 321D (Lot 6) - Dam



JYF 615F - Maternal Sib



JYF 504G - Maternal Sib



Checking Account Service Sire



RLF YARDLEY 601Y
 PLNS POLLED ABRAHAM
 PLNS POLLED YAKIRA 25Y
sire: **PLNS POLLED EXECUTIONER 19E**
 TMF TRAVELER 742T
 TMF MISS 574X
 TMF MISS 623T
 HUNT MR JOCK 44J
 KING WULF 8274Y
 WULFS UPPITY TALK 8274U
dam: **JYF MISS FLINTOFT 321D**
 TMF NOBEL 360N
 TMF 764S
 TOP MEADOW 405M

CLA EPDs			Estimated Progeny EPDs		
Gest	-3	SC 0.65	Gest	-5	SC 0.7
CED	7	ST 11	CED	10.5	ST 10.5
BW	4.1	DOC 15	BW	1.6	DOC 12
WW	62	YG -0.5	WW	67	YG -0.6
YW	88	CW 11	YW	91	CW 15
MK	24	REA 1.08	MK	24.5	REA 1.19
TM	55	MB -0.01	TM	58	MB -0.14
CEM	5	FT -0.07	CEM	6.5	FT -0.1

LOT 9



RLF YARDLEY 601Y
 PLNS POLLED ABRAHAM
 PLNS POLLED YAKIRA 25Y
sire: **PLNS POLLED EXECUTIONER 19E**
 TMF TRAVELER 742T
 TMF MISS 574X
 TMF MISS 623T

HC FINAL TIME 407
 WULFS ZEPHYR X624Z
 WULFS SOLOIST 6284S
dam: **JYF BOLERO 121B**
 ROMN JUSTICE
 SY RED HOT 378R
 SY 204M

CLA EPDs			Estimated Progeny EPDs		
Gest	-3	SC 0.57	Gest	-4	SC 0.6
CED	9	ST 14	CED	13	ST 12
BW	2.2	DOC 16	BW	-0.4	DOC 15
WW	67	YG -0.51	WW	55	YG -0.47
YW	99	CW 21	YW	85	CW 19
MK	21	REA 1.23	MK	22.5	REA 1.16
TM	54	MB -0.05	TM	50	MB -0.04
CEM	4	FT -0.07	CEM	6	FT -0.06

JYF GOLDIE 523G

JYF 523G CPF4102002 93% 06 Oct 2019

Homo Polled Executioner daughter that has a very bright future. Her dam sells as Lot 1! We believe that she has the ability to exceed her dam in production. Goldie has a balanced EPD profile with unlimited mating potential.

Observed bred JYF Fiddler 201F May 6, Exposed April 20 - May 15

Red Homo Polled (T) BW: 75 Adj WW: 642 Adj YW: 786



JYF 121B (Lot 2) Dam



Executioner - Sire



Fiddler Service Sire

JYF GLOW 503G

JYF 503G CPF4104802 93% 10 Sept 2019

Another exciting Homo Polled Executioner daughter with an excellent EPD profile. Her dam sells as Lot 3! She has unending future mating potential. After clipping her first coupon she should be able to be mated to the power bull of your choice.

Observed bred JYF Fiddler 201F April 26. Exposed April 20 - May 15

Black Homo Polled (T) BW: 65 Adj WW: 564 Adj YW: 731



JYF 331D (Lot 3) Dam



SY 642R Granddam



Fiddler Service Sire



RLF YARDLEY 601Y
 PLNS POLLED ABRAHAM
 PLNS POLLED YAKIRA 25Y
sire: **PLNS POLLED EXECUTIONER 19E**
 TMF TRAVELER 742T
 TMF MISS 574X
 TMF MISS 623T

HC FINAL TIME 407
 WULFS ZEPHYR X624Z
 WULFS SOLOIST 6284S
dam: **JYF DEMURE 331D**
 ROMN MADE TO ORDER
 SY JBAK RIGHT ONE 641R
 JBAK 671M

CLA EPDs			Estimated Progeny EPDs		
Gest	-3	SC 0.65	Gest	-4	SC 0.65
CED	10	ST 11	CED	13.5	ST 10.5
BW	0.6	DOC 21	BW	-1.2	DOC 17.5
WW	70	YG -0.47	WW	57	YG -0.45
YW	103	CW 22	YW	87	CW 19.5
MK	22	REA 1.06	MK	23	REA 1.07
TM	57	MB 0.06	TM	51.5	MB 0.02
CEM	6	FT -0.07	CEM	7	FT -0.06



HC FINAL TIME 407
 WULFS ZEPHYR X624Z
 WULFS SOLOIST 6284S
sire: JYF CHUNK 35C
 CLLL NEW DIRECTION 394P
 TMF MISS 186W
 TOP MEADOW 412M

WULFS RANSOM 3059R
 WULFS WARDEN N502W
 PLND RAZZMATAZZ 502R
dam: JYF ADORE 105A
 ROMN MADE TO ORDER
 TMF MISS 175U
 TOP MEADOW 1001P

CLA EPDs			Estimated Progeny EPDs		
Gest	-3	SC 1.35	Gest	-4	SC 1
CED	7	ST 12	CED	12	ST 11
BW	4	DOC 17	BW	0.5	DOC 15.5
WW	72	YG -0.71	WW	58	YG -0.57
YW	101	CW 30	YW	86	CW 23.5
MK	22	REA 1.54	MK	23	REA 1.31
TM	58	MB -0.27	TM	52	MB -0.15
CEM	4	FT -0.12	CEM	6	FT -0.08

JYF GENE 511G Red Polled BW: 75 Adj WW: 668 Adj YW: 831
 JYF 511G CPF4101990 94% 17 Sept 2019

This JYF Chunk daughter is a favorite of all who see her. Her dam is a big milking Wulfs Warden daughter, and her granddam has a milk EPD of +36. Her maternal sister JYF 501E is working for Lazy A Limousin, Cando SK.

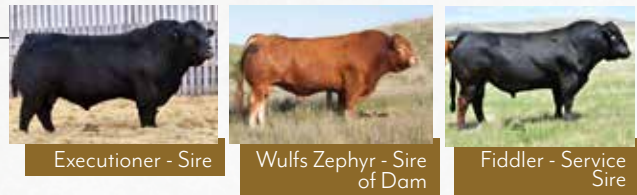
Observed JYF Fiddler 201F April 30. Exposed April 20- May 15



JYF GRETA 529G Black Homo Polled (T) BW: 90 Adj WW: 703 Adj YW: 888
 JYF 529G CPF4102008 93% 23 Oct 2019

Homo Polled Executioner daughter that is in the top 1% of the breed for weaning weight and yearling weight. Her dam is a Zephyr daughter with a 113 index on her progeny and a +33 for milk. We expect Greta to be an excellent cow in production.

Observed April 30 JYF Fiddler 201F, Exposed April 20- May 15



RLF YARDLEY 601Y
 PLNS POLLED ABRAHAM
 PLNS POLLED YAKIRA 25Y
sire: PLNS POLLED EXECUTIONER 19E
 TMF TRAVELER 742T
 TMF MISS 574X
 TMF MISS 623T

HC FINAL TIME 407
 WULFS ZEPHYR X624Z
 WULFS SOLOIST 6284S
dam: JYF MISS FLINTOFT 530C
 TMF SYMBOL 188S
 JYF 5Y
 TOP MEADOW 278K

CLA EPDs			Estimated Progeny EPDs		
Gest	-3	SC 0.55	Gest	-4	SC 0.6
CED	8	ST 14	CED	12.5	ST 12
BW	4.8	DOC 18	BW	0.9	DOC 16
WW	86	YG -0.46	WW	65	YG -0.44
YW	135	CW 38	YW	103	CW 27.5
MK	26	REA 1.29	MK	25	REA 1.19
TM	69	MB -0.09	TM	57.5	MB -0.06
CEM	5	FT -0.07	CEM	6.5	FT -0.06



LOT 14

WULFS XTRACTOR X233X
 WULF'S ZIPLOCK N922Z
 PLND WINDMILL 922W
sire: LFLC DENVER 857D
 RUNL WALKING TALL 252W
 LFLC ANNABELLE 857A
 LFLC DAKOTA BELLE 602U
 KAJO RESPONDER 120R
 AHCC WOOD MOUNTAIN W796
 EXLR 794H
dam: JYF CORONA 128C
 CHTT SECURITY 4639S
 SY XERCISE 379X
 SY 205M

CLA EPDs			Estimated Progeny EPDs		
Gest	-4	SC 0.8	Gest	-5.5	SC 0.8
CED	9	ST 17	CED	11.5	ST 13.5
BW	2.7	DOC 14	BW	0.9	DOC 11.5
WW	71	YG -0.45	WW	72	YG -0.58
YW	107	CW 33	YW	101	CW 26
MK	17	REA 1.09	MK	21	REA 1.2
TM	52	MB -0.17	TM	56.5	MB -0.22
CEM	7	FT -0.08	CEM	7.5	FT -0.11

JYF GIANNA 510G Double Black Homo Polled (T) BW: 75 Adj WW: 580 Adj YW: 798
 JYF 510G CPF4101989 92% 17 Sept 2019

Homo Polled LFLC Denver heifer. The Denver progeny have shown a lot of performance in our program. Her Granddam, SY 379X has a lifetime index on her progeny of 108 and is still in production.

AI LFLC Checking Account April 7 (Safe) Exposed JYF Fiddler April 20-May 15



LFLC Denver - Sire



Checking Account - Service Sire

JYF GERDA 501G Black Homo Polled (T) BW: 68 Adj WW: 600 Adj YW: 785
 JYF 501G CPF4101983 93% 08 Sept 2019

Check out the EPD profile on this Homo Polled JYF Enigma daughter! Her dam is out of the JYF Zeek 151Z bull that is doing an outstanding job for Vaughns in North Dakota. Gerda's pedigree is stacked for milk. We expect her to have an excellent production record.

AI LFLC Checking Account April 7 (Safe) Exposed JYF Fiddler 201f April 20 - May 15



JYF 23E - Dam



Enigma - Sire



JYF 618H - Maternal Brother



LOT 15

HUNT MR JOCK 441
 WULFS AMAZING BULL T341A
 WULFS ULTRA DIAMOND 8571U
sire: JYF ENIGMA 706E ET
 ROMN MADE TO ORDER
 TMF MISS 125U
 TOP MEADOW 411M
 AHCC WOOD MOUNTAIN W796
 JYF ZEEK 151Z
 TMF MISS 627T
dam: JYF ESTER 23E
 WULFS YALTON 7480Y
 JYF ALLURE 52A
 TMF THISTIME 276T

CLA EPDs			Estimated Progeny EPDs		
Gest	-4	SC 1.23	Gest	-5.5	SC 1.0
CED	17	ST 17	CED	15.5	ST 13.5
BW	-1	DOC 18	BW	-1.0	DOC 13.5
WW	67	YG -0.71	WW	70	YG -0.71
YW	102	CW 14	YW	98	CW 16.5
MK	34	REA 1.43	MK	29.5	REA 1.37
TM	67	MB -0.36	TM	64	MB -0.32
CEM	11	FT -0.11	CEM	9.5	FT -0.12



LOT 16

RLF YARDLEY 601Y
 PLNS POLLED ABRAHAM
 PLNS POLLED YAKIRA 25Y
sire: **PLNS POLLED EXECUTIONER 19E**
 TMF TRAVELER 742T
 TMF MISS 574X
 TMF MISS 623T
 HC FINAL TIME 407
 WULFS ZEPHYR X624Z
 WULFS SOLOIST 6284S
dam: **JYF DELICATE 314D**
 TMF RANGER 603R
 TMF MISS 613T
 EXLR 102D PEACHES 4135H

CLA EPDs				Estimated Progeny EPDs			
Gest	-3	SC	0.38	Gest	-5.0	SC	0.6
CED	5	ST	13	CED	9.5	ST	11.5
BW	4.5	DOC	15	BW	1.8	DOC	12
WW	76	YG	-0.58	WW	74	YG	-0.64
YW	118	CW	29	YW	106	CW	24
MK	23	REA	1.31	MK	24	REA	1.31
TM	60	MB	-0.09	TM	60.5	MB	-0.18
CEM	4	FT	-0.1	CEM	6.0	FT	-0.12

JYF GENEVIEVE 508G Het Black (T) Homo Polled (T) BW: 85 Adj WW: 630 Adj YW: 770
 JYF 508G CPF4101987 93% 17 Sept 2019

Homo Polled Executioner daughter out of an excellent Zephyr daughter. She is in the top 5% of the breed for weaning and yearling EPD. LFLC Checking Account should be the perfect mating for her first effort in production.

A.I. LFLC Checking Account April 7 (Safe) Exposed JYF Fiddler 201F April 20- May 15



JYF GEMMA 516G Black Het Polled (T) BW: 79 Adj WW: 595 Adj YW: 814
 JYF 516G CPF4101995 92% 20 Sept 2019

Another beautiful JYF Chunk heifer with a balanced EPD profile. Her dam came from Brad and Janet Waddle, Waddle Limousin Ranch in Wyoming. Bred early to Checking Account

A.I LFLC Checking Account April 7 (Safe) Exposed JYF Fiddler April 20-May 15



LOT 17

HC FINAL TIME 407
 WULFS ZEPHYR X624Z
 WULFS SOLOIST 6284S
sire: **JYF CHUNK 35C**
 CLLL NEW DIRECTION 394P
 TMF MISS 186W
 TOP MEADOW 412M
 KRMC OUTCROSS 192G
 WADDLES NATE 307
 WADDLES LEVANA 1044
dam: **WADDLES TRISTA 775**
 WULFS GUARDIAN 5074G
 WADDLES LEESA 1095
 WADDLES JAYCEE 979

CLA EPDs				Estimated Progeny EPDs			
Gest	-4	SC	0.9	Gest	-5.5	SC	0.9
CED	9	ST	11	CED	11.5	ST	10.5
BW	2.7	DOC	14	BW	0.9	DOC	11.5
WW	74	YG	-0.67	WW	73	YG	-0.69
YW	115	CW	20	YW	105	CW	19.5
MK	21	REA	1.45	MK	23	REA	1.38
TM	58	MB	-0.08	TM	59.5	MB	-0.18
CEM	4	FT	-0.1	CEM	6	FT	-0.12



RLF YARDLEY 601Y
 PLNS POLLED ABRAHAM
 PLNS POLLED YAKIRA 25Y
sire: **PLNS POLLED EXECUTIONER 19E**
 TMF TRAVELER 742T
 TMF MISS 574X
 TMF MISS 623T
 HC FINAL TIME 407
 WULFS ZEPHYR X624Z
 WULFS SOLOIST 6284S
dam: **JYF MISS FLINTOFT 534C**
 TMF TECHNIC 47T
 TMF MISS 266W
 TOP MEADOW 107M

CLA EPDs				Estimated Progeny EPDs			
Gest	-3	SC	0.3	Gest	-5	SC	0.6
CED	6	ST	13	CED	10	ST	11.5
BW	3.8	DOC	18	BW	1.4	DOC	13.5
WW	70	YG	-0.56	WW	71	YG	-0.63
YW	104	CW	29	YW	99	CW	24
MK	21	REA	1.29	MK	23	REA	1.3
TM	56	MB	-0.04	TM	58.5	MB	-0.16
CEM	4	FT	-0.09	CEM	6	FT	-0.11

JYF GABRIELLA 524G Red Double Polled BW: 80 Adj WW: 633 Adj YW: 798
 JYF 524G CPF4102003 94% 11 Oct 2019

Red Executioner heifer. Her dam is another excellent Zephyr daughter that has a 111 lifetime index on her progeny. She has a balanced EPD profile and is bred to make you money.

A.I. Checking Account April 7 (safe) Exposed JYF Fiddler April 20-May 15



Executioner - Sire



Zephyr - Sire of Dam





SPRING PAIRS

Spring Calving cows are the heart of our program. We breed the spring calving cows from July 1 to August 30 to facilitate our sale of 2 year old bulls. Plus it is a lot easier to calve a large group of cows out on grass. These cows are raised to earn their keep and can cover a lot of ground if asked to.

We have selected females that have Gold Rush heifers at side. They sell bred the same way so the guesswork has been taken out of the equation.

CLA EPDs			Estimated Progeny EPDs		
Gest	-3	SC 1.1	Gest	-2.5	SC 1.3
CED	6	ST 16	CED	7	ST 16.5
BW	4.4	DOC 21	BW	3.4	DOC 20
WW	72	YG -0.6	WW	74	YG -0.63
YW	109	CW 38	YW	108	CW 39.5
MK	21	REA 1.54	MK	25	REA 1.6
TM	57	MB -0.19	TM	62	MB -0.31
CEM	2	FT -0.09	CEM	3.5	FT -0.1



LOT 19

HC OVERTIME 972
HC FINAL TIME 407
HC POLLED CANDY 763
sire: WULFS ZEPHYR X624Z
WULFS NOBEL PRIZE 3861N
WULFS SOLOIST 6284S
WULFS JOY BELLS 9202J

RPY PAYNES ROUGH RIDER 40
TMF TRAVELER 742T
JYF RAE
dam: MISS FLINTOFT 139X
ROMN MADE TO ORDER
TMF SHERRY 105S
JYF LEONE

JYF CANTATA 145C

Red

Double Polled

BW: 86

Adj WW: 670

Adj YW: 970

JYF 145C CPF4077575 92% 12 June 2015

Here is a Zephyr daughter out of the dam of JYF Big Timber 47B. Like many great ones her granddam is a Made to Order daughter with a milk EPD of +33. Cantata has left several daughters in the herd to continue her legacy.

A.I. Anchor B Gold Rush June 30. Exposed Anchor B Gold Rush July 1 – Aug 25



Zephyr - Sire



Big Timber
Maternal Brother



Gold Rush
Service Sire

JYF JAZZY 322J

Red

Double Polled

BW: 95

JYF 322J CPF4111463 93% 14 April 2021

IVY'S BUBBA WATSON HTZ24B
B BAR AUSTIN HEALY 4D ET
B BAR POLLED UNIQUE
sire: ANCHOR B GOLD RUSH 48G
ANCHOR B "THE BOSS"
ANCHOR B BAILEY 21B
ANCHOR B ZAHARA



LOT 19A

CLA EPDs		
Gest	-3	SC 1.25
CED	7	ST 16
BW	3.2	DOC 20
WW	74	YG -0.62
YW	108	CW 40
MK	25	REA 1.6
TM	62	MB -0.3
CEM	4	FT -0.1

First Gold Rush progeny to sell. Beautiful heifer with an excellent EPD profile. She sports a docility EPD in the top 1% of the breed. A performance heifer with loads of future.



TMF KODIAK 210K
 DONNA VALLEY POLL DICTATOR
 DONNA VALLEY POLL WHITE HOPE
sire: BIRUBI JUPITA J15
 WULFS GUARDIAN 5074G
 LLOYD'S BLACK POLLED WUNDA
 LLOYD'S FIFI T853

WULFS UNABRIDGED 6093U
 WULFS YALTON 7480Y
 WULFS TEAL BLUE 7480T
dam: JYF AMBROSIA I18Y
 TMF SYMBOL 188S
 JYF 5Y
 TOP MEADOW 278K

CLA EPDs				Estimated Progeny EPDs			
Gest	-3	SC	0.75	Gest	-2.5	SC	1.1
CED	8	ST	15	CED	8	ST	16
BW	3.2	DOC	14	BW	2.8	DOC	16.5
WW	66	YG	-0.62	WW	71	YG	-0.64
YW	100	CW	17	YW	104	CW	29
MK	23	REA	1.33	MK	26	REA	1.5
TM	56	MB	-0.16	TM	61.5	MB	-0.29
CEM	4	FT	-0.09	CEM	4.5	FT	-0.1

JYF ECSTASY 2E Black Double Polled BW: 80 Adj WW: 618
 JYF 2E CPF4087881 92% 07 April 2017

This Birubi Jupita daughter is doing an excellent job in production. She has a daughter selling as Lot 24. Ecstasy has a 107 weaning index early in her production cycle. Yalton and Made to Order on the bottom side of the pedigree insures consistent productivity.

A.I. Anchor B Gold Rush June 29. Exposed July 1 – Aug 25 Anchor B Gold Rush



JYF JEWEL 326J Red Double Polled BW: 80
 JYF 326J CPF4111465 93% 15 April 2021

A very complete Gold Rush daughter with tons of muscle shape. Expect her to be a powerhouse when she gets into production. We would like to campaign this heifer at Agribition for the new owner at our expense.



IVY'S BUBBA WATSON HTZ24B
 B BAR AUSTIN HEALY 4D ET
 B BAR POLLED UNIQUE
sire: ANCHOR B GOLD RUSH 48G
 ANCHOR B "THE BOSS"
 ANCHOR B BAILEY 21B
 ANCHOR B ZAHARA

CLA EPDs			
Gest	-3	SC	1.07
CED	8	ST	16
BW	2.7	DOC	17
WW	71	YG	-0.64
YW	104	CW	29
MK	26	REA	1.5
TM	62	MB	-0.29
CEM	4	FT	-0.1



BIG TIME COWS *make*



JYF Yieldmaster 80Y



JYF Yaggermeister 150Y



JYF Zeek 151Z



JYF Cornwall 28C



JYF Yuri 13Y



JYF Edmonton 519E



JYF Federal 614F



JYF Bookmark 115B



Denver 2018



JYF Dead Head 296D



JYF Campbell 3C



JYF Entity 524E



JYF Dimension 602D



JYF Debonair 604D



JYF Deadeye 624D



JYF Extra Chunk 518E



JYF Franchise 612F



JYF Dedicate 217D



JYF Big Chunk 510E



JYF Chunk 35C



JYF Big Timber 47B

BIG TIME BULLS



HC OVERTIME 972
 HC FINAL TIME 407
 HC POLLED CANDY 763
sire: WULFS ZEPHYR X624Z
 WULFS NOBEL PRIZE 3861N
 WULFS SOLOIST 6284S
 WULFS JOY BELLS 920J
 KAJO RESPONDER I20R
 AHCC WOOD MOUNTAIN W796
 EXLR 794H
dam: JYF 207Z
 TMF KODIAK 210K
 TOP MEADOW 518P
 CVR LADY HANS CHOICE 479H

CLA EPDs			Estimated Progeny EPDs		
Gest	-2	SC 0.6	Gest	-2	SC 1
CED	7	ST 17	CED	7.5	ST 17
BW	3.4	DOC 15	BW	2.9	DOC 17
WW	71	YG -0.65	WW	73	YG -0.65
YW	107	CW 32	YW	107	CW 36.5
MK	29	REA 1.6	MK	29	REA 1.63
TM	64	MB -0.09	TM	65.5	MB -0.26
CEM	4	FT -0.09	CEM	4.5	FT -0.1

LOT 21

JYF DOWNTOWN 250D Red Double Polled BW: 84 Adj WW: 674 Adj YW: 948
 JYF 250D CPF4083483 93% 22 April 2016

Check out the EPD's on this Zephyr daughter! She also has a 104 weaning index on her progeny as she hits her prime production years. Her dam is moving into our donor pen this year. She has a 2020 born Executioner son who will highlight our 2022 bull sale. Tremendous future ahead for this young female.

A.I. Anchor B Gold Rush June 30. Exposed Anchor B Gold Rush July 1 – Aug 25



Zephyr - Sire



JYF 167H - Son



Gold Rush Service Sire

JYF JENNY 321J Red Double Polled BW: 87
 JYF 321J CPF4111462 93% 14 April 2021

Top 10% in the breed for weaning weight, yearling weight, milk, scrotal, docility and REA EPDs. Jenny is straight in her lines and destined to be a matriarch of the future. We are excited to watch her grow!



IVY'S BUBBA WATSON HTZ24B
 B BAR AUSTIN HEALY 4D ET
 B BAR POLLED UNIQUE
sire: ANCHOR B GOLD RUSH 48G
 ANCHOR B "THE BOSS"
 ANCHOR B BAILEY 21B
 ANCHOR B ZAHARA

CLA EPDs		
Gest	-2	SC 1
CED	7	ST 17
BW	2.8	DOC 17
WW	74	YG -0.65
YW	108	CW 36
MK	29	REA 1.63
TM	66	MB -0.26
CEM	4	FT -0.1

LOT 21A



ROMN SYSTEMATIC I185
 SYES WORK HORSE 936W
 RPLF JULIA 936J
sire: **SCCJ ARCADE 394A**
 CARROUSELS NASDAQ
 SCCJ SKY 669S
 JBAK LADY SURE SHOT 660L
 EXLR POLLED AUSTIN 265J
 HIGHLAND REWARD
 NP LADY EDELLA 0932H
damm: **TMF MISS 265W**
 MR SYES GRID IRON I13G
 JYF KOTO
 JYF MISS TELSTAR

CLA EPDs			Estimated Progeny EPDs		
Gest	-2	SC 1.2	Gest	2	SC 1.3
CED	7	ST 15	CED	7.5	ST 16
BW	3.6	DOC 15	BW	3	DOC 17
WW	61	YG -0.55	WW	68	YG -0.6
YW	74	CW 14	YW	91	CW 275
MK	30	REA 1.02	MK	29.5	REA 1.34
TM	61	MB -0.02	TM	64	MB -0.22
CEM	3	FT -0.1	CEM	4	FT -0.1

JYF DEBORAH 249D

Double Black Double Polled

BW: 90 Adj WW: 659 Adj YW: 827

JYF 249D CPF4083515 93% 22 April 2016

Moderate framed Arcade daughter doing a whale of a job on her progeny. She has a 107 weaning index on her progeny heading into peak production years. Her dam has a +36 for milk and is showing Deborah the way to production longevity. Deborah has an excellent SYES Freeman heifer that we are breeding to take her place in our herd.

A.I June 30 Anchor B Gold Rush. Exposed Anchor B Gold Rush July 1- Aug 25.



Arcade - Sire



Gold Rush - Service Sire

JYF JADE 318J

Black Double Polled

BW: 80

JYF 318J CPF4111461 93% 13 April 2021

Jade is a favorite of everyone who tours the cow herd. Her balance and femininity make for an excellent junior project as she develops into a super cow. We are very happy with the Gold Rush progeny especially if we can keep getting females like Jade.



IVY'S BUBBA WATSON HTZ24B
 B BAR AUSTIN HEALY 4D ET
 B BAR POLLED UNIQUE
sire: **ANCHOR B GOLD RUSH 48G**
 ANCHOR B "THE BOSS"
 ANCHOR B BAILEY 21B
 ANCHOR B ZAHARA

CLA EPDs		
Gest	-2	SC 1.3
CED	7	ST 16
BW	2.9	DOC 17
WW	68	YG -0.6
YW	91	CW 28
MK	30	REA 1.34
TM	64	MB -0.22
CEM	4	FT -0.1



SPRING BRED HEIFERS

We breed heifers to calve at 2 years of age in our program. We have included some pieces of our genetic pie for your appraisal. They were A.I.'d to LFLC Checking Account, and exposed to a bull you are going to hear a lot more about in the future, JYF Hacker 100H



JYF HIGHLIGHT 142H

Black

Polled

JYF 142H CPF4105354 92% 15 April 2020 BW: 94 Adj WW: 736

sire: JYF EDMONTON 519E
 DONNA VALLEY POLL DICTATOR
 BIRUBI JUPITA J15
 LLOYD'S BLACK POLLED WUNDA
 MAGS WAR ADMIRAL
 HSF YALENA
 HSF UNBRIDLED PASSION

dam: SQUIRREL CREEK 26B
 WULFS UNABRIDGED 6093U
 WULFS YALTON 7480Y
 WULFS TEAL BLUE 7480T
 AMAGLEN XACT
 CAM POLL BLACK ZITA
 CAM POLL WEALTH

A JYF Edmonton daughter out of a cow who has entered our donor program. Highlight is fault free in her design and a powerhouse bred heifer. Her dam has a 110 weaning index in production.

A.I. LFLC Checking Account July 1 (Safe) Exposed JYF Hacker 100H July 5 -Aug 29

CLA EPDs				Estimated Progeny EPDs			
Gest	-3	SC	0.8	Gest	-5	SC	0.8
CED	3	ST	12	CED	8.5	ST	11
BW	5	DOC	16	BW	2	DOC	12.5
WW	69	YG	-0.64	WW	71	YG	-0.67
YW	105	CW	24	YW	100	CW	21.5
MK	28	REA	1.44	MK	26.5	REA	1.37
TM	62	MB	-0.11	TM	61.5	MB	-0.19
CEM	2	FT	-0.09	CEM	5	FT	-0.11



Edmonton - Sire



CCM 26B - Dam



Checking Account - Service Sire



LOT 24

JYF HOSANNA 103H

Black

Double Polled

JYF 103H CPF4105240 91% 04 April 2020 BW: 78 Adj WW: 692

HUNT ROSS 42R
HUNT TESTAMENT 40T
HUNT RUTH 07R
sire: HUNT CREDENTIALS 37C ET
WULFS SIGNATURE 9302S
JKTW WHISKEY RIVER 985 W
JKTW RADDISON 6602R

DONNA VALLEY POLL DICTATOR
BIRUBI JUPITA J15
LLOYD'S BLACK POLLED WUNDA
dam: JYF ECSTASY 2E
WULFS YALTON 7480Y
JYF AMBROSIA 118Y
JYF 5Y

A Hunt Credential heifer out of lot 20! Excellent EPD profile with a marbling EPD in the top 2% of the breed. Hosanna is a very complete female who is strait in her lines, very sound in her structure and tight in her neck. Carrying the service of the exciting JYF Hacker 100H

Observed July 22 JYF Hacker 100H Exposed JYF Hacker July 5 – Aug 29

CLA EPDs				Estimated Progeny EPDs			
Gest	-5	SC	1.07	Gest	-4	SC	0.9
CED	11	ST	12	CED	11.5	ST	13.5
BW	1.9	DOC	16	BW	0.4	DOC	13.5
WW	72	YG	-0.46	WW	67	YG	-0.44
YW	109	CW	30	YW	99	CW	26.5
MK	28	REA	1.01	MK	22	REA	1.04
TM	64	MB	0.11	TM	55.5	MB	-0.07
CEM	7	FT	-0.09	CEM	7.5	FT	-0.07



Credential - Sire



JYF 2E - Dam



JYF Hacker - Service Sire



HC FINAL TIME 407
 WULFS ZEPHYR X624Z
 WULFS SOLOIST 6284S
sire: **JYF CHUNK 35C**
 CLLL NEW DIRECTION 394P
 TMF MISS 186W
 TOP MEADOW 412M
 G13 STRUCTURE
 LAGRAND MAF ANTIDOTE 5775
 MAPLELANE FOREVERLADY 277
dam: **JYF 17Y**
 CARROUSELS LOW RIDER
 SY JASY RAVEN 16R
 JASY NYLA 99N

CLA EPDs				Estimated Progeny EPDs			
Gest	-3	SC	1.35	Gest	-5	SC	1.1
CED	6	ST	12	CED	10	ST	11
BW	2.1	DOC	17	BW	0.6	DOC	13
WW	71	YG	-0.5	WW	72	YG	-0.60
YW	104	CW	27	YW	99	CW	23
MK	19	REA	1.18	MK	22	REA	1.24
TM	55	MB	0	TM	58	MB	-0.14
CEM	2	FT	-0.08	CEM	5	FT	-0.11

JYF HEAVEN SENT 135H Black Double Polled
 JYF 135H CXF4105347 69% 15 April 2020

Here is a chunk heifer that is a dream to be around. Her dam has been a consistent producer who keeps bringing in the good ones year after year.
A.I. LFLC Checking Account July 1 Exposed JYF Hacker 100H July 5- Aug 29

BW: 85 Adj WW: 737



Chunk - Sire



Checking Account

JYF HONEYDEW 162H Red Double Polled
 JYF 162H CPF4105374 93% 23 April 2020

JYF Enigma daughter that is in the top 1% of the breed for milk EPD. Excellent birth to yearling spread gives her endless breeding possibilities. Super docile.

Observed July 15 JYF Hacker 100H Exposed JYF Hacker July 5- Aug 29

BW: 75 Adj WW: 766



Enigma - Sire



Hacker - Service Sire



HUNT MR JOCK 441
 WULFS AMAZING BULL T341A
 WULFS ULTRA DIAMOND 857IU
sire: **JYF ENIGMA 706E ET**
 ROMN MADE TO ORDER
 TMF MISS 125U
 TOP MEADOW 411M
 TREF ADONIS 266A
 CRVL CLASSIC 544C
 CRVL MISS PURE GOLD 156Y
dam: **JYF ENJOY 86E**
 KING WULF 8274Y
 JYF BLOSSOM 75B
 TMF MISS 137W

CLA EPDs				Estimated Progeny EPDs			
Gest	-3	SC	1.23	Gest	-3	SC	1
CED	11	ST	14	CED	11.5	ST	14.5
BW	1.3	DOC	18	BW	0.1	DOC	14.5
WW	72	YG	-0.68	WW	67	YG	-0.55
YW	106	CW	21	YW	98	CW	22
MK	34	REA	1.46	MK	25	REA	1.26
TM	70	MB	-0.31	TM	58.5	MB	-0.28
CEM	7	FT	-0.1	CEM	7.5	FT	-0.08



LOT 27

JYF HARMONY 118H

Red

Double Polled

JYF 118H CPF4105256 93% 10 April 2020 BW: 67 Adj WW: 590

sire: JYF EDMONTON 519E
 DONNA VALLEY POLL DICTATOR
 BIRUBI JUPITA J15
 LLOYD'S BLACK POLLED WUNDA
 MAGS WAR ADMIRAL
 HSF YALENA
 HSF UNBRIDLED PASSION

dam: JYF BAZAAR 77B
 TMF SYMBOL 188S
 JYF YIELDMASTER 80Y
 AIRLIE TARA
 AHCC WESTWIND W544
 JYF 505Y
 TMF MISS 232W

CLA EPDs				Estimated Progeny EPDs			
Gest	-3	SC	0.2	Gest	-3	SC	0.4
CED	11	ST	14	CED	11.5	ST	14.5
BW	-0.1	DOC	7	BW	-0.6	DOC	9
WW	54	YG	-0.58	WW	58	YG	-0.5
YW	85	CW	17	YW	87	CW	20
MK	28	REA	1.23	MK	22	REA	1.15
TM	55	MB	-0.04	TM	51	MB	-0.15
CEM	6	FT	-0.09	CEM	7	FT	-0.07

An Edmonton daughter out of a Yieldmaster daughter. Yieldmaster daughters have made excellent mama cows. A minus for birth and a 28 for milk should make for multiple sire opportunities. Should have one of the first Hacker calves.

Observed July 10 JYF Hacker 100H Exposed JYF Hacker 100H July 5 – Aug 29



Edmonton - Sire



Yieldmaster - Sire of Dam



JYF Hacker - Service Sire

LOT 28

Selling CHOICE OF LOTS A, B OR C

One of the most prolific donor cows in the Limousin breed is Wulfs Soloist 6284S, She has over 248 registered progeny, with multiple sons working to improve the Limousin breed. Some of her progeny include: Wulfs Wahpeten, Wulfs Yankee, Wulfs Yellow Jacket, Wulfs Zephyr, Wulfs Compliant, Wulfs Fiat, etc. etc. Combine that with all the females destined to become donor females themselves like the likes of Wulfs Your Choice and you have a matriarch whose history may never be matched.

JYF Edmonton was a high selling bull in our 2020 bull sale. Jack Glendenning of J Bar J Limousin in Missouri has US semen rights and incorporated him into his impressive program. Edmonton is admired for his depth of body and softness throughout. He has a very calm disposition. He is a performance piece that can be used to improve growth and milk.

We feel very fortunate to be able to offer your choice of the three heifer calves by JYF Edmonton and Wulfs Soloist. These progeny were born in late April at MTC Cattle Co. in Derwent Alberta. Your final selection does not have to be made until March 1, 2022. We want to wean the heifers and grow them out so you have the ability to make the best decision possible. We hope that your selection will follow in one of the greats footsteps and continue her legacy.



Wulfs Soloist - Dam

sire: JYF EDMONTON 519E
 DONNA VALLEY POLL DICTATOR
 BIRUBA JUPITA J15
 LLOYD'S BLACK POLLED WUNDA
 MAGS WAR ADMIRAL
 HSF YALENA
 HSF UNBRIDLED PASSION

dam: WULFS SOLOIST 6284S
 COLE WULF HUNT
 WULFS NOBEL PRIZE 3861N
 WULF'S CASUAL 3161C
 WULFS EVAN 9052E
 WULFS JOY BELLS 9202J
 WULFS ENJOYABLE 5009E

28A

JYF 801J
 JYF 801J 92% April 21, 2021
 Red Polled BW: 74

28B

JYF 802J
 JYF 802J 92% April 24, 2021
 Red Polled BW: 77

28C

JYF 803J
 JYF 803J 92% April 30, 2021
 Red Polled BW: 70

Projected EPDs			
Gest	-2	SC	0.2
CED	8	ST	11
BW	2.7	DOC	13
WW	66	YG	-0.65
YW	92	CW	26
MK	32	REA	1.44
TM	64.5	MB	-0.02
CEM	3	FT	-0.11



JYF Edmonton - Sire



Wulfs Yankee - Maternal Brother



Zephyr - Maternal Brother



Compliant - Maternal Brother



Wulfs Your Choice - Maternal Sister



LOT 28A



LOT 28B

Selling Choice



LOT 28C



JYF 804J - Flushmate



FALL OPEN HEIFERS

In order to make this a true “Piece of the Pie” sale we are offering a slice of all parts of our program. Our open fall heifers are offered as early breeding opportunities for your program. The majority are the first progeny offered out of SYES Freeman 104F. He was the lead off and high selling bull in the Symens Brothers sale in South Dakota. His first sons will sell in the 2022 bull sale.



“2021 Halter Breaking Crew”

Annrick Lascelles, Jessica Schefield, Rosalie Lafreniere





LOT 29

JYF HELLO DOLLY 613H ET

Red

Homo Polled

JYF 613H CPF4110893 93% 18 Sept 2020 BW: 80 Adj WW: 727

HC FINAL TIME 407
WULFS ZEPHYR X624Z
WULFS SOLOIST 6284S
sire: JYF CHUNK 35C
CLLL NEW DIRECTION 394P
TMF MISS 186W
TOP MEADOW 412M

ROMN FORTUNE
ROMN JUSTICE
ROMN LADY ROCK 57G
dam: SY RED HOT 378R
DEVONS THE REAL DEAL
SY 204M
SY ANYTIME 454H

CLA EPDs			
Gest	-3	SC	1.45
CED	11	ST	16
BW	2.5	DOC	17
WW	63	YG	-0.58
YW	99	CW	25
MK	22	REA	1.39
TM	53	MB	-0.15
CEM	4	FT	-0.08

Right from the middle of our transplant program comes Hello Dolly. Her depth of body and straight lines make her extremely attractive from end to end. Add in a disposition second to none and she has unlimited potential. We would like to campaign Hello Dolly this fall for the new owner at our expense.



JYF Chunk - Sire



JYF 121B (Lot 2) - Maternal Sister



Cornwell - Maternal Brother



JYF Yuri - Maternal Brother



LOT 30

JYF HEIDI 617H

JYF 617H CPF4109758 92% 20 Sept 2020 BW: 70 Adj WW: 638

Red

Het Polled (T)

sire: **SYES FREEMAN 104F**
 WULFS WILLARD 5115W
 WULFS COMPLIANT K687C ET
 WULFS SOLOIST 62845
 ROMN WALK THE WALK 101W
 MISS SYES ABBEY 304A
 MISS SYES NIGHT OWL 100S

dam: **JYF MISS FLINTOFT 612D**
 HC FINAL TIME 407
 WULFS ZEPHYR X624Z
 WULFS SOLOIST 62845
 ROMN MADE TO ORDER
 TMF TRICK 264T
 JYF KIMBERLEY

CLA EPDs			
Gest	-2	SC	0.8
CED	10	ST	13
BW	1.5	DOC	16
WW	71	YG	-0.72
YW	105	CW	26
MK	32	REA	1.75
TM	67	MB	-0.31
CEM	6	FT	-0.09

Check out the numbers on Heidi! Out of a picture perfect Zephyr x Made to Order daughter that is a standout in early production. A maternal brother JYF Greenlight 519G sold to Albert Hapke at the top of our 2021 bull sale. Buy with confidence.



Freeman - Sire



JYF 612D - Dam



JYF 519G - Maternal Brother to Albert Hapke



LOT 31

JYF HEAVAN 624H

Red

Homo Polled (T)

JYF 624H CPF4109761 92% 24 Sept 2020 BW: 82 Adj WW: 628

WULFS WILLARD 5115W
WULFS COMPLIANT K687C ET
WULFS SOLOIST 6284S
sire: **SYES FREEMAN 104F**
ROMN WALK THE WALK 101W
MISS SYES ABBEY 304A
MISS SYES NIGHT OWL 100S

MRL X-RATED 014X
COLE ARCHITECT 08A
COLE MISS LODESTAR 826U
dam: **RPY PAYNES EMOTION 29E ET**
WULFS REVOLVER 1219R
RPY PAYNES WILL I DO 23W
IVY'S POLLED PRINCESS 1P

CLA EPDs			
Gest	-3	SC	0.82
CED	6	ST	15
BW	4.8	DOC	18
WW	78	YG	-0.68
YW	107	CW	26
MK	23	REA	1.62
TM	62	MB	-0.17
CEM	4	FT	-0.09

This Homo Polled Freeman, is out of the champion show heifer from Rocky and Debbie Payne of Lloydminster. We wanted a "Will I Do" daughter in our program and were able to purchase Emotion at Agribition in Regina. The Freeman cross has really worked creating an interesting breeding piece in Heavan.



Freeman - Sire



RPY Emotion 29E - Dam



RPY 23W - Granddam



LOT 32

JYF HADDIE 625H

Red Homo Polled (T)

JYF 625H CPF4109762 93% 25 Sept 2020 BW: 78 Adj WW: 665

sire: **SYES FREEMAN 104F**
 WULFS WILLARD 5115W
 WULFS COMPLIANT K687C ET
 WULFS SOLOIST 62845
 ROMN WALK THE WALK 101W
 MISS SYES ABBEY 304A
 MISS SYES NIGHT OWL 100S

dam: **JYF ELSA 24E**
 KING WULF 8274Y
 JYF BIG TIMBER 47B
 MISS FLINTOFT 139X
 ROMN MADE TO ORDER
 TMF MISS 125U
 TOP MEADOW 411M

CLA EPDs			
Gest	-3	SC	0.8
CED	7	ST	14
BW	1.3	DOC	15
WW	66	YG	-0.62
YW	98	CW	16
MK	29	REA	1.47
TM	62	MB	-0.15
CEM	6	FT	-0.07

We flushed Haddie's granddam several ways and Elsa 24E is her natural calf by Big Timber. We think that Freeman has moderated the huge performance on the dam side to create a beautiful breeding opportunity. Haddie is Homo Polled with an excellent EPD profile.



Freeman - Sire



JYF 24E - Dam



Big Timber - Sire of Dam



WULFS WILLARD 5115W
 WULFS COMPLIANT K687C ET
 WULFS SOLOIST 6284S
sire: **SYES FREEMAN 104F**
 ROMN WALK THE WALK 101W
 MISS SYES ABBEY 304A
 MISS SYES NIGHT OWL 100S

WULFS UNABRIDGED 6093U
 WULFS YALTON 7480Y
 WULFS TEAL BLUE 7480T
dam: **JYF MISS FLINTOFT 506C**
 D&M ENDZONE 3J
 TMF MISS 602T
 CWP POLLED BLACK HOLLY

CLA EPDs			
Gest	-2	SC	0.8
CED	8	ST	19
BW	1.7	DOC	15
WW	68	YG	-0.69
YW	100	CW	16
MK	24	REA	1.56
TM	58	MB	-0.13
CEM	6	FT	-0.09

JYF HEDVIG 603H

Black Homo Polled (T) BW: 75 Adj WW: 731

JYF 603H CPF4109748 91% 06 Sept 2020

Homo Polled Freeman daughter. Her dam sells as lot 7! Should add muscle with a ribeye EPD in the top 1% of the breed. She had a birth weight of 75# and a weaning weight of 731! Hedvig is an interesting breeding piece that will be fun to work with into the future.



Freeman - Sire



506C (Lot 7) - Dam



JYF 527G Maternal Brother

JYF HOPE 604H

Red Homo Polled (T) BW: 77 Adj WW: 639

JYF 604H CPF4109749 92% 06 Sept 2020

A beautiful Homo Polled Freeman daughter. She is out of an excellent Axel Rose female who raised a calf with a broken leg that we included in our weaning groups which really hurt her numbers. I know her dam is a great one, but on paper she will be a long time proving it because of our mistake. This heifer is going to make a great cow.



Freeman - Sire



JYF 318D - Dam



Axel Rose Sire of Dam



WULFS WILLARD 5115W
 WULFS COMPLIANT K687C ET
 WULFS SOLOIST 6284S
sire: **SYES FREEMAN 104F**
 ROMN WALK THE WALK 101W
 MISS SYES ABBEY 304A
 MISS SYES NIGHT OWL 100S

WULFS XTRACTOR X233X
 EXCEL POLLED AXEL ROSE
 EXCEL POLLED THIMBLE
dam: **JYF MISS FLINTOFT 318D**
 WULF TRAXX S512T
 JYF 115Z
 ANCHOR B SKY AT DAWN

CLA EPDs			
Gest	-2	SC	0.5
CED	7	ST	16
BW	0.9	DOC	15
WW	59	YG	-0.6
YW	84	CW	21
MK	24	REA	1.28
TM	53	MB	-0.06
CEM	5	FT	-0.1



WULFS WILLARD 5115W
 WULFS COMPLIANT K687C ET
 WULFS SOLOIST 6284S
sire: **SYES FREEMAN 104F**
 ROMN WALK THE WALK 101W
 MISS SYES ABBEY 304A
 MISS SYES NIGHT OWL 100S

WULFS TITUS 2149T
 WULFS YAK THE BLACK T108Y
 TECS TYPHON 734
dam: **EXCEL POLLED BLACK BEAUTY**
 DC POLLED SNIPER
 EXCEL POLLED WISHFUL
 EXCEL POLLED THIMBLE

CLA EPDs			
Gest	-3	SC	0.38
CED	9	ST	17
BW	1.9	DOC	12
WW	69	YG	-0.74
YW	101	CW	30
MK	27	REA	1.92
TM	61	MB	-0.1
CEM	7	FT	-0.08

JYF HEATHER 606H Red Homo Polled (T) BW: 77 Adj WW: 657
 JYF 606H CPF4109751 93% 07 Sept 2020

Another polled Freeman out of a Yack the black female we purchased from Excel Ranches. XLR 412B has been above average in production. Heather is in the top 20% of the breed for weaning, yearling, milk and ribeye. Should have a bright future.



JYF HAILEY 601H Red Het Polled (T) BW: 72 Adj WW: 702
 JYF 601H CPF4109746 93% 30 Aug 2020

A Freeman out of our super milking 105A. Maternal sister working for Lazy A Limousin. Hailey has an excellent EPD profile and should turn into a great cow.



WULFS WILLARD 5115W
 WULFS COMPLIANT K687C ET
 WULFS SOLOIST 6284S
sire: **SYES FREEMAN 104F**
 ROMN WALK THE WALK 101W
 MISS SYES ABBEY 304A
 MISS SYES NIGHT OWL 100S

WULFS RANSOM 3059R
 WULFS WARDEN N502W
 PLND RAZZMATAZZ 502R
dam: **JYF ADORE 105A**
 ROMN MADE TO ORDER
 TMF MISS 175U
 TOP MEADOW 1001P

CLA EPDs			
Gest	-3	SC	0.55
CED	8	ST	13
BW	2.9	DOC	15
WW	71	YG	-0.67
YW	97	CW	35
MK	28	REA	1.7
TM	63	MB	-0.42
CEM	6	FT	-0.09



WULFS WILLARD 5115W
 WULFS COMPLIANT K687C ET
 WULFS SOLOIST 6284S
sire: **SYES FREEMAN 104F**
 ROMN WALK THE WALK 101W
 MISS SYES ABBEY 304A
 MISS SYES NIGHT OWL 100S

HC FINAL TIME 407
 WULFS ZEPHYR X624Z
 WULFS SOLOIST 6284S
dam: **JYF CHRISTINA 94C**
 RADS BLACK PRODIGY
 EXLR GINA 502P
 CANE RIDGE GINA 6536F

CLA EPDs			
Gest	-2	SC	0.5
CED	8	ST	19
BW	2	DOC	14
WW	62	YG	-0.7
YW	84	CW	15
MK	26	REA	1.53
TM	57	MB	-0.26
CEM	6	FT	-0.09

JYF HEIRLEEN 627H

Red Homo Polled (T)

BW: 80 Adj WW: 693

JYF 627H CPF4109763 91% 27 Sept 2020

Heirleen's dam is another Zephyr daughter out of EXLR Gina 502P from Express Ranches. She has been a consistent producer every year. Heirleen is homo polled with a bright future.



Freeman - Sire



Zephyr - Sire of Dam

JYF HONOR 638H

Red Het Polled (T)

BW: 83 Adj WW: 632

JYF 638H CPF4109773 93% 12 Oct 2020

This is the youngest heifer in this group, and would make a fun junior project. She has a pedigree loaded with milk and should turn into a great cow. She also has a great disposition. The breeding possibilities are limitless.



Edmonton - Sire



JYF 713E - Dam



641R - Full Sib to Dam



DONNA VALLEY POLL DICTATOR
 BIRUBI JUPITA J15
 LLOYD'S BLACK POLLED WUNDA
sire: **JYF EDMONTON 519E**
 MAGS WAR ADMIRAL
 HSF YALENA
 HSF UNBRIDLED PASSION

ROMN JUSTICE
 ROMN MADE TO ORDER
 ROMN MISS THICK 34K
dam: **JYF ESSENCE 713E ET**
 EAFF REJUVENATOR 260J
 JBAK 671M
 JBAK FANCY LOOKER 652D

CLA EPDs			
Gest	-2	SC	0.72
CED	6	ST	10
BW	2.4	DOC	13
WW	55	YG	-0.54
YW	80	CW	37
MK	30	REA	1.31
TM	57	MB	-0.17
CEM	3	FT	-0.09

LOT 39

▶ 4 Embryos

PLAINS POLLED EXECUTIONER X JYF FANCY 816F

We have had multiple calls about semen on Plains Polled Executioner since his first progeny topped our 2021 bull sale. What you see is what you get with him, plus multiple traits you can't see in this picture. Executioner progeny have an excellent foot under them. They have a big paw up front and are very sound in their tracking.

There was no carcass data on Executioner when we bought him, so we were excited when the results came back on the progeny scanned at our place. As his picture shows he passes on his tremendous muscle but he is also in the top 10% of the breed for marbling.

We found Executioner to calve easy and bred him to cows that needed help in that direction. We believe in time his birth weight EPD will drop into the 2 range as we get more progeny on the ground.

The icing on the cake for us has been the disposition of his progeny. Executioner will improve dispositions! When singling out aged bulls to picture and video it became very obvious that his calming influence on his progeny is real.

JYF Fancy 816F is a product of our transplant program. Her dam was a moderate framed cow that flat out produced. She was a horned daughter of Wulfs Tailor Made 2107T. How many horned females get flushed in the Limousin Breed these days? 101W had a 114 lifetime weaning index on her progeny. One of the flushes was to JYF Big Timber 47B. Out of this came several super females who are making their mark on our program. Fancy excelled from the start, making it into the show pen. This April heifer showed against the January's at Agribition and stood 4th out of 12.

We think this flush has the potential for greatness and are proud to offer 4 embryos out of this mating. Embryos stored at Bow Valley Genetics and are available in Canada and the US.



Plains Polled Executioner - Sire



JYF Fancy 816F - Dam



JYF Gentry 507G - Paternal Brother



JYF Governor 301G - Paternal Brother



JYF Genre 504G - Paternal Brother



JYF Ginger 502G - Paternal Sister



Hacker



JYF 126H



JYF 167H



JYF 156H



JYF 160H



JYF 139H



JYF 607H



JYF 632H



JYF 610H



JYF 622H



JYF 618H



2022 BULL SALE
FEBRUARY 28

J Yorga Farms
Box 14
Flintoft, SK
S0H 1R0

CANADA		POSTES
POST		CANADA
	Postage paid Personalized Mail	Port payé Courrier personnalisé
9615489		

RETURN POSTAGE GUARANTEED
PORT DE RETOUR GARANTI

OCTOBER 16, 2021
FLINTOFT, SASKATCHEWAN



*Maxim
Browning*



PIECE *of the* PIE
Limousin Production Sale