

T R E E F

CELEBRATING

40  
*Years*

*In the Limousin breed*

**WHERE MUSCLE STILL MATTERS**  
**ANNUAL PRODUCTION SALE**

**FEBRUARY 11, 2023 • 1 P.M.**

at the ranch in Wetonka, South Dakota



# SALE INFORMATION

## VIEW AND BID ONLINE:

..... [www.dvauction.com](http://www.dvauction.com)

## SUPPLEMENT INFORMATION:

· Yearling Weights, Scrotal Measurements and Ultrasound data will be available sale day and online at [www.treftzlimousin.com](http://www.treftzlimousin.com).

## TRUCKING AND BOARDING:

- Free boarding on yearling bulls until fertility tested—generally by April 1, 2023. A charge of \$2.50 per day after that. Boarding no longer than May 1, 2023.
- **Fall and two-year-old bulls picked up or delivered by March 1, 2023.** A charge of \$5.00 per day after that. \$50 off on these bulls picked up sale day. Boarding no longer than May 1, 2023.
- Free delivery up to 150 miles on yearling bulls.
- Bred heifers and open heifers to be taken home sale day or shortly after.

## PURCHASER OBLIGATION:

- All animals are at risk of the purchaser once sale is made.
- Border fees out of the U.S. is the responsibility of buyer.

## HEALTH AND PAPERWORK:

- Vaccinations—(Spring) Vira-Shield 6 with Somnus, Pasteurella Preponse, Ultrabac 7; (Fall) Covexin 8, Inforce 3, Preponse. Booster-Vira-Shield 6+Somnus, Oral Wormer, Cylence and Cleanup Pour On
- Health papers and brand release furnished where required.
- Registration papers transferred to new owner.

## VIEWING, CATALOG AND VIDEOS:

- Catalog and videos of bulls can be viewed online at [www.treftzlimousin.com](http://www.treftzlimousin.com), [www.mcmarketingmanagement.com](http://www.mcmarketingmanagement.com) or [www.dvauction.com](http://www.dvauction.com)
- Buyers are encouraged to view the cattle any time prior to sale date in case of inclement weather sale day.

*All cattle sell under the standard terms and conditions of the North American Limousin Foundation.*

## AUCTIONEER:

Chisum Peterson ..... (605) 730-4214

## SALE CONSULTANT:

Kiley McKinna, MC Marketing Management ..... (402) 350-3447  
Wiley Fanta, MC Marketing Management ..... (320) 287-0751

## SPECIAL GUESTS:

Dean Summerbell, Heartland Limousin Assn..... (612) 963-3799  
Bev Summerbell, Heartland Limousin Assn..... (763) 232-9302  
Andy Rest, *Cattle Business Weekly* ..... (406) 670-5678  
Garth Waletich, Aberdeen Livestock..... (605) 290-3546  
Justin Dikoff, DV Auction ..... (605) 290-0635  
Merlin "Speed" Siegfried..... (605) 868-9266

## SALE-DAY PHONES:

Glenn Treftz..... (605) 380-0014  
Lori Hill ..... (785) 410-1899  
Kiley McKinna ..... (402) 350-3447  
Wiley Fanta ..... (320) 287-0751

## CONSULTING VETERINARIANS:

Dr. Tim Kruse, Wetonka Vet Clinic, Wetonka, SD ..... (605) 225-7176

## MORTALITY INSURANCE:

Mark Smith, Grassroots Insurance ..... (515) 229-5227

## HOTEL ACCOMMODATIONS:

Ramkota Hotel..... (605) 229-4040  
Hampton Inn..... (605) 262-2600  
Quality Inn..... (605) 277-1402  
Fairfield Inn..... (605) 229-9990

## AIRPORT SERVICE:

Aberdeen Regional Airport ..... (605) 626-7020

EPDs are dated 1/12/2023





# SALE INFORMATION

# TREFTZ WHERE MUSCLE STILL MATTERS ANNUAL PRODUCTION SALE

FEBRUARY 11, 2023

at the ranch in Wetonka, South Dakota  
(13 miles west and 9 miles north of Aberdeen, SD)

Lunch 11:30 a.m. • Sale 1:00 p.m.

## SELLING 60 BULLS

41 – Yearling Bulls

16 – 18-Month-Old Bulls

3 – 2-Year-Old Bulls

HOMO Polled

HOMO Black • Red

## SELLING 20 OPEN FEMALES

Dear Friends and Cattlemen,

We would like to welcome you to our annual bull sale at the ranch February 11, 2023. This year marks our 40th year in the Limousin breed. As evident on our history page in this catalog, the cattle have really changed. What has not changed is the people behind the program or the philosophy of our breeding program. We will always be committed to the breed and the name will always be Treftz Limousin. That's where our passion was in 1983 and still is in 2023.

For 4 decades, we have paid attention to consistency of the product. With consistency comes predictability. When you walk through a pen of bulls, the bulls at the end of the sale should look like the bulls at the beginning. Even and consistent bulls breed the same way and bring predictability to your table as well. It's taken a few generations, but I feel we are there.

When you read through the testimonials spread throughout the catalog, one common denominator is that these bulls are getting the job wherever they have gone. From the harsh cold in our backyard, to the Gulf of Texas, and from the mountains in Colorado to the deserts in Arizona, the bulls are performing in every environment. Reports are the cows are getting bred, the bulls are coming out of breeding season still looking like a bull, the calves are getting heavier and the bulls are behaving.

As you page through the catalog, you'll notice the extra stretch we have bred into the cattle. Length of body brings some serious weaning weights to the game without causing calving issues. Length of body helps maintain calving-ease with heavier calves. Assistance with cows is almost non-existent.

It's very gratifying getting calls from satisfied customers. It's also very rewarding getting calls from many young breeders just getting started. All have questions, some need advice, others it may be guidance, inspiration or encouragement. We were all there at one time and I still remember who my mentors are/were. It's another reason why I've been at this for the long haul. For all of us as breeders, it's important to pass on our knowledge to the next generation. They are not our competition, they are our beneficiaries. We are all blessed they want to carry the torch.

We had a very special addition to our family this summer, marking the first time a baby has crawled our floors since her mother did the same. Mila Wren has blessed us in countless ways. When you're having a bad day, all you have to do is look at their little innocent smile and all is good.

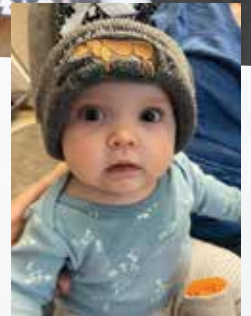
We only sell bulls one day out of the year so take advantage of that opportunity on sale day. Don't hesitate to call before the sale if you want to visit about a potential herd bull or heifer.

Hope to see you February 11!

Sincerely,  
The Treftz's



**GLENN TREFTZ**  
12510 370th Avenue • Wetonka, SD 57481  
Phone: 605-380-0014  
treftzlimousin.com



**SALE  
CONSULTANT:**

**M<sub>C</sub>**  
Marketing Management

KILEY MCKINNA  
402.350.3447  
WILEY FANTA  
320.287.0751  
648 West Sawgrass Trail  
Dakota Dunes, SD 57049  
mcmarketingsales@aol.com







The 18-month-old and two-year-old bulls are virgin bulls and are being offered for the first time. We try to carry over bulls as two-year-olds if they are born later in the spring. They have been on a grain ration of corn/dry distillers at a ratio of .075% of body weight and free choice prairie hay. They have been free roaming on a small pasture to keep them in optimal breeding condition.

The yearling bulls have had a similar diet of corn/dry distillers at less than 1% of body weight and the same free choice chopped hay. CTC medicated pellets are fed for five days every 45 days to keep the bulls healthy. They were weaned and put back on pasture until December 20. No silage is used in any of the bull rations.

The bulls will be fertility tested and will have been vaccinated with Bovi-shield Gold FP5/VL5, anthrax and twice for pinkeye and foot rot prevention prior to delivery. The older bulls will be trich tested for states where needed. All our cattle are on a complete Purina mineral program year around. Please let us know prior to delivery if there are required vaccinations for your area of the country that are important to you. We also pour the bulls monthly with different products to keep in ahead of lice and rubbing issues. Several of the top end bulls have been tested for the F94L Myostatin gene and the results are added in the footnotes.

Many of the bulls have been tested for the Homo polled and Homo black genes with the results listed on the pedigree of each bull.

We will keep the yearling bulls free of charge until April 1. After a satisfactory fertility exam, we will deliver the bulls with no cost to you up to 150 miles. Beyond that, we will work with you in getting your bulls delivered to an agreed upon central point. Please bring your trailer if you are thinking about purchasing a two-year-old bull, fall bull or open heifers as we would like to move them as soon as possible right after the sale. We will deduct \$50 for each bull taken home sale day. A veterinarian will be on hand to issue health papers where needed.

A supplement sheet will be available online and sale day with adjusted yearling weights, scrotal measurements, and ultrasound data. Be sure to go to our website [www.treftzlimousin.com](http://www.treftzlimousin.com) or [www.dvauction.com](http://www.dvauction.com) for updated pictures, videos and other data.

Again this year, we are including a calving-ease score based on a combination of pedigree, EPDs, and calving history from sire and dam.

**E - Recommended for cows only**

**EE - Should work on cows or heifers**

**EEE - A good choice for breeding heifers**



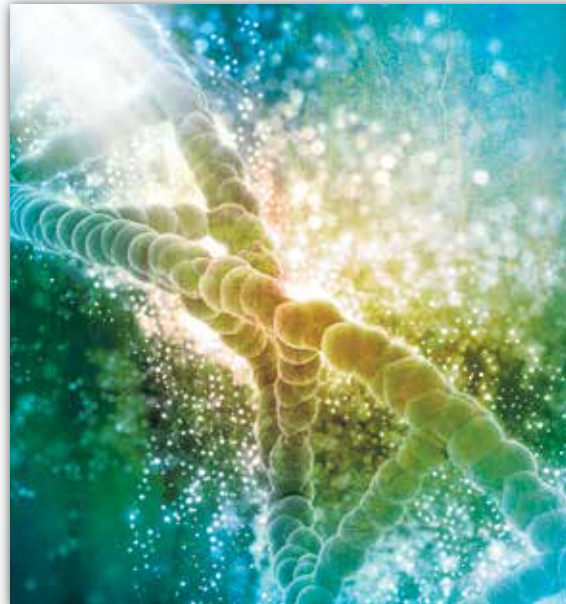
**Treftz Limousin—“Where Muscle Still Matters”**



# Did you know...

Sometimes you reap a benefit without even knowing. Did you know Limousin cattle have a distinct gene called myostatin found in all fullblood Limousin cattle and likely in many purebreds with muscle expression? The myostatin gene is responsible for muscling and tenderness, yes, TENDERNESS in our beef. Studies performed indicate an improvement of up to 19% of the Primal Cuts of a beef carcass carrying two copies of the myostatin variant F94L. The data also cites better feed conversion rates.

In our program, we use the



F94L as a tool for our breeding program. Over the years, we've tested several bulls and all have carried both copies. We feel confident this gene is inherent in our herd. As you will note, some of our top lots will carry the test result for the myostatin.

## How should you use the data?

If you want feeder calves that have increased thickness then you'll want to select genetics carrying two copies of the F94L, especially if your cow herd is British based.

## More For Less THE LIMOUSIN ADVANTAGE

In a time where prices for our cattle are struggling to stay above input costs, feed conversion and cattle that perform will always improve the bottom line. Over the last 35 years in the Limousin business, one of our main focuses is on performance with as little feed input as possible. Our efforts have paid off.

In 2016, we were asked by our local Purina Company to participate in a feed trial using a product called Accuration Starter CP HL (in a pellet) fed free choice on our weaning bull calves. Already knowing Limousin is a very feed efficient breed, we were shocked with the results at the end of the 27 day trial.

Below are the results of 520 trials Purina conducted with several different breeds and Treftz Limousin on the bottom row. See the difference quality Limousin cattle will produce!

	Start Weight	End Weight	Days on Feed	ADG	Feed Conversion	Accuration Intake/Day	Grain % of Body Wt.
520 Proofs	499	575	22	3.47	4.79 to 1	15.11 lbs.	2.86%
Treftz Proof	692	821	27	4.79	3.81 to 1	11.02 lbs.	1.46%



# YEARLING BULLS



LOT  
**1**

**1**

## TREF KINGSTON 1610K ET

LIM-FLEX(75/70.4) BULL · HET POLLED (T) · RED  
2/26/2022 · TREF1610K · LFM2521080

GV AUSTIN 701A  
**TOMV DIESEL 619D**  
MISS TOM 118Y

CV X-MAN 701X  
CV MISS LODESTAR 701T  
WULFS WAGON TRAIN 3197W  
MISS TOM 7106T

CF JIM DANDIE 216U  
**TREF BRYNN 075B**  
TREF 475

EAFF POLLED HUMMER 530P  
CF POLLED DANDIE 040P

**ACT BW**  
72

**ADJ WW**  
737

	CE	BW	WW	YW	MK	TM	CM	SC	DC	YG	CW	RE	MB	\$MTI
EPDS	8	3.7	89	142	29	74	8	.15	13	-.49	33	1.15	-.36	48
%Rank	90	>95	4	4	3	1	20	>95	50	2	55	5	>95	>95

**GE-EPDs**

TREF Kingston is the bull we landed on to start off our 2023 Bull Sale. This polled, red chunk is packed full of muscle and style. He exemplifies the power and look we strive to raise. Kingston is a Purebred (register eligible only as a 75% son of TOMV Diesel and a Jim Dandie daughter who moves out freely on a solid set of feet and legs. He excels in weaning and yearling weight with top 4% rankings, and ranks in the top 3% for milk and top 2% for yield grade! He will powerup your herd and give you a solid set of replacements for years to come, as well as sons that pound down the scales at weaning time. He is a full brother to Lots 2 and 3, and has another full brother doing a great job E] Steinke Ranches.

**CALVING EASE: E**  
**F94L MYOSTATIN 2**



**TREF BRYNN 075B** • Dam of Lot 1



Maternal grandam of Lots 1-5



**TOMV DIESEL 619D** • Sire of Lots 1-4



# YEARLING BULLS



2021 full sister to Lots 1-3



TREF BRYNN 075B • Dam of Lots 2 & 3



2

## TREF KEYSTONE 1618K ET

LIM-FLEX(75/70.4) BULL · HOMO POLLED (T) · RED  
2/20/2022 · TREF1618K · LFM2521083

GV AUSTIN 701A  
**TOMV DIESEL 619D**  
MISS TOM 118Y

GV X-MAN 701X  
GV MISS LODESTAR 701T  
WULFS WAGON TRAIN 3197W  
MISS TOM 7106T

CF JIM DANDIE 216U  
**TREF BRYNN 075B**  
TREF 475

EAFF POLLED HUMMER 530P  
CF POLLED DANDIE 040P

**ACT BW**  
92  
**ADJ WW**  
705

	CE	BW	WW	YW	MK	TM	CM	SC	DC	YG	CW	RE	MB	\$MTI
EPDS	8	3	78	124	29	68	7	.15	12	-.65	36	1.38	-.12	55
%Rank	90	95	25	25	3	5	35	>95	65	1	45	1	>95	80

TREF Keystone is another TOMV Diesel son from a Jim Dandie daughter, making him a full brother to Lots 1 and 3. Keystone is the homozygous polled version of these three brothers! He ranks in the top 3% for milk, top 25% for weaning and yearling, and top 1% for ribeye and yield grade. Lots of muscle shape and a strong top. If you're looking for uniformity in your herd and need more than one bull, these full brothers are for you!

**CALVING EASE: E**  
**F94L MYOSTATIN 2**

**GE-EPDS**

3

## TREF KANE 1805K ET

LIM-FLEX(75/70.4) BULL · HET POLLED (T) · RED  
2/13/2022 · TREF1805K · LFM2521081

GV AUSTIN 701A  
**TOMV DIESEL 619D**  
MISS TOM 118Y

GV X-MAN 701X  
GV MISS LODESTAR 701T  
WULFS WAGON TRAIN 3197W  
MISS TOM 7106T

CF JIM DANDIE 216U  
**TREF BRYNN 075B**  
TREF 475

EAFF POLLED HUMMER 530P  
CF POLLED DANDIE 040P

**ACT BW**  
89  
**ADJ WW**  
707

	CE	BW	WW	YW	MK	TM	CM	SC	DC	YG	CW	RE	MB	\$MTI
EPDS	5	6.3	90	142	29	74	6	.15	12	-.55	46	1.29	-.21	54
%Rank	>95	>95	3	4	3	1	55	>95	65	1	20	2	>95	80

TREF Kane is a full brother to Lots 1 and 2. He is big bellied with a powerful rear end. We like rugged looking bulls that will go out and add that to their calves. Kane exemplifies that. He ranks in the top 3% for weaning and milk, top 4% for yearling, top 2% for ribeye and top 1% for yield grade. From top to bottom, Kane will work in any scenario. This mating has produced power, length of body, loads of performance and super dispositions every time so we stayed with it. Take your pick between these three full brothers - you will not be disappointed!

**CALVING EASE: E**

**GE-EPDS**



# YEARLING BULLS



LOT  
4



LOT 4 • Pictured in November



ANCHOR B GOLD RUSH 48G  
Sire of Lot 5



LOT  
5

4

## TREF KING RANCH 471K

PUREBRED(100/86.5) BULL · HOMO POLLED (T) · RED  
3/19/2022 · TREF 471K · NPM2493682

GV AUSTIN 701A  
**TOMV DIESEL 619D**  
MISS TOM 118Y

GV X-MAN 701X  
GV MISS LODESTAR 701T  
WULFS WAGON TRAIN 3197W  
MISS TOM 7106T

COLE DAZZLE 74D  
**TREF FRANCINE 471F**  
TREF BLESSED 071B

COLE ARCHITECT 08A  
COLE MISS NASA 006X  
TREF ZEUS 232Z  
TREF ZAYNA 871Z

ACT BW  
90

ADJ WW  
849

	CE	BW	WW	YW	MK	TM	CM	SC	DC	YG	CW	RE	MB	\$MTI
EPDS	8	3	95	150	28	76	7	.46	14	-.5	47	1.37	-.38	49
%Rank	80	90	1	1	10	1	35	75	50	55	2	10	>95	50

Herd bull alert! TREF King Ranch is a homozygous purebred son of **GE-EPDS** TOMV Diesel out of a COLE Dazzle daughter. Study his phenotype and look over his numerical values. We think you'll agree this bull will go on to do great things in your herd. He's long, deep and sound, has great disposition, big scrotal, had the biggest weaning and yearling weight in the spring bulls, and carries an incredible EPD package. He ranks in the top 1% for weaning and yearling weight, top 2% for carcass, and the top 10% for milk and ribeye area. With his magnitude of positive traits, he will keep your program profitable. He closely resembles TREF Hardcore who topped our sale in 2021 at \$51,000.

**CALVING EASE: E**  
**F94L MYOSTATIN 2**  
**RETAINING 1/3 INTEREST**

5

## TREF KLONDIKE 175K

LIM-FLEX(75/68.7) BULL · HET POLLED (T) · RED  
2/21/2022 · TREF 175K · LFM2493658

B BAR AUSTIN HEALY 4D ET  
**ANCHOR B GOLD RUSH 48G**  
ANCHOR B BAILEY 21B

IVY'S BUBBA WATSON HTZ24B  
B BAR POLLED UNIQUE  
ANCHOR B "THE BOSS"  
ANCHOR B ZAHARA

VL YES MAN 111Y  
**TREF CUTIE PIE 175C**  
TREF 475

RUNL TRAVIS 332T  
VL TOLD YA SO

ACT BW  
105

ADJ WW  
699

	CE	BW	WW	YW	MK	TM	CM	SC	DC	YG	CW	RE	MB	\$MTI
EPDS	8	2.8	77	111	21	59	5	.8	16	-.54	34	1.28	-.41	43
%Rank	90	90	30	50	50	35	75	65	15	1	55	2	>95	>95

Grab yourself a Klondike! TREF Klondike is a polled, Purebred (register eligible only as a 75%) bullout of a VL Yes Man daughter, the same cow family as the full brothers in the beginning of the sale. His sire is Anchor B Gold Rush and he is the first of his sons to sell in the U.S. Klondike has a stylish look while maintaining a balance of muscle shape, sound feet and legs, and overall balance. He was just shy of recording a 700 lb. weaning weight. He brings relevant carcass traits to the table with a top 1% ranking for yield grade and top 2% for ribeye.

**CALVING EASE: E**  
**F94L MYOSTATIN 2**



# YEARLING BULLS



LOT  
6

6

## TREF KATMANDU 807K

PUREBRED(93/87.2) BULL · HOMO POLLED (T) · RED  
3/2/2022 · TREF 807K · NPM2493743

SYES EASY GOING 77E  
**TREF GUNPOWDER 290G**  
TREF DAKOTA LOVE 290D

COLE BUSINESSMAN 104B  
MISS SYES RANSOM 76X  
TREF ZEUS 232Z  
TREF ADDIE 912A

RICHMOND XANDER SRD 22X  
**TREF ZAYLIE 807Z**  
TREF WANDA 507W

RPY PAYNES MARATHON 47U  
RICHMOND TWIST SRD 22T  
TREF RIFLE 906R  
TREF SOPHISICATION 207S

**ACT BW**  
98

**ADJ WW**  
724

	CE	BW	WW	YW	MK	TM	CM	SC	DC	YG	CW	RE	MB	\$MTI
EPDS	8	1.8	66	95	25	58	5	.8	13	-.62	20	1.31	-.19	48
%Rank	80	65	55	60	20	35	70	25	60	15	75	15	65	60

TREF Katmandu is a homozygous polled purebred with depth of rib and flank and nice muscle expression that ties down into his lower quarter with a strong top. His sire, TREF Gunpowder, was a high seller to Vaughn Limousin as well as his maternal brother, TREF Engineer, and his dam has produced more sale bulls in the top sale pen than any cow in our herd. Katmandu will add milk and valuable carcass traits to your next calf crop. He posted a 724 lb. weaning weight. Be sure you are on the right side of the last bid.

**CALVING EASE: E**  
**F94L MYOSTATIN 2**



**TREF GUNPOWDER 290G** • Sire of Lot 6



**TREF ZAYLIE 807Z** • Dam of Lot 6



# YEARLING BULLS



LOT  
7

7

## TREF KANSAS 1607K ET

PUREBRED(100/87.7) BULL · HOMO POLLED (P-3) · HOMO BLACK (T)  
2/17/2022 · TREF 1607K · NPM2521095

LFLC DENVER 857D  
**WULFS HANDIWORK T027H**  
TECS DELUX 1644D

WULF'S ZIPLOCK N922Z  
LFLC ANNABELLE 857A  
WULFS AMAZING BULL T341A  
TECS AIRYANNA 1393

RUNL STETSON 850S  
**TREF BASIL 012B**  
TREF YELLOW JELLO 712Y

JCL LODESTAR 27L  
RUNL 72L  
LVLS TOP CRITERIA 8862P  
TREF WISHBONE 512W

**ACT BW**  
88

**ADJ WW**  
771

	CE	BW	WW	YW	MK	TM	CM	SC	DC	YG	CW	RE	MB	\$MTI
EPDS	9	1	72	104	22	58	7	.9	15	-.61	30	1.29	-.4	42
%Rank	70	50	35	40	45	35	35	20	30	15	40	20	>95	90

**GE-EPDs**

TREF Kansas is a double homozygous purebred from the Wulfs Handiwork sire and out of a RUNL Stetson daughter. Pounds, pounds, pounds here! He weaned off at 771 lbs. He is balanced numerically and rugged in his look. There hasn't been a black bull that has caused as much excitement around here, ever! The best way to truly appreciate this bull is from the rear and the top. Add this valuable genetic bull to your herd. He is a full brother to Lot 8.

**CALVING EASE: EE**  
**F94L MYOSTATIN 2**  
**RETAINING 1/3 INTEREST**



**WULFS HANDIWORK T027H**  
Sire of Lots 7 & 8



LOT 7 • Pictured with recip dam



LOT 7 • Pictured as one-month-old



# YEARLING BULLS



LOT 8 • Pictured with recip dam



**TREF COAL TRAIN 707C**  
Maternal brother of Lot 9



**TREF DONE RIGHT 707D**  
Maternal brother of Lot 9



8

## TREF KENTUCKY 1605K ET

PUREBRED(100/87.7) BULL · HOMO POLLED (P-3) · HET BLACK (T)  
2/27/2022 · TREF1605K · NPM2521096

LFLC DENVER 857D  
**WULFS HANDIWORK T027H**  
TECS DELUX 1644D

WULFS ZIPLOCK N922Z  
LFLC ANNABELLE 857A  
WULFS AMAZING BULL T341A  
TECS AIRYANNA 1393

RUNL STETSON 850S  
**TREF BASIL 012B**  
TREF YELLOW JELLO 712Y

JCL LODESTAR 27L  
RUNL 72L  
LVLS TOP CRITERIA 8862P  
TREF WISHBONE 512W

**ACT BW**  
98

**ADJ WW**  
716

	CE	BW	WW	YW	MK	TM	CM	SC	DC	YG	CW	RE	MB	\$MTI
EPDS	10	1.4	71	104	22	58	7	.9	15	-.63	33	1.29	-.29	46
%Rank	60	60	35	40	45	35	35	20	30	15	30	20	90	75

TREF Kentucky is a long-bodied, homozygous polled purebred. He is sired by Wulfs Handiwork and from an RUNL Stetson daughter, making him a full brother to Lot 7. The only thing making them different is he is heterozygous black, which may make him even better in some eyes. Truly a proven pedigree that has worked well. His numbers align nicely and he will make a great addition to your herd.

**CALVING EASE: E**  
**F94L MYOSTATIN 2**

9

## TREF KONGO 707K

PUREBRED(93/87.9) BULL · HOMO POLLED (T) · BLACK  
3/20/2022 · TREF 707K · NPM2493720

GV AUSTIN 701A  
**TOMV DIESEL 619D**  
MISS TOM 118Y

CV X-MAN 701X  
CV MISS LODESTAR 701T  
WULFS WAGON TRAIN 3197W  
MISS TOM 7106T

SYES USER FRIENDLY 524U  
**TREF YESTERDAY 707Y**  
TREF WANDA 507W

WULFS RANSOM 3059R  
MISS SYES JUSTICE 224S  
TREF RIFLE 906R  
TREF SOPHISICATION 207S

**ACT BW**  
90

**ADJ WW**  
680

	CE	BW	WW	YW	MK	TM	CM	SC	DC	YG	CW	RE	MB	\$MTI
EPDS	8	2.3	70	107	28	63	4	.45	18	-.54	30	1.29	-.28	45
%Rank	80	75	40	30	10	15	85	75	3	40	40	20	90	75

TREF Kongo offers lots of muscle expression and depth of rib. This homozygous polled purebred is pleasing to the eye with balanced numbers. Cattle that work never go out of style and this time-tested formula of Diesel x User Friendly will give you the confidence you need to bid early and often. His dam creates herd bulls every time. The oldest cow in the herd, yet ultrasounded and bred early again to our new herd sire, Balamore Hershey. Kongo is a maternal brother to Done Right, Coal Train and several others. Maternal, fertility, and predictability here!

**CALVING EASE: EE**



# YEARLING BULLS



LOT  
**10**

**10**

## TREF KRYPTONITE 516K

PUREBRED(93/91.8) BULL · HET POLLED (T) · RED  
3/22/2022 · TREF 516K · NPM2493687

GV X-MAN 343E  
**GV GRID IRON 862G**  
GV MS AMHERST 5517C

GV X-MAN 446Z  
GV MISS GENERAL 864U  
HUNT AMHERST 71A  
GV MISS TUFF ENUFF 9910W

TOMV DIESEL 619D  
**TREF GOLDEN GLIMMER 516G**  
TREF BLOOM 039B

GV AUSTIN 701A  
MISS TOM 118Y  
CF JIM DANDIE 216U  
TREF PICTURESQUE 031P

**ACT BW**  
86

**ADJ WW**  
801

	CE	BW	WW	YW	MK	TM	CM	SC	DC	YG	CW	RE	MB	\$MTI
EPDS	12	2	88	125	30	73	10	.38	13	-.59	37	1.4	-.24	52
%Rank	40	70	2	4	4	1	5	85	60	20	15	10	80	35

TREF Kryptonite will add explosive growth and carcass! This polled purebred ranks in the top 2% for weaning weight, top 4% for yearling weight, top 10% for ribeye area, top 15% for carcass and top 20% for yield grade. His dam did a tremendous job at her first outin and his granddam is a daughter of Jim Dandie. Kryptonite is the first bull to sell by our calving ease bull, GV Grid Iron. Every visitor finds this bull instantly. He is bred for performance! You won't find a wider or quieter bull anywhere, and he is calving ease!

**CALVING EASE: EE**  
**F94L MYOSTATIN 2**  
**RETAINING 1/3 INTEREST**



**TREF BLOOM 039B**  
Maternal grandam of Lot 10



**LOT 10** • Pictured in June



**LOT 10**



# YEARLING BULLS



TREF Hardcore 204H • Sire of Lot 11



LOT 11 • Pictured in November



## 11

### TREF KNOCKOUT 544K

PUREBRED(100/88.9) BULL · HOMO POLLED (T) · RED  
3/3/2022 · TREF 544K · NPM2493695

TOMV DIESEL 619D  
**TREF Hardcore 204H**  
TREF DELANEY 204D

WULFS CAPER 3303C  
**TREF GIANNA 544C**  
TREF YOGURT 765Y

CV AUSTIN 701A  
MISS TOM 118Y  
JYF YIELDMASTER 80Y  
TREF TREASURE 304T

KORC WULFS SNOW PRINCE  
WULFS ARMADA 3303A  
DVCL MR UNBELIEVABLE U03  
TREF 565J

**ACT BW**

78

**ADJ WW**

740

	CE	BW	WW	YW	MK	TM	CM	SC	DC	YG	CW	RE	MB	\$MTI
EPDS	8	2.6	73	111	27	64	6	.42	14	-6	34	1.33	-31	46
%Rank	80	80	30	20	15	10	55	75	50	20	25	15	95	75

TREF Knockout does many things right and sells as the first TREF Hardcore son. Lot 11 was born a twin. He is a homozygous polled purebred out of a first calf Wulfs Caper daughter. He has top 20% rankings for yearling weight and yield grade with top 15% for milk and ribeye area. He is thick made but moves out freely, is clean in his lines and design and has excellent disposition like his siblings.

**CALVING EASE: E E**

**F94L MYOSTATIN 2**

## 12

### TREF KICKSTART 918K

PUREBRED(96/89.3) BULL · HOMO POLLED (P-1) · RED  
2/25/2022 · TREF 918K · NPM2493730

TREF COAL TRAIN 707C  
**TREF GRAND SLAM 111G**  
TREF CHANEL 111C

RICHMOND XANDER SRD 22X  
**TREF ADELLE 918A**  
TREF WINDSWEEP 511W

RPY PAYNES DERBY 46Z  
TREF YESTERDAY 70Y  
JYF YIELDMASTER 80Y  
TREF WINDSWEEP 511W

RPY PAYNES MARATHON 47U  
RICHMOND TWIST SRD 22T  
ROMN TOW TRUCK 111T  
TREF SCARLET 310G

**ACT BW**

93

**ADJ WW**

719

	CE	BW	WW	YW	MK	TM	CM	SC	DC	YG	CW	RE	MB	\$MTI
EPDS	8	2.7	68	104	28	62	5	.35	6	-.58	32	1.32	-2	48
%Rank	80	85	50	40	10	15	70	85	95	25	35	15	70	60

Ready to Kickstart the new year with power? If so, here is the bull for you! TREF Kickstart is a homozygous polled purebred with lots of muscle, lots of middle and a wide top. He is sired by TREF Grand Slam and out of a Richmond Xander daughter. He has been a standout since birth. You can't go wrong here.

**CALVING EASE: E**



# 18-MONTH-OLD BULLS

## 18-MONTH-OLD BULLS • LOTS 13 – 18

We have a powerful set of 18-month-old bulls that are ready to be turned out and get to work this spring. They offer a balanced set of traits, are chock-full of muscle and bred to pack on the pounds in your calf crop come weaning time. Study them visually and numerically, and we know you'll find one to fit your needs.



TREF DAKOTA DIXIE 283D • Dam of Lot 13



TREF BLOOM 059B • Dam of Lot 14



### 13

#### TREF JAW DROPPING 283J

PUREBRED(94/88.9) BULL · HOMO POLLED (P-1) · BLACK  
8/19/2021 · TREF 283J · NPM2451052

B BAR AUSTIN HEALY 4D ET  
**ANCHOR B GOLD RUSH 48C**  
ANCHOR B BAILEY 21B

IVY'S BUBBA WATSON HTZ24B  
B BAR POLLED UNIQUE  
ANCHOR B "THE BOSS"  
ANCHOR B ZAHARA

TREF ZEUS 232Z  
**TREF DAKOTA DIXIE 283D**  
TREF TINY GIRL 384T

ROMN TOW TRUCK 111T  
TREF RED WINE 232R  
TREF RIFLE 906R  
TREF ROXIE 108R

**ACT BW**  
95

**ADJ WW**  
975

	CE	BW	WW	YW	MK	TM	CM	SC	DC	YG	CW	RE	MB	\$MTI
EPDS	7	4.3	96	139	28	75	5	1.1	18	-.66	51	1.73	-.41	49
%Rank	90	>95	1	1	10	1	70	10	3	10	1	1	>95	50

This guy has been getting a lot of attention around here since he dried off on day 1. He never let up on the gas and now holds the weaning weight record here at the ranch. Jaw Dropping is in the top 1% for weaning weight, yearling weight, carcass weight and ribeye area in addition to his whopping adjusted weaning weight of 975 lbs! We think this bull is appropriately named—TREF Jaw Dropping! You also get a nice balance of milking ability, docility and yield grade. This bull is the real deal. He's a homozygous polled son of Anchor B Gold Rush and out of a TREF Zeus daughter. As you can see by his picture, he has the parts and pieces to be a solid producer. Because pounds matter, Jaw Dropping needs to be on your short list!

**CALVING EASE: E**

### 14

#### TREF JOCK 039J

PUREBRED(87/94) BULL · HOMO POLLED (T) · RED  
8/9/2021 · TREF 039J · NPM2451045

B BAR AUSTIN HEALY 4D ET  
**ANCHOR B GOLD RUSH 48C**  
ANCHOR B BAILEY 21B

IVY'S BUBBA WATSON HTZ24B  
B BAR POLLED UNIQUE  
ANCHOR B "THE BOSS"  
ANCHOR B ZAHARA

CF JIM DANDIE 216U  
**TREF BLOOM 039B**  
TREF PICTURESQUE 031P

EAFF POLLED HUMMER 530P  
CF POLLED DANDIE 040P  
ROMN JUSTICE

**ACT BW**  
85

**ADJ WW**  
879

	CE	BW	WW	YW	MK	TM	CM	SC	DC	YG	CW	RE	MB	\$MTI
EPDS	9	2.4	81	113	32	73	7	.8	15	-.69	37	1.61	-.45	44
%Rank	70	80	10	15	2	1	35	25	30	2	15	1	>95	85

TREF Jock offers a ton of muscle and rib shape. This homo polled purebred has breed-leading growth with a top 10% for weaning weight, top 15% for yearling weight and carcass weight to complement his top 2% for milk and yield grade and a top 1% for ribeye. He posted a huge weaning weight and is still growing. His dam is truly an incredible matron in looks and productivity. Her six progeny have an average weaning index of 112 in a strong group of contemporaries. Of those six, the four bulls' average weaning weight was 841 lbs. Her milk EPD grows every year and is now at 36 on a perfect udder. Prepare to haul fewer calves in a trailer if this guy is the sire. This bull puts it all together in one nice package.

**CALVING EASE: E**



# 18-MONTH-OLD BULLS



LOT  
15



TREF CUPCAKE 125C • Dam of Lot 15



ANCHOR B GOLD RUSH 48G  
Sire of Lots 13,14 & 15



LOT  
16

15

## TREF JESTER 125J

PUREBRED(100/90.2) BULL · HOMO POLLED (P-1) · RED  
8/9/2021 · TREF125J · NPM2451047

B BAR AUSTIN HEALY 4D ET  
ANCHOR B GOLD RUSH 48G  
ANCHOR B BAILEY 21B

IVY'S BUBBA WATSON HTZ24B  
B BAR POLLED UNIQUE  
ANCHOR B "THE BOSS"  
ANCHOR B ZAHARA

WULFS AMAZING BULL T341A  
TREF CUPCAKE 125C  
TREF YELLOW FLOWER 725Y

HUNT MR JOCK 44J  
WULFS ULTRA DIAMOND 8571U  
ROMN TOW TRUCK 111T  
TREF 425 U

ACT BW  
95

ADJ WW  
888

	CE	BW	WW	YW	MK	TM	CM	SC	DC	YG	CW	RE	MB	\$MTI
EPDS	8	2.6	83	118	30	71	5	1.25	19	-0.71	34	1.64	-0.51	42
%Rank	80	80	4	10	4	2	70	4	2	1	25	1	>95	90

If you're in the cattle business and looking for a bull to make a great set of cows, check out the pedigree and EPDs of this bull. He was created on purpose for those very reasons. TREF Jester pairs an impressive EPD profile with top 1% for yield grade and ribeye, top 2% for docility, top 4% for scrotal, milk ability and weaning weight, and top 10% for yearling weight. He is a long bodied, smooth shouldered, eye-appealing purebred son of Anchor B Gold Rush out of a Wulfs Amazing Bull daughter. Note, he is homozygous polled.

CALVING EASE: E

16

## TREF JAKE 564J

PUREBRED(100/91.9) BULL · DOUBLE POLLED · RED  
9/25/2021 · TREF 564J · NPM2451057

KORC WULFS SNOW PRINCE  
WULFS CAPER 3303C  
WULFS ARMADA 3303A

RUNL STETSON 850S  
VL SNOW PRINCESS  
WULFS WALCOTT F711W  
WULFS SOLOIST 6284S

JBAK MONTANA 680M  
TREF WIND CHIME 564W  
TREF 565J

DEVONS THE REAL DEAL  
JBAK ORNAMENT 640G  
WULFS DAMON 0332D  
TREF DELTA DAWN 006D

ACT BW  
90

ADJ WW  
901

	CE	BW	WW	YW	MK	TM	CM	SC	DC	YG	CW	RE	MB	\$MTI
EPDS	7	2.4	64	85	23	55	2	.9	10	-0.63	24	1.26	-0.31	43
%Rank	90	80	65	80	35	50	>95	20	80	15	60	25	95	90

TREF Jake the last of the Wulfs Capers. His dam has 12 consecutive calves and is holding strong as a 14-year-old. Jake is double polled, purebred and tipped the scale at weaning with a 900+ lb. weaning weight! He is smooth in his shoulder design, has the extra muscle expression on the back side with depth of rib. He also offers up a balanced EPD profile!

CALVING EASE: E



# 18-MONTH-OLD BULLS



LOT  
17



TREF YAKIRA 766Y • Dam of Lot 17



ANCHOR B GOLD RUSH 48G

Sire of Lots 17 & 18



LOT  
18

17

## TREF JENNINGS 110J ET

PUREBRED(100/91.3) BULL · HOMO POLLED (P-1) · RED  
8/17/2021 · TREF110J · NPM2460191

B BAR AUSTIN HEALY 4D ET  
**ANCHOR B GOLD RUSH 48G**  
ANCHOR B BAILEY 21B

ROMN TOW TRUCK 111T  
**TREF YAKIRA 766Y**  
TREF SASHA 266S

IVY'S BUBBA WATSON HTZ24B  
B BAR POLLED UNIQUE  
ANCHOR B "THE BOSS"  
ANCHOR B ZAHARA

WULFS RANSOM 3059R  
ROMN RITA 28R  
JBAK MONTANA 680M  
TREF 466H

ACT BW  
90

ADJ WW  
872

	CE	BW	WW	YW	MK	TM	CM	SC	DC	YG	CW	RE	MB	\$MTI
EPDS	4	4.4	82	122	30	71	2	1.15	15	-.69	37	1.65	-.52	42
%Rank	>95	>95	5	10	4	2	>95	10	30	2	15	1	>95	95

Another Anchor B Gold Rush son here! TREF Jennings is a homozygous polled purebred with a great set of numbers. His dam is our great TREF Yakira donor. He ranks in the top 1% for ribeye area, top 2% for yield grade, top 4% for milk, top 5% for weaning weight and top 10% for yearling weight. He has plenty of eye appeal to go with his clean lines and his explosive growth and muscle will impress you.

CALVING EASE: E

18

## TREF JETER 871J

PUREBRED(100/89.1) BULL · HOMO POLLED (P-1) · RED  
8/14/2021 · TREF 871J · NPM2451059

B BAR AUSTIN HEALY 4D ET  
**ANCHOR B GOLD RUSH 48G**  
ANCHOR B BAILEY 21B

JBV LOMBARDI 911W  
**TREF ZAYNA 871Z**  
TREF RUTH 170R

IVY'S BUBBA WATSON HTZ24B  
B BAR POLLED UNIQUE  
ANCHOR B "THE BOSS"  
ANCHOR B ZAHARA

OKLF LINEBACKER 341L  
JBV TARA 718T  
WZRK GENESIS 532E  
TREF 770L

ACT BW  
85

ADJ WW  
814

	CE	BW	WW	YW	MK	TM	CM	SC	DC	YG	CW	RE	MB	\$MTI
EPDS	8	2.4	77	110	27	66	6	.75	15	-.69	34	1.58	-.4	44
%Rank	80	80	15	25	15	10	55	35	30	2	25	1	>95	80

If you have noticed, the Anchor B Gold Rush sons have a lot eye appeal to them with strong EPD profiles and TREF Jeter is no different. This homozygous polled purebred is from a JBV Lombardi daughter. His numerical profile is nicely balanced and breed leading. Note his impressive 814 lb. adjusted weaning weight from an actual 85 lb. birth weight.

CALVING EASE: E



# 2-YEAR-OLD BULL



LOT  
19

19

## TREF JUDAH 292J

PUREBRED(100/88.7) BULL · HOMO POLLED (P-2) · DOUBLE BLACK  
3/29/2021 · TREF 292J · NPM2333643

RPY PAYNES DERBY 46Z  
**TREF DONE RIGHT 707D**  
TREF YESTERDAY 707Y

TREF ZEUS 232Z  
**TREF DAKOTA GIRL 292D**  
TREF ALLELUIA 900A

KAJO RESPONDER 120R  
IVY'S POLLED PRINCESS 1P  
SYES USER FRIENDLY 524U  
TREF WANDA 507W

ROMN TOW TRUCK 111T  
TREF RED WINE 232R  
TOMV YELLOWSTONE 153Y  
TREF WONDERFUL 500W

**ACT BW**  
78

**ADJ WW**  
593

**ADJ YW**  
1020

	CE	BW	WW	YW	MK	TM	CM	SC	DC	YG	CW	RE	MB	\$MTI
EPDS	7	3.4	70	108	25	60	3	.82	10	-.55	35	1.26	-.26	46
%Rank	90	90	40	30	20	25	95	25	80	35	25	25	85	70

TREF Judah is a homozygous polled, double black purebred. He is the last TREF Done Right bull to come out of our program. He is long bodied, bold and flashy with a ton of muscle and class. As a twin, he posted a moderate birth weight of 78 lbs. His EPDs stack up nicely.

**CALVING EASE: E**



**TREF DONE RIGHT 707D** • Sire of Lot 19



**TREF DAKOTA GIRL 292D** • Dam of Lot 19



# 18-MONTH-OLD BULLS



LOT  
20



TREF GUNPOWDER 290G • Sire of Lots 20,21 & 22

20

## TREF JOCKEY 491J

PUREBRED(93/90.1) BULL · HOMO POLLED (P-1) · BLACK  
9/5/2021 · TREF 491J · NPM2451056

SYES EASY GOING 77E  
**TREF GUNPOWDER 290G**  
TREF DAKOTA LOVE 290D

COLE BUSINESSMAN 104B  
MISS SYES RANSOM 76X  
TREF ZEUS 232Z  
TREF ADDIE 912A

JYF YIELDMASTER 80Y  
**TREF FLICKER 491F**  
TREF ALWAYS SWEET 991A

TMF SYMBOL 188S  
AIRLIE TARA  
RICHMOND XANDER SRD 22X  
TREF TEAPOT 316T

ACT BW  
95

ADJ WW  
761

	CE	BW	WW	YW	MK	TM	CM	SC	DC	YG	CW	RE	MB	\$MTI
EPDS	8	.9	57	84	22	50	4	.34	13	-.57	15	1.13	-.21	44
%Rank	80	50	85	80	45	80	85	85	60	30	90	50	70	80

TREF Jockey is a homozygous polled purebred sired by TREF Gunpowder and out of a JYF Yieldmaster daughter. We listen to our customers and apply their preferences to our breeding plans. Jockey has the extra depth of rib, muscle expression and soundness you demand. If you can't make it to the sale to see this bull, moderate and powerful best describe him. A ton of muscle on a small frame that will downsize big cows, designed to be a powerful breeding piece.

**CALVING EASE: E**



TREF FLICKER 491F • Dam of Lot 20



# 18-MONTH-OLD BULLS



LOT  
21



LOT  
22

21

## TREF JAX 205J

PUREBRED(87/85.2) BULL · HOMO POLLED (P-1) · HET BLACK (T)  
8/20/2021 · TREF 205J · NPM2451050

SYES EASY GOING 77E  
**TREF GUNPOWDER 290G**  
TREF DAKOTA LOVE 290D

COLE BUSINESSMAN 104B  
MISS SYES RANSOM 76X  
TREF ZEUS 232Z  
TREF ADDIE 912A

VL YES MAN 111Y  
**TREF DARK CHOCOLATE 205D**  
TREF SOPHISICATION 207S

RUNL TRAVIS 332T  
VL TOLD YA SO  
JBAK MONTANA 680M

**ACT BW**  
87

**ADJ WW**  
741

	CE	BW	WW	YW	MK	TM	CM	SC	DC	YG	CW	RE	MB	\$MTI
EPDS	9	1.4	56	84	21	49	6	.65	15	-.53	11	1.02	-.28	41
%Rank	70	60	85	80	55	85	55	45	30	45	95	70	90	95

Well, TREF Jax really didn't want his picture taken, but we know you can see all the good he offers. This homozygous polled, double black purebred is sired by TREF Gunpowder. Produced by our most productive cow family, he is the natural calf of our donor TREF Dark Chocolate, who is also the dam of Lots 27, 28 and 29. He is deep flanked with added muscle design and rib shape. He'll work in a variety of scenarios with his moderate birth weight EPD and added milk.

**CALVING EASE: EE**

22

## TREF JETT 126J

PUREBRED(100/88.8) BULL · HOMO POLLED (P-1) · BLACK  
9/2/2021 · TREF 126J · NPM2451048

SYES EASY GOING 77E  
**TREF GUNPOWDER 290G**  
TREF DAKOTA LOVE 290D

COLE BUSINESSMAN 104B  
MISS SYES RANSOM 76X  
TREF ZEUS 232Z  
TREF ADDIE 912A

TREF ZEUS 232Z  
**TREF CLOVER 126C**  
TREF 425 U

ROMN TOW TRUCK 111T  
TREF RED WINE 232R  
RPL PLATINUM 936P  
TREF NANCY 982N

**ACT BW**  
93

**ADJ WW**  
731

	CE	BW	WW	YW	MK	TM	CM	SC	DC	YG	CW	RE	MB	\$MTI
EPDS	10	.6	53	78	21	48	6	.78	15	-.62	15	1.14	-.29	41
%Rank	60	40	90	90	55	90	55	35	30	15	90	50	90	95

We really like how TREF Gunpowder has worked on our cows. TREF Jett is a homozygous polled purebred with great disposition from a TREF Zeus daughter. He is long bodied, moderately frame and heavily muscled. Jett would fit nicely into your program, especially if you want a bit more calving ease.

**CALVING EASE: E**



# 18-MONTH-OLD BULLS



LOT 23 • Pictured as calf



TREF BRIELLE 064B • Dam of Lot 24



## 23

### TREF JURY DUTY 256J

PUREBRED(100/88.1) BULL · HET POLLED (T) · RED  
8/7/2021 · TREF 256J · NPM2451051

SYES EASY GOING 77E  
**TREF GUNPOWDER 290G**  
TREF DAKOTA LOVE 290D

JYF YIELDMASTER 80Y  
**TREF DAKOTA ROSE 256D**  
TREF X-QUISITE 634X

COLE BUSINESSMAN 104B  
MISS SYES RANSOM 76X  
TREF ZEUS 232Z  
TREF ADDIE 912A

TMF SYMBOL 188S  
AIRLIE TARA  
ROMN TOW TRUCK 111T  
TREF 334G

**ACT BW**  
87

**ADJ WW**  
755

	CE	BW	WW	YW	MK	TM	CM	SC	DC	YG	CW	RE	MB	\$MTI
EPDS	10	-1.1	44	64	22	44	5	.45	16	-.62	13	1.18	-.31	37
%Rank	60	15	>95	>95	45	95	70	75	15	15	95	40	95	>95

TREF Jury Duty will give your cowherd the right verdict. This polled, red purebred is sired by TREF Gunpowder out of a JYF Yieldmaster daughter. Here is an awesome breed-leading calving-ease bull with docility and yield grade. He is stylish, moderate and thick made, the vote will be unanimous to add him to your herd.

**CALVING EASE: EE**  
**F94L MYOSTATIN 2**

**GE-EPDs**

## 24

### TREF JUPITER 064J

PUREBRED(100/90.2) BULL · HOMO POLLED (T) · RED  
9/6/2021 · TREF 064J · NPM2451046

SYES EASY GOING 77E  
**TREF GUNPOWDER 290G**  
TREF DAKOTA LOVE 290D

RICHMOND XANDER SRD 22X  
**TREF BRIELLE 064B**  
TREF UNTOLD 465U

COLE BUSINESSMAN 104B  
MISS SYES RANSOM 76X  
TREF ZEUS 232Z  
TREF ADDIE 912A

RPY PAYNES MARATHON 47U  
RICHMOND TWIST SRD 22T  
JBAK MONTANA 680M  
TREF PETITE 065P

**ACT BW**  
85

**ADJ WW**  
787

	CE	BW	WW	YW	MK	TM	CM	SC	DC	YG	CW	RE	MB	\$MTI
EPDS	9	1.6	63	90	23	55	4	.55	10	-.58	31	1.38	-.21	46
%Rank	70	60	65	70	35	50	85	65	80	25	35	10	70	70

Whoa. Check out this dude. Out-of-this-world eye appeal, thickness and depth of rib. TREF Jupiter is a homozygous polled purebred son of TREF Gunpowder out of a Richmond Xander daughter, an ideal and traditional looking Limousin cow. Moderate for birth, with milk and carcass traits, let Jupiter orbit your pastures.

**CALVING EASE: EE**  
**F94L MYOSTATIN 2**

**GE-EPDs**



# 2-YEAR-OLD BULLS

## 2-YEAR-OLD BULLS • LOTS 25 – 26

There are very few two year old purebred Limousin bulls in the country. Here's your opportunity to get one and cover twice as many cows as a yearling.



TREF COMMANDER 766C • Sire of Lot 25



TREF YELLOW JELLO 712Y • Dam of Lot 25



### 25

#### TREF THE JUDGE 712J

PUREBRED(100/87.8) BULL · HOMO POLLED (T) · RED  
2/19/2021 · TREF 712J · NPM2333531

TREF ZENITH 570Z  
**TREF COMMANDER 766C**  
TREF YAKIRA 766Y

WULFS XTRACTOR X233X  
TREF WILD FLOWER 570W  
ROMN TOW TRUCK 111T  
TREF SASHA 266S

**ACT BW**  
95

LVLS TOP CRITERIA 8862P  
**TREF YELLOW JELLO 712Y**  
TREF WISHBONE 512W

COLE WULF HUNT  
LVLS8862M  
ROMN TOW TRUCK 111T  
TREF TONI 311T

**ADJ WW**  
761

**ADJ YW**  
1228

	CE	BW	WW	YW	MK	TM	CM	SC	DC	YG	CW	RE	MB	\$MTI
EPDS	8	2.3	70	106	20	55	3	.7	11	-59	26	1.18	-34	44
%Rank	80	75	40	35	65	50	95	35	75	20	55	40	>95	85

Solid is what best describes TREF The Judge! A big, stout 2-year-old that should have an outcross pedigree for most operations. This homozygous polled purebred is sired by our home raised performance giant, TREF Commander, and from an old cow that has raised 11 consecutive calves early in each season. Four of her sons made the bull sale and the rest made cows in our herd or others. He weighed in at 761 lbs. at weaning and 1,228 lbs. at yearling. This solid, soggy bull excels in muscle design. Make sure you are on the right side when the gavel falls for the last time.

**CALVING EASE: E**

### 26

#### TREF JUBILEE 066J

PUREBRED(100/91) BULL · HOMO POLLED (P-1) · RED  
3/28/2021 · TREF 066J · NPM2333690

GV AUSTIN 701A  
**TOMV DIESEL 619D**  
MISS TOM 118Y

CV X-MAN 701X  
CV MISS LODESTAR 701T  
WULFS WAGON TRAIN 3197W  
MISS TOM 7106T

**ACT BW**  
98

RICHMOND XANDER SRD 22X  
**TREF BUTTERFLY 066B**  
TREF PETITE 065P

RPY PAYNES MARATHON 47U  
RICHMOND TWIST SRD 22T  
ROMN JUSTICE  
TREF 565J

**ADJ WW**  
644

**ADJ YW**  
1180

	CE	BW	WW	YW	MK	TM	CM	SC	DC	YG	CW	RE	MB	\$MTI
EPDS	5	4.4	67	99	24	58	4	0	12	-58	33	1.27	-28	45
%Rank	>95	>95	50	50	30	35	85	95	70	25	30	20	90	80

TREF Jubilee is a homozygous polled purebred son of TOMV Diesel out of a consistent Richmond Xander daughter. This big, stout 2-year-old bull has the Limousin look the breed is famous for with added body length, eye appeal and nice muscle expression. The carcass data reads well too!

**CALVING EASE: E**



# 18-MONTH-OLD BULLS



27

## TREF JUNEAU 124J ET

PUREBRED(87/85.9) BULL · HOMO POLLED (P-3) · HOMO BLACK (T)  
8/7/2021 · TREF 124J · NPM2493224

COLE BUSINESSMAN 104B  
**SYES EASY GOING 77E**  
MISS SYES RANSOM 76X

RICHMOND YOGI SRD 7Y  
COLE MISS PUREPOWER 809U  
WULFS RANSOM 3059R  
MISS SYES JUSTICE 476U

VL YES MAN 111Y  
**TREF DARK CHOCOLATE 205D**  
TREF SOPHISICATION 207S

RUNL TRAVIS 332T  
VL TOLD YA SO  
JBAK MONTANA 680M

**ACT BW**  
90  
**ADJ WW**  
819

	CE	BW	WW	YW	MK	TM	CM	SC	DC	YG	CW	RE	MB	\$MTI
EPDS	12	.5	62	96	19	50	8	.7	16	-.56	28	1.22	-.42	38
%Rank	40	40	70	60	75	80	25	35	15	30	45	30	>95	>95

TREF Juneau is a double homozygous purebred son of SYES Easy Going out of a VL Yes Man daughter. While he has an excellent display of muscle, he also is moderate in his birth weight EPD. You will appreciate his clean front and smooth design. He lives up to his sire's name.

**CALVING EASE: E**



28

## TREF JAGUAR 52J ET

PUREBRED(87/85.9) BULL · HOMO POLLED (T) · DOUBLE BLACK  
8/6/2021 · TREF 52J · NPM2460023

COLE BUSINESSMAN 104B  
**SYES EASY GOING 77E**  
MISS SYES RANSOM 76X

RICHMOND YOGI SRD 7Y  
COLE MISS PUREPOWER 809U  
WULFS RANSOM 3059R  
MISS SYES JUSTICE 476U

VL YES MAN 111Y  
**TREF DARK CHOCOLATE 205D**  
TREF SOPHISICATION 207S

RUNL TRAVIS 332T  
VL TOLD YA SO  
JBAK MONTANA 680M

**ACT BW**  
88  
**ADJ WW**  
764

	CE	BW	WW	YW	MK	TM	CM	SC	DC	YG	CW	RE	MB	\$MTI
EPDS	12	.5	64	94	19	51	8	.7	16	-.51	17	1.09	-.35	41
%Rank	40	40	65	60	75	75	25	35	15	50	80	60	>95	95

TREF Jaguar is an attractively made, homozygous polled purebred. You'll admire him for his clean lines, wide top and muscle design. You will have a breeze calving with this Easy Going son. His dam in a VL Yes Man daughter that has done her part in creating a stout son. Lot 27 is a full ET brother and close contender in each competition area. They go back to the very prolific TREF Sophistication 207S cow — take your pick between the two.

**CALVING EASE: EE**

## Treftz Limousin— “Where Muscle Still Matters”

We understand most of our customers want to take as many pounds to the sale barn as possible. With that in mind, we make a concentrated effort to breed for pounds and performance. The key to producing those pounds is increased muscling. Our ultrasound results over the last seven years illustrate our selection pressure for muscling is paying dividends.

YEAR	REA
2012	15.5
2013	16.9
2014	16.4
2015	16.4
2016	16.2
2017	16.1
2018	16.5
2019	15.9
2020	16.1
2021	16.2
2022	16.4
<b>Average</b>	<b>16.2</b>



# 18-MONTH-OLD BULLS

## 29

### TREF JUST DO IT 155J ET

PUREBRED(96/89.2) BULL · DOUBLE POLLED · BLACK  
8/7/2021 · TREF 155J · NPM2522804

COLE BUSINESSMAN 104B  
**SYES EASY GOING 77E**  
MISS SYES RANSOM 76X

RICHMOND YOGI SRD 7Y  
COLE MISS PUREPOWER 809U  
WULFS RANSOM 3059R  
MISS SYES JUSTICE 476U

JYF YIELDMASTER 80Y  
**TREF CINDERELLA 110C**  
TREF ZIPPY 810Z

TMF SYMBOL 188S  
AIRLIE TARA  
ROMN TOW TRUCK 111T  
TREF SCARLET 310C

**ACT BW**  
89

**ADJ WW**  
598

	CE	BW	WW	YW	MK	TM	CM	SC	DC	YG	CW	RE	MB	\$MTI
EPDS	14	-1.1	58	86	17	46	8	.35	15	-.56	20	1.15	-.27	42
%Rank	25	15	80	75	90	95	25	85	30	30	75	45	90	90

Need a breed-leading calving-ease sire? TREF Just Do It will do that with his top 15% birth weight EPD of -1.1 and a double-digit calving-ease direct EPD. TREF Just Do It is a double polled, black purebred son of SYES Easy Going and from a JYF Yieldmaster son. Losing his recipient dam early on lowered his 205-day-weight compared to his herd mates but that is nothing to be scared of. Go on, just do it and sleep better at night.

**CALVING EASE: EE**



LOT  
29

## 30

### TREF JETSON 986J

PUREBRED(95/88) BULL · HET POLLED (T) · RED  
8/13/2021 · TREF 986J · NPM2451062

SYES EASY GOING 77E  
**TREF GUNPOWDER 290G**  
TREF DAKOTA LOVE 290D

COLE BUSINESSMAN 104B  
MISS SYES RANSOM 76X  
TREF ZEUS 232Z  
TREF ADDIE 912A

RICHMOND XANDER SRD 22X  
**TREF APRICOT 986A**  
TREF ROSE 186R

RPY PAYNES MARATHON 47U  
RICHMOND TWIST SRD 22T  
WULFS GUARDIAN 5074C  
TREF 886M

**ACT BW**  
95

**ADJ WW**  
810

	CE	BW	WW	YW	MK	TM	CM	SC	DC	YG	CW	RE	MB	\$MTI
EPDS	7	1.5	61	84	21	52	5	.5	14	-.67	13	1.24	-.47	37
%Rank	90	60	70	80	55	70	70	65	50	4	95	25	>95	>95

Meet Jetson. This polled purebred is sired by TREF Gunpowder out of a Richmond Xander daughter. He is as long as a freight train with the added muscle necessary to put dollars in your pocket come weaning time. He'll even give you the ever important carcass traits. Jetson is an older age bull with the kind of disposition you have to appreciate.

**CALVING EASE: E**

**F94L MYOSTATIN 2**



LOT  
30

## 31

### AR JIFFY GUS 1194J

FULLBLOOD(100/100) BULL · DOUBLE POLLED · RED  
8/23/2021 · ARSN 1194J · NFM2432079

STZZ POLLED YUKON 50E  
**STZZ POLLED GUTHRIE 826H**  
THUNDERATION

YKCC TOP LINE 180X  
MASH WHISPER  
ORION  
HI CTRY POLL WONDER

AR COLONEL 531C  
**AR GINA MAE 992C**  
AR BLISSFUL MISS MAE 476B

SVL POLLED LEADER 114A  
SVL POLLED EXCELANT 758X  
AR ZILLION 226Z  
AR POL MISSY 257M

**ACT BW**  
59

**ADJ WW**  
578

	CE	BW	WW	YW	MK	TM	CM	SC	DC	YG	CW	RE	MB	\$MTI
EPDS	11	.1	49	68	24	48	7	.03	6	-.64	28	1.24	-.15	44
%Rank	50	35	>95	95	30	90	35	95	95	10	45	25	55	80

Looking for a polled Fullblood bull? This is the only one in the offering and he's a darn good one. We bought his dam at the Thomas Farms Fullblood Dispersal with him at side. AR Jiffy Gus' pedigree is stacked with the who's who of the Fullblood business. Moderate birth weight with added carcass traits, extra muscle, eye appeal and a great attitude — Jiffy Gus is the bull for you!

**CALVING EASE: EE**



LOT  
31



# YEARLING BULLS



TREF ZEUS 232Z • Sire of Lot 33



TREF ALEXANDRIA 984A  
Dam of Lot 33



## 32

### TREF KUDOS 658K

PUREBRED(100/90.2) BULL · HOMO POLLED (T) · RED  
3/17/2022 · TREF 658K · NPM2493716

GV X-MAN 343E  
**GV GRID IRON 862Z**  
GV MS AMHERST 5517C

CV X-MAN 446Z  
CV MISS GENERAL 864U  
HUNT AMHERST 71A  
CV MISS TUFF ENUFF 9910W

TOMV DIESEL 619D  
**TREF HAYDEN 658H**  
TREF CHARLOTTE 192C

CV AUSTIN 701A  
MISS TOM 118Y  
RPY PAYNES DERBY 46Z  
TREF ZAZU 892Z

**ACT BW**  
80

**ADJ WW**  
718

	CE	BW	WW	YW	MK	TM	CM	SC	DC	YG	CW	RE	MB	\$MTI
EPDS	14	.2	74	108	24	62	9	.45	14	-.56	32	1.25	-.24	48
%Rank	25	35	25	30	30	15	15	75	50	30	35	25	80	60

This is the start of the red heifer calving-ease bulls and here's a good-looking rascal to do so. Not only is TREF Kudos 658K homozygous polled and purebred but he is wide with great muscle expression, deep sided, as long as a train and dog head gentle. Plus, his numerical package is balanced as well. His 2-year-old dam did a wonderful job setting him up to be profitable in your herd.

**CALVING EASE: EE**  
**RETAINING 1/3 INTEREST**

## 33

### TREF KICKOFF 1608K ET

PUREBRED(96/88) BULL · HET POLLED (T) · RED  
2/23/2022 · TREF 1608K · NPM2521079

ROMN TOW TRUCK 111T  
**TREF ZEUS 232Z**  
TREF RED WINE 232R

WULFS RANSOM 3059R  
ROMN RITA 28R  
JBAK MONTANA 680M  
TREF PRECIOUS 302G

TOMV YELLOWSTONE 153Y  
**TREF ALEXANDRIA 984A**  
TREF TINY GIRL 384T

SYES USER FRIENDLY 524U  
MISS TOM 407P  
TREF RIFLE 906R  
TREF ROXIE 108R

**ACT BW**  
71

**ADJ WW**  
616

	CE	BW	WW	YW	MK	TM	CM	SC	DC	YG	CW	RE	MB	\$MTI
EPDS	13	-1.3	64	96	28	59	8	.9	13	-.55	24	1.09	-.09	50
%Rank	30	15	65	60	10	30	25	20	60	35	60	60	35	45

I'm sure you've seen a pattern in our bulls. We like our bulls to be functional in their design and in their pedigrees. TREF Kickoff is a perfect representation of that. He's a polled purebred that should be great for heifers given his length of body, testicle and great temperament. He is from our herd sire TREF Zeus and out of a TOMV Yellowstone daughter. His full sister sells as Lot 67A.

**CALVING EASE: EEE**  
**F94L MYOSTATIN 2**



# YEARLING BULLS



LOT  
34



TREF BABY DOLL 034B • Dam of Lot 35



LOT  
35

34

## TREF KRAZY HORSE 530K

PUREBRED(100/90) BULL · HOMO POLLED (T) · RED  
3/21/2022 · TREF 530K · NPM2493692

GV X-MAN 343E  
**GV GRID IRON 862G**  
GV MS AMHERST 5517C

TOMV DIESEL 619D  
**TREF GOLDEN GLOW 530G**  
TREF CHARDONEY 168C

CV X-MAN 446Z  
CV MISS GENERAL 864U  
HUNT AMHERST 71A  
CV MISS TUFF ENUFF 9910W

CV AUSTIN 701A  
MISS TOM 118Y  
ROMN ZINGRAY 125Z  
TREF YOGURT 765Y

**ACT BW**  
84

**ADJ WW**  
705

	CE	BW	WW	YW	MK	TM	CM	SC	DC	YG	CW	RE	MB	\$MTI
EPDS	13	.9	75	107	27	65	10	.59	14	-6	33	1.36	-26	48
%Rank	30	50	25	30	15	10	5	65	50	20	30	10	85	60

TREF Krazy Horse is a homozygous polled purebred son of GV Grid Iron out of a heavy milking TOMV Diesel daughter. Moderate in his birth weight, and he has added growth, milk and carcass traits. Our goal is to raise cattle that are born alive, grow quickly, and pass quality traits on to the next generation. Krazy Horse will do that. Don't miss this potential heifer bull prospect.

**CALVING EASE: EE**

35

## TREF KASIUS 034K

PUREBRED(100/91) BULL · HOMO POLLED (P-2) · RED  
3/16/2022 · TREF 034K · NPM2493645

TREF COAL TRAIN 707C  
**TREF GRAND SLAM 111G**  
TREF CHANEL 111C

CF JIM DANDIE 216U  
**TREF BABY DOLL 034B**  
TREF WHISPER 534W

RPY PAYNES DERBY 46Z  
TREF YESTERDAY 707Y  
JYF YIELDMASTER 80Y  
TREF WINDSWEPT 511W

EAFF POLLED HUMMER 530P  
CF POLLED DANDIE 040P  
WULFS RANSOM 3059R  
TREF 734L

**ACT BW**  
80

**ADJ WW**  
678

	CE	BW	WW	YW	MK	TM	CM	SC	DC	YG	CW	RE	MB	\$MTI
EPDS	12	-.2	55	82	27	54	6	.25	8	-6	20	1.24	-.25	43
%Rank	40	30	90	85	15	55	55	90	90	20	75	25	85	90

TREF Kasius is a homozygous polled purebred son of TREF Grand Slam out of a picture-perfect Jim Dandie daughter every breeder would love to have on display along the front road. He is solid in his makeup with added length of body, depth of rib and muscle shape. He struts his style and muscle as he moves around the bull pen. Kasius will be a knockout in your program with his light birth weight, top-ranking milk and added carcass traits.

**CALVING EASE: EE**



# YEARLING BULLS



## 36

### TREF KENDRIX 605K

PUREBRED(100/89.5) BULL · HOMO POLLED (T) · RED  
3/11/2022 · TREF 605K · NPM2493706

GV X-MAN 343E  
**GV GRID IRON 862G**  
GV MS AMHERST 5517C

CV X-MAN 446Z  
CV MISS GENERAL 864U  
HUNT AMHERST 71A  
CV MISS TUFF ENUFF 9910W

B BAR BENTLEY 8D  
**TREF HAZEL 605H**  
TREF ZIG ZAG 882Z

IVY'S BUBBA WATSON HTZ24B  
B BAR WHISKEY GIRL  
SYES USER FRIENDLY 524U  
TREF X-POSE 682X

**ACT BW**  
85

**ADJ WW**  
650

	CE	BW	WW	YW	MK	TM	CM	SC	DC	YG	CW	RE	MB	\$MTI
EPDS	14	.5	69	98	22	56	9	.62	15	-.56	23	1.22	-.31	44
%Rank	25	40	45	55	45	45	15	45	30	30	65	30	95	85

This memorable bull is a homozygous polled purebred with a moderate birth weight. He is stacked with calving ease in his pedigree with B Bar Bentley, User Friendly and Tow Truck on the maternal side and is sired by GV Grid Iron. Unlike his paternal brothers, he comes in the cherry red deluxe package. His pedigree is excellent for many different scenarios and his EPDs come in a balanced, rugged package.

**CALVING EASE: EE**

## 37

### TREF KINGS RANSOM 535K

PUREBRED(100/88.4) BULL · HOMO POLLED (T) · RED  
3/16/2022 · TREF 535K · NPM2493694

TOMV DIESEL 619D  
**TREF HARDCORE 204H**  
TREF DELANEY 204D

CV AUSTIN 701A  
MISS TOM 118Y  
JYF YIELDMASTER 80Y  
TREF TREASURE 304T

WULFS CAPER 3303C  
**TREF GLOW 535G**  
TREF ZANDRA 886Z

KORC WULFS SNOW PRINCE  
WULFS ARMADA 3303A  
RICHMOND XANDER SRD 22X  
TREF ROSE 186R

**ACT BW**  
95

**ADJ WW**  
737

	CE	BW	WW	YW	MK	TM	CM	SC	DC	YG	CW	RE	MB	\$MTI
EPDS	8	4	83	127	24	66	6	.35	14	-.61	37	1.43	-.33	48
%Rank	80	95	4	4	30	10	55	85	50	15	15	5	95	60

TREF Kings Ransom is a homozygous polled purebred sired by TREF Hardcore out of a 2-year-old Wulfs Capers daughter. Pound for pound, this bull will deliver. His excellent weaning and yearling EPDs rank in the top 4% of the breed. He has plenty of milking ability and note his top-ranking carcass, ribeye and yield grade EPDs. If you like long bodied and easy natured bulls, Kings Ransom is for you.

**CALVING EASE: E**



# YEARLING BULLS



LOT  
38



LOT 38 • Pictured as calf



TREF HOTSHOT 345H • Sire of Lots 38 & 39



LOT  
39

## 38

### TREF KING TUT 469K

PUREBRED(100/89.4) BULL · DOUBLE POLLED · DOUBLE BLACK  
3/14/2022 · TREF 469K · NPM2493681

B BAR BENTLEY 8D  
**TREF HOTSHOT 345H**  
TREF EMMA LOU 345E

WULFS CAPER 3303C  
**TREF FUSCHIA 469F**  
TREF ANNABELLA 922A

IVY'S BUBBA WATSON HTZ24B  
B BAR WHISKEY GIRL  
TREF COAL TRAIN 707C  
TREF ABILENE 911A

KORC WULFS SNOW PRINCE  
WULFS ARMADA 3303A  
RICHMOND XANDER SRD 22X  
TREF SENSATIONAL 222S

**ACT BW**  
78

**ADJ WW**  
718

	CE	BW	WW	YW	MK	TM	CM	SC	DC	YG	CW	RE	MB	\$MTI
EPDS	14	-1.1	69	99	29	63	9	.75	12	-.56	36	1.33	-.32	44
%Rank	25	15	45	50	5	15	15	35	70	30	20	15	95	85

King Tut leads off the black calving-ease bulls, Lots 38-43. These are the first TREF Hotshot bulls to hit the market and we couldn't be happier. Hotshot has turned out to be a heifer bull deluxe with his trait leading CED and BW EPDs. King Tut is following in his sire's footsteps. His maternal brother was a high-selling heifer bull in 2022, selling to Schock Limousin. Take a second look at this deep-bodied bull. TREF King Tut tipped the scales at 718 lbs. at weaning time. He has a double-digit calving-ease direct number, top 15% for birth weight, adequate growth, top 5% for milk, along with satisfactory carcass numbers. This sound-footed bull will get out and cover your cows.

**CALVING EASE: EEE**

## 39

### TREF KAMIKAZE 522K

PUREBRED(100/89.4) BULL · HET POLLED (T) · HET BLACK (T)  
3/1/2022 · TREF 522K · NPM2493689

B BAR BENTLEY 8D  
**TREF HOTSHOT 345H**  
TREF EMMA LOU 345E

WULFS CAPER 3303C  
**TREF GIRLFRIEND 522G**  
TREF ANNABELLA 922A

IVY'S BUBBA WATSON HTZ24B  
B BAR WHISKEY GIRL  
TREF COAL TRAIN 707C  
TREF ABILENE 911A

KORC WULFS SNOW PRINCE  
WULFS ARMADA 3303A  
RICHMOND XANDER SRD 22X  
TREF SENSATIONAL 222S

**ACT BW**  
74

**ADJ WW**  
715

	CE	BW	WW	YW	MK	TM	CM	SC	DC	YG	CW	RE	MB	\$MTI
EPDS	15	-.9	71	102	29	64	9	.8	12	-.56	38	1.36	-.32	44
%Rank	15	20	35	45	5	10	15	25	70	30	15	10	95	80

TREF Kamikaze is a black, polled purebred sired by TREF Hotshot out of a Wulfs Caper daughter, making him a three-quarter brother to Lot 38. He has top-ranking calving-ease direct and birth weight EPDs balanced nicely with growth EPDs, milk and carcass. Lots of length in his design and volume to compliment him. The total package here!

**CALVING EASE: EEE**  
**F94L MYOSTATIN 2**



# YEARLING BULLS



LOT  
40

40

## TREF KEGGER 628K

PUREBRED(100/89.4) BULL · HOMO POLLED (T) · HOMO BLACK (T)  
3/4/2022 · TREF 628K · NPM2493711

LFLC CHECKING ACCOUNT 701C WULF'S ZIPLOCK N922Z  
**TJ HELIX 751H** LFLC 701X XTRA GOOD  
THAD BUSINESSMAN 750F COLE BUSINESSMAN 104B  
SCCJ MISS FRIENDLY 353A

J BAR J EXCLUSIVE 704E ET WULF'S CLAIM K817C ET **ACT BW**  
**TREF HENSLEY 628H** LIMOLYN XILDA 65  
TREF DAKOTA DELIGHT 288D VL BRUISER 409B **ADJ WW**  
TREF ABILENE 911A TREF ABILENE 911A 614

	CE	BW	WW	YW	MK	TM	CM	SC	DC	YG	CW	RE	MB	\$MTI
EPDS	14	-1.9	53	75	22	49	7	.56	11	-.56	18	1.07	-.33	38
%Rank	25	10	90	90	45	85	35	65	75	30	80	65	95	>95

Here's a handsome dude! He ties his muscle shape nicely down into his quarter, is deep in his rib and flank, has a straight, strong top, and a nice, smooth shoulder. TREF Kegger is a double homozygous purebred sired by TJ Helix out of a J Bar J Exclusive daughter who slipped her hip when he was a month old so he basically raised himself. According to his EPDs and actual BW, Kegger should be a calving ease deluxe bull. And, if you're wanting your calves all black and polled, he should be your pick. Lots to admire here!

**CALVING EASE: EEE**

41

## TREF KANNON 629K

PUREBRED(100/89.4) BULL · HOMO POLLED (P-2) · HET BLACK (T)  
3/1/2022 · TREF 629K · NPM2493712

LFLC CHECKING ACCOUNT 701C WULF'S ZIPLOCK N922Z  
**TJ HELIX 751H** LFLC 701X XTRA GOOD  
THAD BUSINESSMAN 750F COLE BUSINESSMAN 104B  
SCCJ MISS FRIENDLY 353A

TOMV DIESEL 619D CV AUSTIN 701A **ACT BW**  
**TREF HEARTBREAKER 629H** MISS TOM 118Y 77  
TREF AVALON 992A RICHMOND XANDER SRD 22X **ADJ WW**  
TREF WATERFALL 591W TREF WATERFALL 591W 668

	CE	BW	WW	YW	MK	TM	CM	SC	DC	YG	CW	RE	MB	\$MTI
EPDS	9	1.6	70	104	23	57	7	.46	6	-.57	30	1.23	-.34	43
%Rank	70	60	40	40	35	40	35	75	95	30	40	30	>95	85

TREF Kannon is a homozygous polled purebred sired by TJ Helix, the bull throwing disposition and style. He is a paternal brother to Lot 40, only difference being Kannon is heterozygous black. His dam is a first-calf heifer sired by TOMV Diesel and we feel she has done her job well! Growth with added carcass to put money in your pocket.

**CALVING EASE: EE**

42

## TREF KIMBALL 505K

PUREBRED(100/88.3) BULL · HOMO POLLED (P-3) · BLACK  
3/19/2022 · TREF 505K · NPM2493685

SYES USER FRIENDLY 524U WULF'S RANSOM 3059R  
**DLVL FEATHERLITE 8138F** MISS SYES JUSTICE 224S  
DLVL MISS RIPTIDE 929W RMKR RIPTIDE 515R  
TREF MISS 937N

RPY PAYNES CRACKER 17E COLE ARCHITECT 08A **ACT BW**  
**TREF GEMINI 505G** EDW BEACH BODY 70  
TREF WILD ROSE 504W WULF'S RANSOM 3059R **ADJ WW**  
TREF TREASURE 304T TREF TREASURE 304T 674

	CE	BW	WW	YW	MK	TM	CM	SC	DC	YG	CW	RE	MB	\$MTI
EPDS	16	-3.2	52	73	23	48	7	.38	15	-.45	12	.87	-.32	38
%Rank	10	2	95	95	35	90	35	85	30	70	95	90	95	>95

Calving-ease sire alert here! TREF Kimball is a homozygous polled purebred son of DLVL Featherlite out of an RPY Paynes Cracker daughter. This bull screams heifer bull with User Friendly and Riptide on the top side and Paynes Cracker and Ransom on the bottom side of his pedigree. Elite calving-ease with a -3.2 BW EPD and a 16 for CED, complemented with a 70 lb. birth weight. Take note, Featherlite progeny are very docile cattle.

**CALVING EASE: EEE**

43

## TREF KENWORTH 451K

PUREBRED(100/90.4) BULL · HOMO POLLED (T) · HET BLACK (T)  
3/19/2022 · TREF 451K · NPM2493677

SYES USER FRIENDLY 524U WULF'S RANSOM 3059R  
**DLVL FEATHERLITE 8138F** MISS SYES JUSTICE 224S  
DLVL MISS RIPTIDE 929W RMKR RIPTIDE 515R  
TREF MISS 937N

WULF'S CAPER 3303C KORC WULF'S SNOW PRINCE **ACT BW**  
**TREF FRENCH KISS 451F** WULF'S ARMADA 3303A 76  
RMKR CHOCOLATE CHIP 503C DLVL XEROX 023X **ADJ WW**  
RMKR ADRIENNE 366A TREF MISS 937N 651

	CE	BW	WW	YW	MK	TM	CM	SC	DC	YG	CW	RE	MB	\$MTI
EPDS	14	-1.3	54	77	23	50	7	.47	14	-.52	11	.88	-.34	38
%Rank	25	15	90	90	35	80	35	75	50	45	95	90	>95	>95

TREF Kenworth will be a driving force in your herd with calving-ease leading the way. He ranks in the top 15% for birth weight and top 25% for calving-ease direct. He is a paternal brother to Lot 42 with just a little more stretch. He too has a pedigree full of calving-ease specialists. Kenworth is homozygous polled.

**CALVING EASE: EEE**

*When you buy from Treftz Limousin, not only are you getting great Limousin genetics, but outstanding customer service. You're more than a bidding number. After purchasing bulls from Treftz, I get messages and calls from Glenn throughout the year. I've had an opportunity to experience the quality and longevity of Treftz bulls this last breeding season. I put three TREF bulls with 55 first-calf heifer pairs. After leaving the bulls out for 50 days, I had 100% breed back. I always look forward to seeing what Glenn has "up his sleeve" for the sale. Never disappointed in what he has to offer. Keep up the good work Glenn!*

Kerry McLellan  
Lantry, SD



# YEARLING BULLS

## 44

### TREF KOOL HAND LUKE 635K

PUREBRED(100/87.9) BULL · HOMO POLLED · RED  
4/6/2022 · TREF 635K · NPM2493714

GV X-MAN 343E  
**GV GRID IRON 862G**  
GV MS AMHERST 5517C

GV X-MAN 446Z  
GV MISS GENERAL 864U  
HUNT AMHERST 71A  
GV MISS TUFF ENUFF 9910W

J BAR J EXCLUSIVE 704E ET  
**TREF HABANERO 635H**  
TREF FRANCINE 471F

WULFS CLAIM K817C ET  
LIMOLYN XILDA  
COLE DAZZLE 74D  
TREF BLESSED 071B

**ACT BW**  
84

**ADJ WW**  
706

	CE	BW	WW	YW	MK	TM	CM	SC	DC	YG	CW	RE	MB	\$MTI
EPDS	9	.8	70	99	24	59	5	.51	13	-.53	24	1.15	-.19	48
%Rank	70	45	40	50	30	30	70	65	60	45	60	45	65	55

TREF Kool Hand Luke is a homozygous polled, red purebred sired by GV Grid Iron and out of a J Bar J Exclusive daughter. His maternal granddam, TREF Francine 471F, is the mother to the outstanding Lot 4 bull. He was raised by a first calf heifer and could be heifer safe. Moderate in his birth weight, this sire will leave you a nice set of replacement females with his milking ability and calving-ease maternal scores. He puts eye appeal and functionality together in a pleasing package.

**CALVING EASE: EE**

## 45

### TREF KASPER 925K

PUREBRED(100/88.7) BULL · HOMO POLLED (P-1) · RED  
3/3/2022 · TREF 925K · NPM2493731

TOMV DIESEL 619D  
**TREF HARDCORE 204H**  
TREF DELANEY 204D

GV AUSTIN 701A  
MISS TOM 118Y  
JYF YIELDMASTER 80Y  
TREF TREASURE 304T

JYF145X  
**TREF ARIAH 925A**  
TREF YELLOW FLOWER 725Y

TMF UPTOWN 618U  
TMF MISS 226U  
ROMN TOW TRUCK 111T  
TREF 425 U

**ACT BW**  
94

**ADJ WW**  
641

	CE	BW	WW	YW	MK	TM	CM	SC	DC	YG	CW	RE	MB	\$MTI
EPDS	8	2.1	69	108	26	60	6	.2	15	-.59	32	1.3	-.28	46
%Rank	80	70	45	30	15	25	55	90	30	20	35	20	90	75

TREF Kasper is a homozygous polled purebred son of TREF Hardcore with stretch, style and a great disposition. With the milking ability and docility on both sides of his pedigree, he should make great females. He boasts nice, clean lines with added dimension and shape. Kasper will make a nice addition to your program.

**CALVING EASE: EE**



LOT  
45

## 46

### TREF KARMA 346K

PUREBRED(100/88.9) BULL · POLLED · RED  
4/10/2022 · TREF 346K · NPM2493673

RUNL BRANCH 230 B  
**DLVL GUARDIAN 967G**  
DLVL MISS WAGONTRAIN 2119

RUNL STETSON 850S  
RUNL YAYHOO 439 Y  
WULFS WAGON TRAIN 3197W  
DLVL SEASON 615S

TREF COAL TRAIN 707C  
**TREF EKKO 346E**  
TREF APRICOT 986A

RPY PAYNES DERBY 46Z  
TREF YESTERDAY 707Y  
RICHMOND XANDER SRD 22X  
TREF ROSE 186R

**ACT BW**  
99

**ADJ WW**  
742

	CE	BW	WW	YW	MK	TM	CM	SC	DC	YG	CW	RE	MB	\$MTI
EPDS	9	2.4	65	92	24	57	4	.47	12	-.59	27	1.29	-.23	46
%Rank	70	80	60	65	30	40	85	75	70	20	50	20	75	70

Check out this chunk. TREF Karma is a polled purebred. His is the only DLVL Guardian bull in the sale and one that very well could have been in the first pen had he not also been the youngest calf in the sale. Deep bodied, cherry red and made very correct. A great disposition to boot. Karma tipped the scales at 740+ lbs. at weaning and will transmit that to his calves. He also offers breed-leading carcass traits.

**CALVING EASE: EE**



LOT  
46

We have Limousin, Hereford and Lim x Sim cows in our commercial herd. The Treftz bulls we have used on our cows produce calves with muscle, structural soundness, good dispositions and excellent growth rates regardless of maternal breed. The Treftz bulls come with good feet and structure and are healthy, contributing to their longevity in our herd. The bulls are easy to maintain and have produced replacement heifers for us that exhibit their sire's traits of soundness, production, disposition and longevity that we are looking for.

Bob Michelson, G-M Limousin  
Cando, ND



# YEARLING BULLS



**TREF GRAND SLAM 111G**  
Sire of Lots 47,48,50,51 & 52



**TREF JAMMER 117J** • Full brother to Lot 48



**47**

## TREF KUNG FU 325K

PUREBRED(100/89.2) BULL · HOMO POLLED (T) · RED  
3/19/2022 · TREF 325K · NPM2493669

TREF COAL TRAIN 707C  
**TREF GRAND SLAM 111G**  
TREF CHANEL 111C

ROMN ZINGRAY 125Z  
**TREF EMMA 325E**  
TREF YELLOW FLOWER 725Y

RPY PAYNES DERBY 46Z  
TREF YESTERDAY 707Y  
JYF YIELDMASTER 80Y  
TREF WINDSWEPT 511W

WULFS WAGON TRAIN 3197W  
ROMN RAZZLE DAZZLE 10R  
ROMN TOW TRUCK 111T  
TREF 425 U

**ACT BW**  
90

**ADJ WW**  
628

	CE	BW	WW	YW	MK	TM	CM	SC	DC	YG	CW	RE	MB	\$MTI
EPDS	12	-.2	53	82	23	49	7	.8	12	-.61	21	1.26	-.26	42
%Rank	40	30	90	85	35	85	35	25	70	15	70	25	85	95

One word describes this calf, stout! TREF Kung Fu will add lots of positives to his offspring. He is a homozygous polled purebred, sired by TREF Grand Slam and from a ROMN Zingray daughter. Kung Fu is desirable in his design, the kind cattlemen appreciate. He will tone down the frame size of your cows if that is what you're looking to accomplish. His dam is as broody as they get.

**CALVING EASE: EE**

**48**

## TREF KONAN 117K

PUREBRED(92/89) BULL · HOMO POLLED (T) · RED  
3/12/2022 · TREF 117K · NPM2493655

TREF COAL TRAIN 707C  
**TREF GRAND SLAM 111G**  
TREF CHANEL 111C

ROMN ZINGRAY 125Z  
**TREF CORSAGE 117C**  
TREF YOKO 717Y

RPY PAYNES DERBY 46Z  
TREF YESTERDAY 707Y  
JYF YIELDMASTER 80Y  
TREF WINDSWEPT 511W

WULFS WAGON TRAIN 3197W  
ROMN RAZZLE DAZZLE 10R  
TREF WARLORD 334W  
TREF STAR LIGHT 216S

**ACT BW**  
95

**ADJ WW**  
717

	CE	BW	WW	YW	MK	TM	CM	SC	DC	YG	CW	RE	MB	\$MTI
EPDS	12	.5	65	102	24	57	8	.85	11	-.59	29	1.35	-.25	46
%Rank	40	40	60	45	30	40	25	25	75	20	45	10	85	75

TREF Konan excels in natural muscle and phenotype. He is moderate framed, thick made and as bold as they get. This homozygous polled purebred is sired by TREF Grand Slam son out of a ROMN Zingray daughter which makes him a three-quarter brother to Lot 47. His full brother, TREF Jammer, was a highlight in our 2022 sale and had the exact look, just lighter in color.

**CALVING EASE: EE**



# YEARLING BULLS

## 49

### 1617 COMMERCIAL

COMMERCIAL  
3/11/2022

GV AUSTIN 701A  
**TOMV DIESEL 619D**  
MISS TOM 118Y

CV X-MAN 701X  
CV MISS LODESTAR 701T  
WULFS WAGON TRAIN 3197W  
MISS TOM 7106T

ACT BW  
95

ADJ WW  
749

1617 (F1 HERFORD/ANGUS)

CE	BW	WW	YW	MK	TM	CM	SC	DC	YG	CW	RE	MB	\$MTI
----	----	----	----	----	----	----	----	----	----	----	----	----	-------

EPDS

%Rank

I had a customer ask me last year when I was going to raise a red baldie for the sale. Well, here he is. He is an extra-long bodied Diesel son with a beautiful brockle-face on him. His dam is a recipient cow that didn't settle to embryo transfer. I am not sure that was a bad thing in this case. He's a tremendous commercial bull with lots of power to him. Loaded with muscle and depth of body. He'll work well in your program.

CALVING EASE: E



LOT  
49

## 50

### TREF KINGDOM 899K

PUREBRED(100/88.4) BULL · HOMO POLLED (T) · RED  
3/21/2022 · TREF 899K · NPM2493729

TREF COAL TRAIN 707C  
**TREF GRAND SLAM 111G**  
TREF CHANEL 111C

RPY PAYNES DERBY 46Z  
TREF YESTERDAY 707Y  
JYF YIELDMASTER 80Y  
TREF WINDSWEPT 511W

ACT BW  
85

ADJ WW  
681

MR SYES WARDEN 472R  
**TREF ZIP LINE 899Z**  
TREF TONYA 399T

DVFC WARDEN 233K  
MISS SYES 760 473K  
ROMN JUSTICE  
TREF 599J

CE	BW	WW	YW	MK	TM	CM	SC	DC	YG	CW	RE	MB	\$MTI
----	----	----	----	----	----	----	----	----	----	----	----	----	-------

EPDS	11	-.3	55	77	23	51	6	.4	10	-.59	18	1.24	-.29	41
------	----	-----	----	----	----	----	---	----	----	------	----	------	------	----

%Rank	50	25	90	90	35	75	55	75	80	20	80	25	90	95
-------	----	----	----	----	----	----	----	----	----	----	----	----	----	----

Conquer the pasture with TREF Kingdom. This deep bodied, massively muscled bull is a homozygous polled purebred. His sire is TREF Grand Slam and dam is a Mr SYES Warden daughter. He posts a negative birth weight of -0.3 with functional carcass numbers. He is capacious in his rib design. His sons and daughters will be the talk at the sale barn.

CALVING EASE: EE



LOT  
50

## 51

### TREF KILROY 997K

PUREBRED(100/88.9) BULL · HOMO POLLED (T) · RED  
3/16/2022 · TREF 997K · NPM2493744

TREF COAL TRAIN 707C  
**TREF GRAND SLAM 111G**  
TREF CHANEL 111C

RPY PAYNES DERBY 46Z  
TREF YESTERDAY 707Y  
JYF YIELDMASTER 80Y  
TREF WINDSWEPT 511W

ACT BW  
85

ADJ WW  
633

RICHMOND XANDER SRD 22X  
**TREF ADDISON 997A**  
TREF X-QUISITE 634X

RPY PAYNES MARATHON 47U  
RICHMOND TWIST SRD 22T  
ROMN TOW TRUCK 111T  
TREF 334C

CE	BW	WW	YW	MK	TM	CM	SC	DC	YG	CW	RE	MB	\$MTI
----	----	----	----	----	----	----	----	----	----	----	----	----	-------

EPDS	10	1.1	54	79	26	53	7	.45	3	-6	18	1.21	-.24	43
------	----	-----	----	----	----	----	---	-----	---	----	----	------	------	----

%Rank	60	50	90	85	15	65	35	75	>95	20	80	35	80	90
-------	----	----	----	----	----	----	----	----	-----	----	----	----	----	----

Here's another son of TREF Grand Slam we think you'll really like. TREF Kilroy is a red, homozygous polled purebred from one of the heaviest milking Richmond Xander daughters in the herd. He is moderate in his birth weight, has plenty of milking ability with solid set of carcass numbers. Kilroy was here and he should be on your short list.

CALVING EASE: EE

## 52

### TREF KALAMAZOO 165K

PUREBRED(100/88.8) BULL · HET POLLED (T) · RED  
3/9/2022 · TREF 165K · NPM2493657

TREF COAL TRAIN 707C  
**TREF GRAND SLAM 111G**  
TREF CHANEL 111C

RPY PAYNES DERBY 46Z  
TREF YESTERDAY 707Y  
JYF YIELDMASTER 80Y  
TREF WINDSWEPT 511W

ACT BW  
88

ADJ WW  
670

TREF ZEUS 232Z  
**TREF CACEY 165C**  
TREF PETITE 065P

ROMN TOW TRUCK 111T  
TREF RED WINE 232R  
ROMN JUSTICE  
TREF 565J

CE	BW	WW	YW	MK	TM	CM	SC	DC	YG	CW	RE	MB	\$MTI
----	----	----	----	----	----	----	----	----	----	----	----	----	-------

EPDS	11	1.4	59	89	27	57	6	.6	8	-.55	27	1.17	-.23	44
------	----	-----	----	----	----	----	---	----	---	------	----	------	------	----

%Rank	50	60	80	70	15	40	55	45	90	35	50	40	75	85
-------	----	----	----	----	----	----	----	----	----	----	----	----	----	----

Here's a red, polled purebred son of TREF Grand Slam, and as you've seen by the other Grand Slam sons in the offering, they are good! His dam is a ranch favorite TREF Zeus daughter that has worked well in our program. Her daughters never leave the ranch and her sons are bull buyer favorites. Breed-leading milking ability with good carcass traits rounds out this impressive breeding piece.

CALVING EASE: EE



# YEARLING BULLS

## 53

### TREF KIT KAT 111K

PUREBRED(96/90) BULL · DOUBLE POLLED · RED  
2/13/2022 · TREF 111K · NPM2493654

GV AUSTIN 701A  
**TOMV DIESEL 619D**  
MISS TOM 118Y

CV X-MAN 701X  
CV MISS LODESTAR 701T  
WULFS WAGON TRAIN 3197W  
MISS TOM 7106T

JYF YIELDMASTER 80Y  
**TREF CHANEL 111C**  
TREF WINDSWEPT 511W

TMF SYMBOL 188S  
AIRLIE TARA  
ROMN TOW TRUCK 111T  
TREF SCARLET 310C

**ACT BW**  
89

**ADJ WW**  
623

	CE	BW	WW	YW	MK	TM	CM	SC	DC	YG	CW	RE	MB	\$MTI
EPDS	9	1.2	65	101	26	58	8	-.05	15	-.58	30	1.3	-.23	46
%Rank	70	55	60	45	15	35	25	>95	30	25	40	20	75	70

Gimme a break, have a Kit Kat. TREF Kit Kat is a red, double polled purebred. He could be one of the last of the TOMV Diesel sons we sell as semen is getting short. His dam is a powerful, huge volumed Yieldmaster daughter and the dam of TREF Grandslam. This guy is long bodied, loaded with muscle and correct off his feet and legs. Milking ability and carcass traits top off this sweet deal!

**CALVING EASE: E**



## 54

### TREF KNOX 460K

PUREBRED(100/90.5) BULL · HOMO POLLED (T) · RED  
3/5/2022 · TREF 460K · NPM2493678

B BAR AUSTIN HEALY 4D ET  
**ANCHOR B GOLD RUSH 48C**  
ANCHOR B BAILEY 21B

IVY'S BUBBA WATSON HTZ24B  
B BAR POLLED UNIQUE  
ANCHOR B "THE BOSS"  
ANCHOR B ZAHARA

WULFS CAPER 3303C  
**TREF FLIRT 460F**  
TREF X-CITEMENT 606X

KORC WULFS SNOW PRINCE  
WULFS ARMADA 3303A  
ROMN TOW TRUCK 111T  
TREF SASSY JO 306S

**ACT BW**  
104

**ADJ WW**  
791

	CE	BW	WW	YW	MK	TM	CM	SC	DC	YG	CW	RE	MB	\$MTI
EPDS	4	5.5	91	129	28	74	3	1.05	18	-.68	42	1.66	-.47	46
%Rank	>95	>95	1	3	10	1	95	15	3	3	10	1	>95	75

Take note of the breed-leading growth this son of Anchor B Gold Rush posts. TREF Knox is a red, homozygous polled purebred that ranks in the top 1% for weaning weight and ribeye area, top 3% for yearling weight and yield grade. He is larger framed bull with power on hoof as well as in his EPD profile. Putting dollars in your pocket is what the cattle industry is about and TREF Knox will help with that. He calved unassisted, as we expect all our cows to.

**CALVING EASE: E**

## 55

### TREF KID ROCK 467K

PUREBRED(100/86.6) BULL · HOMO POLLED (T) · RED  
3/13/2022 · TREF 467K · NPM2493680

WULFS DEVILS LAKE K118D ET  
**SYES HUNTER 935H**  
MISS SYES 464Z 933B

WULFS BILLY THE KID K234B  
WULFS YOUR CHOICE 1419Y  
SYES XEROX 464Z  
MISS SYES SEN LODESTAR 93

COLE DAZZLE 74D  
**TREF FELICIA 467F**  
TREF CACEY 165C

COLE ARCHITECT 08A  
COLE MISS NASA 006X  
TREF ZEUS 232Z  
TREF PETITE 065P

**ACT BW**  
97

**ADJ WW**  
728

	CE	BW	WW	YW	MK	TM	CM	SC	DC	YG	CW	RE	MB	\$MTI
EPDS	7	3.5	76	107	22	60	2	.75	15	-.47	31	1.11	-.18	50
%Rank	90	95	20	30	45	25	>95	35	30	65	35	55	60	45

TREF Kid Rock is a dark cherry red, homozygous polled purebred sired by SYES Hunter and out of a COLE Dazzle daughter. With a strong top, extra muscle and stretch, this bull will work great for years to come. He offers breed-leading weaning and yearling weight EPDs.

**CALVING EASE: E**

*I have been in the cattle business for 15 years. As a young cattle breeder, I enjoy discussing and learning new ways to my business. When I met Glenn 4 years ago, he was a seasoned breeder. He quickly went from a business associate to a mentor for me because of his willingness to guide me. As I grow my business, it doesn't matter if I have 10 cows or 100, Glenn is happy to field my questions from breeding to mineral programs which help me in my own business. He goes above and beyond by providing text and calls for updates on calves and cows. It is because of his trusted relationship that he builds with his customers that I have purchased cattle from him sight unseen. I know that it is to my convenience to do this; however it is my pleasure to pick them out in person to get a little more time to soak up some of Glenn's knowledge and advice since he is not afraid to share how he raises his animals. It is for all these reasons that I truly appreciate Glenn as a mentor, a business associate, and a confidant. He inspires me to be more like him in my business raising cattle, selling, and customer relations, but especially as a good person. Glenn, I am truly grateful to have crossed paths and continue to grow and learn from you.*

Ryan Reed, Double RR Limousin  
Richmond, KS



# YEARLING BULLS

## 56

### 1924 COMMERCIAL

COMMERCIAL  
3/29/2022

GV AUSTIN 701A  
**TOMV DIESEL 619D**  
MISS TOM 118Y

CV X-MAN 701X  
CV MISS LODESTAR 701T  
WULFS WAGON TRAIN 3197W  
MISS TOM 7106T

ACT BW  
90

ADJ WW  
791

1924 (F1 HERFORD/ANGUS)

CE	BW	WW	YW	MK	TM	CM	SC	DC	YG	CW	RE	MB	\$MTI
----	----	----	----	----	----	----	----	----	----	----	----	----	-------

EPDS

%Rank

This commercial bull brings a lot of stretch and power to the game. We've been hearing great results from the first baldie bulls we sold that have weaned their first calf crop and he should be no different. You can bid with confidence here.

**CALVING EASE: E**

## 57

### TREF KOOPER 577K

PUREBRED(94/87.1) BULL · HOMO POLLED · RED  
3/23/2022 · TREF 577K · NPM2493701

SYES USER FRIENDLY 524U  
**DLVL FEATHERLITE 8138F**  
DLVL MISS RIPTIDE 929W

WULFS RANSOM 3059R  
MISS SYES JUSTICE 224S  
RMKR RIPTIDE 515R  
TREF MISS 937N

ACT BW  
88

ADJ WW  
687

COLE DAZZLE 74D  
**TREF GEMMA 577G**  
TREF CASSIE 177C

COLE ARCHITECT 08A  
COLE MISS NASA 006X  
TREF ZEUS 232Z  
TREF ZOPHIE 841Z

CE	BW	WW	YW	MK	TM	CM	SC	DC	YG	CW	RE	MB	\$MTI
----	----	----	----	----	----	----	----	----	----	----	----	----	-------

EPDS

%Rank

TREF Kooper is a red, homozygous polled purebred sired by DLVL Featherlite and a maternal grandson of TREF Junk Yard Dog's dam who topped our 2022 sale. This bull brings a moderate birth weight blended nicely with milking ability to the table. He's calm, clean in his lines with the added depth and dimension cattlemen like.

**CALVING EASE: E**

## 58

### TREF KIMBO SLICE 569K

PUREBRED(100/90.2) BULL · HOMO POLLED (P-3) · RED  
3/17/2022 · TREF 569K · NPM2493699

SYES USER FRIENDLY 524U  
**DLVL FEATHERLITE 8138F**  
DLVL MISS RIPTIDE 929W

WULFS RANSOM 3059R  
MISS SYES JUSTICE 224S  
RMKR RIPTIDE 515R  
TREF MISS 937N

ACT BW  
92

ADJ WW  
685

WULFS AMAZING BULL T341A  
**TREF GEORGEIOUS 569G**  
TREF CELESTE 169C

HUNT MR JOCK 44J  
WULFS ULTRA DIAMOND 8571U  
TREF X-PRESSWAY 170X  
TREF YOUNG THING 769Y

CE	BW	WW	YW	MK	TM	CM	SC	DC	YG	CW	RE	MB	\$MTI
----	----	----	----	----	----	----	----	----	----	----	----	----	-------

EPDS

%Rank

Here's a homozygous polled, dark red purebred son of DLVL Featherlite from a high maternal Wulfs Amazing Bull daughter. TREF Kimbo Slice offers a moderate birth weight. He's an appealing bull with nice muscle shape and rib capacity.

**CALVING EASE: E**

## 59

### TREF KNUCKLEBALL 639K

PUREBRED(100/90.2) BULL · HOMO POLLED (T) · RED  
3/9/2022 · TREF 639K · NPM2493715

WULFS CAPER 3303C  
**TREF EZ STREET 107E**  
TREF COCOA BEAN 107C

KORC WULFS SNOW PRINCE  
WULFS ARMADA 3303A  
DLVL AEROSMITH 329A  
TREF ASIA 907A

ACT BW  
98

ADJ WW  
655

TOMV DIESEL 619D  
**TREF HIDDEN GEM 639H**  
TREF ZENA 836Z

GV AUSTIN 701A  
MISS TOM 118Y  
RICHMOND XANDER SRD 22X  
TREF PERFECTION 036P

CE	BW	WW	YW	MK	TM	CM	SC	DC	YG	CW	RE	MB	\$MTI
----	----	----	----	----	----	----	----	----	----	----	----	----	-------

EPDS

%Rank

TREF Knuckleball is a red, homozygous polled purebred. He is the only son by TREF EZ Street born this year and from a TOMV Diesel daughter. He has 10 EPD traits that rank in the top 25% of the breed. This young bull has added growth traits with breed-leading docility and carcass values. You'll appreciate his calm demeanor, look and style.

**CALVING EASE: E**

## 60

### TREF KENYA 288K

PUREBRED(100/89.7) BULL · HET POLLED (T) · HET BLACK (T)  
3/17/2022 · TREF 288K · NPM2493663

B BAR BENTLEY 8D  
**TREF HOTSHOT 345H**  
TREF EMMA LOU 345E

IVY'S BUBBA WATSON HTZ24B  
B BAR WHISKEY GIRL  
TREF COAL TRAIN 707C  
TREF ABILENE 911A

ACT BW  
92

ADJ WW  
689

VL BRUISER 409B  
**TREF DAKOTA DELIGHT 288D**  
TREF ABILENE 911A

WULFS YANKEE K689Y  
RMKR UNEQUALED 812U  
VL YES MAN 111Y  
TREF TONI 311T

CE	BW	WW	YW	MK	TM	CM	SC	DC	YG	CW	RE	MB	\$MTI
----	----	----	----	----	----	----	----	----	----	----	----	----	-------

EPDS

%Rank

TREF Kenya is a black, polled purebred sired by our herd sire TREF Hotshot and from a VL Bruiser daughter. This young bull is moderate in his birth weight with a -0.1 EPD and a double-digit CED number with added milk and carcass. He is a very long patterned bull that will really add some stretch and style to a set of calves. We think he'd really dress up some Angus-based cows. Kenya does a lot of things right in a pleasing package.

**CALVING EASE: E**

*Commitment and Quality. Two things that are a necessity in the cattle industry. Treftz Limousin amplifies both. Glenn's commitment to quality is reflected in every animal he raises and sells. Some things COST and some things PAY. Pay yourself by investing in Treftz's commitment to quality! Customer for life. None better!*

Doug Henley  
Britton, SD



# OPEN YEARLING HEIFERS

## OPEN YEARLING HEIFERS • LOTS 61A – 70B

Our replacement heifers get no creep feed and this year were weaned November 1. They were sorted off 2 months before the sale and given a little more grain than their contemporaries. We don't let our heifers get "addicted" to corn. They're expected to get the job done without much supplementation when they become cows. If you're in the game to produce the kind of bulls we've become known for, these are the type of TREF females that will take you to that level. They've been paired to be evenly matched by pedigree, frame, and/or color. Selling choice or take them both. As before, we will offer free semen on any bull in our battery to breed them.



### 61A

#### TREF KYLIE 802K ET

LIM-FLEX(75/70.4) COW · HET POLLED (T) · RED  
2/20/2022 · TREF 802K · LFF2521082

GV AUSTIN 701A  
**TOMV DIESEL 619D**  
MISS TOM 118Y

CV X-MAN 701X  
CV MISS LODESTAR 701T  
WULFS WAGON TRAIN 3197W  
MISS TOM 7106T

**ACT BW**  
85

**ADJ WW**  
531

**ADJ YW**  
888

CF JIM DANDIE 216U  
**TREF BRYNN 075B**  
TREF 475

EAFF POLLED HUMMER 530P  
CF POLLED DANDIE 040P

	CE	BW	WW	YW	MK	TM	CM	SC	DC	YG	CW	RE	MB	\$MTI
EPDS	8	4	75	114	29	67	7	.15	9	-.53	36	1.06	-.19	50
%Rank	90	>95	35	45	3	10	35	>95	95	1	45	10	>95	95

**GE-EPDS**

### 61B

#### TREF KATE 833K

LIM-FLEX(75/70.4) COW · DOUBLE POLLED · RED  
3/19/2022 · TREF 833K · LFF2493649

GV AUSTIN 701A  
**TOMV DIESEL 619D**  
MISS TOM 118Y

CV X-MAN 701X  
CV MISS LODESTAR 701T  
WULFS WAGON TRAIN 3197W  
MISS TOM 7106T

**ACT BW**  
105

**ADJ WW**  
620

**ADJ YW**  
990

CF JIM DANDIE 216U  
**TREF BRYNN 075B**  
TREF 475

EAFF POLLED HUMMER 530P  
CF POLLED DANDIE 040P

	CE	BW	WW	YW	MK	TM	CM	SC	DC	YG	CW	RE	MB	\$MTI
EPDS	6	6.2	85	135	29	72	6	.15	11	-.55	37	1.23	-.22	52
%Rank	>95	>95	10	10	3	2	55	>95	80	1	45	3	>95	90

These two heifers are full sisters to the ET bulls at the beginning of the sale. A ton of grow and stretch in these females with maternal on both sides as well. Potential donor material!



# OPEN YEARLING HEIFERS



LOT  
**62A**

**62A**

## TREF KAT 801K

PUREBRED(95/87.2) COW · DOUBLE POLLED · RED  
2/20/2022 · TREF 801K · NPF2493674

TOMV DIESEL 619D  
**TREF HARDCORE 204H**  
TREF DELANEY 204D

TREF COAL TRAIN 707C  
**TREF FELICITY 403F**  
TREF ZOLA 803Z

GV AUSTIN 701A  
MISS TOM 118Y  
JYF YIELDMASTER 80Y  
TREF TREASURE 304T

RPY PAYNES DERBY 46Z  
TREF YESTERDAY 707Y  
JBV LOMBARDI 911W  
TREF SASSY JO 306S

**ACT BW**  
80

**ADJ WW**  
513

**ADJ YW**  
833

	CE	BW	WW	YW	MK	TM	CM	SC	DC	YG	CW	RE	MB	\$MTI
EPDS	8	2.7	72	112	26	62	6	.25	12	-.57	32	1.29	-.25	47
%Rank	80	85	35	20	15	15	55	90	70	30	35	20	85	65



LOT  
**62B**

**62B**

## TREF KLARA 851K

PUREBRED(96/88.5) COW · DOUBLE POLLED · RED  
4/2/2022 · TREF 851K · NPF2493653

TOMV DIESEL 619D  
**TREF HARDCORE 204H**  
TREF DELANEY 204D

JYF YIELDMASTER 80Y  
**TREF CINDERELLA 110C**  
TREF ZIPPY 810Z

GV AUSTIN 701A  
MISS TOM 118Y  
JYF YIELDMASTER 80Y  
TREF TREASURE 304T

TMF SYMBOL 188S  
AIRLIE TARA  
ROMN TOW TRUCK 111T  
TREF SCARLET 310G

**ACT BW**  
84

**ADJ WW**  
555

**ADJ YW**  
983

	CE	BW	WW	YW	MK	TM	CM	SC	DC	YG	CW	RE	MB	\$MTI
EPDS	8	2.6	73	114	23	59	5	-.1	13	-.58	33	1.28	-.23	48
%Rank	80	80	30	15	35	30	70	>95	60	25	30	20	75	55

TREF Hardcore is making a huge impact across the country and Canada because of heifers like these. These are a couple of the best we have and we are offering them for sale! Unbeatable dispositions here.



LOT  
**63A**

**63A**

## TREF KACEY 803K

PUREBRED(100/90.4) COW · DOUBLE POLLED · RED  
2/21/2022 · TREF 803K · NPF2493661

B BAR AUSTIN HEALY 4D ET  
**ANCHOR B GOLD RUSH 48G**  
ANCHOR B BAILEY 21B

VL YES MAN 111Y  
**TREF DREAMY 203D**  
TREF ZAYLIE 807Z

IVY'S BUBBA WATSON HTZ24B  
B BAR POLLED UNIQUE  
ANCHOR B "THE BOSS"  
ANCHOR B ZAHARA

RUNL TRAVIS 332T  
VL TOLD YA SO  
RICHMOND XANDER SRD 22X  
TREF WANDA 507W

**ACT BW**  
103

**ADJ WW**  
656

**ADJ YW**  
1092

	CE	BW	WW	YW	MK	TM	CM	SC	DC	YG	CW	RE	MB	\$MTI
EPDS	5	4.8	88	120	28	72	4	.75	16	-.69	38	1.67	-.45	46
%Rank	>95	>95	2	10	10	1	85	35	15	2	15	1	>95	75



LOT  
**63B**

**63B**

## TREF KATELYN 813K

PUREBRED(100/89.9) COW · DOUBLE POLLED · RED  
2/25/2022 · TREF 813K · NPF2493683

B BAR AUSTIN HEALY 4D ET  
**ANCHOR B GOLD RUSH 48G**  
ANCHOR B BAILEY 21B

WULFS CAPER 3303C  
**TREF FLASH DANCE 488F**  
TREF ZIG ZAG 882Z

IVY'S BUBBA WATSON HTZ24B  
B BAR POLLED UNIQUE  
ANCHOR B "THE BOSS"  
ANCHOR B ZAHARA

KORC WULFS SNOW PRINCE  
WULFS ARMADA 3303A  
SYES USER FRIENDLY 524U  
TREF X-POSE 682X

**ACT BW**  
98

**ADJ WW**  
627

**ADJ YW**  
1013

	CE	BW	WW	YW	MK	TM	CM	SC	DC	YG	CW	RE	MB	\$MTI
EPDS	5	4.6	91	128	28	73	3	1.1	18	-.67	40	1.66	-.49	45
%Rank	>95	>95	1	3	10	1	95	10	3	4	10	1	>95	80

These dark cherry red Anchor B Gold Rush daughters are out of very high producing cows. Check out their big growth EPDs that match up with their actual big growth figures! We only have three and here are two of them.



# OPEN YEARLING HEIFERS



LOT  
**64A**



LOT  
**64B**

## 64A

### TREF KASSIE 834K

PUREBRED(96/87.7) COW · DOUBLE POLLED · RED  
3/19/2022 · TREF 834K · NPF2493662

GV AUSTIN 701A  
**TOMV DIESEL 619D**  
MISS TOM 118Y

GV X-MAN 701X  
GV MISS LODESTAR 701T  
WULFS WAGON TRAIN 3197W  
MISS TOM 7106T

**ACT BW**  
82

**ADJ WW**  
504

**ADJ YW**  
911

JYF YIELDMASTER 80Y  
**TREF DELANEY 204D**  
TREF TREASURE 304T

TMF SYMBOL 188S  
AIRLIE TARA  
ROMN JUSTICE  
TREF 403H

	CE	BW	WW	YW	MK	TM	CM	SC	DC	YG	CW	RE	MB	\$MTI
EPDS	10	1.3	64	103	27	59	7	0	16	-57	30	1.29	-25	45
%Rank	60	55	65	40	15	30	35	95	15	30	40	20	85	75

## 64B

### TREF KAI 848K

FULLBLOOD(100/100) COW · DOUBLE POLLED · RED  
3/25/2022 · TREF 848K · NPF2493725

GBBL KEN'S JIM DANDIE II 153D  
**KEN'S HIGH VOLTAGE**  
AR YU LUCKY HOO 127Y

AR ZILLION 226Z  
**AR FOREVER A LADY 8166F**  
AR WHIMSY LADY 917W

CFJIM DANDIE 216U  
CLEAR CREEK ABBEY 152T  
AR POL POLITITIAN 4132P  
AR POL LUCKY HOO 154L

CF POLLED MESQUITE 268W  
AR SOUTHERN CHERRY 611S  
AR POL POLITITIAN 4132P  
AR POL PUDDING 468P

**ACT BW**  
90

**ADJ WW**  
542

**ADJ YW**  
903

	CE	BW	WW	YW	MK	TM	CM	SC	DC	YG	CW	RE	MB	\$MTI
EPDS	8	2.7	50	62	27	52	5	-28	5	-66	12	1.13	-2	43
%Rank	80	85	95	>95	15	70	70	>95	95	10	95	50	70	90

Only because of our high cow and replacement numbers are we offering heifers of this caliber. Lot 64A is a full sister to TREF Hardcore who took the breed by storm in 2021- no more to say on her. Lot 64B is a Fullblood, and the only Fullblood heifer to be born on the place and we are offering her on February 11. Both heifers exhibit lots of style, you cannot go wrong.



LOT  
**65A**



LOT  
**65B**

## 65A

### TREF KINLEY 822K

PUREBRED(94/86.4) COW · DOUBLE POLLED · RED  
3/12/2022 · TREF 822K · NPF2493684

RUNL BRANCH 230 B  
**DLVL GUARDIAN 967G**  
DLVL MISS WAGONTRAIN 2119

RUNL STETSON 850S  
RUNL YAYHOO 439 Y  
WULFS WAGON TRAIN 3197W  
DLVL SEASON 615S

**ACT BW**  
85

**ADJ WW**  
593

**ADJ YW**  
934

COLE DAZZLE 74D  
**TREF FERGIE 497F**  
TREF CASSIE 177C

COLE ARCHITECT 08A  
COLE MISS NASA 006X  
TREF ZEUS 232Z  
TREF ZOPHIE 841Z

	CE	BW	WW	YW	MK	TM	CM	SC	DC	YG	CW	RE	MB	\$MTI
EPDS	10	1.7	71	101	23	59	4	.72	13	-52	34	1.23	-21	48
%Rank	60	65	35	45	35	30	85	35	60	45	25	30	70	60

## 65B

### TREF KAYDENCE 838K

PUREBRED(87/80.2) COW · DOUBLE POLLED · RED  
3/20/2022 · TREF 838K · NPF2493676

RUNL BRANCH 230 B  
**DLVL GUARDIAN 967G**  
DLVL MISS WAGONTRAIN 2119

JYF YIELDMASTER 80Y  
**TREF FOX TROT 423F**  
TREF BRYNN 075B

RUNL STETSON 850S  
RUNL YAYHOO 439 Y  
WULFS WAGON TRAIN 3197W  
DLVL SEASON 615S

TMF SYMBOL 188S  
AIRLIE TARA  
CFJIM DANDIE 216U  
TREF 475

**ACT BW**  
77

**ADJ WW**  
588

**ADJ YW**  
983

	CE	BW	WW	YW	MK	TM	CM	SC	DC	YG	CW	RE	MB	\$MTI
EPDS	13	-3	59	84	24	53	6	.1	11	-57	24	1.17	-11	48
%Rank	30	25	80	80	30	65	55	95	75	30	60	40	40	60

Deep bodied and very sound describe these two heifers. They both have that brood cow look to them already. DLVL Guardian sired some of the most docile offspring while he was here. The dam to Lot 65A is a maternal sister to our bull, Junk Yard Dog, who topped our sale last year at \$40,000. Lot 65B is a granddaughter to TREF Brynn 075B who produced the flushmates at the beginning of the sale.



# OPEN YEARLING HEIFERS



LOT  
**66A**



LOT  
**66B**

**66A**

## TREF KAYLA 809K

PUREBRED(96/88.2) COW · DOUBLE POLLED · DOUBLE BLACK  
2/23/2022 · TREF 809K · NPF2493666

B BAR BENTLEY 8D  
**TREF HOTSHOT 345H**  
TREF EMMA LOU 345E

VL BRUISER 409B  
**TREF DAKOTA DOLLY 296D**  
TREF YOU'RE AWESOME 799Y

IVY'S BUBBA WATSON HTZ24B  
B BAR WHISKEY GIRL  
TREF COAL TRAIN 707C  
TREF ABILENE 911A

WULFS YANKEE K689Y  
RMKR UNEQUALED 812U  
TREF WARLORD 334W  
TREF 599J

ACT BW  
75

ADJ WW  
550

ADJ YW  
841

	CE	BW	WW	YW	MK	TM	CM	SC	DC	YG	CW	RE	MB	\$MTI
EPDS	14	-.4	65	98	30	62	8	1	13	-.56	36	1.31	-.31	43
%Rank	25	25	60	55	4	15	25	15	60	30	20	15	95	90

**66B**

## TREF KISSES 810K

PUREBRED(100/90.2) COW · DOUBLE POLLED · DOUBLE BLACK  
2/23/2022 · TREF 810K · NPF2493679

B BAR BENTLEY 8D  
**TREF HOTSHOT 345H**  
TREF EMMA LOU 345E

WULFS CAPER 3303C  
**TREF FLAWLESS 461F**  
TREF AMERICAN HONEY 966A

IVY'S BUBBA WATSON HTZ24B  
B BAR WHISKEY GIRL  
TREF COAL TRAIN 707C  
TREF ABILENE 911A

KORC WULFS SNOW PRINCE  
WULFS ARMADA 3303A  
TREF X-PRESSWAY 170X  
TREF WELL DONE 566W

ACT BW  
84

ADJ WW  
503

ADJ YW  
848

	CE	BW	WW	YW	MK	TM	CM	SC	DC	YG	CW	RE	MB	\$MTI
EPDS	12	.7	66	98	22	55	7	.82	12	-.57	33	1.27	-.34	42
%Rank	40	45	55	55	45	50	35	25	70	30	30	20	>95	90

Here are a couple heifers sired by our calving-ease specialist, TREF Hotshot. These two are clean-fronted heifers with a stylish look.



LOT  
**67A**



LOT  
**67B**

**67A**

## TREF KELSEY 812K ET

PUREBRED(96/88) COW · HOMO POLLED (T) · RED  
2/25/2022 · TREF 812K · NPF2522661

ROMN TOW TRUCK 111T  
**TREF ZEUS 232Z**  
TREF RED WINE 232R

TOMV YELLOWSTONE 153Y  
**TREF ALEXANDRIA 984A**  
TREF TINY GIRL 384T

WULFS RANSOM 3059R  
ROMN RITA 28R  
JBAK MONTANA 680M  
TREF PRECIOUS 302G

SYES USER FRIENDLY 524U  
MISS TOM 407P  
TREF RIFLE 906R  
TREF ROXIE 108R

ACT BW  
90

ADJ WW  
524

ADJ YW  
944

	CE	BW	WW	YW	MK	TM	CM	SC	DC	YG	CW	RE	MB	\$MTI
EPDS	12	-.4	55	79	28	55	8	.9	13	-.61	19	1.12	-.18	45
%Rank	40	25	90	85	10	50	25	20	60	15	75	50	60	80

**67B**

## TREF KIA 849K

PUREBRED(100/89.6) COW · DOUBLE POLLED · RED  
3/30/2022 · TREF 849K · NPF2493646

HUNT MR JOCK 44J  
**WULFS AMAZING BULL T341A**  
WULFS ULTRA DIAMOND 8571U

JYF ZEEK 151Z  
**TOMV MISS ZEEK 042H**  
TOMV MISS BUD ICE 731E

LVLV POLLED JUSTICE 0601E  
HUNT MISS GIGGLE 129G  
JLWM DIRE STRAYS 4109P  
WULFS NICHOLA 3279N

AHCC WOOD MOUNTAIN W796  
TMF MISS 627T  
DLVL BUD ICE 4112B  
MISS TOM 104Y

ACT BW  
85

ADJ WW  
593

ADJ YW  
1042

	CE	BW	WW	YW	MK	TM	CM	SC	DC	YG	CW	RE	MB	\$MTI
EPDS	12	.5	65	96	29	62	8	1.18	17	-.63	18	1.28	-.3	44
%Rank	40	40	60	60	5	15	25	10	10	15	80	20	95	85

Lot 67A is a hard-to-part-with ET daughter sired by TREF Zeus and out of one of our most maternal cows, TREF Alexandria. She has definite flush potential. Lot 67B is stacked with maternal genetics on both sides of her pedigree. She was raised by a first calf heifer and will make an outstanding high-percentage purebred Limousin cow. Both heifers will be a cornerstone purchase for Limousin producers searching for that starting female.

GE-EPDS



# OPEN YEARLING HEIFERS



**68A**

## TREF KITTY 830K

PUREBRED(96/89.1) COW · DOUBLE POLLED · RED  
3/17/2022 · TREF 830K · NPF2493710

GV X-MAN 343E  
**GV GRID IRON 862G**  
GV MS AMHERST 5517C

GV X-MAN 446Z  
GV MISS GENERAL 864U  
HUNT AMHERST 71A  
GV MISS TUFF ENUFF 9910W

**ACT BW**  
70

**ADJ WW**  
539

**ADJ YW**  
909

WULFS FIAT K683F ET  
**TREF HARTLEY 625H**  
TREF ZIPPY 810Z

HUNT CREDENTIALS 37C ET  
WULFS SOLOIST 6284S  
ROMN TOW TRUCK 111T  
TREF SCARLET 310G

	CE	BW	WW	YW	MK	TM	CM	SC	DC	YG	CW	RE	MB	\$MTI
EPDS	12	.4	63	85	25	57	7	.5	13	-.54	22	1.07	-1.5	48
%Rank	40	40	65	80	20	40	35	65	60	40	65	65	55	60

**68B**

## TREF KASSANDRA 846K

PUREBRED(100/89.9) COW · DOUBLE POLLED · RED  
3/23/2022 · TREF 846K · NPF2493698

GV X-MAN 343E  
**GV GRID IRON 862G**  
GV MS AMHERST 5517C

GV X-MAN 446Z  
GV MISS GENERAL 864U  
HUNT AMHERST 71A  
GV MISS TUFF ENUFF 9910W

**ACT BW**  
75

**ADJ WW**  
515

**ADJ YW**  
822

WULFS CAPER 3303C  
**TREF GLAMOUR GIRL 553G**  
TREF ABILENE 911A

KORC WULFS SNOW PRINCE  
WULFS ARMADA 3303A  
VL YES MAN 111Y  
TREF TONI 311T

	CE	BW	WW	YW	MK	TM	CM	SC	DC	YG	CW	RE	MB	\$MTI
EPDS	12	.4	68	94	22	56	8	.65	12	-.56	22	1.14	-3	44
%Rank	40	40	50	60	45	45	25	45	70	30	65	50	95	85

These two Grid Iron daughters are both out of first calf heifers. They are long and sleek, carry the right amount of muscle, and are burning with class. The Grid Iron offspring are some of our most docile.



**69A**

## TREF KENYA 839K

PERCENTAGE(85/77.5) COW · HOMO POLLED (P-1) · BLACK  
3/21/2022 · TREF 839K · NXF2493700

SYES USER FRIENDLY 524U  
**DLVL FEATHERLITE 8138F**  
DLVL MISS RIPTIDE 929W

WULFS RANSOM 3059R  
MISS SYES JUSTICE 224S  
RMKR RIPTIDE 515R  
TREF MISS 937N

**ACT BW**  
79

**ADJ WW**  
565

**ADJ YW**  
926

TREF COAL TRAIN 707C  
**TREF GLITTER 575G**  
TREF ZOEY 875Z

RPY PAYNES DERBY 46Z  
TREF YESTERDAY 707Y  
JBV LOMBARDI 911W  
TREF 475

	CE	BW	WW	YW	MK	TM	CM	SC	DC	YG	CW	RE	MB	\$MTI
EPDS	11	.9	56	82	25	54	4	.33	13	-.5	9	.93	-.24	42
%Rank	50	50	90	90	20	60	85	90	50	25	>95	45	95	>95

**69B**

## TREF KNOCKOUT 835K

PUREBRED(100/89.8) COW · HOMO POLLED (P-1) · BLACK  
3/19/2022 · TREF 835K · NPF2493704

SYES USER FRIENDLY 524U  
**DLVL FEATHERLITE 8138F**  
DLVL MISS RIPTIDE 929W

WULFS RANSOM 3059R  
MISS SYES JUSTICE 224S  
RMKR RIPTIDE 515R  
TREF MISS 937N

**ACT BW**  
77

**ADJ WW**  
585

**ADJ YW**  
888

WULFS AMAZING BULL T341A  
**TREF GRETA 597G**  
TREF ADDISON 997A

HUNT MR JOCK 44J  
WULFS ULTRA DIAMOND 8571U  
RICHMOND XANDER SRD 22X  
TREF X-QUISITE 634X

	CE	BW	WW	YW	MK	TM	CM	SC	DC	YG	CW	RE	MB	\$MTI
EPDS	12	.2	57	78	26	55	6	.65	13	-.58	8	1.06	-.33	40
%Rank	40	35	85	90	15	50	55	45	60	25	>95	65	95	>95

This is a pair of heifers that match up well. With Coal Train and Amazing Bull in their backgrounds, these black heifers will become exceptional milking cows with low birthweight EPDs.



# OPEN YEARLING HEIFERS



LOT  
**70A**



LOT  
**70B**

## 70A

### TREF KALISTA 821K

LIM-FLEX(71/66.7) COW · DOUBLE POLLED · RED  
3/12/2022 · TREF 821K · LFF2493722

GV AUSTIN 701A  
**TOMV DIESEL 619D**  
MISS TOM 118Y

TREF WARLORD 334W  
**TREF YOURS TRULY 739Y**

GV X-MAN 701X  
GV MISS LODESTAR 701T  
WULFS WAGON TRAIN 3197W  
MISS TOM 7106T

ROMN TOW TRUCK 111T  
TREF 334C

**ACT BW**  
71

**ADJ WW**  
470

**ADJ YW**  
736

	CE	BW	WW	YW	MK	TM	CM	SC	DC	YG	CW	RE	MB	\$MTI
EPDS	11	.8	61	95	26	56	9	.45	12	-.52	21	1.08	-.24	44
%Rank	50	50	90	85	10	55	10	95	65	2	90	10	>95	>95

## 70B

### TREF KELLY 844K

PUREBRED(100/91.2) COW · DOUBLE POLLED · RED  
3/22/2022 · TREF 844K · NPF2493690

B BAR BENTLEY 8D  
**TREF HOTSHOT 345H**  
TREF EMMA LOU 345E

TOMV DIESEL 619D  
**TREF GENECE 523G**  
TREF BREEZE 051B

IVY'S BUBBA WATSON HTZ24B  
B BAR WHISKEY GIRL  
TREF COAL TRAIN 707C  
TREF ABILENE 911A

GV AUSTIN 701A  
MISS TOM 118Y  
CF JIM DANDIE 216U  
TREF WHITE WINE 551W

**ACT BW**  
74

**ADJ WW**  
525

**ADJ YW**  
861

	CE	BW	WW	YW	MK	TM	CM	SC	DC	YG	CW	RE	MB	\$MTI
EPDS	14	.1	64	98	28	60	10	.47	13	-.59	35	1.36	-.29	44
%Rank	25	35	65	55	10	25	5	75	60	20	25	10	90	85

Deep and broody best describe Lot 70A. Her dam raised several sons that always sold near the top of our sales and her daughters stayed in the herd. This is one we are going to let go and believe she will do a world of good for the winning bidder. Lot 70B is another classy looking TREF Hotshot daughter out of a first calf heifer with Jim Dandie in her pedigree. Lots of maternal here.

*I first met Glenn at the first sale of his I went to in 2018. I chose to start my herd with Glenn's heifers because they were good quality and they have top-of-the-line genetics. After purchasing my first heifer in 2020, he was there to help when I had questions and was always patient with me. Now, I have been able to increase my herd with Glenn's genetics and strive to build a herd with quality as good as he has.*

Ben Roberts,  
Marengo, IA

## MILK AND MEAT

Yes you can have milk and meat both. The TREF bulls in this sale range in their Milk EPD from 22 to 31 which ranks them in the top 20% of the breed. Their average ribeye EPD of 1.26 ranks them in the top 8% of the breed.



**Can't make it  
to the sale?**

**NO  
PROBLEM.**

**DVAuction**  
Broadcasting Real-Time Auctions

**Bid live at DVAuction.com**

BID LIVE on the internet at DVAuction.com  
Register at DVAuction.com one day prior to the sale.



# TREFTZ LIMOUSIN



# TRETF

CELEBRATING  
**40**  
*Years*  
*In the Limousin breed*

Forty years ago in 1983, fresh out of college and back on the farm, I wanted something different. I purchased my first yearling Limousin bull, an Octagon Ruler son in the next county where a very large herd of “apricot” colored Limousin existed. I had no clue about these cattle or this operation. He was horned and unregistered and not like any bull I had ever seen before. As we pulled into the yard, I was in awe of all the golden colored cattle. As the breed was still somewhat in its infancy, I’m astonished

NOW how that herd of cattle was created so quickly. I was told several years later that the financier of that herd was the owner of Wells Lamont gloves who lived in Aberdeen at the time.

Of course, Limousin was known as an exotic breed, and with that young bull standing next to my dad’s Herefords and roans, exotic had a NEW meaning. It was almost like a different species of animal had strayed into our cattle yard with the stark difference between the breeds at the time. To say I was excited for that first calf crop to be born, is beyond description. My dad’s herd at the time was anything but consistent with a multitude of breeds and colors, including dairy cross—every farmer was milking cows in the day—yet very productive cows. What that first cross did on that set of calves that summer was as exciting as calving day. The colors were still very sporadic but the thing that was consistent was that big beautiful hind quarter. That marked the beginning of my passion.

I have never questioned or wavered from that decision I made 40 years ago. The cattle, not me, have allowed me to meet people around the world. That was a journey I would have never traveled had I not wondered into that neighbor’s yard in the next county as a 21 year old “kid”. The friendships established along the way have led to a very fulfilling life adventure. I thank all of you for sharing the ride with me.





# REFERENCE SIRES

	CE	BW	WW	YW	MK	TM	CM	SC	DC	YG	CW	RE	MB	\$MTI
<b>ANCHOR B GOLD RUSH 48G</b> <i>B BAR AUSTIN HEALY 4D ET x ANCHOR B BAILEY 21B</i>	5	4.4	100	142	29	79	4	1.3	22	-0.75	58	2.08	-0.61	44
<b>DLVL GUARDIAN 967G</b> <i>RUNL BRANCH 230 B x DLVL MISS WAGONTRAIN 2119</i>	16	-1.5	55	74	19	47	7	0.4	15	-0.60	27	1.26	-0.17	45
<b>GV GRID IRON 862G</b> <i>GV X-MAN 343E x GV MS AMHERST 5517C</i>	13	0.5	77	105	23	62	9	0.6	13	-0.55	22	1.20	-0.19	51
<b>SYES EASY GOING 77E</b> <i>COLE BUSINESSMAN 104B x MISS SYES RANSOM 76X</i>	20	-4.1	63	96	15	46	12	0.9	19	-0.56	24	1.29	-0.41	39
<b>TOMV DIESEL 619D</b> <i>GV AUSTIN 701A x MISS TOM 118Y</i>	7	4.2	90	146	28	74	9	0.0	19	-0.60	54	1.62	-0.30	52
<b>TREF COMMANDER 766C</b> <i>TREF ZENITH 570Z x TREF YAKIRA 766Y</i>	6	2.0	63	104	20	52	1	1.3	14	-0.58	29	1.11	-0.39	40
<b>TREF EZ STREET 107E</b> <i>WULFS CAPER 3303C x TREF COCOA BEAN 107C</i>	9	-0.1	76	108	28	66	5	0.8	18	-0.62	41	1.53	-0.15	52
<b>TREF GRAND SLAM 111G</b> <i>TREF COAL TRAIN 707C x TREF CHANEL 111C</i>	11	0.1	60	98	25	55	5	0.5	7	-0.54	33	1.34	-0.18	46
<b>TREF GUNPOWDER 290G</b> <i>SYES EASY GOING 77E x TREF DAKOTA LOVE 290D</i>	12	-1.5	60	92	19	49	7	0.8	17	-0.60	18	1.24	-0.27	43
<b>TREF HARDCORE 204H</b> <i>TOMV DIESEL 619D x TREF DELANEY 204D</i>	7	3.9	93	154	27	74	5	0.0	16	-0.60	50	1.57	-0.32	52
<b>TREF HOTSHOT 345H</b> <i>B BAR BENTLEY 8D x TREF EMMA LOU 345E</i>	20	-2.9	66	100	29	62	11	0.9	13	-0.53	43	1.38	-0.34	42
<b>TREF ZEUS 232Z</b> <i>ROMN TOW TRUCK 111T x TREF RED WINE 232R</i>	11	3.0	75	115	28	65	8	1.1	15	-0.61	36	1.27	-0.24	49



**ANCHOR B GOLD RUSH 48G**



**DLVL GUARDIAN 967G**



**GV GRID IRON 862G**



**SYES EASY GOING 77E**



**TOMV DIESEL 619D**



**TREF COMMANDER 766C**



**TREF EZ STREET 107E**



**TREF GRAND SLAM 111G**



**TREF GUNPOWDER 290G**



**TREF HARDCORE 204H**



**TREF HOTSHOT 345H**



**TREF ZEUS 232Z**







# TREFTZ LIMOUSIN







Marketing Management

2005 RUHL DRIVE  
GUTHRIE, OK 73044



T R E E F

CELEBRATING  
**40**  
*Years*

*In the Limousin breed*

**WHERE MUSCLE  
STILL MATTERS**  
**ANNUAL PRODUCTION SALE**

**FEBRUARY 11, 2023 • 1 P.M.**  
at the ranch in Wetonka, South Dakota