

**MC**  
Marketing Management  
648 West Sawgrass Trail  
Dakota Dunes, SD 57049

Additional information available at [www.WoodardLimousin.com](http://www.WoodardLimousin.com)

**ONLINE SALE PROVIDER**



**KILEY MCKINNA**

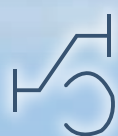
[www.mcmarketingmanagement.com](http://www.mcmarketingmanagement.com)

**SALE CONSULTANTS**

**MARK SMITH • 515.229.5227**  
**BILL HELTON • 256.962.0256**

**SALE-DAY PHONES**

**RODGER WOODARD • 719.439.2011**  
**KILEY MCKINNA • 402.350.3447**



**WOODARD**  
**LIMOUSIN**



**RODGER, PATTY & CASSIDY WOODARD**

33004 U.S. Hwy. 24 • Calhan, Colorado 80808  
(719) 541-2309 • Rodger cell: (719) 439-2011  
[www.woodardlimousin.com](http://www.woodardlimousin.com)

# WOODARD'S **IN THE ROCKIES** *Online Sale VI*

**FEBRUARY 20, 2018**

7 a.m. CST to 7 p.m. CST

[www.mcmarketingmanagement.com](http://www.mcmarketingmanagement.com)

**ELITE LIMOUSIN & LIM-FLEX GENETICS**  
**13 OPEN SHOW HEIFERS • 2 BREDS • 3 BULLS**



**LOT 3**  
**CYWD Eye Catching 41E**

4/20/17 • LF 50% • DP/DB • Open  
CYWD Continental Divide 4C x CYWD Undercover 33U  
BW: 75 • Adj. WW: 763  
CD: 12 BW: 0.1 WW: 74 YW: 103 MK: 21 CM: 5  
SC: 1.1 DC: 15 YG: -.05 CW: 32 RE: .53 MB: .14 \$MI: 58



**LOT 4**  
**CYWD Extravagant 38E**

4/10/17 • LF 59% • HP/B • Open  
CYWD Continental Divide 4C x CYWD Zaida 17Z  
BW: 80 • Adj. WW: 715  
CD: 10 BW: 0.8 WW: 62 YW: 92 MK: 27 CM: 5  
SC: 0.7 DC: 7 YG: -.18 CW: 26 RE: .72 MB: .00 \$MI: 50



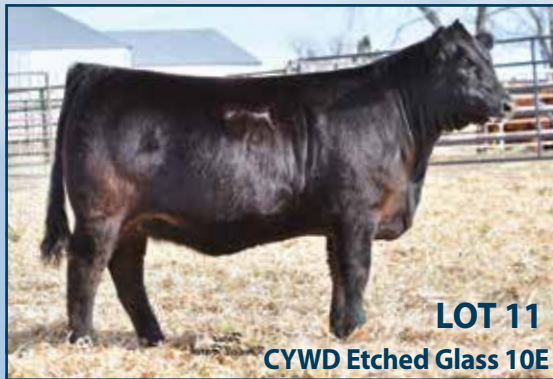
**LOT 5**  
**CYWD Exactly Right 28E**

3/24/17 • LF 65% • DP/DB • Open  
TMCK Architect 031A x CYWD Xeres 29X  
BW: 74 • Adj. WW: 687  
CD: 10 BW: -0.6 WW: 70 YW: 103 MK: 21 CM: 6  
SC: 0.9 DC: 11 YG: -.10 CW: 31 RE: .33 MB: .02 \$MI: 53



**LOT 9**  
**CYWD Exquisite 17E**

3/4/17 • LF 61% • DP/DB • Open  
TMCK Architect 031A x CYWD Angelica 32A  
BW: 65 • Adj. WW: 630  
CD: 10 BW: -1.7 WW: 61 YW: 99 MK: 23 CM: 5  
SC: 0.8 DC: 16 YG: -.23 CW: 28 RE: .71 MB: -.03 \$MI: 50



**LOT 11**  
**CYWD Etched Glass 10E**

2/25/17 • LF 65% • DP/DB • Open  
TMCK Architect 031A x CYWD Xoxox 12X  
BW: 80 • Adj. WW: 696  
CD: 7 BW: 1.1 WW: 74 YW: 108 MK: 22 CM: 4  
SC: 0.8 DC: 13 YG: -.29 CW: 35 RE: .84 MB: -.14 \$MI: 50



**LOT 15**  
**CYWD Diva 45D**

4/19/16 • LF 75% • DP/R • Bred  
CYWD X Games 2X x CYWD World Class 7W  
BW: 84 • Adj. WW: 725  
CD: 9 BW: 0.6 WW: 61 YW: 93 MK: 35 CM: 4  
SC: 0.7 DC: 9 YG: -.07 CW: 20 RE: .33 MB: .12 \$MI: 53

LOT NAME	CD	BW	WW	YW	MK	CM	SC	DC	YG	CW	RE	MB	\$MI
1 <b>CYWD EMMALEE 48E</b> 6/19/17 • LF 37% • DP/B • Open CYWD Continental Divide 4C x RRDC Abigate 143 A	12	0.2	69	105	21	4	-	-	-.07	33	.49	.13	56 BW: 78 • Adj. WW: 764
2 <b>CYWD ESPECIALLY NICE 45E</b> 5/9/17 • LF 75% • DP/DB • Open CYWD Continental Divide 4C x CYWD Wallflower 8W	7	2.5	66	98	26	4	0.6	7	-.04	32	.52	.05	52 BW: 84 • Adj. WW: 686
6 <b>CYWD EX-GIRLFRIEND 25E</b> 3/20/17 • LF (62/56) • DP/DB • Open CYWD Continental Divide 4C x CYWD Blossom 14B	13	0.4	62	100	25	6	0.8	17	-.23	30	.61	-.04	49 BW: 76 • Adj. WW: 659
7 <b>CYWD ENCORE 23E</b> 3/17/17 • LF (75/64.3) • HP/DB • Open AHCC Badlands 908B x CYWD Bel Air 33B	6	2.9	80	116	27	4	0.7	18	-.06	43	.29	.14	59 BW: 80 • Adj. WW: 776
8 <b>CYWD ETERNAL FLAME 21E</b> 3/12/17 • LF 50% • DP/R • Open CYWD X Games 2X x CYWD Yvonne 7Y	13	-0.8	50	84	32	5	0.9	10	-.11	18	.17	.14	51 BW: 80 • Adj. WW: 666
10 <b>CYWD ENVY 12E</b> 2/26/17 • PB • DP/DB • Open MAGS Unreal x CYWD Uncommon 12U	13	1.2	53	76	24	6	0.3	23	.10	17	-.04	.17	51 BW: 80 • Adj. WW: 618
12 <b>CYWD EVER AFTER 11E</b> 2/25/17 • LF 75% • DP/DB • Open AHCC Badlands 908B x CYWD Zsa Zsa 20Z	9	3.4	76	117	24	6	1.1	17	-.01	43	.07	.12	58 BW: 90 • Adj. WW: 731
13 <b>CYWD EXECUTIVE GIRL 8E</b> 2/23/17 • PB • HP/HB • Open AHCC Badlands 908B x CYWD Zolio 5Z	10	1.9	74	106	29	7	0.5	22	0.12	36	.01	0.04	53 BW: 78 • Adj. WW: 757
14 <b>CYWD EMBER 4E</b> 2/14/17 • LF 59% • DP/DB • Open MAGS Apple Jack x CYWD Cartier 30C	10	0.5	51	89	25	6	0.8	3	-.17	24	.52	.10	51 BW: 70 • Adj. WW: 601
17 <b>CYWD EXPEDITIOUS 37E</b> 4/10/17 • LF 62% • DP/DB • Bull CYWD Continental Divide 4C x CYWD Beverly Hills 16B	9	1.4	68	92	25	5	0.7	8	-.15	26	.66	.04	53 BW: 86 • Adj. WW: 848
19 <b>CYWD EXPLORER 9E</b> 2/24/17 • LF 75% • DP/DB • Bull TASF Believe 854B x CYWD Azalea 29A	6	2.6	68	100	21	4	1.0	9	-.03	32	.22	.09	54 BW: 88 • Adj. WW: 755



**LOT 16**  
**CYWD Divinity 25D**

3/8/16 • PC 77% • DP/DB • Bred  
TMCK Architect 031A x CYWD Azalea 29A  
BW: 78 • Adj. WW: 649  
CD: 8 BW: -0.1 WW: 67 YW: 90 MK: 25 CM: 5  
SC: 0.8 DC: 12 YG: -.10 CW: 19 RE: .36 MB: .07 \$MI: 53



**LOT 18**  
**CYWD Everest 24E**

3/18/17 • LF 75% • DP/R • Bull  
AHCC Cowboy Kind C595 ET x CYWD Yoshiko 16Y  
BW: 90 • Adj. WW: 788  
CD: 8 BW: 3.2 WW: 73 YW: 101 MK: 25 CM: 6  
DC: 16 YG: .07 CW: 31 RE: .05 MB: .10 \$MI: 55

**WOODARD'S**  
**IN THE ROCKIES**  
*Online Sale VI*