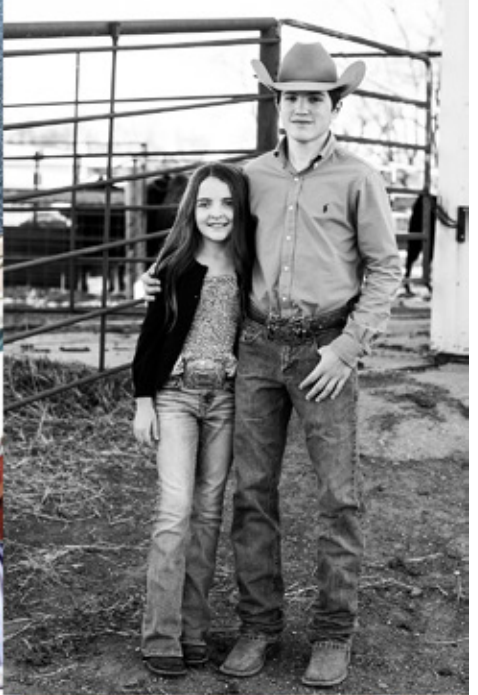




**45TH ANNUAL
PRODUCTION SALE**

APRIL 12, 2023





Greetings from the Peterson families,

After 45 production sales and over 53 years of being involved with Limousin, we've seen a lot of things happen to the breed and the beef industry. Some changes have been great and some you look back and would like a do-over! In the interest of keeping it positive, our family truly believes the Limousin breed and the Lim-Flex hybrid brings a lot of positives for what the beef industry needs.

Our breeding decisions are based on raising bulls for commercial operations. Many of you sell your calves off the cow, some background while others feed them all the way through to harvest. Some keep replacement females, others don't. As breeders we're mindful of everyone's position in the industry and realize the offspring from our bulls must be balanced in all areas. Easy calving, fast growing, heavy muscled cattle that consume the least amount of feed to produce a pound of quality product desired by the consumer is what we strive for. On the cow side, maternal efficiency and longevity is the Limousin breed's best kept secret. In times of drought, and scarce or high-priced feed we're reminded that conservation and making the most with what we have has never been more important.


If you're a repeat customer, we want to thank you for your business and loyalty! If you're considering us for the first time, we'd love to hear more about your operation and how an L7 Bar bull can help you "move the needle" in the trait areas you're trying to fix. Using Limousin & Lim-Flex genetics on your British based cowherd is the best way to make the most of your grass!

If you have any questions, feel free to contact Rod, Cade or any of the listed sale staff. Better yet, stop by the ranch prior to sale day!

We make delivery swings to central locations in South Dakota and surrounding states and will work with you to get your purchases to you as economically as possible. We offer a \$50 per head discount for cattle picked up sale day. Volume discounts start with a 5% discount on five to nine head and 10% discount on 10 head or more. If you plan to use a bull A.I., please let us know so we can pull DNA on the dam to meet NALF regulations. The cattle are fully guaranteed – buy with confidence!

Thanks again for the interest in our program. We look forward to hosting you April 12!

**One
Family**



**Committed
Program**

**...Built From the
Ground Up**





Limousin Production Sale
Wednesday, April 12, 2023 - 1 p.m.
at the ranch, Pukwana, SD

Selling 64 Lots
Yearling Bulls • Open Heifers
All Polled • Red & Black



Location: At the ranch

Sale Day Phone: Barn: 605-894-4470

Cell Numbers: Rod - 605-730-4470, Cade - 605-730-0705,
Chisum - 605-730-4214, or Quin - 918-625-2500



Sale Day Headquarters: Arrowwood Resort at Cedar Shore, Oacoma, SD. 605/234-6376

Sale Staff:

- C.K. Sonny Booth, Auctioneer 918/533-5587
- Mark Smith, Grassroots Genetics & Consulting 515/229-5227
- Kiley McKinna, MC Marketing 402/350-3447
- Wiley Fanta/MC Marketing 320/287-0751
- Donnie Leddy, Cattle Business Weekly 605/695-0113
- Merlyn Siegfried 605/868-9266
- Dean Summerbell, Heartland Limousin Ass'n 612/963-3799
- Justin Dikoff, DV Auction 605/290-0635

Complimentary Lunch at 11:30!

Please bring this catalog with you to the sale.



Volume Discount: 5% on 5 to 9 bulls • 10% on 10 head or more
Visit us at PetersonsL7Bar.com or on Facebook for sale updates, supplemental information and cattle videos.

Online bidding and videos available on DV Auction



Peterson's L7 Bar Limousin
Rod and Wendy Peterson & Family
34715 255th St.
Pukwana, SD 57370
email: cepeteron@midstatesd.net
petersonsL7bar.com

Directions to the ranch...

From Chamberlain Exit 265

- South 6 miles to 254th St., East on 254th St. for 1 mile then turn South for 1 mile, turn East on 255th St. for 2 1/4 miles, then head South down driveway.

From Pukwana Exit 272

- South 4.5 miles to 254th St., West on 254th St., 3 miles to 348th Ave., South 1 mile to 255th St., West 3/4 mile.

The cattle will be at the ranch south of Chamberlain. You are welcome to come and inspect the cattle anytime.



How to analyze our performance information . . .

BW - weight of calf at birth

All the births were scored to calving ease with:

- A - Unassisted
- B - Some Help
- C - Mechanical Pull
- D - Caesarean
- E - Abnormal Presentation

WW - weaning weight - This is the weaning weight of the cattle adjusted to 205 days of age. WW is a good indication of early growth of a calf and milking ability of the mother.

YW - yearling weight - This is the yearling weight of the animal adjusted to 365 days of age with at least 150 days between the actual weaning weight and the time of recording the actual yearling weight.

WDA - weight per day of age - This is a tool for you to use in your selection because rate of growth is heritable. However, WDA could have a direct relation to how hard the animals are fed, but it also gives you an idea about growth potential especially when compared to weaning and yearling weight.

SC - scrotal measurement - Measured in centimeters. By Doctor Erik Holum, scrotal measurements are actual, not adjusted.

Scan data on yearling bulls is adjusted to 365 days.

EPD'S were taken from NALF on March 9th, 2023.



~ Yearling Bulls ~

Lot 1

L7 2017K

PUREBRED, BULL (87/77.1)
HOMO POLLED (T)/RED
03/01/2022 LSBL 2017K NPM2521128

WULFS DEFEND K909D ET
WULFS HICKOK 7056H UREA: 18.72
WULFS EDWINNA 7056E UFAT: 0.25
WULFS XCELLSIOR X252X UIMF: 1.725
L7 CANDY CANE 512C
MISS L7 211Z

| BW: 92 | Adj WW: 764 | Adj YW: 1403 | | | | | | | | | |
|---------|-------------|--------------|-----|----|------|----|-------|----|------|-------|------|
| GE EPDs | CED | BW | WW | YW | MK | SC | DOC | YG | CW | REA | Marb |
| 8 | 4.5 | 84 | 129 | 24 | 0.84 | 15 | -0.48 | 26 | 1.13 | -0.04 | |

Another standout lot for this years sale from L7 Candy Cane. Her Homo Polled Hickok son is something to behold. A performance bull through and through. Ranks in top 3% for WW and YW. This long patterned, thick made, good structured, big topped dude scanned an 18.72 REA. Don't miss on the first Hickok progeny to sell here at the ranch. Retaining 1/3 interest



Lot 1

Lot 2

L7 2001K

PUREBRED, BULL (93/83.9)
HOMO POLLED (T)/HOMO BLACK (T)
02/26/2022 LSBL 2001K NPM2521121

AHCC BARN BURNER B907 UREA: 16.86
CELL ENVISION 7023E UFAT: 0.32
PBRs ZSA ZSA 246Z UIMF: 1.940
WULFS SPACE SHIP 3223S
MISS L7 110Y
MISS L7 139L

| BW: 92 | Adj WW: 828 | Adj YW: 1477 | | | | | | | | | |
|---------|-------------|--------------|-----|----|------|----|-------|----|------|-------|------|
| GE EPDs | CED | BW | WW | YW | MK | SC | DOC | YG | CW | REA | Marb |
| 7 | 3.8 | 83 | 134 | 24 | 1.82 | 11 | -0.56 | 43 | 1.53 | -0.10 | |

A true standout here in L7 2001K. His 12 year old Spaceship mother has back to back years as having Lot 2 in the sale. This Homo black, Homo Polled Envision son has been a standout since birth. He ranks top 20% or better in 8 traits, posted 828 at weaning and 1477 at yearling time. A real power bull here! Retaining 1/3 interest



Lot 2

Lot 3

L7 2012K

PUREBRED, BULL (100/85.4)
HOMO POLLED (T)/BLACK
03/23/2022 LSBL 2012K NPM2521451

CELL ENVISION 7023E UREA: 19.66
L7 HUMDINGER 0035H UFAT: 0.34
MISS L7 514C UIMF: 2.305
WULFS XCELLSIOR X252X
MISS L7 407B
MISS L7 086X

| BW: 92 | Adj WW: 767 | Adj YW: 1466 | | | | | | | | | |
|---------|-------------|--------------|-----|----|------|----|-------|----|------|-------|------|
| GE EPDs | CED | BW | WW | YW | MK | SC | DOC | YG | CW | REA | Marb |
| 7 | 2.3 | 78 | 131 | 21 | 0.90 | 16 | -0.59 | 43 | 1.55 | -0.12 | |

Sired by the sale topper in 2021, Humdinger. His progeny has not disappointed. This Homo Polled bull is top 3% for YW, 5% for CW, 2% for REA. A real scale tipper here. Scanned 19.66 REA



Lot 3

Lot
4

L7 2005K

LIM-FLEX, BULL (51/46.4)
HOMO POLLED (T)/HOMO BLACK (T)
02/26/2022 LSBL 2005K LFM2521120

MAGS AVIATOR
CJSL CREED 5042C UREA: 15.86
CJSL 2090Z UFAT: 0.46
DUFF BODY BUILDER 763 UIMF: 2.610
MISS L7 249Z
MISS L7 908W

| BW: 88 | Adj WW: 814 | Adj YW: 1438 | | | | | | | | | |
|---------|-------------|--------------|-----|----|-------|----|-------|----|------|------|------|
| GE EPDs | CED | BW | WW | YW | MK | SC | DOC | YG | CW | REA | Marb |
| 12 | -1.9 | 67 | 114 | 18 | -0.10 | 12 | -0.08 | 28 | 0.55 | 0.12 | |

A stout, bold made, high performing Creed son that's Homo Black and Homo Polled. A lot of bull here.



Lot
5

L7 2016K

PUREBRED, BULL (100/85.8)
HOMO POLLED (T)/BLACK
03/03/2022 LSBL 2016K NPM2521394

CELL ENVISION 7023E UREA: 16.26
L7 HUMDINGER 0035H UFAT: 0.39
MISS L7 514C UIMF: 2.105
WULFS XCELLSIOR X252X
MISS L7 502C
MISS L7 934W

| BW: 94 | Adj WW: 825 | Adj YW: 1514 | | | | | | | | | |
|---------|-------------|--------------|-----|----|------|----|-------|----|------|-------|------|
| GE EPDs | CED | BW | WW | YW | MK | SC | DOC | YG | CW | REA | Marb |
| 8 | 4.7 | 90 | 141 | 26 | 0.65 | 16 | -0.53 | 52 | 1.50 | -0.21 | |

A Homo Polled Humdinger son that boasts performance. Top 1% for WW, YW, and CW. Top 3% for REA. He mashed the scales at weaning and yearling. Don't miss on this powerful, deep bodied rascal.



Lot
6

L7 2020K

LIM-FLX, BULL (68/60.3)
HOMO POLLED (T)/HET BLACK (T)
02/22/2022 LSBL 2020K LFM2521109

AHCC BARN BURNER B907 UREA: 17.18
CELL ENVISION 7023E UFAT: 0.27
PBRZ ZSA ZSA 246Z UIMF: 2.940
L7 ALL THE ANSWERS 3056A
MISS L7 539C
MISS L7 342A

| BW: 78 | Adj WW: 741 | Adj YW: 1345 | | | | | | | | | |
|---------|-------------|--------------|-----|----|------|----|-------|----|------|------|------|
| GE EPDs | CED | BW | WW | YW | MK | SC | DOC | YG | CW | REA | Marb |
| 12 | -1.3 | 84 | 133 | 20 | 1.91 | 18 | -0.34 | 42 | 1.09 | 0.14 | |

Another solid made Envision son that's Homo Polled. Ranks top 10% for seven traits. Big REA bull out of a solid producing All the Answers cow.



Lot 7

L7 2030K

PUREBRED BULL (87/78.4)
HET POLLED (T)/RED
03/01/2022 LSBL 2030K NPM2521134

IVY'S MARKSMAN HTZ 10Z
IVY'S BUBBA WATSON HTZ24B UREA: 16.02
IVY'S UNIQUE PERFECTION 3U UFAT: 0.28
WULFS XCELLSIOR UIMF: 1.725
L7 DACOTAH MAID 615D X252X
MISS L7 057X

| BW: 92 | Adj WW: 776 | Adj YW: 1354 | | | | | | | | | |
|---------|-------------|--------------|-----|----|------|----|-------|----|------|-------|------|
| GE EPDs | CED | BW | WW | YW | MK | SC | DOC | YG | CW | REA | Marb |
| 10 | 2.3 | 76 | 115 | 20 | 0.14 | 13 | -0.53 | 45 | 1.33 | -0.27 | |

High performing Bubba son out of a big time Xcellsior cow. A lot to appreciate about this bull. Look him over.



Lot 8

L7 2024K

PUREBRED BULL (87/75.1)
HOMO POLLED (T)/HOMO BLACK (T)
03/21/2022 LSBL 2024K NPM2521449

CELL ENVISION 7023E
L7 HUMDINGER 0035H UREA: 15.52
MISS L7 514C UFAT: 0.34
L7 ALL THE ANSWERS 3056A UIMF: 1.895
MISS L7 567C
MISS L7 323A

| BW: 94 | Adj WW: 735 | Adj YW: 1283 | | | | | | | | | |
|---------|-------------|--------------|-----|----|------|----|-------|----|------|-------|------|
| GE EPDs | CED | BW | WW | YW | MK | SC | DOC | YG | CW | REA | Marb |
| 6 | 3.8 | 74 | 123 | 27 | 1.02 | 18 | -0.49 | 36 | 1.15 | -0.27 | |

A Homo Black, Homo Polled Humdinger that does a lot of things well. Out of a real good All the Answers cow.



Lot 9

L7 2036K

PUREBRED BULL (90/79.2)
HOMO POLLED (T)/BLACK
02/18/2022 LSBL 2036JK NPM2521100

MAGS ANCHOR
AHCC HEARTLAND 901F ET UREA: 14.50
LVLS 9066U UFAT: 0.33
IVY'S BUBBA WATSON HTZ24B UIMF: 2.800
MISS L7 717E
MISS L7 221Z

| BW: 68 | Adj WW: 680 | Adj YW: 1309 | | | | | | | | | |
|---------|-------------|--------------|----|----|------|----|-------|----|------|------|------|
| GE EPDs | CED | BW | WW | YW | MK | SC | DOC | YG | CW | REA | Marb |
| 18 | -2.1 | 63 | 99 | 19 | 0.60 | 16 | -0.30 | 44 | 0.89 | 0.11 | |

A big bodied, thick made, Homo Polled son of Heartland out of a real nice Bubba cow.



Lot 10

L7 2056K

PUREBRED, BULL (100/86.1)
HOMO POLLED (T)/BLACK
03/28/2022 LSBL 2056K NPM2522039

IVY'S BUBBA WATSON HTZ24B
L7 HIGH TIME 0022H UREA: 17.16
MISS L7 325A UFAT: 0.36
CELL ENVISION 7023E UIMF: 2.170
MISS L7 908G
MISS L7 086X

| BW: 88 | Adj WW: 747 | Adj YW: 1305 | | | | | | | | | | |
|---------|-------------|--------------|-----|----|------|----|-------|----|------|-------|------|--|
| GE EPDs | CED | BW | WW | YW | MK | SC | DOC | YG | CW | REA | Marb | |
| 8 | 2.8 | 79 | 119 | 21 | 0.97 | 11 | -0.62 | 36 | 1.46 | -0.15 | | |

Here is the first L7 High Time to sell. He was a sale highlight from the 2021 sale. Long bodied, chunky, big backed. All that stacked on a young Envision female going back to Chilipepper.



Lot 10

Lot 11

L7 2045K

PERCENTAGE, BULL (84/73.2)
HOMO POLLED (T)/HET BLACK (T)
02/21/2022 LSBL 2045K NXM2521106

MAGS ANCHOR
AHCC HEARTLAND 901F ET UREA: 13.96
LVLS 9066U UFAT: 0.29
L7 CALVADOS 5035C UIMF: 2.095
MISS L7 820F
MISS L7 538C

| BW: 80 | Adj WW: 691 | Adj YW: 1310 | | | | | | | | | | |
|---------|-------------|--------------|----|----|------|----|-------|----|------|-------|------|--|
| GE EPDs | CED | BW | WW | YW | MK | SC | DOC | YG | CW | REA | Marb | |
| 12 | -1.2 | 63 | 94 | 15 | 0.64 | 18 | -0.37 | 41 | 0.88 | -0.19 | | |

Deep sided, Homo Polled Heartland son out of a solid made Calvados female.



Lot 11

Lot 12

L7 2026K

LIM-FLEX, BULL (65/56.6)
HOMO POLLED (T)/HOMO BLACK (T)
02/22/2022 LSBL 2026K LFM2521110

MAGS ANCHOR
AHCC EARNING POWER 900E ET UREA: 15.88
LVLS 9066U UFAT: 0.34
SAV FINAL ANSWER 0035 UIMF: 1.880
MISS L7 577C
MISS L7 941W

| BW: 85 | Adj WW: 700 | Adj YW: 1314 | | | | | | | | | | |
|---------|-------------|--------------|-----|----|------|----|-------|----|------|------|------|--|
| GE EPDs | CED | BW | WW | YW | MK | SC | DOC | YG | CW | REA | Marb | |
| 12 | 1.5 | 78 | 122 | 16 | 2.05 | 14 | -0.17 | 29 | 0.48 | 0.09 | | |

Long, deep made, Homo Black, Homo Polled Earning Power son out of a Final Answer cow that never misses



Lot 12

Lot 13

L7 2078K

LIM-FLEX, BULL (72/65.3)
HOMO POLLED (T)/HOMO BLACK (T)
02/24/2022 LSBL 2078K LFM2521115

TMCK ARCHITECT 031A UREA: 16.52
TMCK DARTMOUTH 360D UFAT: 0.68
TMCK518Z UIMF: 3.030
L7 EXCHANGE RATE 7034E
MISS L7 051H
MISS L7 205Z

| BW: 75 | Adj WW: 772 | Adj YW: 1446 | | | | | | | | | | |
|---------|-------------|--------------|-----|----|------|----|-------|----|------|------|------|--|
| GE EPDs | CED | BW | WW | YW | MK | SC | DOC | YG | CW | REA | Marb | |
| 14 | 1.6 | 95 | 154 | 22 | 0.29 | 14 | -0.09 | 40 | 0.79 | 0.12 | | |

Homo Polled, Homo Black Dartmouth son that started small and grew like a weed during a drought! Big REA and high marbling bull. Find him sale day.



Lot 13

Lot 14

L7 2049K

PUREBRED, BULL (88/77.6)
HOMO POLLED (T)/RED
03/16/2022 LSBL 2049K NPM2521439

CJSL CREED 5042C UREA: 14.32
L7 0056H MISS L7 646D UFAT: 0.31
LFLC BANK ACCOUNT 701B UIMF: 2.190
MISS L7 830F
MISS L7 619D

| BW: 82 | Adj WW: 708 | Adj YW: 1261 | | | | | | | | | | |
|---------|-------------|--------------|----|----|-------|----|-------|----|------|-------|------|--|
| GE EPDs | CED | BW | WW | YW | MK | SC | DOC | YG | CW | REA | Marb | |
| 16 | -1.7 | 54 | 82 | 19 | -0.13 | 16 | -0.37 | 24 | 0.90 | -0.14 | | |

A good looking, deep sided, smooth made bull out of one of our herd bulls we call Haymaker.



Lot 14

Lot 15

L7 2068K

PERCENTAGE, BULL (82/73.9)
HOMO POLLED (T)/HOMO BLACK (T)
02/23/2022 LSBL 2068K NXM2521111

TMCK ARCHITECT 031A UREA: 17.30
TMCK DARTMOUTH 360D UFAT: 0.32
TMCK518Z UIMF: 2.115
DJ FLOYD
MISS L7 007H
MISS L7 621D

| BW: 62 | Adj WW: 715 | Adj YW: 1253 | | | | | | | | | | |
|---------|-------------|--------------|----|----|------|----|-------|----|------|-------|------|--|
| GE EPDs | CED | BW | WW | YW | MK | SC | DOC | YG | CW | REA | Marb | |
| 19 | -3.8 | 66 | 91 | 22 | 0.34 | 13 | -0.41 | 4 | 0.86 | -0.11 | | |

A calving ease bull that still offers performance in a Homo Black, Homo Polled package. Scanned a 17.3 REA



Lot 15

Lot 16**L7 2004K**

PUREBRED, BULL (100/90.2)
DOUBLE POLLED/RED
03/01/2022 LSBL 2004K NPM2521127

IVY'S MARKSMAN HTZ 10Z
WATSON HTZ24B
IVY'S UNIQUE PERFECTION 3U
L7 RED PEPPER 3001N
MISS L7 144Y
MISS L7 700T

UREA: 16.12
UFAT: 0.23
UIMF: 2.175

| BW: 92 | Adj WW: 786 | Adj YW: 1344 | | | | | | | | | |
|--------|-------------|--------------|-----|----|------|----|-------|----|------|-------|------|
| EPDs | CED | BW | WW | YW | MK | SC | DOC | YG | CW | REA | Marb |
| 11 | 2.0 | 70 | 102 | 23 | 0.10 | 13 | -0.64 | 30 | 1.39 | -0.37 | |

This Bubba son is a long, thick made brut! Out of one of the few remaining Red Pepper cows on the place.

Lot 17**L7 2007K**

PUREBRED, BULL (90/78.7)
DOUBLE POLLED/HET BLACK (T)
03/16/2022 LSBL 2007K NPM2521418

MAGS ANCHOR
AHCC EARNING POWER 900E ET
LVLS 9066U
WULFS WARBONNET 6254W
MISS L7 314A
MISS L7 608S

UREA: 16.42
UFAT: 0.38
UIMF: 2.490

| BW: 82 | Adj WW: 811 | Adj YW: 1374 | | | | | | | | | |
|--------|-------------|--------------|-----|----|------|----|-------|----|------|-------|------|
| EPDs | CED | BW | WW | YW | MK | SC | DOC | YG | CW | REA | Marb |
| 13 | 0.8 | 72 | 112 | 21 | 1.20 | 14 | -0.42 | 39 | 1.12 | -0.08 | |

High performing, long made Earning Power son out of a real good Warbonnet cow.

Lot 18**L7 2018K**

PUREBRED, BULL (90/77.8)
HOMO POLLED/HOMO BLACK
02/26/2022 LSBL 2018K NPM2521119

MAGS ANCHOR
AHCC EARNING POWER 900E ET
LVLS 9066U
WULFS YUKON TRAIL 8084Y
MISS L7 514C
MISS L7 523R

UREA: 15.26
UFAT: 0.42
UIMF: 1.890

| BW: 93 | Adj WW: 806 | Adj YW: 1359 | | | | | | | | | |
|--------|-------------|--------------|-----|----|------|----|-------|----|------|-------|------|
| EPDs | CED | BW | WW | YW | MK | SC | DOC | YG | CW | REA | Marb |
| 10 | 2.6 | 77 | 123 | 23 | 1.25 | 17 | -0.37 | 45 | 1.05 | -0.04 | |

Here is a maternal brother to L7 Humdinger out of Earning Power. Super stout and bold made. Over 800 at weaning and 1300 plus at yearling. A lot of good things offered in this lot.



L7 HUMDINGER/Maternal Brother to Lot 18

Lot 19**L7 2025K**

LIM-FLEX, BULL (68/60.8)
HET POLLED/HET BLACK
02/25/2022 LSBL 2025K LFM2521118

AHCC BARN BURNER B907
CELL ENVISION 7023E
PBRZ ZSA ZSA 246Z
DUFF STANDOUT 785
MISS L7 574C
MISS L7 700T

UREA: 15.34
UFAT: 0.25
UIMF: 2.455

| BW: 86 | Adj WW: 803 | Adj YW: 1251 | | | | | | | | | |
|--------|-------------|--------------|-----|----|------|----|-------|----|------|-------|------|
| EPDs | CED | BW | WW | YW | MK | SC | DOC | YG | CW | REA | Marb |
| 10 | 1.5 | 80 | 119 | 22 | 1.43 | 16 | -0.39 | 37 | 1.09 | 0.000 | |

Big numbered, solid made Envision son out of an excellent Standout female.

Lot 20**L7 2043K**

LIM-FLEX, BULL (75/66.5)
DOUBLE POLLED/HOMO BLACK
04/10/2022 LSBL 2043K LFM2521490

CJSL CREED 5042C
L7 0056H
MISS L7 646D
L7 CALVADOS 5035C
MISS L7 815F
MISS L7 557C

UREA: 16.22
UFAT: 0.38
UIMF: 3.015

| BW: 80 | Adj WW: 828 | Adj YW: 1417 | | | | | | | | | |
|--------|-------------|--------------|----|----|------|----|-------|----|------|------|------|
| EPDs | CED | BW | WW | YW | MK | SC | DOC | YG | CW | REA | Marb |
| 17 | -1.8 | 66 | 98 | 20 | 0.02 | 12 | -0.37 | 26 | 1.00 | 0.19 | |

The spread from birth to yearling is impressive in this Haymaker son. Ratioed 104 for REA and 126 for IMF. Out of a beautiful Calvados cow.

Lot 21**L7 2059K**

LIM-FLEX, BULL (67/59.6)
HOMO POLLED/HOMO BLACK
03/17/2022 LSBL 2059K LFM2521417

MAGS AVIATOR
CJSL CREED 5042C
CJSL 2090Z
COLE CADILLAC 05C
MISS L7 924G
MISS L7 761E

UREA: 16.74
UFAT: 0.36
UIMF: 2.535

| BW: 82 | Adj WW: 722 | Adj YW: 1300 | | | | | | | | | |
|--------|-------------|--------------|-----|----|-------|----|-------|----|------|------|------|
| EPDs | CED | BW | WW | YW | MK | SC | DOC | YG | CW | REA | Marb |
| 13 | 0.2 | 66 | 107 | 13 | -0.42 | 10 | -0.23 | 23 | 0.88 | 0.30 | |

Real nice Creed son here. Trait leader in several categories. Big Ribeye bull that marbled real well.

Lot 22**L7 2077K**

LIM-FLEX, BULL (59/53.0)
DOUBLE POLLED/BLACK
03/01/2022 LSBL 2077K LFM2521135

COLE CADILLAC 05C
L7 0079H
MISS L7 779E
PRAIRIE PRIDE NEXT STEP 2036
MISS L7 046H
MISS L7 857F

UREA: 14.82
UFAT: 0.24
UIMF: 2.125

| BW: 90 | Adj WW: 743 | Adj YW: 1332 | | | | | | | | | |
|--------|-------------|--------------|-----|----|----|----|-------|----|------|------|------|
| EPDs | CED | BW | WW | YW | MK | SC | DOC | YG | CW | REA | Marb |
| 8 | 2.5 | 68 | 107 | 18 | | 10 | -0.25 | 41 | 0.80 | 0.02 | |

A moderate, deep sided, chunk here. His sire, L7 Hold Card has done some nice things around here.

Lot 23**L7 2080K**

LIM-FLEX, BULL (62/56.0)
DOUBLE POLLED/HET BLACK
03/20/2022 LSBL 2080K LFM2521448

L7 0079H COLE CADILLAC 05C UREA: 15.70
MISS L7 779E UFAT: 0.27
L7 FLASH 8063F UIMF: 2.440
MISS L7 074H MISS L7 801F

| BW: 90 | Adj WW: 719 | Adj YW: 1338 | | | | | | | | | |
|--------|-------------|--------------|-----|----|----|----|-------|----|------|-------|------|
| EPDs | CED | BW | WW | YW | MK | SC | DOC | YG | CW | REA | Marb |
| 12 | 2.5 | 66 | 102 | 19 | | 14 | -0.33 | 30 | 0.82 | -0.02 | |

A real Rancher's delight. Long made, deep bodied, good structured, performance bull. Real nice Hold Card son here.

Lot 24**L7 2003K**

PUREBRED, BULL (88/77.5)
DOUBLE POLLED/DOUBLE BLACK
04/10/2022 LSBL 2003K NPM2521494

L7 0056H CJSJ CREED 5042C UREA: 16.02
MISS L7 646D UFAT: 0.26
WULFS TITUS 2149T UIMF: 2.145
MISS L7 130Y MISS L7 841U

| BW: 82 | Adj WW: 722 | Adj YW: 1326 | | | | | | | | | |
|--------|-------------|--------------|----|----|------|----|-------|----|------|-------|------|
| EPDs | CED | BW | WW | YW | MK | SC | DOC | YG | CW | REA | Marb |
| 15 | -1.1 | 56 | 87 | 20 | 0.03 | 12 | -0.50 | 20 | 1.05 | -0.06 | |

Heavy at weaning and yearling time. A big topped Haymaker son out of a high producing Titus cow.

Lot 25**L7 2058K**

LIM-FLEX, BULL (75/63.9)
DOUBLE POLLED/DOUBLE BLACK
04/08/2022 LSBL 2058K LFM2521483

L7 EZ RIDER 7082E ET UREA: 17.98
MISS L7 922G PVF INSIGHT 0129 UFAT: 0.25
L7 YUMA 122Y UIMF: 2.115
COLE CADILLAC 05C
MISS L7 700E

| BW: 82 | Adj WW: 740 | Adj YW: 1329 | | | | | | | | | |
|--------|-------------|--------------|----|----|------|----|-------|----|------|-------|------|
| EPDs | CED | BW | WW | YW | MK | SC | DOC | YG | CW | REA | Marb |
| 10 | 1.0 | 64 | 96 | 18 | 0.24 | 11 | -0.53 | 18 | 1.27 | -0.07 | |

Top 1% for YG and 2% for REA. His young Cadillac mother raised a real nice performance bull here.

Lot 26**L7 2075K**

LIM-FLEX, BULL (65/58.2)
DOUBLE POLLED/BLACK
03/15/2022 LSBL 2075K LFM2521409

L7 0079H COLE CADILLAC 05C UREA: 14.60
MISS L7 043H MISS L7 779E UFAT: 0.48
VIN-MAR O'REILLY FACTOR UIMF: 2.505
MISS L7 851F

| BW: 78 | Adj WW: 801 | Adj YW: 1364 | | | | | | | | | |
|--------|-------------|--------------|----|----|------|----|-------|----|------|------|------|
| EPDs | CED | BW | WW | YW | MK | SC | DOC | YG | CW | REA | Marb |
| 12 | 0.6 | 64 | 97 | 21 | 0.30 | 13 | -0.21 | 36 | 0.72 | 0.04 | |

Chunky, deep made Hold Card son that posted an 800 pound WW.

Lot 27**L7 2029K**

PUREBRED, BULL (100/90.0)
HET POLLED (T)/RED
03/16/2022 LSBL 2029K NPM2521436

IVY'S BUBBA WATSON HTZ24B UREA: 18.12
MISS L7 607D IVY'S MARKSMAN HTZ 10Z UFAT: 0.27
WULFS XCELLSIOR X252X UIMF: 1.790
MISS L7 714T

| BW: 84 | Adj WW: 726 | Adj YW: 1264 | | | | | | | | | |
|---------|-------------|--------------|----|----|------|----|-------|----|------|-------|------|
| GE EPDs | CED | BW | WW | YW | MK | SC | DOC | YG | CW | REA | Marb |
| 15 | -0.3 | 61 | 87 | 23 | 0.03 | 11 | -0.77 | 11 | 1.58 | -0.28 | |

The Bubba Watson and Xcellsior cross is still hitting home runs. Long spined, and big backed. He scanned 18.12 REA

**Lot 28****L7 2013K**

PERCENTAGE, BULL (76/68.7)
HET POLLED/HOMO BLACK
03/15/2022 LSBL 2013K NXM2521411

CJSJ CREED 5042C UREA: 14.60
MISS L7 419B CJSJ 2090Z UFAT: 0.42
WULFS YUKON TRAIL 8084Y UIMF: 2.435
MISS L7 038X

| BW: 80 | Adj WW: 670 | Adj YW: 1279 | | | | | | | | | |
|--------|-------------|--------------|-----|----|-------|----|-------|----|------|------|------|
| EPDs | CED | BW | WW | YW | MK | SC | DOC | YG | CW | REA | Marb |
| 14 | -0.2 | 59 | 102 | 19 | -0.19 | 11 | -0.25 | 33 | 0.84 | 0.06 | |

A beef bull out of Creed and a consistent Yukon Trail cow.

Lot 29**L7 2015K**

LIM-FLEX, BULL (75/66.9)
HOMO POLLED/HET BLACK
04/10/2022 LSBL 2015K LFM2521491

L7 0056H CJSJ CREED 5042C UREA: 15.32
MISS L7 442B MISS L7 646D UFAT: 0.27
L7 1017Y UIMF: 2.725
MISS L7 977W

| BW: 86 | Adj WW: 721 | Adj YW: 1289 | | | | | | | | | |
|--------|-------------|--------------|----|----|------|----|-------|----|------|------|------|
| EPDs | CED | BW | WW | YW | MK | SC | DOC | YG | CW | REA | Marb |
| 14 | 0.0 | 55 | 84 | 18 | 0.20 | 12 | -0.31 | 24 | 0.79 | 0.13 | |

Moderate, thick made Haymaker son.

Lot 30**L7 2019K**

PUREBRED, BULL (100/85.7)
 HET BLACK/HET POLLED
 03/02/2022 LSBL 2019K NPM2521133

CELL ENVISION 7023E UREA: 15.44
 L7 HUMDINGER 0035H UFAT: 0.38
 MISS L7 514C
 MAG UNREAL UIMF: 2.320
 MISS L7 533C
 MISS L7 278Z

| BW: 86 | Adj WW: 710 | Adj YW: 1253 | | | | | | | | | | |
|--------|-------------|--------------|-----|----|------|----|-------|----|------|-------|------|--|
| EPDs | CED | BW | WW | YW | MK | SC | DOC | YG | CW | REA | Marb | |
| 12 | 1.3 | 69 | 108 | 22 | 0.72 | 18 | -0.41 | 31 | 1.10 | -0.06 | | |

Another solid made Humdinger son. Out of an Unreal female that's raised some good ones.

Lot 31**L7 2032K**

PUREBRED, BULL (100/84.6)
 DOUBLE POLLED/BLACK
 03/05/2022 LSBL 2032K NPM2521397

CELL ENVISION 7023E UREA: 16.00
 L7 HUMDINGER 0035H UFAT: 0.24
 MISS L7 514C
 WULFS XCELLSIOR X252X UIMF: 1.925
 MISS L7 621D
 MISS L7 211Z

| BW: 90 | Adj WW: 639 | Adj YW: 1253 | | | | | | | | | | |
|--------|-------------|--------------|-----|----|------|----|-------|----|------|-------|------|--|
| EPDs | CED | BW | WW | YW | MK | SC | DOC | YG | CW | REA | Marb | |
| 9 | 1.2 | 70 | 112 | 18 | 0.71 | 16 | -0.58 | 31 | 1.33 | -0.20 | | |

The Humdinger keep coming. Another solid made son out of a full sister to Candy Cane.

Lot 32**L7 2084K**

LIM-FLEX, BULL (65/58.4)
 DOUBLE POLLED/RED
 04/03/2022 LSBL 2084K LFM2521472

COLE CADILLAC 05C UREA: 13.58
 L7 0079H MISS L7 779E UFAT: 0.44
 L7 FLASH 8063F
 MISS L7 086H UIMF: 2.520
 MISS L7 861F

| BW: 82 | Adj WW: 790 | Adj YW: 1373 | | | | | | | | | | |
|--------|-------------|--------------|-----|----|----|----|-------|----|------|------|------|--|
| EPDs | CED | BW | WW | YW | MK | SC | DOC | YG | CW | REA | Marb | |
| 12 | 1.7 | 66 | 100 | 22 | | 14 | -0.18 | 38 | 0.66 | 0.03 | | |

A stout, moderate made red bull out of Hold Card with plenty of performance.

Lot 33**L7 2040K**

LIM-FLEX, BULL (69/61.1)
 HOMO POLLED/HET BLACK
 04/11/2022 LSBL 2040K LFM2521496

CJSL CREED 5042C UREA: 12.84
 L7 0056H MISS L7 646D UFAT: 0.48
 L7 ALL THE ANSWERS 3056A
 MISS L7 767E UIMF: 3.300
 MISS L7 559C

| BW: 78 | Adj WW: 822 | Adj YW: 1229 | | | | | | | | | | |
|--------|-------------|--------------|----|----|------|----|-------|----|------|------|------|--|
| EPDs | CED | BW | WW | YW | MK | SC | DOC | YG | CW | REA | Marb | |
| 17 | -2.3 | 54 | 74 | 22 | 0.43 | 12 | -0.20 | 21 | 0.55 | 0.19 | | |

Big middled, thick, moderate, calving ease bull out of Haymaker.

Lot 34**L7 2042K**

PUREBRED, BULL (93/80.1)
 HOMO POLLED/HET BLACK
 03/26/2022 LSBL 2042K NPM2521454

CELL ENVISION 7023E UREA: 16.42
 L7 GUNPOWDER 9037G UFAT: 0.27
 MISS L7 011X
 L7 CALVADOS 5035C UIMF: 2.280
 MISS L7 814F
 MISS L7 330A

| BW: 88 | Adj WW: 706 | Adj YW: 1289 | | | | | | | | | | |
|--------|-------------|--------------|-----|----|------|----|-------|----|------|-------|------|--|
| EPDs | CED | BW | WW | YW | MK | SC | DOC | YG | CW | REA | Marb | |
| 8 | 2.6 | 68 | 102 | 17 | 1.13 | 12 | -0.48 | 23 | 1.11 | -0.05 | | |

Long made, big REA Gunpowder son.

Lot 35**L7 2054K**

LIM-FLEX, BULL (70/63.6)
 HOMO POLLED/HOMO BLACK
 03/17/2022 LSBL 2054K LFM2521441

MAGS AVIATOR UREA: 13.34
 CJSL CREED 5042C UFAT: 0.49
 CJSL 2090Z
 TMCK DARTMOUTH 360D UIMF: 3.055
 MISS L7 906G
 MISS L7 133Y

| BW: 65 | Adj WW: 713 | Adj YW: 1256 | | | | | | | | | | |
|--------|-------------|--------------|----|----|-------|----|-------|----|------|------|------|--|
| EPDs | CED | BW | WW | YW | MK | SC | DOC | YG | CW | REA | Marb | |
| 17 | -3.2 | 58 | 94 | 19 | -0.21 | 12 | -0.09 | 27 | 0.53 | 0.27 | | |

This Creed son was small at birth and grew good on his young Dartmouth mother.

Lot 36**L7 2021K**

LIM-FLEX, BULL (75/67.7)
 HET POLLED (T)/BLACK
 03/05/2022 LSBL 2021K LFM2527130

IVY'S BUBBA WATSON HTZ24B UREA: 14.60
 L7 HIGH TIME 0022H UFAT: 0.30
 MISS L7 325A
 S A V BRILLIANCE 8077 UIMF: 2.885
 L7 CHIQUITA 551C
 MISS L7 339A

| BW: 100 | Adj WW: 702 | Adj YW: 1280 | | | | | | | | | | |
|---------|-------------|--------------|-----|----|------|----|-------|----|------|------|------|--|
| EPDs | CED | BW | WW | YW | MK | SC | DOC | YG | CW | REA | Marb | |
| 10 | 1.1 | 66 | 105 | 21 | 0.57 | 11 | -0.36 | 9 | 0.84 | 0.10 | | |

Long, thick made, high performing High Time son.

**Lot 36**

Lot
37

L7 K BAR 2067K

LIM-FLEX, BULL (69/62.4)
HOMO POLLED P-2)/DOUBLE BLACK
03/25/2022 RLPR 2067K LFM2519499

TMCK DARTMOUTH 360D
L7 GRIFFIN 9018G UREA: 18.60
MISS L7 325A UFAT: 0.37
CONLEY EXPRESS 7211
L7 HALF PINT 012H ET UIMF: 2.345
L7 YUMA 122Y

| BW: 78 | Adj WW: 799 | Adj YW: 1327 | | | | | | | | | |
|--------|-------------|--------------|----|----|----|------|-----|-------|----|------|------|
| EPDs | CED | BW | WW | YW | MK | SC | DOC | YG | CW | REA | Marb |
| | 10 | 0.7 | 66 | 97 | 22 | 0.37 | 12 | -0.35 | 15 | 0.80 | 0.02 |

Moderate, chunky, big topped describe this one. This Homo Polled son of Griffin scanned an 18.60 REA.



Lot 37

Lot
38

L7 2085K

PUREBRED, BULL (90/81.0)
DOUBLE POLLED/RED
03/28/2022 LSBL 2085K NPM2521462

COLE CADILLAC 05C
L7 0079H UREA: 14.26
MISS L7 779E UFAT: 0.29
L7 EIGHT BALL 7036E
MISS L7 087H UIMF: 2.130
MISS L7 221Z

| BW: 80 | Adj WW: 717 | Adj YW: 1240 | | | | | | | | | |
|--------|-------------|--------------|----|----|----|-------|-----|-------|----|------|-------|
| EPDs | CED | BW | WW | YW | MK | SC | DOC | YG | CW | REA | Marb |
| | 12 | 1.1 | 56 | 80 | 19 | -0.14 | 8 | -0.39 | 25 | 0.90 | -0.18 |

Stout, deep sided Hold Card son going back to a productive Red Pepper cow.

Lot
39

L7 2079K

LIM-FLEX, BULL (71/63.3)
DOUBLE POLLED/RED
03/15/2022 LSBL 2079K LFM2521407

COLE CADILLAC 05C
L7 0079H UREA: 14.40
MISS L7 779E UFAT: 0.30
L7 EXCHANGE RATE 7034E
MISS L7 054H UIMF: 2.915
MISS L7 249Z

| BW: 75 | Adj WW: 665 | Adj YW: 1228 | | | | | | | | | |
|--------|-------------|--------------|----|----|----|------|-----|-------|----|------|-------|
| EPDs | CED | BW | WW | YW | MK | SC | DOC | YG | CW | REA | Marb |
| | 12 | 0.2 | 57 | 89 | 20 | 0.02 | 14 | -0.28 | 27 | 0.78 | -0.02 |

Real nice dark red bull out of Hold Card and a beautiful Exchange Rate cow.

Lot
40

L7 2055K

PUREBRED, BULL (94/81.3)
HOMO POLLED/HET BLACK
03/18/2022 LSBL 2055K NPM2521444

WZRK ATLAS 8012A
L7 EARNED RUN 7084E ET UREA: 14.36
AUTO PIA 245X UFAT: 0.27
TMCK DARTMOUTH 360D
MISS L7 907G UIMF: 2.810
MISS L7 523C

| BW: 82 | Adj WW: 731 | Adj YW: 1284 | | | | | | | | | |
|--------|-------------|--------------|----|-----|----|------|-----|-------|----|------|-------|
| EPDs | CED | BW | WW | YW | MK | SC | DOC | YG | CW | REA | Marb |
| | 11 | 2.1 | 73 | 108 | 23 | 0.41 | 13 | -0.43 | 28 | 0.91 | -0.07 |

Solid made Earned Run son that is top 30% for WW, YW, and Marbling.

Lot
41

L7 2041K

LIM-FLEX, BULL (75/66.4)
HOMO POLLED/HET BLACK
03/19/2022 LSBL 2041K LFM2521446

CJSL CREED 5042C
L7 0056H UREA: 15.58
MISS L7 646D UFAT: 0.38
LFLC DENVER 857D
MISS L7 812F UIMF: 2.795
MISS L7 353A

| BW: 82 | Adj WW: 702 | Adj YW: 1225 | | | | | | | | | |
|--------|-------------|--------------|----|----|----|------|-----|-------|----|------|------|
| EPDs | CED | BW | WW | YW | MK | SC | DOC | YG | CW | REA | Marb |
| | 15 | -0.9 | 60 | 91 | 19 | 0.33 | 13 | -0.38 | 23 | 0.91 | 0.04 |

Nice Haymaker son that is top 20% for REA and ratioed a 117 for Marbling.

Lot
42

L7 2065K

PERCENTAGE, BULL (77/69.8)
HOMO POLLED/HET BLACK
03/04/2022 LSBL 2065K NXM2521396

TMCK ARCHITECT 031A
TMCK DARTMOUTH 360D UREA: 14.98
TMCK518Z UFAT: 0.35
CJSL CREED 5042C
MISS L7 009H UIMF: 1.940
MISS L7 114Y

| BW: 68 | Adj WW: 688 | Adj YW: 1241 | | | | | | | | | |
|--------|-------------|--------------|----|-----|----|------|-----|-------|----|------|------|
| EPDs | CED | BW | WW | YW | MK | SC | DOC | YG | CW | REA | Marb |
| | 14 | -1.1 | 67 | 104 | 23 | 0.09 | 13 | -0.27 | 24 | 0.78 | 0.01 |

A growthy, calving ease bull.

Lot
43

L7 2069K

PUREBRED, BULL (90/77.2)
DOUBLE POLLED/BLACK
04/04/2022 LSBL 2069K NPM2521474

COLE CADILLAC 05C
L7 0079H UREA: 13.90
MISS L7 779E UFAT: 0.59
CELL ENVISION 7023E
MISS L7 019H UIMF: 3.155
MISS L7 421B

| BW: 82 | Adj WW: 741 | Adj YW: 1345 | | | | | | | | | |
|--------|-------------|--------------|----|-----|----|------|-----|-------|----|------|-------|
| EPDs | CED | BW | WW | YW | MK | SC | DOC | YG | CW | REA | Marb |
| | 11 | 1.7 | 67 | 104 | 21 | 0.45 | 13 | -0.29 | 44 | 0.95 | -0.03 |

Stout son of Hold Card that weighed off good at weaning and yearling time and ratios a 132 for IMF.

Lot
44

L7 2023K

PUREBRED, BULL (88/77.6)
DOUBLE POLLED/RED
04/15/2022 LSBL 2023K NPM2521504

L7 0056H CJSL CREED 5042C UREA: 15.92
MISS L7 560C MISS L7 646D UFAT: 0.43
CJSL WINDFALL 9072W UIMF: 1.970
MISS L7 908W

| BW: 70 | Adj WW: 749 | Adj YW: 1247 | | | | | | | | | | |
|--------|-------------|--------------|----|----|------|----|-------|----|------|-------|------|--|
| EPDs | CED | BW | WW | YW | MK | SC | DOC | YG | CW | REA | Marb | |
| 18 | 3.0 | 52 | 76 | 23 | 0.02 | 14 | -0.44 | 15 | 1.02 | -0.03 | | |

A smooth, long spined son of Haymaker that's easy to look at.

Lot
45

L7 2076K

LIM-FLEX, BULL (63/57.6)
DOUBLE POLLED/DOUBLE BLACK
03/03/2022 LSBL 2076K LFM2521393

TMCK ARCHITECT 031A UREA: 15.36
TMCK DARTMOUTH 360D UFAT: 0.29
TMCK518ZA PRAIRIE PRIDE NEXT STEP 2036 UIMF: 1.905
MISS L7 044H MISS L7 823F

| BW: 60 | Adj WW: 708 | Adj YW: 1281 | | | | | | | | | | |
|--------|-------------|--------------|-----|----|----|----|-------|----|------|-------|------|--|
| EPDs | CED | BW | WW | YW | MK | SC | DOC | YG | CW | REA | Marb | |
| 16 | -2.3 | 70 | 110 | 22 | | 14 | -0.29 | 32 | 0.83 | -0.08 | | |

Calving ease is stacked in this Pedigree. Weaned over 700 and nearly did 1300 at yearling.

Lot
46

L7 2035K

PUREBRED, BULL (87/78.7)
DOUBLE POLLED/BLACK
04/08/2022 LSBL 2035K NPM2521484

L7 EIGHT BALL 7036E UREA: 15.48
MISS L7 330A UFAT: 0.42
L7 ALL THE ANSWERS 3056A UIMF: 2.345
MISS L7 658D MISS L7 404B

| BW: 78 | Adj WW: 703 | Adj YW: 1231 | | | | | | | | | | |
|--------|-------------|--------------|----|----|------|----|-------|----|------|-------|------|--|
| EPDs | CED | BW | WW | YW | MK | SC | DOC | YG | CW | REA | Marb | |
| 15 | -0.5 | 57 | 77 | 20 | 0.53 | 8 | -0.47 | 11 | 0.99 | -0.21 | | |

A lot of nice pieces to this Eight Ball son.

Lot
47

L7 2086K

PERCENTAGE, BULL (83/74.2)
DOUBLE POLLED/RED
04/09/2022 LSBL 2086K NXM22521487

L7 0079H COLE CADILLAC 05C UREA: 15.50
MISS L7 779E UFAT: 0.31
L7 EXCHANGE RATE 7034E UIMF: 2.770
MISS L7 055H MISS L7 407B

| BW: 72 | Adj WW: 699 | Adj YW: 1272 | | | | | | | | | | |
|--------|-------------|--------------|----|----|------|----|-------|----|------|------|------|--|
| EPDs | CED | BW | WW | YW | MK | SC | DOC | YG | CW | REA | Marb | |
| 12 | -0.1 | 58 | 92 | 20 | 0.11 | 14 | -0.36 | 26 | 0.93 | 0.00 | | |

Big topped calving ease Hold Card son.

Lot
48

L7 2083K

PERCENTAGE, BULL (78/69.3)
DOUBLE POLLED/RED
04/03/2022 LSBL 2083K NXM2521473

L7 0079H COLE CADILLAC 05C UREA: 15.18
MISS L7 779E UFAT: 0.39
L7 FLASH 8063F UIMF: 2.290
MISS L7 083H MISS L7 840F

| BW: 78 | Adj WW: 732 | Adj YW: 1270 | | | | | | | | | | |
|--------|-------------|--------------|----|----|----|----|-------|----|------|-------|------|--|
| EPDs | CED | BW | WW | YW | MK | SC | DOC | YG | CW | REA | Marb | |
| 12 | 1.1 | 61 | 89 | 19 | | 11 | -0.35 | 23 | 0.82 | -0.06 | | |

These red Hold Card sons are really consistent in their looks and performance.

Lot
49

L7 2082K

PERCENTAGE, BULL (78/69.5)
DOUBLE POLLED/BLACK
03/26/2022 LSBL 2082K NXM2521456

L7 0079H COLE CADILLAC 05C UREA: 14.92
MISS L7 779E UFAT: 0.39
L7 FLASH 8063F UIMF: 2.170
MISS L7 081H MISS L7 830F

| BW: 86 | Adj WW: 744 | Adj YW: 1222 | | | | | | | | | | |
|--------|-------------|--------------|----|----|----|----|-------|----|------|-------|------|--|
| EPDs | CED | BW | WW | YW | MK | SC | DOC | YG | CW | REA | Marb | |
| 12 | 1.5 | 59 | 83 | 19 | | 14 | -0.35 | 20 | 0.78 | -0.12 | | |

A growthy Hold Card son.

Lot
50

L7 2027K

LIM-FLEX, BULL (75/66.8)
HOMO POLLED (P-2)/DOUBLE BLACK
03/16/2022 LSBL 2027K LFM2521435

L7 EIGHT BALL 7036E UREA: 15.52
MISS L7 330A UFAT: 0.38
WULFS XCELLSIOR X252X UIMF: 2.870
MISS L7 579C ET
EXG E839 1407 M175 LS

| BW: 85 | Adj WW: 764 | Adj YW: 1232 | | | | | | | | | | |
|--------|-------------|--------------|----|----|------|----|-------|----|------|-------|------|--|
| EPDs | CED | BW | WW | YW | MK | SC | DOC | YG | CW | REA | Marb | |
| 14 | -0.2 | 59 | 82 | 20 | 0.45 | 7 | -0.40 | 10 | 0.93 | -0.02 | | |

A Homo Polled Eight Ball son with a nice blend of REA and Marbling. Out of a real productive Xcellsior cow.

Lot
51

L7 2053K

LIM-FLEX, BULL (66/57.7)
DOUBLE POLLED/BLACK
04/07/2022 LSBL 2053K LFM2521480

L7 0056H CJSL CREED 5042C UREA: 16.76
MISS L7 646D UFAT: 0.55
ALTER EGO UIMF: 3.190
MISS L7 873F MISS L7 475B

| BW: 80 | Adj WW: 736 | Adj YW: 1209 | | | | | | | | | | |
|--------|-------------|--------------|----|----|------|----|-------|----|------|------|------|--|
| EPDs | CED | BW | WW | YW | MK | SC | DOC | YG | CW | REA | Marb | |
| 17 | -1.8 | 57 | 79 | 20 | 0.47 | 14 | -0.25 | 11 | 0.78 | 0.20 | | |

-- A stout featured bull that scanned 16.76 for REA and ratios 133 for IMF. Backed by a solid Alter Ego female.

Lot
52

L7 2002K ET

LIM-FLEX, BULL (50/45.0)
HOMO POLLED (P-1)/BLACK
03/02/2022 LSBL 2002K LFM2527585 EMBRYO

SMA WATCHOUT 482 UREA: 13.94
CONLEY EXPRESS 7211 UFAT: 0.21
DPL SANDY 3040 UIMF: 2.360
CJSL WINDFALL 9072W
L7 YUMA 122Y
MISS L7 418P

| BW: 92 | Adj WW: 709 | Adj YW: 1267 | | | | | | | | | |
|--------|-------------|--------------|----|----|------|----|-------|----|------|------|------|
| EPDs | CED | BW | WW | YW | MK | SC | DOC | YG | CW | REA | Marb |
| 6 | 2.2 | 64 | 93 | 21 | 0.60 | 10 | -0.16 | 28 | 0.41 | 0.18 | |

Thick made, long patterned Express son.

Lot
53

L7 2072K

LIM-FLEX, BULL (68/60.3)
DOUBLE POLLED/DOUBLE BLACK
02/27/2022 LSBL 2072K LFM2528250

ROMN TUFF ENUFF 103T UREA: 13.78
COLE CADILLAC 05C UFAT: 0.34
COLE MISS XRATED 354A UIMF: 2.615
NORTH CAMP SILVER STAR 510
MISS L7 030H
MISS L7 108Y

| BW: 82 | Adj WW: 716 | Adj YW: 1209 | | | | | | | | | |
|--------|-------------|--------------|----|----|----|----|-------|----|------|------|------|
| EPDs | CED | BW | WW | YW | MK | SC | DOC | YG | CW | REA | Marb |
| 13 | -0.4 | 57 | 81 | 15 | | 6 | -0.25 | 21 | 0.71 | 0.15 | |

-- A nice Cadillac son going back to Chilipepper on the cow side.

Lot
54

L7 2052K

PUREBRED, BULL (100/86.6)
DOUBLE POLLED/DOUBLE BLACK
04/08/2022 LSBL 2052K NPM2521481

IVY'S BUBBA WATSON HTZ24B UREA: 16.58
L7 EIGHT BALL 7036E UFAT: 0.35
MISS L7 330A UIMF: 2.085
L7 BROKEN ARROW 4035B
MISS L7 844F
MISS L7 119Y

| BW: 78 | Adj WW: 654 | Adj YW: 1197 | | | | | | | | | |
|--------|-------------|--------------|----|----|------|----|-------|----|------|-------|------|
| EPDs | CED | BW | WW | YW | MK | SC | DOC | YG | CW | REA | Marb |
| 14 | -0.4 | 52 | 78 | 17 | 0.60 | 8 | -0.54 | 10 | 1.15 | -0.26 | |

Eight Ball was a good cross on this bulls Broken Arrow mother.

Lot
55

L7 2070K

PUREBRED, BULL (90/79.2)
DOUBLE POLLED/RED
03/27/2022 LSBL 2070K NPM2521458

COLE CADILLAC 05C UREA: 16.04
L7 0079H UFAT: 0.20
MISS L7 779E UIMF: 2.015
L7 EARNED RUN 7084E ET
MISS L7 021H
MISS L7 607D

| BW: 82 | Adj WW: 675 | Adj YW: 1168 | | | | | | | | | |
|--------|-------------|--------------|----|----|-------|----|-------|----|------|-------|------|
| EPDs | CED | BW | WW | YW | MK | SC | DOC | YG | CW | REA | Marb |
| 12 | 1.8 | 57 | 80 | 20 | -0.14 | 13 | -0.53 | 15 | 1.05 | -0.10 | |

Moderate, thick made bull out of a nice Earned Run female.

Lot
56

L7 2028K

PERCENTAGE, BULL (76/68.1)
HOMO POLLED/DOUBLE BLACK
03/02/2022 LSBL 2028K NXM2521389

MAGS AVIATOR UREA: 16.24
CJSL CREED 5042C UFAT: 0.38
CJSL 2090Z UIMF: 2.470
WULFS UNLIMITED 5035U
MISS L7 592C ET
MISS L7 510R

| BW: 88 | Adj WW: 619 | Adj YW: 1147 | | | | | | | | | |
|--------|-------------|--------------|----|----|-------|----|-------|----|------|------|------|
| EPDs | CED | BW | WW | YW | MK | SC | DOC | YG | CW | REA | Marb |
| 12 | 0.6 | 57 | 87 | 14 | -0.15 | 10 | -0.38 | 10 | 0.95 | 0.11 | |

This Creed son offers a nice blend of REA and Marbling.

Lot
57

L7 2038K

PUREBRED, BULL (100/89.6)
DOUBLE POLLED/DOUBLE BLACK
04/11/2022 LSBL 2038K NPM2521497

IVY'S BUBBA WATSON HTZ24B UREA: 14.04
L7 EIGHT BALL 7036E UFAT: 0.35
MISS L7 330A UIMF: 2.120
WULFS WILLARD 5115W
MISS L7 723E
MISS L7 116Y

| BW: 78 | Adj WW: 687 | Adj YW: 1145 | | | | | | | | | |
|--------|-------------|--------------|----|----|------|----|-------|----|------|-------|------|
| EPDs | CED | BW | WW | YW | MK | SC | DOC | YG | CW | REA | Marb |
| 14 | 0.0 | 51 | 66 | 21 | 0.35 | 7 | -0.49 | 13 | 1.01 | -0.24 | |

A long made Eight Ball son.

Lot
58

L7 2031K

PUREBRED, BULL (88/77.7)
DOUBLE POLLED/DOUBLE BLACK
03/28/2022 LSBL 2031K NPM2521461

CJSL CREED 5042C UREA: 15.66
L7 0056H UFAT: 0.29
MISS L7 646D UIMF: 1.800
WULFS XCELLSIOR X252X
MISS L7 617D
MISS L7 113Y

| BW: 82 | Adj WW: 624 | Adj YW: 1137 | | | | | | | | | |
|--------|-------------|--------------|----|----|------|----|-------|----|------|------|------|
| EPDs | CED | BW | WW | YW | MK | SC | DOC | YG | CW | REA | Marb |
| 16 | -1.8 | 47 | 68 | 21 | 0.20 | 10 | -0.51 | 6 | 0.98 | 0.05 | |

Big topped Haymaker son.



~ Open Heifers ~

Lot 59

MISS L7 214K

PERCENTAGE, FEMALE (81/72.1)
DOUBLE POLLED/DOUBLE BLACK
02/27/2022 LSBL 214K NXF2521125

AHCC BARN BURNER B907
CELL ENVISION 7023E
PBR5 ZSA ZSA 246Z
DLVL XEROX 023X
MISS L7 540C
MISS L7 352A

| BW: 87 | Adj WW: 752 | | | | | | | | | | |
|--------|-------------|-----|----|-----|----|------|-----|-------|----|------|------|
| EPDs | CED | BW | WW | YW | MK | SC | DOC | YG | CW | REA | Marb |
| | 10 | 1.5 | 82 | 126 | 21 | 1.30 | 16 | -0.41 | 42 | 1.08 | 0.00 |

The Envision daughters are quite popular around here. Not sure how this one made her way in the sale pen, but she did! Options are endless with this Percentage female. Excellent numbered female that is phenotypically superior. Don't miss your chance to own this future Donor.

Lot 60

MISS L7 228K

LIM-FLEX, FEMALE (43/39.3)
DOUBLE POLLED/BLACK
03/02/2022 LSBL 228K LFF2521391

CONNEALY CAPITALIST 028
LD CAPITALIST 316
LD DIXIE ERICA 2053
WULFS XCELLSIOR X252X
L7 HICCUP 001H
MISS L7 726E

| BW: 84 | Adj WW: 697 | | | | | | | | | | |
|--------|-------------|------|----|-----|----|----|-----|-------|----|------|------|
| EPDs | CED | BW | WW | YW | MK | SC | DOC | YG | CW | REA | Marb |
| | 13 | -0.4 | 77 | 120 | 21 | | 12 | -0.16 | 40 | 0.75 | 0.23 |

This big numbered Capitalist female has worlds of potential. Out of an up and coming Xcellsior cow.

Lot 61

MISS L7 206K

PUREBRED, FEMALE (90/79.0)
DOUBLE POLLED/DOUBLE BLACK
02/28/2022 LSBL 206K NPF2521124

MAGS ANCHOR
AHCC EARNING POWER 900E ET
LVLS 9066U
WULFS YUKON TRAIL 8084Y
MISS L7 416B
MISS L7 941W

| BW: 80 | Adj WW: 719 | | | | | | | | | | |
|--------|-------------|-----|----|-----|----|------|-----|-------|----|------|-------|
| EPDs | CED | BW | WW | YW | MK | SC | DOC | YG | CW | REA | Marb |
| | 11 | 1.4 | 72 | 114 | 21 | 1.30 | 12 | -0.40 | 42 | 1.02 | -0.04 |

Big, growthy, Purebred, Earning Power female. Good looking and a balanced set of EPDs.

Lot 62

MISS L7 204K

LIM-FLEX, FEMALE (75/68.8)
DOUBLE POLLED/RED
03/16/2022 LSBL 204K LFF2521413

BIEBER DEEP END B597
WULFS EMPRIZE 2424E
WULFS ZUNI 2424Z
L7 BELLAGIO 4015B
MISS L7 731E
MISS L7 850U

| BW: 72 | Adj WW: 662 | | | | | | | | | | |
|--------|-------------|------|----|-----|----|------|-----|-------|----|------|------|
| EPDs | CED | BW | WW | YW | MK | SC | DOC | YG | CW | REA | Marb |
| | 13 | -0.9 | 70 | 104 | 23 | 0.72 | 11 | -0.46 | 33 | 1.12 | 0.15 |

A lot to love about this big numbered red head. The Emprize, Bellagio cross worked quite well on this gal.

Lot 63

MISS L7 224K

PUREBRED, FEMALE (93/82.5)
DOUBLE POLLED/RED
03/10/2022 LSBL 224K NPF2521398

ROMN TUFF ENUFF 103T
COLE CADILLAC 05C
COLE MISS XRATED 354A
IVY'S BUBBA WATSON HTZ24B
MISS L7 004H
MISS L7 427B

| BW: 78 | Adj WW: 654 | | | | | | | | | | |
|--------|-------------|-----|----|----|----|-------|-----|-------|----|------|-------|
| EPDs | CED | BW | WW | YW | MK | SC | DOC | YG | CW | REA | Marb |
| | 12 | 0.0 | 63 | 86 | 15 | -0.49 | 12 | -0.50 | 19 | 1.18 | -0.17 |

Nice made, moderate Cadillac female. Backed by a real good Bubba Watson cow going back to the 427 cow.

Lot 64

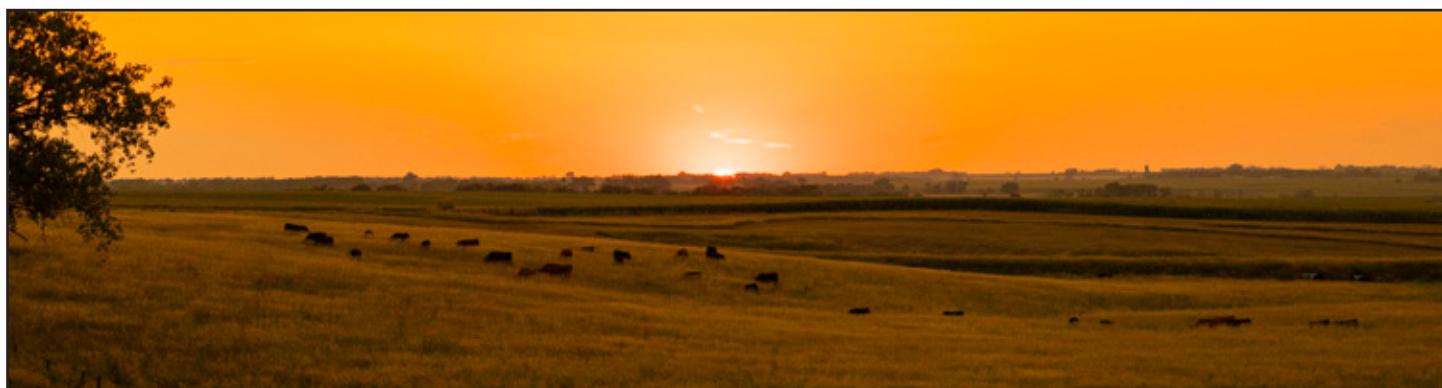
MISS L7 277K

PUREBRED, FEMALE (90/79.9)
DOUBLE POLLED/RED
03/01/2022 LSBL 277K NPF2521384

COLE CADILLAC 05C
L7 0079H
MISS L7 779E
WULFS UNLIMITED 5035U
MISS L7 028H
MISS L7 560C

| BW: 74 | Adj WW: 573 | | | | | | | | | | |
|--------|-------------|-----|----|----|----|-------|-----|-------|----|------|-------|
| EPDs | CED | BW | WW | YW | MK | SC | DOC | YG | CW | REA | Marb |
| | 11 | 1.2 | 56 | 79 | 18 | -0.14 | 14 | -0.48 | 23 | 1.03 | -0.23 |

This Hold Card is pretty sporty. Moderate made and deep sided.



~ Reference Sires ~

| Reference Sires | Sire | Dam | CED | BW | WW | YW | MK | TM | CEM | SC | DOC | YG | CW | REA | MB | SMTI |
|----------------------------|---------------------------|---------------------------|-----|------|-----|-----|----|----|-----|-------|-----|-------|----|------|-------|-------|
| L7 HOLD CARD 0079H | COLE CADILLAC 05C | MISS L7 779E | 12 | 1.1 | 53 | 75 | 20 | 46 | 7 | -0.50 | 13 | -0.28 | 26 | 0.75 | -0.02 | 47.39 |
| AHCC EARNING POWER 900E ET | MAGS ANCHOR | LVLS 9066U | 12 | 1.2 | 83 | 139 | 17 | 59 | 9 | 2.40 | 17 | -0.18 | 57 | 0.87 | 0.41 | 71.77 |
| WULFS HICKOK 7056H | WULFS DEFEND K909ET | WULFS EDWINNA 7056E | 7 | 3.0 | 82 | 126 | 28 | 69 | 3 | 1.50 | 17 | -0.31 | 42 | 1.03 | 0.08 | 60.27 |
| L7 HUMDINGER 0035H | CELL ENVISION 7023E | MISS L7 514C | 8 | 1.7 | 82 | 137 | 24 | 64 | 4 | 1.25 | 20 | -0.45 | 53 | 1.44 | -0.18 | 52.22 |
| L7 HAYMAKER 0056H | CJSL CREED 5042C | MISS L7 646D | 22 | -3.7 | 55 | 85 | 22 | 49 | 13 | -0.22 | 13 | -0.25 | 21 | 0.79 | 0.32 | 60.31 |
| L7 GUN POWDER 9037G | CELL ENVISION 7023E | MISS L7 011X | 8 | 2.2 | 71 | 113 | 20 | 55 | 6 | 1.80 | 13 | -0.48 | 30 | 1.14 | 0.00 | 55.64 |
| L7 EZ RIDER 7082E ET | PVF INSIGHT 0129 | L7 YUMA 122Y | 7 | 3.5 | 66 | 101 | 20 | 53 | 3 | 1.20 | 11 | -0.36 | 34 | 1.10 | -0.03 | 51.96 |
| CJSL CREED 5042C | MAGS AVIATOR | CJSL 2090Z | 16 | -1.0 | 67 | 120 | 16 | 49 | 11 | -0.40 | 10 | 0.08 | 36 | 0.61 | 0.68 | 74.66 |
| L7 EIGHT BALL 7036E | IVY'S BUBBA WATSON HTZ24B | MISS L7 330A | 15 | 0.5 | 60 | 83 | 19 | 49 | 10 | 0.35 | 4 | -0.40 | 20 | 0.99 | -0.35 | 38.42 |
| IVY'S BUBBA WATSON HTZ24B | IVY'S MARKSMAN HTZ 10Z | IVYS UNIQUE PERFECTION 3U | 16 | -1.3 | 67 | 94 | 22 | 55 | 12 | 0.10 | 12 | -0.63 | 26 | 1.49 | -0.35 | 42.47 |
| COLE CADILLAC 05C | ROMN TUFF ENUFF 103T | COLE MISS XRATED 354A | 15 | -2.1 | 61 | 84 | 12 | 42 | 9 | -1.30 | 8 | -0.36 | 19 | 0.99 | 0.02 | 51.86 |
| TMCK DARTMOUTH 360D | TMCK ARCHITECT 031A | TMCK518Z | 15 | -0.3 | 84 | 124 | 55 | 67 | 9 | 0.00 | 15 | -0.28 | 25 | 0.78 | -0.10 | 53.85 |
| AHCC HEARTLAND 901F ET | MAGS ANCHOR | LVLS 9066U | 12 | -0.2 | 82 | 134 | 19 | 60 | 8 | 1.10 | 17 | -0.10 | 66 | 0.70 | 0.18 | 62.29 |
| CELL ENVISION 7023E | AHCC BARN BURNER B907 | PBR5 ZSA ZSA 246Z | 8 | 2.6 | 105 | 171 | 18 | 70 | 5 | 2.40 | 22 | -0.41 | 63 | 1.50 | 0.02 | 66.05 |



• Terms and Conditions •

Terms: Cash - settlement immediately after the sale unless prior arrangements have been made.

Health: September - Cattle Master 4 (IBR-BVD-PI3-BRSV); 7 way Clostridium; Haemophilus Somnus. Heifers are all Brucellosis vaccinated. October - Three weeks later at weaning; Cattle Master 4, Haemophilus Somnus, Ivomec. April - Bulls are scrotal measured, semen tested, Brucellosis tested. Breeding age females have had Preg 9, Anthrax in spring.

(1) On all animals sold, health tests will be announced at the sale or printed in the sale catalog. It is understood that health papers reflect the condition of the animal at the time of the sale but carry no further guarantee as to the future health of the animal. (2) Buyers having special health requests or who wish to take cattle into states with specific or rigid health regulations should inquire specifically about the health tests required for entry into their state. (3) All females sold are considered to be calf-hood vaccinated for Brucellosis unless they are otherwise stated in the catalog or announced from the block. It is suggested that verification of vaccination be written on the health certificate.

Delivery: Free delivery to central locations in South Dakota and surrounding states.

Guarantee: All bulls are semen tested and are guaranteed to be breeders and settle cows. Scrotal measurements will be available sale day. All females one year of age are guaranteed breeders.

Purchaser's Risk: Each animal becomes the risk of the purchaser as soon as sold. It shall be the obligation of the seller to see that the animals are fed and cared for free of charge to the purchaser for at least 48 hours following the sale. It shall be the obligation of the purchaser to see that trucking of the animal and care of the animal past the first 48 hours following the sale are taken care of.

Multiple Herd Use: The North American Limousin Association new rules state: any bull used A.I. in more than one herd, must have the dam blood typed. If you are planning on using any bulls this way, please write on invoice sale day so we have the blood work on those cows on file. Lot 31 is not eligible for A.I. use. Dams were sold before blood typed.

Liability: Each animal will be at the buyer's risk as soon as sold, but will be cared for by the seller for a reasonable period of time. Every precaution will be taken for the welfare of the cattle sold. The L7 Bar Ranch will

not be responsible for accidents, but every effort will be made to provide for the safety and comfort of those attending the sale.

Identification of Animals: (1) Each animal sold will have a readable tattoo corresponding to its registration paper. (2) Seller agrees to check all tattoos for accuracy prior to the sale. The buyer has the responsibility for rechecking the tattoos after taking possession and reporting any discrepancies to the seller immediately. (3) All animals to be sold will be identified by their official registration number, their tattoo and their registered name. If nicknames are used, they should be in addition to the other information. (4) The North American Limousin Foundation (NALF) board recommends that when any animal is sold, there is complete disclosure of any retained genetics in the form of pregnant recipients, frozen embryos or frozen semen.

Registration Certificates: (1) The seller of the animal will submit the original registration certificate with transfer information or an application for registration with transfer information on it so that a certificate can be produced by the Foundation and transferred to the new buyer. The seller must sign the back of the certificate on the application to authorize the transfer. (2) It is the responsibility of the seller to provide NALF with the buyer's complete name, address and membership number (if available) so that they can complete the transfer. It is important that the membership number be given if the buyer is already a member of NALF. (3) It is the seller's responsibility to provide the certificate or application, and transfer information to NALF within 60 days of sale, and pay transfer and registration fees.

Announcements: (1) Any change from the information that is printed in the catalog will be announced from the auction block. (2) All announcements made from the auction block take precedence over the printed catalog. (3) Catalogued lots not selling will be announced prior to the sale.

Mail Bids: Mailed or telephoned bids will be handled in a most confidential manner. If you are unable to be present to place your bids, please feel free to contact the Peterson's.

Rod & Wendy Peterson
34715 255th St.
Pukwana, SD 57370

FIRST CLASS MAIL
U.S. POSTAGE
PAID
MITCHELL, SD
PERMIT NO. 71