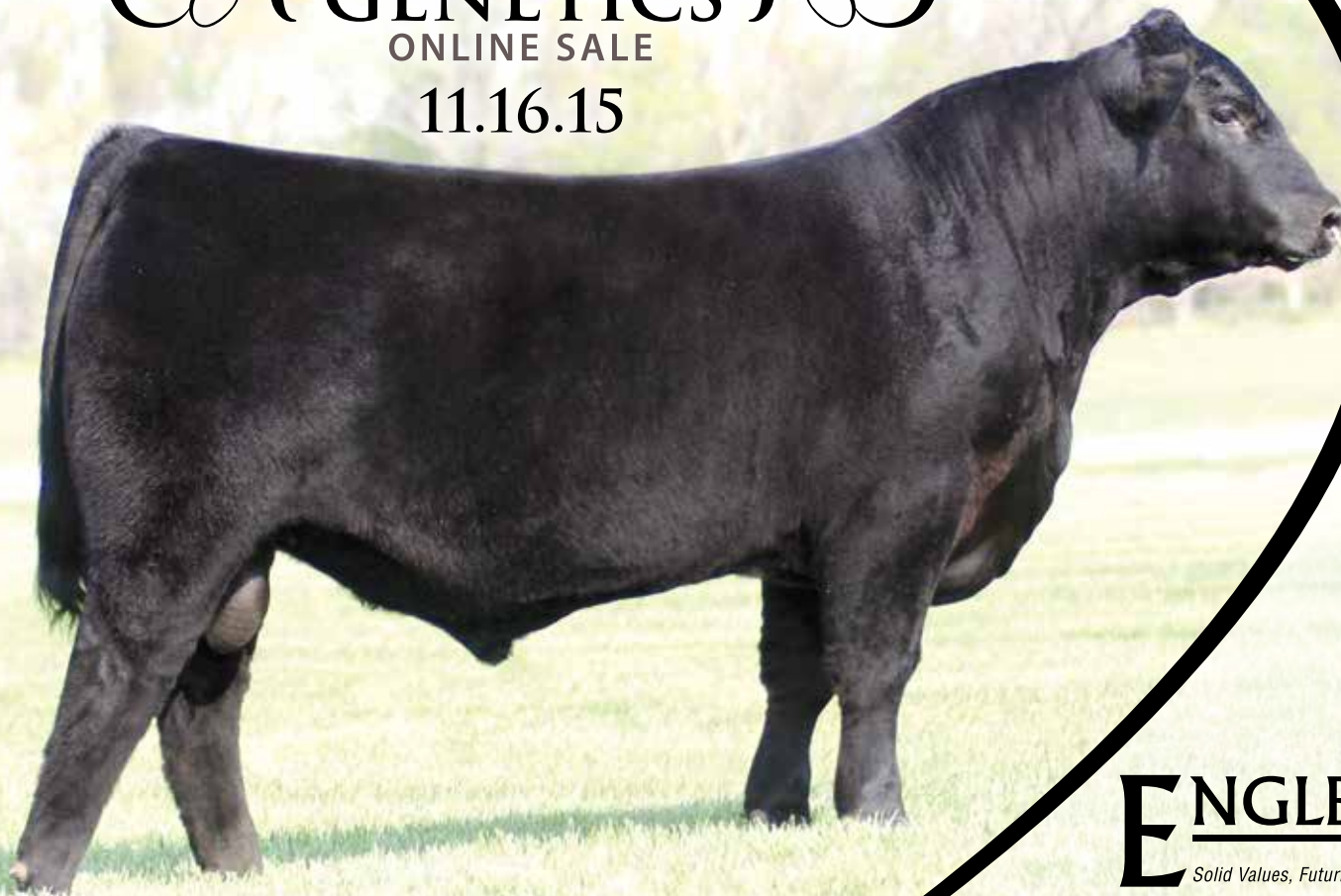


ENGLEWOOD FARMS

{ TOP-SHELF } GENETICS

ONLINE SALE

11.16.15



ENGLEWOOD
Solid Values, Futurist Vision **FARMS**

ENGLEWOOD FARMS
{ TOP-SHELF }
GENETICS }
ONLINE SALE

NOVEMBER 16, 2015

Bidding Opens 7 a.m. EST
Bidding Closes 7 p.m. EST

SALE HOSTED BY...
www.MCMarketingManagement.com

SALE MANAGEMENT:



Kiley McKinna • 402.350.3447

20 LIMOUSIN &
LIM-FLEX LOTS

OPENS - BREDS - BULL - SEMEN PACKAGES

Open Heifers On Display at NAILE

Bred Females & Bulls can be inspected at the farm

Limousin EPDs current as of 10/13/15

SALE CONSULTANTS:

GRASSROOTS
CONSULTING

Mark Smith • 515.229.5227

CATTLE IN DEMAND

Jered Shipman • 806.983.7226

Todd Alford • 706.207.9454

Holly Alford • 706.270.3994

ENGLEWOOD
FARMS
Solid Values, Futurist Vision

John Ethington - Manager - 859.533.1301

Nathan Hicks - Herdsman - 859.576.6738

John Tobe - Owner - 859.621.4411

761 Engleman Lane - Lancaster, Kentucky 40444

john@englewoodfarm.com - www.englewoodfarm.com

This will be your last opportunity to invest in one of the most influential Limousin sires in recent times. Since commanding \$48,000 at the March 2012 Magness Bull Sale, Y-Axis has risen through the ranks as one of the most consistent and impressive AI sires the breed has known. With 658 progeny registered thus far, Y-Axis has proven to work on a variety of cow types, creating females with style and substance and bulls with power and capacity. Given his ability to stamp his progeny, in conjunction with his impressive EPD profile, Y-Axis has become the go to AI sire for cattlemen across the United States and Canada.



EXCLUSIVE SEMEN PACKAGES

1 MAGS Y-AXIS

LIM-FLEX(50/43.8)
BULL
3/29/2011
MAGS 3847Y
HOMO BLACK (T)
HOMO POLLED (P)
LFM1985477

C R A BEXTOR 872 5205 608
TC ABERDEEN 759
TC BLACKBIRD 4034

DHVO DEUCE 132R
MAGS UAHUKA
CARROUSELS PINA COLADA

BAR EXT TRAVELER 205
CRA LADY JAYE 608 498 SE
BON VIEW DESIGN 208
TC BLACKBIRD 1013
GPFF BLAQUE RULON
AMY JO DHAN 20L
AUTO BLACK DAKOTA 129J
ELMW GINNIE P58G

ACT. BW: 72 • ADJ. WW: 861 • ADJ. YW: 1,327 • ADJ. IMF: 3.76 • ADJ. REA: 17.90

CD	BW	WW	YW	MK	CM	SC	DC	CW	RE	YG	MS	\$MI
16	-1.5	73	127	30	8	1.3	38	43	1.16	-.31	-.05	53
10%	15%	20%	5%	20%	20%	3%	2%	10%	1%	10%	60%	45%

Owned with Magness Land & Cattle and Edwards Limousin
Semen is off of the open market.

Only 20 exclusive semen packages will be sold
For \$2,500, buyers will receive 90 units of semen.



2 ENG D CALYPSO 5528C

LIM-FLEX(75/66.8)
COW
4/11/2015
ENG D 5528C
HOMO BLACK (T)
HOMO POLLED (T)
LFF2079856

AHCC WESTWIND W544
ENG D ZIP LINE 2515Z
RTTB ROYALTY 2505R
O C C EMBLAZON 854E
ENG D ELITE 2521Z
LESF ELITE 218S

KAJO RESPONDER 120R
AHCC MISS WULF HUNT R544
GPFF BLAQUE RULON
WULFS JULIETTE 9025J
D H D TRAVELER 6807
DIXIE ERICA OF C H 1019
GPFF BLAQUE RULON
GPFF EXTRA SWEET ELITE

CD	BW	WW	YW	MK	CM	SC	DC	CW	RE	YG	MS	\$MI
11	0.1	63	94	20	4	0.5	12	26	.44	-.09	.01	50
20%	25%	60%	55%	90%	80%	60%	80%	60%	60%	65%	55%	65%



3 ENG D CADENCE 5530C

LIM-FLEX(75/66.8)
COW
5/11/2015
ENG D 5530C
HOMO BLACK (T)
HOMO POLLED (T)
LFF2079858

AHCC WESTWIND W544
ENG D ZIP LINE 2515Z
RTTB ROYALTY 2505R
O C C EMBLAZON 854E
ENG D ELITE 2521Z
LESF ELITE 218S

KAJO RESPONDER 120R
AHCC MISS WULF HUNT R544
GPFF BLAQUE RULON
WULFS JULIETTE 9025J
D H D TRAVELER 6807
DIXIE ERICA OF C H 1019
GPFF BLAQUE RULON
GPFF EXTRA SWEET ELITE

CD	BW	WW	YW	MK	CM	SC	DC	CW	RE	YG	MS	\$MI
11	0.8	63	94	20	4	0.5	12	26	.44	-.09	.01	50
20%	35%	60%	55%	90%	80%	60%	80%	60%	60%	65%	55%	65%

4 ENGD CHANELLE 5529C

LIM-FLEX(75/66.8)
COW
5/1/2015
ENGD 5529C
HOMO BLACK (T)
HOMO POLLED (T)
LFF2079857

AHCC WESTWIND W544
ENGD ZIP LINE 2515Z
RTTB ROYALTY 2505R

O C C EMBLAZON 854E
ENGD ELITE 2521Z
LESF ELITE 218S

KAJO RESPONDER 120R
AHCC MISS WULF HUNT R544
GPFF BLAQUE RULON
WULFS JULIETTE 9025J
D H D TRAVELER 6807
DIXIE ERICA OF C H 1019
GPFF BLAQUE RULON
GPFF EXTRA SWEET ELITE

CD	BW	WW	YW	MK	CM	SC	DC	CW	RE	YG	MS	\$MI
11	-1.0	63	94	20	4	0.5	12	26	.44	-.09	.01	50
20%	10%	60%	55%	90%	80%	60%	80%	60%	60%	65%	55%	65%



5 HEWCR TILLY GIRL 5002C

LIM-FLEX(75/66.9)
COW
1/17/2015
ENGD 5002C
HOMO BLACK (P)
DBL POLLED
LFF2082860

TC ABERDEEN 759
MAGS Y-AXIS
MAGS UAHUKA

WULFS UPGRADE 0500U
ENGD TILLY GIRL 1360Y
ENGD TILLY GIRL 339T

C R A BEXTOR 872 5205 608
TC BLACKBIRD 4034
DHVO DEUCE 132R
CARROUSELS PINA COLADA
JLWM DIRE STRAYTS 4109P
WULFS KYAH 0500K
KRVN NASKAR 013N
MAGS RENEGADE GIRL

CD	BW	WW	YW	MK	CM	SC	DC	CW	RE	YG	MS	\$MI
10	0.6	66	105	24	8	1.1	21	33	.78	-.20	-.04	50
30%	30%	45%	30%	60%	15%	10%	40%	30%	10%	30%	65%	65%



LIM-FLEX OPEN HEIFERS



6 ENGD CANT WAIT 5521C

PUREBRED(100/90.7)
COW
3/2/2015
ENGD 5521C
DBL BLACK
HOMO POLLED (T)
NPF2079854

AHCC WESTWIND W544
ENGD ZIP LINE 2515Z
RTTB ROYALTY 2505R

AUTO DOLLAR GENERAL 122R

MAGS YARD GRASS
DVFC NINA 145N

KAJO RESPONDER 120R
AHCC MISS WULF HUNT R544
GPFF BLAQUE RULON
WULFS JULIETTE 9025J
LVLS SECRET WEAPON 4408K
AUTO KYRIA 232K
DVFC WARDEN 233K
EXLR LUVLY 081F

CD	BW	WW	YW	MK	CM	SC	DC	CW	RE	YG	MS	\$MI
9	2.2	74	110	29	9	0.5	14	36	.28	-.01	.03	53
35%	65%	15%	20%	20%	10%	70%	70%	20%	90%	90%	55%	50%

7 ENGD COLEENE 5517C

LIM-FLEX(50/45)
COW
3/2/2015
ENGD 5517C
HOMO BLACK (T)
HOMO POLLED (T)
LFF2079852

TC ABERDEEN 759
MAGS Y-AXIS
MAGS UAHUKA

MAGS WINSTON

SBLX YULLA
SBLX ULLA 9163U

C R A BEXTOR 872 5205 608
TC BLACKBIRD 4034
DHVO DEUCE 132R
CARROUSELS PINA COLADA
BT CROSSOVER 758N
MAGS STRAWBERRY
G A R INTEGRITY
AUTO ELITE 270F

CD	BW	WW	YW	MK	CM	SC	DC	CW	RE	YG	MS	\$MI
14	-0.8	66	111	29	9	0.6	27	35	.73	-.17	.26	61
5%	15%	45%	15%	20%	10%	45%	20%	25%	15%	40%	25%	25%

ENG D 4020B

LIM-FLEX(56/50.2)
COW
3/11/2014
ENG D 4020B
DBL BLACK
DBL POLLED
LFF2047467

TC ABERDEEN 759
MAGS Y-AXIS
MAGS UAHUKA

MAGS XUKALANI
ASAP ZANDY 012Z
DL X-OTIC 505X

C R A BEXTOR 872 5205 608
TC BLACKBIRD 4034
DHVO DEUCE 132R
CARROUSELS PINA COLADA
RITO 112 OF 2536 RITO 616
MAGS UKALANI
GPFF BLAQUE RULON
EXLR LEXI 7370L

CD	BW	WW	YW	MK	CM	SC	DC	CW	RE	YG	MS	\$MI
15	-0.2	69	109	24	8	1.1	22	33	.81	-.22	.09	56
3%	20%	30%	20%	60%	15%	10%	40%	30%	10%	20%	45%	40%

Due 3/20/2016 to ENG D Emblazon 4505B (50% LF/HB/HP)

ENG D MISS EXIS 4057B

LIM-FLEX(25/21.9)
COW
5/9/2014
ENG D 4057B
BLACK
HOMO POLLED (P)
LFF2082861

TC ABERDEEN 759
MAGS Y-AXIS
MAGS UAHUKA

LCJ ADVANCER 7132
WCS MISS ADVANCER 135
WCS MISS GOLD ROBBER 7071

C R A BEXTOR 872 5205 608
TC BLACKBIRD 4034
DHVO DEUCE 132R
CARROUSELS PINA COLADA

CD	BW	WW	YW	MK	CM	SC	DC	CW	RE	YG	MS	\$MI
-	1.6	64	104	23	-	-	-	-	-	-	-	-
-	-	55%	55%	30%	70%	-	-	-	-	-	-	-

Due 3/10/2016 to ENG D Emblazon 4505B (50% LF/HB/HP)



LIM-FLEX BRED HEIFERS



10 ENG D 4016B

LIM-FLEX(50/44.9)
COW
3/10/2014
ENG D 4016B
DBL BLACK
DBL POLLED
LFF2047460

TC ABERDEEN 759
MAGS Y-AXIS
MAGS UAHUKA
SAV FINAL ANSWER 0035
WULFS ZINTLEY 2145Z
WULFS UP TO TEN 8524U

C R A BEXTOR 872 5205 608
TC BLACKBIRD 4034
DHVO DEUCE 132R
CARROUSELS PINA COLADA
SITZ TRAVELER 8180
SAV EMULOUS 8145
WULFS RENO 2522R
WULFS REPORTER 5036R

CD	BW	WW	YW	MK	CM	SC	DC	CW	RE	YG	MS	\$MI
16	-0.4	76	123	27	8	1.3	28	41	.86	-.18	.11	59
1%	15%	10%	3%	35%	15%	2%	15%	10%	3%	35%	40%	30%

Due 3/10/2016 ENG D Emblazon 4505B (50% LF/HB/HP)



11 ENG D 4002B

LIM-FLEX(50/44.4)
COW
2/13/2014
ENG D 4002B
DBL BLACK
HOMO POLLED (P)
LFF2047446

TC ABERDEEN 759
MAGS Y-AXIS
MAGS UAHUKA
WULFS UPGRADE 0500U
ENG D ZAHRA 2012Z
TCF RITA W111

C R A BEXTOR 872 5205 608
TC BLACKBIRD 4034
DHVO DEUCE 132R
CARROUSELS PINA COLADA
JLWM DIRE STRAYTS 4109P
WULFS KYAH 0500K
COOLEY BROOKS 163517
SANDPOINT RITA 5368

CD	BW	WW	YW	MK	CM	SC	DC	CW	RE	YG	MS	\$MI
15	-1.8	56	93	26	11	-	-	21	.75	-.22	.14	54
3%	4%	85%	60%	40%	1%	-	-	80%	10%	20%	35%	45%

Due 4/5/2016 to ENG D Emblazon 4505B (50% LF/HB/HP)

12 ENG D 4006B

LIM-FLEX(50/43.8)
COW
2/19/2014
ENG D 4006B
HOMO BLACK (P)
DBL POLLED
LFF2047450

TC ABERDEEN 759

MAGS Y-AXIS

MAGS UAHUKA

MAGS XUKALANI

STSF ZANZABAR 006Z

HAHK WHITE WEDDING 766W

C R A BEXTOR 872 5205 608

TC BLACKBIRD 4034

DHVO DEUCE 132R

CARROUSELS PINA COLADA

RITO 112 OF 2536 RITO 616

MAGS UKALANI

DHVO DEUCE 132R

EXLR SCOTCH CAP 1005N

CD	BW	WW	YW	MK	CM	SC	DC	CW	RE	YG	MS	\$MI
16	-0.8	71	112	25	8	1.2	24	34	.80	-.20	.17	59
1%	15%	25%	15%	50%	15%	2%	30%	25%	10%	30%	35%	25%

Due 4/5/2016 to ENG D Emblazon 4505B (50% LF/HB/HP)



13 ENG D 4003B

LIM-FLEX(62/58)
COW
2/17/2014
ENG D 4003B
DBL BLACK
DBL POLLED
LFF2047447

TC ABERDEEN 759

MAGS Y-AXIS

MAGS UAHUKA

WULFS X SIGN HERE X578X

ENG D ZANDUA 2030Z

EAFF GOLD SUZANNE 707S

C R A BEXTOR 872 5205 608

TC BLACKBIRD 4034

DHVO DEUCE 132R

CARROUSELS PINA COLADA

S A V NET WORTH 4200

WULFS ROYALTY 5078R

MINE GOLD MEDAL 436G

OAKM LADY SUZANNE 819B

CD	BW	WW	YW	MK	CM	SC	DC	CW	RE	YG	MS	\$MI
14	-1.0	57	96	32	10	0.7	22	25	.93	-.29	0	50
5%	10%	85%	50%	10%	3%	35%	40%	65%	2%	5%	60%	65%

Due 3/15/2015 to ENG D Emblazon 4505B (50% LF/HB/HP)



LIM-FLEX BREED HEIFERS



14 ENG D 4035B

LIM-FLEX(50/44.3)
COW
3/18/2014
ENG D 4035B
DBL BLACK
HOMO POLLED (P)
LFF2047479

TC ABERDEEN 759
MAGS Y-AXIS
MAGS UAHUKA
G A R PREDESTINED
TGBC LUVLY 121Z 5899J
EXLR LUVLY 821M

C R A BEXTOR 872 5205 608
TC BLACKBIRD 4034
DHVO DEUCE 132R
CARROUSELS PINA COLADA
B/R NEW DESIGN 036
G A R EXT 4206
AUTO BLACK DAKOTA 129J
EXLR LUVLY 084F

CD	BW	WW	YW	MK	CM	SC	DC	CW	RE	YG	MS	\$MI
11	1.1	69	117	29	7	0.9	24	40	.83	-.19	.29	63
20%	40%	30%	10%	20%	30%	25%	30%	10%	5%	30%	20%	15%

Due 4/5/2016 to ENG D Emblazon 4505B (50% LF/HB/HP)



15 ENG D BRIDESMAID 4049B

LIM-FLEX(67/61.1)
COW
3/29/2014
ENG D 4049B
DBL BLACK
HOMO POLLED (P)
LFF2082749

TC ABERDEEN 759
MAGS Y-AXIS
MAGS UAHUKA
AHCC WESTWIND W544
TMCK WALL OF FAME 62Z
HSF WALL OF FAME

C R A BEXTOR 872 5205 608
TC BLACKBIRD 4034
DHVO DEUCE 132R
CARROUSELS PINA COLADA
KAJO RESPONDER 120R
AHCC MISS WULF HUNT R544
RPY PAYNES SIGNAL 6S
HSF PENTHOUSE PIN-UP

CD	BW	WW	YW	MK	CM	SC	DC	CW	RE	YG	MS	\$MI
11	2.6	74	122	26	8	0.9	25	43	.62	-.11	-.07	51
20%	75%	15%	3%	40%	15%	15%	25%	5%	25%	60%	70%	60%

Due 3/25/2016 to ENG D Emblazon 4505B (50% LF/HB/HP)

16 ENGD 4019B

LIM-FLEX(75/66.9)
COW
3/11/2014
ENGD 4019B
DBL BLACK
HOMO POLLED (P)
LFF2047466

JLWM DIRE STRAYTS 4109P
WULFS UPGRADE 0500U
WULFS KYAH 0500K

G A R PREDESTINED
ENGD PINA COLODA 702Y
PBRS TOUCH ME GENTLY 798T

ROMN JUSTICE
CORL TEMPEST 52G
WULFS GUARDIAN 5074G
MISS WULFETTE 8112H
B/R NEW DESIGN 036
G A R EXT 4206
DHVO DEUCE 132R
CARROUSELS PINA COLODA

CD	BW	WW	YW	MK	CM	SC	DC	CW	RE	YG	MS	\$MI
3	4.3	67	101	23	9	1.2	9	35	.34	.01	.33	62
95%	95%	40%	40%	70%	10%	4%	90%	25%	80%	90%	20%	20%

Due 3/20/2016 to ENGD Emblazon 4505B (50% LF/HB/HP)



17 LEWCR XTRASPECIAL 4027B

LIM-FLEX(75/67.5)
COW
3/14/2014
ENGD 4027B
DBL BLACK
DBL POLLED
LFF2082859

JLWM DIRE STRAYTS 4109P
WULFS UPGRADE 0500U
WULFS KYAH 0500K

MYTTY IN FOCUS
SEE XTRASPECIAL
MAGS SCANDAL

ROMN JUSTICE
CORL TEMPEST 52G
WULFS GUARDIAN 5074G
MISS WULFETTE 8112H
S A F FOCUS OF ER
MYTTY COUNTESS 906
GPFF BLAQUE RULON
MAGS MANDA

CD	BW	WW	YW	MK	CM	SC	DC	CW	RE	YG	MS	\$MI
7	1.1	62	91	23	11	1.3	14	25	.3	-.04	.20	56
60%	40%	65%	65%	70%	1%	2%	70%	65%	85%	80%	30%	35%

Due 4/5/2016 to ENGD Emblazon 4505B (50% LF/HB/HP)



LIM-FLEX BRED HEIFERS



18 ENG D 4028B

LIM-FLEX(75/67.6)
COW
3/14/2014
ENG D 4028B
HOMO BLACK (P)
DBL BLACK
LFF2047474

JLWM DIRE STRAYTS 4109P
WULFS UPGRADE 0500U
WULFS KYAH 0500K
SPRING CREEKS URLACHER 311U
ENG D MISS URLACHER 710Y
LOGAN'S 903R

ROMN JUSTICE
COLR TEMPTTEST 52G
WULFS GUARDIAN 5074G
MISS WULFETTE 8112H
CARROUSELS PEAK POWER
2K PRIDE 311
EXLR NEW GENERATION 071M
EXAR BLACKBIRD 8364

CD	BW	WW	YW	MK	CM	SC	DC	CW	RE	YG	MS	\$MI
1	5.1	62	84	20	2	0.9	11	33	.06	.04	.06	51
95%	95%	65%	55%	90%	95%	15%	85%	30%	95%	95%	50%	60%

Due 3/10/2016 to ENG D Emblazon 4505B (50% LF/HB/HP)



19 CMCC 127A

LIM-FLEX(50/44.7)
COW
9/5/2013
CMCC 127A
DBL BLACK
DBL POLLED
LFF2042171

SAV FINAL ANSWER 0035
S A V PIONEER 7301
S A V BLACKBIRD 5297
KAJO RESPONDER 120R
CMCC127Y
CMCC 821S

SITZ TRAVELER 8180
SAV EMULOUS 8145
BOYD NEW DAY 8005

JCL LODESTAR 27L
KAJO SHERYL SWOOPS 11H
RADS BLACK PRODIGY
CMCC 544H

CD	BW	WW	YW	MK	CM	SC	DC	CW	RE	YG	MS	\$MI
10	0.6	66	110	27	5	1.1	13	37	.77	-.07	.31	62
30%	30%	45%	20%	35%	65%	4%	75%	20%	10%	70%	20%	20%

Due 3/25/2016 to ENG D Emblazon 4505B (50% LF/HB/HP)



LIM-FLEX BULL

2020 ENGD COLOSSAL 5522C

LIM-FLEX(75/66.8)
BULL
3/6/2015
ENGD 5522C
HOMO BLACK (T)
HOMO POLLED (T)
LFM2079855

AHCC WESTWIND W544
ENGD ZIP LINE 2515Z
RTTB ROYALTY 2505R

O C C EMBLAZON 854E
ENGD ELITE 2521Z
LESF ELITE 2185

KAJO RESPONDER 120R
AHCC MISS WULF HUNT R544
GPFF BLAQUE RULON
WULFS JULIETTE 9025J
D H D TRAVELER 6807
DIXIE ERICA OF C H 1019
GPFF BLAQUE RULON
GPFF EXTRA SWEET ELITE

CD	BW	WW	YW	MK	CM	SC	DC	CW	RE	YG	MS	\$MI
11	0.7	63	94	20	4	0.5	12	26	.44	-.09	.01	\$0
20%	35%	60%	55%	90%	80%	60%	80%	60%	60%	65%	55%	65%

Herd-Sire Prospect

John E. Tobe started Englewood Farms in 1981. In 1991, while building Laura's Lean Beef Company, a local cattle buyer suggested they try Limousin bulls on commercial females.

During the Laura's years, the company had shear-test and taste panels done and the results on the steaks from Limousin-cross cattle were amazing. They tested equally tender as compared to Choice and Prime steaks, and more tender than other exotic-cattle breeds.

When the decision was made to run registered cattle alongside the commercial herd, fullblood Limousin cattle with above-breed-average EPDs in growth, milk and ribeye were chosen.

When he sold his interest in Laura's in 2007, Tobe decided to get more involved in the Limousin seedstock business and invested in a herd of purebred Limousin cattle. John Ethington also joined Tobe in 2007, with a primary focus on building the purebred herd, one at a time, from some great Limousin cattle.

The initial focus with the purebred cattle was to maintain muscle so when crossed with other breeds they could consistently produce Choice carcasses and eliminate most Yield Grade 4s and 5s, while keeping the increased feed efficiency and carcass characteristics the Limousin breed is known for.

The next step in the evolutionary process was the purchase of several Angus and Lim-Flex® females that were very high in marbling. The Lim-Flex cattle produced by these females added considerably more maternal and marbling without sacrificing inherent breed strengths.

Regardless of the breed or the percent blood, since day one Englewood Farms has focused on raising the best cattle possible while supplying high levels of customer service. While the program continues to evolve, those two core values remain at the forefront.



ENGLEWOOD
Solid Values, Futurist Vision **FARMS**