



COLEMAN ANGUS
YOUR MATERNAL SOURCE



**Online
EMBRYO Sale**

8.29.23

www.LiveAuctions.TV

LIVE • 8.29.23 • 7PM

ONLINE SALE

www.LiveAuctions.TV



COLEMAN ANGUS

YOUR MATERNAL SOURCE

Larry & Dee Coleman Family
406.240.2751

Jeremy & Jenny Haag Family
406.833.0117

WWW.COLEMANANGUS.COM

Colemanangus@blackfoot.net | 40067 Morris Road | Charlo, MT 59824

Lot 1 – 3 IVF SF F EMBRYOS

Coleman Donna 5247 x Coleman Banker 9215



Coleman Donna 5247
Dam of Embryos

Coleman Bravo 6313

Coleman Banker 9215

19583404 Coleman Donna 4203

Coleman Charlo 0256

Coleman Donna 5247

18402681 Coleman Donna 194

CE	BW	WW	YW	MILK	SC	MARB	RE	SM
13	-0.4	66	119	30	.81	.37	.47	92

Bid price is per embryo. Package prices is 3x bid price. Buyer is responsible for cost of shipping embryos.

Online EMBRYO Auction Closes 8/29 | 7 PM (MST)

Donna 5247 is a Model Angus Cow, and Pathfinder dam is as good as it gets and as consistent of a producer that has ever been produced in our program. 5247 has tremendous three-dimensional shape, volume, muscle, and mass. Combine this with a progeny production record of BR 4/94, NR 4/111, and YR 3/113, with a calving interval under 360 days. 5247's dam was also a Pathfinder, then back to Donna 386, and Donna J311 who started was the Matriarch that started the Donna cow family here. 5247, has had numerous top selling females and sons. In our recent Bull Sale in February, 5247 had 5 different sons that sold into leading Registered operations across the country. 5247 has also had progeny top numerous other sales across the country. These embryos are sired by the now deceased "Banker" who is a bull we kept to use in our program, visitors have loved him here this summer. "Banker" is extremely impressive, exceptionally smooth, extremely sound on the move, stout, with about as much rib shape and



Coleman Banker 9215
Sire of Embryos

depth as you can put in one. Banker's flush sisters that calved here this summer are as impressive as anything we have ever calved here. We have plugged Banker in here extremely hard, Banker's first calves are very impressive. Calves come light and explode quickly. Banker is one of the heaviest used sires here at Coleman Angus. **These are IVF embryos (Trans Ova), we are selling three embryos in this mating and guaranteeing one pregnancy.** These embryos are exportable to Canada. These embryos have been sexed for females, 90-95% accurate.

Lot 2 – 3/6 IVF EMBRYOS

Coleman Donna 376 x Coleman Glacier 041



Coleman Donna 376
Dam of Embryos

S A V Renown 3439

Coleman Glacier 041

19866409 Coleman Donna 439

Coleman Manning 0299

Coleman Donna 376

17544050 Coleman Donna 005

CED	BW	WW	YW	MILK	SC	MARB	RE	SM
10	-0.9	56	95	28	-.12	-.20	.44	80

Bid price is per embryo. Package prices is 3/6x bid price. Buyer is responsible for cost of shipping embryos.

Online EMBRYO Auction Closes 8/29 | 7 PM (MST)

Donna 376 is the Dam of "Resource 708" 376 defines "Maternal Efficiency", no other cow on the Ranch will wean a larger percentage of her body weight than 376. 376 has a production record of BR 5/91, NR 4/103, and YR 4/102. At 10 years of age, 376 has perfect feet, perfect udder, and still is raising a heifer calf that will be a very high percentage of her body weight. We have never offered embryos for sale out of her, and don't plan on offering any in the future. If you want to get ahead of the curve pay attention here, you will see lots of progeny out of 376 in the future here. "Glacier" has been a standout since he was born. Glacier's first calves are on the ground, they are very impressive as babies. Glacier has the best feet I've ever seen on a bull before, extremely sound, and athletic, with a great herd bull look and presence. He's the bull the industry has been looking for. Glacier's flush sisters are calving this spring, and look impressive, perfect udders, great feet, stout, with a great look. We believe it all starts with the mother cow; Glacier's Pathfinder dam is the fourth consecutive generation to make it the donor



Coleman Glacier 041
Sire of Embryos

pen here. "439" has ratios of BR 5/93, NR 5/107, and YR 5/106. 439 has been a favorite of visitors here since she was a heifer calf, we've kept 4 different sons of her here that we are currently using, she would be as good as any female we've ever had the opportunity to work with here. "439" is also the Dam of Mission 1447, and Ace 989, both are doing a tremendous job for us. **These are IVF embryos (Trans Ova), we are selling three embryos in this mating and guaranteeing one pregnancy.** Buyer has the option to take six embryos out of this mating and we will guarantee 2 pregnancies. These embryos are exportable to Canada.

www.LiveAuctions.TV

Lot 3 – 3/6 IVF EMBRYOS

Coleman Donna 376 x S A V Renovation 6822



Coleman Donna 376
Dam of Embryos

S A V Renown 3439

S A V Renovation 6822

18579309

S A V Madame Pride 0151

Coleman Manning 0299

Coleman Donna 376

17544050

Coleman Donna 005

CE	BW	WW	YW	MILK	SC	MARB	RE	SM
8	0	51	90	21	.40	.18	.15	72

Bid price is per embryo. Package prices is 3/6x bid price. Buyer is responsible for cost of shipping embryos.

Online EMBRYO Auction Closes 8/29 | 7 PM (MST)

Donna 376 is the Dam of "Resource 708" 376 defines "Maternal Efficiency", no other cow on the Ranch will wean a larger percentage of her body weight than 376. 376 has a production record of BR 5/91, NR 4/103, and YR 4/102. At 10 years of age, 376 has perfect feet, perfect udder, and still is raising a heifer calf that will be a very high percentage of her body weight. We have never offered embryos for sale out of her, and don't plan on offering any in the future. If you want to get ahead of the curve pay attention here, you will see lots of progeny out of 376 in the future here. The sire of these embryos is Renovation. "Renovation" is an impressive individual with abundance of muscle, body shape, depth of rib in a modest frame size. His daughters are easy fleshing,



S A V Renovation 6822
Sire of Embryos

deep ribbed, with beautiful udders. We feel "Renovation" is one of the best and most proven Renown sons out there. Extremely good mating here for sure. **These are IVF embryos (Trans Ova), we are selling three embryos in this mating and guaranteeing one pregnancy.** Buyer has the option to take six embryos out of this mating and we will guarantee 2 pregnancies. These embryos are exportable to Canada.

www.LiveAuctions.TV

Lot 4 – 3 IVF EMBRYOS

Coleman Donna 023 x Coleman Rock 7200



Coleman Donna 023
Dam of Embryos

O C C Juneau 807J

Coleman Rock 7200

19107936 Coleman Donna 714

S A V Renown 3439

Coleman Donna 023

19857109 Coleman Donna 439

CED	BW	WW	YW	MILK	SC	MARB	RE	SM
8	0	68	119	27	.94	-.19	.88	84

Bid price is per embryo. Package prices is 3x bid price. Buyer is responsible for cost of shipping embryos.

Online EMBRYO Auction Closes 8/29 | 7 PM (MST)

“023” The flush sister to Coleman Glacier 041 the top selling bull of the 2022 spring bull sale. She is also a flush sister to Donna 046, who sold for \$120,000 for ½ interest to Ingram Angus in TN. This past summer when we were trying to pick out our favorite two sisters to Glacier, it came down to these two. “023” and “046” Jeremy was fond of “023” and I liked “046”, so we flipped a coin to see which female to put in the sale and “046” was the one. “023” is a stout made, deep bodied female, who had a beautiful udder and did a wonderful job on her first natural calf and comes in the right kind of package. Rock was the \$240,000 record selling bull in our 2022 female sale to Ingram Angus and Sandford Cattle. Demand for Rock is at an all-time high across the World right now. The cattleman’s kind is a perfect way describe the early indicators on Coleman Rock 7200. Rock would currently be one of the heaviest



Coleman Rock 7200
Sire of Embryos

used sires here at Coleman Angus. He sires cattle with extra three-dimensional shape with added performance in the right size package. His offspring have tons of center body and explosive muscle shape in a sound-structured package. Rock is low birthweight, high growth, and ranks in the Top 10% for \$M. **These are IVF embryos (Trans Ova), we are selling three embryos in this mating and guaranteeing one pregnancy.** These embryos are exportable to Canada.

www.LiveAuctions.TV

Lot 5 – 3/6 IVF EMBRYOS

Coleman Donna 023 x Charlo 0256



Coleman Donna 023
Dam of Embryos

O C C Paxton 730P

Charlo 0256

16879074

Bohi Abigale 6014

S A V Renown 3439

Coleman Donna 023

19857109

Coleman Donna 439

CED	BW	WW	YW	MILK	SC	MARB	RE	SM
8	0.1	58	105	29	.92	.07	.82	77

Bid price is per embryo. Package prices is 3/6x bid price. Buyer is responsible for cost of shipping embryos.

Online EMBRYO Auction Closes 8/29 | 7 PM (MST)

//023// The flush sister to Coleman Glacier 041 the top selling bull of the 2022 spring bull sale. She is also a flush sister to Donna 046, who sold for \$120,000 for ½ interest to Ingram Angus in TN. This past summer when we were trying to pick out our favorite two sisters to Glacier, it came down to these two. "023" and "046" Jeremy was fond of "023" and I liked "046", so we flipped a coin to see which female to put in the sale and "046" was the one. "023" is a stout made, deep bodied female, who had a beautiful udder and did a wonderful job on her first natural calf and comes in the right kind of package. No other sire in history combines proven calving-ease with his degree of thickness, fleshing-ability, and authentic Angus breed character. Charlo is a large scrotal, highly fertile sire with



Charlo 0256
Sire of Embryos

superior semen quality. Charlo was breeding naturally at 10 years of age; you can see the same qualities in the longevity of his daughters. **These are IVF embryos (Trans Ova), we are selling three embryos in this mating and guaranteeing one pregnancy.** Buyer has the option to take six embryos out of this mating and we will guarantee 2 pregnancies. These embryos are exportable to Canada.

www.LiveAuctions.TV

Lot 6 – 3/6 IVF SF F EMBRYOS

Coleman Donna 504 x Coleman Glacier 041



Coleman Donna 504
Dam of Embryos

S A V Renown 3439

Coleman Glacier 041

19866409 Coleman Donna 439

S A V Resource 1441

Coleman Donna 504

18238090 Coleman Donna 714

CED	BW	WW	YW	MILK	SC	MARB	RE	SM
10	0.5	73	134	28	.55	-.23	.80	80

Bid price is per embryo. Package prices is 3/6x bid price. Buyer is responsible for cost of shipping embryos.

Online EMBRYO Auction Closes 8/29 | 7 PM (MST)

Donna 504 has been a visitor favorite since she was a calf here. 504 has done a tremendous job here with her calves, and her progeny have been some of the favorites in our bull and female sales. Ratio's on her BR 4/89, NR 4/110, YR 3/110. 504's sons topped our 2021 bull sale, many going to registered breeders all across the US. "Glacier" has been a standout since he was born. Glacier's first calves are on the ground, they are very impressive as babies. Glacier has the best feet I've ever seen on a bull before, extremely sound, and athletic, with a great herd bull look and presence. He's the bull the industry has been looking for. Glacier's flush sisters are calving this spring, and look impressive, perfect udders, great feet, stout, with a great look. We believe it all starts with the mother cow; Glaciers Pathfinder dam is the fourth consecutive generation to make it the donor pen here. "439" has ratios of BR 5/93, NR 5/107, and YR 5/106. 439 has been a favorite of visitors here since she was a heifer calf, we've kept



Coleman Glacier 041
Sire of Embryos

4 different sons of her here that we are currently using, she would be as good as any female we've ever had the opportunity to work with here. "439" is also the Dam of Mission 1447, and Ace 989, both are doing a tremendous job for us. **These are IVF embryos (Trans Ova), we are selling three embryos in this mating and guaranteeing one pregnancy.** Buyer has the option to take six embryos out of this mating and we will guarantee 2 pregnancies. These embryos are exportable to Canada. These embryos have been sexed for females, 90-95% accurate.

www.LiveAuctions.TV

Lot 7 – 3/6 IVF EMBRYOS

Coleman Donna 504 x Coleman Below Zero 2106



Coleman Donna 504
Dam of Embryos

Sitz Stellar 726D

Coleman Below Zero 2106

20512901

Coleman Donna 0153

S A V Resource 1441

Coleman Donna 504

18238090

Coleman Donna 714

CE	BW	WW	YW	MILK	SC	MARB	RE	SM
11	-0.4	68	127	27	.83	.22	.67	82

Bid price is per embryo. Package prices is 3/6x bid price. Buyer is responsible for cost of shipping embryos.

Online EMBRYO Auction Closes 8/29 | 7 PM (MST)

Donna 504 has been a visitor favorite since she was a calf here. 504 has done a tremendous job here with her calves, and her progeny have been some of the favorites in our bull and female sales. Ratio's on her BR 4/89, NR 4/110, YR 3/110. 504's sons topped our 2021 bull sale, many going to registered breeders all across the US. Take advantage here. Coleman Below Zero 2106 was the \$150,000 top-selling bull of the 2023 Coleman Angus bull sale and selected by Janssen Angus of Iowa, Marshall Fenner Farms of Missouri, Pinewood Farms of Tennessee and GENEX BEEF AI stud. A sure shot heifer bull with exceptional phenotype, exceptional depth of body, and represents great breed character in a well-balanced number package. Coleman Donna 0153, his dam, is a great three-year-old with a beautiful udder and look. She has a



Coleman Below Zero 2106
Sire of Embryos

progeny production record of BR 1@91, WR 1@107, YR 1@104 and her dam is a full sister to Coleman Donna 8146 and Coleman Donna 4203, who is the dam of the \$150,000 Coleman Banker 9215. **These are IVF embryos (Trans Ova), we are selling three embryos in this mating and guaranteeing one pregnancy.** Buyer has the option to take six embryos out of this mating and we will guarantee 2 pregnancies.

Lot 8 – 3/6 IVF EMBRYOS

Coleman Chloe 975 x Coleman Glacier 041



Coleman Chloe 975
Dam of Embryos

S A V Renown 3439

Coleman Glacier 041

19866409 Coleman Donna 439

Coleman Bravo 6313

Coleman Chloe 975

19483324 Lawsons Chloe C815

CED	BW	WW	YW	MILK	SC	MARB	RE	SM
7	0.9	79	139	28	.60	.03	.70	71

Bid price is per embryo. Package prices is 3/6x bid price. Buyer is responsible for cost of shipping embryos.

Online EMBRYO Auction Closes 8/29 | 7 PM (MST)

“975” has been a visitor favorite since she was a calf here. “975” has 2 calves BR 6/95, NR 2/106, and YR 1/109. “975” has a Glacier heifer calf at her side now, and she is exceptional, visitors here this summer have loved her. “975” is a flush sister to Triumph, she was our high selling female in our 2019 female sale to Jocko Valley in MT. We feel she has as much potential as any female we have had the opportunity to work with here. “Glacier” has been a standout since he was born. Glacier’s first calves are on the ground, they are very impressive as babies. Glacier has the best feet I’ve ever seen on a bull before, extremely sound, and athletic, with a great herd bull look and presence. He’s the bull the industry has been looking for. Glacier’s flush sisters are calving this spring, and look impressive, perfect udders, great feet, stout, with a great look. We believe it all starts with the mother cow; Glacier’s Pathfinder dam is the fourth consecutive generation to make it the donor pen here. “439” has ratios of BR 5/93, NR 5/107, and YR 5/106. 439 has been



Coleman Glacier 041
Sire of Embryos

a favorite of visitors here since she was a heifer calf, we’ve kept 4 different sons of her here that we are currently using, she would be as good as any female we’ve ever had the opportunity to work with here. “439” is also the Dam of Mission 1447, and Ace 989, both are doing a tremendous job for us. **These are IVF embryos (Trans Ova), we are selling three embryos in this mating and guaranteeing one pregnancy.** Buyer has the option to take six embryos out of this mating and we will guarantee 2 pregnancies. These embryos are exportable to Canada.

Lot 9 – 3/6 IVF EMBRYOS

Coleman Chloe 975 x BC Robust 0807



Coleman Chloe 975
Dam of Embryos

BC Surveyor 680D

BC Robust 0807

18456252

BC 327-8 CP Belle 0-807

Coleman Bravo 6313

Coleman Chloe 975

19483324

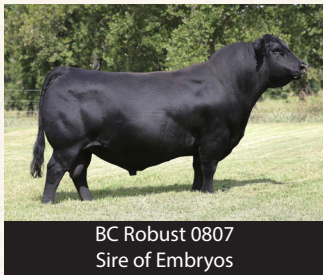
Lawsons Chloe C815

CED	BW	WW	YW	MILK	SC	MARB	RE	SM
6	1.6	74	121	18	.84	.23	.56	57

Bid price is per embryo. Package prices is 3/6x bid price. Buyer is responsible for cost of shipping embryos.

Online EMBRYO Auction Closes 8/29 | 7 PM (MST)

“975” has been a visitor favorite since she was a calf here. “975” has 2 calves BR 6/95, NR 2/106, and YR 1/109. “975” has a Glacier heifer calf at her side now, and she is exceptional, visitors here this summer have loved her. “975” is a flush sister to Triumph, she was our high selling female in our 2019 female sale to Jocko Valley in MT. We feel she has as much potential as any female we have had the opportunity to work with here. The sire of these embryos is Robust. Robust is a very balanced bull: long spined, big hipped and photogenic in a 5.5 frame; but perhaps his greatest asset is how he stands down on all four corners on as good of feet as you’ll find in an Angus bull. Big time mating here for sure. **These are IVF embryos (Trans Ova), we are selling three embryos in this mating and guaranteeing one pregnancy.** Buyer has the option to take six embryos out of this mating and we will guarantee 2 pregnancies.



BC Robust 0807
Sire of Embryos

Lot 10 – 3/6 IVF EMBRYOS

Mill Brae Iden Geroginia 4086 x Ingram Heisman 0566



Mill Brae Iden Geroginia 4086
Dam of Embryos

Connealy Confidence Plus

Ingram Heisman 0566

19958805 RB Lady Denver 167-453

Koupals B&B Identity

Mill Brae Iden Geroginia 4086

17928486 Mill Brae FA Georgina 0237

CED	BW	WW	YW	MILK	SC	MARB	RE	SM
7	0.9	80	139	35	.52	1.19	.89	88

Bid price is per embryo. Package prices is 3/6x bid price. Buyer is responsible for cost of shipping embryos.

Online EMBRYO Auction Closes 8/29 | 7 PM (MST)

4086 sold for \$210,000 for ½ interest and was the top-selling female in our recent “Your Maternal Source Sale”. 4086 is the Dam of J Trademark 1037, a featured herd sire at Coleman Angus and Conley Cattle programs. Trademark has been one of the most sought-after young herd bulls this spring, with semen selling to many of the leading registered herds across the US. 4086 has a progeny record of 6 head/103 weaning, and a calving interval of 347 on 6 head. When you combine Calving Ease, Growth, Marbling, and \$ Values, she is the #1 cow in AHIR her age or older. “4086” did this the old-fashioned way, in the pasture and through her progeny. The now deceased Ingram Heisman 0566 was the \$265,000 top-selling bull of the 2022 Ingram sale going to Double Barrel Angus and Kern Cattle. He is an extreme numbered son of Confidence Plus back to the \$300,000 record selling female at the National Finals



Ingram Heisman 0566
Sire of Embryos

sale in Las Vegas. This bull reads with exceptional growth, high carcass genetics and elite \$ values. His dam has a progeny production record of BR 1@94, UREA@102, and has 11 daughters in production with a nursing ratio of 103. **These are IVF embryos (Trans Ova), we are selling three embryos in this mating and guaranteeing one pregnancy.** Buyer has the option to take six embryos out of this mating and we will guarantee 2 pregnancies. These embryos are exportable to Canada.

www.LiveAuctions.TV

Lot 11 – 3/6 IVF SF F EMBRYOS

Mill Brae Iden Geroginia 4086 x Coleman Rock 7200



Mill Brae Iden Geroginia 4086
Dam of Embryos

O C C Juneau 807J

Coleman Rock 7200

19107936 Coleman Donna 714

Koupals B&B Identity

Mill Brae Iden Geroginia 4086

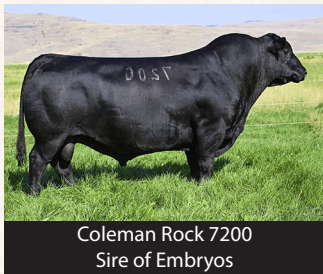
17928486 Mill Brae FA Georgina 0237

CED	BW	WW	YW	MILK	SC	MARB	RE	SM
10	-0.5	71	122	29	1.09	.44	.64	87

Bid price is per embryo. Package prices is 3/6x bid price. Buyer is responsible for cost of shipping embryos.

Online EMBRYO Auction Closes 8/29 | 7 PM (MST)

4086 sold for \$210,000 for ½ interest and was the top-selling female in our recent “Your Maternal Source Sale”. 4086 is the Dam of J Trademark 1037, a featured herd sire at Coleman Angus and Conley Cattle programs. Trademark has been one of the most sought-after young herd bulls this spring, with semen selling to many of the leading registered herds across the US. 4086 has a progeny record of 6 head/103 weaning, and a calving interval of 347 on 6 head. When you combine Calving Ease, Growth, Marbling, and \$ Values, she is the #1 cow in AHIR her age or older. “4086” did this the old-fashioned way, in the pasture and through her progeny. Rock was the \$240,000 record selling bull in our 2022 female sale to Ingram Angus and Sandford Cattle. Demand for Rock is at an all-time high across the World right now. The cattleman’s kind is a perfect way describe the early indicators on Coleman Rock 7200. Rock would currently be one of the heaviest used sires here at Coleman Angus. He sires cattle with extra three-dimensional



Coleman Rock 7200
Sire of Embryos

shape with added performance in the right size package. His offspring have tons of center body and explosive muscle shape in a sound-structured package. Rock is low birthweight, high growth, and ranks in the Top 10% for \$M. **These are IVF embryos (Trans Ova), we are selling three embryos in this mating and guaranteeing one pregnancy.** Buyer has the option to take six embryos out of this mating and we will guarantee 2 pregnancies. These embryos are exportable to Canada. These embryos have been sexed for females, 90-95% accurate.

www.LiveAuctions.TV

Lot 12 – 3/6 IVF SF F EMBRYOS

Coleman Donna 7100 x Coleman Rock 7200



Coleman Donna 7100
Dam of Embryos

O C C Juneau 807J

Coleman Rock 7200

19107936 Coleman Donna 714

S A V Resource 1441

Coleman Donna 7100

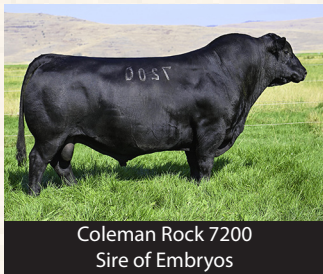
18838366 Coleman Donna 714

CED	BW	WW	YW	MILK	SC	MARB	RE	SM
9	0.8	75	131	24	1.29	-.10	.69	84

Bid price is per embryo. Package prices is 3/6x bid price. Buyer is responsible for cost of shipping embryos.

Online EMBRYO Auction Closes 8/29 | 7 PM (MST)

“7100” is a Pathfinder Female. “7100” has production records of 4/97 for BR, 4/110 NR, and 3/109 YR. “7100” has one of the best sets of ET calves here this spring, she’s making here mark here! “7100” is the dam of our herd bull “Logo 947”, that Little Goose Ranch in WY bought spring possession from us in our 2020 bull sale. First calves this spring out of “947” look incredibly good. “7100” has been extremely productive here for us, we are excited to be partners with Shady Brook in TN on this tremendous young female. “7100” has another herd bull in the making on her right now, she is extremely long, tons of power, excellent udder. I feel she is one of the really good young females on the ranch here. Rock was the \$240,000 record selling bull in our 2022 female sale to Ingram Angus and Sandford Cattle. Demand for Rock is at an all-time high across the World right now. The cattleman’s kind is a perfect way describe the early indicators on Coleman Rock 7200. Rock would currently be one of the heaviest used sires here at Coleman Angus. He sires cattle with extra



Coleman Rock 7200
Sire of Embryos

three-dimensional shape with added performance in the right size package. His offspring have tons of center body and explosive muscle shape in a sound-structured package. Rock is low birthweight, high growth, and ranks in the Top 10% for \$M. **These are IVF embryos (Trans Ova), we are selling three embryos in this mating and guaranteeing one pregnancy.** Buyer has the option to take six embryos out of this mating and we will guarantee 2 pregnancies. These embryos are exportable to Canada. These embryos have been sexed for females, 90-95% accurate.

Lot 13 – 3/6 IVF EMBRYOS

Coleman Donna 7100 x Hummel Argentine



Coleman Donna 7100
Dam of Embryos

Don Aparicio Serrucho57 Maxi

Hummel Argentine

19919948

Rubeta Fontana 7567-T/E-

S A V Resource 1441

Coleman Donna 7100

18838366

Coleman Donna 714

CEW	BW	WW	YW	MILK	SC	MARB	RE	SM
9	0.2	59	106	21	.24	.00	.52	66

Bid price is per embryo. Package prices is 3/6x bid price. Buyer is responsible for cost of shipping embryos.

Online EMBRYO Auction Closes 8/29 | 7 PM (MST)

“7100” is a Pathfinder Female. “7100” has production records of 4/97 for BR, 4/110 NR, and 3/109 YR. “7100” has one of the best sets of ET calves here this spring, she’s making here mark here! “7100” is the dam of our herd bull “Logo 947”, that Little Goose Ranch in WY bought spring possession from us in our 2020 bull sale. First calves this spring out of “947” look incredibly good. “7100” has been extremely productive here for us, we are excited to be partners with Shady Brook in TN on this tremendous young female. “7100” has another herd bull in the making on her right now, she is extremely long, tons of power, excellent udder. I feel she is one of the really good young females on the ranch here. Argentine and his full brothers were the most talked about bulls at the Cattleman’s Congress in Oklahoma City, Oklahoma. His full brother South America was the \$180,000 one – half interest



Hummel Argentine
Sire of Embryos

top selling lot of the Night at Remington Park in 2021. Argentine is an attractive bull that has tremendous eye appeal, balance, length, and a great foot. He has the ability to make outcross cattle that are fault free and are high quality. **These are IVF embryos (Trans Ova), we are selling three embryos in this mating and guaranteeing one pregnancy.** Buyer has the option to take six embryos out of this mating and we will guarantee 2 pregnancies.

Lot 14 – 3/6 IVF SF F EMBRYOS

Coleman Donna 040 x Coleman Glacier 041



Coleman Donna 040
Dam of Embryos

S A V Renown 3439

Coleman Glacier 041

19866409 Coleman Donna 439

O C C Juneau 807J

Coleman Donna 040

16584279 Coleman Donna 714

CED	BW	WW	YW	MILK	SC	MARB	RE	SM
9	-0.4	71	118	31	.26	-.14	.84	99

Bid price is per embryo. Package prices is 3/6x bid price. Buyer is responsible for cost of shipping embryos.

Online EMBRYO Auction Closes 8/29 | 7 PM (MST)

“040” is a pathfinder female, BR 7/98 NR of 107 and YR of 109 on her calves. This female is the #1 \$M cow in the breed who has Pathfinder status and is 13 years old. This represents maternal, production, fertility, and longevity. “040” is 11 years old, and is currently nursing another calf, still perfect feet, and very sound. “040” is a flush sister to Donna 063, who was the high selling female in one of our past female sales, Juneau 044, and Manning 0299 and Rock 7200. All four of these individuals have had a tremendous impact on our program. “040” is a moderate framed, extremely stout, long bodied female that we are using in our program extremely hard. “Glacier” has been a standout since he was born. Glacier’s first calves are on the ground, they are very impressive as babies. Glacier has the best feet I’ve ever seen on a bull before, extremely sound, and athletic, with a great herd bull look and presence. He’s the bull the industry has been looking for. Glacier’s flush sisters are calving this spring, and look impressive, perfect udders, great feet, stout, with a great look. We believe it all starts with the mother cow; Glaciers Pathfinder dam is the fourth consecutive generation to make it the donor pen here. “439” has ratios of BR 5/93, NR



Coleman Glacier 041
Sire of Embryos

5/107, and YR 5/106. 439 has been a favorite of visitors here since she was a heifer calf, we’ve kept 4 different sons of her here that we are currently using, she would be as good as any female we’ve ever had the opportunity to work with here. “439” is also the Dam of Mission 1447, and Ace 989, both are doing a tremendous job for us. **These are IVF embryos (Trans Ova), we are selling three embryos in this mating and guaranteeing one pregnancy.** Buyer has the option to take six embryos out of this mating and we will guarantee 2 pregnancies. These embryos are exportable to Canada. These embryos have been sexed for females, 90-95% accurate.

Lot 15 – 3/6 IVF EMBRYOS

Coleman Donna 040 x S A V Renovation 6822


COLEMAN ANGUS
YOUR MATERNAL SOURCE



Coleman Donna 040
Dam of Embryos

S A V Renown 3439

S A V Renovation 6822

18579309

S A V Madame Pride 0151

O C C Juneau 807J

Coleman Donna 040

16584279

Coleman Donna 714

CED	BW	WW	YW	MILK	SC	MARB	RE	SM
8	0.4	66	112	24	.78	.24	.55	91

Bid price is per embryo. Package prices is 3/6x bid price. Buyer is responsible for cost of shipping embryos.

Online EMBRYO Auction Closes 8/29 | 7 PM (MST)

“040” is a pathfinder female, BR 7/98 NR of 107 and YR of 109 on her calves. This female is the #1 \$M cow in the breed who has Pathfinder status and is 13 years old. This represents maternal, production, fertility, and longevity. “040” is 11 years old, and is currently nursing another calf, still perfect feet, and very sound. “040” is a flush sister to Donna 063, who was the high selling female in one of our past female sales, Juneau 044, and Manning 0299 and Rock 7200. All four of these individuals have had a tremendous impact on our program. “040” is a moderate framed, extremely stout, long bodied female that we are using in our program extremely hard. The sire of these embryos is Renovation. “Renovation” is an impressive individual with abundance of muscle, body shape, depth of rib in a modest frame size. His



S A V Renovation 6822
Sire of Embryos

daughters are easy fleshing, deep ribbed, with beautiful udders. We feel “Renovation” is one of the best and most proven Renown sons out there. Extremely good mating here for sure. **These are IVF embryos (Trans Ova), we are selling three embryos in this mating and guaranteeing one pregnancy.** Buyer has the option to take six embryos out of this mating and we will guarantee 2 pregnancies. These embryos are exportable to Canada.

www.LiveAuctions.TV

Lot 16 – 3/6 IVF EMBRYOS

Coleman Miss Wix 0204 x Coleman Resource 708



Coleman Miss Wix 0204
Dam of Embryos

S A V Resource 1441

Coleman Resource 708

18933681

Coleman Donna 376

Coleman Alliance 6156

Coleman Miss Wix 0204

16879054

Coleman Miss Wix 7138

CED	BW	WW	YW	MILK	SC	MARB	RE	SM
7	0.3	50	93	28	.40	.21	.38	59

Bid price is per embryo. Package prices is 3/6x bid price. Buyer is responsible for cost of shipping embryos.

Online EMBRYO Auction Closes 8/29 | 7 PM (MST)

“0204” is a pathfinder female that has proven herself in the pasture. “0204” had a calving interval of 357 on her first 8 calves before we pulled her out of production to flush her. “0204” has a BR of 9/100, NR 9/109 and YR 9/107. Exceptionally good cow here, excellent udder, disposition, feet, really can’t pick on her. “0204” never misses. “0204” is currently 13 years old, has a great calf at her side again, pretty special female here. Sire of these embryos is a bull that has become known as “708” here at Coleman Angus. “708” reminds me of the early days when bulls proved themselves in the pasture one calf at a time, and everyone started calling them by their tattoo. “708” has been a visitor favorite here at the Ranch. We bred him to a bunch of females and have been flushing him to our top donors. Get on board with “708” he’s the real deal, proving himself the old-fashioned way, one great daughter at a time. “708” is the first bull in the history of our program that we went and bought back to use in the program. We’ve watched “708”



Coleman Resource 708
Sire of Embryos

and his progeny since we sold “708” to Gaugler Angus in MT. “708’s” 10-year-old Dam is a fourth-generation donor here for us, perfect feet, perfect udder, moderate, very maternal. “708” has perfect feet also, his daughters have perfect feet and udders, extremely fertile, raise big calves and breed back early. **These are IVF embryos (Trans Ova), we are selling three embryos in this mating and guaranteeing one pregnancy.** Buyer has the option to take six embryos out of this mating and we will guarantee 2 pregnancies. These embryos are exportable to Canada.

Lot 17 – 3/6 IVF EMBRYOS

Coleman Miss Wix 0204 x S A V Renovation 6822



Coleman Miss Wix 0204
Dam of Embryos

S A V Renown 3439

S A V Renovation 6822

18579309 S A V Madame Pride 0151

Coleman Alliance 6156

Coleman Miss Wix 0204

16879054 Coleman Miss Wix 7138

CED	BW	WW	YW	MILK	SC	MARB	RE	SM
4	1.8	56	104	24	.93	.36	.16	58

Bid price is per embryo. Package prices is 3/6x bid price. Buyer is responsible for cost of shipping embryos.

Online EMBRYO Auction Closes 8/29 | 7 PM (MST)

“0204” is a pathfinder female that has proven herself in the pasture. “0204” had a calving interval of 357 on her first 8 calves before we pulled her out of production to flush her. “0204” has a BR of 9/100, NR 9/109 and YR 9/107. Exceptionally good cow here, excellent udder, disposition, feet, really can’t pick on her. “0204” never misses. “0204” is currently 13 years old, has a great calf at her side again, pretty special female here. The sire of these embryos is Renovation. “Renovation” is an impressive individual with abundance of muscle, body shape, depth of rib in a modest frame size. His daughters are easy fleshing, deep ribbed, with beautiful udders. We feel “Renovation” is one of the best and most proven Renown sons out there. Extremely good



S A V Renovation 6822
Sire of Embryos

mating here for sure. **These are IVF embryos (Trans Ova), we are selling three embryos in this mating and guaranteeing one pregnancy.** Buyer has the option to take six embryos out of this mating and we will guarantee 2 pregnancies. These embryos are exportable to Canada.

Lot 18 – 3/6 IVF SF F EMBRYOS

Coleman Donna 928 x Coleman Resource 708



Coleman Donna 928
Dam of Embryos

S A V Resource 1441

Coleman Resource 708

18933681 Coleman Donna 376

SITZ Logo 12964

Coleman Donna 928

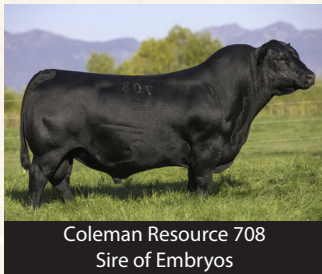
19544172 Coleman Donna 787

CED	BW	WW	YW	MILK	SC	MARB	RE	SM
10	-1.4	56	92	28	.97	.16	.48	93

Bid price is per embryo. Package prices is 3/6x bid price. Buyer is responsible for cost of shipping embryos.

Online EMBRYO Auction Closes 8/29 | 7 PM (MST)

//928" has production records of Br 2/95, NR 2/110. "928" was our high selling bred heifer in our 2020 female sale. Her Dam, "787" is a cow we refer to as the "Sleeping Giant" here, she has become very dominant, and a visitor favorite here. We are excited to be able to get "928" back here in the program, and immediately she entered into our Donor program. "928" was a visitor favorite all summer back in 2020, and we're fortunate to be able to add her back to our program. When she calves, she will take an exceptional picture. Big time mating here! Sire of these embryos is a bull that has become known as "708" here at Coleman Angus. "708" reminds me of the early days when bulls proved themselves in the pasture one calf at a time, and everyone started calling them by their tattoo. "708" has been a visitor favorite here at the Ranch. We bred him to a bunch of females and have been flushing him to our top donors. Get on board with "708" he's the real deal, proving himself the old-fashioned way, one great daughter at a time. "708" is the first bull in the history of our program that we went and bought back to use in the program. We've watched "708" and



Coleman Resource 708
Sire of Embryos

his progeny since we sold "708" to Gaugler Angus in MT. "708's" 10-year-old Dam is a fourth-generation donor here for us, perfect feet, perfect udder, moderate, very maternal. "708" has perfect feet also, his daughters have perfect feet and udders, extremely fertile, raise big calves and breed back early. **These are IVF embryos (Trans Ova), we are selling three embryos in this mating and guaranteeing one pregnancy.** Buyer has the option to take six embryos out of this mating and we will guarantee 2 pregnancies. These embryos are exportable to Canada. These embryos have been sexed for females, 90-95% accurate.

Lot 19 – 3/6 IVF EMBRYOS

Coleman Donna 928 x S A V Renovation 6822



Coleman Donna 928
Dam of Embryos

S A V Renown 3439

S A V Renovation 6822

18579309 S A V Madame Pride 0151

SITZ Logo 12964

Coleman Donna 928

19544172 Coleman Donna 787

CED	BW	WW	YW	MILK	SC	MARB	RE	SM
7	0.1	61	103	24	1.50	.31	.25	92

Bid price is per embryo. Package prices is 3/6x bid price. Buyer is responsible for cost of shipping embryos.

Online EMBRYO Auction Closes 8/29 | 7 PM (MST)

“928” has production records of Br 2/95, NR 2/110. “928” was our high selling bred heifer in our 2020 female sale. Her Dam, “787” is a cow we refer to as the “Sleeping Giant” here, she has become very dominant, and a visitor favorite here. We are excited to be able to get “928” back here in the program, and immediately she entered into our Donor program. “928” was a visitor favorite all summer back in 2020, and we’re fortunate to be able to add her back to our program. When she calves, she will take an exceptional picture. Big time mating here! The sire of these embryos is Renovation. “Renovation” is an impressive individual with abundance of muscle, body shape, depth of rib in a modest frame size. His daughters are easy fleshing, deep ribbed,



S A V Renovation 6822
Sire of Embryos

with beautiful udders. We feel “Renovation” is one of the best and most proven Renown sons out there. Extremely good mating here for sure. **These are IVF embryos (Trans Ova), we are selling three embryos in this mating and guaranteeing one pregnancy.** Buyer has the option to take six embryos out of this mating and we will guarantee 2 pregnancies. These embryos are exportable to Canada.

www.LiveAuctions.TV

Lot 20 – 3/6 IVF SF F EMBRYOS

Coleman Donna 9220 x Coleman Rock 7200



Coleman Donna 9220
Dam of Embryos

O C C Juneau 807J

Coleman Rock 7200

19107936 Coleman Donna 714

S A V Resource 1441

Coleman Donna 9220

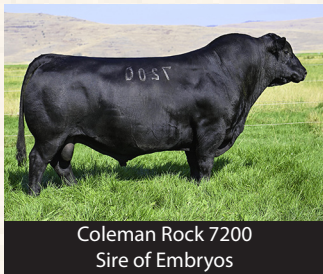
19717715 Coleman Donna 4203

CE	BW	WW	YW	MILK	SC	MARB	RE	SM
10	-0.1	70	125	28	1.04	-.11	.81	80

Bid price is per embryo. Package prices is 3/6x bid price. Buyer is responsible for cost of shipping embryos.

Online EMBRYO Auction Closes 8/29 | 7 PM (MST)

Coleman Donna 9220 – The definition of what you want your two-year-old females to look like is this daughter of SAV Resource 1441, back to the now deceased Coleman Donna 4203. This was our lot 1 female this past fall and we sold one-half interest for \$45,000 for a \$90,000 valuation. She ranks among current dams as the 14th highest daughter of Resource for \$M for non-parent females in the breed. Coleman Banker, a maternal brother, was the \$75,000 feature in the same sale and two other maternal sisters sold for \$22,000 and \$22,500. Another maternal sister sold in the 2020 sale for \$20,000. Rock was the \$240,000 record selling bull in our 2022 female sale to Ingram Angus and Sandford Cattle. Demand for Rock is at an all-time high across the World right now. The cattleman's kind is a perfect way describe the early indicators on Coleman Rock 7200. Rock would currently be one of the heaviest used sires here at Coleman Angus. He sires cattle with extra three-dimensional shape with added



Coleman Rock 7200
Sire of Embryos

performance in the right size package. His offspring have tons of center body and explosive muscle shape in a sound-structured package. Rock is low birthweight, high growth, and ranks in the Top 10% for \$M. **These are IVF embryos (Trans Ova), we are selling three embryos in this mating and guaranteeing one pregnancy.** Buyer has the option to take six embryos out of this mating and we will guarantee 2 pregnancies. These embryos are exportable to Canada. These embryos have been sexed for females, 90-95% accurate.

www.LiveAuctions.TV

Lot 21 – 3/6 IVF EMBRYOS

Coleman Donna 9220 x S A V 004 Density 4336



Coleman Donna 9220
Dam of Embryos

S A V 8180 Traveler 004

S A V 004 Density 4336

14725035 S A V May 7238

S A V Resource 1441

Coleman Donna 9220

19717715 Coleman Donna 4203

CED	BW	WW	YW	MILK	SC	MARB	RE	SM
8	2.1	59	108	26	.67	.08	.79	61

Bid price is per embryo. Package prices is 3/6x bid price. Buyer is responsible for cost of shipping embryos.

Online EMBRYO Auction Closes 8/29 | 7 PM (MST)

Coleman Donna 9220 – The definition of what you want your two-year-old females to look like is this daughter of SAV Resource 1441, back to the now deceased Coleman Donna 4203. This was our lot 1 female this past fall and we sold one-half interest for \$45,000 for a \$90,000 valuation. She ranks among current dams as the 14th highest daughter of Resource for \$M for non-parent females in the breed. Coleman Banker, a maternal brother, was the \$75,000 feature in the same sale and two other maternal sisters sold for \$22,000 and \$22,500. Another maternal sister sold in the 2020 sale for \$20,000. Density needs no introduction; he's considered one of the top-female producing sires the breed has ever known. The daughters resulting from this mating will be extremely special. **These are IVF embryos (Trans Ova), we are selling three embryos in this mating and guaranteeing one pregnancy.** Buyer has the option to take six embryos out of this mating and we will guarantee 2 pregnancies. These embryos are exportable to Canada.



S A V 004 Density 4336
Sire of Embryos

Lot 22 – 3/6 IVF SF F EMBRYOS

Coleman Everelda Entense 2406 x Charlo 0256



Coleman Everelda Entense 2406
Dam of Embryos

OCC Paxton 730P

Charlo 0256

16879074

Bohi Abigale 6014

Coleman Juneau 044

Coleman Everelda Entense 2406

17544770

BT Everelda Entense 613L

CED	BW	WW	YW	MILK	SC	MARB	RE	SM
10	0	48	83	33	.87	.07	.45	79

Bid price is per embryo. Package prices is 3/6x bid price. Buyer is responsible for cost of shipping embryos.

Online EMBRYO Auction Closes 8/29 | 7 PM (MST)

Coleman Everelda Entense 2406 - This Pathfinder donor female is a direct daughter of Coleman Juneau 044 and back to the foundation Everelda Entense in our program, BT Everelda Entense 613L. Everelda Entense 2406 is a flat-out producer, as she records a progeny production record of BR 9/94, WR 9/109, YR 7/105, and IMF 2/110, with a calving interval of 9/365. Ingram Everelda Entense 7621, a daughter, sold one-half interest for \$40,000 for a \$80,000 valuation in the 2021 fall production sale at Ingram Angus. Through that same event she produced the top selling bull at \$37,000 one-half interest for a \$74,000 valuation, Ingram Intensity 0300. Charlo is one of the most influential Pathfinder sires the breed has ever known. No other sire in history combines proven calving-ease with his degree of thickness, fleshing-ability, and authentic Angus breed character. Charlo is a large scrotal, highly fertile



Charlo 0256
Sire of Embryos

sire with superior semen quality. Charlo was breeding naturally at 10 years of age; you can see the same qualities in the longevity of his daughters. **These are IVF embryos (Trans Ova), we are selling three embryos in this mating and guaranteeing one pregnancy.** Buyer has the option to take six embryos out of this mating and we will guarantee 2 pregnancies. These embryos are exportable to Canada. These embryos have been sexed for females, 90-95% accurate.

www.LiveAuctions.TV

Lot 23 – 3/6 IVF EMBRYOS

Coleman Everelda Entense 2406 x Coleman Banker 9215



Coleman Everelda Entense 2406
Dam of Embryos

Coleman Bravo 6313

Coleman Banker 9215

19583404

Coleman Donna 4203

Coleman Juneau 044

Coleman Everelda Entense 2406

17544770

BT Everelda Entense 613L

CED	BW	WW	YW	MILK	SC	MARB	RE	SM
13	-0.9	87	99	36	.46	.07	.39	94

Bid price is per embryo. Package prices is 3/6x bid price. Buyer is responsible for cost of shipping embryos.

Online EMBRYO Auction Closes 8/29 | 7 PM (MST)

Coleman Everelda Entense 2406 - This Pathfinder donor female is a direct daughter of Coleman Juneau 044 and back to the foundation Everelda Entense in our program, BT Everelda Entense 613L. Everelda Entense 2406 is a flat-out producer, as she records a progeny production record of BR 9/94, WR 9/109, YR 7/105, and IMF 2/110, with a calving interval of 9/365. Ingram Everelda Entense 7621, a daughter, sold one-half interest for \$40,000 for a \$80,000 valuation in the 2021 fall production sale at Ingram Angus. Through that same event she produced the top selling bull at \$37,000 one-half interest for a \$74,000 valuation, Ingram Intensity 0300. These embryos are sired by the now deceased "Banker" who is a bull we kept to use in our program, visitors have loved him here this summer. "Banker" is extremely impressive, exceptionally smooth, extremely sound on the move, stout, with about as much rib shape and depth as you can put in one. Banker's flush sisters that calved here



Coleman Banker 9215
Sire of Embryos

this summer are as impressive as anything we have ever calved here. We have plugged Banker in here extremely hard, Banker's first calves are very impressive. Calves come light and explode quickly. Banker is one of the heaviest used sires here at Coleman Angus. **These are IVF embryos (Trans Ova), we are selling three embryos in this mating and guaranteeing one pregnancy.** Buyer has the option to take six embryos out of this mating and we will guarantee 2 pregnancies. These embryos are exportable to Canada.

www.LiveAuctions.TV

Lot 24 – 3/6 IVF EMBRYOS

Coleman Donna 197 x Coleman Resolve 7219



Coleman Donna 197
Dam of Embryos

S A V Renown 3439

Coleman Resolve 7219

19102305 Coleman Donna 714

Basin Rainmaker 654X

Coleman Donna 197

17188528 KMK Donna J311

CED	BW	WW	YW	MILK	SC	MARB	RE	SM
7	1	56	104	32	.27	-.16	.63	81

Bid price is per embryo. Package prices is 3/6x bid price. Buyer is responsible for cost of shipping embryos.

Online EMBRYO Auction Closes 8/29 | 7 PM (MST)

Coleman Donna 197 is a direct daughter of the historic Rainmaker 654X. 197 has established herself as one of the all-time great donor females in the Coleman Angus program. She is a full sister to the \$200,000 valued Coleman Donna 386, who has been a staple at the Coleman Angus ranch for a number of years and stems back to the \$60,000 KMK Donna J311. Her actual production records are through the roof, with daughters also in production with an average nursing ratio of 108! 197 is a picture perfect, ideal Angus cow that has tremendous depth of body, a beautiful udder, with plenty of thickness. She is loaded with breed character along with extreme maternal. The sire of these embryos is Coleman Resolve 7219. Resolve has done a wonderful job for the program. 7219 will add length, quiet disposition's, add depth of body, overall mass in a very sound functional package. We sold two flush sisters to these



Coleman Resolve 7219
Sire of Embryos

embryos last year in our female sale, and they were definitely crowd favorites, with one selling for \$33,000 and another one for \$27,000. Some of the very last embryos we have out of Donna 197, pay attention here. **These are IVF embryos (Trans Ova), we are selling three embryos in this mating and guaranteeing one pregnancy.** Buyer has the option to take six embryos out of this mating and we will guarantee 2 pregnancies. These embryos are exportable to Canada.

www.LiveAuctions.TV

Lot 25 – 3/6 IVF SF F EMBRYOS

Coleman Donna 0298 x Coleman Glacier 041



Coleman Donna 0298
Dam of Embryos

S A V Renown 3439

Coleman Glacier 041

19866409 Coleman Donna 439

O C C Juneau 807J

Coleman Donna 0298

16880258 Coleman Donna 732

CED	BW	WW	YW	MILK	SC	MARB	RE	SM
5	1.2	68	117	32	.30	-.29	.60	78

Bid price is per embryo. Package prices is 3/6x bid price. Buyer is responsible for cost of shipping embryos.

Online EMBRYO Auction Closes 8/29 | 7 PM (MST)

“0298” is part of one of the greatest flushes we have had here, she is a flush sister to Donna 0308.

Donna 0298 is a pathfinder cow, calving interval of 371 days on her first 7 calves, BR 8@ 98, NR 8/108, and YR 7/106. 0298 is 13 years-old and has an excellent calf on her side again this spring, extremely stout cow, tons of power in her. Extremely hard to flush them after calving and have them breed back each year on time. 0298, is a full sister in blood to Rock, Juneau 044, and Manning. 0298 has a tremendous amount of rib shape, muscle, power, and length. She is one of the best females we have ever had here. “Glacier” has been a standout since he was born. Glacier’s first calves are on the ground, they are very impressive as babies. Glacier has the best feet I’ve ever seen on a bull before, extremely sound, and athletic, with a great herd bull look and presence. He’s the bull the industry has been looking for. Glacier’s flush sisters are calving this spring, and look impressive, perfect udders, great feet, stout, with a great look. We believe it all starts with the mother cow; Glaciers Pathfinder dam is the fourth consecutive generation to make it the donor pen here. “439” has ratios of BR 5/93, NR 5/107, and YR 5/106. 439 has been a favorite of visitors here since she



Coleman Glacier 041
Sire of Embryos

was a heifer calf, we’ve kept 4 different sons of her here that we are currently using, she would be as good as any female we’ve ever had the opportunity to work with here. “439” is also the Dam of Mission 1447, and Ace 989, both are doing a tremendous job for us. **These are IVF embryos (Trans Ova), we are selling three embryos in this mating and guaranteeing one pregnancy.** Buyer has the option to take six embryos out of this mating and we will guarantee 2 pregnancies. These embryos are exportable to Canada. These embryos have been sexed for females, 90-95% accurate.

Lot 26 – 3 IVF SF F EMBRYOS

Coleman Donna 1234 x Coleman Rock 7200



Coleman Donna 1234
Dam of Embryos

O C C Juneau 807J

Coleman Rock 7200

19107936 Coleman Donna 714

N Bar Emulation EXT

Coleman Donna 1234

17185287 Coleman Donna 714

CE	BW	WW	YW	MILK	SC	MARB	RE	SM
12	-0.9	59	98	27	.67	.02	.52	85

Bid price is per embryo. Package prices is 3x bid price. Buyer is responsible for cost of shipping embryos.

Online EMBRYO Auction Closes 8/29 | 7 PM (MST)

Donna 1234 is an incredibly special female, she has BR 6/90, NR 6/104 and YR 5/102. 1234 is now 11 years old, tremendous longevity, we've got lots of daughters out of her in production here, they are working very well for us. Some of the very last embryos we will be selling out of her. "1234" is picture perfect to look at. She has a Charlo daughter that weaned her first calf, and she is impressive. Donna 1234 has a calving interval of 353 days on her first 3 calves. Big time mating here! Rock was the \$240,000 record selling bull in our 2022 female sale to Ingram Angus and Sandford Cattle. Demand for Rock is at an all-time high across the World right now. The cattleman's kind is a perfect way describe the early indicators on Coleman Rock 7200. Rock would currently be one of the heaviest used sires here at Coleman Angus. He sires cattle with extra three-dimensional shape



Coleman Rock 7200
Sire of Embryos

with added performance in the right size package. His offspring have tons of center body and explosive muscle shape in a sound-structured package. Rock is low birthweight, high growth, and ranks in the Top 10% for \$M. **These are IVF embryos (Trans Ova), we are selling three embryos in this mating and guaranteeing one pregnancy.** These embryos are exportable to Canada. These embryos have been sexed for females, 90-95% accurate.

Lot 27 – 3/6 IVF EMBRYOS

Coleman Donna 1234 x Coleman Glacier 041



Coleman Donna 1234
Dam of Embryos

S A V Renown 3439

Coleman Glacier 041

19866409 Coleman Donna 439

N Bar Emulation EXT

Coleman Donna 1234

17185287 Coleman Donna 714

CED	BW	WW	YW	MILK	SC	MARB	RE	SM
10	-0.4	62	103	30	.05	-.11	.56	85

Bid price is per embryo. Package prices is 3/6x bid price. Buyer is responsible for cost of shipping embryos.

Online EMBRYO Auction Closes 8/29 | 7 PM (MST)

Donna 1234 is an incredibly special female, she has BR 6/90, NR 6/104 and YR 5/102. 1234 is now 11 years old, tremendous longevity, we've got lots of daughters out of her in production here, they are working very well for us. Some of the very last embryos we will be selling out of her. "1234" is picture perfect to look at. She has a Charlo daughter that weaned her first calf, and she is impressive. Donna 1234 has a calving interval of 353 days on her first 3 calves. Big time mating here! "Glacier" has been a standout since he was born. Glacier's first calves are on the ground, they are very impressive as babies. Glacier has the best feet I've ever seen on a bull before, extremely sound, and athletic, with a great herd bull look and presence. He's the bull the industry has been looking for. Glacier's flush sisters are calving this spring, and look impressive, perfect udders, great feet, stout, with a great look. We believe it all starts with the mother cow; Glaciers Pathfinder dam is the fourth consecutive generation to make it the donor pen here. "439" has ratios of BR 5/93, NR 5/107, and YR 5/106. 439 has



Coleman Glacier 041
Sire of Embryos

been a favorite of visitors here since she was a heifer calf, we've kept 4 different sons of her here that we are currently using, she would be as good as any female we've ever had the opportunity to work with here. "439" is also the Dam of Mission 1447, and Ace 989, both are doing a tremendous job for us. **These are IVF embryos (Trans Ova), we are selling three embryos in this mating and guaranteeing one pregnancy.** Buyer has the option to take six embryos out of this mating and we will guarantee 2 pregnancies. These embryos are exportable to Canada.

Lot 28 – 3 IVF SF F EMBRYOS

Coleman Everelda Entense 2321 x Coleman Rock 7200



Coleman Everelda Entense 2321
Dam of Embryos

OCC Juneau 807J

Coleman Rock 7200

19107936 Coleman Donna 714

Basin Rainmaker 654X

Coleman Everelda Entense 2321

17702924 Coleman Everelda Entense 578

CED	BW	WW	YW	MILK	SC	MARB	RE	SM
6	-0.1	54	97	34	.75	.11	.47	62

Bid price is per embryo. Package prices is 3x bid price. Buyer is responsible for cost of shipping embryos.

Online EMBRYO Auction Closes 8/29 | 7 PM (MST)

“2321” is part of a great flush here, she has a calving interval of 354 days on her first 3 calves, before we pulled her out of production and started flushing her. “2321” is a Pathfinder female, who has a BR 6/101, NR 6/109 and YR 6/107. 2321 is 11 years old and has a calf on her again this spring. Incredibly unique pedigree, maternal. Visitors here have loved her and her sisters. This will be an excellent mating. We don’t sell many embryos out of “2321”, she will be a big part of our program in the future. Rock was the \$240,000 record selling bull in our 2022 female sale to Ingram Angus and Sandford Cattle. Demand for Rock is at an all-time high across the World right now. The cattleman’s kind is a perfect way describe the early indicators on Coleman Rock 7200. Rock would currently be one of the heaviest used sires here at Coleman Angus. He sires cattle with extra three-



Coleman Rock 7200
Sire of Embryos

dimensional shape with added performance in the right size package. His offspring have tons of center body and explosive muscle shape in a sound-structured package. Rock is low birthweight, high growth, and ranks in the Top 10% for \$M. **These are IVF embryos (Trans Ova), we are selling three embryos in this mating and guaranteeing one pregnancy.** These embryos are exportable to Canada. These embryos have been sexed for females, 90-95% accurate.

www.LiveAuctions.TV

Lot 29 – 2/4 Normal EMBRYOS

Coleman Everelda Entense 2321 x Charlo 0256



Coleman Everelda Entense 2321
Dam of Embryos

OCC Paxton 730P

Charlo 0256

16879074

Bohi Abigale 6014

Basin Rainmaker 654X

Coleman Everelda Entense 2321

17702924

Coleman Everelda Entense 578

CED	BW	WW	YW	MILK	SC	MARB	RE	SM
6	0	44	83	36	.73	.11	.41	55

Bid price is per embryo. Package prices is 2/4x bid price. Buyer is responsible for cost of shipping embryos.

Online EMBRYO Auction Closes 8/29 | 7 PM (MST)

“2321” is part of a great flush here, she has a calving interval of 354 days on her first 3 calves, before we pulled her out of production and started flushing her. “2321” is a Pathfinder female, who has a BR 6/101, NR 6/109 and YR 6/107. 2321 is 11 years old and has a calf on her again this spring. Incredibly unique pedigree, maternal. Visitors here have loved her and her sisters. This will be an excellent mating. We don’t sell many embryos out of “2321”, she will be a big part of our program in the future. No other sire in history combines proven calving-ease with his degree of thickness, fleshing-ability, and authentic Angus breed character. Charlo is a large scrotal, highly fertile sire with superior semen quality. Charlo was breeding naturally at 10



Charlo 0256
Sire of Embryos

years of age; you can see the same qualities in the longevity of his daughters. **These are Conventional embryos, we are selling two embryos in this mating and guaranteeing one pregnancy.** Buyer has the option to take four embryos out of this mating and we will guarantee 2 pregnancies.

Lot 30 – 3 IVF SF F EMBRYOS

Coleman Donna 7232 x Coleman Poncho 9426



Coleman Donna 7232
Dam of Embryos

Coleman Charlo 0256

Coleman Poncho 9426

19583445 Coleman Donna 7221

S A V Resource 1441

Coleman Donna 7232

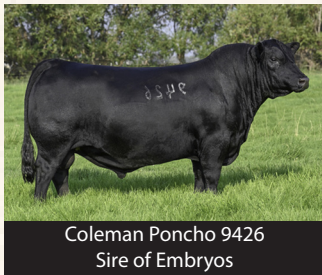
19110860 Coleman Donna 714

CE	BW	WW	YW	MILK	SC	MARB	RE	SM
7	0.5	67	120	24	1.00	.21	.80	80

Bid price is per embryo. Package prices is 3x bid price. Buyer is responsible for cost of shipping embryos.

Online EMBRYO Auction Closes 8/29 | 7 PM (MST)

“7232” has production records of BR 3/96, NR 3/107, and YR 2/106. She has a tremendous herd bull on her now from our summer calving group. “7232” is throwing a tremendous amount of performance in her progeny, she has the power to change one! “7232” is extremely long, big hipped, with a beautiful udder. This Resource X Donna 714 cross has been one of the best we have ever made here. “7232” has the potential to make a big time “Herd Bull”. Big time mating here! “Poncho” is one of the most unique bulls we have ever made here, he is another bull we kept to use here in the program. “Poncho” was the high selling bull in our 2021 Female sale, and his first calves are extremely good. “Poncho” is a “changer” for sure, we feel he has even got more muscle and power than his sire did at



Coleman Poncho 9426
Sire of Embryos

this age. Visitors here have loved him; semen demand has been worldwide on him so far. Some of the leading purebred operations have bred to him this spring. Overly excited for this mating here. **These are IVF embryos (Trans Ova), we are selling three embryos in this mating and guaranteeing one pregnancy.** These embryos are exportable to Canada. These embryos have been sexed for females, 90-95% accurate.

www.LiveAuctions.TV

Lot 31 – 3 IVF EMBRYOS

Coleman Donna 7232 x Coleman Patron 269



Coleman Donna 7232
Dam of Embryos

Hummel South America

Coleman Patron 269

20503514

Coleman Donna 5247

S A V Resource 1441

Coleman Donna 7232

19110860

Coleman Donna 714

CE	BW	WW	YW	MILK	SC	MARB	RE	SM
4	2.5	75	133	19	.92	.15	.84	64

Bid price is per embryo. Package prices is 3x bid price. Buyer is responsible for cost of shipping embryos.

Online EMBRYO Auction Closes 8/29 | 7 PM (MST)

“7232” has production records of BR 3/96, NR 3/107, and YR 2/106. She has a tremendous herd bull on her now from our summer calving group. “7232” is throwing a tremendous amount of performance in her progeny, she has the power to change one! “7232” is extremely long, big hipped, with a beautiful udder. This Resource X Donna 714 cross has been one of the best we have ever made here. “7232” has the potential to make a big time “Herd Bull”. Coleman Patron 269 was the top-selling bull of his sire group at \$80,000 going to Voss Angus of Dexter, Iowa. He is one of the first sons to sell by the outcross sire, South America. Coleman South America 269 is a heavy muscled, wide topped, big hipped, attractive fronted, and great footed bull that has



Coleman Patron 269
Sire of Embryos

all the elements to make great cattle. **These are IVF embryos (Trans Ova), we are selling three embryos in this mating and guaranteeing one pregnancy.**

Lot 32 – 3/6 IVF EMBRYOS

Coleman Eriskay 291 x Sitz Barricade 632F



Coleman Eriskay 291
Dam of Embryos

Sitz Stellar 726D

Sitz Barricade 632F

19078148 SITZ Barbaramere Nell 765D

Coleman Juneau 044

Coleman Eriskay 291

17246470 Sinclair Eriskay 2N1 7883

CED	BW	WW	YW	MILK	SC	MARB	RE	SM
9	1	64	111	24	.88	.43	.55	75

Bid price is per embryo. Package prices is 3/6x bid price. Buyer is responsible for cost of shipping embryos.

Online EMBRYO Auction Closes 8/29 | 7 PM (MST)

“291” has been a particularly good female here. “291” is the dam of “Navigator 614” a proven bull that is leaving an extremely good set of daughters here, and whose sons have been topping our sales. “Navigator” throws as much true muscle as any bull we have ever used here. “Navigator” sons were very well received in our 2019 bull sale. We sold out of semen on Navigator last spring but have some more now available. “291” has 6 calves with a calving interval of 367, BR 8/88 NR 8/105 and YR 7/101. “291” has a perfect udder, long sided, deep ribbed, and complete. Not very often you have a female that is extreme low BW like “291” and then throws this much performance. This mating will be special. Sitz Barricade, a featured Genex sire, is a new bull we have started



Sitz Barricade 632F
Sire of Embryos

using, lots of body, deep ribbed, and good footed. Barricade is now deceased, and semen is extremely limited. Extremely exciting mating here for sure. **These are IVF embryos (Trans Ova), we are selling three embryos in this mating and guaranteeing one pregnancy.** Buyer has the option to take six embryos out of this mating and we will guarantee 2 pregnancies. These embryos are exportable to Canada.

www.LiveAuctions.TV

Lot 33 – 3/6 IVF EMBRYOS

Coleman Eriskay 291 x Coleman Mission 1447



Coleman Eriskay 291
Dam of Embryos

Coleman Charlo 0256

Coleman Mission 1447

20500595

Coleman Donna 439

Coleman Juneau 044

Coleman Eriskay 291

17246470

Sinclair Eriskay 2N1 7883

CED	BW	WW	YW	MILK	SC	MARB	RE	SM
17	-2.7	49	88	29	.98	.19	.55	83

Bid price is per embryo. Package prices is 3/6x bid price. Buyer is responsible for cost of shipping embryos.

Online EMBRYO Auction Closes 8/29 | 7 PM (MST)

//291" has been a particularly good female here. "291" is the dam of "Navigator 614" a proven bull that is leaving an extremely good set of daughters here, and whose sons have been topping our sales. "Navigator" throws as much true muscle as any bull we have ever used here. "Navigator" sons were very well received in our 2019 bull sale. We sold out of semen on Navigator last spring but have some more now available. "291" has 6 calves with a calving interval of 367, BR 8/88 NR 8/105 and YR 7/101. "291" has a perfect udder, long sided, deep ribbed, and complete. Not very often you have a female that is extreme low BW like "291" and then throws this much performance. Coleman Mission 1447 was the \$55,000 feature in the 2023 bull sale going to Gaugler Angus Ranch in Montana. Mission was as popular as any bull in our spring bull sale. He has exceptional phenotype in a moderate low input package, with added muscle shape, and body. He is a son of the Pathfinder Sire, Coleman Charlo 0256 back to the dam of the record selling Coleman Glacier 041, Coleman Donna 439. Mission did an excellent job breeding here this spring, gaining weight while out breeding a set of heifers. His Pathfinder dam, Coleman Donna 439, is



Coleman Mission 1447
Sire of Embryos

as good of producer that there is in the program, and she has a progeny production record of BR 6@92, WR 6@106, YR 5@106. She is a model Angus cow with a beautiful udder, a wonderful maternal design and one of the top income-producing females on the ranch. She also produced the top-selling heifer calf of the 2022 Your Maternal Source fall female sale, Coleman Donna 264 and the top two-year-old spring selling pair, Coleman Donna 046. **These are IVF embryos (Trans Ova), we are selling three embryos in this mating and guaranteeing one pregnancy.** Buyer has the option to take six embryos out of this mating and we will guarantee 2 pregnancies.

www.LiveAuctions.TV

Lot 34 – 3/6 IVF EMBRYOS

Coleman Donna 5207 x Coleman Glacier 041



Coleman Donna 5207
Dam of Embryos

S A V Renown 3439

Coleman Glacier 041

19866409 Coleman Donna 439

O C C Great Plains 943G

Coleman Donna 5207

18410196 Coleman Donna 714

CED	BW	WW	YW	MILK	SC	MARB	RE	SM
10	-0.5	61	105	31	.19	-.22	.69	83

Bid price is per embryo. Package prices is 3/6x bid price. Buyer is responsible for cost of shipping embryos.

Online EMBRYO Auction Closes 8/29 | 7 PM (MST)

“5207” is a Pathfinder female, with a calving interval of 352 days on her first 4 calves, BR 4/95, NR 4/109, and YR 3/108. She has bred back first straw AI for the 3rd year in a row. “5207” is extremely angular, deep sided, perfect udder, and a big, long level hip. We’re overly excited for her future here. “5207” consistently has one of our best calves each year, her son by Coleman Resource 710 was one of our high selling bulls in our 2021 Bull sale. “5207” just weaned a big stout bull by Coleman Rock 7200. “Glacier” has been a standout since he was born. Glacier’s first calves are on the ground, they are very impressive as babies. Glacier has the best feet I’ve ever seen on a bull before, extremely sound, and athletic, with a great herd bull look and presence. He’s the bull the industry has been looking for. Glacier’s flush sisters are calving this spring, and look impressive, perfect udders, great feet, stout, with a great look. We believe it all starts with the mother cow; Glaciers Pathfinder dam is the fourth consecutive generation to make it the donor pen here. “439” has ratios of BR 5/93, NR 5/107, and YR 5/106. 439 has been a favorite of visitors here since she was a heifer calf, we’ve kept 4 different sons of her here that we are currently using, she would be as good as any female we’ve ever had the opportunity to work with here. “439” is also the Dam of Mission 1447, and Ace 989, both are doing a tremendous job for us. **These are IVF embryos (Trans Ova), we are selling three embryos in this mating and guaranteeing one pregnancy.** Buyer has the option to take six embryos out of this mating and we will guarantee 2 pregnancies. These embryos are exportable to Canada.



Coleman Glacier 041
Sire of Embryos

Lot 35 – 3/6 IVF SF F EMBRYOS

Coleman Donna 5207 x J Trademark 1037



Coleman Donna 5207
Dam of Embryos

Sitz Resilient 10208

J Trademark 1037

20160403 Mill Brae Iden Georgina 4086

OCC Great Plains 943G

Coleman Donna 5207

18410196 Coleman Donna 714

CE	BW	WW	YW	MILK	SC	MARB	RE	SM
13	-0.8	65	115	30	.37	.29	.73	89

Bid price is per embryo. Package prices is 3/6x bid price. Buyer is responsible for cost of shipping embryos.

Online EMBRYO Auction Closes 8/29 | 7 PM (MST)

“5207” is a Pathfinder female, with a calving interval of 352 days on her first 4 calves, BR 4/95, NR 4/109, and YR 3/108. She has bred back first straw AI for the 3rd year in a row. “5207” is extremely angular, deep sided, perfect udder, and a big, long level hip. We’re overly excited for her future here. “5207” consistently has one of our best calves each year, her son by Coleman Resource 710 was one of our high selling bulls in our 2021 Bull sale. “5207” just weaned a big stout bull by Coleman Rock 7200. This mating to Trademark will be extremely good. Trademark was selected as the \$165,000 top selling bull of the Cattleman’s Cut Bull Sale. He is a low-birth weight calving ease bull, with double digit calving ease direct, with an outcross pedigree for our program. “Trademark” has caught the attention of cattleman from all across the country. He has tremendous performance, added muscle shape, with unique combination of phenotype, and an incredible number package. We are excited



J Trademark 1037
Sire of Embryos

to own Trademark’s dam. She was the record selling \$210,000 ½ interest female in our recent female sale to Jocko Valley in MT. She has a progeny record of 6 head/103 weaning, and a calving interval of 347 on 6 head. **These are IVF embryos (Trans Ova), we are selling three embryos in this mating and guaranteeing one pregnancy.** Buyer has the option to take six embryos out of this mating and we will guarantee 2 pregnancies. These embryos have been sexed for females, 90-95% accurate.

COMPLETE FALL HERD DISPERSAL SALE

Selling 625 Head!

FALL PAIRS | FALL HEIFERS | ET HEIFERS | DONORS
EMBRYOS FEATURED HERD SIRES | 125 COMMERCIAL SPRING-BRED HEIFERS —
All AI Bred to Coleman Easy Decision 1539



10% \$M
COLEMAN DONNA 6317
Reg. 18734954
She Sells!



COLEMAN ANGUS
YOUR MATERNAL SOURCE

Tuesday
October 10, 2023

HELD AT THE RANCH
IN CHARLO, MT

Let us know if we can
be of assistance.

Larry & Dee Coleman Family
406.240.2751

Jeremy & Jenny Haag Family
406.833.0117

40067 Morris Road
Charlo, Montana 59824
colemanangus@blackfoot.net

CATALOG UPON REQUEST ONLY VISIT WWW.COLEMANANGUS.COM