

BULL & FEMALE SALE
Fennimore, Wisconsin
FEBRUARY 18, 2024



SALE @ 1:00 PM AT THE FENNIMORE LIVESTOCK EXCHANGE

Spring Creeks BULL & FEMALE SALE

FEBRUARY 18, 2024 @ 1 P.M.

FENNIMORE LIVESTOCK EXCHANGE **Fennimore, WI**

SELLING 57 HEAD Limousin • Lim-Flex • Angus
42 Bulls, 12 Bred Females & 3 Open Heifers

SALE FEATURES

- Free wintering until April 1, 2024
- Free delivery to 250 miles (central point beyond)
- One-half down, balance due upon delivery
- All bulls unconditionally guaranteed first breeding season

SALE-DAY PHONES

Bob Mitchell.....608/553-0971
Bart Mitchell.....608/553-8070
Matt Mitchell.....608/553-1251
Scott Mitchell.....608/553-8069

AUCTIONEER

Chisum Peterson.....605/730-4214

SALE CONSULTANTS

Greg Miller.....608/778-8785

SALE MANAGEMENT



MC Marketing Management
Kiley McKinna.....402/350-3447
Wiley Fanta.....320/287-0751
mcmarketingsales@aol.com

www.mcmarketingmanagement.com

SCHEDULE OF EVENTS

9:30 pm - Noon.....Viewing of Bulls
11:30 am - 12:30 pm.....Lunch
1:00 pm.....Sale Begins

SPECIAL GUESTS

Dean Summerbell, Heartland Limousin Assn..... 612/693-3799
Casey Jentz, Special Assignment.....608/234-1998
Jarad Ruter, Special Assignment.....815/238-7530

SALE LOCATION

Fennimore Livestock Exchange, Fennimore, WI
GPS Location: 14034 US-61, Fennimore, WI 53809
North of Fennimore on Hwy. 61.

ACCOMMODATIONS

The River Inn.....608/375-8000
8.5 miles north of sale location
1700 Elm St, Boscobel, WI 53805

Country Inn & Suites.....608/326-5700
30 miles west of sale location
1801 Cabela's Lane, Prairie du Chien, WI 53821

Welcome

TO THE 2024 SPRING CREEK CATTLE COMPANY BULL AND FEMALE SALE

It is an honor for those of us at Spring Creeks Cattle Co. to invite you to our sixth Bull Sale, February 18, 2024, at 1:00p.m. at the Fennimore Livestock Exchange in Fennimore, Wisconsin. The bull business is something we've been involved in for more than three decades. After all of these years, hundreds of bulls sold and many loyal and satisfied customers later, we are thrilled to have you evaluate our program at our sale in February.

We are fortunate in that we are located in a portion of Wisconsin with access to lush green pastures and an abundance of feed. The bulls selected for this sale are from the top genetics in their respective breeds and are products of our cows that efficiently convert Mother Nature's best into the best genetics the Limousin and Angus breeds have to offer. Please keep in mind, the bulls in this offering received no creep feed and the fall bulls were summered on grass with very little supplement. As such, rest assured these bulls are fit and ready to handle a substantial work load.

As in the past, we are offering a few incentives for purchasing your bull early in the bull buying season. Customers will have the option to pay 50% down sale day on any bull over \$3,000. We will gladly keep the bulls until April 1, 2024, or give you a \$50 discount for hauling them home the day of the sale. We continue to guarantee bulls as we have in the past.

At Spring Creeks Cattle Co. we have worked hard to earn the reputation of "Breed'n the Feed'n Kind!" The cattle inventory is the lowest in decades. The potential for record cattle markets has never been better. This is a good time to be in the cattle business. It has never been more important to invest in genetics that excel in all phases of production as efficiently as possible. The bulls we have presented for your appraisal will add value to your program and the industry. Buy with confidence and with the knowledge we are working hard to ensure your success in the Beef Business!

SINCERELY,

Bob Mitchell & Family
Spring Creeks Cattle Company



A Family Program

BUILT ON CUSTOMER TRUST

Spring Creeks Cattle Co is a third-generation operation located in the heart of southwest Wisconsin. Over the years of raising kids and cows our values that we initially founded the program on are still firmly intact – faith, family, beef industry fundamentals and customer relations.

To that end, one of the things we are most proud of is the relationships we've forged with our loyal customers base - many of which have been with us from the start and still trust us as their seedstock supplier of choice 3 generations later. We take the people side of the business very seriously and never take it for granted, that's why making sure customers are satisfied has always been a top priority at Spring Creeks Cattle Company.

It's our wish that you can find something of value in this sale offering and look forward to working with both seedstock and commercial cattlemen alike. From our vantage point, at Spring Creeks we view each one of you as valued partners in the cattle business. Remember, you're not just investing in a bull or female but rather a family-oriented program built on years of TRUST.

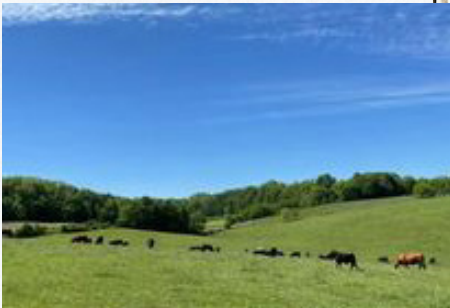


Limousin & Lim-Flex

LOTS 1-30

It is once again our pleasure as a family to present to you what we feel is our best bull offering to date. We workday in and day out to raise the best Limousin and Angus seedstock possible and we think this offering accurately highlights the long-term goals of our operation. Regardless of the direction of your program, we are confident you will find genetics in this offering capable of taking your program in a positive direction. Just like you, we are involved in the beef cattle business each and every day, so we are familiar with the challenges we all face and we know what kinds of bulls and females it takes to be profitable in the real world of beef production.

SELLING 30 LIMOUSIN & LIM-FLEX BULLS



LIMOUSIN BULLS



SPRING CREEKS **LOAN APPROVED**



FWLY LHC CAPITAL **SIRE**

1

SPRING CREEKS **LOAN APPROVED**

1/29/23 • LIM-FLEX(56/50.7) • HOMO POLLED (P-1) • HOMO BLACK (P-1) • LFM2796497 • BMAS 379L • BULL

MAGS CABLE
FWLY LHC CAPITAL ET
CLLL CRYSTAL 334W

TASF BELIEVE 854B
MAGS FISCHEL 379F
MAGS XANTHOMA

MAGS APPLESEED
MAGS ZEQUIN
WLR DIRECT HIT
AUTO CHRISTY 8889R
DHVO DEUCE 132R
CHERRY KNOLL ELSA 8014
SAV 004 PREDOMINANT 4438
MAGS GRETCHEN 855M

Act. BW 78 • Adj. WW 686

CED	BW	WW	YW	MK	CEM	SC	DOC	YG	CW	REA	MB	\$MTI
12	1.6	68	104	25	7	1.2	10	-0.17	30	0.61	0.22	59.89
30%				50%	35%	20%		45%				

Big-time herd sire prospect that combines phenotype and numbers. He has breed-leading traits highlighted by his 68 weaning weight, 104 yearling weight, 1.20 scrotal, 0.22 marbling, and 59.89 \$MTI. This number profile would be a good addition to any herd. Sired by the well-known A.I. sire FWLY LHC Capital, who has sired many outstanding progeny across the country. Mothered by MAGS Fischel 379F, a TASF Believe 854B daughter. Homozygous black and homozygous polled this one will fit a wide variety of programs.



SPRING CREEKS **LITTLE POWER**



SPRING CREEKS **LEAVE IT ON**

2

SPRING CREEKS **LITTLE POWER**

3/25/23 • PERCENTAGE(79/71.4) • HOMO POLLED (P-2) • BLACK • NXM2604904 • BMAS 1018L • BULL

MAGS ZARAH
RUNL COMPASS 341 C
RUNL ZANS POLLY 161 Z

WULFS GALLAGHER 7056G
SPRING CREEKS JUNE BUG 1018J
SPRNG CRKS CALM COW 5071C

MAGS WHITCOMB
AUTO CARMINDA 656S
WULFS WARBONNET 6254W
RUNL WRISQUE 312W
WULFS XCELLSIOR X252X
WULFS EDWINNA 7056E
WULFS XTRACTOR X233X
SPRNG CRKS ROSALIE 2002Z

Act. BW 74 • Adj. WW 678

CED	BW	WW	YW	MK	CEM	SC	DOC	YG	CW	REA	MB	\$MTI
17	-2.2	72	108	28	8	0.81	15	-0.29	33	0.92	0.2	61.48
4%	20%	15%	20%	10%	45%	40%	10%	25%	30%		40%	

Searching for your next heifer-safe herd bull prospect? Look no further, study his calving numbers, and find 17 calving ease direct, -2.2 birth weight, and 17 calving ease. All three of these traits are breed-leading and rank within the top percentile. Continue to read his numbers and find no sacrifice of growth with a 72-weaning weight and 108-yearling weight. Sired by one of the most popular sires to come out of the Running Creek program, RUNL Compass 341 C. Spring Creeks Little Power is a big numbered calving ease specialist. Her dam is a first calf heifer, this WULFS Gallagher 7056G daughter did an excellent job on her first calf. Add this individual to your herd bull arsenal.

3

SPRING CREEKS **LEAVE IT ON**

2/27/23 • PERCENTAGE(79/70.6) • HOMO POLLED • RED • NXM2604891 • BMAS 0057L • BULL

RPY PAYNES CRACKER 17E
SPRING CREEKS GOLDEN EAGLE
AUTO TOPPER 688X

HUNT CREDENTIALS 37C ET
SPRING CREEKS HAPPY GIRL
SPRNG CRKS EMULOUS 4080B

COLE ARCHITECT 08A
EDW BEACH BODY
WULFS NASA 1212N
AUTO REESE 253U
HUNT TESTAMENT 40T
JKTW WHISKEY RIVER 985 W
AUTO WILL POWER 160X
EXLR EMULOUS 780P

Act. BW 89 • Adj. WW 737

CED	BW	WW	YW	MK	CEM	SC	DOC	YG	CW	REA	MB	\$MTI
8	0.8	65	101	29	4	1.09	16	-0.25	36	0.67	0.23	60.15
		30%	30%	10%		25%	5%	30%				45%

Rugged phenotype with capacity, growth, and extra muscle expression. Study this bull's well-balanced numerics. Son of Spring Creeks Golden Eagle, who has been entrusted with pasture duties the past few years. His dam Spring Creeks Happy Girl is a daughter of Hunt Credentials 37C. Be the winning bidder sale day and see what Spring Creeks Leave It On can do for your operation.

LIMOUSIN BULLS



SPRING CREEKS **LEGEND 9021L**



SPRING CREEKS **LEARN IT**

4

SPRING CREEKS **LEGEND 9021L**

4/1/23 • LIM-FLEX(54/47.8) • HOMO POLLED • DOUBLE BLACK • LFM2796495 • LMIT 9021L • BULL

WULFS GALLAGHER 7056G
SPRING CREEKS JUPITER 9147J
SPRING CREEKS GAME ONE 9147G

STEVENSON TURNING POINT
SPRING CREEKS GYPSY 9021G
SPRING CREEKS ESTER 7055E

WULFS XCELLSIOR X252X
WULFS EDWINNA 7056E
SPRING CREEKS ELESWHERE
WULFS IDOLDEE 7909E
PLATTEMERE WEIGH UP K360
STEVENSON PRIDE I167X
WULFS SIRLOIN 3172S
PBR5035X

Act. BW 86 • Adj. WW 661

CED	BW	WW	YW	MK	CEM	SC	DOC	YG	CW	REA	MB	\$MTI
14	-1.7	65	100	28	8	0.84	12	-0.2	32	0.84	0.22	59.27
10%	10%			25%	20%			40%		25%		

The opportunities for this one are endless. He is stout, athletic, and attractive. This heifer-safe herd sire prospect hosts a 14 calving ease direct, -1.7 birth weight, paired with a 65 weaning weight, and 100 yearling weight. What's more, he has an outstanding 0.84 ribeye area. Sired by Spring Creeks Jupiter 9147J. Spring Creeks Gypsy is the dam of this individual; she is a daughter of the popular Angus A.I. sire Stevenson Turning Point. Make sure Spring Creeks Legend 9021L is at the top of your list on sale day.

5

SPRING CREEKS **LEARN IT**

3/20/23 • PERCENTAGE(82/73.1) • HOMO POLLED (P-3) • HOMO BLACK (P-3) • NXM2604900 • BMAS 4117L • BULL

AHCC EARNING POWER 900E ET
JBV YELLOWSTONE 901G
JBV GIRL CRUSH 422B

WULFS WALCOTT F711W
SPRING CRKS 2 TO TANGO
SPRING CRKS 2 TO TANGO

MAGS ANCHOR
LVLS 9066U
JBV EXPEDITION 205Z
JBV BRITTANY 029X
WULFS REAGAN 2011R
DNWC TRIXY 711T
EXAR 263C
SEEE TWO TO TANGO 101T

Act. BW 92 • Adj. WW 603

CED	BW	WW	YW	MK	CEM	SC	DOC	YG	CW	REA	MB	\$MTI
7	3	68	111	27	5	1.73	12	-0.32	35	0.86	0.1	56.97
		25%	15%	15%		2%	30%	20%		35%		

Big-time growth bull alert. Spring Creeks Happy Day 3053 is a powerfully built, wide-based, high-performing herd sire prospect who recorded a 603 lb. 205-day weight. This growth could be predicted with his 68 weaning weight EPD which ranks him in the top 25% of the breed, and his 111 yearling weight EPD that ranks him in the top 15%. Continue to study his number profile and find 0.86 ribeye area and 56.97 \$MTI. This winning combination of high growth and superior carcass will make his calves a hot commodity. Sired by JBV Yellowstone 901G, an AHCC Earning Power 900E son. He has the data and pedigree to do big things for your operation.

6

SPRING CREEKS **KEEP IT UP**

4/12/22 • PUREBRED(100/87.6) • HOMO POLLED (P-2) • RED • NPM2797065 • BMAS 59K • BULL

WULFS YANKEE K689Y
WULFS APOSTLE T343A
WULFS ULTRA DIAMOND 8571U

CHTT WORK TIME 4925W
MISS SYES WORKTIME 559A
MISS SYES URBAN 558X

HUNT MR JOCK 44J
 WULFS SOLOIST 6284S
 JLWM DIRE STRAYTS 4109P
 WULFS NICHOLA 3279N
 HC MONTANA JUSTICE 694
 CHTT3625S
 WULFS URBAN COWBOY 2149U
 MISS SYES MADE TO ORDER

Act. BW 88 • Adj. WW 623

CED	BW	WW	YW	MK	CEM	SC	DOC	YG	CW	REA	MB	\$MTI
4	3.1	62	87	34	2	1	20	-0.59	10	1.25	-0.23	45.15
				2%		10%	1%	15%		20%		

7

SPRING CREEKS **KEEPSAKE** 25K

6/12/22 • LIM-FLEX(62/56.1) • DOUBLE POLLED • DOUBLE BLACK • LFM2797064 • BMAS 25K • BULL

WULFS WILLARD 5115W
WULFS ENDEAVOR C703E
KEVN ZAMBIA 232Z

RR MOONSHINE 2211
BBPB PENNY 25U
BBPB PENNY 185B 545P

WULFS REVOLVER 1219R
 WULFS REMI 5115R
 S A V BRILLIANCE 8077
 KEVN JOSIE 915J
 TC MOONSHINE 001
 EXAR DIXIE ERICA 0456
 JCL 73J
 CBLR MS PENNY POWER 185B

Act. BW 89 • Adj. WW 589

CED	BW	WW	YW	MK	CEM	SC	DOC	YG	CW	REA	MB	\$MTI
11	0.4	51	74	23	6	0.56	15	-0.27	16	0.7	0.25	56.64
	40%	35%				50%	20%	25%		45%		

8

SPRING CREEKS **EASY TO GET**

7/12/22 • PUREBRED(89/80) • HOMO POLLED • DOUBLE BLACK • NPM2797041 • VMIT 0410K • BULL

COLE BUSINESSMAN 104B
SYES EASY GOING 77E
MISS SYES RANSOM 76X

WULFS SIRLOIN 3172S
SPRING CREEKS HAVE A HEART
SPRING CREEKS FIRST EDITION

RICHMOND YOGI SRD 7Y
 COLE MISS PUREPOWER 809U
 WULFS RANSOM 3059R
 MISS SYES JUSTICE 476U
 COLE WULF HUNT
 WULFS NEGOTIABLE 3172N
 SPRNG CRKS CLASSIC CAR 4190C
 AUTO ASPEN 407A

Act. BW 86 • Adj. WW 671

CED	BW	WW	YW	MK	CEM	SC	DOC	YG	CW	REA	MB	\$MTI
14	-1.6	63	96	22	10	0.45	16	-0.54	22	1.25	-0.18	46.97
	15%	10%			4%		15%	25%		20%		

9

SPRING CREEKS **KEEP EM ROLLIN**

9/6/22 • PERCENTAGE(85/74.1) • DOUBLE POLLED • DOUBLE BLACK • NXM2797044 • BMAS 1021K • BULL

CJSL CREED 5042C
AHCC CREED 318G
AHCC MISS WAZOWSKI A318

WULFS SIRLOIN 3172S
SPRING CREEKS ESTER 7055E
PBR5035X

MAGS AVIATOR
 CJSL 2090Z
 MAGS WAZOWSKI
 AHCC MISS RESPONDER W916
 COLE WULF HUNT
 WULFS NEGOTIABLE 3172N
 EXLR SATURN 040S
 MAGS NEW GAMES 169N

Act. BW 90 • Adj. WW 707

CED	BW	WW	YW	MK	CEM	SC	DOC	YG	CW	REA	MB	\$MTI
11	0.2	57	92	28	8	0.2	9	-0.3	23	0.87	0.24	58.56
		50%	40%	10%	45%			25%		35%		

10

SPRING CREEKS **KEMPER** 9041K

10/12/22 • PERCENTAGE(85/76.6) • DOUBLE POLLED • DOUBLE BLACK • NXM2797046 • BMAS 9041K • BULL

CJSL CREED 5042C
AHCC CREED 318G
AHCC MISS WAZOWSKI A318

AUTO DOLLAR GENERAL 122R
SPRING CRKS WALK-IN 9041W
PSLP NESTA 314N

MAGS AVIATOR
 CJSL 2090Z
 MAGS WAZOWSKI
 AHCC MISS RESPONDER W916
 LVLS SECRET WEAPON 4408K
 AUTO KYRIA 232K
 RPLF KAISER 206K
 PSLP HOT CAKES 868H

Act. BW 91 • Adj. WW 763

CED	BW	WW	YW	MK	CEM	SC	DOC	YG	CW	REA	MB	\$MTI
12	0.1	64	103	34	9	0.45	10	-0.19	33	0.78	0.32	62.7
	45%	50%	30%	25%	1%	30%		40%		45%	50%	35%

11

SPRING CREEKS **KAN DO** 7301K

10/15/22 • PERCENTAGE(85/75.4) • HOMO POLLED • DOUBLE BLACK • NXM2797043 • BMIT 7301K • BULL

AHCC EARNING POWER 900E ET
JBV YELLOWSTONE 901G
JBV GIRL CRUSH 422B

WULFS SIRLOIN 3172S
SPRING CREEKS ELISA 7301E
SPRING CRKS CRANBERRY

MAGS ANCHOR
 LVLS 9066U
 JBV EXPEDITION 205Z
 JBV BRITANNY 029X
 COLE WULF HUNT
 WULFS NEGOTIABLE 3172N
 MAGS ZODIAC
 MAGS XANTHOPHYLL

Act. BW 87 • Adj. WW 752

CED	BW	WW	YW	MK	CEM	SC	DOC	YG	CW	REA	MB	\$MTI
8	1.1	66	108	30	6	1.55	13	-0.36	34	0.94	0.13	57.77
		30%	20%	5%		4%	25%	20%		25%		

LIMOUSIN BULLS

12

SPRING CREEKS **KEEPS COMING**

10/24/22 - LIM-FLEX(68/60.5) - DOUBLE POLLED - HOMO BLACK (P-1) - LFM2797042 - BMAS 06K - BULL

WULFS XCLUSIVE 2458X
SPRING CREEKS CUTTING EDGE
AUTO 623W

MAGS XUKALANI
JEPS SCOTCHCAP 06Z
EXLR SCOTCH CAP 762T

WZRK PRIMESTAR 861P
WULFS MISSIVE 2258M
AUTO FULL THROTTLE 771R
AUTO PRUDENSE 614T
RITO 112 OF 2536 RITO 616
MAGS UKALANI
LESF ASPHALT 9N
EXAR SCOTCH CAP 1548

Act. BW 89 - Adj. WW 700

CED	BW	WW	YW	MK	CEM	SC	DOC	YG	CW	REA	MB	\$MTI
10	1.5	59	89	20	6	0.75	12	-0.22	22	0.51	0.24	58.35
					50%			35%				

13

SPRING CREEKS **KELVIN** 9009K

11/17/22 - PUREBRED(100/89.4) - DOUBLE POLLED - RED - NPM2797045 - BMAS 9009K - BULL

WULFS YANKEE K689Y
WULFS APOSTLE T343A
WULFS ULTRA DIAMOND 8571U

FRDC 3W
FRDA 129Y
FRDA NOSTALGIA 673N

HUNT MR JOCK 44J
WULFS SOLOIST 6284S
JLWM DIRE STRAYTS 4109P
WULFS NICHOLA 3279N
HUNT CORNHUSKER 225N
FRDC MY FIRST HEIFER 627M
WULFS GUARDIAN 5074G
FRDA POLLED DOLLBABY 193D

Act. BW 90 - Adj. WW 621

CED	BW	WW	YW	MK	CEM	SC	DOC	YG	CW	REA	MB	\$MTI
4	3.1	58	80	28	3	0.75	16	-0.59	9	1.32	-0.17	46.07
						20%		30%	15%	15%	10%	

14

SPRING CREEKS **DIAMOND JUBILEE**

1/4/23 - PUREBRED(87/77.8) - HOMO POLLED (P-1) - BLACK - NPM2565148 - BMIT 135L - BULL

WULF'S ZIPLOCK N922Z
LFLC BANK ACCOUNT 701B
LFLC 701X XTRA GOOD

HUNT CREDENTIALS 37C ET
CWCL JUBILEE 135J
CWCL GANGNAM STYLE 135A

WULFS XTRACTOR X233X
PLND WINDMILL 922W
WULFS RANSOM 3059R
LFLC DAKOTA BELLE 602U
HUNT TESTAMENT 40T
JKTW WHISKEY RIVER 985 W
SILVEIRAS STYLE 9303
CWCL XENA 102X

Act. BW 91 - Adj. WW 756

CED	BW	WW	YW	MK	CEM	SC	DOC	YG	CW	REA	MB	\$MTI
12	1	58	83	26	8	0.47	12	-0.35	17	0.71	-0.01	50.02
	30%	50%			35%	25%					45%	

15

SPRING CREEKS **LANDMARK** 8005L

1/4/23 - PUREBRED(89/78.5) - HET POLLED (T) - HOMO BLACK (T) - NPM2565149 - LMIT 8005L - BULL

AHCC EARNING POWER 900E ET
JBV YELLOWSTONE 901G
JBV GIRL CRUSH 422B

LFLC BANK ACCOUNT 701B
SPRING CREEKS FANCY 8005F
SPRING CREEKS DARLENE 6168D

MAGS ANCHOR
LVLS 9066U
JBV EXPEDITION 205Z
JBV BRITANNY 029X
WULF'S ZIPLOCK N922Z
LFLC 701X XTRA GOOD
DHVO DEUCE 132R
AUTO EMMA 621X

Act. BW 86 - Adj. WW 699

CED	BW	WW	YW	MK	CEM	SC	DOC	YG	CW	REA	MB	\$MTI
7	2.6	70	115	30	6		15	-0.36	32	0.97	-0.07	51.92
		30%	15%	15%	50%		20%		25%			

16

SPRING CREEKS **LOCKDOWN** 0024L

2/8/23 - PUREBRED(100/89.5) - HOMO POLLED (P-3) - RED - NPM2604887 - BMAS 0024L - BULL

WULF'S ZIPLOCK N922Z
LFLC BANK ACCOUNT 701B
LFLC 701X XTRA GOOD

HUNT CREDENTIALS 37C ET
SPRING CREEKS HOLLY JOLLY
SPRING CREEKS DO IT RIGHT

WULFS XTRACTOR X233X
PLND WINDMILL 922W
WULFS RANSOM 3059R
LFLC DAKOTA BELLE 602U
HUNT TESTAMENT 40T
JKTW WHISKEY RIVER 985 W
WULFS XTRACTOR X233X
KRVN REGATTA 233R

Act. BW 71 - Adj. WW 613

CED	BW	WW	YW	MK	CEM	SC	DOC	YG	CW	REA	MB	\$MTI
13	-1.4	57	82	27	9	0.4	14	-0.43	14	0.77	-0.08	47.66
	25%	10%		30%	10%		45%					

17

SPRING CREEKS **LET IT RIDE**

2/19/23 - PERCENTAGE(80/72.1) - HOMO POLLED - DOUBLE BLACK - NXM2604889 - BMAS 1010L - BULL

WULFS COBRA 2662C
WULFS GENIUS 5293G
WULFS CHARISMA 5293C

WULFS GALLAGHER 7056G
SPRING CREEKS JUMP IN 1010J
SPRING CREEKS GRAT ONE 9092G

WULFS XTRACTOR X233X
MISS WULFETTE 2662Z
WULFS ZOUAVE 8438Z
WULFS ZESHULIA 2631Z
WULFS XCELLSIOR X252X
WULFS EDWINNA 7056E
WULFS ENDEAVOR C703E
AUTO EMMA 621X

Act. BW 64 - Adj. WW 633

CED	BW	WW	YW	MK	CEM	SC	DOC	YG	CW	REA	MB	\$MTI
15	-2.9	62	90	26	10		15	-0.29	27	1.01	0.04	52.54
	15%	15%	35%	45%	20%	15%	10%	25%		20%		

18

SPRING CREEKS LEAVE IT BE

2/22/23 • PUREBRED(92/83) • DOUBLE POLLED • RED • NPM2604890 • BMAS 19L • BULL

HUNT CREDENTIALS 37C ET
ROYAL JESTER RBGL 103J
BOSS LAKE MS MOLLY 812F ET

COLE ARCHITECT 08A
SPRING CREEKS SADIE 19F
SPRNG CRKS PALR 2070Z

HUNT TESTAMENT 40T
JKTW WHISKEY RIVER 98S W
COTTAGE LAKE BORDER AGENT
AUTO OLGA 498A
MRL X-RATED 014X
COLE MISS LODESTAR 826U
SPRNG CRKS U BONUS 510U
EXLR PALR 7178T

Act. BW 82 • Adj. WW 632

CED	BW	WW	YW	MK	CEM	SC	DOC	YG	CW	REA	MB	\$MTI
9	1.5	62	92	18	6	0.95	16	-0.35	29	0.89	-0.01	51.33
					50%	15%	15%		35%		45%	

19

SPRING CREEKS KEY AND PEELE

2/24/23 • LIM-FLEX(75/66.2) • HOMO POLLED (P-1) • BLACK • LFM2797067 • LMIT 1005L • BULL

WULF'S ZIPLOCK N922Z
LFLC BANK ACCOUNT 701B
LFLC 701X XTRA GOOD

LESF ASPHALT 9N
SPRING CREEKS J QUILLIAN
SPRING CREEKS ENTENSE 720S

WULFS XTRACTOR X233X
PLND WINDMILL 922W
WULFS RANSOM 3059R
LFLC DAKOTA BELLE 602U
GPFF BLAQUE RULON
GPFF EXTRA SWEET ELITE
EXAR 263C 1223B
EXAR ENTENSE 832

Act. BW 89 • Adj. WW 661

CED	BW	WW	YW	MK	CEM	SC	DOC	YG	CW	REA	MB	\$MTI
12	-0.5	46	67	21	8	0.28	11	-0.3	13	0.63	-0.01	46.04
	30%	20%				20%			20%			

20

MR WFL 320L

3/4/23 • LIM-FLEX(57/51.2) • DOUBLE POLLED • DOUBLE BLACK • LFM2603354 • SDW1 320L • BULL

LVLS BANK ACCOUNT 8116B
MAGS GRIZZLY RUG 198G
MAGS BETHANNIE

CJSL DAUNTLESS 6257D ET
TLRP GENESIS
SCHILLINGS EYE CANDY ET

MAGS WAZOWSKI
LVLS WILMA 8116W
MAGS WINSTON
MAGS THORA
MAGS ZODIAC
LLJB ABSOLUTE STYLE 3056A
SILVEIRAS S SIS GQ 2353
SCHILLING'S WHISPERINGEYE

Act. BW 70 • Adj. WW 590

CED	BW	WW	YW	MK	CEM	SC	DOC	YG	CW	REA	MB	\$MTI
11	0.7	66	104	24	5	0.45	15	0.05	37	0.28	0.45	65.89
	40%	45%					20%		45%		20%	35%

21

SPRING CREEKS LOAN ASSIST

3/5/23 • LIM-FLEX(57/51.9) • HOMO POLLED (P-1) • HOMO BLACK (P-1) • LFM2796498 • BMAS 347L • BULL

MAGS CABLE
FWLY LHC CAPITAL ET
CLLL CRYSTAL 334W

MAGS DRIFTWOOD
MAGS FINLEIGH 347F
MAGS DORABELLA

MAGS APPLESEED
MAGS ZEQUIN
WLR DIRECT HIT
AUTO CHRISTY 8889R
TMCK APOLLO 010A
MAGS BACK ON CAMPUS
MAGS Y-AXIS
MAGS A BOTHER

Act. BW 87 • Adj. WW 607

CED	BW	WW	YW	MK	CEM	SC	DOC	YG	CW	REA	MB	\$MTI
12	2.3	72	116	28	7	1.07	12	-0.24	29	0.76	0.17	60.11
	30%	40%	40%	25%	35%	40%		30%		40%		

SIGHT UNSEEN PURCHASE PROGRAM

Contact a sale representative or ownership if you buy a bull, get him and don't like him, it's real simple you don't own him!



LIMOUSIN BULLS

22

MR WFL 329L
3/16/23 - LIM-FLEX(61/51.5) - DOUBLE POLLED - HOMO BLACK - LFM2603362 - JWI 329L - BULL

CELL ENVISION 7023E
L7 HUMDINGER 0035H
MISS L7 514C
PBRS MILESTONE 137Y
PBRS 9329G
P BAR S ERICA 1003

AHCC BARN BURNER B907
PBRS ZSA ZSA 246Z
WULFS YUKON TRAIL 8084Y
MISS L7 523R
LH U HAUL 135U
MAGS UNIVERSAL TIME
LIMESTONE THRILL T291
BUFORD ERICA 9312

Act. BW 80 • Adj. WW 632

CED	BW	WW	YW	MK	CEM	SC	DOC	YG	CW	REA	MB	\$MTI
10	1.2	66	109	22	5		14	-0.18	34	0.71	0.25	60.69
							35%	45%		45%	55%	

23

SPRING CREEKS **LEARNING CURVE**

3/12/23 - PERCENTAGE(80/72.5) - HOMO POLLED - BLACK - NXM2604896 - BMAS 20L - BULL

COLE DEPUTY 37D
LFL JUNGLE JIM 1030J ET
AUTO BLISS 265Y

COLE BUSINESSMAN 104B
MISS SYES BUSINESSMAN 30E
MISS SYES SPACE SHIP 31W

MAGS ZODIAC
COLE MISS PRODUCTION 874U
LH U HAUL 135U
WLR UGLY BETTY 432U
RICHMOND YOGI SRD 7Y
COLE MISS PUREPOWER 809U
WULFS SPACE SHIP 3223S
MISS SYES NIGHT OWL 91S

Act. BW 89 • Adj. WW 598

CED	BW	WW	YW	MK	CEM	SC	DOC	YG	CW	REA	MB	\$MTI
9	1.9	72	114	24	5	0.85	5	-0.22	27	0.64	0.32	65.21
								15%	15%	40%	40%	35%
											50%	25%

24

SPRING CREEKS **LETS GET IT ON**

3/18/23 - LIM-FLEX(75/67.3) - HOMO POLLED - RED - LFM2604899 - BMAS 316L - BULL

WULFS XCELLSIOR X252X
WULFS GALLAGHER 7056G
WULFS EDWINNA 7056E

WULFS OZARK K115E ET
JRQC JADE ET
LIMOLYN XILDA

WULFS SIRLOIN 3172S
WULFS MISSIVE 2258M
BIEBER DEEP END B597
WULFS CALIBRI 5210C ET
BIEBER HARD DRIVE Y120
WULFS YOUR CHOICE 1419Y
ANCHOR B 'THE SHMOOZE'
LIMOLYN NEW TREND

Act. BW 79 • Adj. WW 669

CED	BW	WW	YW	MK	CEM	SC	DOC	YG	CW	REA	MB	\$MTI
13	-0.9	61	93	23	5	0.9	16	-0.35	26	0.9	0.23	59.69
	20%	15%				50%	15%	10%		20%		

25

SPRING CREEKS **LADDER TRUCK**

3/20/23 - LIM-FLEX(75/67.1) - HOMO POLLED (P-3) - BLACK - LFM2604901 - LIMIT 1049L - BULL

WULF'S ZIPLOCK N922Z
LFLC BANK ACCOUNT 701B
LFLC 701X XTRA GOOD

WULFS ENDEAVOR C703E
SPRING CREEKS JR MISS 1049J
SPRNG CRKS ANNABELLE 3012A

WULFS XTRACTOR X233X
PLND WINDMILL 922W
WULFS RANSOM 3059R
LFLC DAKOTA BELLE 602U
WULFS WILLARD 5115W
KEVN ZAMBIA 232Z
EXAR 263C 1223B
SPRNG CRKS YOUR CHANCE

Act. BW • Adj. WW 704

CED	BW	WW	YW	MK	CEM	SC	DOC	YG	CW	REA	MB	\$MTI
12	-0.4	57	83	23	7	0.34	17	-0.38	14	0.85	-0.01	50.02
	30%	20%				35%		10%	10%		25%	

26

SPRING CREEKS **LOCK OUT** 2002L

3/25/23 - LIM-FLEX(70/62) - DOUBLE POLLED - DOUBLE BLACK - LFM2604902 - BMAS 2002L - BULL

AHCC EARNING POWER 900E ET
JBV YELLOWSTONE 901G
JBV GIRL CRUSH 422B

EXAR SUNDANCE 621E
SPRNG CRKS ROSALIE 2002Z
SPRNG CRKS ROSALIE 5078R

MAGS ANCHOR
LVLS 9066U
JBV EXPEDITION 205Z
JBV BRITTANY 029X
BR MIDLAND
WK PRINCESS 1194
SPRING CREEKS MATTHEW
SPRING CREEKS MAYCE 2029M

Act. BW 78 • Adj. WW 626

CED	BW	WW	YW	MK	CEM	SC	DOC	YG	CW	REA	MB	\$MTI
10	-0.4	63	106	35	8	1.75	16	-0.25	43	0.87	0.28	61.53
	20%			1%	20%	3%	15%	25%	25%	25%	50%	

27

SPRING CREEKS **LOOK AT ME**

3/30/23 - LIM-FLEX(60/54.9) - HOMO POLLED (P-3) - DOUBLE BLACK - LFM2604905 - BMAS 1037L - BULL

WULFS GALLAGHER 7056G
SPRING CREEKS JUPITER 9147J
SPRING CREEKS GAME ONE 9147G

WULFS ENDEAVOR C703E
SPRING CREEKS JILLIAN 1037J
AUTO EMMA 621X

WULFS XCELLSIOR X252X
WULFS EDWINNA 7056E
SPRING CREEKS ELESWHERE
WULFS IDOLDLEE 7909E
WULFS WILLARD 5115W
KEVN ZAMBIA 232Z
AUTO BLAQUE ROCK 1455
PINEGAR'S LASSY 881P

Act. BW 81 • Adj. WW 621

CED	BW	WW	YW	MK	CEM	SC	DOC	YG	CW	REA	MB	\$MTI
11	-0.1	62	94	28	6		15	-0.24	25	0.87	0.22	58.84
	40%	25%						25%	50%	20%	30%	25%

28

SPRING CREEKS LOOKING BACK

3/30/23 - LIM-FLEX(38/34.7) - HOMO POLLED - HOMO BLACK (P-3) - LFM2796499 - BMA5 0032L - BULL

TMCK ARCHITECT 031A
ATAK FUTURE ET
AUTO MOONSHINE 280B ET

MUSGRAVE HEADWAY
CELL 0032H
HBRL AMERICAN PIE 370A

TMCK HYDRAULIC 17Y
TMCK LA VEDA 909Y
EXAR DENVER 2002B
EF YADDA YADDA 809Y
SCHIEFELBEIN ALLIED 514
MUSGRAVE LADY BARBARA 524-57
CONNELY CONSENSUS 7229
AUTO EXCEPTIONAL 2825

Act. BW 78 - Adj. WW 664

CED	BW	WW	YW	MK	CEM	SC	DOC	YG	CW	REA	MB	\$MTI
12	0.9	78	124	26	8	1.05	13	0.01	41	0.48	0.64	76.83
30%	45%	20%	25%	40%	20%	40%	50%		30%		3%	3%

29

SPRING CREEKS LOAN AGAINST

4/3/23 - LIM-FLEX(57/51.9) - DOUBLE POLLED - HOMO BLACK (P-3) - LFM2796500 - BMA5 642L - BULL

MAGS CABLE
FWLY LHC CAPITAL ET
CLLL CRYSTAL 334W

TMCK CHAVEZ 245C
TMCK FALLON 642F
TMCK APPLAUSE 301A

MAGS APPESEED
MAGS ZEQUIN
WLR DIRECT HIT
AUTO CHRISTY 8889R
MAGS XUKALANI
MAGS YOKO
MAGS Y-AXIS
TMCK CASUAL 28Y

Act. BW 79 - Adj. WW 597

CED	BW	WW	YW	MK	CEM	SC	DOC	YG	CW	REA	MB	\$MTI
12	1.4	75	120	31	6	1.18	14	-0.18	39	0.74	0.24	63.15
30%		30%	30%	10%	50%	30%	35%	45%	40%	40%		50%

30

SPRING CREEKS KALVING EASE

4/12/23 - LIM-FLEX(59/52.6) - DOUBLE POLLED - DOUBLE BLACK - LFM2797047 - VMIT 22L - BULL

WULFS GALLAGHER 7056G
SPRING CREEKS JUPITER 9147J
SPRING CREEKS GAME ONE 9147G

DJ EDISON
SL JUDE
SL FORTUNETELLER

WULFS XCELLSIOR X252X
WULFS EDWINNA 7056E
SPRING CREEKS ELESWHERE
WULFS IDOLDEE 7909E
PVF INSIGHT 0129
MAGS MISS ROXANNE 279M
MAGS ANTELOPE
SL SUKI'S DESTINY

Act. BW 76 - Adj. WW 683

CED	BW	WW	YW	MK	CEM	SC	DOC	YG	CW	REA	MB	\$MTI
12	-1.1	61	92	26	7	0.96	12	-0.17	28	0.75	0.2	57.03
30%	10%			40%	35%	50%		45%		40%		

Angus Bulls

LOTS 31-42

We are pleased to offer our deepest set of Angus bulls to date. We strive to breed Angus cattle that have a focus on genetic progress, implementing some of the best Angus AI sires in the country. Our Angus program has been built around an exceptional cow herd that are truly the "factory" of the bulls you see in this offering. Whether you are searching for a herd sire that will create exceptional replacements, progeny that will excel on the rail, or a combination of both, we feel we have a bull for your progressive operation.





SPRING CREEKS **Iconic** 9055



SPRING CREEKS **Do It Again** 7909

31

SPRING CREEKS **Iconic** 9055

3/27/23 - ANGUS - 20842777 - 9055 - BULL

MUSGRAVE 316 STUNNER
DB **Iconic** G95
DB MS DISCOVERY D13

JINDRA ACCLAIM
SPRING CREEKS TRAVELER 9055
SPRING CREEKS TRAVELER 1024

LD CAPITALIST 316
JINDRA 3RD DIMENSION
MCATL BLACKBIRD 831-1378
JINDRA BLACKBIRD LASSY 1111
VAR DISCOVERY 2240
VIN-MAR O'REILLY FACTOR
DB MS FINAL TOOL 4120
EXAR MISS TRAVELER 4265

Act. BW 84 • Adj. WW 694 • Adj. YW

CED	BW	WW	YW	MK	CEM	SC	DOC	CW	REA	MB
11	-0.4	70	129	30	9	0.85	24	52	0.55	1.31
15%	20%	30%	25%	25%	45%		25%	45%		10%

\$M 50 85% \$W 65 35% \$F 98 30% \$G 83 10% \$B 181 15% \$C 285 20%

This herd sire prospect is an absolute eye-catcher. Stout featured, long-bodied, wide-based, and is truly impressive when set into motion. He is sired by DB Iconic G95, a popular Angus A.I. sire we utilized in our herd due to his ability to transmit functionally correct and muscular phenotypes. His dam is Jindra Acclaim, this female has done a great job for us. On paper, Spring Creeks Iconic 9055 has exceptional growth with a 70 weaning weight and 129 yearling weight both traits rank in the top 30% of the breed.

32

SPRING CRKS **Do It Again** 7909

3/27/23 - ANGUS - 20842776 - 7909 - BULL

JINDRA ACCLAIM
SPRING CREEKS ACCLAIM 9040
RITA 8H73 OF RITA 5F25 TOTAL

MAR INNOVATION 251
WULFS IDOLDEE 7909E
WULFS IDOLDEE A4904B

JINDRA 3RD DIMENSION
CONNEALY IMPRESSION
JINDRA BLACKBIRD LASSY 1111
MAR FINAL KAHUNA 856
TC TOTAL 410
CONNEALY THUNDER
RITA 5F25 OF RITA 2V6 FD
WULFS IDOLDEE 2044

Act. BW 86 • Adj. WW 687 • Adj. YW

CED	BW	WW	YW	MK	CEM	SC	DOC	CW	REA	MB
6	0.7	64	118	29	13	0.27	28	49	0.51	0.55
	40%	50%	40%	30%	10%		10%			

\$M 60 65% \$W 59 55% \$F 104 20% \$G 46 60% \$B 150 40% \$C 255 45%

Study this attractive made herd sire prospect that combines rib and muscle to the highest degree. To the eye, Spring CRKS Do It Again 7909 is long-backed, big-bodied, muscular, and easy fleshing. Son of Spring Creeks Acclaim 9040, out of a MAR Innovation 251 daughter. This is a head-turning bull you'll want to have in your possession and no one else's!

33

SPRING CREEKS **ACCLAIM** 832

10/11/22 • ANGUS • 20849406 • 832 • BULL

JINDRA ACCLAIM
SPRING CREEKS ACCLAIM 9040
 RITA 8H73 OF RITA 5F25 TOTAL

EXAR NEW LOOK 2971
EXAR ENTENSE 832
 PAWS UP 9155 E ENTENSE

JINDRA 3RD DIMENSION
 BON VIEW NEW DESIGN 1407
 JINDRA BLACKBIRD LASSY 1111
 N BAR PRIMROSE 2424
 TC TOTAL 410
 SITZ ALLIANCE 6595
 RITA 5F25 OF RITA 2V6 FD
 SITZ EVERELDA ENTENSE 023

Act. BW 88 • Adj. WW 674 • Adj. YW 1312

CED	BW	WW	YW	MK	CEM	SC	DOC	CW	REA	MB
-----	----	----	----	----	-----	----	-----	----	-----	----

I+3 1.8 59 111 26 12 0.42 16 47 0.48 0.69
 20% 50%

\$M 40 95% \$W 50 80% \$F 105 20% \$G 54 45% \$B 159 30% \$C 246 55%

34

SPRING CREEKS **ACCLAIM** 6410

9/14/22 • ANGUS • 20849407 • 219 • BULL

JINDRA ACCLAIM
SPRING CREEKS ACCLAIM 9040
 RITA 8H73 OF RITA 5F25 TOTAL

WULFS UPSHOT 0689
SPRING CREEKS RITA 6410
 EXAR RITA 5592

JINDRA 3RD DIMENSION
 EXAR UPSHOT 0562B
 JINDRA BLACKBIRD LASSY 1111
 EXAR EMULATION 0689
 TC TOTAL 410
 DAMERON FIRST IMPRESSION
 RITA 5F25 OF RITA 2V6 FD
 DEER VALLEY RITA 9721

Act. BW 88 • Adj. WW 681 • Adj. YW 1319

CED	BW	WW	YW	MK	CEM	SC	DOC	CW	REA	MB
-----	----	----	----	----	-----	----	-----	----	-----	----

I+0 2.8 64 115 31 7 0.28 15 49 0.45 0.29
 50% 45% 20%

\$M 34 95% \$W 57 60% \$F 100 25% \$G 33 85% \$B 133 65% \$C 207 90%

35

SPRING CRKS **FAIR AND SQUARE**

9/10/22 • ANGUS • 20851377 • 421 • BULL

WOODHILL BLUEPRINT
MYERS FAIR-N-SQUARE M39
 MYERS MISS BEAUTY M136

DAMERON FIRST IMPRESSION
EXAR RITA 5592
 DEER VALLEY RITA 9721

CONNELLY CONFIDENCE PLUS
 SAV BRILLIANCE 8077
 WOODHILL EVERGREEN Z291-B233
 DAMERON NORTHERN MISS 3114
 CONNELLY THUNDER
 SAV FINAL ANSWER 0035
 MYERS MISS BEAUTY M476
 RITA 9128 OF 4R13 6807

Act. BW 78 • Adj. WW 712 • Adj. YW 1410

CED	BW	WW	YW	MK	CEM	SC	DOC	CW	REA	MB
-----	----	----	----	----	-----	----	-----	----	-----	----

I+2 2.4 63 108 23 4 0.48 16 38 0.53 0.36

\$M 59 65% \$W 58 55% \$F 91 45% \$G 37 80% \$B 128 70% \$C 225 75%

36

SPRING CREEKS **ACCLAIM** 1314

10/17/22 • ANGUS • 20849408 • 1314 • BULL

JINDRA ACCLAIM
SPRING CREEKS ACCLAIM 9040
 RITA 8H73 OF RITA 5F25 TOTAL

EXAR CONSENSUS 2310B
JUANA SAR 1314
 JUANA SAR 111

JINDRA 3RD DIMENSION
 CONNELLY CONSENSUS 2229
 JINDRA BLACKBIRD LASSY 1111
 EXAR PRINCESS 0234
 TC TOTAL 410
 GAR MC TOTAL J6002
 RITA 5F25 OF RITA 2V6 FD
 JUANA SAR 124

Act. BW 88 • Adj. WW 690 • Adj. YW 1294

CED	BW	WW	YW	MK	CEM	SC	DOC	CW	REA	MB
-----	----	----	----	----	-----	----	-----	----	-----	----

I+4 1.3 61 118 28 11 0.15 22 45 0.41 0.6
 40% 40% 25% 35% 65%

\$M 42 95% \$W 52 75% \$F 96 35% \$G 47 60% \$B 143 50% \$C 228 75%

37

SPRING CREEKS **ICONIC** 7214

3/18/23 • ANGUS • 20842779 • 7214 • BULL

MUSGRAVE 316 STUNNER
DB ICONIC G95
 DB MS DISCOVERY D13

EXAR DENVER 4686B
SPRING CREEKS RITA 7214
 EXAR RITA 5592

LD CAPITALIST 316
 EXAR DENVER 2002B
 MCATL BLACKBIRD 831-1378
 EXAR RITA 9029
 VAR DISCOVERY 2240
 DAMERON FIRST IMPRESSION
 DB MS FINAL TOOL 4120
 DEER VALLEY RITA 9721

Act. BW 87 • Adj. WW 690 • Adj. YW

CED	BW	WW	YW	MK	CEM	SC	DOC	CW	REA	MB
-----	----	----	----	----	-----	----	-----	----	-----	----

3 2.1 70 125 25 6
 75% 70% 30% 30% 60% 75%

\$M \$W 57 60% \$F 87 55% \$G \$B \$C

38

SPRING CREEKS **ICONIC** 9022

3/27/23 • ANGUS • 20842778 • 9022 • BULL

MUSGRAVE 316 STUNNER
DB ICONIC G95
 DB MS DISCOVERY D13

2S TOP TEN
SPRING CREEKS BANDO 9022
 LVLS MISS BANDO 775W

LD CAPITALIST 316
 AAR TEN X 7008 SA
 MCATL BLACKBIRD 831-1378
 2S 16 PROMPTITUDE 538-1231
 VAR DISCOVERY 2240
 SAV 5175 BANDO 0699
 DB MS FINAL TOOL 4120
 LVLS NEW DESIGN 775P

Act. BW 89 • Adj. WW 687 • Adj. YW

CED	BW	WW	YW	MK	CEM	SC	DOC	CW	REA	MB
-----	----	----	----	----	-----	----	-----	----	-----	----

6 1.2 71 130 27 5 1.16 20 48 0.6 1.01
 50% 30% 25% 45% 35% 45% 20%

\$M 48 90% \$W 61 45% \$F 99 30% \$G 71 20% \$B 170 20% \$C 268 35%

39

SPRING CREEKS **ICONIC** 59251

3/10/23 • ANGUS • 20842775 • 59251 • BULL

MUSGRAVE 316 STUNNER
DB **ICONIC G95**
DB MS DISCOVERY D13

WERNER WAR PARTY 2417
WULFS LUCY 5925C
ROYAL LUCY DRCC 9023W

LD CAPITALIST 316
CONNEALY ONWARD
MCATL BLACKBIRD 831-1378
BAAR USA LADY JAYE 489
VAR DISCOVERY 2240
SAV FINAL ANSWER 0035
DB MS FINAL TOOL 4120
THOMAS LUCY 0722

Act. BW 73 • Adj. WW 639 • Adj. YW

CED	BW	WW	YW	MK	CEM	SC	DOC	CW	REA	MB
-----	----	----	----	----	-----	----	-----	----	-----	----

I+8 0.6 70 125 31 7 1.68 21 45 0.54 1.05
35% 35% 30% 30% 20% 10% 40% 20%

\$M 58 70% \$W 71 20% \$F 84 60% \$G 69 20% \$B 153 40% \$C 257 45%

40

SPRING CRCKS **FAIR AND SQUARE**

3/12/23 • ANGUS • 20842773 • 1105 • BULL

WOODHILL BLUEPRINT
MYERS FAIR-N-SQUARE M39
MYERS MISS BEAUTY M136

SPRNG CRKS FOREVER 6EM3 4216
SPRNG CRKS ROSE 1105
RR REVOLUTION ROSE 6084

CONNEALY CONFIDENCE PLUS
RITO 6EM3 OF 4L1 EMBLAZON
WOODHILL EVERGREEN Z291-B233
SANDPOINT FOREVER LADY 4216
CONNEALY THUNDER
EXAR PREDICTABLE 4158
MYERS MISS BEAUTY M476
RR REVOLUTION ROSE 4161

Act. BW 87 • Adj. WW 675 • Adj. YW

CED	BW	WW	YW	MK	CEM	SC	DOC	CW	REA	MB
-----	----	----	----	----	-----	----	-----	----	-----	----

6 1.3 59 106 26 5 37 0.56 0.82
35%

\$M 71 30% \$W 52 75% \$F 89 50% \$G 60 35% \$B 149 45% \$C 264 40%

41

SPRING CREEKS **ACCLAIM** 1424

12/25/22 • ANGUS • 20842772 • 1424 • BULL

JINDRA ACCLAIM
SPRING CREEKS **ACCLAIM 9040**
RITA 8H73 OF RITA 5F25 TOTAL

SUMMITCREST COMPLETE 1P55
THOMAS PRIDE 21424
THOMAS PRIDE 7275

JINDRA 3RD DIMENSION
CF RIGHT DESIGN 1802
JINDRA BLACKBIRD LASSY 1111
SUMMITCREST ELBA 1M17
TC TOTAL 410
WOODHILL FORESIGHT
RITA 5F25 OF RITA 2V6 FD
THOMAS PRIDE 3452

Act. BW 73 • Adj. WW 687 • Adj. YW

CED	BW	WW	YW	MK	CEM	SC	DOC	CW	REA	MB
-----	----	----	----	----	-----	----	-----	----	-----	----

7 -0.1 54 100 31 11 0.42 20 47 0.54 0.75
45% 25% 20% 25% 45% 40%

\$M 39 95% \$W 54 70% \$F 98 30% \$G 56 40% \$B 154 35% \$C 239 65%

42

SPRING CREEKS **ICONIC** 503

3/20/23 • ANGUS • 20849409 • 503 • BULL

MUSGRAVE 316 STUNNER
DB **ICONIC G95**
DB MS DISCOVERY D13

CONNEALY BLACK GRANITE
MM MISSIE 503
PVF MISSIE 1076

LD CAPITALIST 316
CONNEALY CONSENSUS Z229
MCATL BLACKBIRD 831-1378
EURA ELGA OF CONANGA 9109
VAR DISCOVERY 2240
SOO LINE KODIAK 9194
DB MS FINAL TOOL 4120
PVF MISS RAPTOR 024

Act. BW 88 • Adj. WW 640 • Adj. YW

CED	BW	WW	YW	MK	CEM	SC	DOC	CW	REA	MB
-----	----	----	----	----	-----	----	-----	----	-----	----

8 1 61 108 25 8 1.05 24 41 0.53 1
35% 45% 40% 25% 20%

\$M 56 75% \$W 56 60% \$F 92 40% \$G 66 25% \$B 158 35% \$C 261 40%

CALVING EASE MEANS PROFIT

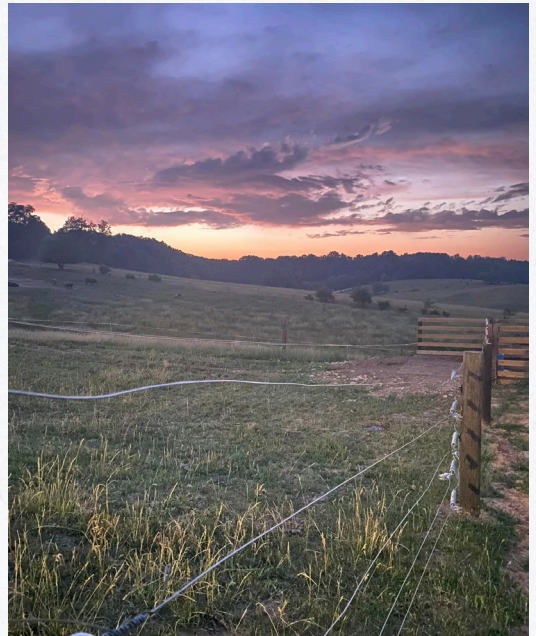
Calving-ease and calf vigor are traits upon which the cattle business was founded on in this country. Relative to growth, the Limousin and Angus breeds remain a calving-ease leader. Easy births not only allow cows the opportunity to breed back faster, but they also ultimately result in more pounds to sell at weaning. That said, we have made a concentrated effort to bring you a variety of bulls that excel in the beef industry's Number 1 profitability trait - calving-ease.



Bred & Open Heifers

LOTS 43-57

Without a doubt, this is an impressive offering of females. They come from the heart of the Spring Creek's replacement herd and are no doubt the kind that will earn the moniker of front-pasture females. Whether you are looking for stout-made, yet soggy purebred females, or Lim-Flex females with an extra show of maternal and marbling, these bred females are the type and kind to be foundation building blocks for the future. Bid with confidence, as the genetics backing this group of females are tried-and-true proven commodities in the Spring Creeks herd.



**SELLING 12 BRED HEIFERS &
3 OPEN HEIFERS**

Limousin • Lim-Flex



SPRING CREEK **JUPITER 9147J** SERVICE SIRE OF LOTS 43-50

43

SPRING CREEKS **KAY RAY** 2064K

4/15/22 • LIM-FLEX(50/43.6) • DOUBLE POLLED • BLACK • LFF2796614 • BMAS 2064K • COW

EXAR DENVER 2002B
EXAR DENVER 4686B
EXAR RITA 9029

FRDA SOMETHING ELSE 20S
FRDA 918U
FRDA NOSTALGIA 673N

EXAR UPSHOT 0562B
EXAR ROYAL LASS 1067
TC TOTAL 410
G A R 1407 NEW DESIGN 193
FRDA NONSTOP 33N
FRDA MACRAME 612M
WULFS GUARDIAN 5074G
FRDA POLLED DOLLBABY 193D

Act. BW 78 • Adj. WW

CED	BW	WW	YW	MK	CEM	SC	DOC	YG	CW	REA	MB	\$MTI
10	0.8	66	87	28	7	0.5	12	-0.23	39	0.89	0.3	62.27
	45%			25%	35%			30%	40%	20%	45%	

DUE 4/4 TO SPRING CREEK JUPITER 9147J

44

SPRING CRKS **KELLY GIRL** 2062K

4/14/22 • PUREBRED(100/88.2) • HOMO POLLED (P-1) • BLACK • NPF2796616 • BMAS 2062K • COW

WULFS BILLY THE KID K234B
WULFS DEVILS LAKE K118D ET
WULFS YOUR CHOICE 1419Y

LFLC ARBY 5027A
MISS SYES ARBY 241G
MISS SYES YUNT TO 841C

RUNL STETSON 850S
WULFS UNIQUE 8217U
WULFS UPPERMOST 6196U
WULFS SOLOIST 6284S
LFLC WINDFALL 56W
HOEL RIGAMAROLE
ROMN YUNT TO 109Y
MISS SYES NIGHT OWL 840S

Act. BW 88 • Adj. WW

CED	BW	WW	YW	MK	CEM	SC	DOC	YG	CW	REA	MB	\$MTI
3	4.2	60	92	26	-2	0.65	9	-0.52	24	1.16	0	52.56
				35%		40%		30%	50%	35%	40%	50%

DUE 4/1 TO SPRING CREEK JUPITER 9147J

45

SPRING CREEKS KATE 2066K

4/17/22 • PUREBRED(100/89.7) • HOMO POLLED (P-1) • RED • NPF2796617 • BMAS 2066K • COW

WULFS BILLY THE KID K234B
WULFS DEVILS LAKE K118D ET
WULFS YOUR CHOICE 1419Y

COLE BUSINESSMAN 104B
MISS SYES BUSINESSMAN 30E
MISS SYES SPACE SHIP 31W

RUNL STETSON 850S
WULFS UNIQUE 8217U
WULFS UPPERMOST 6196U
WULFS SOLOIST 6284S
RICHMOND YOGI SRD 7Y
COLE MISS PUREPOWER 809U
WULFS SPACE SHIP 3223S
MISS SYES NIGHT OWL 91S

Act. BW 91 • Adj. WW

CED	BW	WW	YW	MK	CEM	SC	DOC	YG	CW	REA	MB	\$MTI
4	3.7	67	102	27	1	1.15	10	-0.54	23	1.18	0.11	58.62
		45%	40%	30%		10%		25%		30%	15%	15%

DUE 4/12 TO SPRING CREEK JUPITER 9147J

46

SPRING CREEKS KITTY 2075K

4/23/22 • PUREBRED(87/77.8) • DOUBLE POLLED • DOUBLE BLACK • NPF2796618 • BMAS 2075K • COW

WULFS WILLARD 5115W
WULFS ENDEAVOR C703E
KEVN ZAMBIA 232Z

FRDB 22T
FRDA 967X
FRDA TAMMY SUE 830T

WULFS REVOLVER 1219R
WULFS REMI 5115R
S A V BRILLIANCE 8077
KEVN JOSIE 915J
WULFS NASA 1212N
FRDB RAGDOLL 748R
AUTO BLACK DAKOTA 129J
FRDA LORELEI 512L

Act. BW 87 • Adj. WW

CED	BW	WW	YW	MK	CEM	SC	DOC	YG	CW	REA	MB	\$MTI
9	2.1	66	96	27	5	0.47	15	-0.46	13	0.99	0.07	56.07
		45%		30%		20%					25%	30%

DUE 4/12 TO SPRING CREEK JUPITER 9147J

47

SPRING CREEKS KAT 2090K

5/2/22 • PUREBRED(100/86.1) • DOUBLE POLLED • HOMO BLACK (P-1) • NPF2796619 • BMAS 2090K • COW

CELL ENVISION 7023E
RMKR HERCULES 020H
RMKR YASMINE 128Y

LFLC ARBY 5027A
MISS SYES ARBY 26G
MISS SYES BACKSTAGE 824D

AHCC BARN BURNER B907
PBR5 ZSA ZSA 246Z
GTRB UNDERTAKER 6U
RMKR UNICORN 854U
LFLC WINDFALL 56W
HOEL RIGAMAROLE
SYES BACKSTAGE 466B
MISS SYES YUNT TO 823B

Act. BW 90 • Adj. WW

CED	BW	WW	YW	MK	CEM	SC	DOC	YG	CW	REA	MB	\$MTI
9	3.4	77	124	23	4	0.95	9	-0.39	45	1.18	-0.2	49.32
		10%	5%	65%		15%			3%	30%		

DUE 4/12 TO SPRING CREEK JUPITER 9147J

48

SPRING CRKS KIDDING ME 2092K

4/20/22 • PUREBRED(90/82.8) • HOMO POLLED (P-1) • BLACK • NPF2796621 • BMAS 2092K • COW

CELL ENVISION 7023E
L7 GENUINE VISION 9033G
MISS L7 567C

DLVL CANYON 546C
MISS SYES CANYON 253F
MISS SYES TRUCK 252Y

AHCC BARN BURNER B907
PBR5 ZSA ZSA 246Z
L7 ALL THE ANSWERS 3056A
MISS L7 323A
JYF ZEEK 151Z
DLVL MISS WORKHORSE 170Y
SY TRUCK 372T
MISS SYES NIGHT OWL 152T

Act. BW 94 • Adj. WW

CED	BW	WW	YW	MK	CEM	SC	DOC	YG	CW	REA	MB	\$MTI
2	5.3	72	116	21	2	0.97	16	-0.54	23	1.26	0.14	61.37
		25%	15%			15%	15%	25%	55%	15%	15%	10%

DUE 4/12 TO SPRING CREEK JUPITER 9147J

Docility & Calving Ease

Feed Efficiency & Carcass Merit

Improved Marbling

"Docility and calving ease are the two number-one things for a commercial rancher. And the docility of the Lim-Flex is really great. But calving ease is top of the line. She has to be able to produce a calf without a lot of problems."
- Shane Whiting, Commercial Cow/Calf Producer

"Using a Continental breed such as Limousin or Lim-Flex on a British-based cow herd gives you the best of both worlds – the maximum combination of a balance between gain, feed efficiency and carcass quality." - Dr. Kee Jim, CEO of Feedlot Health Management Services

"Genomic testing, breeder focus and the heritability of carcass traits have enabled all of us as seedstock producers to make rapid genetic gain in carcass quality. In fact, the marbling EPD value in our breed reflects an improvement of 0.25 to 0.35 for both Limousin and Lim-Flex, making them very comparable to other Continental breeds." - Dan Hunt, Commercial Cow/Calf Producer

Think **LIMOUSIN**



LIMOUSIN
NORTH AMERICAN LIMOUSIN FOUNDATION



LIM-FLEX
Limousin x Angus Hybrid



Limousin@NALF.org • 303-220-1693 • NALF.org • 6205 S Main Street, Suite D-280, Aurora, CO 80016
Find us on Facebook and Instagram @Limousin_NALF

2024 Bull & Female Sale

19

49

SPRING CREEKS 2181K

1/20/22 - HOMO POLLED - RED - BMAS 2181K - COW

WULFS XCELLSIOR X252X
WULFS GALLAGHER 7056G
WULFS EDWINNA 7056E

HUNT CREDENTIAL
SPRING CREEKS 0034H
SPRING CREEKS LASS 4057B

WULFS SIRLOIN 3172S
WULFS MISSIVE 2258M
BIEBER DEEP END B597
WULFS CALIBRI 5210C ET
HUNT TESTAMENT 40T
JKTW WHISKEY RIVER 985 W
LFIC ZEST 51Z
WOODHILL BLACKBIRD 26L-R216

Act. BW - Adj. WW

CED	BW	WW	YW	MK	CEM	SC	DOC	YG	CW	REA	MB	\$MTI
16.5	-2.5	62.5	96	35	9.5	0.95	16	-0.19	35	0.6	0.41	65.5

DUE 4/14 TO SPRING CREEK JUPITER 9147J

50

SPRING CREEKS KIDDING ME

4/23/22 - LIM-FLEX(62/57) - HOMO POLLED (P-3) - DOUBLE BLACK - LFF2796626 - BMAS 2073K - COW

WULFS WILLARD 5115W
WULFS ENDEAVOR C703E
KEVN ZAMBIA 232Z

EXAR CONSENSUS 1472B
SPRING CRKS CAPERBERRY 5113C
MAGS UR RAZZI

WULFS REVOLVER 1219R
WULFS REMI 5115R
S A V BRILLIANCE 8077
KEVN JOSIE 915J
CONNEALY CONSENSUS 7229
A & B KARIN 8123
AUTO DOLLAR GENERAL 122R
MAGS RAZZI

Act. BW 85 - Adj. WW

CED	BW	WW	YW	MK	CEM	SC	DOC	YG	CW	REA	MB	\$MTI
11	1	62	91	23	6	0.75	14	-0.25	26	0.83	0.3	61.52
40%	50%				50%		35%	25%		30%	45%	

DUE 4/12 TO SPRING CREEK JUPITER 9147J

51

SPRING CREEKS KIND COW 2034K

3/22/22 - LIM-FLEX(50/44.5) - HOMO POLLED (P-1) - HOMO BLACK (P-1) - LFF2796623 - BMIT 2034K - COW

RUNL YAHOO 164 Y
RUNL ENCORE 371 E
RUNL ALIZA 17 A

JINDRA ACCLAIM
SPRING CREEKS MISSIE 8034
MM MISSIE 503

COLE TOOLBOX 89T
RUNL ULTRASHARP 43U
RUNL XTRA-LOYAL 644 X
RUNL YALLA 1112 Y
JINDRA 3RD DIMENSION
JINDRA BLACKBIRD LASSY 1111
CONNEALY BLACK GRANITE
PVF MISSIE 1076

Act. BW 77 - Adj. WW

CED	BW	WW	YW	MK	CEM	SC	DOC	YG	CW	REA	MB	\$MTI
16	-1.7	75	117	24	9	0.71	15	-0.21	46	0.8	0.26	63.79
3%	10%	30%	35%		10%		20%	35%	20%	30%		45%

DUE 3/24 TO WULFS DIGITS 3786D

52

SPRING CREEKS KIND HEART

1/5/22 - LIM-FLEX(64/56.9) - HOMO POLLED (P-3) - HOMO BLACK (P-2) - LFF2603642 - BMIT 1401K - COW

RUNL STETSON 850S
WULFS CONVERSION 3970C
TMCK LANTERN 070A

MAGS ZODIAC
SPRING CRKS CRANBERRY
MAGS XANTHOPHYLL

JCL LODESTAR 27L
RUNL 72L
S A V ANGUS VALLEY 1867
TMCK LANTERN 46Y
MAGS WINSTON
MAGS XANTHOS
MAGS TEAL PAINT
EXLR LADY 5112N

Act. BW - Adj. WW

CED	BW	WW	YW	MK	CEM	SC	DOC	YG	CW	REA	MB	\$MTI
12	1.6	67	112	30	8	-0.05	12	-0.14	38	0.47	0.38	65.38
30%				45%	15%	20%			40%		30%	40%

DUE 3/24 TO B BAR BENTLEY 8D

53

SPRING CREEKS KAY LAY 2079K

4/23/22 - PUREBRED(87/78.3) - DOUBLE POLLED - DOUBLE BLACK - NPF2796615 - BMAS 2079K - COW

WULFS WILLARD 5115W
WULFS ENDEAVOR C703E
KEVN ZAMBIA 232Z

FRDA PHAROAH 32P
FRDA 937W
FRDA MADE IN HEAVEN 606M

WULFS REVOLVER 1219R
WULFS REMI 5115R
S A V BRILLIANCE 8077
KEVN JOSIE 915J
FRDA MAGNUS 12M
FRDA MAGNIFIQUE 575M
CHAZ FIRST CHOICE 6004F
HEAVEN'S HEART AND SOUL

Act. BW 89 - Adj. WW

CED	BW	WW	YW	MK	CEM	SC	DOC	YG	CW	REA	MB	\$MTI
10	0.8	56	80	25	6	0.3	12	-0.45	15	1.06	0.14	55.49
50%	45%			45%	50%			55%			15%	35%

DUE 3/24 TO RELENTLESS (RED ANGUS)

54

SPRING CREEKS KELLIE 2091K

4/20/22 - PUREBRED(90/81.7) - HOMO POLLED (P-1) - DOUBLE BLACK - NPF2796622 - BMAS 2091K - COW

CELL ENVISION 7023E
L7 GENUINE VISION 9033G
MISS L7 567C

WULFS XCLUSIVE 2458X
MISS SYES XCLUSIVE 187A
MISS SYES TRACKER 987U

AHCC BARN BURNER B907
PBR5 ZSA ZSA 246Z
L7 ALL THE ANSWERS 3056A
MISS L7 323A
WZRK PRIMESTAR 861P
WULFS MISSIVE 2258M
ROMN STORM TRACKER 101S
MISS SYES DUKE 987S

Act. BW 87 - Adj. WW

CED	BW	WW	YW	MK	CEM	SC	DOC	YG	CW	REA	MB	\$MTI
7	3.2	64	99	20	1	0.85	19	-0.47	22	1.01	0.01	53.5
				45%		25%	2%	50%			40%	45%

DUE 3/24 TO WULFS DIGITS 3786D

55

SPRING CREEKS **LOVELY ONE**

2/22/23 - PERCENTAGE(78/70.9) - DOUBLE POLLED - RED - NXF2604893 - LMIT 3014L - COW

WULFS GALLAGHER 7056G
WZRK JACK BLACK 9048J
 WZRK 9048G

WULFS ENDEAVOR C703E
SPRING CREEKS JOLLY 1033J
 SPRING CREEKS DARLENE 6168D

WULFS XCELLSIOR X252X
 WULFS EDWINNA 7056E
 CJSI DATA BANK 6124D ET
 WZRK MISS XTRACTOR 5044C
 WULFS WILLARD 5115W
 KEVN ZAMBIA 232Z
 DHVO DEUCE 132R
 AUTO EMMA 621X

Act. BW 67 • Adj. WW

CED	BW	WW	YW	MK	CEM	SC	DOC	YG	CW	REA	MB	\$MTI
14	-0.7	65	93	24	7		15	-0.27	32	0.89	0.23	60.1
20%	40%	30%	40%	40%			10%	30%		30%		50%

This daughter of WZRK Jack Black 9048J has all the pieces to be your next great foundation female in your breeding program. Her dam, Spring Creeks Jolly 1033J, is a beautiful 2-year-old daughter of WULFS Endeavor C703E. On paper, she has a well-balanced set of numbers. Be sure you study this ultra-complete breeding piece. She is also halter broke.

This one offers a ton of versatility, that you won't want to miss sale day!



SPRING CREEKS **LOVELY ONE**

56

SPRING CREEKS **LAVA GIRL** 3008

1/27/23 - PUREBRED(93/83.9) - DOUBLE POLLED - DOUBLE BLACK - NPF2565156 - BMAS 3008L - COW

WULFS BILLY THE KID K234B
WULFS EISENHOWER 3616E
 WULFS ABRIL 3616A

WULFS SIRLOIN 3172S
SPRING CREEKS GO GIRL 9014G
 SS MISS OVERTIME 727T

RUNL STETSON 850S
 WULFS UNIQUE 8217U
 WULFS X SIGN HERE X578X
 WULFS MYRENE 2332M
 COLE WOLF HUNT
 WULFS NEGOTIABLE 3172N
 HC OVERTIME 972
 GV MISS DEAL 2269M

Act. BW 85 • Adj. WW

CED	BW	WW	YW	MK	CEM	SC	DOC	YG	CW	REA	MB	\$MTI
10	2.5	74	112	33	7	0.94	15	-0.47	37	1.21	-0.04	54.67
50%		20%	20%	4%	35%	15%	20%	50%	15%	25%		40%

57

SPRING CREEKS **LEXI** 3012L

2/19/23 - PERCENTAGE(83/74.7) - HOMO POLLED - DOUBLE BLACK - NXF2604892 - BMAS 3012L - COW

WULFS COBRA 2662C
WULFS GENIUS 5293G
 WULFS CHARISMA 5293C

WULFS ENDEAVOR C703E
SPRING CREEKS JAM ON 1048J
 SPRNG CRKS YELLOW ROSE

WULFS XTRACTOR X233X
 MISS WULFETTE 2662Z
 WULFS ZOUAVE 8438Z
 WULFS ZESHULIA 2631Z
 WULFS WILLARD 5115W
 KEVN ZAMBIA 232Z
 WULFS WARRIOR 9302W
 EXLR PUDGE 735N

Act. BW 60 • Adj. WW

CED	BW	WW	YW	MK	CEM	SC	DOC	YG	CW	REA	MB	\$MTI
12	-1.6	65	93	28	9	0.5	16	-0.34	24	0.98	-0.04	50.75
45%	30%	30%	40%	10%	30%		5%	20%		25%		



REFERENCE SIRES



LFLC BANK ACCOUNT 701B



WULFS ENDEAVOR C703E



JBV YELLOWSTONE 901G



LFL JUNGLE JIM 1030J ET



WULFS EISENHOWER 3616E

Limousin Sires

AHCC CREED 5042C
 ATAK FUTURE ET
 EXAR DENVER 4668B
 FWLY LHC CAPITAL ET
 JBV YELLOWSTONE 901G
 L7 GENUINE VISION 9033G
 L7 HUMDINGER 0035H
 LFL JUNGLE JIM 1030J ET
 LFLC BANK ACCOUNT 701B
 MAGS GRIZZLY RUG 198G
 RMRK HERCULES 020H
 ROYAL JESTER RBGL 103J
 RUNL COMPASS 341 C
 RUNL ENCORE 371 E
 SPRING CREEKS CUTTING EDGE
 SPRING CREEKS GOLDEN EAGLE
 SPRING CREEKS JUPITER 9147J
 SYES EASY GOING 77E
 WULFS APOSTLE 1343A
 WULFS CONVERSION 3970C
 WULFS DEVILS LAKE K118D ET
 WULFS EISENHOWER 3616E
 WULFS ENDEAVOR C703E
 WULFS GALLAGHER 7056G
 WULFS GENIUS 5293G
 WZRK JACK BLACK 9048J

Sire

CJSL CREED 5042C
 TMCK ARCHITECT 031A
 EXAR DENVER 2002B
 MAGS CABLE
 AHCC EARNING POWER 900E ET
 CELL ENVISION 7023E
 CELL ENVISION 7023E
 COLE DEPUTY 37D
 WULF'S ZIPLOCK N922Z
 LVLS BANK ACCOUNT 8116B
 CELL ENVISION 7023E
 HUNT CREDENTIALS 37C ET
 MAGS ZARAH
 RUNL YAHOO 164 Y
 WULFS XCLUSIVE 2458X
 RPY PAYNES CRACKER 17E
 WULFS GALLAGHER 7056G
 COLE BUSINESSMAN 104B
 WULFS YANKEE K689Y
 RUNL STETSON 850S
 WULFS BILLY THE KID K234B
 WULFS BILLY THE KID K234B
 WULFS WILLARD 5115W
 WULFS XCELLSOR X252X
 WULFS COBRA 2662C
 WULFS GALLAGHER 7056G

Dam

AHCC MISS WAZOWSKI A318
 AUTO MOONSHINE 280B ET
 EXAR RITA 9029
 CLLL CRYSTAL 334W
 JBV GIRL CRUSH 422B
 MISS L7 567C
 MISS L7 514C
 AUTO BLISS 265Y
 LFLC 701X XTRA GOOD
 MAGS BETHANNIE
 RMRK YASMINE 128Y
 BOSS LAKE MS MOLLY 812F ET
 RUNL ZANS POLLY 161 Z
 RUNL ALIZA 17 A
 AUTO 623W
 AUTO TOPPER 688X
 SPRING CREEKS GAME ONE 9147G
 MISS SYES RAMSON 76X
 WULFS ULTRA DIAMOND 8571U
 TMCK LANTERN 070A
 WULFS YOUR CHOICE 1419Y
 WULFS ABRIL 3616A
 KEVN ZAMBRIA 232Z
 WULFS EDWINNA 7056E
 WULFS CHARISMA 5293C
 WZRK 9048G

CED	BW	WW	YW	MK	TM	CEM	SC	DOC	YG	CW	REA	MB	\$MTI
10	-0.5	61	111	29	60	8	0.5	9	0.01	29	0.5	0.54	68.48
12	-0.1	70	107	24	59	8	0.9	13	-0.13	36	0.73	0.5	70.34
10	0.2	84	104	26	68	10	1	9	0.04	69	0.71	0.5	72.75
14	2.4	75	118	28	66	8	1.2	12	-0.26	35	0.81	0.24	63.58
4	3.1	72	123	30	66	4	2.9	14	-0.33	46	1.03	0.25	63.77
2	5.3	78	129	24	63	0	1.6	26	-0.43	30	1.2	0.12	61.84
7	1.6	77	130	23	61	4	1.2	18	-0.41	50	1.39	-0.1	53.43
12	1.7	84	136	21	63	5	0	13	0.03	41	0.47	0.62	77.76
13	-1	52	72	20	45	9	-0.1	13	-0.5	2	0.85	-0.34	37.34
8	3.8	81	131	27	67	4	0.4	14	-0.01	54	0.61	0.4	69.26
7	3.5	96	148	23	71	5	1.2	12	-0.46	54	1.43	-0.23	54.36
9	1	55	80	34	61	7	0.82	13	-0.33	26	0.66	0.14	54.43
18	-0.6	84	124	26	68	8	0.9	15	-0.32	35	1.06	0.1	61.49
18	-1.7	72	105	23	58	8	0.5	15	-0.6	25	1.26	-0.02	55.82
9	-2.7	59	82	16	45	4	0.2	17	-0.39	18	0.77	0.08	53.89
8	-1.5	61	95	20	51	3	1.24	16	-0.29	40	0.83	0.1	54.38
14	-3.3	60	92	29	60	7	1.07	15	-0.16	28	0.8	0.2	56.76
19	-4.2	58	90	18	47	13	0.7	19	-0.58	18	1.29	-0.31	41.21
5	0.5	55	74	38	65	4	1.4	16	-0.59	12	1.5	-0.19	44.41
14	1.5	68	117	30	64	11	-0.6	14	-0.28	36	0.7	0.57	73.94
1	5.3	74	114	27	64	-2	0.6	22	-0.61	33	1.55	0.2	64.63
9	4.6	94	148	36	83	8	1.5	15	-0.32	55	1.14	0.04	62.59
10	1.5	65	93	26	59	4	0.6	17	-0.42	20	1.18	0.27	62.82
19	-4.9	57	84	25	54	9	0.7	15	-0.17	35	0.75	0.39	62.71
13	-2.4	70	101	27	62	11	0.4	14	-0.33	26	1.18	-0.24	45.18
18	-2.5	64	90	21	53	9	0.7	13	-0.22	39	0.82	0.32	62.55

Angus Sires

DB Iconic G95
 Spring Creeks Acclaim 9040
 Myers Fair-N-Square M39

Sire

Musgrave 316 Stunner
 Jindra Acclaim
 Woodhill Blueprint

Dam

DB Ms Discovery D13
 Rita 8H73 of Rita 5F25 Total
 Myers Miss Beauty M136

CED	BW	WW	YW	MK	TM	CEM	SC	DOC	YG	CW	REA	MB	\$MTI
6	1.3	85	150	24		5	1.52	23		61	0.54	1.75	
4	1.1	73	139	31		13	-0.24	23		68	0.49	0.71	
3	2.1	74	128	21		2	0.53	23		53	0.72	0.91	

Thank You

THANK YOU FOR TAKING TIME TO VIEW THE CATALOG AND ALLOWING US THE OPPORTUNITY TO EARN YOUR BUSINESS.

SALE AVERAGES

Number of Lots		Sale Gross	Sale Average
_____	Bulls	_____	_____
_____	Bred Heifers	_____	_____
_____	Open Heifers	_____	_____

NOTES





MC Marketing Management
648 West Sawgrass Trail
Dakota Dunes, SD 57049

Catalog Design By:
Mallory Blunier, Limousin Media

BULL & FEMALE SALE
Fennimore, Wisconsin
FEBRUARY 18, 2024



SALE @ 1:00 PM AT THE FENNIMORE LIVESTOCK EXCHANGE

springcreeksbart@gmail.com • www.springcreeksattle.com • 608-553-8070