

LINHART LIMOUSIN
**BUSINESS
DONE RIGHT**

Bull Sale

MARCH 2, 2024 • 1 P.M. CST
At The Farm • Leon, Iowa



**LINHART
LIMOUSIN**



LINHART LIMOUSIN BUSINESS DONE RIGHT

Bull Sale

MARCH 2, 2024 • 1 P.M. CST

At The Farm • Leon, IA

SCHEDULE:

10:00 a.m. Viewing Begins
Noon Complimentary Lunch
1:00 p.m. 2024 Business
Done Right Bull Sale

SELLING

74 Bulls
42 Yearlings
32 Fall Yearlings

ONLINE BIDDING AVAILABLE:



See page 20 for directions and assistance.

ANNOUNCEMENTS:

Announcements made sale day by the owners, auctioneer or sale management take precedence over statements in the sale catalog.

EPD INFORMATION:

All EPDs and performance information are in accordance with the North American Limousin Foundation as of January 24, 2024.

Bulls with genomically enhanced EPDs are denoted with **GE-EPDs**.

TRUCKING:

Free shipping will be available to central locations. Call Charles Linhart, 641-340-1306, to make arrangements.

TERMS:

Cattle sell under the standard sale terms and conditions of the North American Limousin Foundation. Payment may be made by cash or check due sale day.

SALE-DAY PHONES:

Charles Linhart..... 641-340-1306
Aaron Linhart 641-414-5060
Kiley McKinna 402-350-3447
Wiley Fanta 320-287-0751

SALE-SITE DIRECTIONS:

GPS Address:
19166 270th Ave. • Leon, Iowa
From Leon, travel 2 miles north to 190th St. Turn east, go 3 miles to 270th Ave.
Turn south, go 1/4 mile to sale facility on the east side.

AUCTIONEER:

Chisum Peterson..... 605-730-4214

CONSULTANT

Randy Ratliff, R&R Marketing 615-330-2735

LIVESTOCK PROFESSIONALS:

DeRon Heldermon, Special Assignment..... 405-850-5102
Scott Manley, Special Assignment..... 417-860-5250

ACCOMMODATIONS:

Lakeside Hotel & Casino..... 641-342-9511
777 Casino Dr., Osceola, Iowa 50213



SALE MANAGEMENT:

MC Marketing Management
Kiley McKinna 402-350-3447
Wiley Fanta 320-287-0751
mcmarketingsales@aol.com
www.mcmarketingmanagement.com

Five Family Prefixes Working for You

CJSL • CELL • ADLL • KVLN • KQLL

Limousin Friends & Enthusiasts,

It is our pleasure to invite you to the 9th edition of our "Business Done Right" Bull Sale, Saturday, March 2, 2024, at our sale facility near Leon, Iowa. We are a family operation just north of Leon in the heart of cow-calf country in southern Iowa. Our Limousin and Lim-Flex seedstock operation began in 1979 and has grown to nearly 600-producing females.



Over the years, we have worked hard to create a quality product and share in our customers' success while always doing things the right way.

We have brought you our very best in this offering. The bulls presented to you here have withstood the rigors of our stringent selection criteria. This group of 74 bulls consist of both spring yearlings and 18-month-old bulls. Like in years past, the influence of our premier donors, elite herd sires, progressive A.I. program and no "shortcuts" approach is evident in the bulls we are offering.

As you study the offering and evaluate the bulls as they relate to your overall production goals, we ask you to keep in mind the true "value" of a herd bull.

While we as an industry continue to enjoy excellent cattle prices relative to historical averages, the spread in value of genetically superior calves is at an all-time high. Regardless of whether you sell your calves at weaning at a sale barn, run them as yearlings or retain ownership throughout the feeding phase, buyers are becoming more selective to the types of calves that generate premiums. Factor in the long-term value of the females you retain, and reasons to purchase superior herd bulls becomes evident.

We are confident the bulls in this sale have the inherent genetic ability to sire market topping calves based on the comprehensive data supplied to you in this catalog. So rest assured, the product at hand is exceptional and will come to you at various price levels. Bid with confidence.

It's our goal to make all business transactions with customers a pleasant experience. In addition, all cattle sold are fully guaranteed to the catalog in accordance with the North American Limousin Foundation. Furthermore, if you would like to discuss our sight-unseen purchase program, financial arrangements or trucking plans we are happy to accommodate. As a reminder to both our existing and prospective bull buyers, we encourage you to check out our industry competitive "Linhart Bull Program" incentives that we have in place to stand behind this quality set of bulls.

We look forward to seeing you at the sale. Plan to join us for lunch. If we can be of any assistance to you prior to or during the sale, we have an open door policy and welcome all calls and questions. Don't hesitate to give us a call anytime.

Sincerely,

The Linhart Family
Linhart Limousin

LINHART LIMOUSIN

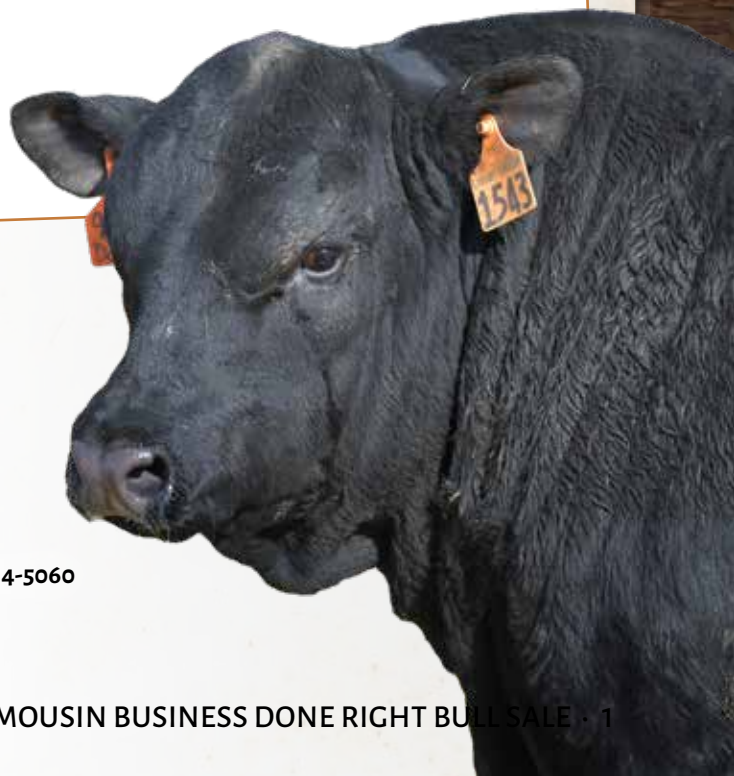
CHARLES & HEATHER LINHART

Aaron, Kyle & Kevin

27195 175TH STREET • LEON, IOWA 50144 • Charles 641-340-1306 • Aaron 641-414-5060

WWW.LINHARTLIMOUSIN.COM

Visit our website for videos and additional sale details.





LINHART LIMOUSIN
**BUSINESS
DONE RIGHT**

Bull Sale

SELLING 74

LIMOUSIN, LIM-FLEX & ANGUS BULLS
Yearlings and Fall Yearlings

OFFERING INCLUDES...

- 54** Homozygous Polled Bulls
- 60** Homozygous Black Bulls
- 46** Homozygous Black &
Homozygous Polled Bulls

FEATURED YEALING BULLS

LOTS 1-8



It is with great pride we present this impressive group of featured spring yearling bulls. With our aggressive AI and embryo transfer programs, we continuously push the genetic envelope while maintaining the same common-sense approach our commercial customer's demand. Fresh pedigrees and breed leading EPDs may have value in the marketplace, but if the bulls themselves lack the convenience traits all cattlemen strive for, they are of little worth. It is you, our customers, who will measure the success of our program. As we continue to fine tune our program to one capable of ensuring our customers remain profitable based on part of the genetics we supply, your feedback is not only welcomed, but appreciated.

LINHART LIMOUSIN

LIMOUSIN & LIM-FLEX BULLS



Lot 1

CELL LASTING IMPRESSION 3019L

1/3/2023 • Homo Black (P-1) • Homo Polled
LIM-FLEX(59/53.5) • CELL 3019L • LFM2797734

RLBH AIR FORCE ONE
FWLY CAN DO
CLLL CRYSTAL 334W

COLBURN PRIMO 5153
SSTO FANCY 8865F ET
RIVERSTONE CHARMED

EF XCESSIVE FORCE
EF YAFFA 821Y
WLR DIRECT HIT
AUTO CHRISTY 8889R
DAMERON FIRST CLASS
SILVEIRAS SARAS DREAM 1339
TMCK DURHAM WHEAT 6030X
HSF YOUR FANTASY

	CE	BW	WW	YW	MA	TM	CM	SC	DC	YG	CW	RE	MB	\$MI
EPD:	10	2.0	72	112	22	58	4	1.05	12	-0.10	45	0.72	0.23	61
%BANK:	55	75	40	45	80	60	85	35	65	20	45	60	60	

What an exceptional way to lead off this impressive offering! CELL Lasting Impression 3019L combines a notable pedigree, a balanced EPD profile and an eye-catching phenotype. CELL Lasting Impression 3019L is guaranteed to sire fast-growing calves, indicated by impressive weaning weight and yearling weight numerics! His sire, FWLY Can Do, has sired standout progeny across the country. Can Do transmits loose structure, depth of body, muscle expression and do-ability to his progeny. His dam, SSTO Fancy 8865F, was the top seller in Stowers Limousin Texas Tradition Sale VI commanding \$21,500 selling to Freed Livestock of Fairbury, Illinois. SSTO Fancy 8865F is out of the extremely successful Angus AI sire, Colburn Primo 5153, and from a cow that needs no introduction to the

LIMOUSIN & LIM-FLEX BULLS



LOT 1



FWLY CAN DO • Sire of Lot 1



Full sib to Lot 1



RIVERSTONE CHARMED • Maternal grandam to Lot 1

breed, Riverstone Charmed. She is the "Larissa" Ratliff show heifer that will go down in history as one of the greatest show females and donors of all time.

SEMEN OPPORTUNITY ABOUNDS!

- Investment Cost \$2,500
- 2 Year Exclusive Agreement
- Guarantee no semen will be offered on the marketplace from 3.1.24 to 3.1.26.
- Buyer receives up to 30 units per year for 2 years.

LIMOUSIN & LIM-FLEX BULLS



LOT 2

Lot 2

CELL LAW AND ORDER 3145L

3/18/2023 • Homo Black (P-1) • Homo Polled (P-1)
LIM-FLEX(65/58.3) • CELL 3145L • Pending

MAGS XYLOID
ELCX KINGS LANDING 599 D ET
WLR PRADA

DHIL COLT 5793C
MAGS GRETE 288G
MAGS BATHSHEBA

DHVO DEUCE 132R
BOHI RHONDA 314R
MACSWL USUAL SUSPECT 538U
AUTO REBECA 292S
PVF INSIGHT 0129
PBR5 TOUCH ME GENTLY 798T
MAGS YIP
EXC E839 1407 M175 LS

Act. BW • 87
Act. WW • 821

	CE	BW	WW	YW	MA	TM	CM	SC	DC	YG	CW	RE	MB	\$MI
EPI:	8	1.2	60	92	30	60	4	.6	9	-.17	42	.83	.09	53
%BANK:	85	55	85	90	15	50	85	80	95	45	30	30	90	95

Here is an absolute standout in the offering. CELL Law and Order 3145L is heavily muscled, ruggedly designed, big-bodied and sound on the move. His sire, ELCX Kings Landing 599 D, is known as one of the finest high percentage Limousin bulls in the industry. Law and Order has tremendous base width, center capacity and muscle expression. The donor dam is a maternal patterned DHIL Colt 5793C daughter purchased from Magness Land and Cattle. On paper, he ranks in the top 15% for milk paired with high rankings in numerous industry-relevant traits. CELL Law and Order 3145L has everything stacked in his favor!



ELCX KINGS LANDING 599 D ET • Sire of Lot 2

LIMOUSIN & LIM-FLEX BULLS



LOT 3

Lot 3
CELL LONGMIRE 3101L
 2/24/2023 • Het Black • Homo Polled (P-2)
 LIM-FLEX(56/50.6) • CELL 3101L • LFM2797731

Act. BW • 78
 Adj. WW • 747

MAGS CABLE
FWLY LHC CAPITAL ET
 CLLL CRYSTAL 334W

SILVEIRAS STYLE 9303
LLJB ABSOLUTE STYLE 3056A
 MAGS WASSAIL

MAGS APPLESEED
 MAGS ZEQUIN
 WLR DIRECT HIT
 AUTO CHRISTY 8889R
 GAMBLES HOT ROD
 SILVEIRAS ELBA 2520
 DHVO DEUCE 132R
 MAGS MANDA

	CE	BW	WW	YW	MA	TM	CM	SC	DC	YG	CW	RE	MB	\$MI
EPE:	13	0.8	62	96	28	59	8	1.10	11	-0.11	34	0.49	0.29	60
%BANK:	20	45	80	80	25	55	20	30	80	60	55	80	50	65

This guy is sure to be a crowd favorite sale day. Visually, CELL Longmire 3101L is heavily structured, level-topped and free moving off both ends with extra muscle expression. Sired by FWLY LHC Capital, the MAGS Cable son who is a maternal brother to FWLY Can Do. Capital caught the attention of many with his phenomenal power, impeccable structure, and alluring phenotype from his shoulders through his neck. His donor dam is LLJB Absolute Style 3056A, the female bred by Linhart Limousin and exhibited by Shelby Hennessy that took many titles including the 2014 North American International Livestock Exposition Champion Limousin Female banner. On paper, he offers impressive maternal traits, ranking in the top 10% for calving ease and calving ease maternal. Make no mistake and be sure to have him on the top of your list sale day.



LLJB ABSOLUTE STYLE 3056A • Dam of Lot 3

LIMOUSIN & LIM-FLEX BULLS



LOT 4

Lot 4

ADLL LINCOLN 3120L

3/7/23 · Homo Polled (P-1) · Homo Black (P-1)
LIM-FLEX(71/63.7) · ADLL 3120L · LFM2797730

MAGS XYLOID
ELCX KINGS LANDING 599 D ET
WLR PRADA

AUTO POWER PLUS 133B ET
AUTO CALLIE 403D ET
AUTO REBECA 292S

DHVO DEUCE 132R
BOHI RHONDA 314R
MACSWL USUAL SUSPECT 538U
AUTO REBECA 292S
EXAR DENVER 2002B
EF YADDA YADDA 809Y
LESF ASPHALT 9N
EXLR REBECA 1019P

Act. BW · 81
Adj. WW · 696

	CE	BW	WW	YW	MA	TM	CM	SC	DC	YG	CW	RE	MB	\$MI
EPD:	10	2.5	66	106	26	58	6	0.95	12	-0.18	28	0.59	0.04	53
%BANK:	55	85	65	60	40	60	50	50	65	45	75	65	95	95

Opportunity knocks! ADLL Lincoln 3120L brings a lot to the table for breeders. He is big boned, big bellied and awesome looking while still maintaining that masculine look our customer's demand. Sired by Kings Landing 599 D and out of the great AUTO Callie 403D donor, this bull has a pedigree backed by many purple banners. On paper, he offers a balanced, yet impressive EPD profile. He has the data and pedigree to do big things for your operation. Study this herd sire prospect and put him at the top of your list sale day.



AUTO CALLIE 403D ET · Dam of Lot 4

LIMOUSIN & LIM-FLEX BULLS



LOT 5



LOT 6

Lot
5

CELL LARAMIE 3129L
3/9/2023 • Homo Black (P-1) • Double Polled
PUREBRED(89/78.8) • CELL 3129L • Pending

Act. BW • 74
Act. WW • 736

AUTO LUCKY STRIKE 118B
AUTO LUCKY GUY 140D ET
AUTO REBECA 479A

TASF CROWN ROYAL 960C ET
TASF GUARDIAN ANGEL 300G
TASF ANGEL 612Y

LH U HAUL 135U
AUTO LUCKIE 246W
MAGS XYLOPOLIST
AUTO REBECA 292S

DHVO DEUCE 132R
TASF WHISKEY LULLABY 357W
EXLR NASDAQ 380R
DVFC ANGEL N WAITING 221M

	CE	BW	WW	YW	MA	TM	CM	SC	DC	YG	CW	RE	MB	\$MI
EPD:	7	4.4	76	112	24	62	3	.68	9	-.37	31	.86	.02	57
%RANK:	80	>95	15	20	55	25	90	40	85	80	25	85	35	25

Lot
6

CELL LAW MAKER 3020L
1/4/2023 • Homo Black • Homo Polled (P-2)
LIM-FLEX(50/44.4) • CELL 3020L • LFM2797735

Act. BW • 82
Adj. WW • 785

TASF CROWN ROYAL 960C ET
TASF HEINEKEN 405H ET
PLEASANT VALLEY ELSA 1439

SILVEIRAS STYLE 9303
LLJB ABSOLUTE STYLE 3056A
MAGS WASSAIL

DHVO DEUCE 132R
TASF WHISKEY LULLABY 357W
EXAR CLASSEN 1422B
CHERRY KNOLL ELSA 8014

GAMBLES HOT ROD
SILVEIRAS ELBA 2520
DHVO DEUCE 132R
MAGS MANDA

	CE	BW	WW	YW	MA	TM	CM	SC	DC	YG	CW	RE	MB	\$MI
EPD:	8	1.6	60	96	26	56	4	1.05	9	-0.05	33	0.46	0.31	60
%RANK:	85	65	85	80	40	75	85	35	95	80	60	85	45	65

Take note of this well-balanced individual that comes to you in a heavily muscled, black-hided, Purebred package. He is a highly usable and versatile AUTO Lucky Guy 140D son, a popular AI sire who continuously produces progeny that make their way to the winner's circle. His dam, TASF Guardian Angel 300G, had a storied show career including being named Grand Champion Limousin Female at the 2020 National Junior Limousin Show and Congress for Morgan Wise. Visually, CELL Laramie 3129L is phenotypically elite. The earning potential is all here, and we're excited to offer a bull of this nature and proven lineage. We think CELL Laramie 3129L does a lot of things right.

CELL Law Maker 3020L has a rugged phenotype with capacity and extra muscle expression. He is sired by TASF Heineken 405H, the top-selling \$44,500 lot in the 2021 Thomas & Son Farms New Year's Resolution Online Bull Sale. Study this bull's royal pedigree. This sire is flawless at the ground—big-footed, relaxed in his pasterns, long-striding and one that hits you hard when in motion. Law Maker inherited all these highly desirable traits. This homozygous polled herd sire prospect would be a great addition to your herd bull arsenal.

LIMOUSIN & LIM-FLEX BULLS



LOT 7



LOT 8

Lot
7

CELL LEGEND 3121L

3/7/2023 • Homo Black (P-1) • Horned
PERCENTAGE(84/75.9) • CELL 3121L • NXM2797739

RLBH AIR FORCE ONE
FWLY CAN DO
CLLL CRYSTAL 334W

TMCK DURHAM WHEAT 6030X
RIVERSTONE CHARMED
HSF YOUR FANTASY

EF XCESSIVE FORCE
EF YAFFA 821Y
WLR DIRECT HIT
AUTO CHRISTY 8889R
DHVO DEUCE 132R
MAGS STRAWBERRY PIE
MAGS WAR ADMIRAL
HSFTINKERBELL

Act. BW • 84
Adj. WW • 782

	CE	BW	WW	YW	MA	TM	CM	SC	DC	YG	CW	RE	MB	\$MI
EPD:	10	2.2	70	106	29	64	6	1.10	13	-0.20	40	0.95	0.03	54
%RANK:	70	85	20	20	10	10	75	20	25	40	40	25	90	80

Big-time growth bull here! CELL Legend 3121L is a big footed, big legged and big backed herd sire prospect that gets out and moves freely. These phenotypical advantages promise to translate into your calf crop the way you'd hoped. We project him to be the type of herd bull that produces well-balanced, stout calves year-in and year-out. His dam is Riverstone Charmed, the "Larissa" Ratliff female that has changed the breed forever. Notice, he ranks in the top 20% of the breed for weaning weight and yearling weight. He is a full sibling to Ratliff Jump Start 340], the past Cattlemen's Congress champion and current sire of many recent top-sellers.

Lot
8

CELL LEGACY 3134L

3/11/2023 • Homo Black (P-1) • Het Polled
PERCENTAGE(84/75.9) • CELL 3134L • NXM2797729

RLBH AIR FORCE ONE
FWLY CAN DO
CLLL CRYSTAL 334W

TMCK DURHAM WHEAT 6030X
RIVERSTONE CHARMED
HSF YOUR FANTASY

EF XCESSIVE FORCE
EF YAFFA 821Y
WLR DIRECT HIT
AUTO CHRISTY 8889R
DHVO DEUCE 132R
MAGS STRAWBERRY PIE
MAGS WAR ADMIRAL
HSFTINKERBELL

Act. BW • 84
Adj. WW • 704

	CE	BW	WW	YW	MA	TM	CM	SC	DC	YG	CW	RE	MB	\$MI
EPD:	10	2.2	70	106	29	64	6	1.10	13	-0.20	40	0.95	0.03	54
%RANK:	70	85	20	20	10	10	75	20	25	40	40	25	90	80

Here's one that promises to catch your attention! He is a son of Riverstone Charmed—a female that needs no introduction—she is the "Larissa" Ratliff show heifer that will go down in history as one of the greatest show females and donors of all time. There are too many banners won to report on a single page from maternal siblings. These cattle have impressed some of the most reputable cattlemen in the industry with their eye-catching profile and athletic ability. We appreciate this bull's incredible depth of body, rib shape and natural thickness. Full sibling to Lot 7 as well as to the red hot AI sire, Ratliff Jump Start 340].

YEARLING BULLS

LOTS 9-42



We can't help but feel immense pride for this set of bulls. Our annual aim is to introduce a set of herd sire prospects that outperform the previous calf crop. The bulls showcased here have successfully met our rigorous selection standards. Progressive AI and ET plays a role in showcasing the influence of our premier donors and elite herd sires. We approach producing seedstock in a no "shortcuts" manner. We have full confidence in the genetic capacity of these bulls to sire top-quality calves and replacement females for the front pasture. We are happy to accommodate any discussions regarding our sight-unseen purchase program, financial arrangements, or trucking plans. We highly recommend you explore the incentives available in our "Linhart Bull Program." We're here to help, so feel free to reach out to us with any questions or concerns.

LINHART LIMOUSIN

LIMOUSIN & LIM-FLEX BULLS



LOT 9



LOT 10

Lot 9

CELL LAMBERT 3098L
 02/22/2023 • Homo Black (P-2) • Homo Polled (P-1)
 LIM-FLEX(35/32.4) • CELL 3098L • NXM2796516

EBFL YPSILANTI 420Y	TC ABERDEEN 759
CELL DENALI 6405D	MAGS RAMADA
MAGS ANNIE	EXAR UPSHOT 0562B
	MAGS XEROMAS
BALDRIDGE COLONEL C251	BALDRIDGE XPAND X743
MAGS GLORIFY 223G	BALDRIGE ISABEL Y69
MAGS ENTERTAINING COWGIRL	MAGS CABLE COWBOY
	MAGS AILEEN

	CE	BW	WW	YW	MA	TM	CM	SC	DC	YG	CW	RE	MB	\$MI
EPD:	9	1.7	77	133	29	67	6	1.12	12	-.06	57	.68	.34	66
%BANK:	80	80	10	3	10	5	75	20	30	65	10	55	45	25

Pounds, pounds and more pounds! Here is a big, stout, wide-made, ruggedly designed, 35% Lim-Flex herd sire prospect that comes to us in a heavyweight package. If the name of the game is producing heavyweight calves at weaning or a year of age, this is the herd bull for you. Take note, he ranks in the top 3% for yearling weight and top 10% for weaning weight. This herd sire prospect will do big things for your next calf crop.

Lot 10

CELL LAST CALL 3096L
 02/20/2023 • Homo Black (P-1) • Homo Polled (P-1)
 PERCENTAGE(78/68.9) • CELL 3096L • NXM2796487

AHCC BARN BURNER B907	AHCC WESTWIND W544
CELL ENVISION 7023E	LVLS 9066U
PBRS ZSA ZSA 246Z	TW FIRE N' ICE
	PBRS ULL 854U
MAGS Y SO TANGLED	MAGS WINSTON
TMCK BOMBAY SAPPHIRE 096B	MAGS UNTANGLE
TMCK541Z	CL BURBANK
	WULFS SILVIA 6194S

	CE	BW	WW	YW	MA	TM	CM	SC	DC	YG	CW	RE	MB	\$MI
EPD:	7	2.9	83	137	27	69	4	1.1	17	-.24	53	1.12	.14	62
%BANK:	95	95	3	2	15	3	95	20	3	30	15	15	75	35

Looking for growth and carcass merit? Look no further than CELL Last Call 3096L. He posts a top 2% rank for yearling weight and top 3% for weaning weight and docility. Also, note his top 15% rankings for carcass weight and ribeye area. Study his length of body, level top and hindquarter dimension. Sired by CELL Envision 7023E and from a MAGS Y So Tangled daughter, this double homozygous son has a lot to offer to the winning bidder.

LIMOUSIN & LIM-FLEX BULLS



LOT 11



LOT 12

Lot 11 CELL LEONARD 3014L

1/2/2023 • Homo Black (P-1) • Homo Polled
LIM-FLEX(61/54.5) • CELL 3014L • LFM2797738

AUTO LUCKY STRIKE 118B
AUTO LUCKY GUY 140D ET
AUTO REBECA 479A

MAGS ALI
CELL FASCINATION 8231F ET
LLJB ABSOLUTE STYLE 3056A

LH U HAUL 135U
AUTO LUCKIE 246W
MAGS XYLOPOLIST
AUTO REBECA 292S
CONNELLY CONSENSUS 7229
MAGS YOKO
SILVEIRAS STYLE 9303
MAGS WASSAIL

Act. BW • 62
Adj. WW • 746

	CE	BW	WW	YW	MA	TM	CM	SC	DC	YG	CW	RE	MB	\$MI
EPD:	10	0.8	70	108	24	60	6	1.30	12	-0.15	33	0.61	0.17	59
%RANK:	55	45	50	55	60	50	50	15	65	50	60	60	75	75

This herd sire prospect is an absolute eye-catcher. Stout featured, long bodied and wide based perfectly describe him. His sire, AUTO Lucky Guy 140D, has progeny flooding the backdrops. They are known for having tremendous base width, center capacity and muscle expression. His donor dam is the well-known CELL Fascination 8231F, who's out of the extremely successful LLJB Absolute Style 3056A, a Silverias Style 9303 daughter that Shelby Hennessy of North Dakota campaigned in 2014 with major success. On paper, CELL Leonard 3014L posts a balanced set of EPDs. This homozygous polled Limflex is going to do big things for his new owner. Make that be you.

Lot 12 ADLL LESTER 3075L

02/14/2023 • Homo Black (P-3) • Homo Polled (P-1)
PERCENTAGE(77/68) • ADLL 3075L • NXM2796472

AHCC BARN BURNER B907
CELL ENVISION 7023E
PBRS ZSA ZSA 246Z

MAGS AVIATOR
KVLN 7108E
MAGS WALKIN

AHCC WESTWIND W544
LVLS 9066U
TW FIRE N' ICE
PBRS ULL 854U
MAGS WINSTON
MAGS XTRA REST
DHVO DEUCE 132R
BOHI RED ROBIN 282R

Act. BW • 87
Adj. WW • 864

	CE	BW	WW	YW	MA	TM	CM	SC	DC	YG	CW	RE	MB	\$MI
EPD:	8	2.1	82	137	21	62	4	1.27	19	-2	50	1.04	.14	62
%RANK:	90	85	3	2	65	15	95	15	1	40	20	20	75	40

If you are searching for a herd sire prospect that will add pounds, look no further than ADLL Lester 3075L. Explosive growth could be predicted due to his performance EPDs—his yearling weight ranks in the top 2% and his weaning weight ranks in the top 3% of the breed. His sire, CELL Envision 7023, has made a lasting impact on the breed. Lester's dam is a six-year-old MAGS Aviator daughter out of the MAGS Walkin donor female. Also, note his top 1% rank for docility. This combination of presence and numbers project him to be the type of herd bull that produces well-balanced, polled, stout calves year-in and year-out.

LIMOUSIN & LIM-FLEX BULLS



LOT 13



LOT 14

Lot 13

CELL LUTHER 3107L
 2/28/2023 • Homo Black (P-2) • Homo Polled (P-1)
 LIM-FLEX(46/41.9) • CELL 3107L • LFM2797733

EBFL YPSILANTI 420Y	TC ABERDEEN 759
CELL DENALI 6405D	MAGS RAMADA
MAGS ANNIE	EXAR UPSHOT 0562B
	MAGS XEROMAS
DHIL COLT 5793C	PVF INSIGHT 0129
MAGS GRETE 288G	PBR5 TOUCH ME GENTLY 798T
MAGS BATHSHEBA	MAGS YIP
	EXG E839 1407 M175 LS

	CE	BW	WW	YW	MA	TM	CM	SC	DC	YG	CW	RE	MB	\$MI
EPD:	9	2.5	76	126	26	64	5	0.90	10	-0.09	58	0.71	0.24	63
%RANK:	70	85	25	20	40	30	70	50	90	65	3	45	60	50

This heavyweight, homozygous polled, homozygous black Lim-Flex grabs your attention due to his length of body, wide top, hindquarter dimension and performance. His sire, CELL Denali 6405D, was a sale highlight in a past Linhart Limousin Bull Sale. His donor dam is the well-known MAGS Grete 288G, purchased from Magness Land and Cattle. On paper, Luther has exceptional carcass merit ranking in the top 2% for carcass weight. Don't miss this herd sire prospect that will add pounds and dollars to any operation.

Lot 14

CELL LOWELL 3079L
 02/16/2023 • Homo Black • Homo Polled (P-3)
 LIM-FLEX(46/41.5) • CELL 3079L • LFM2796474

V A R POWER PLAY 7018	BASIN PAYWEIGHT 1682
BRCC HIGHLIGHT REEL 0583H ET	SANDPOINT BLACKBIRD 8809
AUTO EXCEPTIONAL 282S	JCL LODESTAR 27L
	MINE PLD EXCEPTIONAL 981E
TMCK HYDRAULIC 17Y	S A V PIONEER 7301
TMCK ECHO 465E ET	HSF WALL OF FAME
TMCK BORDEAUX 095B	S A V PRIORITY 7283
	TMCK NINA 505Z

	CE	BW	WW	YW	MA	TM	CM	SC	DC	YG	CW	RE	MB	\$MI
EPD:	9	2.4	85	133	27	70	6	1.05	14	-.01	59	.74	.39	70
%RANK:	70	85	10	10	35	10	50	40	35	85	3	40	30	20

This bull is an absolute stand out. He is heavy muscled, ruggedly designed, big-bodied and sound on the move. He is a BRCC Highlight Reel 0583H son who catches your attention from across the pen. Numerically, this herd sire prospect ranks in the top 3% for carcass weight and top 10% for weaning and yearling weight—that is an impressive growth-oriented EPD set!

LIMOUSIN & LIM-FLEX BULLS



ELCX KINGS LANDING 599 D ET
Sire of Lots 15 & 16

PBRS GIFT 9217G ET
Dam of Lots 15 & 16



Lot
15

CELL LANCE 3011L
1/1/2023 • Homo Black • Homo Polled (P-3)
LIM-FLEX(70/62.6) • CELL 3011L • LFM2797737

Act. BW • 68
Adj. WW • 740

MAGS XYLOID
ELCX KINGS LANDING 599 D ET
WLR PRADA

CJSL DATA BANK 6124D ET
PBRS GIFT 9217G ET
AUTO CHAPERALL 406C ET

DHVO DEUCE 132R
BOHI RHONDA 314R
MAGSWL USUAL SUSPECT 538U
AUTO REBECA 292S
MAGS ANCHOR
AUTO CARMINDA 656S
S A V BRAND NAME 9115
AUTO REBECA 292S

	CE	BW	WW	YW	MA	TM	CM	SC	DC	YG	CW	RE	MB	\$MI
EPI:	10	1.4	68	100	24	57	6	0.68	13	-0.14	24	0.40	0.10	55
%BANK:	55	60	60	75	60	70	50	80	50	55	85	90	85	90

Lot
16

CELL LAYTON 3024L
1/5/2023 • Homo Black • Homo Polled (P-3)
LIM-FLEX(70/62.6) • CELL 3024L • LFM2797728

Act. BW • 84
Adj. WW • 702

MAGS XYLOID
ELCX KINGS LANDING 599 D ET
WLR PRADA

CJSL DATA BANK 6124D ET
PBRS GIFT 9217G ET
AUTO CHAPERALL 406C ET

DHVO DEUCE 132R
BOHI RHONDA 314R
MAGSWL USUAL SUSPECT 538U
AUTO REBECA 292S
MAGS ANCHOR
AUTO CARMINDA 656S
S A V BRAND NAME 9115
AUTO REBECA 292S

	CE	BW	WW	YW	MA	TM	CM	SC	DC	YG	CW	RE	MB	\$MI
EPI:	10	1.4	68	100	24	57	6	0.68	13	-0.14	24	0.40	0.10	55
%BANK:	55	60	60	75	60	70	50	80	50	55	85	90	85	90

Be sure to not overlook this wide-bodied, level-topped, thick-ended individual. His sire is ELCX Kings Landing 599 D, the sire of the \$105,000 top-selling female in our 2021 fall sale. His dam is a highly productive and maternal CJSL Data Bank 6124D daughter. This herd sire comes with a great look. Add this homozygous polled sire to your bull pen to create highly profitable calves.

Here is a homozygous polled herd sire prospect that is stout and wide. He is sired by ELCX Kings Landing 599 D, known as one of the finest high percentage Limousin bulls in the industry. His dam, PBRS Gift 9217G, is a female we purchased from P Bar S Ranch in Sand Springs, Oklahoma. Don't hesitate. You will want to be on the right side of the gavel for this one.

LIMOUSIN & LIM-FLEX BULLS



LLJB ABSOLUTE STYLE 3056A • Dam of Lots 17 & 18



TASF HEINEKEN 405H ET • Sire of Lot 17



FWLY LHC CAPITAL ET • Sire of Lot 18

Lot
17

CELL LAWSON 3022L
1/4/2023 • Homo Black • Homo Polled (P-2)
LIM-FLEX(50/44.4) • CELL 3022L • LFM2797736

<p>TASF CROWN ROYAL 960C ET TASF HEINEKEN 405H ET PLEASANT VALLEY ELSA 1439</p> <p>SILVEIRAS STYLE 9303 LLJB ABSOLUTE STYLE 3056A MAGS WASSAIL</p>	<p>DHVO DEUCE 132R TASF WHISKEY LULLABY 357W EXAR CLASSEN 1422B CHERRY KNOLL ELSA 8014 GAMBLES HOT ROD SILVEIRAS ELBA 2520 DHVO DEUCE 132R MAGS MANDA</p>
--	---

	CE	BW	WW	YW	MA	TM	CM	SC	DC	YG	CW	RE	MB	\$MI
EPD:	8	1.6	60	96	26	56	4	1.05	9	-0.05	33	0.46	0.31	60
%RANK:	85	65	85	80	40	75	85	35	95	80	60	85	45	65

Act. BW • 78
Adj. WW • 729

Lot
18

CELL LENNOX 3103L
2/26/2023 • Double Black • Homo Polled (P-2)
LIM-FLEX(56/50.6) • CELL 3103L • Pending

<p>MAGS CABLE FWLY LHC CAPITAL ET CLLL CRYSTAL 334W</p> <p>SILVEIRAS STYLE 9303 LLJB ABSOLUTE STYLE 3056A MAGS WASSAIL</p>	<p>MAGS APPELSEED MAGS ZEQUIN WLR DIRECT HIT AUTO CHRISTY 8889R GAMBLES HOT ROD SILVEIRAS ELBA 2520 DHVO DEUCE 132R MAGS MANDA</p>
--	--

	CE	BW	WW	YW	MA	TM	CM	SC	DC	YG	CW	RE	MB	\$MI
EPD:	14	2.1	72	108	27	64	9	1.1	9	-15	37	.6	.26	62
%RANK:	10	75	40	55	35	30	10	30	95	50	45	65	55	50

Act. BW • 78
Adj. WW • 672

This herd sire prospect's pedigree is one of the most successful and influential Limousin pedigrees in production today. His sire is TASF Heineken 405H, the top-selling \$44,500 lot in the 2021 Thomas & Son Farms New Year's Resolution Online Bull Sale. On top of that, his dam, LLJB Absolute Style 3056A, is the female bred by Linhart Limousin and exhibited by Shelby Hennessy that won a litany of banners and awards. This Lim-Flex has everything stacked in his favor—a flawless presence, captivating future and one heck of a proven pedigree. Bid with confidence.

CELL Lennox 3103L combines a fresh pedigree with a fantastic phenotype guaranteed to catch your eye. He is sired by FWLY LHC Capital, one of the most popular Lim-Flex AI sires in recent years. On paper, he ranks in top 10% of the breed for both calving ease and calving ease maternal. We think CELL Lennox 3103L does a lot right. Plus, he is heifer safe. Sleep better at night knowing Lennox is on the job.

LIMOUSIN & LIM-FLEX BULLS

Lot 19

ADLL LEROY 3135L
 3/12/23 · Homo Polled (P-1) · Homo Black (P-1)
 LIM-FLEX(71/63.7) · ADLL 3135L · LFM2797732

MAGS XYLOID
ELCX KINGS LANDING 599 D ET
 WLR PRADA

AUTO POWER PLUS 133B ET
AUTO CALLIE 403D ET
 AUTO REBECA 292S

DHVO DEUCE 132R
 BOHI RHONDA 314R
 MAGSWL USUAL SUSPECT 538U
 AUTO REBECA 292S

EXAR DENVER 2002B
 EF YADDA YADDA 809Y
 LESF ASPHALT 9N
 EXLR REBECA 1019P

Act. BW - 85
 Adj. WW - 701

GE-EPDs

	CE	BW	WW	YW	MA	TM	CM	SC	DC	YG	CW	RE	MB	\$MI
EPD:	10	2.5	66	106	26	58	6	0.95	12	-0.18	28	0.59	0.04	53
%RANK:	55	85	65	60	40	60	50	50	65	45	75	65	95	95

Lot 20

CELL LLOYD 3028L
 01/09/2023 · Het Black · Het Polled
 LIM-FLEX(56/49.9) · CELL 3028L · LFM2796438

ELCX KINGS LANDING 599 D ET
ELCX HIGH TIME 065H ET
 ELCX ELEVATE 684E ET

MUSGRAVE HEADWAY
CELL 0429H
 TMCK BLACK BETTY 143B

MAGS XYLOID
 WLR PRADA
 EF XCESSIVE FORCE
 DFCL HBHPC 1S

SCHIEFELBEIN ALLIED 514
 MUSGRAVE LADY BARBARA 524-57
 MAGS Y SO TANGLED
 MCBN TRANQUILLITY BROWN

Act. BW - 64
 Adj. WW - 750

	CE	BW	WW	YW	MA	TM	CM	SC	DC	YG	CW	RE	MB	\$MI
EPD:	13	-1	59	93	30	59	8	.81	14	.04	31	.12	.42	63
%RANK:	20	15	90	90	15	55	20	60	35	95	65	>95	25	50

Lot 21

CELL LAMAR 3029L
 01/13/2023 · Het Black · Het Polled
 PERCENTAGE(84/73.7) · CELL 3029L · NXM2796439

RLBH AIR FORCE ONE
FWLY CAN DO
 CLL CRYSTAL 334W

DHVO DEUCE 132R
CELL 5154C ET
 SENNETT HEATHER 448P

EF XCESSIVE FORCE
 EF YAFFA 821Y
 WLR DIRECT HIT
 AUTO CHRISTY 8889R
 GPFF BLAQUE RULON
 AMY JO DHAN 20L
 EXLR MODERATOR 053M
 SENNETT CINNAMON 802H

Act. BW - 81
 Adj. WW - 781

	CE	BW	WW	YW	MA	TM	CM	SC	DC	YG	CW	RE	MB	\$MI
EPD:	10	2	72	110	24	60	5	1.15	10	-.25	40	.94	-.02	53
%RANK:	70	80	15	20	40	20	85	20	65	30	45	25	90	80

Lot 22

KVLN LANE 3030L
 01/14/2023 · Homo Black · Homo Polled
 LIM-FLEX(60/54.3) · KVLN 3030L · LFM2796440

ELCX KINGS LANDING 599 D ET
ELCX HIGH TIME 065H ET
 ELCX ELEVATE 684E ET

MAGS CABLE
KVLN 0437H
 MAGS BLUSH ET

MAGS XYLOID
 WLR PRADA
 EF XCESSIVE FORCE
 DFCL HBHPC 1S

MAGS APPLESEED
 MAGS ZEQUIN
 EXAR UPSHOT 0562B
 WLR ELIXER

Act. BW - 76
 Adj. WW - 770

	CE	BW	WW	YW	MA	TM	CM	SC	DC	YG	CW	RE	MB	\$MI
EPD:	11	1.1	61	94	28	59	7	.89	13	-.09	26	.39	.34	62
%RANK:	40	50	85	85	25	55	35	60	50	65	80	90	35	60

Lot 23

CELL LINEMAN 3032L
 01/22/2023 · Double Black · Double Polled
 LIM-FLEX(56/50.8) · CELL 3032L · LFM2796441

ELCX KINGS LANDING 599 D ET
ELCX HIGH TIME 065H ET
 ELCX ELEVATE 684E ET

MAGS DODGE BALL
CELL 0472H
 CELL 8506F ET

MAGS XYLOID
 WLR PRADA
 EF XCESSIVE FORCE
 DFCL HBHPC 1S

ELMW XPEDIENT 4X
 MAGS ACTUAL HIGH
 AHCC COWBOY KIND C595 ET
 MAGS ZESTY

Act. BW - 74
 Adj. WW - 723

	CE	BW	WW	YW	MA	TM	CM	SC	DC	YG	CW	RE	MB	\$MI
EPD:	11	.7	65	102	28	60	6	.84	12	-.05	28	.36	.28	60
%RANK:	40	45	70	70	25	50	50	60	65	75	75	95	50	65

Lot 24

CELL LONNIE 3039L
 02/01/2023 · Homo Black · Homo Polled
 LIM-FLEX(53/47.1) · CELL 3039L · LFF2796447

AHCC DAKOTA THUNDER 363D
AHCC HIGH STAKES 376H
 AHCC MISS ROBIN A376

MAGS ALI
CELL 7228E ET
 MAGS AMERICAN BEAUTY

AHCC ANGUS VALLEY 911B
 AHCC MISS ROBIN A363
 MAGS UR A ROBIN
 AHCC MISS LAW DOG T776
 CONNEALY CONSENSUS 7229
 MAGS YOKO
 MAGS WINSTON
 MAGS SALINA

Act. BW - 84
 Adj. WW - 782

	CE	BW	WW	YW	MA	TM	CM	SC	DC	YG	CW	RE	MB	\$MI
EPD:	9	3.5	95	150	35	83	5	1.1	14	.01	54	.47	.42	74
%RANK:	70	95	1	2	1	1	70	30	35	90	10	80	25	10

Lot 25

CELL LOTAN 3048L
 02/06/2023 · Homo Black · Homo Polled
 LIM-FLEX(52/47.1) · CELL 3048L · LFM2796452

EBFL YPSILANTI 420Y
CELL DENALI 6405D
 MAGS ANNIE

TMCK CAMDEN YARDS 195C
CELL 7470E
 CELL 5410C ET

TC ABERDEEN 759
 MAGS RAMADA
 EXAR UPSHOT 0562B
 MAGS XEROMAS

TMCK ALFALFA 35X
 TMCK CASUAL AFFAIR 311A
 MAGS AVIATOR
 MAGS UNTANGLE

Act. BW - 83
 Adj. WW - 777

	CE	BW	WW	YW	MA	TM	CM	SC	DC	YG	CW	RE	MB	\$MI
EPD:	11	1.3	73	122	31	67	7	.81	12	-.05	50	.56	.21	60
%RANK:	40	55	35	25	10	15	35	60	65	75	10	70	65	65

Lot 26

CELL LEON 3052L
 02/07/2023 · Homo Black (P-3) · Homo Polled (P-3)
 LIM-FLEX(37/33.2) · CELL 3052L · LFM2796455

V A R POWER PLAY 7018
BRCC HIGHLIGHT REEL 0583H ET
 AUTO EXCEPTIONAL 282S

PVF INSIGHT 0129
CELL 9279G ET
 MAGS UR SALINA

BASIN PAYWEIGHT 1682
 SANDPOINT BLACKBIRD 8809
 JCL LODESTAR 27L
 MINE PLD EXCEPTIONAL 981E

S A V BRILLIANCE 8077
 PVF MISSIE 790
 LH RODMASTER 338R
 MAGS SALINA

Act. BW - 84
 Adj. WW - 810

	CE	BW	WW	YW	MA	TM	CM	SC	DC	YG	CW	RE	MB	\$MI
EPD:	9	2.2	83	135	29	70	6	1.05	13	-.09	66	1.06	.39	70
%RANK:	70	80	10	10	20	10	50	40	50	65	1	10	30	20

LIMOUSIN & LIM-FLEX BULLS

Lot 27

CELL LOUIS 3059L
02/10/2023 • Homo Black (P-2) • Homo Polled
LIM-FLEX(59/53.5) • CELL 3059L • LFM2796459

Act. BW • 75
Adj. WW • 807

RLBH AIR FORCE ONE
FWLY CAN DO
CLLL CRYSTAL 334W

S A V BRAND NAME 9115
CELL 5435C ET
EF YADDA YADDA 809Y

EF XCESSIVE FORCE
EF YAFFA 821Y
WLR DIRECT HIT
AUTO CHRISTY 8889R
S A V BISMARCK 5682
S A V BLACKCAP MAY 5530
DHVO DEUCE 132R
MAGS RUFFLES

	CE	BW	WW	YW	MA	TM	CM	SC	DC	YG	CW	RE	MB	\$MI
EPD:	12	.8	77	119	23	61	7	1.4	12	-.13	48	.77	.07	57
%RANK:	30	45	25	30	70	45	35	10	65	55	15	35	90	80

Lot 28

CELL LUCKY 3064L
02/11/2023 • Homo Black (P-2) • Het Polled
LIM-FLEX(53/47.5) • CELL 3064L • LFM2796463

Act. BW • 82
Adj. WW • 858

RLBH AIR FORCE ONE
FWLY CAN DO
CLLL CRYSTAL 334W

MUSGRAVE HEADWAY
CELL 9210G ET
EF XPECT THE BEST

EF XCESSIVE FORCE
EF YAFFA 821Y
WLR DIRECT HIT
AUTO CHRISTY 8889R
SCHIEFELBEIN ALLIED 514
MUSGRAVE LADY BARBARA 524-57
DHVO TREY 133R
VVLV BLACK LUCY 416R

	CE	BW	WW	YW	MA	TM	CM	SC	DC	YG	CW	RE	MB	\$MI
EPD:	12	1.7	76	117	30	68	8	1.1	12	-.03	44	.6	.3	64
%RANK:	30	70	25	35	15	15	20	30	65	80	25	65	45	45

Lot 29

CELL LAMAR 3068L
02/12/2023 • Homo Black • Het Polled
LIM-FLEX(68/59.5) • CELL 3068L • LFM2796466

Act. BW • 82
Adj. WW • 771

AHCC BARN BURNER B907
CELL ENVISION 7023E
PBRS ZSA ZSA 246Z

LVLS BANK ACCOUNT 8116B
CELL 8507F ET
MAGS UNSMUDGE

AHCC WESTWIND W544
LVLS 9066U
TW FIRE N' ICE
PBRS ULL 854U
MAGS WAZOWSKI
LVLS WILMA 8116W
DCC RITO 619 OF 6002 3J24
MAGS SMIDGEN

	CE	BW	WW	YW	MA	TM	CM	SC	DC	YG	CW	RE	MB	\$MI
EPD:	7	2.9	82	138	16	57	4	1.35	17	-.23	54	1.19	.22	65
%RANK:	90	90	10	10	>95	70	85	15	10	30	10	3	65	40

Lot 30

CELL LELAND 3066L
02/12/2023 • Double Black • Double Polled
LIM-FLEX(35/32.3) • CELL 3066L • LFM2796464

Act. BW • 81
Adj. WW • 841

AUTO HEAVY DUTY 174A
LVLS FULL DUTY 2201F
LVLS DARLA 2206D

CELL DENALI 6405D
CELL 0503H
CELL ELEGANT STYLE 7213E ET

MAGS WAZOWSKI
LVLS 3615W
S A V RESOURCE 1441
LVLS 798R
EBFL YPSILANTI 420Y
MAGS ANNIE
EF XCESSIVE FORCE
LJJB ABSOLUTE STYLE 3056A

	CE	BW	WW	YW	MA	TM	CM	SC	DC	YG	CW	RE	MB	\$MI
EPD:	10	2.7	83	141	27	68	6	1.82	10	.01	58	.52	.47	72
%RANK:	55	90	10	4	35	15	50	2	90	90	3	75	15	10

Lot 31

CELL LUCCA 3073L
02/13/2023 • Homo Black • Homo Polled (P-1)
LIM-FLEX(43/40.1) • CELL 3073L • LFM2796469

Act. BW • 92
Adj. WW • 775

EBFL YPSILANTI 420Y
CELL DENALI 6405D
MAGS ANNIE

PVF INSIGHT 0129
CELL 7542E ET
SENNETT HEATHER 448P

TC ABERDEEN 759
MAGS RAMADA
EXAR UPSHOT 0562B
MAGS XEROMAS
S A V BRILLIANCE 8077
PVF MISSIE 790
EXLR MODERATOR 053M
SENNETT CINNAMON 802H

	CE	BW	WW	YW	MA	TM	CM	SC	DC	YG	CW	RE	MB	\$MI
EPD:	8	3.2	78	130	31	70	4	1.05	10	-.18	53	.91	.12	60
%RANK:	85	95	20	15	10	10	85	40	90	45	10	20	85	65

Lot 32

CELL LEDGER 3072L
02/13/2023 • Homo Black (P-1) • Het Polled
LIM-FLEX(57/50.2) • CELL 3072L • LFF2796468

Act. BW • 85
Adj. WW • 788

MAGS FAULTLESS 154F
CHR HARD ROCKS 151H
CHR CRICKET 161C

DHVO DEUCE 132R
PBRS ZINK 62Z
LBAF SHAWNEE 602

TMCK CASH FLOW 247C
MAGS ANDRIA
MAGS EAGLE
AUTO SPITZ 289Z
GPFF BLAQUE RULON
AMY JO DHAN 20L
TWIN VALLEY PRECISION E161
SUNSET SHAWNEE 3905

	CE	BW	WW	YW	MA	TM	CM	SC	DC	YG	CW	RE	MB	\$MI
EPD:	8	3.1	92	146	26	72	4	1.45	13	.03	50	.52	.44	74
%RANK:	85	95	2	3	40	4	85	10	50	90	10	75	20	10

Lot 33

CELL LANDEN 3077L
02/15/2023 • Homo Black (P-2) • Homo Polled (P-2)
LIM-FLEX(52/46.6) • CELL 3077L • LFM2796471

Act. BW • 81
Adj. WW • 727

TASF CROWN ROYAL 960C ET
TASF HEINEKEN 405H ET
PLEASANT VALLEY ELSA 1439

MAGS AVIATOR
PBRS 676D ET
AUTO AJAY 206A

DHVO DEUCE 132R
TASF WHISKEY LULLABY 357W
EXAR CLASSEN 1422B
CHERRY KNOLL ELSA 8014
MAGS WINSTON
MAGS XTRA REST
S A V BRAVE 8320
MAGS MANUELA

	CE	BW	WW	YW	MA	TM	CM	SC	DC	YG	CW	RE	MB	\$MI
EPD:	6	3.0	66	108	25	58	4	0.80	11	-0.07	33	0.57	0.34	63
%RANK:	95	90	65	55	50	60	85	60	80	75	60	65	35	50

Lot 34

CELL LOUIE 3076L
02/15/2023 • Homo Black (P-1) • Homo Polled (P-1)
PERCENTAGE(76/66.1) • CELL 3076L • NXM2796473

Act. BW • 70
Adj. WW • 701

AHCC BARN BURNER B907
CELL ENVISION 7023E
PBRS ZSA ZSA 246Z

AHCC DIGGIN DEEP 903D ET
MAGS GOLD NUGGET 376G
MAGS COUSIN

AHCC WESTWIND W544
LVLS 9066U
TW FIRE N' ICE
PBRS ULL 854U
EBFL YPSILANTI 420Y
LVLS 9066U
RLBH AIR FORCE ONE
PBRS ALEAH 3113A

	CE	BW	WW	YW	MA	TM	CM	SC	DC	YG	CW	RE	MB	\$MI
EPD:	10	.5	79	131	18	57	7	1.93	18	-.15	54	1	.2	63
%RANK:	70	60	5	3	90	30	60	1	1	50	15	20	70	35

LIMOUSIN & LIM-FLEX BULLS

Lot 35

CELL LOYAL 3081L
02/16/2023 • Homo Black (P-3) • Homo Polled
LIM-FLEX(51/45.7) • CELL 3081L • LFM2796476

V A R POWER PLAY 7018
BRCC HIGHLIGHT REEL 0583H ET
AUTO EXCEPTIONAL 282S

MAGS EAGLE
DHIL EASY Z'S 7550E
DHIL ZAZIO 5508C

BASIN PAYWEIGHT 1682
SANDPOINT BLACKBIRD 8809
JCL LODESTAR 27L
MINE PLD EXCEPTIONAL 981E
MAGS WINSTON
MAGS WEB OF DECEIT
MAGS Y SO TANGLED
LH ZAZIO 508Z

Act. BW • 74
Adj. WW • 892

	CE	BW	WW	YW	MA	TM	CM	SC	DC	YG	CW	RE	MB	\$MI
EPD:	13	.2	75	123	27	64	8	.85	15	.08	52	.47	.45	68
%BANK:	20	30	30	25	35	30	20	60	20	>95	10	80	20	25

Lot 36

CELL LANGSTON 3080L
02/16/2023 • Homo Black (P-3) • Homo Polled
LIM-FLEX(71/62.5) • CELL 3080L • LFM2796475

AHCC BARN BURNER B907
CELL ENVISION 7023E
PBRS ZSA ZSA 246Z

MAGS AVIATOR
CELL 7009E
SSTO TIME TO SHINE 7857T

AHCC WESTWIND W544
LVLS 9066U
TW FIRE N' ICE
PBRS ULL 854U
MAGS WINSTON
MAGS XTRA REST
JCL LODESTAR 27L
CR C ERICA 3031N

Act. BW • 85
Adj. WW • 856

	CE	BW	WW	YW	MA	TM	CM	SC	DC	YG	CW	RE	MB	\$MI
EPD:	9	2.5	83	138	21	63	5	1.25	19	-.17	50	1.06	.18	63
%BANK:	70	85	10	10	85	35	70	20	1	45	10	10	70	45

Lot 37

CELL LINK 3082L
02/16/2023 • Homo Black (P-3) • Double Polled
LIM-FLEX(59/53.3) • CELL 3082L • LFM2796477

EBFL YPSILANTI 420Y
CELL DENALI 6405D
MAGS ANNIE

COLE ABSOLUTE 05A
CELL 7460E
MAGS YAKITEYAK

TC ABERDEEN 759
MAGS RAMADA
EXAR UPSHOT 0562B
MAGS XEROMAS
AHCC XPENSE ACCOUNT X516
COLE MISS TRAVELER 029X
DHVO DEUCE 132R
MAGS TEMPER

Act. BW • 78
Adj. WW • 776

	CE	BW	WW	YW	MA	TM	CM	SC	DC	YG	CW	RE	MB	\$MI
EPD:	10	1.1	74	128	24	61	6	1.15	11	-.11	51	.72	.21	61
%BANK:	55	50	35	15	60	45	50	30	80	60	10	45	65	60

Lot 38

CELL LEVI 3088L
02/17/2023 • Homo Black (P-2) • Homo Polled
LIM-FLEX(54/47.9) • CELL 3088L • LFF2796480

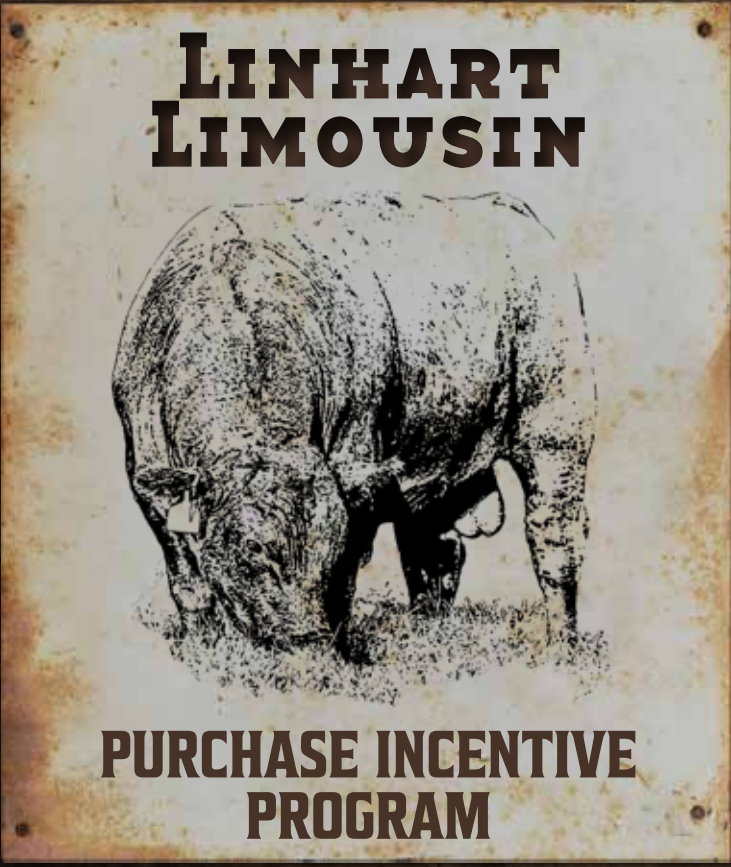
V A R POWER PLAY 7018
BRCC HIGHLIGHT REEL 0583H ET
AUTO EXCEPTIONAL 282S

TMCK ALFALFA 35X
TMCK ELLORY 498E
TMCK CRUMPET 220C

BASIN PAYWEIGHT 1682
SANDPOINT BLACKBIRD 8809
JCL LODESTAR 27L
MINE PLD EXCEPTIONAL 981E
S A V PIONEER 7301
TMCK JOYCE 570U
MAGS Y-AXIS
TMCK SUNSHINE 553Z

Act. BW • 80
Adj. WW • 803

	CE	BW	WW	YW	MA	TM	CM	SC	DC	YG	CW	RE	MB	\$MI
EPD:	11	1.6	80	126	26	65	8	.94	11	-.07	54	.83	.35	67
%BANK:	40	65	15	20	40	25	20	50	80	70	10	30	35	30



**LINHART
LIMOUSIN**

**PURCHASE INCENTIVE
PROGRAM**

- Guarantee...one-year unconditional breeding guarantee. We fully stand behind our product.
- Documentation...bulls come complete with ultrasound, performance data, herd health & registration.
- Financing Program...50% down at time of purchase, balance due on delivery.
- Housing...complimentary development until April 15.
- Trucking...we offer free delivery to central points.
- Volume Purchases...buy 5 or more bulls, receive a 5% discount; 10 or more bulls receive a 10% discount.
- Sight-Unseen Purchase Program...you tell us what you're looking for, we'll do our best to meet those needs, and if you're not satisfied when you get your bull(s), you don't own them.

LIMOUSIN & LIM-FLEX BULLS

Lot 39

CELL LEXINGTON 3094L
 02/19/2023 • Homo Black (P-3) • Homo Polled (P-2)
 LIM-FLEX(56/49.9) • ADLL 3094L • LFM2796486

V A R POWER PLAY 7018
BRCC HIGHLIGHT REEL 0583H ET
 AUTO EXCEPTIONAL 282S

ADLL AXL 3007A
CELL 7467E
 MAGS ZOON

BASIN PAYWEIGHT 1682
 SANDPOINT BLACKBIRD 8809
 JCL LODESTAR 27L
 MINE PLD EXCEPTIONAL 981E
 S A V NORTH DAKOTA 7451
 EF YADDA YADDA 809Y
 DHVO DEUCE 132R
 MAGS TOTSI

Act. BW • 81
 Adj. WW • 839

	CE	BW	WW	YW	MA	TM	CM	SC	DC	YG	CW	RE	MB	\$MI
EPD:	12	1.3	75	121	22	60	8	1.1	14	0	52	.61	.32	65
%RANK:	30	55	30	30	80	50	20	30	35	90	10	60	40	40

Lot 40

CELL LAZARO 3092L
 02/19/2023 • Homo Black (P-3) • Homo Polled
 LIM-FLEX(52/46.3) • CELL 3092L • LFM2796484

V A R POWER PLAY 7018
BRCC HIGHLIGHT REEL 0583H ET
 AUTO EXCEPTIONAL 282S

MAGS AVIATOR
CELL 9049G
 MAGS BURLESQUE

BASIN PAYWEIGHT 1682
 SANDPOINT BLACKBIRD 8809
 JCL LODESTAR 27L
 MINE PLD EXCEPTIONAL 981E
 MAGS WINSTON
 MAGS XTRA REST
 MAGS Y-AXIS
 MAGS TOTSI

Act. BW • 72
 Adj. WW • 806

	CE	BW	WW	YW	MA	TM	CM	SC	DC	YG	CW	RE	MB	\$MI
EPD:	14	-.4	70	112	28	63	10	.55	15	.02	48	.6	.45	67
%RANK:	10	20	50	45	25	35	5	85	20	90	15	65	20	30

Lot 41

CELL LANDON 3040L
 02/01/2023 • Homo Black (P-2) • Homo Polled
 LIM-FLEX(65/57.4) • CELL 3040L • LFM2796448

AHCC DAKOTA THUNDER 363D
AHCC HIGH STAKES 376H
 AHCC MISS ROBIN A376

LVLS CARTEL 1023C
PBRS 7116E
 SBLX ZERO TURN

AHCC ANGUS VALLEY 911B
 AHCC MISS ROBIN A363
 MAGS UR A ROBIN
 AHCC MISS LAW DOG T776

EF ZEN 344Z
 LVLS 4867W
 S A V BRILLIANCE 8077
 MAGS MANUELA

Act. BW • 81
 Adj. WW • 797

	CE	BW	WW	YW	MA	TM	CM	SC	DC	YG	CW	RE	MB	\$MI
EPD:	8	2	74	114	33	70	5	.35	13	-.18	40	.79	.28	64
%RANK:	85	75	35	40	3	10	70	95	50	45	35	35	50	45

Lot 42

CELL LACHLAN 3113L
 03/04/2023 • Homo Black (P-2) • Homo Polled (P-3)
 LIM-FLEX(46/42.6) • CELL 3113L • LFM2796521


EBFL YPSILANTI 420Y
CELL DENALI 6405D
 MAGS ANNIE

PVF INSIGHT 0129
CELL 7224E ET
 MAGS WRIGLEY

TC ABERDEEN 759
 MAGS RAMADA
 EXAR UPSHOT 0562B
 MAGS XEROMAS
 S A V BRILLIANCE 8077
 PVF MISSIE 790
 MAGS SASQUATCH
 BOHI REJOICE 308R

Act. BW • 88
 Adj. WW • 776

	CE	BW	WW	YW	MA	TM	CM	SC	DC	YG	CW	RE	MB	\$MI
EPD:	9	2.1	68	114	21	55	6	1	11	-.15	49	.68	.12	56
%RANK:	70	75	60	40	85	80	50	40	80	50	15	50	85	85



**LINHART
LIMOUSIN**

ONLINE BIDDING

DVAuction
Broadcasting Real-Time Auctions

**WATCH & BID ONLINE
FOR FREE AT DVAUCTION.COM**

Buying online is as easy as 1, 2, 3 ...

1. Create an account at www.dvauction.com under the "register" tab.
2. Apply for bidding approval by clicking on the "details" tab at least 24 hours prior to the auction—a DV representative will notify you once you have been approved.
3. Tune in for the sale and make your purchases! After the sale, contact the sale manager or owner to arrange transportation and payment. High speed internet is required for successful bidding. Be sure to check the lag-time monitor in the top left corner to ensure real-time broadcasts.

PROXY BIDDING: If you can't make time to watch the sale, register a proxy bid and let our system represent your bid while you're away. Look for the "proxy bid" tab on the auction listing, and fill in your maximum bids. We'll handle the rest!

Having troubles?
 During the auction, you can type a message to the operator at any time for assistance. Our full-time support team can also always be reached at 402.474.5557.

FALL YEARLING BULLS

LOTS 43-74



This group of stout, well-developed fall yearling bulls also excites us. Rest assured, these are not “left-overs” or “picked-throughs”. We provide a variety of genetic combinations in different age brackets as part of our comprehensive plan. A number of the same cow families and sire groups represented in our spring bulls are also found in their fall-born counterparts. Having developed these bulls with longevity in mind, we are confident they will stand the test of time and provide years of trouble-free service. We are confident these bulls will sire the kind of calves buyers seek. In the event a problem arises with your bulls when you get them home, we hope you will call us first.

LINHART LIMOUSIN

LIMOUSIN & LIM-FLEX BULLS



LOT 43



AHCC BARN BURNER B907 • Sire of Lot 43



CELL ENVISION 7023E • Full sib to Lot 43

Lot
43

CELL KING 2351K ET

09/04/2022 • Het Black • Homo Polled (P-3)
PUREBRED(87/75.7) • CELL 2351K • NPM2565977

Act. BW • 84
Adj. WW • 540
Adj. YW • 1182
Adj. REA • 11.4
Adj. IMF • 1.97
Adj. SC • 34.7

AHCC WESTWIND W544
AHCC BARN BURNER B907
LVLS 9066U

TW FIRE N' ICE
PBRS ZSA ZSA 246Z
PBRS ULL 854U

KAJO RESPONDER 120R
AHCC MISS WULF HUNT R544
LVLS FARMER JOHN 7428P
LVLS9066R

BOHI TITLELIST 7050T
MAGS UPPER SAUNTER
AUTO DOLLAR GENERAL 122R
MAGS REVA

	CE	BW	WW	YW	MA	TM	CM	SC	DC	YG	CW	RE	MB	\$MI
EPD:	8	3.4	82	130	18	59	6	1.1	15	-34	49	1.17	-.04	56
%RANK:	70	90	4	3	95	40	50	10	20	90	2	30	55	30

GE-EPDs

Here is a bull that deserves some serious attention. A full sibling to CELL Envision, one of the most legendary power bulls in the breed. Study his length of body, level top and hindquarter dimension. He is sired by AHCC Barn Burner B907, an AHCC WestWind W544 son. His donor dam is the well-known PBRS Zsa Zsa 246Z. This bull is nothing shy of impressive numerically. He ranks in the top 2% for carcass weight; top 3% for yearling weight and top 4% for weaning weight. This guy will put on the pounds and add on the dollars.

LIMOUSIN & LIM-FLEX BULLS



LOT 44



LOT 45

Lot 44

ADLL KILLIAN 2325K
 09/02/2022 • Homo Black (P-2) • Homo Polled (P-1)
 LIM-FLEX(59/53.3) • ADLL 2325K • LFM2527277

Act. BW • 88	EBFL YPSILANTI 420Y	TC ABERDEEN 759
Adj. WW • 780	CELL DENALI 6405D	MAGS RAMADA
Adj. YW • 1268	MAGS ANNIE	EXAR UPSHOT 0562B
Adj. REA • 14.46	DHVO DEUCE 132R	MAGS XEROMAS
Adj. IMF • 2.67	MAGS ZOON	GPFF BLAQUE RULON
Adj. SC • 36.7	MAGS TOTS1	AMY JO DHAN 20L
		AUTO DOLLAR GENERAL 122R
		HA PATSY 1121

EPD:	CE	BW	WW	YW	MA	TM	CM	SC	DC	YG	CW	RE	MB	\$MI
	9	2.7	81	132	27	67	7	1.05	12	-.04	52	.54	.13	60
%RANK:	70	90	15	15	35	15	35	40	65	80	10	70	80	65

This extra age herd sire prospect is a well-balanced individual. He comes to you in a heavily muscled, homozygous black, homozygous polled package. ADLL Killian 2325K is a highly usable and versatile CELL Denali 6405D son. Visually, ADLL Killian 2325K is phenotypically elite with an impressive EPD profile across the board. He ranks in the top 10% of the breed for carcass weight and the top 15% for weaning weight, yearling weight and total maternal. The earning potential is built in, and we're excited to offer a bull of this nature and proven lineage.

Lot 45

CELL KODA 2352K ET
 09/04/2022 • Homo Black (P-1) • Homo Polled (P-1)
 LIM-FLEX(28/25.2) • CELL 2352K • LFM2565430

Act. BW • 78	MAGS ZODIAC	MAGS WINSTON
Adj. WW • 852	MAGS EVEREST	MAGS XANTHOUS
Adj. YW • 1302	MAGS BOOK WORM	MAGS YIP
Adj. REA • 18.5	S A V RESOURCE 1441	EXG E839 1407 M175 LS
Adj. IMF • 2.47	COLEMAN DONNA 504	RITO 707 OF IDEAL 3407 7075
Adj. SC • 36.5	COLEMAN DONNA 714	S A V BLACKCAP MAY 4136
		CONNELLY ONWARD
		COLEMAN DONNA 386

EPD:	CE	BW	WW	YW	MA	TM	CM	SC	DC	YG	CW	RE	MB	\$MI
	11	.9	75	122	27	64	5	.7	14	.05	61	.72	.21	60
%RANK:	40	45	30	25	35	30	70	70	35	95	2	45	65	65

Here is a bull that deserves some serious attention. Study his length of body, level top and hindquarter dimension. His sire, MAGS Everest, has sired standout progeny across the country. Everest transmits loose structure, depth of body, muscle expression and do-ability to his progeny. His donor dam is one of the most prolific and influential Angus donors in production today. Coleman Donna 504 stems from the iconic Coleman Donna lineage—a novel could be written about the Donna dynasty and their contribution to the Angus breed. Coleman Donna 504 is one of the most captivating females you will ever lay your eyes on—don't miss the opportunity to own a son.

LIMOUSIN & LIM-FLEX BULLS



LOT 46



LOT 47

Lot 46

CELL KOHEN 2337K ET
 09/03/2022 • Homo Black (P-1) • Het Polled
 LIM-FLEX(50/42.1) • CELL 2337K • LFM2565435

Act. BW • 86	S A V PRESIDENT 6847	COLEMAN CHARLO 0256
Adj. WW • 735	S A V AMERICA 8018	S A V BLACKCAP MAY 4136
Adj. YW • 1189	S A V MADAME PRIDE 0075	SAF 598 BANDO 5175
Adj. REA • 15.68	TMCK DURHAM WHEAT 6030X	S A V MADAME PRIDE 8264
Adj. IMF • 2.135	WVRL FOREVER PRADA 310F ET	DHVO DEUCE 132R
Adj. SC • 37.7	WLR PRADA	MAGS STRAWBERRY PIE
		MAGSWL USUAL SUSPECT 538U
		AUTO REBECA 2925

CE BW WW YW MA TM CM SC DC YG CW RE MB \$MI

EPD:	8	1.7	76	115	22	60	1	1.18	18	-.02	47	.61	.07	56
%BANK:	85	70	25	40	80	50	>95	30	3	85	20	60	90	85

§9-EPDs

This herd sire prospect is an absolute eye-catcher—stout, long-bodied, wide-based and impressive when set into motion. He is sired by S A V America 8018, a popular Angus AI sire we have utilized in our herd due to his ability to transmit functionally correct phenotypes. His donor dam is WVRL Forever Prada 310F, owned by Davis Limousin Ranch. CELL Kohen 2337K is a polled, homozygous black Lim-Flex. Opportunity knocks.

Lot 47

CELL KASHTON 2441K
 09/29/2022 • Homo Black (P-2) • Homo Polled
 LIM-FLEX(50/44.1) • CELL 2441K • LFM2527372

Act. BW • 90	TASF CROWN ROYAL 960C ET	DHVO DEUCE 132R
Adj. WW • 758	TASF HEINEKEN 405H ET	TASF WHISKEY LULLABY 357W
Adj. YW • 1221	PLEASANT VALLEY ELSA 1439	EXAR CLASSEN 1422B
Adj. REA • 15.2	A A R TEN X 7008 S A	CHERRY KNOLL ELSA 8014
Adj. IMF • 3.515	SSTO CARLA 559C ET	MYTTY IN FOCUS
Adj. SC • 35.4	SSTO WATERCOLORS 9450W	A A R LADY KELTON 5551
		MAGS SAVAGE
		CARROUSELS PINA COLADA

CE BW WW YW MA TM CM SC DC YG CW RE MB \$MI

EPD:	7	2.7	71	118	27	62	5	1.05	9	-.13	43	.68	.39	67
%BANK:	90	90	45	35	35	40	70	40	95	55	25	50	30	30

This herd sire prospect will add performance and carcass advantages to any herd he is applied to. He has stout features and a rugged design. He is sired by TASF Heineken 405H, the top-selling \$44,500 lot in the 2021 Thomas & Son Farms New Year's Resolution Online Bull Sale. This herd sire prospect has all the pieces. Bid with confidence.

LIMOUSIN & LIM-FLEX BULLS



LOT 48



LOT 49

Lot 48

CELL KNOX 2230K ET
 02/04/2022 • Red • Homo Polled (P-2)
 LIM-FLEX(75/66.9) • CELL 2230K • LFM2522224

Act. BW • 82
 Adj. WW • 835
 Adj. YW • 1207
 Adj. REA • 14.76
 Adj. IMF • 2.13
 Adj. SC • 40.4

HUNT CREDENTIALS 37C ET
WZRK GAME CHANGER 4015G
 WZRK MISS TUFFENUFF 4015B

SILVEIRAS STYLE 9303
LLJB ABSOLUTE STYLE 3056A
 MAGS WASSAIL

HUNT TESTAMENT 40T
 JKTW WHISKEY RIVER 985 W
 ROMN TUFF ENUFF 103T
 WZRK MISS MTO 0010X
 GAMBLES HOT ROD
 SILVEIRAS ELBA 2520
 DHVO DEUCE 132R
 MAGS MANDA

\$GE-EPDs

	CE	BW	WW	YW	MA	TM	CM	SC	DC	YG	CW	RE	MB	\$MI
EPD:	8	1.4	74	114	32	69	6	1.7	13	-.05	49	.41	.42	68
%BANK:	85	60	35	40	5	10	50	3	50	75	15	90	25	25

CELL Knox 2230K is a son of LLJB Absolute Style 3056A, one of the greatest females of our time, not only in the show ring but also in production. His sire is the popular AI bull, WZRK Game Changer 4015G. His progeny have impressed some of the most reputable cattlemen in the industry with their eye-catching profile and athletic abilities when set into motion. Do not sleep on the opportunity to own this individual.

Lot 49

KQLL KAMERON 2393K
 09/12/2022 • Double Black • Double Polled
 LIM-FLEX(59/53.3) • KQLL 2393K • LFM2527331

Act. BW • 71
 Adj. WW • 702
 Adj. YW • 1152
 Adj. REA • 14.16
 Adj. IMF • 3.92
 Adj. SC • 36.4

MAGS ALI
CELL HIGH ROLLER 0239H ET
 MAGS UR SALINA

CELL 5137C ET
SRFZ GRACE
 ADLL 5351C ET

CONNEALY CONSENSUS 7229
 MAGS YOKO
 LH RODEMASTER 338R
 MAGS SALINA
 MAGS WINSTON
 AUTO TOOTSIE POP 2272T
 EF XCESSIVE FORCE
 EF YADDA YADDA 809Y

\$GE-EPDs

	CE	BW	WW	YW	MA	TM	CM	SC	DC	YG	CW	RE	MB	\$MI
EPD:	13	-.5	71	110	26	61	8	1.32	11	-.09	39	.52	.3	63
%BANK:	20	20	45	50	40	45	20	15	80	65	40	75	45	50

Study this attractively made herd sire prospect that combines rib and muscle to the highest degree. To the eye, KQLL Kameron 2393K is long backed, big bodied, muscular and easy fleshing. He boasts an impressive EPD profile that balances up well. This is a head-turning bull you will want to have in your possession!

ANGUS BULLS



LOT 50



COLEMAN CHARLO 0256 - Sire of Lot 50

Lot 50
CELL KINGSTON 2314J
 9/02/2022 · Homo Polled · Homo Black
 Angus (100) · 2314 · AAA20791228

Act. BW • 64
 Adj. WW • 735
 Adj. YW • 1198
 Act. SC • 36.5
 Adj. REA • 16.3
 Adj. IMF • 4.12

O C C PAXTON 730P
COLEMAN CHARLO 0256
 BOHI ABIGALE 6014

S A V RESOURCE 1441
COLEMAN DONNA 504
 COLEMAN DONNA 714

O C C FOCUS 813F
 O C C BLACKBIRD 736K
 SITZ TRAVELER 8180
 S A V ABIGALE 6062
 RITO 707 OF IDEAL 3407 7075
 S A V BLACKCAP MAY 4136
 CONNEALY ONWARD
 COLEMAN DONNA 386

	CE	BW	WW	YW	MA	CM	SC	DC	CW	RE	MB	\$W	\$B	\$C
EPD:	12	0.1	60	115	27	6	1.19	20	37	0.71	0.31	66	108	224
%BANK:	10	25	60	45	45	75	30	45	80	40	85	30	90	75

This double homozygous Angus herd sire prospect is sired by Coleman Charlo 0256, the cattlemen's kind and a breed changer for expansive rib shape, base width and muscle shape. Kingston's donor dam is Coleman Donna 504, one of the most prolific and influential Angus donors in production today. Coleman Donna 504 stems from the iconic and wildly successful Coleman Donna lineage—a novel could be written about the Donna dynasty and their contribution to the Angus breed as well as others. Coleman Donna 504 is one of the most captivating females you will ever lay your eyes on. CELL Kingston 2314J is ready to go to work for the winning bidder on March 2.

ANGUS BULLS



COLEMAN DONNA 504 · Dam of Lots 50-53 & 55

Lot 51

CELL KOWBOY 2322J

9/3/2022 · Homo Polled · Homo Black
Angus (100) · 2322 · AAA20791230

Act. BW · 87
Adj. WW · 902
Adj. YW · 1345
Act. SC · 38.5
Adj. REA · 16.5
Adj. IMF · 3.29

O C C PAXTON 730P
COLEMAN CHARLO 0256
BOHI ABIGALE 6014

S A V RESOURCE 1441
COLEMAN DONNA 504
COLEMAN DONNA 714

O C C FOCUS 813F
O C C BLACKBIRD 736K
SITZ TRAVELER 8180
S A V ABIGALE 6062
RITO 707 OF IDEAL 3407 7075
S A V BLACKCAP MAY 4136
CONNELLY ONWARD
COLEMAN DONNA 386

	CE	BW	WW	YW	MA	CM	SC	DC	CW	RE	MB	\$W	\$B	\$C
EPD:	12	0.1	60	115	27	6	1.19	20	62	1.06	0.21	66	132	255
%RANK:	10	25	60	45	45	75	30	45	25	10	95	30	60	45

Lot 52

CELL KALANI 2323J

9/2/2022 · Homo Polled · Homo Black
Angus (100) · 2323 · AAA20791234

Act. BW · 65
Adj. WW · 644
Adj. YW · 1059
Act. SC · 38
Adj. REA · 13.7
Adj. IMF · 3.11

ELLINGSON HOMESTEAD 6030
ELLINGSON THREE RIVERS 8062
EA EMBLYNETTE 6279

S A V RESOURCE 1441
COLEMAN DONNA 504
COLEMAN DONNA 714

CTS REMEDY 1T01
EA ERICA 1082
ELLINGSON CHAPS 4095
EA EMBLYNETTE 2159
RITO 707 OF IDEAL 3407 7075
S A V BLACKCAP MAY 4136
CONNELLY ONWARD
COLEMAN DONNA 386

	CE	BW	WW	YW	MA	CM	SC	DC	CW	RE	MB	\$W	\$B	\$C
EPD:	3	3.3	85	157	22	8	0.83	26	59	0.78	0.34	66	155	274
%RANK:	75	90	5	3	80	55	55	20	30	30	85	30	35	30

Lot 53

CELL KASEN 2338J

9/2/2022 · Homo Polled · Homo Black
Angus (100) · 2338 · AAA20791227

Act. BW · 61
Adj. WW · 671
Adj. YW · 1085
Act. SC · 38
Adj. REA · 14.3
Adj. IMF · 1.98

COLEMAN BRAVO 6313
COLEMAN TRIUMPH 9145
LAWSONS CHLOE C815

S A V RESOURCE 1441
COLEMAN DONNA 504
COLEMAN DONNA 714

COLEMAN CHARLO 0256
COLEMAN DONNA 714
S A V RENOWN 3439
LAWSONS CHLOE Z341
RITO 707 OF IDEAL 3407 7075
S A V BLACKCAP MAY 4136
CONNELLY ONWARD
COLEMAN DONNA 386

	CE	BW	WW	YW	MA	CM	SC	DC	CW	RE	MB	\$W	\$B	\$C
EPD:	13	0	66	125	21	8	0.84	35	48	0.76	0.04	61	124	247
%RANK:	10	25	45	30	85	55	55	1	55	35	95	45	75	55

Lot 54

CELL KINGSLEY 2341J

9/2/2022 · Homo Polled · Homo Black
Angus (100) · 2341 · AAA20791238

Act. BW · 85
Adj. WW · 737
Adj. YW · 1155
Act. SC · 37
Adj. REA · 11.9
Adj. IMF · 2.93

ELLINGSON THREE RIVERS 8062
ELLINGSON TURN KEY 0170
EA MISS BLACKBIRD 5054

S A V RENOWN 3439
LAWSONS CHLOE C815
LAWSONS CHLOE Z341

ELLINGSON HOMESTEAD 6030
EA EMBLYNETTE 6279
KOU PAL ADVANCE 28
EA MISS BLACKBIRD 3223
RITO 707 OF IDEAL 3407 7075
S A V BLACKCAP MAY 4136
SITZ UPWARD 307R
BASIN CHLOE 7T26

	CE	BW	WW	YW	MA	CM	SC	DC	CW	RE	MB	\$W	\$B	\$C
EPD:	0	3.6	88	154	27	8	0.68	20	67	0.75	0.35	78	156	293
%RANK:	90	95	3	3	45	55	65	45	15	35	85	10	35	15

Lot 55

CELL KREW 2350J

9/4/2022 · Homo Polled · Homo Black
Angus (100) · 2350 · AAA20791233

Act. BW · 82
Adj. WW · 731
Adj. YW · 1172
Act. SC · 37
Adj. REA · 13.3
Adj. IMF · 3.34

O C C PAXTON 730P
COLEMAN CHARLO 0256
BOHI ABIGALE 6014

S A V RESOURCE 1441
COLEMAN DONNA 504
COLEMAN DONNA 714

O C C FOCUS 813F
O C C BLACKBIRD 736K
SITZ TRAVELER 8180
S A V ABIGALE 6062
RITO 707 OF IDEAL 3407 7075
S A V BLACKCAP MAY 4136
CONNELLY ONWARD
COLEMAN DONNA 386

	CE	BW	WW	YW	MA	CM	SC	DC	CW	RE	MB	\$W	\$B	\$C
EPD:	12	0.1	60	115	27	6	1.19	20	43	0.70	0.22	66	113	231
%RANK:	10	25	60	45	45	75	30	45	70	45	95	30	90	70



LAWSONS CHLOE C815 · Dam of Lot 54

LIMOUSIN & LIM-FLEX BULLS

Lot 56

CELL KANNON 2313K ET
09/01/2022 • Homo Black (P-1) • Het Polled
LIM-FLEX(25/22.3) • CELL 2313K • LFM2565427

Act. BW • 83
Adj. WW • 770
Adj. YW • 1266
Adj. REA • 16.04
Adj. IMF • 2.165
Adj. SC • 36.3

MUSGRAVE BIG SKY
MUSGRAVE SKY HIGH 1535
FLAG QUEEN W 00649

DHVO DEUCE 132R
PBRS ZINK 62Z
LBAF SHAWNEE 602

CONNELLY EARNAN 076E
SAV PRIMROSE 7861
S A V 004 DENSITY 4336
PLATTEMERE QUEEN W 660
GPFF BLAQUE RULON
AMY JO DHAN 20L
TWIN VALLEY PRECISION E161
SUNSET SHAWNEE 3905 **GE-EPDS**

	CE	BW	WW	YW	MA	TM	CM	SC	DC	YG	CW	RE	MB	\$MI
EPD:	9	2.6	73	117	25	61	5	1.15	13	.07	43	.57	.14	57
%RANK:	70	85	35	35	50	45	70	30	50	95	25	70	80	80

Lot 57

CELL KEATON 2306K
09/01/2022 • Homo Black (P-3) • Double Polled
LIM-FLEX(51/46) • CELL 2306K • LFM2527275

Act. BW • 80
Adj. WW • 772
Adj. YW • 1210
Adj. REA • 12.64
Adj. IMF • 2.005
Adj. SC • 36

MAGS ALI
CELL HIGH ROLLER 0239H ET
MAGS UR SALINA

MAGS CABLE
CELL 9433G ET
MAGS XTRA REST

CONNELLY CONSENSUS 7229
MAGS YOKO
LH RODEMASTER 338R
MAGS SALINA
MAGS APPESEED
MAGS ZEQUIN
DHVO DEUCE 132R
MAGS UNREST

	CE	BW	WW	YW	MA	TM	CM	SC	DC	YG	CW	RE	MB	\$MI
EPD:	12	1.9	84	128	28	70	7	1.3	16	-.02	56	.6	.29	66
%RANK:	30	70	10	15	25	10	35	15	15	85	4	65	50	35

Lot 58

CELL KASE 2327K ET
09/02/2022 • Double Black • Homo Polled (P-2)
LIM-FLEX(50/44.8) • CELL 2327K • LFM2565428

Act. BW • 71
Adj. WW • 662
Adj. YW • 1154
Adj. REA • 13.66
Adj. IMF • 2.99
Adj. SC • 37.3

TMCK CASH FLOW 247C
TNGC EMPIRE 736E
MAGS BETH ET

SILVEIRAS STYLE 9303
LLJB ABSOLUTE STYLE 3056A
MAGS WASSAIL

MAGS ALI
TMCK NINA 17X
MAGS ZODIAC
MAGS THEATRICAL
GAMBLES HOT ROD
SILVEIRAS ELBA 2520
DHVO DEUCE 132R
MAGS MANDA **GE-EPDS**

	CE	BW	WW	YW	MA	TM	CM	SC	DC	YG	CW	RE	MB	\$MI
EPD:	9	2.2	83	138	25	66	4	1.3	17	.07	45	.3	.44	71
%RANK:	70	80	10	10	50	20	85	15	10	95	20	95	20	15

Lot 59

CELL KANAN 2333K ET
09/02/2022 • Homo Black (P-1) • Double Polled
LIM-FLEX(25/22.3) • CELL 2333K • LFM2565424

Act. BW • 89
Adj. WW • 746
Adj. YW • 1246
Adj. REA • 13.96
Adj. IMF • 2.93
Adj. SC • 38.7

MUSGRAVE BIG SKY
MUSGRAVE SKY HIGH 1535
FLAG QUEEN W 00649

DHVO DEUCE 132R
PBRS ZINK 62Z
LBAF SHAWNEE 602

CONNELLY EARNAN 076E
SAV PRIMROSE 7861
S A V 004 DENSITY 4336
PLATTEMERE QUEEN W 660
GPFF BLAQUE RULON
AMY JO DHAN 20L
TWIN VALLEY PRECISION E161
SUNSET SHAWNEE 3905 **GE-EPDS**

	CE	BW	WW	YW	MA	TM	CM	SC	DC	YG	CW	RE	MB	\$MI
EPD:	8	3.4	82	128	25	66	4	1.15	12	.09	56	.53	.31	66
%RANK:	85	95	10	15	50	20	85	30	65	>95	4	75	45	35

Lot 60

CELL KENDRIX 2320K ET
09/02/2022 • Het Black • Homo Polled
LIM-FLEX(65/58.1) • CELL 2320K • LFM2565433

Act. BW • 64
Adj. WW • 698
Adj. YW • 1206
Adj. REA • 14.96
Adj. IMF • 2.51
Adj. SC • 39.7

AHCC BARN BURNER B907
CELL ENVISION 7023E
PBRS ZSA ZSA 246Z

SAV 004 PREDOMINANT 4438
SENNETT 010X
SENNETT HEATHER 448P

AHCC WESTWIND W544
LVLS 9066U
TW FIRE N' ICE
PBRS ULL 854U
S A V 8180 TRAVELER 004
S A V EMBLYNETTE 1182
EXLR MODERATOR 053M
SENNETT CINNAMON 802H **GE-EPDS**

	CE	BW	WW	YW	MA	TM	CM	SC	DC	YG	CW	RE	MB	\$MI
EPD:	9	.1	75	127	23	61	6	1.75	13	-.12	59	.78	.32	66
%RANK:	70	30	30	20	70	45	50	3	50	60	3	35	40	35

Lot 61

CELL KIP 2342K ET
09/03/2022 • Homo Black • Het Polled
LIM-FLEX(65/58.1) • CELL 2342K • LFM2565429

Act. BW • 73
Adj. WW • 610
Adj. YW • 1077
Adj. REA • 16.68
Adj. IMF • 2.155
Adj. SC • 37.7

AHCC BARN BURNER B907
CELL ENVISION 7023E
PBRS ZSA ZSA 246Z

SAV 004 PREDOMINANT 4438
SENNETT 010X
SENNETT HEATHER 448P

AHCC WESTWIND W544
LVLS 9066U
TW FIRE N' ICE
PBRS ULL 854U
S A V 8180 TRAVELER 004
S A V EMBLYNETTE 1182
EXLR MODERATOR 053M
SENNETT CINNAMON 802H **GE-EPDS**

	CE	BW	WW	YW	MA	TM	CM	SC	DC	YG	CW	RE	MB	\$MI
EPD:	6	2.7	78	129	23	62	4	1.75	12	-.27	53	1.03	.2	63
%RANK:	95	90	20	15	70	40	85	3	65	25	10	10	65	50

Lot 62

CELL KELLER 2360K
09/06/2022 • Homo Black • Het Polled
LIM-FLEX(37/33.7) • ADLL 2360K • LFM2527290

Act. BW • 91
Adj. WW • 712
Adj. YW • 1166
Adj. REA • 13.24
Adj. IMF • 2.06
Adj. SC • 39.8

AUTO HEAVY DUTY 174A
LVLS FULL DUTY 2201F
LVLS DARLA 2206D

EXAR DENVER 2002B
ADLL 6694D ET
EF YADDA YADDA 809Y

MAGS WAZOWSKI
LVLS 3615W
S A V RESOURCE 1441
LVLS 798R
EXAR UPSHOT 0562B
EXAR ROYAL LASS 1067
DHVO DEUCE 132R
MAGS RUFFLES

	CE	BW	WW	YW	MA	TM	CM	SC	DC	YG	CW	RE	MB	\$MI
EPD:	11	2.6	83	140	24	65	7	1.85	11	-.05	57	.62	.5	74
%RANK:	40	85	10	5	60	25	35	2	80	75	4	60	15	10

Lot 63

CELL KENTON 2373K
09/07/2022 • Het Black • Homo Polled
LIM-FLEX(62/55.4) • CELL 2373K • LFM2527314

Act. BW • 76
Adj. WW • 635
Adj. YW • 1052
Adj. REA • 13.16
Adj. IMF • 2.565
Adj. SC • 37.3

MAGS ALI
CELL HIGH ROLLER 0239H ET
MAGS UR SALINA

ALTER EGO
DL GENTLE ON MY MIND 442G
CFLX MAYBELLE 560C ET

CONNELLY CONSENSUS 7229
MAGS YOKO
LH RODEMASTER 338R
MAGS SALINA
EF XCESSIVE FORCE
CJSL TEQUILA SUNRISE 7003
AHCC WESTWIND W544
EF XPECT THE BEST

	CE	BW	WW	YW	MA	TM	CM	SC	DC	YG	CW	RE	MB	\$MI
EPD:	12	.3	64	97	23	55	7	1.2	13	-.11	33	.54	.11	54
%RANK:	30	35	75	80	70	80	35	20	50	60	60	70	85	90

LIMOUSIN & LIM-FLEX BULLS

Lot 64

CELL KASPER 2382K
09/09/2022 • Homo Black (P-2) • Homo Polled (P-1)
LIM-FLEX(34/31) • CELL 2382K • LFM2527321

Act. BW • 81
Adj. WW • 713
Adj. YW • 1196
Adj. REA • 15
Adj. IMF • 2.575
Adj. SC • 36.3

EBFL YPSILANTI 420Y
CELL DENALI 6405D
MAGS ANNIE

D A TRAVELER 004 703
MAGS XTHORAS
MAGS THORA

TC ABERDEEN 759
MAGS RAMADA
EXAR UPSHOT 0562B
MAGS XEROMAS

SA V 8180 TRAVELER 004
ROSEWOOD ERICA 5010
KAJO RESPONDER 120R
HA BLACKCAP 1089

	CE	BW	WW	YW	MA	TM	CM	SC	DC	YG	CW	RE	MB	\$MI
EPD:	11	.9	69	114	27	61	7	1.2	11	.06	45	.39	.42	66
%RANK:	40	45	55	40	35	45	35	20	80	95	20	90	25	35

Lot 65

ADLL KNIGHT 2384K
09/09/2022 • Homo Black • Het Polled
LIM-FLEX(50/44.7) • ADLL 2384K • LFM2527322

Act. BW • 84
Adj. WW • 744
Adj. YW • 1182
Adj. REA • 17.2
Adj. IMF • 2.435
Adj. SC • 37

TASF CROWN ROYAL 960C ET
TASF HEINEKEN 405H ET
PLEASANT VALLEY ELSA 1439

SA V ANGUS VALLEY 1867
CELL 6699D ET
AUTO TOOTSIE POP 2272T

DHVO DEUCE 132R
TASF WHISKEY LULLABY 357W
EXAR CLASSEN 1422B
CHERRY KNOLL ELSA 8014
SA V IRON MOUNTAIN 8066
SA V MAY 2397
DHVO DEUCE 132R
EXLR MOLLY 7103K

	CE	BW	WW	YW	MA	TM	CM	SC	DC	YG	CW	RE	MB	\$MI
EPD:	7	2.2	71	114	23	59	4	1.12	10	-.23	20	.78	.28	64
%RANK:	90	80	45	40	70	55	85	30	90	30	95	35	50	45

Lot 66

CELL KENYON 2387K
09/10/2022 • Homo Black (P-3) • Homo Polled
LIM-FLEX(51/46) • CELL 2387K • LFM2527325

Act. BW • 85
Adj. WW • 771
Adj. YW • 1213
Adj. REA • 14.12
Adj. IMF • 2.43
Adj. SC • 36.4

MAGS ALI
CELL HIGH ROLLER 0239H ET
MAGS UR SALINA

MAGS CABLE
CELL 9473G ET
MAGS XTRA REST

CONNELLY CONSENSUS 7229
MAGS YOKO
LH RODEMASTER 338R
MAGS SALINA
MAGS APPLESEED
MAGS ZEQUIN
DHVO DEUCE 132R
MAGS UNREST

	CE	BW	WW	YW	MA	TM	CM	SC	DC	YG	CW	RE	MB	\$MI
EPD:	13	1.8	80	121	29	69	8	1.3	15	-.04	50	.59	.32	66
%RANK:	20	70	15	30	20	10	20	15	20	80	10	65	40	35

Lot 67

CELL KENWARD 2395K
09/12/2022 • Homo Black • Homo Polled
LIM-FLEX(60/53) • CELL 2395K • LFM2527333

Act. BW • 79
Adj. WW • 653
Adj. YW • 1099
Adj. REA • 15.06
Adj. IMF • 2.35
Adj. SC • 37.5

MAGS ALI
CELL HIGH ROLLER 0239H ET
MAGS UR SALINA

CJSL CREED 5042C
CELL 9586G
LVLS ZEBRA 9586Z

CONNELLY CONSENSUS 7229
MAGS YOKO
LH RODEMASTER 338R
MAGS SALINA
MAGS AVIATOR
CJSL 2090Z
AHCC WESTWIND W544
LVLS 9586S

	CE	BW	WW	YW	MA	TM	CM	SC	DC	YG	CW	RE	MB	\$MI
EPD:	10	1.2	67	110	27	60	7	.88	12	-.12	33	.68	.28	62
%RANK:	55	55	60	50	35	50	35	60	65	60	60	50	50	55

Lot 68

KQLL KEGAN 2411K
09/17/2022 • Homo Black • Homo Polled
LIM-FLEX(47/42.6) • KQLL 2411K • LFM2527347

Act. BW • 84
Adj. WW • 676
Adj. YW • 1118
Adj. REA • 12.56
Adj. IMF • 2.475
Adj. SC • 35.8

MAGS ALI
CELL HIGH ROLLER 0239H ET
MAGS UR SALINA

CJSL CREED 5042C
CELL 9535G
CELL 5734C ET

CONNELLY CONSENSUS 7229
MAGS YOKO
LH RODEMASTER 338R
MAGS SALINA
MAGS AVIATOR
CJSL 2090Z
EXAR DENVER 2002B
MAGS TEASPOON

	CE	BW	WW	YW	MA	TM	CM	SC	DC	YG	CW	RE	MB	\$MI
EPD:	11	1.7	69	113	25	60	8	.97	12	-.01	43	.41	.35	64
%RANK:	40	70	55	45	50	50	20	50	65	85	25	90	35	45

Lot 69

CELL KING KONG 2414K
09/19/2022 • Homo Black (P-3) • Homo Polled (P-3)
LIM-FLEX(43/38.8) • CELL 2414K • LFM2527349

Act. BW • 81
Adj. WW • 740
Adj. YW • 1128
Adj. REA • 13.6
Adj. IMF • 2.605
Adj. SC • 34.4

AHCC DAKOTA THUNDER 363D
AHCC HIGH STAKES 376H
AHCC MISS ROBIN A376

MUSGRAVE HEADWAY
CELL 9421G
MAGS UNBELIVABLE WISH

AHCC ANGUS VALLEY 911B
AHCC MISS ROBIN A363
MAGS UR A ROBIN
AHCC MISS LAW DOG T776
SCHIEFFELBEIN ALLIED 514
MUSGRAVE LADY BARBARA 524-57
LH RODEMASTER 338R
MAGS SIMPLE WISH

	CE	BW	WW	YW	MA	TM	CM	SC	DC	YG	CW	RE	MB	\$MI
EPD:	11	2	80	122	31	71	7	.75	13	0	41	.42	.36	67
%RANK:	40	75	15	25	10	10	35	70	50	90	35	90	35	30

Lot 70

CELL KIRKLIN 2424K
09/22/2022 • Homo Black • Homo Polled (P-2)
LIM-FLEX(50/44.3) • CELL 2424K • LFM2527358

Act. BW • 74
Adj. WW • 711
Adj. YW • 1140
Adj. REA • 15.66
Adj. IMF • 3.79
Adj. SC • 38.6

TASF CROWN ROYAL 960C ET
TASF HEINEKEN 405H ET
PLEASANT VALLEY ELSA 1439

EF XCESSIVE FORCE
TASF SPICE 052D
MAGS SUGAR N SPICE

DHVO DEUCE 132R
TASF WHISKEY LULLABY 357W
EXAR CLASSEN 1422B
CHERRY KNOLL ELSA 8014

D A TRAVELER 004 703
CFLX MOLLYS IMAGE
BR MIDLAND
MAGS MARQUEE

	CE	BW	WW	YW	MA	TM	CM	SC	DC	YG	CW	RE	MB	\$MI
EPD:	10	.3	63	99	21	52	6	1.27	10	-.06	29	.46	.39	64
%RANK:	55	35	80	75	85	90	50	20	90	75	75	85	30	45

Lot 71

CELL KEDRICK 2438K
09/27/2022 • Double Black • Homo Polled (P-2)
LIM-FLEX(62/55.4) • CELL 2438K • LFM2527398

Act. BW • 83
Adj. WW • 666
Adj. YW • 1158
Adj. REA • 16.06
Adj. IMF • 2.215
Adj. SC • 33.8

TASF CROWN ROYAL 960C ET
TASF HEINEKEN 405H ET
PLEASANT VALLEY ELSA 1439

COLE ARCHITECT 08A
CELL 8467F ET
AUTO MOONSHINE 280B ET

DHVO DEUCE 132R
TASF WHISKEY LULLABY 357W
EXAR CLASSEN 1422B
CHERRY KNOLL ELSA 8014
MRL X-RATED 014X
COLE MISS LODESTAR 826U
EXAR DENVER 2002B
EF YADDA YADDA 809Y

	CE	BW	WW	YW	MA	TM	CM	SC	DC	YG	CW	RE	MB	\$MI
EPD:	6	3.8	78	126	14	53	4	1.3	12	-.23	40	.93	.13	60
%RANK:	95	>95	20	20	>95	85	85	15	65	30	35	20	80	65

LIMOUSIN & LIM-FLEX BULLS



TASF HEINEKEN 405H ET • Sire of Lots 72, 73 & 74

Lot 72
CELL KNIGHTLY 2440K
 09/29/2022 • Homo Black • Homo Polled
 LIM-FLEX(50/44.3) • CELL 2440K • LFM2527371

Act. BW • 85
 Adj. WW • 644
 Adj. YW • 1119
 Adj. REA • 15.2
 Adj. IMF • 3.115
 Adj. SC • 34.9

TASF CROWN ROYAL 960C ET
TASF HEINEKEN 405H ET
 PLEASANT VALLEY ELSA 1439

PVF INSIGHT 0129
CELL 5036C ET
 EXLR MOLLY 605R

DHVO DEUCE 132R
 TASF WHISKEY LULLABY 357W
 EXAR CLASSEN 1422B
 CHERRY KNOLL ELSA 8014
 S A V BRILLIANCE 8077
 PVF MISSIE 790
 COLE MONTANA SKY 36M
 EXLR MOLLY 4139J

	CE	BW	WW	YW	MA	TM	CM	SC	DC	YG	CW	RE	MB	\$MI
EPD:	7	2.5	54	95	20	47	4	.9	8	-.19	32	.74	.16	54
%BANK:	90	85	>95	85	90	95	85	50	95	40	65	40	75	90

Lot 73
ADLL KINGDOM 2443K
 09/30/2022 • Double Black • Homo Polled
 LIM-FLEX(46/41.5) • ADLL 2443K • LFM2527373

Act. BW • 84
 Adj. WW • 705
 Adj. YW • 1101
 Adj. REA • 13.92
 Adj. IMF • 2.25
 Adj. SC • 35.5

TASF CROWN ROYAL 960C ET
TASF HEINEKEN 405H ET
 PLEASANT VALLEY ELSA 1439

MAGS ALI
CELL 8222F ET
 LLJB ABSOLUTE STYLE 3056A

DHVO DEUCE 132R
 TASF WHISKEY LULLABY 357W
 EXAR CLASSEN 1422B
 CHERRY KNOLL ELSA 8014
 CONNEALY CONSENSUS 7229
 MAGS YOKO
 SILVEIRAS STYLE 9303
 MAGS WASSAIL

	CE	BW	WW	YW	MA	TM	CM	SC	DC	YG	CW	RE	MB	\$MI
EPD:	7	2.8	68	105	26	60	4	1.45	10	-.05	37	.36	.21	59
%BANK:	90	90	60	65	40	50	85	10	90	75	45	95	65	75

Lot 74
CELL KNACK 2450K
 10/05/2022 • Homo Black (P-2) • Homo Polled (P-3)
 LIM-FLEX(53/47.3) • CELL 2450K • LFM2527406

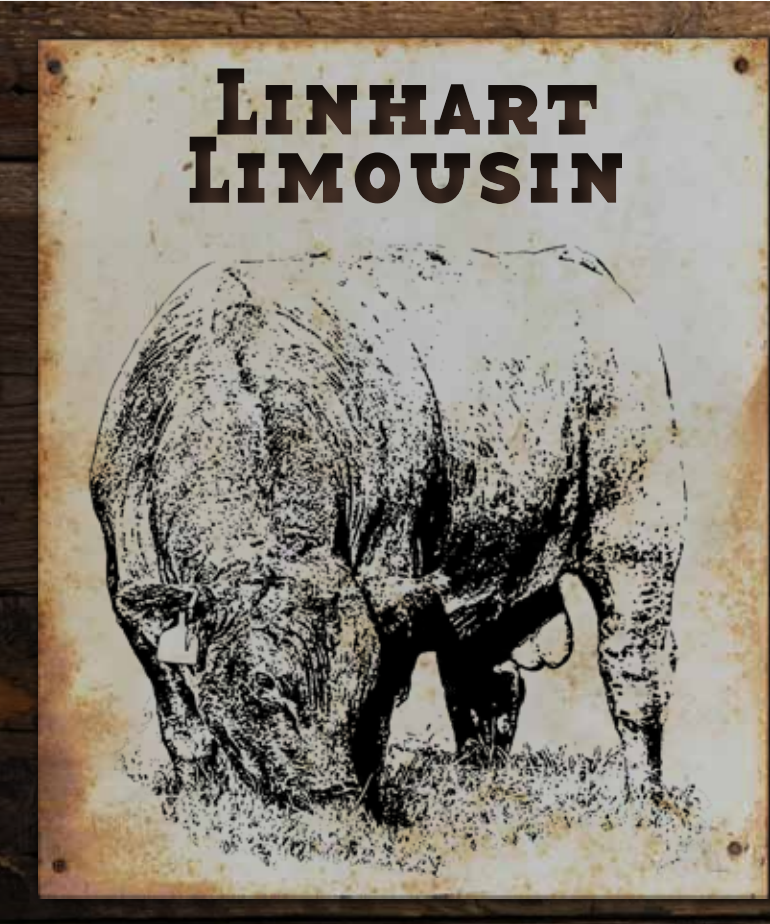
Act. BW • 91
 Adj. WW • 795
 Adj. YW • 1233
 Adj. REA • 16.72
 Adj. IMF • 4.045
 Adj. SC • 38.2

TASF CROWN ROYAL 960C ET
TASF HEINEKEN 405H ET
 PLEASANT VALLEY ELSA 1439

MAGS ZODIAC
MAGS BETH ET
 MAGS THEATRICAL

DHVO DEUCE 132R
 TASF WHISKEY LULLABY 357W
 EXAR CLASSEN 1422B
 CHERRY KNOLL ELSA 8014
 MAGS WINSTON
 MAGS XANTHOUS
 KAJO RESPONDER 120R
 FINKS BEAUTY 373 1134 416

	CE	BW	WW	YW	MA	TM	CM	SC	DC	YG	CW	RE	MB	\$MI
EPD:	6	3.3	75	126	23	61	1	1	13	-.03	33	.5	.53	72
%BANK:	95	95	30	20	70	45	>95	40	50	80	60	80	10	10



VOLUME PURCHASES

Buy 5 or more bulls, receive a 5% discount;
 10 or more bulls receive a 10% discount.

BULLS FOR EVERY BUDGET

- \$3,000 to \$3,499 - 17%
- \$3,500 to \$4,249 - 26%
- \$4,250 to \$4,999 - 32%
- \$5,000 and up - 25%

Linhart BULL BATTERY

LIMOUSIN & LIM-FLEX SIRES

BULL	SIRE	DAM	CE	BW	WW	YW	MA	TM	CM	SC	DC	YG	CW	RE	MB	\$MI
AHCC BARN BURNER B907	AHCC WESTWIND W544	LVLS 9066U	7	2.8	78	132	17	56	5	0.9	14	-0.21	69	0.90	0.10	59
AHCC HIGH STAKES 376H	AHCC DAKOTA THUNDER 363D	AHCC MISS ROBIN A376	11	1.8	86	133	32	75	7	0.3	14	-0.12	44	0.70	0.38	71
AUTO LUCKY GUY 140D ET	AUTO LUCKY STRIKE 118B	AUTO REBECA 479A	10	2.0	76	119	20	57	5	0.7	11	-0.32	31	0.90	0.11	60
BRCC HIGHLIGHT REEL 0583H ET	V A R POWER PLAY 7018	AUTO EXCEPTIONAL 282S	11	2.0	85	137	25	67	8	0.9	14	0.04	68	0.81	0.59	77
CELL DENALI 6405D	EBFL YPSILANTI 420Y	MAGS ANNIE	10	2.3	78	136	26	65	6	1.1	10	-0.04	65	0.62	0.22	62
CELL ENVISION 7023E	AHCC BARN BURNER B907	PBRS ZSA ZSA 246Z	6	2.8	98	167	13	62	4	2.3	21	-0.36	66	1.56	0.11	67
CELL HIGH ROLLER 0239H ET	MAGS ALI	MAGS UR SALINA	12	0.6	80	123	30	70	7	1.7	12	-0.04	50	0.49	0.23	63
CHR HARD ROCKS 151H	MAGS FAULTLESS 154F	CHR CRICKET 161C	13	-0.1	94	150	28	75	5	1.2	12	0.03	56	0.59	0.81	88
ELCX HIGH TIME 065H ET	ELCX KINGS LANDING 599 D ET	ELCX ELEVATE 684E ET	11	-0.4	49	75	25	49	7	0.8	13	-0.05	15	0.08	0.19	52
ELCX KINGS LANDING 599 D ET	MAGS XYLOID	WLR PRADA	8	1.6	58	88	33	62	4	0.5	12	-0.20	24	0.57	0.03	50
FWLY CAN DO	RLBH AIR FORCE ONE	CLLL CRYSTAL 334W	12	1.7	79	122	20	60	7	1.2	11	-0.10	56	0.92	0.23	63
FWLY LHC CAPITAL ET	MAGS CABLE	CLLL CRYSTAL 334W	14	2.4	74	118	28	66	8	1.2	13	-0.24	36	0.78	0.24	63
LVLS FULL DUTY 2201F	AUTO HEAVY DUTY 174A	LVLS DARLA 2206D	12	1.4	91	163	32	77	6	2.4	11	-0.04	64	0.73	0.69	84
MAGS EVEREST	MAGS ZODIAC	MAGS BOOK WORM	8	2.3	71	114	26	62	2	0.0	12	0.07	40	0.33	0.31	62
TASF HEINEKEN 405H ET	TASF CROWN ROYAL 960C ET	PLEASANT VALLEY ELSA 1439	4	4.1	70	117	23	59	2	1.1	9	-0.13	34	0.69	0.28	63
TNGC EMPIRE 736E	TMCK CASH FLOW 247C	MAGS BETH ET	8	0.9	91	160	23	68	2	1.6	23	0.19	59	0.35	0.54	76
WZRK GAME CHANGER 4015C	HUNT CREDENTIALS 37C ET	WZRK MISS TUFFENUFF 4015B	9	0.6	76	123	37	75	7	2.1	18	-0.17	58	0.74	0.36	68

ANGUS & RED ANGUS SIRES

BULL	SIRE	DAM	CE	BW	WW	YW	MA	CM	SC	DC	CW	RE	MB	\$W	\$B	\$C
MUSGRAVE SKY HIGH 1535	MUSGRAVE BIG SKY	FLAG QUEEN W 00649	14	-0.1	78	128	26	64	7	0.6	14	0.16	38	0.33	0.65	76
S A V AMERICA 8018	S A V PRESIDENT 6847	S A V MADAME PRIDE 0075	6	2.9	100	161	14	64	-4	1.5	16	0.11	70	0.65	0.60	81



CELL ENVISION 7023E



MAGS EVEREST



TASF HEINEKEN 405H ET



TNGC EMPIRE 736E

NOTES



**LINHART
LIMOUSIN**

**UPCOMING
SALES**

APRIL 23 , 2024
Divas Online Female Sale
Hosted on SC Online Sales

OCTOBER 19, 2024
Fall Harvest Female Sale
At the Farm • Leon, Iowa

NOTES

Sale Averages

NUMBER OF LOTS		TOTAL	AVERAGE
_____	Spring Yearlings	_____	_____
_____	Fall Yearlings	_____	_____
_____	TOTAL BULLS	_____	_____



THANK YOU

We appreciate your support and interest in our breeding program. We take the people side of the business seriously and never for granted, that's why producing a quality product and making sure our customers are satisfied has always been a top priority. Simply put, your attendance and participation at our sales has humbled us, and we wish you many successes with your purchases. Thank you for taking time to view the catalog and allowing us the opportunity to earn your business.

LINHART LIMOUSIN



Marketing Management

2005 Ruhl Drive
Guthrie, OK 73044

LINHART LIMOUSIN
**BUSINESS
DONE RIGHT**

Bull Sale

MARCH 2, 2024 • 1 P.M. CST
At The Farm • Leon, Iowa

