



Symens
SYES **Brothers**
Your Guarantee of Predictable Genetics

44th Annual Muscle Up For Profit Sale

FEBRUARY 22, 2024 • 1 PM

At The Farm • Amherst, SD

Selling 85 Bulls & 23 Females

Hello, and welcome to our 44th annual production sale. After 53 years of breeding Limousin cattle, we've seen a lot of changes. We've made changes in the cattle to better suit both the environment and the market commercial cattle producers sell into. We still emphasize soundness, fertility, muscle and efficiency, but we've also made the cattle deeper bodied and easier fleshing.

Many of the tools we use to evaluate registered cattle have changed as well. Data points have been added, and the accuracy of that data has increased as well. We've always believed in offering as many tools as possible so you can choose what suits your program best. Weaning weights and yearling weights are all adjusted so each animal can be compared on a level playing field. Scrotal and ultrasound scan data is also offered sale day with those same adjustments. Expected progeny differences (EPDs) are now genomically-enhanced, meaning DNA has been sampled to make those numbers more accurate. Please use those numbers as you see fit.

While people in this business may change, the way we do business with them hasn't. We may sell these lots through the internet as well as in person, but your visit and live evaluation of them is still appreciated. We believe in presenting the animals honestly, and our word on that is as important as anything we do to raise them. That said, we stand behind the cattle with a one year breeding season guarantee. We'll also do our best to work with you on delivery of the cattle as soon as possible.

We all realize that being stewards of God's creation is one of the most important efforts we're tasked with, and we're all standing on the shoulders of those who have come before us. Just as these cattle represent many generations of labor, decision making and faith, we also represent many generations here at Symens Brothers that taught us to continue to produce functional cattle for tomorrow's cow herd.

THANK YOU.
Symens Bros.

Limousin Friends,

It is our sincere pleasure to be working side by side with the Symens family to present their 44th Annual Muscle Up For Profit Production Sale offering.

You have come to expect excellence from the Symens program and your interest in their genetics is certainly appreciated. Bulls and females carrying the SYES prefix can be found working from South Dakota to both coasts and borders. It is truly impressive when you consider their half century involvement in the breed and the fact their genetics positively influence both purebred and commercial herds across the country.

Take comfort in the fact the Symens operation keeps a keen eye on how their genetics perform from birth all the way to the rail. In an effort to better predict how their genetics will perform, notice that animals in the sale have been genomically-tested. The end result of this meticulous attention to each and every detail are bulls and females proven to work in a variety of herds.

It should come as no surprise that customer service remains a top priority, and that each and every customer is important to the success of their program. Many of you reading this catalog are previous customers—a return customer is the ultimate compliment. These repeat customers are a true testament to both the genetics offered as well as the people who stand behind them.

We hope you will be able to attend the sale in person to take part in the hospitality the Symens program is known for.

Thank you again for your interest in this offering. Please do not hesitate to contact us. We are here to assist you in any way possible.

Regards,



Kiley McKinna
Wiley Fanta



Symens
SYES **Brothers**
Your Guarantee of Predictable Genetics

P.O. Box 155 • Amherst, South Dakota 57421
John: 605/880-8061 • Warren: 605/237-2127
Office: 605/448-2624 • jssymens@venturecomm.net
Check Symens Bros Limousin on for current information.

SUPPLEMENT INFORMATION

Yearling Weights, Scrotal Measurements and Ultrasound data will be available sale day and online at www.dvauction.com

PURCHASER OBLIGATION

All animals are at risk of the purchaser once sale is made. Border fees out of the U.S. is the responsibility of buyer.

VIEWING CATALOG AND VIDEOS

Catalog and videos of bulls can be viewed online at www.mcmarketingmanagement.com or www.dvauction.com. Buyers are encouraged to view the cattle any time prior to sale date in case of inclement weather sale day.

All cattle sell under the standard terms and conditions of the North American Limousin Foundation.

MORTALITY INSURANCE

Insurance available sale day. Inquire at clerks desk.

ABERDEEN HOTELS

Holiday Inn Express	605/725-4000
Hampton Inn	605/262-2600
Ramkota Hotel.....	605/229-4040
Americinn.....	605/225-4565

BRITTON HOTELS

Northern Lights Inn	605/448-2438
Sunset Inn	605/448-2205

COMMERCIAL AIRLINES

Aberdeen, SD • 45 miles away
Fargo, ND • 125 miles away
Sioux Falls, SD • 200 Miles Away



GENOMICALLY-ENHANCED EPDS

Animals in the sale have been genomically tested. These EPDs are re-evaluated more often than before so they will change more often. GE-EPDs provide more precise EPDs based on a combination of pedigree, phenotype and DNA. One major benefit is risk reduction through increased accuracies on many traits—the equivalent to having 8-20 progeny. This saves time when assessing young breeding stock and delivers commercial customers more confidence when buying seedstock. Also, if you look under the EPD block of information, there is a % rank category with numbers showing where each animal ranks within the population. This will help you select bulls high in the traits important to you. EPDs dated 1/30/24



44th Annual Muscle Up For Profit Sale

FEBRUARY 22, 2024 • 1 PM
At The Farm • Amherst, SD

SELLING 108 HEAD

78 Yearling Bulls
7 Two-Year-Old Bulls
10 Bred Heifers
13 Open Heifers
Purebreds
All Polled • Red & Black

SALE DAY PHONES

John Symens	605/880-8061
Warren Symens.....	605/237-2127

SALE MANAGEMENT



Kiley McKinna 402/350-3447
Wiley Fanta 320/287-0751
mcmarketingsales@aol.com
www.mcmarketingmanagement.com

AUCTIONEER

Chisum Peterson	605/730-4214
-----------------------	--------------

WATCH & BID ONLINE

A GUIDE TO THE TRAITS YOU ARE LOOKING FOR:

Bulls Suitable For Heifers

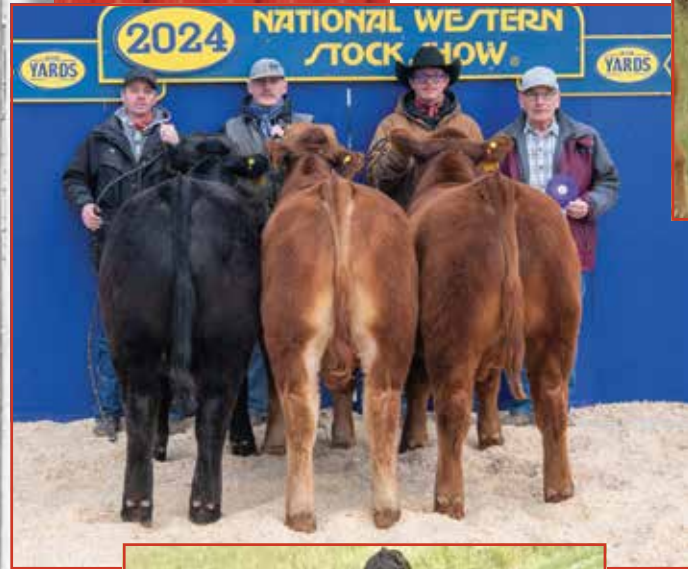
6	25	34	62
8	26	35	64
17	28	39	69
20	29	40	71
21	30	42	72
22	31	45	75
23	32	60	76
24	33	61	78

Bulls With 50% Marbling Or Above

1	25	53	77
2	28	57	78
8	35	58	79
9	36	63	80
11	37	64	81
12	39	68	83
15	43	74	84
16	46	75	85
23	47	76	

Homo Polled & Homo Black Bulls

6	18	49	76
14	22	57	77
16	29	58	85
17	30	60	
	41	72	



Symens Brothers
SYES Your Guarantee of Predictable Genetics



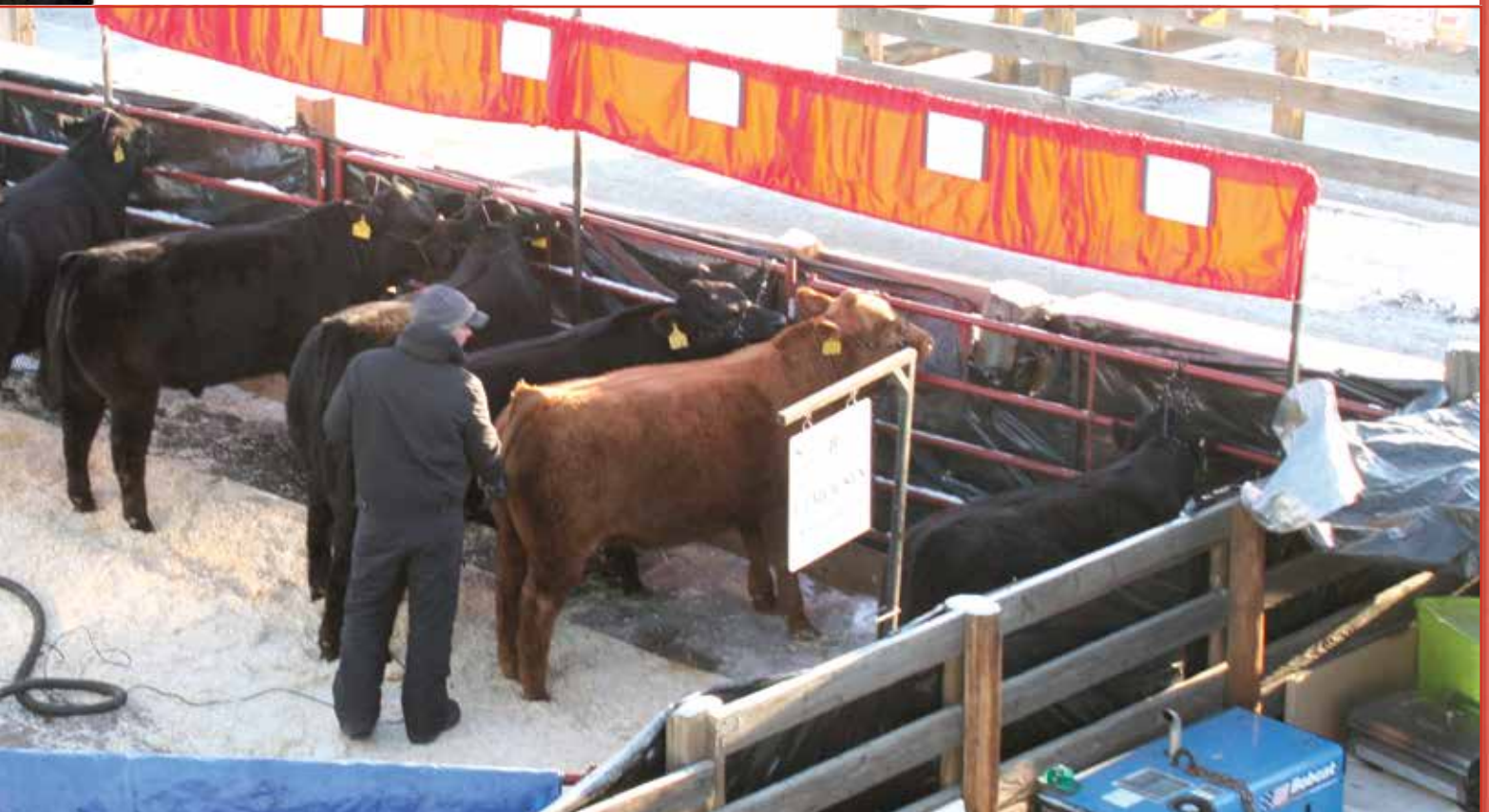
LIMOUSIN BULLS

Lots 1-101

For nearly 50 years we have taken our role as professional seedstock producers very seriously. Our goal has always been to supply genetics capable of helping our customers succeed. As you study this set of bulls, know that every effort has been made to manage, measure, evaluate and represent these bulls in a manner consistent with our philosophy to insure 100% customer satisfaction.

The bulls were weaned in October and put on a grower ration of prairie hay, corn silage, corn and supplement to project a 3.5 lb per day gain. After taking yearling weights they will be backed off to prepare them for breeding in the pasture this summer. They were poured for lice in January and again if needed. We will have a supplement sheet prior to the sale with adjusted ultrasound carcass data, adjusted yearling weights and scrotal measurements. We are confident all bulls should calve virtually unassisted on mature cows.

- Will keep and feed bulls until April 15.
- Free delivery to 400 miles or central points.
- First breeding season guarantee.



YEARLING BULLS



LOT 1



SYES LANDMARK 875L

PUREBRED(93/84) BULL • HET POLLED (T) • HOMO BLACK (T)
04/02/2023 • SYES 875L • NPM2604639

HUNT CREDENTIALS 37C ET
COLE GENESIS 86G
COLE MISS XRATED 354A

LFLC DENVER 857D
MISS SYES DENVER 875F
MISS SYES BIG TIME 874W

HUNT TESTAMENT 40T
JKTW WHISKEY RIVER 985 W
MRL X-RATED 014X
COLE MISS PRODUCTION 874U

WULF'S ZIPLOCK N922Z
LFLC ANNABELLE 857A
FWLY BIG TIME
MISS SYES FORREST 874L

ACT BW
96
ADJ WW
689

	CE	BW	WW	YW	MK	TM	CM	SC	DC	YG	CW	RE	MB	\$MTI
EPDS	11	1.6	75	120	28	66	9	.75	9	-.28	34	.92	.15	61
%Rank	40	60	15	10	20	10	10	30	85	95	20	80	15	10

Member of 2024 National Western Grand Champion Division VI Pen of Limousin Bulls. Leading off our 44th Annual Sale is SYES Landmark 875L. This homozygous black son of COLE Genesis 86G is out of a fantastic LFLC Denver 857D daughter. This is a great bull to start off our 2024 offering. Landmark is stout in his features with a big, square hip and lots of muscle shape that ties down nicely to his quarter. With added depth of rib and flank and a smooth shoulder, this herd-sire prospect will serve his new owners well for years to come. When you factor in his breed-leading numerical profile you really start to get excited! He ranks in the top 10% for yearling weight, calving ease maternal and mainstream terminal index; top 15% for weaning weight and marbling and ranks in the top 20% for milk and carcass weight. There is a lot to like about this bull. With his powerful phenotype, genotype and lineage, he offers you a package capable of adding value!



COLE GENESIS 86G • SIRE OF LOT 1

YEARLING BULLS



LOT 2



LOT 3

2

SYES LEADING EDGE 143L

PUREBRED(90/80.8) BULL • HOMO POLLED (P-2) • RED
04/07/2023 • SYES 143L • NPM2604483

CELL ENVISION 7023E
L7 GENUINE VISION 9033G
MISS L7 567C

JYF EXTRA CHUNK 518E
MISS SYES EX CHUNK 103H
MISS SYES PETE 103E

AHCC BARN BURNER B907
PBRS ZSA ZSA 246Z
L7 ALL THE ANSWERS 3056A
MISS L7 323A

JYF CHUNK 35C
TMF MISS 118W
L7 3014A
MISS SYES WORKTIME 102A

ACT BW
90
ADJ WW
689

%GE-EPDs

	CE	BW	WW	YW	MK	TM	CM	SC	DC	YG	CW	RE	MB	\$MTI
EPDS	4	3.3	73	113	25	61	1	1.15	17	-.62	26	1.38	.05	59
%Rank	>95	90	20	20	45	30	>95	10	10	10	45	5	25	15

We really like the L7 Genuine Vision sons, they have worked well in our herd. They are loaded with muscle, shape and capacity. SYES Leading Edge 143L delivers that in spades. This homozygous polled, red bull is out of a JYF Extra Chunk 518E daughter. He is a performance bull that will sire cattle designed to gain and excel on the rail. Take note of his top 5% rank for ribeye area and his top 10% rank for yield grade, docility and scrotal and his top 20% ranking for weaning weight and yearling weight. Leading Edge is sure to catch your eye sale day!

3

SYES LONG JOHN 188L

PUREBRED(93/82.6) BULL • HOMO POLLED (P-2) • RED
03/31/2023 • SYES 188L • NPM2604502

SYES EASY GOING 77E
SYES JOHN DOE 123J
MISS DOUBLE AGENT 103G

LFLC ARBY 5027A
MISS SYES ARBY 688G
MISS WASY DIME 683D

COLE BUSINESSMAN 104B
MISS SYES RANSOM 76X
SYES DOUBLE AGENT 175D
MISS SYES PETE 103E

LFLC WINDFALL 56W
HOEL RIGAMAROLE
CHTT WORK TIME 4925W
SY ZE EVENING 927Z

ACT BW
98
ADJ WW
719

%GE-EPDs

	CE	BW	WW	YW	MK	TM	CM	SC	DC	YG	CW	RE	MB	\$MTI
EPDS	11	-.6	63	104	26	57	4	.78	14	-.46	21	1.1	-.04	52
%Rank	40	20	60	35	35	50	80	30	45	55	60	45	55	60

Whoa! Stop and check out this muscle man. He's smooth and long bodied with all the right angles. SYES Long John is a homozygous polled bull sired by SYES John Doe 123J and from an LFLC Arby 5027A daughter. This meat wagon will turn heads sale day. He's been a favorite of those who have seen him in person. He is rich in Limousin look and style. He boasts an impressive EPD profile highlighted by a top 20% ranking for birth weight. Plus, he has a time-tested pedigree with all the building blocks to be a great one!

YEARLING BULLS



LOT 4

4

SYES LINCOLN 268L

PUREBRED(100/89.9) BULL • HOMO POLLED (P-3) • HET BLACK (T)
03/01/2023 • SYES 268L • NPM2604535

COLE BUSINESSMAN 104B
SYES EASY GOING 77E
MISS SYES RANSOM 76X

RICHMOND YOGI SRD 7Y
COLE MISS PUREPOWER 809U
WULFS RANSOM 3059R
MISS SYES JUSTICE 476U

JYF EXTRA CHUNK 518E
MISS SYES EX CHUNK 268J
MISS SYES BACKSTAGE 267E

JYF CHUNK 35C
TMF MISS 118W
SYES BACKSTAGE 466B
MISS SYES XCLUSIVE 266C

ACT BW
88
ADJ WW
695

	CE	BW	WW	YW	MK	TM	CM	SC	DC	YG	CW	RE	MB	\$MTI
EPDS	13	.3	66	98	21	54	8	.65	9	-.61	18	1.27	-.23	47
%Rank	25	35	45	50	85	70	25	40	85	10	70	15	>95	85

Here's one that comes to us in a black, homozygous polled package and carries the added width and dimension cattlemen search for. This son of SYES Easy Going 77E is extra heavy muscled, wide-topped and structurally correct. On paper, SYES Lincoln 268L possess a well-balanced EPD profile that allows for is a wide range of use. This purebred has all the bells and whistles—make sure he is on your short list on sale day.



LOT 5

5

SYES LEATHERNECK 218L

PUREBRED(100/91) BULL • HOMO POLLED (P-1) • RED
04/07/2023 • SYES 218L • NPM2604519

JYF CHUNK 35C
JYF EXTRA CHUNK 518E
TMF MISS 118W

WULFS ZEPHYR X624Z
TMF MISS 186W
TMF SUPERDUTY 516S
TOP MEADOW 508S

TOMV DIESEL 619D
MISS SYES DIESEL 217H
MISS SYES SPACE SHIP 317W

GV AUSTIN 701A
MISS TOM 118Y
KRVN NIGHT OWL 223N
MISS SYES R JUST 318P

ACT BW
94
ADJ WW
705

	CE	BW	WW	YW	MK	TM	CM	SC	DC	YG	CW	RE	MB	\$MTI
EPDS	5	3.9	69	105	25	59	4	.8	5	-.63	31	1.39	-.05	54
%Rank	95	95	35	35	45	40	80	25	95	5	25	5	60	40

SYES Leatherneck 218L is a handsome, homozygous polled, red-hided bull sired by JYF Extra Chunk 518E and from a TOMV Diesel 619D daughter. This guy has a top 5% ranking for ribeye area and yield grade. He also offers valuable maternal ability blended with carcass values. Study his phenotype and genotype and you'll realize this bull is the real deal!



LOT 6

6

SYES LINEDRIVE 37L

PERCENTAGE(82/72.4) BULL • HOMO POLLED (P-1) • HOMO BLACK (T)
02/28/2023 • SYES 37L • NXM2604424

AHCC EARNING POWER 900E ET
LEWIS GRAVITY FLOW G62
MISS WULFETTE 2285Z

MAGS ANCHOR
LVLS 9066U
SA V PIONEER 7301
WULFS UNEQUAL MATCH 8280U

LFLC CHECKING ACCOUNT 701C
MISS SYES CH ACCOUNT 37J
MISS SYES EASY GOING 37G

WULF'S ZIPLOCK N922Z
LFLC 701X XTRA GOOD
SYES EASY GOING 77E
MISS SYES YAHOO 337A

ACT BW
82
ADJ WW
689

	CE	BW	WW	YW	MK	TM	CM	SC	DC	YG	CW	RE	MB	\$MTI
EPDS	13	-.8	73	113	30	67	9	1.12	14	-.3	29	.9	-.14	50
%Rank	30	40	15	15	5	5	30	20	15	25	70	30	>95	95

Needing to add growth to your program? SYES Linedrive will do just that. This double homozygous son of Lewis Gravity Flow G62 out of an LFLC Checking Account 701C daughter ranks in the top 15% for weaning, yearling weight and docility. There's the added power your program needs. He balances out all the convenient traits in a rugged design with lots of growth. We think you will appreciate him sale day.

YEARLING BULLS



LOT 7



LOT 8

7

SYES LAST CALL 280L

PUREBRED(93/80) BULL • HOMO POLLED (P-2) • HET BLACK (T)
03/24/2023 • SYES 280L • NPM2604538

CELL ENVISION 7023E
RMKR HERCULES 020H
RMKR YASMINE 128Y

LFLC ARBY 5027A
MISS SYES ARBY 680G
WASY BALLERINA 681B

AHCC BARN BURNER B907
PBR5 ZSA ZSA 246Z
GTBR UNDERTAKER 6U
RMKR UNICORN 854U

LFLC WINDFALL 56W
HOEL RIGAMAROLE
SYES USER FRIENDLY 524U
COLE MISS THUNDER 283Z

ACT BW
84
ADJ WW
675

%GE-EPDs

	CE	BW	WW	YW	MK	TM	CM	SC	DC	YG	CW	RE	MB	\$MTI
EPDS	9	1.4	74	110	24	61	3	1.1	15	-.46	34	1.09	-.17	50
%Rank	60	55	20	20	55	30	90	10	20	55	20	50	90	70

You always need to be prepared for the last call! Well SYES Last Call 280L will help you be prepared for next breeding season. This homozygous polled, black son of RMKR Hercules out of an LFLC Arby 5027A daughter is ready to go to work with his top 10% ranking for scrotal, top 20% ranking for docility and top 20% ranking for weaning weight, yearling weight and carcass weight. His mass and dimension are evident, and he moves freely off a sound set of feet and legs. All the positives align in this rugged bull.

8

SYES LANDSLIDE 422L

PUREBRED(93/83.7) BULL • HOMO POLLED (P-2) • BLACK
03/28/2023 • SYES 422L • NPM2604581

HUNT CREDENTIALS 37C ET
COLE GENESIS 86G
COLE MISS XRATED 354A

WULFS XCLUSIVE 2458X
MISS SYES ELNORA 422E ET
MISS SYES LINEBACKER 317S

HUNT TESTAMENT 40T
JKTW WHISKEY RIVER 985 W
MRL X-RATED 014X
COLE MISS PRODUCTION 874U

WZRK PRIMESTAR 861P
WULFS MISSIVE 2258M
OKLF LINEBACKER 341L
MISS SYES R JUST 318P

ACT BW
82
ADJ WW
664

%GE-EPDs

	CE	BW	WW	YW	MK	TM	CM	SC	DC	YG	CW	RE	MB	\$MTI
EPDS	16	-.9	66	94	28	60	10	.33	16	-.35	29	.92	.27	62
%Rank	10	20	45	60	20	35	4	80	15	85	35	80	4	10

Here's a heifer safe purebred! SYES Landslide is a homozygous polled, black son of COLE Genesis 86G and from an Wulfs Xclusive 2458X daughter. This bull is thick and bred for consistency. He posts a top 10% ranking for calving ease and top 20% for birth weight. Also note, his top 4% rankings for both calving ease maternal and marbling. He has the ability to transit real-world performance with moderate birth and keep eye appeal in a calf crop.

YEARLING BULLS

9

SYES LADIES MAN 30L

PUREBRED(90/80.9) BULL • HOMO POLLED (P-3) • RED
03/31/2023 • SYES 30L • NPM2604422

CELL ENVISION 7023E
L7 GENUINE VISION 9033G
MISS L7 567C

AHCC BARN BURNER B907
PBR5 ZSA ZSA 246Z
L7 ALL THE ANSWERS 3056A
MISS L7 323A

TREF EZ STREET 107E
MISS SYES EZ STREET 160H
MISS SYES CADILLAC 160F

WULFS CAPER 3303C
TREF COCOA BEAN 107C
ROMN CADILLAC JACK 101C
MISS SYES 464Z 162B

ACT BW
92

ADJ WW
754

	CE	BW	WW	YW	MK	TM	CM	SC	DC	YG	CW	RE	MB	\$MTI
EPDS	9	2.2	71	106	29	64	5	1.21	21	-41	27	1.02	.06	57
%Rank	60	70	30	30	15	15	65	10	1	70	40	65	25	25

Take a look at this meat wagon! Wow, lots to like here. SYES Ladies Man 30L is a homozygous polled, red-hided son of L7 Genuine Vision 9033G and from a TREF EZ Street 107E daughter. As you study your lessons, take note his weaning and yearling weight EPDs ranking in the top 30% of the breed. Also, recognize that Ladies Man ranks in top 1% for docility. He's sound from the ground up with power written all over him!

10

SYES LINEBACKER 59L

PUREBRED(100/88.7) BULL • HET POLLED (T) • HOMO BLACK (T)
03/04/2023 • SYES 59L • NPM2604436

COLE BUSINESSMAN 104B
SYES EASY GOING 77E
MISS SYES RANSOM 76X

RICHMOND YOGI SRD 7Y
COLE MISS PUREPOWER 809U
WULFS RANSOM 3059R
MISS SYES JUSTICE 476U

LFLC CHECKING ACCOUNT 701C
MISS SYES CH ACCOUNT 19J
MISS SYES WORKTIME 219A

WULF'S ZIPLOCK N922Z
LFLC 701X XTRA GOOD
CHTT WORK TIME 4925W
MISS SYES NIGHT OWL 220T

ACT BW
88

ADJ WW
677

	CE	BW	WW	YW	MK	TM	CM	SC	DC	YG	CW	RE	MB	\$MTI
EPDS	13	-2	59	87	24	54	6	.5	14	-.6	14	1.3	-.11	49
%Rank	25	10	70	70	55	70	50	60	45	10	85	15	75	75

SYES Linebacker 59L is a homozygous black son of SYES Easy Going 77E out of a LFLC Checking Account 701C daughter. This bull has the balance of moderate calving-ease with added growth and maternal ability. His calving ease and birth weight EPDs are legit, ranking in the top 25% and top 10%, respectively, as well as a top 10% for yield grade and top 15% for ribeye area. Linebacker even gives you the eye appeal to round out the total package. Don't miss him sale day.

11

SYES LAWMAN 195L

PUREBRED(87/77.8) BULL • HOMO POLLED (P-3) • RED
03/28/2023 • SYES 195L • NPM2604506

WULFS GALLAGHER 7056G
WZRK JIMMY DEAN 9040J
WZRK 9040G

WULFS XCELLSIOR X252X
WULFS EDWINNA 7056E
L7 EVERLAST 7007E
WZRK ETTA 7061E

WULFS DEVILS LAKE K118D ET
MISS SYES DEVILS LAKE 695G
WASY COWDOG 694C

WULFS BILLY THE KID K234B
WULFS YOUR CHOICE 1419Y
LFLC ARBY 5027A
SY UPSCALE 933JU

ACT BW
94

ADJ WW
663

	CE	BW	WW	YW	MK	TM	CM	SC	DC	YG	CW	RE	MB	\$MTI
EPDS	8	2.9	80	117	24	64	3	.46	19	-.43	44	1.2	.14	63
%Rank	70	85	10	15	55	15	90	70	2	65	4	25	15	5

Here's a keeper. A true herd bull with eye appeal, explosive growth and unmatched performance. We know it's about selling cattle by the pound and SYES Lawman will help with that. This homozygous polled, red-hided son of WZRK Jimmy Dean 9040J is from a Wulfs Devils Lake K118D daughter. He offers elite growth traits that rank in the top 10% for weaning weight and top 15% yearling weight and marbling. He also posts a 2% ranking for docility, top 4% ranking for carcass weight and top 25% for ribeye area. This big boned, heavily muscled bull deserves a place in your pastures.

12

TJ LLOYD 753L

PUREBRED(93/84.2) BULL • HOMO POLLED (T) • RED
04/13/2023 • SYES 753L • NPM2604632

HUNT CREDENTIALS 37C ET
COLE GENESIS 86G
COLE MISS XRATED 354A

HUNT TESTAMENT 40T
JKTW WHISKEY RIVER 985 W
MRL X-RATED 014X
COLE MISS PRODUCTION 874U

GV AUSTIN 701A
DLVL MISS AUSTIN 8153F
DLVL MISS ZANDER 5125C

GV X-MAN 701X
GV MISS LODESTAR 701T
ROMN ZANDER 145Z
DLVL MISS RIPTIDE 110Y

ACT BW
98

ADJ WW
758

	CE	BW	WW	YW	MK	TM	CM	SC	DC	YG	CW	RE	MB	\$MTI
EPDS	9	2.3	77	120	30	69	7	.31	19	-.21	49	.87	.27	65
%Rank	60	75	10	10	15	4	35	80	2	>95	2	85	4	3

TJ Lloyd 753L offers a dominating phenotype backed by elite growth, milk and carcass numerics. He is a homozygous polled COLE Genesis 86G son from a GV Austin 701A daughter. He ranks in the top 10% for weaning weight and yearling weight. Also note, his top 2% ranking for carcass weight and docility, a mainstream terminal index EPD ranked in the top 3%, top 4% ranking for marbling and top 15% ranking for milk. This direct combination of performance, maternal ability and extraordinary phenotype will make this individual highly sought after.



LOT 11



LOT 12

YEARLING BULLS

13

BEANER LOG BOOK 651L

PUREBRED(100/87.3) BULL • HOMO POLLED (P-1) • RED
03/23/2023 • SYES 651L • NPM2604616

SYES EASY GOING 77E
SYES JOHN DOE 123J
MISS DOUBLE AGENT 103G

COLE BUSINESSMAN 104B
MISS SYES RANSOM 76X
SYES DOUBLE AGENT 175D
MISS SYES PETE 103E

CHTT WORK TIME 4925W
MISS BEANER WORKTIME 650D
MISS BEANER XCLUSIVE 615A

HC MONTANA JUSTICE 694
CHTT3625S
WULFS XCLUSIVE 2458X
MISS SYES JORDAN 512M

ACT BW
92
ADJ WW
659

GE-EPDs

	CE	BW	WW	YW	MK	TM	CM	SC	DC	YG	CW	RE	MB	\$MTI
EPDs	11	.9	60	92	26	56	6	.5	18	-.59	5	1.17	-.15	48
%Rank	40	45	70	65	35	55	50	60	3	15	>95	30	85	80

Beaner Log Book 651L is a homozygous polled, red purebred son of SYES John Doe 123J from a CHTT Work Time 4925W daughter. Log Book offers a well-balanced EPD profile. His EPD profile is highlighted by a top 15% ranking for yield grade. He has a nice shape to him in a free-moving package. Bid with confidence.



LOT 13

14

SYES LIVESTREAM 884L

PERCENTAGE(82/73.8) BULL • HOMO POLLED (P-1) • HOMO BLACK (T)
03/27/2023 • SYES 884L • NXM2604641

AHCC EARNING POWER 900E ET
LEWIS GRAVITY FLOW G62
MISS WULFETTE 2285Z

MAGS ANCHOR
LVLS 9066U
S A V PIONEER 7301
WULFS UNEQUAL MATCH 8280U

SYES EASY GOING 77E
MISS SYES EASYGOING 884J
MISS SYES 261U 883X

COLE BUSINESSMAN 104B
MISS SYES RANSOM 76X
MR SYES JUSTICE 116T
MISS SYES MASTER 882R

ACT BW
90
ADJ WW
713

GE-EPDs

	CE	BW	WW	YW	MK	TM	CM	SC	DC	YG	CW	RE	MB	\$MTI
EPDs	10	.9	73	119	28	64	7	1.2	16	-.42	37	1.1	.15	61
%Rank	70	65	15	10	10	10	60	15	5	15	50	15	75	40

You'll want to "Livestream" this double homozygous Lewis Gravity Flow G62 son on sale day! Along with an eye-appealing phenotype, Livestream totes an impressive EPD profile. He posts a top 10% ranking for yearling weight and milk, and a top 15% ranking for weaning weight, scrotal, ribeye area and yield grade. With his balance of economically valuable traits and desirable phenotype, SYES Livestream 884L will provide years of profitability to the winning bidder.



LOT 14

15

SYES LEATHERMAN 284L

PUREBRED(100/91.3) BULL • HOMO POLLED (P-1) • RED
04/13/2023 • SYES 284L • NPM2604539

JYF CHUNK 35C
JYF EXTRA CHUNK 518E
TMF MISS 118W

WULFS ZEPHYR X624Z
TMF MISS 186W
TMF SUPERDUTY 516S
TOP MEADOW 508S

GV BIG TIMER 328E
MISS SYES GV TIMER 884H
MISS SYES 261U 883X

WULFS BIG TIMER 2004B
GV MS BEEFMAKER PRIDE 575C
MR SYES JUSTICE 116T
MISS SYES MASTER 882R

ACT BW
84
ADJ WW
716

GE-EPDs

	CE	BW	WW	YW	MK	TM	CM	SC	DC	YG	CW	RE	MB	\$MTI
EPDs	7	3	71	107	26	62	5	.75	3	-.6	20	1.25	.14	61
%Rank	80	85	30	30	35	25	65	30	>95	10	65	20	15	10

Check out this muscled up bull. SYES Leatherman is a homozygous polled, red-hided JYF Extra Chunk 518E son from a GV Big Timer 328E daughter. Leatherman is a strong candidate for transmitting elite growth to his calf crop with top 30% rankings for weaning weight, yearling weight and scrotal EPDs. What's more, he ranks in the top 10% for yield grade and mainstream terminal index, top 15% for marbling and top 20% for ribeye area. He is desirable in his design with a strong top, great hip and sound structure.



JYF EXTRA CHUNK 518E • SIRE OF LOT 15

YEARLING BULLS



LOT 16

16

SYES LODESTAR 99L

PUREBRED(95/83.9) BULL • HOMO POLLED (P-2) • HOMO BLACK (T)
03/26/2023 • SYES 99L • NPM2604460

AHCC EARNING POWER 900E ET
JBV YELLOWSTONE 901G
JBV GIRL CRUSH 422B

MAGS ANCHOR
LVLS 9066U
JBV EXPEDITION 205Z
JBV BRITTANY 029X

LFLC CHECKING ACCOUNT 701C
MISS SYES CHECK AC 926G
MISS SYES ARBY 926E

WULF'S ZIPLOCK N922Z
LFLC 701X XTRA GOOD
LFLC ARBY 5027A
MISS SYES ROSCOE 925W

ACT BW
88
ADJ WW
639

	CE	BW	WW	YW	MK	TM	CM	SC	DC	YG	CW	RE	MB	\$MTI
EPDS	6	.7	65	103	29	62	3	1.71	6	-4	27	.89	.1	57
%Rank	90	40	50	40	15	25	90	1	95	75	40	85	20	25

You'll want to sit back and enjoy what this guy is going to do in your herd. SYES Lodestar 99L is a double homozygous son of JBV Yellowstone 901G, which I think you can see a pattern with these sons—lots of growth, look and carcass. His dam is a nice-producing LFLC Checking Account 701C daughter. Study the strong numbers, look at the impeccable phenotype and we think you'll agree it works with Lodestar and works well! Breeding-leading EPDs from top to bottom with impressive maternal traits. This bull is the real deal!



LOT 17

17

SYES LIMITLESS 159L

PUREBRED(100/89.6) BULL • HOMO POLLED (P-3) • HOMO BLACK (T)
03/13/2023 • SYES 159L • NPM2604487

COLE BUSINESSMAN 104B
SYES EASY GOING 77E
MISS SYES RANSOM 76X

RICHMOND YOGI SRD 7Y
COLE MISS PUREPOWER 809U
WULFS RANSOM 3059R
MISS SYES JUSTICE 476U

SYES ENCORE 315E
MISS SYES ENCORE 359J
MISS SYES YAHOO 359B

LFLC CHECKING ACCOUNT 701C
MISS SYES ROSCOE 316X
LFLC YAHOO
MISS SYES MASTER 358R

ACT BW
82
ADJ WW
703

	CE	BW	WW	YW	MK	TM	CM	SC	DC	YG	CW	RE	MB	\$MTI
EPDS	11	-.6	61	94	19	49	8	.57	15	-.69	33	1.47	-.34	42
%Rank	40	20	65	60	95	90	25	60	20	1	20	3	>95	>95

SYES Limitless 159L is loaded with eye appeal and a strong top. Limitless is a double homozygous SYES Easy Going 77E son from a SYES Encore 315E daughter. He has muscle shape with breed leading carcass traits. He ranks in the top 1% for yield grade and top 3% for ribeye area. The opportunity here is "Limitless". Don't miss your shot.



LOT 18

18

SYES LARGESCALE 202L

PUREBRED(100/85.5) BULL • HOMO POLLED (P-2) • HOMO BLACK (T)
04/21/2023 • SYES 202L • NPM2604510

CELL ENVISION 7023E
RMKR HERCULES 020H
RMKR YASMINE 128Y

AHCC BARN BURNER B907
PBRs ZSA ZSA 246Z
GTBR UNDERTAKER 6U
RMKR UNICORN 854U

LFLC EMPIRE 903E
MISS SYES EMPIRE 602G
MISS BASY WORKTIME 601Y

GREENWOOD CANADIAN MADE ET
LFLC BABY GOT BACK 903B
CHTT WORK TIME 4925W
MISS BASY LINEBACKER 603S

ACT BW
110
ADJ WW
793

	CE	BW	WW	YW	MK	TM	CM	SC	DC	YG	CW	RE	MB	\$MTI
EPDS	6	4.6	88	134	28	72	4	.76	14	-.41	51	1.23	-.13	55
%Rank	90	>95	1	2	20	2	80	30	45	70	1	20	80	35

Here's a looker! This bull is deep, deep, deep with that herd sire look. SYES Largescale 202L is a double homozygous RMKR Hercules 020H son from an LFLC Empire 903E daughter. This bull will have you excited about the cattle industry! He'll raise you sons that pound down the scales and daughters for the keeper pen.

YEARLING BULLS

19

SYES LAUNCHER 97L

PERCENTAGE(82/73.2) BULL • HET POLLED (T)/SCURRED • RED
03/23/2023 • SYES 97L • NXM2604459

AHCC EARNING POWER 900E ET
LEWIS GRAVITY FLOW G62
MISS WULFETTE 2285Z

MAGS ANCHOR
LVLS 9066U
S A V PIONEER 7301
WULFS UNEQUAL MATCH 8280U

WULFS APOSTLE T343A
MISS SYES APOSTLE 96J
MISS SYES WALK 296A

WULFS YANKEE K689Y
WULFS ULTRA DIAMOND 8571U
ROMN WALK THE WALK 101W
MISS SYES PLATINUM 297U

ACT BW
84
ADJ WW
677

	CE	BW	WW	YW	MK	TM	CM	SC	DC	YG	CW	RE	MB	\$MTI
EPDS	10	-2	64	94	35	67	8	1.43	21	-.46	37	1.28	0	53
%Rank	70	45	30	35	1	5	45	10	1	10	50	4	90	80

Get ready for takeoff! SYES Launcher 97L is a red-hided son of Lewis Gravity Flow G62 out of a Wulfs Apostle T343A daughter. He has a pleasing look with added muscle and rib. Take note if his impressive EPD profile. He ranks in the top 1% for milk and docility, top 4% for ribeye area and top 10% for scrotal and yield grade.



LEWIS GRAVITY FLOW G62 • SIRE OF LOT 19

20

SYES LONGEST YARD 203L

PUREBRED(100/89) BULL • HOMO POLLED (P-3) • RED
03/08/2023 • SYES 203L • NPM2604511

SYES EASY GOING 77E
SYES JOHN DOE 123J
MISS DOUBLE AGENT 103G

COLE BUSINESSMAN 104B
MISS SYES RANSOM 76X
SYES DOUBLE AGENT 175D
MISS SYES PETE 103E

TREF EZ STREET 107E
MISS SYES EZ STREET 203J
MISS SYES DEVILS LAKE 3G

WULFS CAPER 3303C
TREF COCOA BEAN 107C
WULFS DEVILS LAKE K118D ET
MISS SYES URBAN 3B

ACT BW
86
ADJ WW
672

	CE	BW	WW	YW	MK	TM	CM	SC	DC	YG	CW	RE	MB	\$MTI
EPDS	12	-1.6	58	88	27	56	8	.65	20	-.68	10	1.41	-13	48
%Rank	30	10	75	70	30	55	25	40	1	2	95	4	80	75

Are you ready for kickoff time? SYES Longest Yard 203L is a homozygous polled, red son of SYES John Doe 123J from a TREF EZ Street 107E daughter. This bull has a nice look, ideal calving ease traits with sound carcass data. He ranks in the top 1% for docility, top 2% for yield grade and top 4% for ribeye area.



LOT 20

21

EJSY LENNY 689L

PUREBRED(93/83.8) BULL • HOMO POLLED (T) • BLACK
03/02/2023 • EJSY 689L • NPM2604624

COLE BUSINESSMAN 104B
SYES EASY GOING 77E
MISS SYES RANSOM 76X

RICHMOND YOGI SRD 7Y
COLE MISS PUREPOWER 809U
WULFS RANSOM 3059R
MISS SYES JUSTICE 476U

WULFS APOSTLE T343A
EJSY 689J
MISS WASY EVE 683E

WULFS YANKEE K689Y
WULFS ULTRA DIAMOND 8571U
WASY BAKERS MAN 629B
SY ZE EVENING 927Z

ACT BW
76
ADJ WW
696

	CE	BW	WW	YW	MK	TM	CM	SC	DC	YG	CW	RE	MB	\$MTI
EPDS	14	-1.7	66	91	24	57	8	.88	19	-.45	17	1.17	-.06	51
%Rank	15	10	45	65	55	50	25	25	2	55	75	30	60	60

We are keen on this bull. EJSY Lenny 689L is a homozygous polled, black son of SYES Easy Going out of a Wulfs Apostle T343A daughter. Take notice of his top 2% docility EPD, top 10% birth weight ranking and top 15% rank for calving ease.



LOT 21

YEARLING BULLS

22

SYES LEADTIME 106L

PUREBRED(100/89.8) BULL • HOMO POLLED (P-2) • HOMO BLACK (P-2)
03/01/2023 • SYES 106L • NPM2604463

LFLC CHECKING ACCOUNT 701C
SYES ENCORE 315E
MISS SYES ROSCOE 316X

WULF'S ZIPLOCK N922Z
LFLC 701X XTRA GOOD
PLND ROSCOE 051R
MISS SYES LINEBACKER 317S

LFLC EMPIRE 903E
MISS SYES EMPIRE 104J
MISS SYES ABBEY 304A

GREENWOOD CANADIAN MADE ET
LFLC BABY GOT BACK 903B
ROMN WALK THE WALK 101W
MISS SYES NIGHT OWL 100S

ACT BW
74
ADJ WW
641

	CE	BW	WW	YW	MK	TM	CM	SC	DC	YG	CW	RE	MB	\$MTI
EPDS	14	-.1	63	88	24	55	9	.65	17	-.78	12	1.45	-.18	49
%Rank	15	30	60	70	55	65	10	40	10	1	90	3	90	75

Attention cattlemen! SYES Leadtime 106L is a double homozygous SYES Encore son from an LFLC Empire 903E daughter. He is clean in his lines with a big hip, strong top and clean front end. Take the time to evaluate his impressive EPD profile. You will not be disappointed. Leadtime deserves to be on your short list sale day!

23

SYES LARGE PRINT 694L

PERCENTAGE(81/72.3) BULL • HET POLLED (T)/SCURRED • HET BLACK (T)
03/25/2023 • SYES 694L • NXM2604630

HUNT CREDENTIALS 37C ET
COLE GENESIS 86G
COLE MISS XRATED 354A

HUNT TESTAMENT 40T
JKTW WHISKEY RIVER 985 W
MRL X-RATED 014X
COLE MISS PRODUCTION 874U

WULFS URBAN COWBOY 2149U
MISS WASY DISCO BALL 693D
SY UNORTHODOX 928U

WULFS REALTOR 1503R
WULFS MEADOW GRASS 2149M
PJSR POWER SHIFT 408P
SY 909N

ACT BW
84
ADJ WW
651

	CE	BW	WW	YW	MK	TM	CM	SC	DC	YG	CW	RE	MB	\$MTI
EPDS	14	-.6	60	79	34	64	10	.4	19	-.32	31	.84	.31	62
%Rank	20	40	45	60	1	10	15	85	1	20	65	35	50	40

SYES Large Print 694L will have you doing a double take when you see him sale day. This high-percentage Lim-Flex son of COLE Genesis 86G has the added muscle and rib shape you demand. His dam is a top-producing Wulfs Urban Cowboy 2149U daughter. Note, his top 1% ranking for both milk and docility. With this look and numeric profile—don't miss him.

24

SYES LODESTONE 110L

PUREBRED(95/84.3) BULL • HOMO POLLED (P-2) • BLACK
04/01/2023 • SYES 110L • NPM2604466

AHCC EARNING POWER 900E ET
JBV YELLOWSTONE 901G
JBV GIRL CRUSH 422B

MAGS ANCHOR
LVLS 9066U
JBV EXPEDITION 205Z
JBV BRITTANY 029X

SYES USER FRIENDLY 524U
MISS SYES FRIENDLY 106C
MISS SYES AGLOW 146A

WULFS RANSOM 3059R
MISS SYES JUSTICE 224S
WULFS XCLUSIVE 2458X
MISS SYES NIGHT OWL 100S

ACT BW
80
ADJ WW
605

	CE	BW	WW	YW	MK	TM	CM	SC	DC	YG	CW	RE	MB	\$MTI
EPDS	12	.3	64	104	28	60	5	1.7	10	-.36	31	1.02	-.06	50
%Rank	30	35	55	35	20	35	65	1	85	85	25	65	60	65

SYES Lodestone 110L will grab your attention at first glance! This homozygous polled, black son of JBV Yellowstone 901G is from a SYES User Friendly 524U daughter, which means you get the added maternal ability built in. This bull is impressive in his makeup with depth of rib, a big hip and a clean front end. He also offers a top 1% ranking in the breed for scrotal.

25

SYES LINEMAN 187L

PUREBRED(100/86.5) BULL • HOMO POLLED (T) • HET BLACK (T)
03/13/2023 • SYES 187L • NPM2604501

COLE BUSINESSMAN 104B
SYES EASY GOING 77E
MISS SYES RANSOM 76X

RICHMOND YOGI SRD 7Y
COLE MISS PUREPOWER 809U
WULFS RANSOM 3059R
MISS SYES JUSTICE 476U

CELL ENVISION 7023E
MISS SYES ENVISION 887J
MISS SYES X-RATED 883Z

AHCC BARN BURNER B907
PBRs ZSA ZSA 246Z
MRL X-RATED 014X
MISS SYES MASTER 882R

ACT BW
72
ADJ WW
655

	CE	BW	WW	YW	MK	TM	CM	SC	DC	YG	CW	RE	MB	\$MTI
EPDS	12	.2	76	123	19	57	8	1.02	16	-.53	31	1.25	-.03	56
%Rank	30	35	15	10	95	50	25	10	15	30	25	20	50	30

Here is a rugged SYES Easy Going 77E son from a CELL Envision 7023E daughter. SYES Lineman 187L is a homozygous polled, black purebred bull that will add pounds to your herd. He ranks in the top 10% of the breed for yearling weight and scrotal, and top 15% for weaning weight and docility. Sleep better at night knowing Lineman will add pounds and the dollars to your operation.



LOT 24



LOT 25

YEARLING BULLS

26

SYES LEGACY 402L

PUREBRED(100/89.6) BULL • HOMO POLLED (T) • HET BLACK (T)
03/01/2023 • SYES 402L • NPM2604576

LFLC CHECKING ACCOUNT 701C
SYES ENCORE 315E
MISS SYES ROSCOE 316X

WULF'S ZIPLOCK N922Z
LFLC 701X XTRA GOOD
PLND ROSCOE 051R
MISS SYES LINEBACKER 317S

WULFS APOSTLE T343A
MISS SYES APOSTLE 401J
MISS SYES XCLUSIVE 401F

WULFS YANKEE K689Y
WULFS ULTRA DIAMOND 8571U
WULFS XCLUSIVE 2458X
MISS SYES ROSCOE 400T

ACT BW
80
ADJ WW
673

	CE	BW	WW	YW	MK	TM	CM	SC	DC	YG	CW	RE	MB	\$MTI
EPDS	10	-1	77	111	22	60	6	.6	18	-72	21	1.5	-22	51
%Rank	50	30	10	20	75	35	50	40	3	1	60	2	95	60

We like how these SYES Encore 315E calves have turned out with the added muscle and eye appeal. SYES Legacy is a homozygous polled, black Encore son from a Wulfs Apostle T343A daughter. Factor in his top 1% rank for yield grade, top 2% rank for ribeye area, moderate birth and top growth and you have the complete package.



LOT 26

27

SYES LANCASTER 214L

PUREBRED(100/90) BULL • HOMO POLLED (P-2) • RED
04/10/2023 • SYES 214L • NPM2604516

WULFS BILLY THE KID K234B
WULFS DEVILS LAKE K118D ET
WULFS YOUR CHOICE 1419Y

RUNL STETSON 850S
WULFS UNIQUE 8217U
WULFS UPPERMOST 6196U
WULFS SOLOIST 6284S

TREF BIRMINGHAM 170B
MISS SYES BIRMINGHAM 214F
MISS SYES TRAIL 215B

TREF U JOINT 083U
TREF RUTH 170R
WULFS YUKON TRAIL 8084Y
MISS SYES PLATINUM 217T

ACT BW
98
ADJ WW
751

	CE	BW	WW	YW	MK	TM	CM	SC	DC	YG	CW	RE	MB	\$MTI
EPDS	4	3.5	69	103	28	62	0	.45	22	-.63	30	1.62	-.18	49
%Rank	>95	95	35	40	20	25	>95	70	1	5	30	1	90	70

Here's a son of Wulfs Devil Lake K118D who is rugged in his design with his easy-fleshing ability and the balanced numerical profile to be profitable. SYES Lancaster 214L is a homozygous polled, red bull from a TREF Birmingham 170B daughter. You won't go wrong with this bull.



LOT 27

28

SYES LANDGRANT 138L

PUREBRED(93/83.8) BULL • HOMO POLLED (T) • RED
04/20/2023 • SYES 138L • NPM2604482

HUNT CREDENTIALS 37C ET
COLE GENESIS 86G
COLE MISS XRATED 354A

HUNT TESTAMENT 40T
JKTW WHISKEY RIVER 985 W
MRL X-RATED 014X
COLE MISS PRODUCTION 874U

SYES DEEP AND WIDE 34D
MISS SYES DEEP-WIDE 528G
MISS SYES COWBOY 529C

SYES XEROX 464Z
CRVL MISS FRIENDLY 034X
WULFS URBAN COWBOY 2149U
MISS SYES ROSCOE 529U

ACT BW
78
ADJ WW
618

	CE	BW	WW	YW	MK	TM	CM	SC	DC	YG	CW	RE	MB	\$MTI
EPDS	16	-1.2	60	93	26	56	10	.42	17	-.42	11	.92	.3	63
%Rank	10	15	70	60	35	55	4	70	10	65	90	80	3	10

Heifer safe! Check out this mid-April son of COLE Genesis 86G! He is deep ribbed, with a strong top, square hip and clean front end. SYES Landgrant 138L is a homozygous polled, red-hided bull from a SYES Deep And Wide 34D daughter. He ranks in the top 3% for marbling, top 4% for calving ease maternal, top 10% for calving ease and docility and top 15% for birth weight. Landgrant will lift a weight off your shoulders with his moderate birth weight EPD.

29

SYES LIMELIGHT 382L

PERCENTAGE(82/73.1) BULL • HOMO POLLED (T) • HOMO BLACK (T)
04/06/2023 • SYES 382L • NXM2604573

AHCC EARNING POWER 900E ET
LEWIS GRAVITY FLOW G62
MISS WULFETTE 2285Z

MAGS ANCHOR
LVLS 9066U
S A V PIONEER 7301
WULFS UNEQUAL MATCH 8280U

SYES GRAND SLAM 104G
MISS SYES GR SLAM 381J
MISS SYES CHECKING AC 381E

COLE BUSINESSMAN 104B
MISS SYES ABBEY 304A
LFLC CHECKING ACCOUNT 701C
MISS SYES PETE 381C

ACT BW
84
ADJ WW
661

	CE	BW	WW	YW	MK	TM	CM	SC	DC	YG	CW	RE	MB	\$MTI
EPDS	15	-.5	61	100	31	62	11	1.31	16	-.25	30	.82	.08	54
%Rank	15	40	40	30	3	15	3	10	5	30	70	40	85	80

Here's another Lewis Gravity Flow G62 son from a SYES Grand Slam 104G daughter. SYES Limelight 382L is a double homozygous bull with the necessary parts and pieces to work in a variety of scenarios. He ranks above average for growth and maternal ability. He posts a top 3% rank for milk and calving ease maternal, a top 5% rank for docility and a top 10% ranking for scrotal. Don't sleep on Limelight!

YEARLING BULLS



SYES EASY GOING 77E • SIRE OF LOT 30

30

SYES LIKEMINDED 285L

PUREBRED(93/83.9) BULL • HOMO POLLED (P-3) • HOMO BLACK (T)
03/01/2023 • SYES 285L • NPM2604540

COLE BUSINESSMAN 104B
SYES EASY GOING 77E
MISS SYES RANSOM 76X

SYES ENCORE 315E
MISS SYES ENCORE 685J
WASY BRAVO 684B

RICHMOND YOGI SRD 7Y
COLE MISS PUREPOWER 809U
WULFS RANSOM 3059R
MISS SYES JUSTICE 476U

LFCL CHECKING ACCOUNT 701C
MISS SYES ROSCOE 316X
SYES USER FRIENDLY 524U
SY ZE THRWAY 938Z

ACT BW
80
ADJ WW
649

	CE	BW	WW	YW	MK	TM	CM	SC	DC	YG	CW	RE	MB	\$MTI
EPDS	13	-1.4	69	106	20	55	8	.65	17	-.5	22	1.24	-.27	45
%Rank	25	10	35	30	90	65	25	40	10	40	60	20	>95	90

SYES Likeminded 285L is a double homozygous son of SYES Easy Going 77E and from a SYES Encore 315E daughter. Admire Likeminded for his muscular, long-backed, deep-bodied phenotype. Aside from his eye-catching phenotype, examine his moderate birth weight. He would make a great addition to your herd bull arsenal.



LOT 31

31

SYES LONGRANGE 546L

PUREBRED(100/90.1) BULL • HOMO POLLED (T) • RED
02/27/2023 • SYES 546L • NPM2604596

SYES EASY GOING 77E
SYES JOHN DOE 123J
MISS DOUBLE AGENT 103G

GV BIG TIMER 328E
MISS SYES GV 546J
MISS SYES UNRELATED 544X

COLE BUSINESSMAN 104B
MISS SYES RANSOM 76X
SYES DOUBLE AGENT 175D
MISS SYES PETE 103E

WULFS BIG TIMER 2004B
GV MS BEEFMAKER PRIDE 575C
TOMV UNRELATED 824U
MISS SYES FORREST 544L

ACT BW
82
ADJ WW
656

	CE	BW	WW	YW	MK	TM	CM	SC	DC	YG	CW	RE	MB	\$MTI
EPDS	16	-.5	64	106	27	59	9	.6	16	-.56	30	1.36	-.22	46
%Rank	10	25	55	30	30	40	10	40	15	20	30	10	95	90

Top 10% rank for calving ease here! This SYES John Doe 123J son is impressive across his EPD data ranking in the top 10% for calving ease, ribeye area and calving ease maternal, top 15% for docility and calving ease maternal and top 20% for yield grade. From a GV Big Timer 328E daughter, SYES Longrange 546L is a homozygous polled, red bull who is moderate in his birth weight.



SYES JOHN DOE 123J • SIRE OF LOT 32

32

SYES LONG RUN 235L

PUREBRED(100/89.9) BULL • HOMO POLLED (P-3) • RED
03/13/2023 • SYES 235L • NPM2604525

SYES EASY GOING 77E
SYES JOHN DOE 123J
MISS DOUBLE AGENT 103G

SYES DOUBLE AGENT 175D
MISS SYES D AGENT 235J
MISS SYES EARTHQUAKE 935G

COLE BUSINESSMAN 104B
MISS SYES RANSOM 76X
SYES DOUBLE AGENT 175D
MISS SYES PETE 103E

SYES BACKSTAGE 466B
MISS SYES XCLUSIVE 176B
SYES EARTHQUAKE 438E ET
MISS SYES 464Z 933B

ACT BW
68
ADJ WW
635

	CE	BW	WW	YW	MK	TM	CM	SC	DC	YG	CW	RE	MB	\$MTI
EPDS	20	-4.9	53	80	24	51	10	.54	14	-.54	6	.91	-.27	41
%Rank	1	1	85	85	55	80	4	60	45	25	>95	80	>95	>95

Calving-ease specialist alert! SYES Long Run 235L comes by it honestly as he is a son of SYES John Doe and from a SYES Double Agent 175D daughter. This homozygous polled, red bull ranks in the top 1% of the breed for both calving ease and birthweight. Sleep tight!

YEARLING BULLS

33

SYES LONGTERM 530L

PUREBRED(100/89.5) BULL • HOMO POLLED (P-1) • RED
03/15/2023 • SYES 530L • NPM2604595

SYES EASY GOING 77E
SYES JOHN DOE 123J
MISS DOUBLE AGENT 103G

COLE BUSINESSMAN 104B
MISS SYES RANSOM 76X
SYES DOUBLE AGENT 175D
MISS SYES PETE 103E

GV BIG TIMER 328E
MISS SYES GV 530J
MISS SYES URBAN 930Y

WULFS BIG TIMER 2004B
GV MS BEEFMAKER PRIDE 575C
WULFS URBAN COWBOY 2149U
MISS SYES DUKE 926S

ACT BW
76
ADJ WW
625

	CE	BW	WW	YW	MK	TM	CM	SC	DC	YG	CW	RE	MB	\$MTI
EPDS	16	-1.7	60	101	26	56	10	.42	19	-.61	15	1.23	-.23	45
%Rank	10	10	70	45	35	55	4	70	2	10	80	20	>95	95

Here's another easy-calving bull with carcass merit and docility. SYES Longterm 530L is homozygous polled and red. He's by SYES John Doe 123J and from a GV Big Timer 328E daughter. He ranks in the top 2% for docility, top 4% for calving ease maternal and top 10% for calving ease, birth weight and yield grade. Breed-leading numbers in an attractive package.



LOT 33

34

SYES LANDOWNER32L

PUREBRED(93/84.2) BULL • SCURRED • RED
03/28/2023 • SYES 32L • NPM2604423

HUNT CREDENTIALS 37C ET
COLE GENESIS 86G
COLE MISS XRATED 354A

HUNT TESTAMENT 40T
JKTW WHISKEY RIVER 985 W
MRL X-RATED 014X
COLE MISS PRODUCTION 874U

DLVL CANYON 546C
MISS SYES CANYON 31F
MISS SYES XCLUSIVE 31B

JYF ZEEK 151Z
DLVL MISS WORKHORSE 170Y
WULFS XCLUSIVE 2458X
MISS SYES NIGHT OWL 91S

ACT BW
80
ADJ WW
631

	CE	BW	WW	YW	MK	TM	CM	SC	DC	YG	CW	RE	MB	\$MTI
EPDS	13	.7	70	112	27	62	9	.6	14	-.23	34	.76	.31	65
%Rank	25	40	30	20	30	25	10	40	45	>95	20	95	3	3

Power is built in here! Take notice of this guy's well-balanced numeric profile. SYES Landowner32L is a scurred, red son of COLE Genesis 86G from a DLVL Canyon 546C daughter. Note he is level-hipped and muscular on a sound set of feet and legs.

35

SYES LANCER 64L

PUREBRED(93/83.6) BULL • HOMO POLLED (P-3) • RED
04/09/2023 • SYES 64L • NPM2604440

WULFS GALLAGHER 7056G
WZRK JIMMY DEAN 9040J
WZRK 9040G

WULFS XCELLSIOR X252X
WULFS EDWINNA 7056E
L7 EVERLAST 7007E
WZRK ETTA 7061E

WULFS DEVILS LAKE K118D ET
MISS SYES DEVILS LAKE 64H
MISS SYES YIELDMASTER 64C

WULFS BILLY THE KID K234B
WULFS YOUR CHOICE 1419Y
JYF YIELDMASTER 80Y
MISS SYES XRATED 464A

ACT BW
70
ADJ WW
645

	CE	BW	WW	YW	MK	TM	CM	SC	DC	YG	CW	RE	MB	\$MTI
EPDS	14	-2.4	60	86	26	56	7	.26	20	-.54	29	1.28	.18	59
%Rank	15	4	70	75	35	55	35	90	1	25	35	15	10	15

SYES Lancer 64L is homozygous polled and red. He is sired by WZRK Jimmy Dean 9040J making him a paternal brother to Lots 11, 37, 47,103 and 106. Clearly, we like how WZRK Jimmy Dean makes them. He ranks in the top 1% for docility, top 4% for birthweight; top 10% for marbling and top 15% for calving ease and ribeye area solidifying him as an easy calving sire prospect.

36

SYES LONNY 185L

PUREBRED(90/81) BULL • HOMO POLLED (T) • RED
04/03/2023 • SYES 185L • NPM2604499

CELL ENVISION 7023E
L7 GENUINE VISION 9033G
MISS L7 567C

AHCC BARN BURNER B907
PBRS ZSA ZSA 246Z
L7 ALL THE ANSWERS 3056A
MISS L7 323A

GV BIG TIMER 328E
MISS SYES GV TIMER 85H
MISS SYES CANYON 80E

WULFS BIG TIMER 2004B
GV MS BEEFMAKER PRIDE 575C
DLVL CANYON 546C
MISS SYES WALK 81Y

ACT BW
92
ADJ WW
632

	CE	BW	WW	YW	MK	TM	CM	SC	DC	YG	CW	RE	MB	\$MTI
EPDS	7	2.5	63	97	26	57	4	1.06	20	-.49	46	1.43	-.02	52
%Rank	80	75	60	50	35	50	80	10	1	40	3	4	50	55

Another L7 Genuine Vision 9033G son and paternal brother to Lots 2 and 9, SYES Lonny 185L is purebred, homozygous polled and red-hided. His dam is a productive GV Big Timer 328E daughter. He has the breed's valuable carcass traits, ranking in the top 3% for carcass weight and top 4% for ribeye area.

37

SYES LANCE 216L

PUREBRED(93/83.9) BULL • HET POLLED (T)/SCURRED • RED
04/13/2023 • SYES 216L • NPM2604517

WULFS GALLAGHER 7056G
WZRK JIMMY DEAN 9040J
WZRK 9040G

WULFS XCELLSIOR X252X
WULFS EDWINNA 7056E
L7 EVERLAST 7007E
WZRK ETTA 7061E

WULFS DEVILS LAKE K118D ET
MISS SYES DEVILS LAKE 216H
MISS SYES BUSINESSMAN 216D

WULFS BILLY THE KID K234B
WULFS YOUR CHOICE 1419Y
COLE BUSINESSMAN 104B
MISS SYES NIGHTOWL 318W

ACT BW
90
ADJ WW
636

	CE	BW	WW	YW	MK	TM	CM	SC	DC	YG	CW	RE	MB	\$MTI
EPDS	11	1.3	75	121	24	62	6	.56	20	-.47	30	1.18	.18	63
%Rank	40	55	15	10	55	25	50	60	1	50	30	30	10	5

This smooth made, stout hipped WZRK Jimmy Dean 9040J son is from a Wulfs Devils Lake K118D daughter. SYES Lance is a purebred, red-hided bull that offers top growth with ribeye and marbling.

YEARLING BULLS

38

SYES LARRY 162L

PUREBRED(95/85.7) BULL • HET POLLED (T)/SCURRED • RED
02/27/2023 • SYES 162L • NPM2604489

TREF EZ STREET 107E
SYES HAT TRICK 230H
MISS SYES AGENT 230F

L7 GENUINE VISION 9033G
MISS SYES G VISION 161J
MISS SYES DEEP & WIDE 161F

WULFS CAPER 3303C
TREF COCOA BEAN 107C
SYES DOUBLE AGENT 175D
MISS SYES COWBOY 229D

CELL ENVISION 7023E
MISS L7 567C
SYES DEEP AND WIDE 34D
MISS SYES PLATINUM 167T

ACT BW
88
ADJ WW
630

%GE-EPDs

	CE	BW	WW	YW	MK	TM	CM	SC	DC	YG	CW	RE	MB	\$MTI
EPDS	6	2.3	62	97	27	58	3	.84	24	-.52	21	1.1	-2	46
%Rank	90	75	60	50	30	45	90	25	1	30	60	45	95	90

Look for this purebred son of SYES Hat Trick 230H with an alluring phenotype and balance set of numerics on sale day. Good hip, square made and nice muscle expression.

39

SYES LUCAS 601L

PUREBRED(100/89.1) BULL • HOMO POLLED (P-1) • RED
04/10/2023 • SYES 601L • NPM2604605

GREENWOOD CANADIAN MADE ET
LFLC EMPIRE 903E
LFLC BABY GOT BACK 903B

SYES XEROX 464Z
MS BASY 464Z 602E
MISS BASY WORKTIME 601Y

GREENWOOD PLD XTRA CHARGE
GREENWOOD WISTERIA LANE
WULFS XCELLSIOR X252X
LFLC DAKOTA BELLE 812Z

DLVL XEROX 023X
MISS SYES ROSCOE 464T
CHTT WORK TIME 4925W
MISS BASY LINEBACKER 603S

ACT BW
70
ADJ WW
643

%GE-EPDs

	CE	BW	WW	YW	MK	TM	CM	SC	DC	YG	CW	RE	MB	\$MTI
EPDS	20	-3.2	55	72	29	56	11	.44	3	-.48	4	.85	.04	52
%Rank	1	2	85	90	15	55	2	70	>95	45	>95	90	30	55

Cattlemen like these LFLC Empire 903E sons—rest easy at night with these moderate birth weight numerics. SYES Lucas 601L ranks in the top 1% for calving ease and top 2% for birth weight.

40

SYES LATITUDE 124L

PERCENTAGE(82/72.8) BULL • HOMO POLLED (T) • HET BLACK (T)
02/26/2023 • SYES 124L • NXM2604473

AHCC EARNING POWER 900E ET
LEWIS GRAVITY FLOW G6Z
MISS WULFETTE 2285Z

SYES ENCORE 315E
MISS SYES ENCORE 126J
MISS SYES YAHOO 226A

MAGS ANCHOR
LVLS 9066U
S A V PIONEER 7301
WULFS UNEQUAL MATCH 8280U

LFLC CHECKING ACCOUNT 701C
MISS SYES ROSCOE 316X
LFLC YAHOO
MISS SYES 923U 216Y

ACT BW
74
ADJ WW
650

%GE-EPDs

	CE	BW	WW	YW	MK	TM	CM	SC	DC	YG	CW	RE	MB	\$MTI
EPDS	13	-.9	72	111	26	62	8	1.12	18	-.54	28	1.31	0	56
%Rank	30	35	15	15	20	15	45	20	1	4	75	3	90	65

This black, homozygous polled Lewis Gravity Flow son has all the grow and carcass merit you could want. He ranks in the top 3% for ribeye area, top 4% for yield grade, top 15% for weaning weight and yearling weight. Cash in with this one.

41

SYES LIBERTY 40L

PUREBRED(100/85) BULL • HOMO POLLED (P-2) • HOMO BLACK (T)
04/04/2023 • SYES 40L • NPM2604426

CELL ENVISION 7023E
RMKR HERCULES 020H
RMKR YASMINE 128Y

LFLC CHECKING ACCOUNT 701C
MISS SYES CHECK AC 820G
MISS SYES SPACE SHIP 821W

AHCC BARN BURNER B907
PBRs ZSA ZSA 246Z
GTBR UNDERTAKER 6U
RMKR UNICORN 854U

WULF'S ZIPLOCK N922Z
LFLC 701X XTRA GOOD
WULFS SPACE SHIP 3223S
MISS SYES FIRST DOWN 820G

ACT BW
90
ADJ WW
648

%GE-EPDs

	CE	BW	WW	YW	MK	TM	CM	SC	DC	YG	CW	RE	MB	\$MTI
EPDS	10	2.6	82	122	25	66	7	1	0	-.64	35	1.44	-.18	54
%Rank	50	80	4	10	45	10	35	10	>95	4	15	3	90	45

The cattle business is a balancing act and SYES Liberty 40L delivers with a well-rounded set of digits. He leads the way with ribeye area, weaning weight, yield grade, scrotal and carcass weight. He's also double homozygous and purebred.

42

SYES LITTLE JOHN 135L

PUREBRED(100/89.6) BULL • HOMO POLLED (P-2) • RED
03/04/2023 • SYES 135L • NPM2604481

SYES EASY GOING 77E
SYES JOHN DOE 123J
MISS DOUBLE AGENT 103G

WULFS DEVILS LAKE K118D ET
MISS SYES DEV LAKE 935J
MISS SYES 464Z 933B

COLE BUSINESSMAN 104B
MISS SYES RANSOM 76X
SYES DOUBLE AGENT 175D
MISS SYES PETE 103E

WULFS BILLY THE KID K234B
WULFS YOUR CHOICE 1419Y
SYES XEROX 464Z
MISS SYES SEN LODESTAR 93

ACT BW
82
ADJ WW
647

%GE-EPDs

	CE	BW	WW	YW	MK	TM	CM	SC	DC	YG	CW	RE	MB	\$MTI
EPDS	12	-2.3	53	78	24	51	4	.53	16	-.68	17	1.47	-.24	43
%Rank	30	5	85	85	55	80	80	60	15	2	75	3	>95	>95

You'll appreciate the total depth of rib and volume this homozygous polled SYES John Doe 123J son has to offer. Then, when you evaluate his numerical profile, you'll be in awe. He ranks in the top 5% or better for birth weight, yield grade and ribeye area.

43

SYES LOGAN 92L

PUREBRED(93/84) BULL • HOMO POLLED (T) • BLACK
03/29/2023 • SYES 92L • NPM2604456

HUNT CREDENTIALS 37C ET
COLE GENESIS 86G
COLE MISS XRATED 354A

WULFS URBAN COWBOY 2149U
MISS SYES COWBOY 93A
MISS SYES NIGHTOWL 93U

HUNT TESTAMENT 40T
JKTW WHISKEY RIVER 985 W
MRL X-RATED 014X
COLE MISS PRODUCTION 874U

WULFS REALTOR 1503R
WULFS MEADOW GRASS 2149M
KRYN NIGHT OWL 223N
MISS SYES GALILEO 93H

ACT BW
84
ADJ WW
610

%GE-EPDs

	CE	BW	WW	YW	MK	TM	CM	SC	DC	YG	CW	RE	MB	\$MTI
EPDS	13	1.3	51	76	30	55	9	.45	7	-.4	19	.83	.35	61
%Rank	25	55	90	90	15	65	10	70	90	75	70	90	2	10

Elite marbling in this homozygous polled son of COLE Genesis. SYES Logan ranks in the top 2% for marbling, top 10% for calving ease maternal and top 15% for milk. This long-bodied, smooth-made bull will also give you added sleep assurance during calving with a top 25% calving ease EPD.

YEARLING BULLS

44

SYES LOMBARD 111L

PUREBRED(100/90) BULL • HOMO POLLED (T) • RED
03/11/2023 • SYES 111L • NPM2604467

SYES EASY GOING 77E
SYES JOHN DOE 123J
MISS DOUBLE AGENT 103G

COLE BUSINESSMAN 104B
MISS SYES RANSOM 76X
SYES DOUBLE AGENT 175D
MISS SYES PETE 103E

JYF EXTRA CHUNK 518E
MISS SYES EX CHUNK 11J
MISS SYES BIRMINGHAM 111D

JYF CHUNK 35C
TMF MISS 118W
TREF BIRMINGHAM 170B
MISS SYES RANSOM 110B

ACT BW
82
ADJ WW
632

	CE	BW	WW	YW	MK	TM	CM	SC	DC	YG	CW	RE	MB	\$MTI
EPDS	12	-3	68	100	23	57	8	.64	7	-.62	26	1.32	-.3	45
%Rank	30	25	40	45	65	50	25	40	90	10	45	10	>95	95

A balance of calving-ease, growth and carcass traits all wrapped up in a pleasing package. SYES Lombard is homozygous polled and sired by SYES John Doe 123J. He ranks in the top 10% for ribeye area and yield grade. You can have it all with Lombard.



LOT 44

45

SYES LECTRIC 255L

PUREBRED(100/88.9) BULL • HOMO POLLED (T) • RED
04/17/2023 • SYES 255L • NPM2604527

GREENWOOD CANADIAN MADE ET
LFLC EMPIRE 903E
LFLC BABY GOT BACK 903B

GREENWOOD PLD XTRA CHARGE
GREENWOOD WISTERIA LANE
WULFS XCELLSIOR X252X
LFLC DAKOTA BELLE 812Z

CHTT WORK TIME 4925W
MISS SYES WORKTIME 255C
MISS SYES ROSCOE 255T

HC MONTANA JUSTICE 694
CHTT3625S
PLND ROSCOE 051R
MISS SYES MCCALL 255M

ACT BW
84
ADJ WW
681

	CE	BW	WW	YW	MK	TM	CM	SC	DC	YG	CW	RE	MB	\$MTI
EPDS	15	-1.3	53	79	29	55	9	.42	7	-.5	-4	.7	-.1	46
%Rank	10	15	85	85	15	65	10	70	90	40	>95	>95	75	85

Moderate in his calving-ease, SYES Lectric is a homozygous polled, red son of LFLC Empire. He has a nice calving ease EPD ranking in the 10% and top 15% for birth weight. This is a nice bull that will work like a charm.

46

SYES LEG UP 131L

PUREBRED(100/89.7) BULL • HOMO POLLED (T) • RED
04/18/2023 • SYES 131L • NPM2604480

GREENWOOD CANADIAN MADE ET
LFLC EMPIRE 903E
LFLC BABY GOT BACK 903B

GREENWOOD PLD XTRA CHARGE
GREENWOOD WISTERIA LANE
WULFS XCELLSIOR X252X
LFLC DAKOTA BELLE 812Z

COLE BUSINESSMAN 104B
MISS SYES BUSINESSMAN 631G
WASY YOUR MINE 674Y

RICHMOND YOGI SRD 7Y
COLE MISS PUREPOWER 809U
SYES USER FRIENDLY 524U
SY LASSIE 221L

ACT BW
96
ADJ WW
634

	CE	BW	WW	YW	MK	TM	CM	SC	DC	YG	CW	RE	MB	\$MTI
EPDS	10	1.5	56	79	26	54	6	.75	9	-.5	25	1.2	.1	55
%Rank	50	55	80	85	35	70	50	30	85	40	45	25	20	40

SYES Leg Up is a homozygous polled LFLC Empire son from a COLE Businessman daughter. This rugged-made bull comes with extra carcass value.

47

SYES LOGISTIC 5L

PUREBRED(93/84.3) BULL • HOMO POLLED (T) • RED
04/11/2023 • SYES 5L • NPM2604401

WULFS GALLAGHER 7056G
WZRK JIMMY DEAN 9040J
WZRK 9040G

WULFS XCELLSIOR X252X
WULFS EDWINNA 7056E
L7 EVERLAST 7007E
WZRK ETNA 7061E

JYF EXTRA CHUNK 518E
MISS SYES EX CHUNK 4H
MISS SYES BERMUDA 4E

JYF CHUNK 35C
TMF MISS 118W
SYES BERMUDA 559B
MISS SYES TRAIL 5B

ACT BW
90
ADJ WW
634

	CE	BW	WW	YW	MK	TM	CM	SC	DC	YG	CW	RE	MB	\$MTI
EPDS	9	-2	62	88	25	55	5	.41	15	-.61	31	1.46	.06	56
%Rank	60	25	60	70	45	65	65	70	20	10	25	3	25	30

SYES Logistic is a homozygous polled son of WZRK Jimmy Dean. He's chocked-full of muscle and depth of rib with elite carcass merit numbers. He ranks in the top 3% for ribeye area and top 10% for yield grade. Nice combo bull here.

48

SYES LUCKY STRIKE 229L

PUREBRED(100/89.7) BULL • HOMO POLLED (P-2) • RED
03/06/2023 • SYES 229L • NPM2604524

TREF EZ STREET 107E
SYES HAT TRICK 230H
MISS SYES AGENT 230F

WULFS CAPER 3303C
TREF COCOA BEAN 107C
SYES DOUBLE AGENT 175D
MISS SYES COWBOY 229D

WULFS APOSTLE T343A
MISS SYES APOSTLE 228J
MISS SYES YIELDMASTER 229C

WULFS YANKEE K689Y
WULFS ULTRA DIAMOND 8571U
JYF YIELDMASTER 80Y
MISS SYES XPRESSLANE 329A

ACT BW
82
ADJ WW
670

	CE	BW	WW	YW	MK	TM	CM	SC	DC	YG	CW	RE	MB	\$MTI
EPDS	8	-.6	57	76	32	60	6	.69	21	-.57	13	1.32	-.19	45
%Rank	70	20	80	90	5	35	50	40	1	20	85	10	95	95

We really like these SYES Hat Trick sons. They are long bodied and big hipped, sound from the ground up with an overall strong, powerful look. SYES Lucky Strike is homozygous polled and has impressive carcass merit.

YEARLING BULLS



LOT 49

49

SYES LACKEY 264L

PUREBRED(100/85.7) BULL • HOMO POLLED (T) • HOMO BLACK (T)
04/19/2023 • SYES 264L • NPM2604532

CELL ENVISION 7023E
RMKR HERCULES 020H
RMKR YASMINE 128Y

AHCC BARN BURNER B907
PBRZ ZSA ZSA 246Z
GTBR UNDERTAKER 6U
RMKR UNICORN 854U

LFLC CHECKING ACCOUNT 701C
MISS SYES CHECK AC 265G
MISS SYES BUSINESSMAN 266E

WULF'S ZIPLOCK N922Z
LFLC 701X XTRA GOOD
COLE BUSINESSMAN 104B
MISS SYES NIGHT OWL 263S

ACT BW
90
ADJ WW
619

	CE	BW	WW	YW	MK	TM	CM	SC	DC	YG	CW	RE	MB	\$MTI
EPDS	7	2.3	79	119	22	62	4	.95	1	-.59	35	1.36	-.11	55
%Rank	80	75	10	10	75	25	80	15	>95	15	15	10	75	40

Here's a double homozygous RMKR Hercules son with top-ranking growth and carcass values. SYES Lackey ranks in the top 10% for weaning weight, yearling weight and ribeye area. From top to bottom, this bull is impressive.



LOT 50

50

SYES LEGIBLE 267L

PUREBRED(100/88.1) BULL • HOMO POLLED (P-1) • HET BLACK (T)
04/01/2023 • SYES 267L • NPM2604534

WULFS RIDGLEY 3172R
ROMN WALK THE WALK 101W
ROMN TUTU 40T

COLE WULF HUNT
WULFS NEGOTIABLE 3172N
ROMN MADE TO ORDER
ROMN LONNA 17L

WULFS XCLUSIVE 2458X
MISS SYES XCLUSIVE 266C
MISS SYES NIGHT OWL 263S

WZRK PRIMESTAR 861P
WULFS MISSIVE 2258M
KRYN NIGHT OWL 223N
MISS SYES SHILOH 262F

ACT BW
82
ADJ WW
593

	CE	BW	WW	YW	MK	TM	CM	SC	DC	YG	CW	RE	MB	\$MTI
EPDS	13	.4	59	89	22	51	8	.9	12	-.49	15	.89	-.05	50
%Rank	25	35	70	70	75	80	25	15	70	40	80	85	60	65

You'll really like these ROMN Walk The Walk sons when you see them sale day! SYES Legible is homozygous polled and gives you a moderate birth weight EPD. Make sure to look up Legible on sale day.

51

SYES LUMBERJACK 325L

PUREBRED(100/88.7) BULL • HOMO POLLED (P-1) • RED
04/04/2023 • SYES 325L • NPM2604558

WULFS RIDGLEY 3172R
ROMN WALK THE WALK 101W
ROMN TUTU 40T

COLE WULF HUNT
WULFS NEGOTIABLE 3172N
ROMN MADE TO ORDER
ROMN LONNA 17L

L7 3014A
MISS SYES PETE 325D
MISS SYES LODESTAR 322S

MRL X-RATED 014X
MISS L7 639S
JCL LODESTAR 27L
MISS SYES LADYS MAN 322P

ACT BW
82
ADJ WW
648

	CE	BW	WW	YW	MK	TM	CM	SC	DC	YG	CW	RE	MB	\$MTI
EPDS	9	-.8	54	84	25	52	7	.95	16	-.49	15	.93	-.05	49
%Rank	60	20	85	80	45	75	35	15	15	40	80	80	60	75

SYES Lumber Jack is a homozygous polled, red-hided son of ROMN Walk The Walk with a moderate birth weight EPD. He ranks in the top 15% of the breed for scrotal and docility and top 20% for birth weight.

52

SYES LONGVIEW 407L

PUREBRED(93/83.2) BULL • HOMO POLLED (P-1) • RED
04/03/2023 • SYES 407L • NPM2604577

WULFS AMAZING BULL T341A
BAR JZ AMAZING BULL 157H
BAR JZ TENA 481C

HUNT MR JOCK 44J
WULFS ULTRA DIAMOND 8571U
WULFS ZERO TURN X292Z
BAR JZ COUNTESS 902W

GREENWOOD CANADIAN MADE ET
MISS SYES CAN MADE 408H
MISS SYES XCLUSIVE 408B

GREENWOOD PLD XTRA CHARGE
GREENWOOD WISTERIA LANE
WULFS XCLUSIVE 2458X
MISS SYES PARAGON 308T

ACT BW
98
ADJ WW
614

	CE	BW	WW	YW	MK	TM	CM	SC	DC	YG	CW	RE	MB	\$MTI
EPDS	4	3.8	65	91	28	61	1	.97	10	-.58	11	1.05	-.11	50
%Rank	>95	95	50	65	20	30	>95	15	85	15	90	55	75	65

Here's a homozygous polled Bar JZ Amazing Bull son from a nice Greenwood Canadian Made daughter. He ranks in the top 15% for scrotal and yield grade. He is impressive in his makeup with added depth and fleshing ability.

YEARLING BULLS

53

SYES LIBERATOR 408L

PUREBRED(100/89.7) BULL • HOMO POLLED (T) • RED
04/03/2023 • SYES 408L • NPM2604578

JYF CHUNK 35C
JYF EXTRA CHUNK 518E
TMF MISS 118W

WULFS XCLUSIVE 2458X
MISS SYES XCLUSIVE 408B
MISS SYES PARAGON 308T

	CE	BW	WW	YW	MK	TM	CM	SC	DC	YG	CW	RE	MB	\$MTI
EPDS	4	2.9	64	88	20	52	2	.55	5	-.62	26	1.3	.03	55
%Rank	>95	85	55	70	90	75	95	60	95	10	45	15	30	35

This JYF Extra Chunk son is out of a great producing Wulfs Xclusive daughter. SYES Liberator is homozygous polled and totes extra carcass merit.

54

SYES LEADING MAN 424L

PUREBRED(90/81.1) BULL • HOMO POLLED (P-2) • HET BLACK (T)
04/13/2023 • SYES 424L • NPM2604583

CELL ENVISION 7023E
L7 GENUINE VISION 9033G
MISS L7 567C

LFLC EMPIRE 903E
MISS SYES EMPIRE 425H
MISS SYES ELISHA 425E ET

	CE	BW	WW	YW	MK	TM	CM	SC	DC	YG	CW	RE	MB	\$MTI
EPDS	6	1.8	60	88	25	54	3	1.15	20	-.46	12	1.05	.01	52
%Rank	90	65	70	70	45	70	90	10	1	55	90	55	40	55

Don't miss the opportunity to own SYES Leading Man. He is homozygous polled and ranks in the top 1% for docility with a top 10% rank for scrotal.

55

SYES LAKER 511L

PUREBRED(95/84.2) BULL • HET POLLED (T) • RED
04/12/2023 • SYES 511L • NPM2604591

L7 GENUINE VISION 9033G
SYES JUNCTION 358J
MISS SYES WORKTIME 357C

L7 FALCON 8055F
MISS SYES FALCON 510H
MISS SYES PETE 610F

	CE	BW	WW	YW	MK	TM	CM	SC	DC	YG	CW	RE	MB	\$MTI
EPDS	3	6.9	75	112	26	63	2	.68	15	-.66	26	1.33	-.23	50
%Rank	>95	>95	15	20	35	20	95	40	20	3	45	10	>95	70

Here is another big-time growth bull. SYES Laker is a red SYES Junction son from an L7 Falcon daughter. He ranks in the top 3% for yield grade, top 15% for weaning weight and top 20% for yearling weight.

56

SYES LIKEABLE 883L

PUREBRED(90/81.8) BULL • POLLED • HOMO BLACK (T)
04/08/2023 • SYES 883L • NPM2604640

CELL ENVISION 7023E
L7 GENUINE VISION 9033G
MISS L7 567C

BAR JZ CRITIQUE 335W
MISS SYES CRITIQUE 883B
MISS SYES MASTER 882R

	CE	BW	WW	YW	MK	TM	CM	SC	DC	YG	CW	RE	MB	\$MTI
EPDS	4	4	68	102	26	60	2	.8	16	-.59	31	1.26	-.07	53
%Rank	>95	95	40	40	35	35	95	25	15	15	25	15	65	50

A solid L7 Genuine Vision son who is homozygous black. SYES Likeable is from a hard-working Bar JZ Critique daughter. He boasts a top 25% rank or better for scrotal, docility, yield grade, ribeye area and carcass weight.

57

SYES LANCELOT 583L

PUREBRED(95/84.7) BULL • HOMO POLLED (T) • HOMO BLACK (P-1)
04/10/2023 • SYES 583L • NPM2604601

AHCC EARNING POWER 900E ET
JBV YELLOWSTONE 901G
JBV GIRL CRUSH 422B

DLVL CANYON 546C
MISS SYES CANYON 582F
MISS SYES CRITIQUE 882Y

	CE	BW	WW	YW	MK	TM	CM	SC	DC	YG	CW	RE	MB	\$MTI
EPDS	4	3.4	70	111	27	62	3	1.55	12	-.44	30	1.24	.26	64
%Rank	>95	90	30	20	30	25	90	3	70	60	30	20	4	4

SYES Lancelot is an extremely correct and powerful son of JBV Yellowstone from a DLVL Canyon daughter. He is double homozygous with lots of positives.

58

SYES LANDSCAPE 478L

PUREBRED(93/84.6) BULL • HOMO POLLED (P-2) • HOMO BLACK (T)
04/08/2023 • SYES 478L • NPM2604590

HUNT CREDENTIALS 37C ET
COLE GENESIS 86G
COLE MISS XRATED 354A

RICHMOND XANDER SRD 22X
MISS SYES XANDER 476Z
MISS SYES NIGHT OWL 472S

	CE	BW	WW	YW	MK	TM	CM	SC	DC	YG	CW	RE	MB	\$MTI
EPDS	10	.7	62	86	34	65	8	.35	7	-.27	13	.58	.27	61
%Rank	50	40	60	75	2	15	25	80	90	>95	85	>95	4	10

SYES Landscape ranks in the top 2% for milk and top 4% for marbling. He is long bodied, square hipped and has the depth cattlemen appreciate.

59

BEANER LONG BOW 650L

PUREBRED(100/88.7) BULL • HET POLLED (T)/SCURRED • RED
03/25/2023 • SYES 650L • NPM2604615

SYES EASY GOING 77E
SYES JOHN DOE 123J
MISS DOUBLE AGENT 103G

WULFS XCLUSIVE 2458X
MISS BEANER XCLUSIVE 615A
MISS SYES JORDAN 512M

	CE	BW	WW	YW	MK	TM	CM	SC	DC	YG	CW	RE	MB	\$MTI
EPDS	12	1.5	62	94	21	52	6	.25	16	-.59	23	1.29	-.28	44
%Rank	30	55	60	60	85	75	50	90	15	15	55	15	>95	>95

Look here, another SYES John Doe son! You can understand why we like these bulls just by looking at his picture. Solid, from front to back and from the ground up. Length, depth of rib and muscle shape, Beaner Long Bow is a good-looking red, purebred bull.

60

SYES LOADED 683L

PUREBRED(87/77.8) BULL • HOMO POLLED (P-3) • HOMO BLACK (T)
03/04/2023 • SYES 683L • NPM2604620

COLE BUSINESSMAN 104B
SYES EASY GOING 77E
MISS SYES RANSOM 76X

SYES ENCORE 315E
MISS SYES ENCORE 681J
COLE MISS THUNDER 283Z

	CE	BW	WW	YW	MK	TM	CM	SC	DC	YG	CW	RE	MB	\$MTI
EPDS	16	-2.5	61	86	18	49	11	.8	18	-.52	10	1.08	-.09	49
%Rank	10	4	65	75	95	90	2	25	3	30	95	50	70	70

Superior calving-ease right here! SYES Loaded is double homozygous and sired by SYES Easy Going. With a -2.5 BW EPD that ranks in the top 4% of the breed, you know you can sleep soundly come calving time.

YEARLING BULLS



LOT 61

61

SYES LEARNING CURVE 217L

PUREBRED(100/86.1) BULL • HOMO POLLED (P-3) • HET BLACK (T)
02/26/2023 • SYES 217L • NPM2604518

COLE BUSINESSMAN 104B
SYES EASY GOING 77E
MISS SYES RANSOM 76X

RICHMOND YOGI SRD 7Y
COLE MISS PUREPOWER 809U
WULFS RANSOM 3059R
MISS SYES JUSTICE 476U

CELL ENVISION 7023E
MISS SYES ENVISION 217J
MISS SYES SPACE SHIP 317W

AHCC BARN BURNER B907
PBRS ZSA ZSA 246Z
KRVN NIGHT OWL 223N
MISS SYES R JUST 318P

ACT BW
64
ADJ WW
583

	CE	BW	WW	YW	MK	TM	CM	SC	DC	YG	CW	RE	MB	\$MTI
EPDS	15	-3.1	64	108	17	49	9	1.18	18	-5	31	1.21	-19	47
%Rank	10	2	55	25	>95	90	10	10	3	40	25	25	95	85

A true standout calving ease herd sire prospect. SYES Learning Curve ranks in the top 2% of the breed for birthweight, top 10% for calving ease, scrotal and calving ease maternal. This well-rounded SYES Easy Going son does a lot of things right.

62

SYES LIMESTONE 47L

PUREBRED(90/81.2) BULL • HOMO POLLED (P-3) • RED
03/26/2023 • SYES 47L • NPM2604430

CELL ENVISION 7023E
L7 GENUINE VISION 9033G
MISS L7 567C

AHCC BARN BURNER B907
PBRS ZSA ZSA 246Z
L7 ALL THE ANSWERS 3056A
MISS L7 323A

SYES BERMUDA 559B
MISS SYES BERMUDA 547D
MISS SYES FRIENDLY 546Z

WULFS XCLUSIVE 2458X
MISS SYES URBAN 558X
SYES USER FRIENDLY 524U
MISS SYES UNRELATED 544X

ACT BW
70
ADJ WW
610

	CE	BW	WW	YW	MK	TM	CM	SC	DC	YG	CW	RE	MB	\$MTI
EPDS	13	-3	56	77	25	53	4	1.05	20	-.48	-7	.81	-.06	48
%Rank	25	25	80	85	45	75	80	10	1	45	>95	90	60	75

SYES Limestone is a homozygous polled son of L7 Genuine Vision from an SYES Bermuda daughter. This bull has a good look to him with added rib shape and muscle expression. Look him up sale day.

63

SYES LOCKSTEP 519L

PUREBRED(93/82.4) BULL • HOMO POLLED (P-2) • HET BLACK (T)
03/24/2023 • SYES 519L • NPM2604593

HUNT CREDENTIALS 37C ET
COLE GENESIS 86G
COLE MISS XRATED 354A

HUNT TESTAMENT 40T
JKTW WHISKEY RIVER 985 W
MRL X-RATED 014X
COLE MISS PRODUCTION 874U

LFLC YAHOO
MISS SYES YAHOO 518B
MISS SYES FINAL TIME 519W

RUNL WALKING TALL 252W
LFLC STAR 502S
HC FINAL TIME 40T
MISS SYES LADYS MAN 516R

ACT BW
80
ADJ WW
616

	CE	BW	WW	YW	MK	TM	CM	SC	DC	YG	CW	RE	MB	\$MTI
EPDS	12	1	57	86	26	54	8	.7	9	-.35	36	1.07	.23	58
%Rank	30	50	80	75	35	70	25	30	85	85	15	50	5	15

Check out this COLE Genesis son! SYES Lockstep is homozygous polled and from a LFLC Yahoo daughter. You get the best this mating has to offer in Lockstep. With his added muscle expression, square hip and level top, he will bring a lot of positives to the table for his new owner.

64

SYES LASER 227L

PUREBRED(93/83.6) BULL • HOMO POLLED (P-2) • BLACK
03/20/2023 • SYES 227L • NPM2604522

HUNT CREDENTIALS 37C ET
COLE GENESIS 86G
COLE MISS XRATED 354A

HUNT TESTAMENT 40T
JKTW WHISKEY RIVER 985 W
MRL X-RATED 014X
COLE MISS PRODUCTION 874U

ROMN CADILLAC JACK 101C
MISS SYES DIESEL 229G
MISS SYES XPRESSLANE 329A

WULFS APOSTLE T343A
ROMN RITA 28R
ROMN XPRESS LANE 101X
MISS SYES LODESTAR 329S

ACT BW
72
ADJ WW
620

	CE	BW	WW	YW	MK	TM	CM	SC	DC	YG	CW	RE	MB	\$MTI
EPDS	12	-5	62	96	32	62	8	.75	11	-.31	28	.84	.3	62
%Rank	30	25	60	55	5	25	25	30	75	95	35	90	3	10

This guy will stand out like a laser when you walk in the pen sale day. SYES Laser comes in a rugged, masculine package. He is a homozygous polled COLE Genesis son from a ROMN Cadillac Jack daughter. Balanced in his growth, milk and carcass values, this bull will work great in your program.

65

SYES LONE WOLF 112L

PUREBRED(100/89.7) BULL • HET POLLED (T) • RED
03/05/2023 • SYES 112L • NPM2604468

SYES EASY GOING 77E
SYES JOHN DOE 123J
MISS DOUBLE AGENT 103G

COLE BUSINESSMAN 104B
MISS SYES RANSOM 76X
SYES DOUBLE AGENT 175D
MISS SYES PETE 103E

JYF EXTRA CHUNK 518E
MISS SYES EX CHUNK 112J
MISS SYES RANSOM 111W

JYF CHUNK 35C
TMF MISS 118W
WULFS RANSOM 3059R
MISS SYES JORDAN 115R

ACT BW
82
ADJ WW
612

	CE	BW	WW	YW	MK	TM	CM	SC	DC	YG	CW	RE	MB	\$MTI
EPDS	12	-2	55	84	22	49	8	.53	3	-.62	27	1.52	-.23	43
%Rank	30	25	85	80	75	90	25	60	>95	10	40	2	>95	>95

SYES Lone Wolf is red-hided son of SYES John Doe from a top-producing JYF Extra Chunk daughter. He ranks in the top 2% for ribeye area, top 10% for yield grade and top 25% for birth weight and calving ease maternal. Lone Wolf is sure to be a true asset to your program.

YEARLING BULLS

66

SYES LONGSHOT 337L

PUREBRED(93/83.5) BULL • HOMO POLLED (P-2) • HET BLACK (T)
04/08/2023 • SYES 337L • NPM2604563

HUNT CREDENTIALS 37C ET
COLE GENESIS 86G
COLE MISS XRATED 354A

HUNT TESTAMENT 40T
JKTW WHISKEY RIVER 985 W
MRL X-RATED 014X
COLE MISS PRODUCTION 874U

DLVL CANYON 546C
MISS SYES CANYON 337F
MISS SYES CRITIQUE 317Y

JYF ZEEK 151Z
DLVL MISS WORKHORSE 170Y
BAR JZ CRITIQUE 335W
MISS SYES R JUST 318P

	CE	BW	WW	YW	MK	TM	CM	SC	DC	YG	CW	RE	MB	\$MTI
EPDS	10	.8	65	100	32	65	6	.51	8	-.32	36	1	.43	68
%Rank	50	45	50	45	5	15	50	60	90	90	15	65	1	2

We aren't kidding you when we tell you we like the COLE Genesis sons! They are solid and complete and stand on correct feet and legs. Recognize the top 1% rank for marbling for this homozygous polled bull we call Longshot.

67

SYES LINUS 18L

PUREBRED(100/86.4) BULL • HOMO POLLED (P-2) • BLACK
04/06/2023 • SYES 18L • NPM2604412

CELL ENVISION 7023E
RMKR HERCULES 020H
RMKR YASMINE 128Y

AHCC BARN BURNER B907
PBRS ZSA ZSA 246Z
GTBR UNDERTAKER 6U
RMKR UNICORN 854U

COLE BUSINESSMAN 104B
MISS SYES BUSINESSMAN 17D
MISS SYES ROSCOE 317U

RICHMOND YOGI SRD 7Y
COLE MISS PUREPOWER 809U
PLND ROSCOE 051R
MISS SYES R JUST 318P

	CE	BW	WW	YW	MK	TM	CM	SC	DC	YG	CW	RE	MB	\$MTI
EPDS	6	3	73	114	21	57	5	1.15	11	-.56	33	1.25	-.18	50
%Rank	90	85	20	15	85	50	65	10	75	20	20	20	90	65

This handsome guy has the depth of body and muscle shape you can't wait for him to transmit to his progeny. He ranks in the top 20% or better for weaning weight, yearling weight, scrotal, yield grade, carcass weight and ribeye area.

68

SYES LEAD IN 66L

PUREBRED(90/80.3) BULL • HOMO POLLED (T) • HET BLACK (T)
04/01/2023 • SYES 66L • NPM2604442

CELL ENVISION 7023E
L7 GENUINE VISION 9033G
MISS L7 567C

AHCC BARN BURNER B907
PBRS ZSA ZSA 246Z
L7 ALL THE ANSWERS 3056A
MISS L7 323A

WULFS XCLUSIVE 2458X
MISS SYES XCLUSIVE 266D
MISS SYES NIGHT OWL 263S

WZRK PRIMESTAR 861P
WULFS MISSIVE 2258M
KRVN NIGHT OWL 223N
MISS SYES SHILOH 262F

	CE	BW	WW	YW	MK	TM	CM	SC	DC	YG	CW	RE	MB	\$MTI
EPDS	6	3.1	59	92	19	48	2	1	18	-.38	22	.91	.03	52
%Rank	90	85	70	65	95	90	95	10	3	80	60	80	30	55

This black, homozygous polled son of L7 Genuine Vision is out of a Wulfs Xclusive daughter. Note, his added muscle expression and impeccable structure. He moves freely and is bound to transmit these traits to his progeny.

69

SYES LARS 109L

PERCENTAGE(82/69.4) BULL • HOMO POLLED (P-2) • HET BLACK (T)
04/15/2023 • SYES 109L • NXM2604465

AHCC EARNING POWER 900E ET
LEWIS GRAVITY FLOW G6Z
MISS WULFETTE 2285Z

MAGS ANCHOR
LVLS 9066U
SA V PIONEER 730I
WULFS UNEQUAL MATCH 8280U

CELL ENVISION 7023E
MISS SYES ENVISION 108J
MISS SYES ABIGAIL 638A

AHCC BARN BURNER B907
PBRS ZSA ZSA 246Z
ROMN WALK THE WALK 101W
MISS SYES NIGHT OWL 100S

	CE	BW	WW	YW	MK	TM	CM	SC	DC	YG	CW	RE	MB	\$MTI
EPDS	14	-.6	63	104	28	59	10	1.76	10	-.27	32	.91	.11	56
%Rank	20	40	35	25	10	25	15	2	65	30	65	30	80	70

You can see the added muscle Lars expresses with a balanced EPD set, highlighted by top ranking traits across the board. He ranks in the 2% for scrotal, top 10% for milk, top 15% for calving ease maternal and top 25% for yearling weight.

70

SYES LEGAL TENDER 695L

PERCENTAGE(81/71.8) BULL • HOMO POLLED (P-2) • DOUBLE BLACK
04/21/2023 • SYES 695L • NXM2604628

HUNT CREDENTIALS 37C ET
COLE GENESIS 86G
COLE MISS XRATED 354A

HUNT TESTAMENT 40T
JKTW WHISKEY RIVER 985 W
MRL X-RATED 014X
COLE MISS PRODUCTION 874U

LFLC ARBY 5027A
WASY COWDOG 694C
SY UPSCALE 933U

LFLC WINDFALL 56W
HOEL RIGAMAROLE
SY LASSO 476L
SYHR RUN GINGERLY 910R

	CE	BW	WW	YW	MK	TM	CM	SC	DC	YG	CW	RE	MB	\$MTI
EPDS	9	3.1	73	112	25	62	5	.72	9	-.14	36	.64	.3	64
%Rank	80	95	15	15	25	15	85	50	85	50	55	60	50	30

SYES Legal Tender is another powerful homozygous polled son of COLE Genesis. This bull does a lot right with his elite growth numbers, ranking in the top 15% for weaning weight and yearling weight. This bull does many things right across the board.

71

SYES LEDGER 907L

PUREBRED(93/82.5) BULL • HOMO POLLED (P-3) • BLACK
03/30/2023 • SYES 907L • NPM2604643

WULFS AMAZING BULL T341A
BAR JZ AMAZING BULL 157H
BAR JZ TENA 481C

HUNT MR JOCK 44J
WULFS ULTRA DIAMOND 8571U
WULFS ZERO TURN X292Z
BAR JZ COUNTESS 902W

COLE BUSINESSMAN 104B
MISS SYES BUSINESSMAN 907G
MISS SYES XCLUSIVE 907D

RICHMOND YOGI SRD 7Y
COLE MISS PUREPOWER 809U
WULFS XCLUSIVE 2458X
JBV CHEERLEADER 907W

	CE	BW	WW	YW	MK	TM	CM	SC	DC	YG	CW	RE	MB	\$MTI
EPDS	9	-.5	61	89	24	54	5	1.35	11	-.43	7	.83	-.05	50
%Rank	60	25	65	70	55	70	65	4	75	65	95	90	60	65

Opportunity knocks! SYES Ledger is a homozygous polled Bar JZ Amazing Bull son. He ranks in the top 4% for scrotal with a 1.35 EPD. Make sure to circle this bull in your catalog.

72

SYES LOWELL 122L

PUREBRED(100/89.5) BULL • HOMO POLLED (T) • HOMO BLACK (P-2)
03/01/2023 • SYES 122L • NPM2604471

LFLC CHECKING ACCOUNT 701C
SYES ENCORE 315E
MISS SYES ROSCOE 316X

WULF'S ZIPLOCK N922Z
LFLC 701X XTRA GOOD
PLND ROSCOE 051R
MISS SYES LINEBACKER 317S

WULFS GOOD LUCK 4036G
MISS SYES GOOD LUCK 127J
MISS SYES EASY GOING 126G

HUNT CREDENTIALS 37C ET
WULFS BARBARA ANN 4036B
SYES EASY GOING 77E
MISS SYES YAHOO 226A

	CE	BW	WW	YW	MK	TM	CM	SC	DC	YG	CW	RE	MB	\$MTI
EPDS	12	-.9	60	85	19	49	9	.5	20	-.65	13	1.26	-.25	44
%Rank	30	20	70	75	95	90	10	60	1	3	85	15	>95	95

Another stunning SYES Encore son! SYES Lowell is double homozygous and from a Wulfs Good Luck daughter. He's moderate in his birth. Study his picture, Lowell has a lot of things going for him.

73

SYES LEGMAN 63L

PUREBRED(100/90) BULL • HOMO POLLED (P-1) • RED
04/17/2023 • SYES 63L • NPM2604439

JYF CHUNK 35C
JYF EXTRA CHUNK 518E
TMF MISS 118W

WULFS ZEPHYR X624Z
TMF MISS 186W
TMF SUPERDUTY 516S
TOP MEADOW 508S

ROMN ARGENTINA 119A
MISS SYES ARGENTINA 68C
MISS SYES XCLUSIVE 68A

ROMN XPECT MORE 100X
ROMN XPRESSO 19X
WULFS XCLUSIVE 2458X
MISS SYES URBAN 67X

	CE	BW	WW	YW	MK	TM	CM	SC	DC	YG	CW	RE	MB	\$MTI
EPDS	6	2.7	72	110	19	55	4	.54	9	-.53	35	1.14	-.11	52
%Rank	90	80	25	20	95	65	80	60	85	30	15	40	75	55

Here's a JYF Extra Chunk son who will make a great addition to your program. SYES Legman is homozygous polled and from a ROMN Argentina daughter. Clean lines with extra muscle shape make Legman the one for you.

YEARLING BULLS



JBV YELLOWSTONE 901G • SIRE OF LOT 74



LOT 75

76
SYES LOCKTITE 182L
 PUREBRED(90/80.7) BULL • HOMO POLLED (P-3) • HOMO BLACK (T)
 04/08/2023 • SYES 182L • NPM2604497

CELL ENVISION 7023E
L7 GENUINE VISION 9033G
 MISS L7 567C

WULFS XCLUSIVE 2458X
MISS SYES XCLUSIVE 181H
 MISS SYES FRIENDLY 581A

AHCC BARN BURNER B907
 PBRS ZSA ZSA 246Z
 L7 ALL THE ANSWERS 3056A
 MISS L7 323A

WZRK PRIMESTAR 861P
 WULFS MISSIVE 2258M
 SYES USER FRIENDLY 524U
 MISS SYES WAGONTRAIN 881Y

	CE	BW	WW	YW	MK	TM	CM	SC	DC	YG	CW	RE	MB	\$MTI
EPDS	10	-2	64	101	20	51	4	.93	24	-.36	18	.86	.13	57
%Rank	50	25	55	45	90	80	80	15	1	85	70	85	15	25

ACT BW 76
 ADJ WW 584

This L7 Genuine Vision son is moderate in his birth weight and ranks in the top 25% with a -0.2 EPD. SYES Locktite is double homozygous and from a Wulfs Xclusive daughter which accounts for his calving-ease.



74
BEANER LOCK IN 613L
 PUREBRED(95/83.9) BULL • HOMO POLLED (P-2) • HET BLACK (T)
 04/01/2023 • SYES 613L • NPM2604608

AHCC EARNING POWER 900E ET
JBV YELLOWSTONE 901G
 JBV GIRL CRUSH 422B

LFLC CHECKING ACCOUNT 701C
MISS BEANER CHECKING AC 612F
 MISS BEANER XCLUSIVE 611D

MAGS ANCHOR
 LVLS 9066U
 JBV EXPEDITION 205Z
 JBV BRITTANY 029X

WULF'S ZIPLOCK N922Z
 LFLC 701X XTRA GOOD
 WULFS XCLUSIVE 2458X
 MISS BEANER FRIENDLY 615X

	CE	BW	WW	YW	MK	TM	CM	SC	DC	YG	CW	RE	MB	\$MTI
EPDS	5	1.1	64	97	24	56	3	1.55	7	-.49	34	1.1	.07	56
%Rank	95	50	55	50	55	55	90	3	90	40	20	45	25	30

ACT BW 98
 ADJ WW 592

This JBV Yellowstone son is homozygous polled and good! He's from a LFLC Checking Account daughter that does her job every year. He boasts an impressive set of numerics and an alluring phenotype.

75
SYES LEVI 193L
 PUREBRED(95/84.2) BULL • HET POLLED (T) • BLACK
 03/25/2023 • SYES 193L • NPM2604504

AHCC EARNING POWER 900E ET
JBV YELLOWSTONE 901G
 JBV GIRL CRUSH 422B

L7 3014A
MISS SYES PETE 192F
 MISS SYES URBAN 192X

MAGS ANCHOR
 LVLS 9066U
 JBV EXPEDITION 205Z
 JBV BRITTANY 029X

MRL X-RATED 014X
 MISS L7 639S
 WULFS URBAN COWBOY 2149U
 MISS SYES FIRST DOWN 190G

	CE	BW	WW	YW	MK	TM	CM	SC	DC	YG	CW	RE	MB	\$MTI
EPDS	9	-1	54	93	25	52	6	1.6	15	-.49	13	.97	.09	54
%Rank	60	30	85	60	45	75	50	2	20	40	85	70	20	45

ACT BW 72
 ADJ WW 551

Hop on the bus and let SYES Levi drive your program to success. He is a purebred son of JBV Yellowstone and from a highly productive L7 3014A daughter. Levi posts an impressive 2% ranking in the breed for his scrotal EPD.

77
SYES LARKIN 425L
 PUREBRED(93/84) BULL • HOMO POLLED (P-2) • HOMO BLACK (T)
 03/29/2023 • SYES 425L • NPM2604584

HUNT CREDENTIALS 37C ET
COLE GENESIS 86G
 COLE MISS XRATED 354A

COLE BUSINESSMAN 104B
MISS SYES ELISHA 425E ET
 MISS SYES LINEBACKER 317S

HUNT TESTAMENT 40T
 JKTW WHISKEY RIVER 985 W
 MRL X-RATED 014X
 COLE MISS PRODUCTION 874U

RICHMOND YOGI SRD 7Y
 COLE MISS PUREPOWER 809U
 OKLF LINEBACKER 341L
 MISS SYES R JUST 318P

	CE	BW	WW	YW	MK	TM	CM	SC	DC	YG	CW	RE	MB	\$MTI
EPDS	11	2	68	105	30	64	7	.7	9	-.39	27	.96	.24	62
%Rank	40	65	40	35	15	15	35	30	85	75	40	75	5	10

ACT BW 90
 ADJ WW 556

SYES Larkin draws the attention of many. He is sired by COLE Genesis and from a COLE Businessman daughter. He is stout made with a wide top and rugged design. Don't miss your chance to own this double homozygous purebred.

78
SYES LANDAU 104L
 PUREBRED(93/83.3) BULL • HOMO POLLED (P-2) • HET BLACK (T)
 04/03/2023 • SYES 104L • NPM2604462

HUNT CREDENTIALS 37C ET
COLE GENESIS 86G
 COLE MISS XRATED 354A

ROMN WALK THE WALK 101W
MISS SYES ABBEY 304A
 MISS SYES NIGHT OWL 100S

HUNT TESTAMENT 40T
 JKTW WHISKEY RIVER 985 W
 MRL X-RATED 014X
 COLE MISS PRODUCTION 874U

WULFS RIDGLEY 3172R
 ROMN TUTU 40T
 KRNVN NIGHT OWL 223N
 MISS SYES FIRST DOWN 190G

	CE	BW	WW	YW	MK	TM	CM	SC	DC	YG	CW	RE	MB	\$MTI
EPDS	17	-2.3	58	90	35	64	13	.9	10	-.27	46	1.02	.2	57
%Rank	3	5	75	65	2	15	1	15	85	>95	3	65	10	25

ACT BW 74
 ADJ WW 568

Calving-ease alert! He ranks in the top 3% for calving ease and carcass weight, top 5% for birth weight, top 2% for milk and top 1% for calving ease maternal. Impressive maternal and carcass traits—win, win!

TWO-YEAR-OLD BULLS

TWO-YEAR-OLD BULLS

Lots 79-85

If you are looking for an aged bull capable of covering more cows per breeding season, this group of two-year-old bulls fit the bill. These bulls are stout, athletic and ready to go to work. These herd sires have not been picked over and were held over with the sole purpose of providing our customers bulls with added breeding capacity. Buy with confidence.



79

SYES KYSON 68K

PUREBRED(100/90.1) BULL • HOMO POLLED (P-1) • RED
05/05/2022 • SYES 68K • NPM2508428

WULFS BILLY THE KID K234B
WULFS DEVILS LAKE K118D ET
WULFS YOUR CHOICE 1419Y

WULFS APOSTLE T343A
MISS SYES APOSTLE 463D
MISS SYES PLATINUM 463U

RUNL STETSON 850S
WULFS UNIQUE 8217U
WULFS UPPERMOST 6196U
WULFS SOLOIST 6284S
WULFS YANKEE K689Y
WULFS ULTRA DIAMOND 8571U
RPLF PLATINUM 936P
MISS SYES ELLIOT 464K

ACT BW
86
ADJ WW
737
ADJ YW
1235
SCROTAL
36.8

	CE	BW	WW	YW	MK	TM	CM	SC	DC	YG	CW	RE	MB	\$MTI
EPDS	5	2.4	57	84	30	58	3	.7	16	-7	26	1.78	-.01	53
%Rank	95	75	80	80	15	45	90	30	15	1	45	1	45	50

Adj. UREA: 19.92 • Adj. UIMF: 1.615

Impressive carcass merit here! SYES Kyson ranks in the top 1% for yield grade and ribeye area. SYES Kyson is a homozygous polled, red-hided Wulfs Devils Lake son of a Wulfs Apostle daughter.



LOT 79

80

SYES KITSCH 267K

PUREBRED(100/88.6) BULL • HOMO POLLED (P-1) • BLACK
04/17/2022 • SYES 267K • NPM2508387

WULFS BILLY THE KID K234B
WULFS DEVILS LAKE K118D ET
WULFS YOUR CHOICE 1419Y

WULFS XCLUSIVE 2458X
MISS SYES XCLUSIVE 266C
MISS SYES NIGHT OWL 263S

RUNL STETSON 850S
WULFS UNIQUE 8217U
WULFS UPPERMOST 6196U
WULFS SOLOIST 6284S
WZRK PRIMESTAR 861P
WULFS MISSIVE 2258M
KRVN NIGHT OWL 225N
MISS SYES SHILOH 262F

ACT BW
98
ADJ WW
669
ADJ YW
1221
SCROTAL
30.5

	CE	BW	WW	YW	MK	TM	CM	SC	DC	YG	CW	RE	MB	\$MTI
EPDS	9	3.1	63	102	21	52	2	.5	18	-5	13	.91	.12	58
%Rank	60	85	60	40	85	75	95	60	3	40	85	80	15	20

Adj. UREA: 15.96 • Adj. UIMF: 1.915

Another incredible Wulfs Devils Lake son! SYES Kitsch ranks in the top 15% for marbling. This homozygous polled, black-hided herd sire prospect does a lot of things right. Find him sale day.



WULFS DEVILS LAKE K118D ET • SIRE OF LOT 80

81

SYES KRUGER 202K

PUREBRED(100/90) BULL • HOMO POLLED (P-2) • RED
04/19/2022 • SYES 202K • NPM2508379

JYF CHUNK 35C
JYF EXTRA CHUNK 518E
TMF MISS 118W

LFLC EMPIRE 903E
MISS SYES EMPIRE 602G
MISS BASY WORKTIME 601Y

WULFS ZEPHYR X624Z
TMF MISS 186W
TMF SUPERDUTY 516S
TOP MEADOW 508S
GREENWOOD CANADIAN MADE ET
LFLC BABY GOT BACK 903B
CHTT WORK TIME 4925W
MISS BASY LINEBACKER 603S

ACT BW
92
ADJ WW
743
ADJ YW
1237
SCROTAL
33.5

	CE	BW	WW	YW	MK	TM	CM	SC	DC	YG	CW	RE	MB	\$MTI
EPDS	6	3.3	66	92	27	60	4	.66	-2	-.57	17	1.25	.11	58
%Rank	90	90	45	65	30	35	80	40	>95	20	75	20	15	15

Adj. UREA: 17.4 • Adj. UIMF: 2.055

SYES Kruger is a homozygous polled son of JYF Extra Chunk from a LFLC Empire daughter. This bull has the added muscle to complement his elite carcass and marbling traits.



LOT 81

TWO-YEAR-OLD BULLS

82

SYES KEESTER 324K

PUREBRED(100/86.9) BULL • HOMO POLLED (T) • BLACK
04/26/2022 • SYES 324K • NPM2508442

CELL ENVISION 7023E
RMKR HERCULES 020H
RMKR YASMINE 128Y

DLVL CANYON 546C
MISS SYES CANYON 324F
MISS SYES PLATINUM 121U

AHCC BARN BURNER B907
PBRS ZSA ZSA 246Z
GTBR UNDERTAKER 6U
RMKR UNICORN 854U

JYF ZEEK 151Z
DLVL MISS WORKHORSE 170Y
RPLF PLATINUM 936P
MISS SYES 303N 321R

ACT BW 84
ADJ WW 665
ADJ YW 1166
SCROTAL 32.9

IGE-EPDs

	CE	BW	WW	YW	MK	TM	CM	SC	DC	YG	CW	RE	MB	\$MTI
EPDS	13	-5	68	107	19	53	7	.6	12	-.31	34	.83	-.07	51
%Rank	25	25	40	30	95	75	35	40	70	95	20	90	65	65

Adj. UREA: 15.44 • Adj. UIMF: 1.9

Here is another RMKR Hercules son you need to study hard. SYES Keester is homozygous polled and has a striking look to him. He has the added growth and carcass traits that meshes well with his moderate birth weight. This guy is the total package.

83

SYES KOOPER 210K

PUREBRED(100/90.9) BULL • HOMO POLLED (P-2) • RED
04/23/2022 • SYES 210K • NPM2508383

JYF CHUNK 35C
JYF EXTRA CHUNK 518E
TMF MISS 118W

WULFS DEVILS LAKE K118D ET
MISS SYES DEVILS LAKE 10G
MISS SYES APOSTLE 488D

WULFS ZEPHYR X624Z
TMF MISS 186W
TMF SUPERDUTY 516S
TOP MEADOW 508S

WULFS BILLY THE KID K234B
WULFS YOUR CHOICE 1419Y
WULFS APOSTLE T343A
MISS SYES PLATINUM 388U

ACT BW 84
ADJ WW 683
ADJ YW 1141
SCROTAL 35.7

IGE-EPDs

	CE	BW	WW	YW	MK	TM	CM	SC	DC	YG	CW	RE	MB	\$MTI
EPDS	7	1.9	52	80	26	52	5	.84	5	-.69	31	1.73	0	52
%Rank	80	65	90	85	35	75	65	25	95	1	25	1	40	60

Adj. UREA: 17.68 • Adj. UIMF: 1.745

Excellent carcass traits here! SYES Kooper is a homozygous polled JYF Extra Chunk son from a Wulfs Devils Lake daughter. He ranks in the top 1% for yield grade and ribeye area. Power up here!

84

SYES KINGSTON 369K

PUREBRED(100/85.8) BULL • HOMO POLLED (P-1) • HET BLACK (T)
04/22/2022 • SYES 369K • NPM2508473

CELL ENVISION 7023E
RMKR HERCULES 020H
RMKR YASMINE 128Y

RUNL STETSON 850S
MISS SYES STETSON 368Y
MISS SYES 467T 367W

AHCC BARN BURNER B907
PBRS ZSA ZSA 246Z
GTBR UNDERTAKER 6U
RMKR UNICORN 854U

JCL LODESTAR 27L
RUNL 72L
MR SYES RANSOM 467T
MISS SYES SCHOTT GUN 365R

ACT BW 84
ADJ WW 660
ADJ YW 1140
SCROTAL 36.5

IGE-EPDs

	CE	BW	WW	YW	MK	TM	CM	SC	DC	YG	CW	RE	MB	\$MTI
EPDS	9	1	64	95	19	51	4	.7	16	-.64	19	1.4	-.03	54
%Rank	60	50	55	55	95	80	80	30	15	4	70	5	50	45

Adj. UREA: 15.46 • Adj. UIMF: 1.89

SYES Kingston is a powerful RMKR Hercules son. He is a homozygous polled bull that boasts impressive carcass merit EPDs. He ranks in the top 4% for yield grade and top 5% for ribeye area.

85

SYES KILOTON 126K

PUREBRED(95/83.5) BULL • HOMO POLLED (T) • HOMO BLACK (P-2)
04/21/2022 • SYES 126K • NPM2508371

AHCC EARNING POWER 900E ET
JBV YELLOWSTONE 901G
JBV GIRL CRUSH 422B

LFLC YAHOO
MISS SYES YAHOO 226A
MISS SYES 923U 216Y

MAGS ANCHOR
LVLS 9066U
JBV EXPEDITION 205Z
JBV BRITTANY 029X

RUNL WALKING TALL 252W
LFLC STAR 502S
MR SYES TRACKER 923U
MISS SYES NIGHTOWL 318W

ACT BW 98
ADJ WW 668
ADJ YW 1158
SCROTAL 34.1

IGE-EPDs

	CE	BW	WW	YW	MK	TM	CM	SC	DC	YG	CW	RE	MB	\$MTI
EPDS	2	3	58	90	22	51	2	1.7	8	-.34	15	.55	.16	56
%Rank	>95	85	75	65	75	80	95	1	90	90	80	>95	10	30

Adj. UREA: 13.84 • Adj. UIMF: 2.365

SYES Kiloton is a double homozygous son of JBV Yellowstone from a LFLC Yahoo daughter. JBV Yellowstone consistently produces stand out progeny and Kiloton is no exception. This bull is full of red meat and functionality.

SO YOU CAN'T MAKE IT TO THE SALE IN PERSON? DON'T WORRY

We have you covered!

Watch and Bid Online at

You must register to bid online prior to the sale.

DVAuction
Broadcasting Real-Time Auctions

BRED HEIFERS

Lots 86-95

The bred heifers presented here represent our five decade long commitment to the Limousin breed and the producers who have come to rely on the muscle, growth and efficiency inherent to the Limousin breed. They sell bred to bulls proven for calving-ease as well as growth traits. The projected due dates are based on ultrasound pregnancy testing done in September. Those bred earliest will be due shortly after the sale and we will help arrange delivery as soon as possible. They have had two rounds of Guardian vaccinations for scour prevention. We encourage you to be prepared to take the females home early so they may acclimate to your environmental conditions prior to calving. If you take them home sale day we will credit you \$50 per head.



OPEN HEIFERS

Lots 96-108

This top-notch set of yearling heifers was selected based on their conformation, pedigree history and EPDs in order to predict superior future production. Just as with their yearling bull contemporaries, since birth, these heifers have sorted themselves toward the top of their respective calf crop. In many instances, their genetic makeup is similar to the females we have chosen to retain in the herd to produce the next generation of SYES bulls and replacement females. We encourage you to take these females home early so they may adapt to your management style prior to showing or breeding. If you take them home sale day we will credit you \$50 per head.



BRED HEIFERS

86

MISS SYES EASY GOING 144K

PUREBRED(100/89.8) COW • HOMO POLLED (P-3) • RED
03/11/2022 • SYES 144K • NPF2508250

COLE BUSINESSMAN 104B
SYES EASY GOING 77E
MISS SYES RANSOM 76X

RICHMOND YOGI SRD 7Y
COLE MISS PUREPOWER 809U
WULFS RANSOM 3059R
MISS SYES JUSTICE 476U

ACT BW
80

ADJ WW
641

ADJ YW
966

JYF EXTRA CHUNK 518E
MISS SYES EX CHUNK 104H
MISS SYES ABBEY 304A

JYF CHUNK 35C
TMF MISS 118W
ROMN WALK THE WALK 101W
MISS SYES NIGHT OWL 100S

IGE-EPDs

	CE	BW	WW	YW	MK	TM	CM	SC	DC	YG	CW	RE	MB	\$MTI
EPDs	11	.1	60	87	25	55	9	.9	13	-.64	39	1.59	-.17	47
%Rank	40	30	70	70	45	65	10	15	60	4	10	1	90	85

Al'd 6/1/23 to TREF EZ Street 107E. PE'd 6/2/23 - 7/29/23 to WZRK Jimmy Dean 9040J. Safe to WZRK Jimmy Dean 9040J. Due approximately 5/3/24.

Miss SYES Easy Going 144K starts off our bred heifers with an impressive numeric profile and alluring phenotype. She is bold in her rib shape, dense made and grabs your attention. Generation after generation of maternal ability is stacked in this pedigree. Check out her top 1% ranking for ribeye area, top 4% rank for yield grade and top 10% rank for carcass weight and calving ease maternal.

87

MISS SYES HERCULES 108K

PUREBRED(100/85.9) COW • HOMO POLLED (P-1) • HOMO BLACK (T)
04/05/2022 • SYES 108K • NPF2508300

CELL ENVISION 7023E
RMKR HERCULES 020H
RMKR YASMINE 128Y

AHCC BARN BURNER B907
PBRS ZSA ZSA 246Z
GTBR UNDERTAKER 6U
RMKR UNICORN 854U

ACT BW
92

ADJ WW
683

ADJ YW
979

ROMN WALK THE WALK 101W
MISS SYES ABIGAIL 638A
MISS SYES NIGHT OWL 100S

WULFS RIDGLEY 3172R
ROMN TUTU 40T
KRVN NIGHT OWL 223N
MISS SYES FIRST DOWN 190G

IGE-EPDs

	CE	BW	WW	YW	MK	TM	CM	SC	DC	YG	CW	RE	MB	\$MTI
EPDs	8	2.3	76	115	25	64	7	1.18	13	-.51	26	1.28	-.22	49
%Rank	70	75	15	15	45	15	35	10	60	35	45	15	95	70

Al'd 6/10/23 to RUNL Justified 364J. PE'd 6/11/23 - 7/29/23 to WZRK Jimmy Dean 9040J. Safe to WZRK Jimmy Dean 9040J. Due approximately 4/2/24.

Here's a powerful female that stands on stout feet and legs. Miss SYES Hercules 108K has nice muscle expression that ties down into her rear quarter with extra power. She is straight in her lines with a clean front one-third and a strong top. This female represents years of disciplined breeding decisions and strict culling practices. Note, her top 15% weaning weight and yearling weight EPDs. Imagine the possibilities.

88

MISS SYES EASY GOING 603K

PUREBRED(100/88.9) COW • HOMO POLLED (P-3) • BLACK
03/05/2022 • SYES 603K • NPF2508274

COLE BUSINESSMAN 104B
SYES EASY GOING 77E
MISS SYES RANSOM 76X

RICHMOND YOGI SRD 7Y
COLE MISS PUREPOWER 809U
WULFS RANSOM 3059R
MISS SYES JUSTICE 476U

ACT BW
72

ADJ WW
647

ADJ YW
949

WULFS DEVILS LAKE K118D ET
MISS SYES DEVILS LAKE 601H
MS BASY 464Z 602E

WULFS BILLY THE KID K234B
WULFS YOUR CHOICE 1419Y
SYES XEROX 464Z
MISS BASY WORKTIME 601Y

IGE-EPDs

	CE	BW	WW	YW	MK	TM	CM	SC	DC	YG	CW	RE	MB	\$MTI
EPDs	12	-.5	65	101	26	58	7	.57	16	-.62	21	1.33	-.16	49
%Rank	30	25	50	45	35	45	35	60	15	10	60	10	90	75

Al'd 5/31/23 to TREF EZ Street 107E. PE'd 6/2/23 - 7/29/23 to COLE Earning Power 86K. Safe to COLE Earning Power 86K. Due approximately 5/8/24.

Check out this daughter of SYES Easy Going 77E. This broody looking female has a ton of eye appeal, is dense made with the added muscle, rib shape and a stout hip. Miss SYES Easy Going is from a Wulfs Devils Lake daughter. She ranks in the top 10% for both yield grade and ribeye area and top 25% for birth weight. She has the structural integrity and easy-fleshing ability to be a cornerstone female.

89

MISS SYES EASY GOING 323K

PUREBRED(100/89.8) COW • HET POLLED (T) • RED
03/02/2022 • SYES 323K • NPF2508264

COLE BUSINESSMAN 104B
SYES EASY GOING 77E
MISS SYES RANSOM 76X

RICHMOND YOGI SRD 7Y
COLE MISS PUREPOWER 809U
WULFS RANSOM 3059R
MISS SYES JUSTICE 476U

ACT BW
68

ADJ WW
603

ADJ YW
904

WULFS DEVILS LAKE K118D ET
MISS SYES DEVILS LAKE 328H
MISS SYES ZEEK 324C

WULFS BILLY THE KID K234B
WULFS YOUR CHOICE 1419Y
JYF ZEEK 151Z
MISS SYES PLATINUM 121U

IGE-EPDs

	CE	BW	WW	YW	MK	TM	CM	SC	DC	YG	CW	RE	MB	\$MTI
EPDs	17	-2.5	51	79	24	50	10	.53	14	-.53	24	1.19	-.09	47
%Rank	3	4	90	85	55	85	4	60	45	30	50	25	70	85

Al'd 6/10/23 to TREF EZ Street 107E. PE'd 6/11/23 - 7/29/23 to COLE Earning Power 86K. Safe to TREF EZ Street. Due 3/20/24.

Miss SYES Easy Going 323K is ultra-feminine in her makeup and presents it in a sound-built package. Long spined, a clean front end and capacious rib shape—this polled, red-hided SYES Easy Going 77E daughter is special. She ranks in the top 3% for calving ease, top 4% for birth weight and calving ease maternal. She'll make a nice addition to your herd.



LOT 88



LOT 89

BRED HEIFERS

90

MISS ONSY GALLAGHER 692K

PUREBRED(87/75.1) COW • HOMO POLLED (T) • RED
03/16/2022 • ONSY 692K • NPF2508278

WULFS XCELLSIOR X252X
WULFS GALLAGHER 7056G
WULFS EDWINNA 7056E

WULFS DEVILS LAKE K118D ET
ONSY HENNESSY 693H
MISS ONSY ELLIE 692E

WULFS SIRLOIN 3172S
WULFS MISSIVE 2258M
BIEBER DEEP END B597
WULFS CALIBRI 5210C ET
WULFS BILLY THE KID K234B
WULFS YOUR CHOICE 1419Y
COLE BUSINESSMAN 104B
MISS WASY AMY 692A

ACT BW
74
ADJ WW
566
ADJ YW
915

	CE	BW	WW	YW	MK	TM	CM	SC	DC	YG	CW	RE	MB	\$MTI
EPDS	10	-1.9	54	83	24	52	5	.75	16	-.34	40	1.21	.37	63
%Rank	50	10	85	80	55	75	65	30	15	90	10	25	2	5

Al'd 6/10/23 to TREF EZ Street 107E. PE'd 6/11/23 - 7/29/23 to COLE Earning Power 86K. Safe to COLE Earning Power 86K. Due approximately 4/13/24.

She ranks in the top 2% for marbling, 10% for birth and carcass weight and 25% for REA.



LOT 90

91

MISS SYES EMPIRE 408K

PUREBRED(100/88.7) COW • HOMO POLLED (P-1) • RED
04/27/2022 • SYES 408K • NPF2508271

GREENWOOD CANADIAN MADE ET
LFLC EMPIRE 903E
LFLC BABY GOT BACK 903B

WULFS XCLUSIVE 2458X
MISS SYES XCLUSIVE 408B
MISS SYES PARAGON 308T

GREENWOOD PLD XTRA CHARGE
GREENWOOD WISTERIA LANE
WULFS XCELLSIOR X252X
LFLC DAKOTA BELLE 812Z

WZRK PRIMESTAR 861P
WULFS MISSIVE 2258M
SY PARAGON 340P
MISS SYES SURESHOT 309N

ACT BW
90
ADJ WW
640
ADJ YW
988

	CE	BW	WW	YW	MK	TM	CM	SC	DC	YG	CW	RE	MB	\$MTI
EPDS	12	2.3	69	103	21	56	6	.35	8	-.47	18	.67	.06	57
%Rank	30	75	35	40	85	55	50	80	90	50	70	>95	25	25

Al'd 6/9/23 to TREF EZ Street 107ET. PE'd 6/11/23 - 7/29/23 to COLE Earning Power 86K. Safe to TREF EZ Street 107E. Due 3/19/24.

Miss SYES Empire 408K offers a flawless build complemented by a balanced look.

92

MISS SYES EASY GOING 979K

PUREBRED(100/89) COW • HOMO POLLED (P-3) • BLACK
02/27/2022 • SYES 979K • NPF2508284

COLE BUSINESSMAN 104B
SYES EASY GOING 77E
MISS SYES RANSOM 76X

JYF EXTRA CHUNK 518E
MISS SYES EX CHUNK 979H
MISS SYES WORKTIME 559A

RICHMOND YOGI SRD 7Y
COLE MISS PUREPOWER 809U
WULFS RANSOM 3059R
MISS SYES JUSTICE 476U

JYF CHUNK 35C
TMF MISS 118W
CHTT WORK TIME 4925W
MISS SYES URBAN 558X

ACT BW
76
ADJ WW
647
ADJ YW
935

	CE	BW	WW	YW	MK	TM	CM	SC	DC	YG	CW	RE	MB	\$MTI
EPDS	13	-.5	70	102	23	58	9	.75	17	-.56	21	1.16	-.23	47
%Rank	25	25	30	40	65	45	10	30	10	20	60	35	>95	80

Al'd 6/9/23 to TREF EZ Street 107E. PE'd 6/11/23 - 7/29/23 to WZRK Jimmy Dean 9040J. Safe to WZRK Jimmy Dean 9040J. Due approximately 4/2/24.

This female will be the poundmaker in your herd with her breed-leading growth EPDs.



LOT 93

93

MISS SYES GEN VISION 909K

PUREBRED(90/79.9) COW • HOMO POLLED (P-2) • HET BLACK (T)
04/28/2022 • SYES 909K • NPF2508283

CELL ENVISION 7023E
L7 GENUINE VISION 9033G
MISS L7 567C

WULFS XCLUSIVE 2458X
MISS SYES XCLUSIVE 908F
MISS SYES 923U 907B

AHCC BARN BURNER B907
PBRS ZSA ZSA 246Z
L7 ALL THE ANSWERS 3056A
MISS L7 323A

WZRK PRIMESTAR 861P
WULFS MISSIVE 2258M
MR SYES TRACKER 923U
JBV CHEERLEADER 907W

ACT BW
82
ADJ WW
606
ADJ YW
942

	CE	BW	WW	YW	MK	TM	CM	SC	DC	YG	CW	RE	MB	\$MTI
EPDS	10	2.1	67	108	20	54	4	.93	24	-.45	32	1.16	.07	57
%Rank	50	70	45	25	90	70	80	15	1	55	25	35	25	25

Al'd 6/9/23 to WZRK Jimmy Dean 9040K. PE'd 6/11/23 - 7/29/23 to WZRK Jimmy Dean 9040J. Safe to WZRK Jimmy Dean 9040J. Due 3/19/24.

Massive in her design with that true brood cow prospect in the making look.

94

MISS SYES EX CHUNK 47K

PUREBRED(100/90.9) COW • HOMO POLLED (P-3) • RED
04/12/2022 • SYES 47K • NPF2508292

JYF CHUNK 35C
JYF EXTRA CHUNK 518E
TMF MISS 118W

SYES BERMUDA 559B
MISS SYES BERMUDA 547D
MISS SYES FRIENDLY 546Z

WULFS ZEPHYR X624Z
TMF MISS 186W
TMF SUPERDUTY 516S
TOP MEADOW 508S

WULFS XCLUSIVE 2458X
MISS SYES URBAN 558X
SYES USER FRIENDLY 524U
MISS SYES UNRELATED 544X

ACT BW
86
ADJ WW
661
ADJ YW
923

	CE	BW	WW	YW	MK	TM	CM	SC	DC	YG	CW	RE	MB	\$MTI
EPDS	6	2.6	54	76	24	51	1	.75	4	-.45	4	.75	-.26	41
%Rank	90	80	85	90	55	80	>95	30	>95	55	>95	95	>95	>95

Al'd 6/9/23 to SYES Easy Going 77E. PE'd 6/11/23 - 7/29/23 to WZRK Jimmy Dean 9040J. Safe to SYES Easy Going 77E. Due 3/19/24.

She has the extra body, mass and dimension needed to be a keeper.

95

MISS SYES CH ACCOUNT 227K

PUREBRED(100/89.4) COW • HOMO POLLED (P-2) • BLACK
04/08/2022 • SYES 227K • NPF2508310

WULF'S ZIPLOCK N922Z
LFLC CHECKING ACCOUNT 701C
LFLC 701X XTRA GOOD

ROMN CADILLAC JACK 101C
MISS SYES DIESEL 229G
MISS SYES XPRESSLANE 329A

WULFS XTRACTOR X233X
PLND WINDMILL 922W
WULFS RANSOM 3059R
LFLC DAKOTA BELLE 602U

WULFS APOSTLE T343A
ROMN RITA 28R
ROMN XPRESS LANE 101X
MISS SYES LODESTAR 329S

ACT BW
78
ADJ WW
644
ADJ YW
916

	CE	BW	WW	YW	MK	TM	CM	SC	DC	YG	CW	RE	MB	\$MTI
EPDS	9	-.6	55	78	28	55	6	.6	13	-.51	14	.94	-.21	43
%Rank	60	20	85	85	20	65	50	40	60	35	85	75	95	>95

Al'd 6/10/23 to SYES Easy Going 77E. PE'd 6/11/23 - 7/29/23 to COLE Earning Power 86K. Safe to COLE Earning Power 86K. Due approximately 4/19/24.

Here's a must-see sale day female with a nice combination of volume and capacity.

OPEN HEIFERS



LOT 96

96

MISS SYES JOHN DOE 192L

PUREBRED(100/90) COW • HET POLLED (T) • RED
02/28/2023 • SYES 192L • NPF2604503

SYES EASY GOING 77E
SYES JOHN DOE 123J
MISS DOUBLE AGENT 103G

JYF EXTRA CHUNK 518E
MISS SYES EX CHUNK 192J
MISS SYES URBAN 192X

COLE BUSINESSMAN 104B
MISS SYES RANSOM 76X
SYES DOUBLE AGENT 175D
MISS SYES PETE 103E

JYF CHUNK 35C
TMF MISS 118W
WULFS URBAN COWBOY 2149U
MISS SYES FIRST DOWN 190G

ACT BW
58
ADJ WW
508

	CE	BW	WW	YW	MK	TM	CM	SC	DC	YG	CW	RE	MB	\$MTI
EPDS	14	-1.2	63	100	24	56	9	.68	10	-.56	20	1.1	-.22	46
%Rank	15	15	60	45	55	55	10	40	85	20	65	45	95	90

Miss SYES John Doe is a purebred daughter of SYES John Doe out of our Miss SYES Ex Chunk 192J cow that we think a lot of. This red-hided female is long featured and sound made. She ranks in the top 10% for calving ease maternal and top 15% of the breed for calving ease and birth weight.



LEWIS GRAVITY FLOW G62 • SIRE OF LOT 97

97

MISS SYES GRAVITY FL 171L

PERCENTAGE(82/73.3) COW • HOMO POLLED (P-2) • HOMO BLACK (T)
03/26/2023 • SYES 171L • NXF2604494

AHCC EARNING POWER 900E ET
LEWIS GRAVITY FLOW G62
MISS WULFETTE 2285Z

LFLC CHECKING ACCOUNT 701C
MISS SYES CH ACCOUNT 371J
MISS SYES TRAIL 372B

MAGS ANCHOR
LVLS 9066U
S A V PIONEER 7301
WULFS UNEQUAL MATCH 8280U

WULF'S ZIPLOCK N922Z
LFLC 701X XTRA GOOD
WULFS YUKON TRAIL 8084Y
MISS SYES FINAL TIME 371W

ACT BW
86
ADJ WW
666

	CE	BW	WW	YW	MK	TM	CM	SC	DC	YG	CW	RE	MB	\$MTI
EPDS	10	1.6	72	111	33	69	6	1.01	21	-.31	45	1.11	-.04	53
%Rank	70	75	15	15	2	3	75	25	1	25	30	15	95	85

This is a Limousin female that will catch your eye. Big middled and flexible on the move, Miss SYES Gravity Fl holds her head high and proud. This daughter of Lewis Gravity Flow is going to be a solid breeding piece and good mother when her time comes. Make note, she is double homozygous. She ranks in the top 1% for docility, top 2% for milk and top 15% for weaning weight, yearling weight and ribeye area. An EPD profile like hers is hard to find!



LOT 98

98

MISS SYES JOHN DOE 602L

PUREBRED(100/89.2) COW • HOMO POLLED (P-2) • RED
03/07/2023 • SYES 602L • NPF2604606

SYES EASY GOING 77E
SYES JOHN DOE 123J
MISS DOUBLE AGENT 103G

JYF EXTRA CHUNK 518E
MISS SYES EX CHUNK 602J
MISS BASY WORKTIME 601Y

COLE BUSINESSMAN 104B
MISS SYES RANSOM 76X
SYES DOUBLE AGENT 175D
MISS SYES PETE 103E

JYF CHUNK 35C
TMF MISS 118W
CHTT WORK TIME 4925W
MISS BASY LINEBACKER 603S

ACT BW
62
ADJ WW
539

	CE	BW	WW	YW	MK	TM	CM	SC	DC	YG	CW	RE	MB	\$MTI
EPDS	16	-3.1	58	89	27	56	9	.56	12	-.6	17	1.23	-.09	49
%Rank	10	2	75	70	30	55	10	60	70	10	75	20	70	70

You will want to be the winning bidder on this female! This purebred daughter of SYES John Doe out of Miss SYES Ex Chunk 602J is extremely feminine, sound and correct in her skeleton. Miss SYES John Doe will allow you to rest easy at night. She ranks in the breed's top 2% for birth weight and top 10% for calving ease. You'll want this gal in your herd!

OPEN HEIFERS

99

MISS SYES GEN VISION 681L

LIM-FLEX(65/57.3) COW • HOMO POLLED (T) • HOMO BLACK (T)
03/24/2023 • SYES 681L • LFF2604618

CELL ENVISION 7023E
L7 GENUINE VISION 9033G
MISS L7 567C

AHCC BARN BURNER B907
PBRS ZSA ZSA 246Z
L7 ALL THE ANSWERS 3056A
MISS L7 323A

CONNELLY THUNDER
COLE MISS THUNDER 283Z
COLE 4108P

BALDRIDGE KABOOM K243 KCF
PARKA OF CONANGA 241
COLE MAGNUM 15M
COLE 95G

ACT BW
84
ADJ WW
585

	CE	BW	WW	YW	MK	TM	CM	SC	DC	YG	CW	RE	MB	\$MTI
EPDS	5	4	71	116	24	59	3	1.5	24	-.31	28	.92	.3	65
%Rank	>95	>95	45	40	60	55	95	5	1	15	75	20	45	40

If you like big-boned, attractive cattle then this 65% Lim-Flex is for you! She pounds the ground with power in each step. Miss SYES Gen Vision is sired by L7 Genuine Vision and we appreciate his influence in herd. This female posts a balanced EPD profile.



LOT 99

100

MISS SYES GEN VISION 368L

PUREBRED(90/80.6) COW • HOMO POLLED (T) • HOMO BLACK (T)
03/22/2023 • SYES 368L • NPF2604570

CELL ENVISION 7023E
L7 GENUINE VISION 9033G
MISS L7 567C

AHCC BARN BURNER B907
PBRS ZSA ZSA 246Z
L7 ALL THE ANSWERS 3056A
MISS L7 323A

SYES EASY GOING 77E
MISS SYES EASY GOING 369H
MISS SYES STETSON 368Y

COLE BUSINESSMAN 104B
MISS SYES RANSOM 76X
RUNL STETSON 850S
MISS SYES 467T 367W

ACT BW
70
ADJ WW
540

	CE	BW	WW	YW	MK	TM	CM	SC	DC	YG	CW	RE	MB	\$MTI
EPDS	11	.6	70	105	19	54	7	.95	24	-.53	9	1.13	.03	57
%Rank	40	40	30	35	95	70	35	15	1	30	95	40	30	25

Miss SYES Gen Vision will be a production machine. She is double homozygous and totes a balanced set of EPDs. This purebred daughter of L7 Genuine Vision comes from our Miss SYES Easy Going 369H female who doesn't miss. These genetics are good, don't miss them.



L7 GENUINE VISION 9033G • SIRE OF LOT 100

101

MISS SYES GEN VISION 28L

PUREBRED(90/81.1) COW • HOMO POLLED (P-1) • HET BLACK (T)
04/03/2023 • SYES 28L • NPF2604420

CELL ENVISION 7023E
L7 GENUINE VISION 9033G
MISS L7 567C

AHCC BARN BURNER B907
PBRS ZSA ZSA 246Z
L7 ALL THE ANSWERS 3056A
MISS L7 323A

LFLC ARBY 5027A
MISS SYES ARBY 29F
MISS SYES 923U 30Z

LFLC WINDFALL 56W
HOEL RIGAMAROLE
MR SYES TRACKER 923U
MISS SYES SPACE SHIP 31W

ACT BW
84
ADJ WW
608

	CE	BW	WW	YW	MK	TM	CM	SC	DC	YG	CW	RE	MB	\$MTI
EPDS	7	2.9	66	107	25	58	2	1.25	15	-.34	20	.82	0	53
%Rank	80	85	45	30	45	45	95	10	20	90	65	90	40	50

This one knows she's special. Miss SYES Gen Vision is the kind of female all cattlemen appreciate—big back and middle, long neck and attractive lines. She is soft footed and homozygous polled. This female brings forth a great package and you should have her circled sale day!



LOT 101

OPEN HEIFERS



LOT 102

102

MISS ONSY JZ AMAZING 692L

PUREBRED(93/80.4) COW • HOMO POLLED (T) • RED
03/30/2023 • ONSY 692L • NPF2604627

WULFS AMAZING BULL T341A
BAR JZ AMAZING BULL 157H
BAR JZ TENA 481C

WULFS DEVILS LAKE K118D ET
ONSY HENNESSY 693H
MISS ONSY ELLIE 692E

HUNT MR JOCK 44J
WULFS ULTRA DIAMOND 8571U
WULFS ZERO TURN X292Z
BAR JZ COUNTESS 902W

WULFS BILLY THE KID K234B
WULFS YOUR CHOICE 1419Y
COLE BUSINESSMAN 104B
MISS WASY AMY 692A

ACT BW
90
ADJ WW
547

	CE	BW	WW	YW	MK	TM	CM	SC	DC	YG	CW	RE	MB	\$MTI
EPDS	1	2.6	64	91	29	60	-1	1.25	5	-.58	29	1.32	.09	57
%Rank	>95	80	55	65	15	35	>95	10	95	15	35	10	20	25

Here is a purebred daughter of Bar JZ Amazing Bull 157H that has done a great job for our program. This female has a world of potential in our eyes. Miss ONSY JZ Amazing will work in a variety of programs, be sure to make that yours. She ranks in the top 10% of the breed for ribeye area and scrotal and top 15% for milk and yield grade.



LOT 103

103

MISS SYES JIMMY DEAN 335L

PUREBRED(93/83.9) COW • HOMO POLLED (T) • RED
03/03/2023 • SYES 335L • NPF2604562

WULFS GALLAGHER 7056G
WZRK JIMMY DEAN 9040J
WZRK 9040G

GV BIG TIMER 328E
MISS SYES GV 334J
MISS SYES URBAN 332Z

WULFS XCELLSIOR X252X
WULFS EDWINNA 7056E
L7 EVERLAST 7007E
WZRK ETTA 7061E

WULFS BIG TIMER 2004B
GV MS BEEFMAKER PRIDE 575C
WULFS URBAN COWBOY 2149U
MISS SYES LADYS MAN 330S

ACT BW
76
ADJ WW
565

	CE	BW	WW	YW	MK	TM	CM	SC	DC	YG	CW	RE	MB	\$MTI
EPDS	13	-.4	58	87	30	59	7	.33	20	-.54	34	1.37	.17	58
%Rank	25	25	75	70	15	40	35	80	1	25	20	10	10	20

Miss SYES Jimmy Dean 335L is a long-bodied purebred female that will go out and make her new owner proud. Her sire, WZRK Jimmy Dean 9040J, has thrown great progeny in past years and she is no different. This homozygous polled female has an impressive numeric profile you will want to be sure and study!

104

MISS SYES GENESIS 223L

PUREBRED(93/82.8) COW • HOMO POLLED (T) • HOMO BLACK (T)
05/04/2023 • SYES 223L • NPF2604520

HUNT CREDENTIALS 37C ET
COLE GENESIS 86G
COLE MISS XRATED 354A

SYES USER FRIENDLY 524U
MISS SYES FRIENDLY 221Z
MISS SYES ROSCOE 821X

HUNT TESTAMENT 40T
JKTW WHISKEY RIVER 985 W
MRL X-RATED 014X
COLE MISS PRODUCTION 874U

WULFS RANSOM 3059R
MISS SYES JUSTICE 224S
PLND ROSCOE 051R
MISS SYES FIRST DOWN 820G

ACT BW
78
ADJ WW
557

	CE	BW	WW	YW	MK	TM	CM	SC	DC	YG	CW	RE	MB	\$MTI
EPDS	11	2.4	76	119	26	64	5	.6	15	-.25	22	.61	.19	62
%Rank	40	75	15	10	35	15	65	40	20	>95	60	>95	10	10

Miss SYES Genesis is a double homozygous, 93% purebred daughter of COLE Genesis 86G. She has growth traits in her genetic makeup—note her 10% yearling weight ranking. Females of this kind do not go out of style and her production ability will speak for itself. Look her up sale day.

105

MISS SYES JIM DEAN 21L

PUREBRED(93/84) COW • HET POLLED (T) • RED
04/13/2023 • SYES 21L • NPF2604414

WULFS GALLAGHER 7056G
WZRK JIMMY DEAN 9040J
WZRK 9040G

ROMN CADILLAC JACK 101C
MISS SYES CADILLAC 9H
MISS SYES ARBY 8D

WULFS XCELLSIOR X252X
WULFS EDWINNA 7056E
L7 EVERLAST 7007E
WZRK ETTA 7061E

WULFS APOSTLE T343A
ROMN RITA 28R
LFLC ARBY 5027A
MISS SYES FRIENDLY 8Z

ACT BW
72
ADJ WW
590

	CE	BW	WW	YW	MK	TM	CM	SC	DC	YG	CW	RE	MB	\$MTI
EPDS	11	0	65	94	28	60	4	.65	12	-.48	29	1.17	-.02	53
%Rank	40	30	50	60	20	35	80	40	70	45	35	30	50	50

Here is a female we have thought a lot of since she hit the ground. Miss SYES Jim Dean 21L is a purebred daughter of WZRK Jimmy Dean 9040J that moves freely but with purpose. She has great structure and muscle without compromising femininity. She'll make a great addition to your herd.

OPEN HEIFERS

106

MISS SYES HERCULES 83L

PUREBRED(100/84.8) COW • HOMO POLLED (P-2) • BLACK
04/08/2023 • SYES 83L • NPF2604452

CELL ENVISION 7023E
RMKR HERCULES 020H
RMKR YASMINE 128Y

AHCC BARN BURNER B907
PBRS ZSA ZSA 246Z
GTBR UNDERTAKER 6U
RMKR UNICORN 854U

CHTT WORK TIME 4925W
MISS SYES WORKTIME 584D
MISS SYES XPRESSLANE 584A

HC MONTANA JUSTICE 694
CHTT3625S
ROMN XPRESS LANE 101X
MISS SYES REVOLVER 384U

ACT BW
88
ADJ WW
565

	CE	BW	WW	YW	MK	TM	CM	SC	DC	YG	CW	RE	MB	\$MTI
EPDS	8	1.9	67	102	26	60	5	.95	11	-.48	29	1.08	-.21	46
%Rank	70	65	45	40	35	35	65	15	75	45	35	50	95	85

Miss SYES Hercules packs a solid, uniform set of EPDs into a homozygous polled, purebred package. This is a female you won't want to miss out on. She brings several industry relevant traits to the table, allowing her to work in a magnitude of programs. Don't miss her.



RMKR HERCULES 020H • SIRE OF LOT 106

107

MISS SYES JOHN DOE 629L

PUREBRED(100/89.4) COW • HET POLLED (T) • RED
03/02/2023 • SYES 629L • NPF2604609

SYES EASY GOING 77E
SYES JOHN DOE 123J
MISS DOUBLE AGENT 103G

COLE BUSINESSMAN 104B
MISS SYES RANSOM 76X
SYES DOUBLE AGENT 175D
MISS SYES PETE 103E

WULFS DEVILS LAKE K118D ET
MISS SYES DEV LAKE 629J
MISS SYES PETE 629F

WULFS BILLY THE KID K234B
WULFS YOUR CHOICE 1419Y
L7 3014A
MISS WASY LINEBACKER 621S

ACT BW
68
ADJ WW
526

	CE	BW	WW	YW	MK	TM	CM	SC	DC	YG	CW	RE	MB	\$MTI
EPDS	13	-1.4	63	96	22	54	6	.49	20	-.59	16	1.3	-.25	45
%Rank	25	10	60	55	75	70	50	70	1	15	75	15	>95	95

If you like easy calving and carcass merit, look here! Top 10% ranking for birth weight and top 15% rankings for yield grade and ribeye area—Miss SYES John Doe 629L will help make your calving season a bit easier. This SYES John Doe 123J daughter is out of Miss SYES Dev Lake 629J making her a polled, red-hided purebred.



LOT 107

108

MISS SYES EMPIRE 24L

PUREBRED(100/90.8) COW • HOMO POLLED (P-1) • BLACK
04/29/2023 • SYES 24L • NPF2604416

GREENWOOD CANADIAN MADE ET
LFLC EMPIRE 903E
LFLC BABY GOT BACK 903B

GREENWOOD PLD XTRA CHARGE
GREENWOOD WISTERIA LANE
WULFS XCELLSIOR X252X
LFLC DAKOTA BELLE 812Z

JYF ZEEK 151Z
MISS SYES ZEEK 25C
MISS SYES PLATINUM 425T

AHCC WOOD MOUNTAIN W796
TMF MISS 627T
RPLF PLATINUM 936P
MISS SYES PAYDAY 8425F

ACT BW
80
ADJ WW
594

	CE	BW	WW	YW	MK	TM	CM	SC	DC	YG	CW	RE	MB	\$MTI
EPDS	14	-.1	53	72	31	58	8	.3	13	-.6	20	1.22	-.21	43
%Rank	15	30	85	90	10	45	25	80	60	10	65	25	95	>95

Rounding out our sale is Miss SYES Empire 24L. She is a purebred, homozygous polled, special type of female that does many things right. We appreciate her extra dimension, power and ability to get out and move. She posts a solid set of EPDs to back her potential. This gal will be a great addition to any herd.



LFLC EMPIRE 903E • SIRE OF LOT 108

REFERENCE SIRES

	CE	BW	WW	YW	MK	TM	CM	SC	DC	YG	CW	RE	MB	\$MTI
BAR JZ AMAZING BULL 157H WULFS AMAZING BULL T341A x BAR JZ TENA 481C	8	-0.5	57	78	34	62	3	1.7	6	-0.52	-4	0.84	-0.08	48
COLE EARNING POWER 86K COLE EARNING POWER 82H x COLE MISS CURTAIN CALL 046H	16	-1.1	65	110	28	60	9	1.6	12	-0.26	30	0.74	0.24	61
COLE GENESIS 86G HUNT CREDENTIALS 37C ET x COLE MISS XRATED 354A	16	-1.6	67	106	34	68	12	0.6	15	-0.06	37	0.51	0.68	76
JBV YELLOWSTONE 901G AHCC EARNING POWER 900E ET x JBV GIRL CRUSH 422B	4	3.1	71	123	30	66	4	2.9	13	-0.34	46	1.06	0.25	64
JYF EXTRA CHUNK 518E JYF CHUNK 35C x TMF MISS 118W	-2	6.8	76	115	22	60	0	1.0	-6	-0.69	35	1.57	0.01	59
L7 GENUINE VISION 9033G CELL ENVISION 7023E x MISS L7 567C	2	5.3	79	129	24	63	0	1.6	26	-0.43	29	1.20	0.12	62
LEWIS GRAVITY FLOW G62 AHCC EARNING POWER 900E ET x MISS WULFETTE 2285Z	14	-1.5	74	122	36	72	10	1.8	19	-0.09	43	0.81	0.29	64
LFLC CHECKING ACCOUNT 701C WULFS ZIPLOCK N922Z x LFLC 701X XTRA GOOD	12	-0.8	69	92	27	61	7	0.3	7	-0.63	17	1.15	-0.38	42
RMKR HERCULES 020H CELL ENVISION 7023E x RMKR YASMINE 128Y	7	3.5	95	148	23	71	5	1.2	12	-0.46	53	1.45	-0.23	54
ROMN WALK THE WALK 101W WULFS RIDGLEY 3172R x ROMN TUTU 40T	7	1.2	60	87	29	59	9	1.4	16	-0.61	20	1.15	-0.06	51
RUNL JUSTIFIED 364 J RUNL RIALTO 135R x RUNL EVENING GLOW 205 E	13	-0.8	92	137	19	65	9	0.6	16	-0.43	48	1.27	0.04	63
SYES EASY GOING 77E COLE BUSINESSMAN 104B x MISS SYES RANSOM 76X	19	-4.2	58	90	18	47	13	0.7	19	-0.57	18	1.28	-0.31	41
SYES ENCORE 315E LFLC CHECKING ACCOUNT 701C x MISS SYES ROSCOE 316X	17	-2.5	67	97	18	51	11	0.4	18	-0.86	16	1.63	-0.28	47
SYES HAT TRICK 230H TREF EZ STREET 107E x MISS SYES AGENT 230F	11	-1.7	61	83	31	61	8	0.7	21	-0.62	27	1.35	-0.20	46
SYES JOHN DOE 123J SYES EASY GOING 77E x MISS DOUBLE AGENT 103G	22	-5.5	58	90	23	52	14	0.6	20	-0.60	18	1.30	-0.31	41
SYES JUNCTION 358J L7 GENUINE VISION 9033G x MISS SYES WORKTIME 357C	0	5.8	74	120	24	61	0	1.2	23	-0.51	33	1.21	-0.03	56
TREF EZ STREET 107E WULFS CAPER 3303C x TREF COCOA BEAN 107C	8	0.1	72	101	33	69	8	1.0	18	-0.61	33	1.50	-0.03	55
WULFS DEVILS LAKE K118D ET WULFS BILLY THE KID K234B x WULFS YOUR CHOICE 1419Y	1	5.3	74	114	28	64	-2	0.6	22	-0.61	34	1.56	0.21	65
WZRK JIMMY DEAN 9040J WULFS GALLAGHER 7056G x WZRK 9040G	17	-2.9	72	107	27	63	9	0.2	20	-0.52	41	1.37	0.14	61



SYES EASY GOING 77E



SYES ENCORE 315E



SYES JOHN DOE 123J

NOTES

Thank You

for attending the
2024 Symens Brothers
Muscle Up
For Profit Sale.
We look forward
to seeing you
next year.



Symens Brothers
SYES Your Guarantee of Predictable Genetics

44th Annual Muscle Up For Profit Sale

AVERAGES

LOTS		GROSS	AVERAGE
_____	Yearling Bulls	_____	_____
_____	Two-Year-Old Bulls	_____	_____
_____	Bred Heifers	_____	_____
_____	Open Heifers	_____	_____
_____	TOTALS	_____	_____



Marketing Management

2005 Ruhl Drive
Guthrie, OK 73044

44th Annual Muscle Up For Profit Sale

FEBRUARY 22, 2024 • 1 PM
At The Farm • Amherst, SD

Selling 85 Bulls & 23 Females

Symens
SYES **Brothers**
Your Guarantee of Predictable Genetics

