



BULL *Wieczorek Limousin* **SALE**

FEBRUARY 23, 2024 • 1PM CST • AT THE RANCH • MT VERNON, SD



SELLING 52 REGISTERED LIMOUSIN & LIM-FLEX LOTS
FEATURE BULLS | YEARLING BULLS | 2-YEAR OLD BULLS

44TH ANNUAL BULL SALE 2.23.24

AT THE RANCH MT VERNON, SD | 1PM CST

SALE LOCATION

GPS Location: 39768 267th St. • Mt. Vernon, SD 57363

From the North: From I-90 take exit 319. Head south to 267th street. Turn east 3/4 mile, sale facility on north side of the road.

From the South: From Highway 44, go 9 miles north on 396th Ave to 267th street, then 3/4 mile east, sale facility on north side of the road.

SPECIAL FEATURES

Free wintering until April 1

Sight unseen purchase program - Contact Wieczorek Limousin direct or any member of the sale staff to discuss your needs and every effort will be made to describe the bulls accurately.

If you get the bull and don't like him, you don't own him.

Free delivery to 250 miles (central points beyond)

1/2 down, balance due upon delivery

All bulls unconditionally guaranteed first breeding season

All bulls have been genetically tested & carry GE EPDs and are parent verified

All bulls sell under the terms and conditions of the North American Limousin Foundation and published EPD's are in accordance with the association as of January 25, 2024

View videos of offering and a digital catalog on our website

MARKETING TEAM



KILEY MCKINNA
402-350-3447

WILEY FANTA
320-287-0751

AUCTIONEER C.K. "Sonny" Booth

SCHEDULE OF EVENTS

9:30 AM-Noon.....Viewing of Bulls

11:30-12:30.....Limousin Beef Lunch

1:00 PM.....Sale Begins

LIVESTOCK REPRESENTATIVES

Scott Dirk, Tri-State Livestock News.....605-380-6024

Scott Manley, Special Guest.....417-860-5250

Kadon Leddy, Cattle Business Weekly.....605-924-0757

SALE DAY PHONES

Curt Wieczorek.....605-999-1298

Kiley McKinna.....402-350-3447

Wiley Fanta.....320-287-0751

ACCOMMODATIONS

Comfort Inn & Suites, Mitchell • 605-990-2400

Just Off I-90 at Exit 332

Hampton Inn, Mitchell • 605-996-1575

Just Off I-90 at Exit 332

Curt & Leanne Wieczorek

HOME.....605-227-4601

CELL.....605-999-1298

39768 267TH ST. | MT. VERNON, SD

ONLINE INTERNET PROVIDER



WWW.DVAUCTION.COM • YOU MUST REGISTER TO BID ONLINE PRIOR TO THE SALE.

Email: clwzrk@santel.net

YOUR CALL OR VISIT IS WELCOME ANYTIME!

FOR MORE INFORMATION REGARDING THE SALE, GIVE US OR ANY MEMBER OF OUR TRUSTED MARKETING TEAM A CALL.

www.wieczoreklimousin.com

WZPK

Welcome Gentlemen

Welcome to the 44th annual Wieczorek Limousin Production Sale. Thank you for your interest in our program and for giving us the opportunity to serve a portion of your seedstock needs. This is something that we consider a privilege and take very seriously.

It's been our long standing goal to make your bull buying experience as stress free as possible. Notice, as you look through the catalog you will see complete performance data, EPDs and percentiles for each lot. Furthermore, we've elected to invest in genomic testing for all our registered sale bulls to further increase the accuracy of the EPD's provided. Note, a more detailed explanation of GE EPD's and the potential realized value they offer can be found on page 16. Additional information that will be available sale day will be adjusted scrotal data and carcass ultrasound information.

From a customer service standpoint, all bulls selling are unconditionally guaranteed for the first breeding season. This includes death, injury and dissatisfaction. We will also keep your purchase until April 1 and then arrange delivery up to 250 miles at absolutely no cost to you. If you live beyond 250 miles, we will work with you in locating a satisfactory central point. Wieczorek Limousin will also provide you the option of paying 1/2 down sale day with the balance due at delivery.

Feel free to stop by the ranch any time prior to the sale to view the bulls. If you have questions about the offering or need assistance with travel arrangements, just pick up the phone and give us a call, we would be happy to assist. Again, we look forward to seeing you at the ranch on the 23rd.

Sincerely,
The Wieczorek Family

**Curt and
Leanne**

Ryan & Danielle

Bradley, Megan, Josie & Isla

Emily





1

09

W I D

I

WIECZOREK *Faith, Family, Friends* LIMOUSIN

SPRING YEARLING *Bulls*

The importance of quality herd bulls, be it in a commercial or seedstock operation, cannot be stressed enough.

Herd bull decisions made today influence your program, either positively or negatively, for years to come through daughters retained in the herd. At Wieczorek Limousin we have always believed in having the absolute best bull power available in the industry. As such, we have invested heavily over the years to ensure only the best sires walk behind our progressive AI and embryo program. As you study the bulls offered for sale in this catalog, and as you look over the reference sire listing on the following pages, you will notice the positive influence bulls owned by Wieczorek or bulls carrying the WZRK prefix, are currently having on our program.

By becoming a customer of Wieczorek Limousin, you are not simply buying a new herd bull, you are buying into our philosophy of continuously striving to improve the sire side of the breeding equation.



Feature

CELL
HISTORY BUFF
0245H ET

WZRK**LOS TORO**7064L

01/18/2023 • PERCENTAGE(83/74.1) • HOMO POLLED (P-2) • HOMO BLACK (P-2) • NXM2604964 • WZRK 7064L • BULL

Act. BW: 96
Adj. WW: 828
Adj. YW: 1525
Adj. REA: 16.38
Adj. FAT: 0.31
Adj. IMF: 2.615
Adj. SC:

CELL ENVISION 7023E
CELL HISTORY BUFF 0245H ET
CELL MISS RESPONDER 6078D

MAGS AVIATOR
WZRK EMBER 7064E
WZRK MISS RANGERIDER 0071

AHCC BARN BURNER B907
PBRS ZSA ZSA 246Z
COLE ABSOLUTE 05A
MAGS YODH
MAGS WINSTON
MAGS XTRA REST
WULFS RANGE RIDER 2056R
WZRK MISS RENEGADE 7059T



CED	BW	WW	YW	MK	TM	CEM	SC	DOC	YG	CW	REA	MB	\$MTI
7	3.2	91	145	24	70	5	0.9	16	-0.28	53	1.2	0.2	67.34
95%	95%	1%	1%	40%	3%	85%	35%	5%	25%	15%	10%	70%	20%

Feed Efficiency Data:
ADG 4.36 // Feed/Gain 5.24

What an exceptional way to lead off this impressive offering! WZRK Los Toro 7064L combines a notable pedigree, a breed-leading EPD profile and an eye-catching phenotype. His sire, CELL History Buff 0245H has proven to transmit progeny that pair big data with stand-out phenotypes in our program. His dam is a beautiful-patterned MAGS Aviator daughter. On paper he has numbers worth studying take note of his breed-leading weaning weight and yearling weight, both traits rank in the top 1%. He also ranks in the top 3% for total maternal top 5% for docility, top 15% for carcass weight, top 10% for ribeye, and top 20% for \$MTI. Aside from his numerical advantages, phenotypically he is heavily structured, big-bodied, and level-topped, with extra muscle expression and free moving off both ends of his skeleton. What's more, he is homozygous polled and homozygous black. Don't miss out on your chance to own this remarkable individual who will predictably advance your breeding program to new heights.



Feature

WULFS
EMPRIZE
2424E

2

WZRK **LOCK & LOAD** 7019L

01/16/2023 • LIM-FLEX(69/63.5) • HOMO POLLED (P-1) • RED • LFM2604958 • WZRK 7019L • BULL

Act. BW: 84
Adj. WW: 734
Adj. YW: 1362
Adj. REA: 18.24
Adj. FAT: 0.24
Adj. IMF: 2.065
Adj. SC:

BIEBER DEEP END B597
WULFS EMPRIZE 2424E
WULFS ZUNI 2424Z

WULFS XCLUSIVE 2458X
WZRK EVANNA 7019E
WZRK MS TUFF ENUF 2001Z

BIEBER ROLLIN DEEP Y118
BIEBER LAURA 158W
WZRK GENESIS 532E
WULFS PLEASURE 4251P
WZRK PRIMESTAR 861P
WULFS MISSIVE 2258M
AHCC RED XPLOSION X615
WZRK MISS KABOOM 4011P

GE-EPDs
North American Limousin Foundation

WZRK

CED	BW	WW	YW	MK	TM	CEM	SC	DOC	YG	CW	REA	MB	\$MTI
12	0.5	82	124	24	65	8	0.9	18	-0.5	48	1.29	0.21	66.48
30%	35%	10%	25%	60%	25%	20%	50%	3%	2%	15%	1%	65%	30%

Feed Efficiency Data:
ADG 3.93 // Feed/Gain 5.26

This red homozygous polled herd sire prospect is sure to be a crowd favorite sale day. Visually, he is heavily structured, and level-topped, with extra muscle expression and free moving off both ends of his skeleton. He is sired by Wulfs Emprize 2424E, the Bieber Deep End B5597 son that was a top seller in a past Wulf Cattle Opportunity Sale going to Magness Land and Cattle. This sire caught the attention of many since he was top of the breed for growth, docility, ribeye, and marbling. His dam is a 6-year-old Wulfs Xclusive 2458X daughter, that has breed-leading growth. On paper WZRK Lock & Load 7019L has impressive stats, ranking high for both growth and carcass traits. Make no mistake and be sure to have him on the top of your list sale day.



Feature

CELL
HISTORY BUFF
0245H ET

3

WZRK LAREDO 9027L

02/19/2023 • PUREBRED(88/78.7) • HOMO POLLED (P-2) • BLACK • NPM2605028 • WZRK 9027L • BULL

Act. BW: 95
Adj. WW: 815
Adj. YW: 1482
Adj. REA: 17.22
Adj. FAT: 0.27
Adj. IMF: 2.335
Adj. SC:

CELL ENVISION 7023E
CELL HISTORY BUFF 0245H ET
CELL MISS RESPONDER 6078D
HUNT CREDENTIALS 37C ET
WZRK 9027G
WZRK MS RX 2015Z

AHCC BARN BURNER B907
PBR5 ZSA ZSA 2462
COLE ABSOLUTE 05A
MAGS YODH
HUNT TESTAMENT 40T
JKTW WHISKEY RIVER 985 W
AHCC RED XPLOSION X615
WZRK MISS RAWHIDE 4107P

Big-time growth bull here! If you're searching for a herd sire prospect that will add pounds look no further than WZRK Laredo 9027L. He recorded a 815lb 205-day weight that ratio'd a 117. This explosive growth could be predicted due to his performance EPDs, his weaning weight and yearling weight both rank in the top 15% of the breed. His sire, CELL History Buff 0245H was our purchase from the 2021 Linhart Limousin Bull Sale. This son of CELL Envision 7023E was a true standout phenotypically and numerically. His dam is a 4-year-old Hunt Credentials 37C daughter. This combination of presence and numbers projects him to be the type of herd bull that produces well-balanced, polled, stout calves year in and year out.

GE-EPDs

CED	BW	WW	YW	MK	TM	CEM	SC	DOC	YG	CW	REA	MB	\$MTI
6	2.8	75	118	30	68	4	1.57	12	-0.43	43	1.06	0.17	62.5
90%	80%	15%	15%	15%	5%	80%	3%	70%	65%	5%	55%	10%	5%

Feed Efficiency Data:
ADG 4.17 // Feed/Gain 4.67



Feature

WZRK
GAME CHANGER
4015G

4

WZRK **LONGMIRE** 6042L

01/23/2023 • PUREBRED(100/89) • HOMO POLLED (P-2) • RED • NPM2604978 • WZRK 6042L • BULL

Act. BW: 102
Adj. WW: 770
Adj. YW: 1432
Adj. REA: 16.68
Adj. FAT: 0.43
Adj. IMF: 3.25
Adj. SC:

HUNT CREDENTIALS 37C ET
WZRK GAME CHANGER 4015G
WZRK MISS TUFFENUFF 4015B

WULFS APOSTLE T343A
WZRK DREAM CATCHER 6042D
WZRK MISS NASCAR 5050R

HUNT TESTAMENT 40T
JKTW WHISKEY RIVER 985 W
ROMN TUFF ENUFF 103T
WZRK MISS MTO 0010X
WULFS YANKEE K689Y
WULFS ULTRA DIAMOND 8571U
WULFS NASCAR G949N
WZRK MISS H FIELD 1055L

GE-EPDs

CED	BW	WW	YW	MK	TM	CEM	SC	DOC	YG	CW	REA	MB	\$MTI
6	1.5	67	105	35	68	4	1.35	14	-0.42	41	1.1	0.15	59.25
90%	55%	45%	35%	1%	5%	80%	4%	45%	65%	10%	45%	15%	15%

Feed Efficiency Data:
ADG 4.14 // Feed/Gain 4.48

This bull is an absolute stand-out in the offering. Heavy muscled, rugged designed, big-bodied, and sound on the move. He is a highly usable and versatile WZRK Game Changer 4015G son, the top-selling bull in our 2020 sale selling to Coleman Limousin. Game Changer progeny have tremendous base width, center capacity, and muscle expression. This lot's dam is a maternal patterned Wulfs Apostle T343A daughter. On paper, he ranks in the top 15% for both marbling and \$MTI paired with high rankings in numerous other industry-relevant traits. He has everything completely stacked in his favor.



Feature

TMCK
CASH FLOW
247C
PATERNAL GRAND SIRE

5

WZRK LOCOMOTIVE 9212L

01/17/2023 • LIM-FLEX(60/54.8) • HOMO POLLED (P-2) • BLACK • LFM2604962 • WZRK 9212L • BULL

Act. BW: 99
Adj. WW: 764
Adj. YW: 1520
Adj. REA: 14.06
Adj. FAT: 0.44
Adj. IMF: 2.28
Adj. SC:

TMCK CASH FLOW 247C
WZRK HOMETOWN 4055H
WZRK MISS TUFFENUFF 4055B

BIEBER LET'S ROLL B563
WZRK 9212 ET
WZRK MISS RAWHIDE 8055U

MAGS ALI
TMCK NINA 17X
ROMN TUFF ENUFF 103T
WZRK MISS NASCAR 8044U
BIEBER ROLLIN DEEP Y118
BASIN PRIMROSE 2043
RAWHIDE 740L
WZRK MISS KUDOS 5033R

This herd sire prospect is an absolute eye-catcher. Stout featured, long-bodied, and wide-based. He weaned at 764 lbs. to ratio a 109. He is sired by WZRK Hometown 405H, the TMCK Cash Flow 247C son that was a top seller in a past bull sale selling to Berti Limousin. This sire caught the attention of many since he was top of the breed for growth, docility, and marbling. His dam is a Bieber Lets Roll B563 daughter, a red Lim-Flex female who has done a great job. On paper WZRK Locomotive 9212L has exceptional growth ranking in the top 10% for both weaning weight and yearling weight. Also, take note of his 0.96 ribeye which ranks in the top 15%. This homozygous polled black Lim-Flex is going to do big things for the winning bidder. Make that be you.

GE-EPDs

CED	BW	WW	YW	MK	TM	CEM	SC	DOC	YG	CW	REA	MB	\$MTI
6	2.4	84	133	28	71	4	1.05	12	-0.2	53	0.96	0.44	73.27
95%	85%	10%	10%	25%	10%	85%	40%	65%	40%	10%	15%	20%	10%

Feed Efficiency Data:
ADG 4.72 // Feed/Gain 5.48



Feature

WULFS
EISENHOWER
3616E

6

WZRK LINEBACKER 4010L

02/14/2023 • PUREBRED(93/82.2) • HOMO POLLED (P-1) • RED • NPM2605011 • WZRK 4010L • BULL

WULFS BILLY THE KID K234B
WULFS EISENHOWER 3616E
WULFS ABRIL 3616A

RUNL STETSON 850S
WULFS UNIQUE 8217U
WULFS X SIGN HERE X578X
WULFS MYRENE 2332M
WULFS RANSOM 3059R
ROMN ROBERTA 35R
WULFS NASCAR G949N
WZRK MISS LINEBACKER 6001

ROMN TUFF ENUFF 103T
WZRK MISS TUFFENUFF 4010B
WZRK MISS NASCAR 2061Z

Act. BW: 100
Adj. WW: 701
Adj. YW: 1290
Adj. REA: 15.02
Adj. FAT: 0.28
Adj. IMF: 2.49
Adj. SC:

GE-EPDs

CED	BW	WW	YW	MK	TM	CEM	SC	DOC	YG	CW	REA	MB	\$MTI
12	1.6	77	119	28	66	8	0.9	15	-0.38	32	0.85	0.11	60.42
30%	60%	10%	10%	20%	10%	25%	15%	20%	80%	25%	90%	15%	10%

Feed Efficiency Data:
ADG 3.68 // Feed/Gain 5.80

Check out this surefire crowd favorite sale day! Visually the terms, big-footed, deep-bodied, thick, and rugged describe this luncker. On paper this purebred herd bull prospect traces back to the famous Wulfs Eisenhower sire, ranks in the top 20% or better for weaning weight, yearling weight, milk, total maternal, scrotal, docility, marbling, and \$MTI. There's little doubt he'll sire heavy-weight calves that'll suit the mainstream marketplace. The bottom line is, if you have a set of cattle that you want to make thicker, stouter, and heavier - we think he'll do it.



Feature

CJSL
Data Bank
6124D

7 WZRK **LOSS FOR WORDS** 7208L

02/08/2023 • PERCENTAGE(76/67.8) • HOMO POLLED (P-2) • HOMO BLACK (T) • NXM2604995 • WZRK 7208L • BULL

Act. BW: 101
Adj. WW: 744
Adj. YW: 1451
Adj. REA: 14.1
Adj. FAT: 0.41
Adj. IMF: 2.51
Adj. SC:

MAGS ANCHOR
CJSL **Data Bank 6124D ET**
AUTO CARMINDA 656S

TMCK CASH FLOW 247C
WZRK **ENTOURAGE 7208 ET**
WZRK **MISS TUFFENUFF 1038Y**

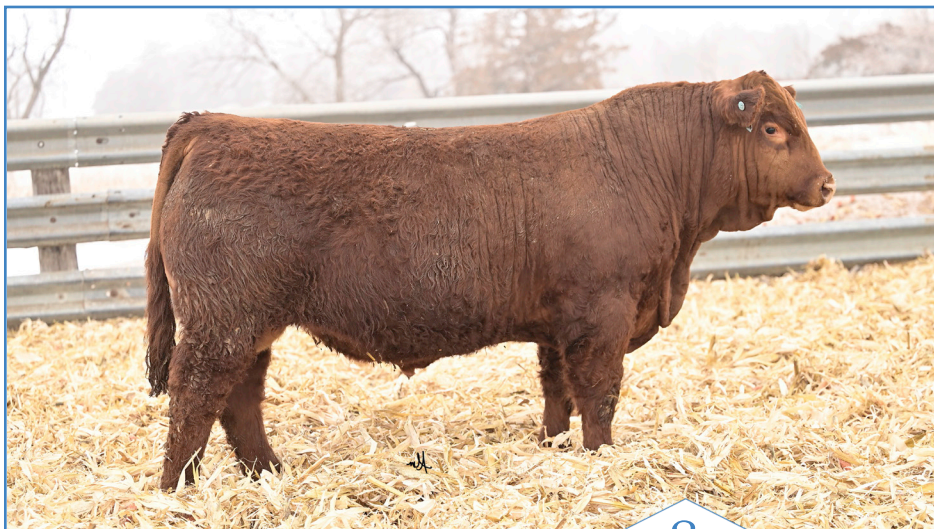
LH WAR HERO 195W
MGS XIPHOPAGOUS
JCL LODESTAR 27L
AUTO CARMINDA 872P
MAGS ALLI
TMCK NINA 17X
ROMN TUFF ENUFF 103T
WZRK **MISS NASCAR 5057R**

GE-EPDs

CED	BW	WW	YW	MK	TM	CEM	SC	DOC	YG	CW	REA	MB	\$MTI
8	1.6	81	127	20	61	5	0.65	18	-0.02	46	0.49	0.37	68.28
90%	75%	4%	5%	75%	20%	85%	65%	1%	75%	30%	80%	40%	20%

Feed Efficiency Data:
ADG 4.42 // Feed/Gain 5.90

Here's one that comes to us in an extra heavy muscled package and carries that traditional Limousin look that made the breed popular. Visually, this son of the high profile A.I. sire CJSL Data Bank 612D is thick-ended, wide-topped, and structurally correct. On paper, he excels ranking in the top 5% for both weaning weight and yearling weight. Note, he posted north of 700+ pounds of adjusted weaning weight. Make no mistake and be sure to have this outstanding individual on your short list on February 23!



8



9

8 WZRK LEADER OF THE PACK 7035L

01/22/2023 • PERCENTAGE(85/76) • HOMO POLLED (T) • RED • NXM2604976 • WZRK 7035L • BULL

Act. BW: 91
Adj. WW: 704
Adj. YW: 1362
Adj. REA: 16.96
Adj. FAT: 0.39
Adj. IMF: 2.085
Adj. SC:

TMCK CASH FLOW 247C
WZRK HOMETOWN 4055H
WZRK MISS TUFFENUFF 4055B

WULFS APOSTLE T343A
WZRK ELIZABETH 7035E
WZRK MISS COWBOY 1036Y

MAGS ALI
TMCK NINA 17X
ROMN TUFF ENUFF 103T
WZRK MISS NASCAR 8044U
WULFS YANKEE K689Y
WULFS ULTRA DIAMOND 8571U
WULFS URBAN COWBOY 2149U
WZRK MISS KABOOM 3043N

GE-EPDS

WZRK

CED	BW	WW	YW	MK	TM	CEM	SC	DOC	YG	CW	REA	MB	\$MTI
6	0.6	69	103	27	62	4	0.85	16	-0.18	36	0.68	0.33	64.25
>95%	60%	20%	25%	15%	15%	95%	40%	5%	40%	55%	55%	45%	30%

Feed Efficiency Data:
ADG 4.11 // Feed/Gain 4.94

If you like Percentage, red, homozygous polled, bulls that are heavily muscled, high growth, and loaded with rib-eye area study this son of WZRK Hometown 4055H and consider your search over! To take it one step further, on paper notice he ranks in the top 25% or better for weaning weight and yearling weight. We think a lot of this performance-oriented, stout-featured, attractive patterned bull and encourage you to study him sale day.

9 WZRK LAS VEGAS 4032L

01/22/2023 • PUREBRED(89/80.1) • HOMO POLLED (T) • BLACK • NPM2604974 • WZRK 4032L • BULL

Act. BW: 99
Adj. WW: 708
Adj. YW: 1321
Adj. REA: 18.56
Adj. FAT: 0.28
Adj. IMF: 1.915
Adj. SC:

HUNT CREDENTIALS 37C ET
WZRK GAME CHANGER 4015G
WZRK MISS TUFFENUFF 4015B

AHCC RED XPLOSION X615
WZRK BON BON 4032B
WZRK MISS WARDEN 7024T

HUNT TESTAMENT 40T
JKTW WHISKEY RIVER 985 W
ROMN TUFF ENUFF 103T
WZRK MISS MTO 0010X
MAGS UNHEARD OF
HC VELVET 615
DVFC WARDEN 233K
WZRK MISS TUBB 1019L

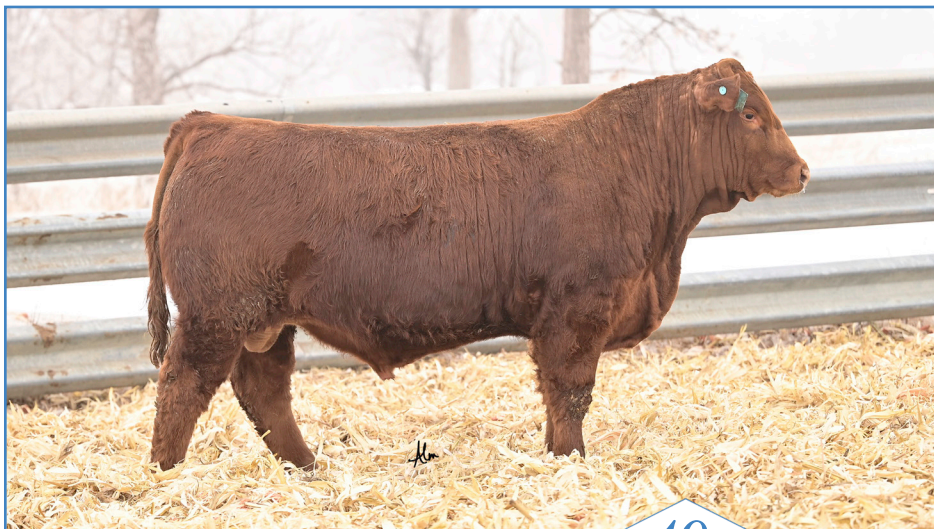
GE-EPDS

WZRK

CED	BW	WW	YW	MK	TM	CEM	SC	DOC	YG	CW	REA	MB	\$MTI
5	1.9	75	115	29	66	4	1.5	23	-0.34	55	1.02	0.15	60.92
95%	65%	15%	15%	15%	10%	80%	3%	1%	90%	1%	65%	15%	10%

Feed Efficiency Data:
ADG 3.83 // Feed/Gain 5.45

Coming to you in a homozygous polled package is this fresh pedigreed, black purebred son of WZRK Game Changer. Visually, he is super long-sided, massive through his rib cage, wide and muscular through his quarter. Numerically, he ranks in the top 15% or better for weaning weight, yearling weight, milk, total maternal, scrotal, disposition, marbling, and \$MTI. Bottom-line is, if you're looking for that bull that combines phenotype, maternal prowess, and numbers in one package, there's little need to look further than WZRK Las Vegas 4032L.



10



11

10

WZRK LIGHT WORK 8017L

01/20/2023 • PUREBRED(100/88.4) • HOMO POLLED (P-2) • RED • NPM2604971 • WZRK 8017L • BULL

Act. BW: 92
Adj. WW: 661
Adj. YW: 1338
Adj. REA: 17.42
Adj. FAT: 0.29
Adj. IMF: 1.705
Adj. SC:

HUNT CREDENTIALS 37C ET
WZRK GAME CHANGER 4015G
WZRK MISS TUFFENUFF 4015B

WZRK COMMANDO 8212C ET
WZRK FANCY 8017F
WZRK MISS WIDELoad 3027A

HUNT TESTAMENT 40T
JKTW WHISKEY RIVER 985 W
ROMN TUFF ENUFF 103T
WZRK MISS MTO 0010X
WULFS APOSTLE T343A
WZRK MISS NASCAR 8012U
BAR JZ WIDELoad 269W
WZRK MISS RAWHIDE 4104P



CED	BW	WW	YW	MK	TM	CEM	SC	DOC	YG	CW	REA	MB	\$MTI
6	2.6	64	102	35	68	4	1.3	16	-0.41	27	0.93	0.11	56.88
90%	80%	55%	40%	1%	5%	80%	4%	15%	70%	40%	80%	15%	25%

Feed Efficiency Data:
ADG 4.23 // Feed/Gain 5.02

Study this homozygous polled, red, Purebred herd bull prospect that boasts a fresh pedigree and the stoutness every cattleman demands. On paper, he presents tremendous weaning weight and yearling weight and ranks high for multiple maternal traits. Don't miss this rugged designed, muscular, good-footed herd sire prospect sale day.

11

WZRK LUNAR ECLIPSE 0024L

02/13/2023 • PERCENTAGE(78/70.2) • HOMO POLLED (T) • BLACK • NXM2605010 • WZRK 0024L • BULL

Act. BW: 92
Adj. WW: 782
Adj. YW: 1405
Adj. REA: 17.2
Adj. FAT: 0.3
Adj. IMF: 1.765
Adj. SC:

MAGS ANCHOR
CJSL DATA BANK 6124D ET
AUTO CARMINDA 6565

HUNT CREDENTIALS 37C ET
WZRK 0024H
WZRK ELAINE 7015E

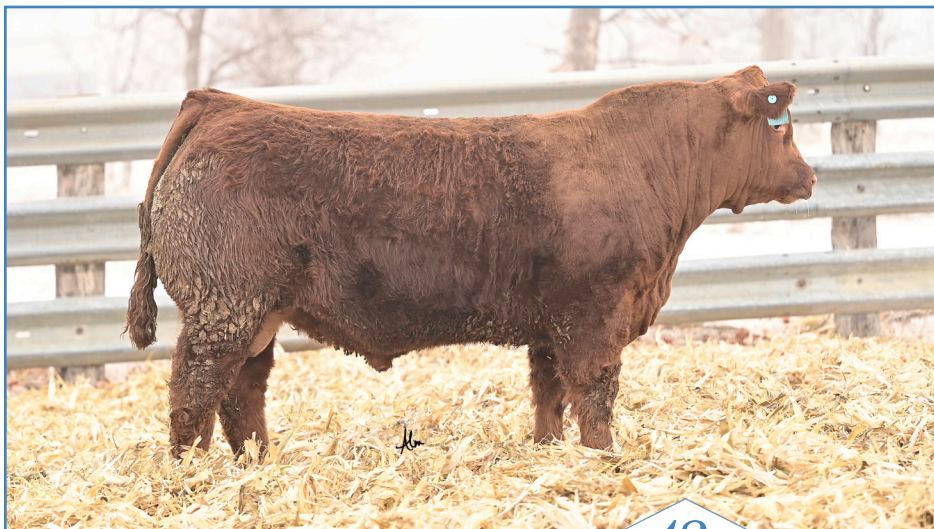
LH WAR HERO 195W
MGS XIPHOPAGOUS
JCL LODESTAR 27L
AUTO CARMINDA 872P
HUNT TESTAMENT 40T
JKTW WHISKEY RIVER 985 W
H2R PROFITBUILDER B403
WZRK BITTERSWEET 4013B



CED	BW	WW	YW	MK	TM	CEM	SC	DOC	YG	CW	REA	MB	\$MTI
10	2.2	75	112	25	63	6	0.8	9	-0.15	35	0.62	0.21	61.64
70%	85%	10%	15%	25%	15%	75%	40%	85%	50%	60%	65%	65%	40%

Feed Efficiency Data:
ADG 3.90 // Feed/Gain 5.86

Here is an attractive made herd sire prospect that combines rib and muscle to the highest degree. To the eye, WZRK Lunar Eclipse 0024L is long-backed, big-bodied, muscular, and easy fleshing. On paper, he is highlighted by more than 782 lbs. of adjusted weaning that ratio'd a 112. This growth could be predicted by a weaning weight figure of 75 which ranks in the top 10% of the entire breed.



12



13

12

WZRK LIGHTFURY 1022L

01/27/2023 • PERCENTAGE(81/73.2) • HOMO POLLED (P-2) • RED • NXM2604986 • WZRK 1022L • BULL

Act. BW: 83
Adj. WW: 691
Adj. YW: 1407
Adj. REA: 16.96
Adj. FAT: 0.49
Adj. IMF: 2.7
Adj. SC:

WULFS XCELLSIOR X252X
WULFS GALLAGHER 7056G
WULFS EDWINNA 7056E

HUNT CREDENTIALS 37C ET
WZRK 1022J

WZRK EMELINA 7031E

WULFS SIRLOIN 3172S
WULFS MISSIVE 2258M
BIEBER DEEP END B597
WULFS CALIBRI 5210C ET
HUNT TESTAMENT 40T
JKTW WHISKEY RIVER 985 W
COLE CANYON 83C
WZRK MS RX 2026Z



CED	BW	WW	YW	MK	TM	CEM	SC	DOC	YG	CW	REA	MB	\$MTI
14	-1.5	73	119	31	67	8	0.88	15	-0.17	38	0.62	0.22	61.74
20%	30%	15%	10%	3%	5%	45%	40%	10%	45%	50%	65%	65%	40%

Feed Efficiency Data:
ADG 4.48 // Feed/Gain 4.70

Rugged phenotype with capacity, growth, and extra muscle expression. Study this bull's well-balanced numerics. Son of Wulfs Gallagher 7056G. This sire has done a tremendous job of transmitting muscle expression and carcass merit. His dam is a Hunt Credentials 37C daughter, a red and Purebred female who has done a great job. On paper, he is a breed leader for weaning weight, yearling weight, milk, total maternal, and scrotal. This homozygous polled herd sire prospect would be a great addition to your herd bull arsenal.

13

WZRK LIBERTY BELL 9040L

02/18/2023 • PUREBRED(93/83.3) • HOMO POLLED (P-2) • HET BLACK (T) • NPM2605023 • WZRK 9040L • BULL

Act. BW: 94
Adj. WW: 710
Adj. YW: 1382
Adj. REA: 18.5
Adj. FAT: 0.45
Adj. IMF: 2.81
Adj. SC:

CELL ENVISION 7023E
CELL HISTORY BUFF 0245H ET
CELL MISS RESPONDER 6078D

L7 EVERLAST 7007E
WZRK 9040G

WZRK ETTA 7061E



CED	BW	WW	YW	MK	TM	CEM	SC	DOC	YG	CW	REA	MB	\$MTI
9	2.3	85	138	23	66	5	1.1	14	-0.58	43	1.82	0.07	63.16
60%	75%	2%	1%	65%	10%	65%	10%	45%	15%	5%	1%	25%	5%

Feed Efficiency Data:
ADG 4.20 // Feed/Gain 5.26

Here's one that promises to catch your attention on sale day! WZRK Liberty Bell 9040L is a fresh pedigreed, level-made, sound-structured herd sire prospect that offers obvious growth, performance ribeye, and marbling advantages that promise to translate into your calf crop the way you'd hope. The combination of his phenotype and numbers projects him to be the type of herd bull that produces well-balanced, stout calves year in and year out. Take note that he ranks in the top 1% of the breed for yearling weight and ribeye area!

OUR PROGRAM

WILL

Financing Program - 50% down at the time of purchase, balance due on delivery

All bulls are 100% unconditionally guaranteed

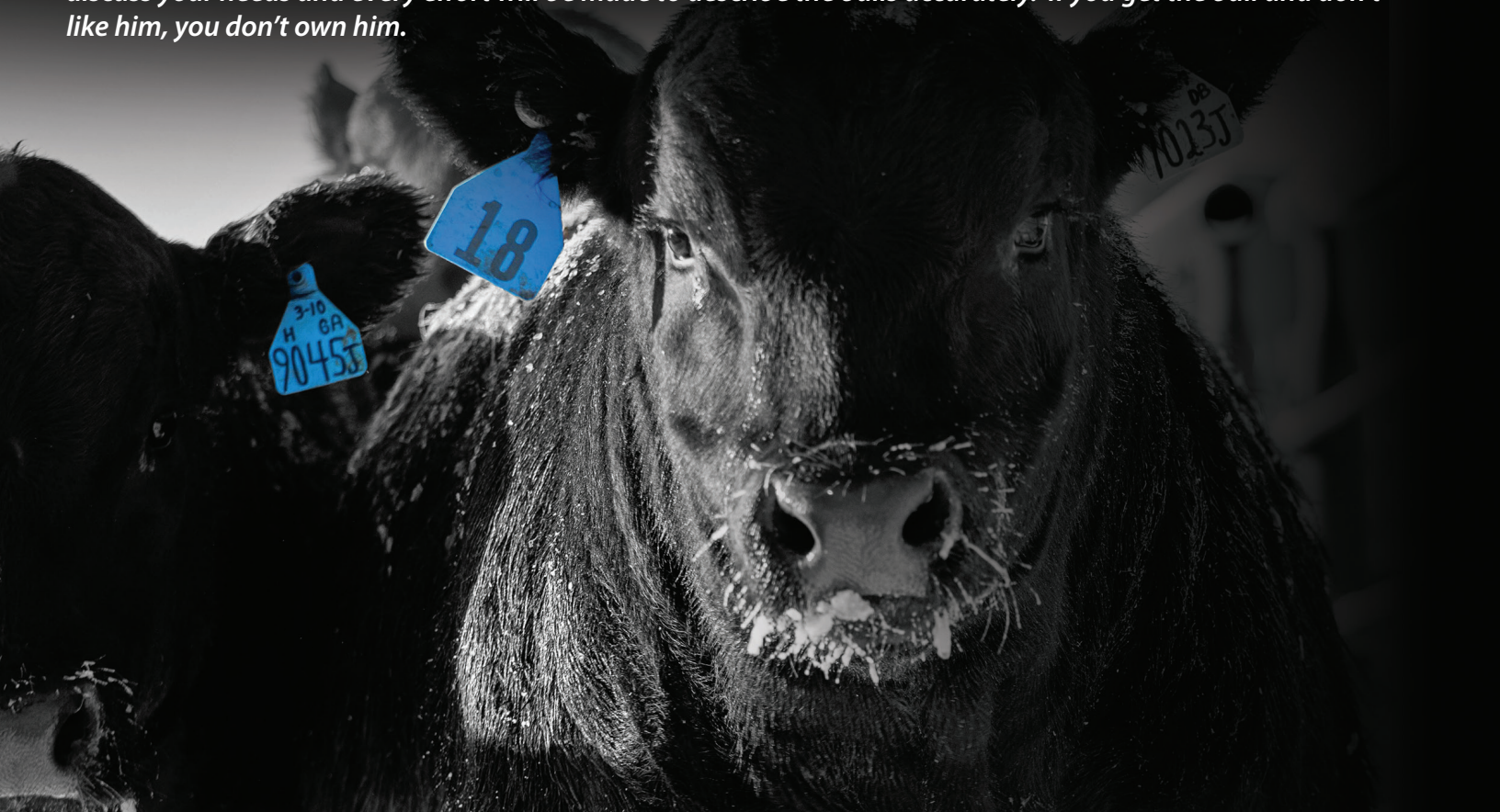
Sight unseen purchase program

Free wintering until April 1, 2024

Free delivery to central points

All bulls will be ultrasounded and carry GE-EPDs by sale day

Sight unseen purchase program - *Contact Wieczorek Limousin direct or any member of the sale staff to discuss your needs and every effort will be made to describe the bulls accurately. If you get the bull and don't like him, you don't own him.*



Improving Selection through NALF Genomic-Enhanced EPDs (GE-EPDs)

Limousin breeders and their commercial customers benefit greatly from new breeding and selection tools. The North American Limousin Foundation (NALF) launched genomic-enhanced EPDs (GE-EPDs) with the fall 2015 international cattle evaluation. This provides GE-EPDs for all Limousin and Lim-Flex animals that have completed DNA testing for genomic profiles.

The information from the genomic data can be as informative as a bull's first calf crop or a cow's lifetime production record. Since genomic data is incorporated directly into the EPDs, cattle producers will not have to learn how to interpret new data.

For more information, visit www.NALF.org or call 303-220-1693.

Major Benefits of GE EPDs

- Risk Reduction through improved accuracies
- Value of time to assess breeding stock at a younger age
- Increased rate of genetic progress
- Getting data on economically important traits, which are expensive or difficult to measure
- Combination of pedigree information, individual performance data, and genomics into one easy to understand number

 **GE-EPDs**
North American Limousin Foundation

WZRK Bulls



14



15

14

WZRK **LIVE IT UP** 8051L

02/08/2023 • PUREBRED(93/83.6) • HET POLLED (T) • RED • NPM2604996 • WZRK 8051L • BULL

Act. BW: 84
Adj. WW: 685
Adj. YW: 1333
Adj. REA: 15.9
Adj. FAT: 0.43
Adj. IMF: 1.82
Adj. SC:

HUNT CREDENTIALS 37C ET
COLE GENESIS 86G
COLE MISS XRATED 354A

WULFS APOSTLE T343A
WZRK FOXY 8051F
WZRK MISS TUFF ENUFF 2064

HUNT TESTAMENT 40T
JKTW WHISKEY RIVER 985 W
MRL X-RATED 014X
COLE MISS PRODUCTION 874U
WULFS YANKEE K689Y
WULFS ULTRA DIAMOND 8571U
ROMN TUFF ENUFF 103T
WZRK MISS GUARDIAN 9041J

GE-EPDs

CED	BW	WW	YW	MK	TM	CEM	SC	DOC	YG	CW	REA	MB	\$MTI
16	0.2	71	112	32	68	11	0.7	14	-0.23	38	0.83	0.19	60.35
10%	35%	30%	20%	5%	5%	2%	30%	45%	>95%	10%	90%	10%	10%

Feed Efficiency Data:
ADG 4.05 // Feed/Gain 5.06

Purebred alert! Well-balanced, is the term that best describes this fresh pedigreed son of COLE Genesis 86G out of a go-to type cow out of Wulfs Apostle T343A. Phenotypically, he is flat-shouldered, level down his top, thick-ended, and long-sided. On paper, he holds staggering growth and maternal advantages. We think this polled, red-hided herd bull prospect does a lot right and is one to seek out on sale day.

15

WZRK **LOMBARDI TROPHY** 9073L

03/07/2023 • PERCENTAGE(85/75.1) • HET POLLED (T) • HOMO BLACK (T) • NXM2605048 • WZRK 9073L • BULL

Act. BW: 92
Adj. WW: 692
Adj. YW: 1389
Adj. REA: 15.04
Adj. FAT: 0.42
Adj. IMF: 2.475
Adj. SC:

AHCC BARN BURNER B907
CELL ENVISION 7023E
PBRS ZSA ZSA 246Z

CJSL DATA BANK 6124D ET
WZRK 9073G
WZRK DAYTIME 6036D

GE-EPDs

CED	BW	WW	YW	MK	TM	CEM	SC	DOC	YG	CW	REA	MB	\$MTI
12	-0.4	73	117	17	53	8	1.3	18	-0.24	48	1.03	0.01	54.52
45%	45%	15%	10%	95%	45%	45%	10%	1%	30%	25%	20%	90%	75%

Feed Efficiency Data:
ADG 4.36 // Feed/Gain 5.06

Calling all cattlemen - if moderate birth, heavy weight calves are what trips your trigger take a look at this homozygous black, big-middled, rugged designed, lunker sale day. EPD-wise, he's an absolute curve bender! Note, that he posts a user-friendly birth weight EPD of -0.4 and staggering weaning and yearling figures that place him in the top 15% of the entire breed. There's little question that next fall his calves will be in high demand.

WZRK Bulls



16



17

16

WZRK **LAW & ORDER** 7015L

03/05/2023 • LIM-FLEX(75/67.2) • HOMO POLLED (P-3) • RED • LFM2605038 • WZRK 7015L • BULL

Act. BW: 99
Adj. WW: 801
Adj. YW: 1419
Adj. REA: 15.4
Adj. FAT: 0.46
Adj. IMF: 3.185
Adj. SC:

GE-EPDs

HUNT CREDENTIALS 37C ET
WZRK GAME CHANGER 4015G
WZRK MISS TUFFENUFF 4015B

H2R PROFITBUILDER B403
WZRK ELAINE 7015E
WZRK BITTERSWEET 4013B

HUNT TESTAMENT 40T
JKTW WHISKEY RIVER 985 W
ROMN TUFF ENUFF 103T
WZRK MISS MTO 0010X
LSF TAKEOVER 9943W
BROWN MS P707 Y6674
WZRK PRIME CUT 8012Y
WZRK MISS RAWHIDE 8055U

CED	BW	WW	YW	MK	TM	CEM	SC	DOC	YG	CW	REA	MB	\$MTI
8	1.1	81	125	31	71	5	1.65	10	-0.28	50	1.02	0.29	67.26
85%	50%	15%	20%	10%	10%	70%	4%	90%	20%	10%	10%	50%	30%

Feed Efficiency Data:
ADG 3.87 // Feed/Gain 5.24

Take note of this well-balanced individual that comes to you in a heavily muscled, red-hided, homozygous polled package. He is a highly usable and versatile WZRK Game Changer 4015G son, the top-selling bull in our 2020 sale selling to Coleman Limousin. His dam is sired by H2R Profitbuilder B403. WZRK Law & Order 7015L is well-balanced numerically. Ranking high for growth and maternal traits as well as ranking high for carcass traits. The earning potential is all here, and we're excited to offer a bull of this nature and proven lineage. Red-hided and homozygous polled, we think WZRK Law & Order 7015L does a lot right.

17

WZRK **LET IT RIDE** 0063L

02/15/2023 • PUREBRED(87/77.9) • HOMO POLLED (P-2) • BLACK • NPM2605019 • WZRK 0063L • BULL

Act. BW: 95
Adj. WW: 736
Adj. YW: 1394
Adj. REA: 16.14
Adj. FAT: 0.46
Adj. IMF: 2.595
Adj. SC:

GE-EPDs

HUNT CREDENTIALS 37C ET
COLE GENESIS 86G
COLE MISS XRATED 354A

COLE CANYON 83C
WZRK 0063H
WZRK DIXIE CUP 6030D

HUNT TESTAMENT 40T
JKTW WHISKEY RIVER 985 W
MRL X-RATED 014X
COLE MISS PRODUCTION 874U
COLE ZONE 89Z
COLE MISS PRODUCTION 103Y
WULFS APOSTLE T343A
WZRK MISS XPLAINTHIS 3019

CED	BW	WW	YW	MK	TM	CEM	SC	DOC	YG	CW	REA	MB	\$MTI
14	0.8	70	113	34	68	9	0.7	7	-0.18	39	0.72	0.17	59.11
15%	45%	30%	20%	2%	5%	15%	30%	90%	>95%	10%	95%	10%	15%

Feed Efficiency Data:
ADG 4.11 // Feed/Gain 5.54

This bull is an absolute stand-out in the offering. Heavily muscled, rugged designed, big-bodied, and sound on the move. He is sired by the popular COLE Genesis 86G, a black Purebred that was on everybody's radar when he sold. This lot's dam is a maternal patterned COLE Canyon 83C daughter. On paper, he ranks in the top 30% for weaning weight and the top 20% for yearling weight paired with high rankings in numerous industry-relevant traits. He has everything completely stacked in his favor.

WZRK

Coming 2-Year Old Bulls

WIECZOREK LIMOUSIN Extra-Age Bull Program

We are proud of this small sub-group of our sale offering. Offered on the 23rd is a stout set of well-developed coming 2-year-old bulls for your appreciated appraisal. Rest assured, these are not the "leftovers" or the "picked-throughs." They were bulls too young to sell last spring. Note, these older bulls represent many of the same cow families and sire groups as our spring bulls. We developed these bulls with longevity in mind and as such, feel comfortable that they will hold up under tough conditions while providing years of trouble-free service. Furthermore, they may just be the strongest and most powerful set of aged bulls we have ever offered, and we hope you agree. As always, we welcome your questions and concerns, and should a problem arise when you get your bulls home, we hope we will be the first call you make.

18

WZRK KNOX 7015K

03/04/2022 - LIM-FLEX(75/66.8) - HOMO POLLED (P-3) - RED - LFM2520737 - WZRK 7015K - BULL

Act. BW: 103
Adj. WW: 700
Adj. YW: 1302
Adj. REA: 17.52
Adj. FAT: 0.37
Adj. IMF: 1.97
Adj. SC: 35.2

HUNT CREDENTIALS 37C ET
WZRK GALAHAD 9216G ET
WZRK MISS TUFFENUFF 3018A

HUNT TESTAMENT 40T
JKTW WHISKEY RIVER 985 W
ROMN TUFF ENUFF 103T
WZRK MISS NASCAR 1064Y
LSF TAKEOVER 9943W
BROWN MS P707 Y6674
WZRK PRIME CUT 8012Y
WZRK MISS RAWHIDE 8055U

H2R PROFITBUILDER B403
WZRK ELAINE 7015E
WZRK BITTERSWEET 4013B

GE-EPDs

CED	BW	WW	YW	MK	TM	CEM	SC	DOC	YG	CW	REA	MB	\$MTI
4	0.4	56	86	31	58	2	0.8	5	-0.4	23	0.98	0.13	54.94
>95%	35%	95%	95%	10%	65%	>95%	60%	>95%	10%	90%	15%	80%	90%

Feed Efficiency Data:
ADG 3.76 // Feed/Gain 4.24

19

WZRK KAMIKAZE 8041K

02/16/2022 - PUREBRED(100/89.4) - HOMO POLLED (P-2) - RED - NPM2520711 - WZRK 8041K - BULL

Act. BW: 96
Adj. WW: 679
Adj. YW: 1272
Adj. REA: 14.9
Adj. FAT: 0.27
Adj. IMF: 2.02
Adj. SC: 37.8

HUNT CREDENTIALS 37C ET
WZRK GALAHAD 9216G ET
WZRK MISS TUFFENUFF 3018A

HUNT TESTAMENT 40T
JKTW WHISKEY RIVER 985 W
ROMN TUFF ENUFF 103T
WZRK MISS NASCAR 1064Y
WULFS XTRACTOR X233X
WZRK MISS WIDELOAD 2065Z
RAWHIDE 740L
WZRK MISS KUDOS 5033R

WZRK CORNERSTONE 2065C
WZRK FLICKA 8041F ET
WZRK MISS RAWHIDE 8055U

GE-EPDs

CED	BW	WW	YW	MK	TM	CEM	SC	DOC	YG	CW	REA	MB	\$MTI
5	2.7	60	86	31	61	3	1	17	-0.49	23	0.96	0.02	52.93
95%	80%	70%	75%	10%	30%	90%	10%	10%	40%	55%	75%	35%	50%

Feed Efficiency Data:
ADG 3.71 // Feed/Gain 5.24

20

WZRK KNOW IT ALL 8061K

02/19/2022 - PUREBRED(93/84.1) - HOMO POLLED (T) - RED - NPM2520718 - WZRK 8061K - BULL

Act. BW: 87
Adj. WW: 689
Adj. YW: 1324
Adj. REA: 17.96
Adj. FAT: 0.29
Adj. IMF: 2.175
Adj. SC: 34.5

WULFS XCELLSIOR X252X
L7 EVERLAST 7007E
MISS L7 934W

WULFS SIRLOIN 3172S
WULFS MISSIVE 2258M
LVLS SECRET WEAPON 4408K
MISS L7 009K
COLE ZONE 89Z
COLE MISS PRODUCTION 103Y
MAGS THE GENERAL
WZRK MISS LINEBACKER 602Z

COLE CANYON 83C
WZRK FRANNIE 8061F
WZRK MISS GENERAL 0074X

GE-EPDs

CED	BW	WW	YW	MK	TM	CEM	SC	DOC	YG	CW	REA	MB	\$MTI
14	-1.6	58	82	26	55	7	0	6	-0.61	23	1.46	0.12	56.87
15%	10%	75%	80%	35%	60%	35%	95%	95%	10%	55%	3%	15%	25%

Feed Efficiency Data:
ADG 3.97 // Feed/Gain 4.76

21

WZRK KOSMO 3054K

03/08/2022 - PUREBRED(89/80.7) - HOMO POLLED (T) - RED - NPM2520749 - WZRK 3054K - BULL

Act. BW: 103
Adj. WW: 665
Adj. YW: 1258
Adj. REA: 14.4
Adj. FAT: 0.45
Adj. IMF: 2.88
Adj. SC: 35

HUNT CREDENTIALS 37C ET
WZRK GALAHAD 9216G ET
WZRK MISS TUFFENUFF 3018A

HUNT TESTAMENT 40T
JKTW WHISKEY RIVER 985 W
ROMN TUFF ENUFF 103T
WZRK MISS NASCAR 1064Y
MAGS UNHEARD OF
HC VELVET 615
FAIR HAVEN 540K
WZRK 7032G

AHCC RED XPLOSION X615
WZRK MISS RX 3054A
WZRK MISS KENWORTH 4048P

GE-EPDs

CED	BW	WW	YW	MK	TM	CEM	SC	DOC	YG	CW	REA	MB	\$MTI
5	1.9	54	91	29	56	3	0.6	13	-0.23	28	0.54	0.2	55.61
95%	65%	85%	65%	15%	55%	90%	40%	60%	>95%	35%	>95%	10%	30%

Feed Efficiency Data:
ADG 3.71 // Feed/Gain 4.65

22

WZRK KING TUT 9073K

04/01/2022 - PERCENTAGE(85/75.8) - HOMO POLLED (T) - HET BLACK (T) - NXM2520770 - WZRK 9073K - BULL

Act. BW: 82
Adj. WW: 710
Adj. YW: 1251
Adj. REA: 15.78
Adj. FAT: 0.4
Adj. IMF: 2.67
Adj. SC: 37.1

CELL ENVISION 7023E
CELL HISTORY BUFF 0245H ET
CELL MISS RESPONDER 6078D

AHCC BARN BURNER B907
PBRS ZSA ZSA 246Z
COLE ABSOLUTE 05A
MAGS YODH
MAGS ANCHOR
AUTO CARMINDA 656S
HUNT ATOMIC 17A
WZRK MISS TUFFENUFF 3018A

CJSL DATA BANK 6124D ET
WZRK 9073G
WZRK DAYTIME 6036D

GE-EPDs

CED	BW	WW	YW	MK	TM	CEM	SC	DOC	YG	CW	REA	MB	\$MTI
11	1.6	76	121	20	58	7	1.1	11	-0.3	39	1.01	0.25	64.65
55%	75%	10%	10%	75%	25%	60%	20%	50%	25%	45%	20%	60%	30%

Feed Efficiency Data:
ADG 3.38 // Feed/Gain 5.28

23

WZRK KLAMATH FALLS 8054K

03/24/2022 - PUREBRED(93/81.6) - HOMO POLLED (P-2) - BLACK - NPM2520765 - WZRK 8054K - BULL

Act. BW: 85
Adj. WW: 708
Adj. YW: 1230
Adj. REA: 16.62
Adj. FAT: 0.35
Adj. IMF: 2.57
Adj. SC: 37.3

CELL ENVISION 7023E
CELL HISTORY BUFF 0245H ET
CELL MISS RESPONDER 6078D

AHCC BARN BURNER B907
PBRS ZSA ZSA 246Z
COLE ABSOLUTE 05A
MAGS YODH
WULFS XTRACTOR X233X
WZRK MISS NASCAR 8012U
BAR JZ WIDELOAD 269W
WZRK MISS RANGERRIDER 7018

WZRK ATLAS 8012A
WZRK FUCHSIA 8054F
WZRK MISS WIDELOAD 2068Z

GE-EPDs

CED	BW	WW	YW	MK	TM	CEM	SC	DOC	YG	CW	REA	MB	\$MTI
8	-0.6	65	96	20	52	4	1.2	16	-0.46	31	1.27	0.11	57.25
70%	20%	50%	55%	90%	75%	80%	10%	15%	55%	25%	15%	15%	20%

Feed Efficiency Data:
ADG 3.26 // Feed/Gain 6.29

Black Yearling Bulls

24

WZRKLAVA ROCKS1063L

02/10/2023 - PERCENTAGE(82/71.6) - HET POLLED (T) - HOMO BLACK (T) - NXM2605000 - WZRK 1063L - BULL

Act. BW: 88
Adj. WW: 704
Adj. YW: 1244
Adj. REA: 15.44
Adj. FAT: 0.35
Adj. IMF: 2.14
Adj. SC:

MAGS FAULTLESS 154F
CHR HARD ROCKS 151H
CHR CRICKET 161C

ROMN TUFF ENUFF 103T
WZRK MISS TUFFENUFF 1063Y
WZRK MISS RANGERIDER 7018

TMCK CASH FLOW 247C
MAGS ANDRIA
MAGS EAGLE
AUTO SPITZ 289Z
WULFS RANSOM 3059R
ROMN ROBERTA 35R
WULFS RANGE RIDER 2056R
WZRK MISS TUBB 1004L

GE-EPDS

CED	BW	WW	YW	MK	TM	CEM	SC	DOC	YG	CW	REA	MB	\$MTI
15	-1.7	78	119	21	60	8	0.65	8	-0.29	30	0.94	0.21	63.8
15%	25%	10%	10%	65%	20%	45%	65%	95%	25%	70%	25%	65%	30%

Feed Efficiency Data:
ADG 3.37 // Feed/Gain 5.43

25

WZRKLISTEN UP5017L

02/10/2023 - PERCENTAGE(78/70.6) - HET POLLED (T) - HET BLACK (T) - NXM2605001 - WZRK 5017L - BULL

Act. BW: 105
Adj. WW: 725
Adj. YW: 1402
Adj. REA: 18.54
Adj. FAT: 0.39
Adj. IMF: 1.91
Adj. SC:

MAGS CABLE
LFL ESQUIRE 7084E ET
AUTO BLISS 265Y

WULFS XTRACTOR X233X
WZRK MISS XTRACTOR 5017C
WZRK MS RANGE RIDER 2019Z

MAGS APLESEED
MAGS ZEQUIN
LH U HAUL 135U
WLR UGLY BETTY 432U
WULFS TITUS 2149T
WULFS MYRENE 2332M
WULFS RANGE RIDER 2056R
WZRK MISS FORTUNE COOKIE

GE-EPDS

CED	BW	WW	YW	MK	TM	CEM	SC	DOC	YG	CW	REA	MB	\$MTI
7	3	88	139	20	64	4	0.7	12	-0.37	38	1.02	-0.06	57.62
95%	95%	1%	2%	75%	10%	95%	50%	30%	20%	50%	20%	95%	60%

Feed Efficiency Data:
ADG 4.23 // Feed/Gain 5.49

26

WZRKLIFELINE8061L

02/15/2023 - PUREBRED(87/77.7) - HOMO POLLED (T) - HOMO BLACK (T) - NPM2605017 - WZRK 8061L - BULL

Act. BW: 75
Adj. WW: 642
Adj. YW: 1192
Adj. REA: 16.64
Adj. FAT: 0.31
Adj. IMF: 3.045
Adj. SC:

CELL ENVISION 7023E
CELL HISTORY BUFF 0245H ET
CELL MISS RESPONDER 6078D

COLE CANYON 83C
WZRK FRANNIE 8061F
WZRK MISS GENERAL 0074X

AHCC BARN BURNER B907
PBRS ZSA ZSA 246Z
COLE ABSOLUTE 05A
MAGS YODH
COLE ZONE 89Z
COLE MISS PRODUCTION 103Y
MAGS THE GENERAL
WZRK MISS LINEBACKER 602Z

GE-EPDS

CED	BW	WW	YW	MK	TM	CEM	SC	DOC	YG	CW	REA	MB	\$MTI
11	-0.9	72	110	22	58	6	1.15	12	-0.36	48	1.31	0.23	63.12
40%	15%	25%	20%	75%	45%	50%	10%	70%	85%	2%	10%	5%	5%

Feed Efficiency Data:
ADG 3.44 // Feed/Gain 5.62

27

WZRKLEGACY8012L

02/15/2023 - LIM-FLEX(75/65.4) - HOMO POLLED (P-1) - HET BLACK (T) - LFM2608904 - WZRK 8012L - BULL

Act. BW: 97
Adj. WW: 645
Adj. YW: 1283
Adj. REA: 19.54
Adj. FAT: 0.23
Adj. IMF: 1.615
Adj. SC:

HUNT BILLY RAY 80B
DANH DURHAM 54D
DANH ALTO 35A

WULFS NASCAR G949N
WZRK MISS NASCAR 8012U
WZRK MISS F LINER 1021L

A A R GAME DAY 903
HUNT MISS WULFHUNT 33U
S A V BISMARCK 5682
DANH YOU BET 92Y
WULFS KLINT 5874K
GFLI GORDON LADY 949J
WULFS FREIGHTLINER 3597F
MISS MERVA 047X AD

GE-EPDS

CED	BW	WW	YW	MK	TM	CEM	SC	DOC	YG	CW	REA	MB	\$MTI
10	1.5	67	107	22	56	6	0.45	15	-0.47	22	1.12	-0.01	53.94
55%	65%	60%	60%	80%	75%	50%	95%	20%	2%	90%	5%	>95%	90%

Feed Efficiency Data:
ADG 3.99 // Feed/Gain 5.69

28

WZRKLOOKER3018L

01/27/2023 - PUREBRED(93/82) - HOMO POLLED (T) - BLACK - NPM2604987 - WZRK 3018L - BULL

Act. BW: 87
Adj. WW: 615
Adj. YW: 1238
Adj. REA: 16.66
Adj. FAT: 0.3
Adj. IMF: 2.54
Adj. SC:

CELL ENVISION 7023E
CELL HISTORY BUFF 0245H ET
CELL MISS RESPONDER 6078D

ROMN TUFF ENUFF 103T
WZRK MISS TUFFENUFF 3018A
WZRK MISS NASCAR 1064Y

AHCC BARN BURNER B907
PBRS ZSA ZSA 246Z
COLE ABSOLUTE 05A
MAGS YODH
WULFS RANSOM 3059R
ROMN ROBERTA 35R
WULFS NASCAR G949N
WZRK MISS GALVESTON 1012L

GE-EPDS

CED	BW	WW	YW	MK	TM	CEM	SC	DOC	YG	CW	REA	MB	\$MTI
8	0.3	59	96	24	53	5	1.25	11	-0.41	20	1.05	0.18	57.96
70%	35%	70%	55%	55%	70%	65%	10%	75%	70%	65%	55%	10%	20%

Feed Efficiency Data:
ADG 3.90 // Feed/Gain 5.40

29

WZRKLIONEL RICHIE3009L

01/25/2023 - PUREBRED(91/81.1) - HOMO POLLED (P-1) - HET BLACK (T) - NPM2604983 - WZRK 3009L - BULL

Act. BW: 93
Adj. WW: 660
Adj. YW: 1254
Adj. REA: 15.62
Adj. FAT: 0.24
Adj. IMF: 2.53
Adj. SC:

WULFS GALLAGHER 7056G
WZRK JACK BLACK 9048J
WZRK 9048G

ROMN TUFF ENUFF 103T
WZRK MISS TUFFENUFF 3009A
WZRK MISS NASCAR 1014Y

WULFS XCELLSIOR X252X
WULFS EDWINNA 7056E
CJSL DATA BANK 6124D ET
WZRK MISS XTRACTOR 5044C
WULFS RANSOM 3059R
ROMN ROBERTA 35R
WULFS NASCAR G949N
WZRK MISS GENESIS 7027T

GE-EPDS

CED	BW	WW	YW	MK	TM	CEM	SC	DOC	YG	CW	REA	MB	\$MTI
13	-0.1	66	89	23	56	8	0.4	18	-0.37	26	0.88	0.15	58.32
25%	30%	45%	70%	65%	55%	25%	70%	3%	80%	45%	85%	15%	15%

Feed Efficiency Data:
ADG 3.71 // Feed/Gain 5.78

Can't make it to the sale?

NO PROBLEM.

DVAuction
Broadcasting Real-Time Auctions



WZRK

Red Yearling Bulls

WIECZOREK LIMOUSIN

Invest In The Wieczorek Program

Financing Program - 50% down at the time of purchase, balance due on delivery.

Free wintering until April 1, 2024.

All bulls are 100% unconditionally guaranteed.

Free delivery to central points.

Sight unseen purchase program.

All bulls will be ultra-sounded and carry GE-EPDs,

Sight unseen purchase program - Contact Wieczorek Limousin direct or any member of the sale staff to discuss your needs and every effort will be made to describe the bulls accurately. If you get the bull and don't like him, you don't own him.

30

WZRK LEAD THE WAY 8204L

01/21/2023 • PUREBRED(91/80.9) • HOMO POLLED (P-3) • RED • NPM2604972 • WZRK 8204L • BULL

Act. BW: 108
Adj. WW: 718
Adj. YW: 1479
Adj. REA: 16.74
Adj. FAT: 0.43
Adj. IMF: 2.3
Adj. SC:

HUNT CREDENTIALS 37C ET
WZRK GAME CHANGER 4015G
WZRK MISS TUFFENUFF 4015B

HUNT TESTAMENT 40T
JKTW WHISKEY RIVER 985 W
ROMN TUFF ENUFF 103T
WZRK MISS MTO 0010X
ROMN TUFF ENUFF 103T
COLE MISS XRATED 354A
AHCC RED XPLOSION X615
WZRK MISS NASCAR 8012U

COLE CADILLAC 05C
WZRK 8204F ET
WZRK BREATHLESS 4007B

GE-EPDs

CED	BW	WW	YW	MK	TM	CEM	SC	DOC	YG	CW	REA	MB	\$MTI
7	2.2	77	123	31	70	4	0.97	15	-0.36	57	1.2	0.23	64.75
80%	70%	10%	10%	10%	3%	80%	15%	20%	85%	1%	25%	5%	3%

Feed Efficiency Data:
ADG 4.75 // Feed/Gain 5.10

31

WZRK LAPUA 5070L

02/15/2023 • PUREBRED(93/83.1) • HOMO POLLED (P-1) • RED • NPM2605016 • WZRK 5070L • BULL

Act. BW: 103
Adj. WW: 698
Adj. YW: 1400
Adj. REA: 16.74
Adj. FAT: 0.21
Adj. IMF: 1.855
Adj. SC:

WULFS BILLY THE KID K234B
WULFS EISENHOWER 3616E
WULFS ABRIL 3616A

RUNL STETSON 8505
WULFS UNIQUE 8217U
WULFS X SIGN HERE X578X
WULFS MYRENE 2332M
WZRK PRIMESTAR 861P
WZRK MISS NASCAR 8012U
WULFS NOBEL PRIZE 3861N
WZRK MISS KABOOM 3031N

WZRK PRIME CUT 8012Y
WZRK CANT TOUCH THIS 5070C ET
WZRK MISS NOBEL PRIZE 6027

GE-EPDs

CED	BW	WW	YW	MK	TM	CEM	SC	DOC	YG	CW	REA	MB	\$MTI
9	4.5	72	115	30	66	6	0.75	18	-0.36	31	0.86	0.15	60.39
60%	>95%	25%	15%	15%	10%	50%	30%	3%	85%	25%	85%	15%	10%

Feed Efficiency Data:
ADG 4.39 // Feed/Gain 5.54

32

WZRK LOCKSTEP 8203L

01/19/2023 • LIM-FLEX(75/62.2) • HOMO POLLED (P-2) • RED • LFM2604966 • WZRK 8203L • BULL

Act. BW: 85
Adj. WW: 687
Adj. YW: 1295
Adj. REA: 16.7
Adj. FAT: 0.33
Adj. IMF: 2.17
Adj. SC:

CELL ENVISION 7023E
WZRK JUGGERNAUT 4009J
WZRK MISS TFFENUFF 4009B

AHCC BARN BURNER B907
PBRS ZSA ZSA 246Z
ROMN TUFF ENUFF 103T
WZRK MISS WIDELoad 2068Z
LSF TAKEOVER 9943W
BROWN MS P707 Y6674
WULFS NASCAR G949N
WZRK MISS F LINER 1021L

H2R PROFITBUILDER B403
WZRK 8203F ET
WZRK MISS NASCAR 8012U

GE-EPDs

CED	BW	WW	YW	MK	TM	CEM	SC	DOC	YG	CW	REA	MB	\$MTI
12	0.1	76	116	25	63	6	1.55	18	-0.36	24	0.94	0.2	63.32
30%	30%	25%	40%	50%	35%	50%	5%	3%	10%	85%	15%	65%	50%

Feed Efficiency Data:
ADG 3.80 // Feed/Gain 6.30

33

WZRK LOW-RISK 1017L

01/27/2023 • PUREBRED(87/78.4) • HOMO POLLED (P-1) • RED • NPM2604984 • WZRK 1017L • BULL

Act. BW: 68
Adj. WW: 595
Adj. YW: 1203
Adj. REA: 15.16
Adj. FAT: 0.38
Adj. IMF: 2.54
Adj. SC:

WULFS XCELLSIOR X252X
WULFS GALLAGHER 7056G
WULFS EDWINNA 7056E

WULFS SIRLOIN 3172S
WULFS MISSIVE 2258M
BIEBER DEEP END B597
WULFS CALIBRI 5210C ET
HUNT CREDENTIALS 37C ET
WZRK MISS TUFFENUFF 4015B
WULFS APOSTLE T343A
WZRK MISS COWBOY 1023Y

WZRK GAME CHANGER 4015G
WZRK 1017J
WZRK MISS APOSTLE 5051C

GE-EPDs

CED	BW	WW	YW	MK	TM	CEM	SC	DOC	YG	CW	REA	MB	\$MTI
15	-2.2	55	82	28	56	8	1.05	16	-0.13	39	0.57	0.35	60.5
10%	5%	85%	80%	20%	55%	25%	10%	15%	>95%	10%	>95%	2%	10%

Feed Efficiency Data:
ADG 3.80 // Feed/Gain 5.48

34

WZRK LIFE SAVER 1019L

01/28/2023 • PERCENTAGE(77/69.3) • HOMO POLLED (T) • RED • NXM2604989 • WZRK 1019L • BULL

Act. BW: 79
Adj. WW: 638
Adj. YW: 1202
Adj. REA: 14.08
Adj. FAT: 0.34
Adj. IMF: 1.985
Adj. SC:

WULFS XCELLSIOR X252X
WULFS GALLAGHER 7056G
WULFS EDWINNA 7056E

WULFS SIRLOIN 3172S
WULFS MISSIVE 2258M
BIEBER DEEP END B597
WULFS CALIBRI 5210C ET
MAGS ANCHOR
AUTO CARMINDA 6565
AHCC RED XPLOSION X615
WZRK MISS RAWHIDE 4107P

CJSL DATA BANK 6124D ET
WZRK 1019J
WZRK MS RX 2015Z

GE-EPDs

CED	BW	WW	YW	MK	TM	CEM	SC	DOC	YG	CW	REA	MB	\$MTI
13	0.7	74	116	23	60	6	0.68	12	-0.23	33	0.67	0.07	56.97
30%	60%	15%	15%	45%	20%	75%	65%	30%	35%	65%	55%	85%	65%

Feed Efficiency Data:
ADG 3.53 // Feed/Gain 5.29

35

WZRK LUNCH BREAK 8063L

02/14/2023 • PUREBRED(87/77.6) • DOUBLE POLLED • RED • NPM2605012 • WZRK 8063L • BULL

Act. BW: 88
Adj. WW: 627
Adj. YW: 1216
Adj. REA: 15.62
Adj. FAT: 0.4
Adj. IMF: 2.08
Adj. SC:

HUNT CREDENTIALS 37C ET
WZRK GAME CHANGER 4015G
WZRK MISS TUFFENUFF 4015B

HUNT TESTAMENT 40T
JKTW WHISKEY RIVER 985 W
ROMN TUFF ENUFF 103T
WZRK MISS MTO 0010X
LSF SAGA 1040Y
AHCC DAKOTA LUVLY R595
WULFS NASCAR G949N
WZRK MISS STETSON 9042J

AHCC COWBOY KIND C595 ET
WZRK FRANCINE 8063F
WZRK MISS NASCAR 9043W

GE-EPDs

CED	BW	WW	YW	MK	TM	CEM	SC	DOC	YG	CW	REA	MB	\$MTI
12	0.6	66	97	34	67	7	1.65	16	-0.17	37	0.68	0.38	65.06
30%	40%	45%	50%	2%	10%	35%	2%	15%	>95%	15%	>95%	2%	3%

Feed Efficiency Data:
ADG 3.68 // Feed/Gain 5.96

Black Yearling Bulls

36

WZRKLION'S SHARE5042L

02/17/2023 • PUREBRED(93/84) • HOMO POLLED (P-2) • HET BLACK (T) • NPM2605022 • WZRK 5042L • BULL

Act. BW: 103
Adj. WW: 716
Adj. YW: 1388
Adj. REA: 16.78
Adj. FAT: 0.35
Adj. IMF: 2.505
Adj. SC:

CELL ENVISION 7023E
CELL HISTORY BUFF 0245H ET
CELL MISS RESPONDER 6078D

AHCC BARN BURNER B907
PBRS ZSA ZSA 246Z
COLE ABSOLUTE 05A
MAGS YODH
WZRK PRIMESTAR 861P
WULFS MISSIVE 2258M
ROMN TUFF ENUFF 103T
WZRK MISS H SHADOW 0042K

WULFS XCLUSIVE 2458X
WZRK CHOCOLATE CHIP 5042C
WZRK MISS TUFFENUFF 1061Y

GE-EPDs

CED	BW	WW	YW	MK	TM	CEM	SC	DOC	YG	CW	REA	MB	\$MTI
8	3.3	81	134	16	57	4	1.1	14	-0.36	47	1.24	0.23	66.18
70%	90%	5%	2%	>95%	50%	80%	10%	45%	85%	2%	20%	5%	2%

Feed Efficiency Data:
ADG 4.20 // Feed/Gain 5.94

37

WZRKLANDMARK8211L

02/09/2023 • LIM-FLEX(68/60.6) • HOMO POLLED (P-2) • DOUBLE BLACK • LFM2604999 • WZRK 8211L • BULL

Act. BW: 103
Adj. WW: 696
Adj. YW: 1339
Adj. REA: 17.62
Adj. FAT: 0.23
Adj. IMF: 2.135
Adj. SC:

WULFS BILLY THE KID K234B
WULFS EISENHOWER 3616E
WULFS ABRIL 3616A

RUNL STETSON 850S
WULFS UNIQUE 8217U
WULFS X SIGN HERE X578X
WULFS MYRENE 2332M
LSF TAKEOVER 9943W
BROWN MS P707 Y6674
WULFS NASCAR G949N
WZRK MISS F LINER 1021L

HZR PROFITBUILDER B403
WZRK 8211F ET
WZRK MISS NASCAR 8012U

GE-EPDs

CED	BW	WW	YW	MK	TM	CEM	SC	DOC	YG	CW	REA	MB	\$MTI
8	3.3	78	126	32	71	5	1.65	16	-0.28	39	0.88	0.12	60.42
85%	95%	20%	20%	5%	10%	70%	4%	15%	20%	40%	25%	85%	65%

Feed Efficiency Data:
ADG 4.02 // Feed/Gain 4.84

38

WZRKLOCK DOWN7030L

03/13/2023 • PERCENTAGE(83/74.6) • HOMO POLLED (P-2) • HOMO BLACK (T) • NXM2605062 • WZRK 7030L • BULL

Act. BW: 99
Adj. WW: 688
Adj. YW: 1306
Adj. REA: 17.36
Adj. FAT: 0.54
Adj. IMF: 2.715
Adj. SC:

CELL ENVISION 7023E
CELL HISTORY BUFF 0245H ET
CELL MISS RESPONDER 6078D

AHCC BARN BURNER B907
PBRS ZSA ZSA 246Z
COLE ABSOLUTE 05A
MAGS YODH
MAGS WINSTON
MAGS XTRA REST
WZRK PRIMESTAR 861P
WZRK MISS HOLYFIELD 1034L

MAGS AVIATOR
WZRK ELISE 7030E
WZRK MISS PRIMESTAR 1044Y

GE-EPDs

CED	BW	WW	YW	MK	TM	CEM	SC	DOC	YG	CW	REA	MB	\$MTI
11	1.8	68	112	21	54	6	0.85	13	-0.28	47	1.21	0.22	60.92
55%	80%	25%	15%	65%	40%	75%	40%	25%	25%	30%	10%	65%	45%

Feed Efficiency Data:
ADG 3.87 // Feed/Gain 5.84

39

WZRKLITTLE ROCK1044L

02/19/2023 • PUREBRED(90/80.5) • HOMO POLLED (T) • HET BLACK (T) • NPM2605025 • WZRK 1044L • BULL

Act. BW: 98
Adj. WW: 688
Adj. YW: 1277
Adj. REA: 17.22
Adj. FAT: 0.28
Adj. IMF: 2.165
Adj. SC:

CELL ENVISION 7023E
COLE JACKPOT 38J ET
COLE MISS XRATED 354A

AHCC BARN BURNER B907
PBRS ZSA ZSA 246Z
MRL X-RATED 014X
COLE MISS PRODUCTION 874U
JCL LODESTAR 27L
WZRK MISS P ULTRA 861F
RPLF HOLYFIELD 216H
WZRK 7010G

WZRK PRIMESTAR 861P
WZRK MISS PRIMESTAR 1044Y
WZRK MISS HOLYFIELD 1034L

GE-EPDs

CED	BW	WW	YW	MK	TM	CEM	SC	DOC	YG	CW	REA	MB	\$MTI
9	2.1	67	108	24	58	6	0.65	9	-0.32	34	0.93	0.2	60.31
60%	70%	45%	25%	55%	45%	50%	40%	85%	90%	20%	80%	10%	10%

Feed Efficiency Data:
ADG 3.68 // Feed/Gain 5.05

40

WZRKLEONARDO9010L

02/15/2023 • PERCENTAGE(85/75.1) • HOMO POLLED (P-2) • HOMO BLACK (T) • NXM2605018 • WZRK 9010L • BULL

Act. BW: 84
Adj. WW: 673
Adj. YW: 1169
Adj. REA: 14.14
Adj. FAT: 0.28
Adj. IMF: 2.565
Adj. SC:

CELL ENVISION 7023E
COLE JACKPOT 38J ET
COLE MISS XRATED 354A

AHCC BARN BURNER B907
PBRS ZSA ZSA 246Z
MRL X-RATED 014X
COLE MISS PRODUCTION 874U
MAGS ANCHOR
AUTO CARMINDA 656S
BAR JZ WIDELOAD 269W
WZRK MISS RAWHIDE 4104P

CJSL DATA BANK 6124D ET
WZRK 9010G
WZRK MISS WIDELOAD 3027A

GE-EPDs

CED	BW	WW	YW	MK	TM	CEM	SC	DOC	YG	CW	REA	MB	\$MTI
10	0.3	61	96	25	55	6	0.82	11	-0.31	21	0.62	0.25	60.08
70%	55%	40%	35%	25%	35%	75%	40%	50%	25%	90%	65%	60%	50%

Feed Efficiency Data:
ADG 3.10 // Feed/Gain 4.78

41

WZRKLUCKY1012L

02/28/2023 • PUREBRED(87/75) • HOMO POLLED (P-3) • BLACK • NPM2605032 • WZRK 1012L • BULL

Act. BW: 74
Adj. WW: 630
Adj. YW: 1288
Adj. REA: 15.1
Adj. FAT: 0.41
Adj. IMF: 2.41
Adj. SC:

TNGC EMPIRE 736E
WZRK JAMOCHA 1044J
WZRK MISS PRIMESTAR 1044Y

TMCK CASH FLOW 247C
MAGS BETH ET
WZRK PRIMESTAR 861P
WZRK MISS HOLYFIELD 1034L
WULFS RANSOM 3059R
ROMN ROBERTA 35R
COLE CANYON 83C
WZRK DELISH 6047D

ROMN TUFF ENUFF 103T
WZRK 1012J
WZRK 9062G

GE-EPDs

CED	BW	WW	YW	MK	TM	CEM	SC	DOC	YG	CW	REA	MB	\$MTI
11	-2.2	62	103	23	54	7	0.53	12	-0.29	30	0.7	0.05	53.19
40%	5%	60%	40%	65%	65%	35%	60%	70%	95%	30%	>95%	25%	50%

Feed Efficiency Data:
ADG 4.11 // Feed/Gain 5.16



SMARTFEED

Red Yearling Bulls

42

WZRKLIGHTHOUSE0011L

02/18/2023 • PUREBRED(87/76.9) • HOMO POLLED (T) • RED • NPM2605024 • WZRK 0011L • BULL

Act. BW: 93
Adj. WW: 692
Adj. YW: 1281
Adj. REA: 15.9
Adj. FAT: 0.4
Adj. IMF: 3.34
Adj. SC:

WULFS BILLY THE KID K234B
WULFS EISENHOWER 3616E
WULFS ABRIL 3616A

RUNL STETSON 8505
WULFS UNIQUE 8217U
WULFS X SIGN HERE X578X
WULFS MYRLENE 2332M
WULFS RANSOM 3059R
ROMN ROBERTA 35R
AHCC COWBOY KIND C595 ET
WZRK MISS NASCAR 9043W

ROMN TUFF ENUFF 103T
WZRK 0011H
WZRK FRANCINE 8063F

GE-EPDS

CED	BW	WW	YW	MK	TM	CEM	SC	DOC	YG	CW	REA	MB	\$MTI
12	0.8	73	112	32	69	8	1.15	14	-0.2	46	0.83	0.13	58.52
30%	45%	20%	20%	5%	4%	25%	10%	45%	>95%	3%	90%	15%	15%

Feed Efficiency Data:
ADG 3.68 // Feed/Gain 5.69

43

WZRKLESSON LEARNED8006L

02/19/2023 • PUREBRED(93/82.7) • HET POLLED (T) • RED • NPM2605027 • WZRK 8006L • BULL

Act. BW: 98
Adj. WW: 661
Adj. YW: 1127
Adj. REA: 15.72
Adj. FAT: 0.45
Adj. IMF: 4.325
Adj. SC:

HUNT CREDENTIALS 37C ET
COLE GENESIS 86G
COLE MISS XRATED 354A

HUNT TESTAMENT 40T
JKTW WHISKEY RIVER 985 W
MRL X-RATED 014X
COLE MISS PRODUCTION 874U
WULFS RANSOM 3059R
ROMN ROBERTA 35R
WULFS APOSTLE T343A
WZRK MISS COWBOY 1036Y

ROMN TUFF ENUFF 103T
WZRK FOREVER 8006F
WZRK DONNA 6023D

GE-EPDS

CED	BW	WW	YW	MK	TM	CEM	SC	DOC	YG	CW	REA	MB	\$MTI
11	1.8	73	112	29	65	9	0.6	16	-0.28	24	0.8	0.39	68.57
40%	65%	20%	20%	15%	15%	15%	40%	15%	95%	50%	90%	2%	1%

Feed Efficiency Data:
ADG 2.91 // Feed/Gain 6.45

44

WZRKLESS IS MORE1015L

01/17/2023 • PUREBRED(87/74.4) • HOMO POLLED (P-2) • RED • NPM2604959 • WZRK 1015L • BULL

Act. BW: 65
Adj. WW: 611
Adj. YW: 1033
Adj. REA: 14.96
Adj. FAT: 0.46
Adj. IMF: 3.63
Adj. SC:

WULFS XCELLSIOR X252X
WULFS GALLAGHER 7056G
WULFS EDWINNA 7056E

WULFS SIRLOIN 3172S
WULFS MISSIVE 2258M
BIEBER DEEP END B597
WULFS CALIBRI 5210C ET
WULFS BILLY THE KID K234B
WULFS ABRIL 3616A
ROMN TUFF ENUFF 103T
WZRK MISS NASCAR 8044U

WULFS EISENHOWER 3616E
WZRK 1015J
WZRK MISS TUFFENUFF 4055B

GE-EPDS

CED	BW	WW	YW	MK	TM	CEM	SC	DOC	YG	CW	REA	MB	\$MTI
15	-3.3	58	81	26	55	8	0.78	13	-0.24	12	0.59	0.3	60.38
10%	2%	75%	85%	35%	60%	25%	30%	60%	>95%	90%	>95%	3%	10%

Feed Efficiency Data:
ADG 2.64 // Feed/Gain 6.19

45

WZRKLIVE-WIRE3008L

03/06/2023 • PERCENTAGE(76/70.1) • HET POLLED (T) • RED • NXM2605044 • WZRK 3008L • BULL

Act. BW: 81
Adj. WW: 657
Adj. YW: 1187
Adj. REA: 14.52
Adj. FAT: 0.44
Adj. IMF: 2.57
Adj. SC:

WULFS XCELLSIOR X252X
WULFS GALLAGHER 7056G
WULFS EDWINNA 7056E

WULFS SIRLOIN 3172S
WULFS MISSIVE 2258M
BIEBER DEEP END B597
WULFS CALIBRI 5210C ET
MAGS UNHEARD OF
HC VELVET 615
WZRK GENESIS 532E
WZRK MISS STETSON 0036K

AHCC RED XPLOSION X615
WZRK MISS RX 3008A
WZRK MISS GENESIS 7014T

GE-EPDS

CED	BW	WW	YW	MK	TM	CEM	SC	DOC	YG	CW	REA	MB	\$MTI
13	-1.7	59	84	28	58	6	1.15	9	-0.32	16	0.64	0.22	58.29
30%	25%	45%	55%	10%	25%	75%	20%	85%	20%	95%	60%	65%	55%

Feed Efficiency Data:
ADG 3.31 // Feed/Gain 5.28

46

WZRKLOS ANGELES9029L

03/08/2023 • PUREBRED(100/86.1) • HOMO POLLED (P-2) • RED • NPM2605051 • WZRK 9029L • BULL

Act. BW: 84
Adj. WW: 627
Adj. YW: 1123
Adj. REA: 16.86
Adj. FAT: 0.32
Adj. IMF: 1.92
Adj. SC:

WULFS YANKEE K689Y
WULFS APOSTLE T343A
WULFS ULTRA DIAMOND 8571U

HUNT MR JOCK 44J
WULFS SOLOIST 6284S
JLWM DIRE STRAYTS 4109P
WULFS NICHOLA 3279N
AHCC BARN BURNER B907
PBRS ZSA ZSA 246Z
WULFS XCLUSIVE 2458X
WZRK MISS TUFFENUFF 1061Y

CELL ENVISION 7023E
WZRK 9029G
WZRK CHOCOLATE CHIP 5042C

GE-EPDS

CED	BW	WW	YW	MK	TM	CEM	SC	DOC	YG	CW	REA	MB	\$MTI
9	-0.2	66	98	24	57	6	1.3	16	-0.38	29	1.3	-0.06	50.82
60%	25%	45%	50%	55%	50%	50%	4%	15%	80%	35%	15%	60%	65%

Feed Efficiency Data:
ADG 3.10 // Feed/Gain 5.71

47

WZRKLEGENDARY5028L

03/08/2023 • PUREBRED(100/89.1) • HOMO POLLED (P-1) • RED • NPM2605052 • WZRK 5028L • BULL

Act. BW: 102
Adj. WW: 643
Adj. YW: 1305
Adj. REA: 18.46
Adj. FAT: 0.23
Adj. IMF: 2.03
Adj. SC:

WULFS YANKEE K689Y
WULFS APOSTLE T343A
WULFS ULTRA DIAMOND 8571U

HUNT MR JOCK 44J
WULFS SOLOIST 6284S
JLWM DIRE STRAYTS 4109P
WULFS NICHOLA 3279N
WULFS XTRACTOR X233X
WZRK MISS NASCAR 8012U
ROMN TUFF ENUFF 103T
WZRK MISS WARDEN 8020U

WZRK ATLAS 8012A
WZRK MISS ATLAS 5028C
WZRK MISS TUFF ENUFF 2063

GE-EPDS

CED	BW	WW	YW	MK	TM	CEM	SC	DOC	YG	CW	REA	MB	\$MTI
1	3.8	67	98	24	58	1	0.95	16	-0.66	41	1.84	-0.1	51.95
>95%	95%	45%	50%	55%	45%	>95%	15%	15%	3%	10%	1%	75%	55%

Feed Efficiency Data:
ADG 4.14 // Feed/Gain 4.70



Black Yearling Bulls

48

WZRKLINCOLN1030L

03/09/2023 • LIM-FLEX(75/65.8) • HOMO POLLED (P-2) • HOMO BLACK (T) • LFM2605054 • WZRK 1030L • BULL

Act. BW: 101
Adj. WW: 709
Adj. YW: 1396
Adj. REA: 17.98
Adj. FAT: 0.27
Adj. IMF: 1.965
Adj. SC:

TNGC EMPIRE 736E
WZRK JAMOCHA 1044J
WZRK MISS PRIMESTAR 1044Y

MAGS FEDERAL RESERVE ET
WZRK 1030J
WZRK FLIRTATIOUS 8016F

TMCK CASH FLOW 247C
MAGS BETH ET
WZRK PRIMESTAR 861P
WZRK MISS HOLYFIELD 1034L
MAGS CABLE
CJSL 4357B ET
HUNT CREDENTIALS 37C ET
WZRK DAYTIME 6036D

GE-EPDS

WZRK

CED	BW	WW	YW	MK	TM	CEM	SC	DOC	YG	CW	REA	MB	\$MTI
9	0.7	76	125	28	66	7	0.8	15	-0.1	32	0.47	0.59	75.4
70%	45%	25%	20%	25%	20%	35%	60%	20%	65%	65%	80%	5%	5%

Feed Efficiency Data:
ADG 4.29 // Feed/Gain 4.58

49

WZRKLUCA9001L

03/05/2023 • PUREBRED(93/82.7) • HET POLLED (T) • BLACK • NPM2605039 • WZRK 9001L • BULL

Act. BW: 101
Adj. WW: 675
Adj. YW: 1357
Adj. REA: 15.1
Adj. FAT: 0.32
Adj. IMF: 2.525
Adj. SC:

CELL ENVISION 7023E
CELL HISTORY BUFF 0245H ET
CELL MISS RESPONDER 6078D

HUNT CREDENTIALS 37C ET
WZRK 9001G ET
WZRK MISS TUFFENUFF 3018A

AHCC BARN BURNER B907
PBRS ZSA ZSA 246Z
COLE ABSOLUTE 05A
MAGS YODH
HUNT TESTAMENT 40T
JKTW WHISKEY RIVER 985 W
ROMN TUFF ENUFF 103T
WZRK MISS NASCAR 1064Y

GE-EPDS

WZRK

CED	BW	WW	YW	MK	TM	CEM	SC	DOC	YG	CW	REA	MB	\$MTI
6	1.9	63	102	27	58	4	1.55	16	-0.23	38	0.94	0.32	62.76
90%	65%	55%	40%	30%	45%	80%	3%	15%	>95%	10%	75%	2%	5%

Feed Efficiency Data:
ADG 4.26 // Feed/Gain 4.71

50

WZRKLEWIS & CLARK8004L

03/06/2023 • PERCENTAGE(84/73.6) • HOMO POLLED (P-2) • BLACK • NXM2605042 • WZRK 8004L • BULL

Act. BW: 91
Adj. WW: 676
Adj. YW: 1368
Adj. REA: 17.12
Adj. FAT: 0.34
Adj. IMF: 2.23
Adj. SC:

CELL ENVISION 7023E
COLE JACKPOT 38J ET
COLE MISS XRATED 354A

ROMN TUFF ENUFF 103T
WZRK FLO 8004F
WZRK DAISY 6010D ET

AHCC BARN BURNER B907
PBRS ZSA ZSA 246Z
MRL X-RATED 014X
COLE MISS PRODUCTION 874U
WULFS RANSOM 3059R
ROMN ROBERTA 35R
MAGS Y-AXIS
WZRK MISS KABOOM 4027P

GE-EPDS

WZRK

CED	BW	WW	YW	MK	TM	CEM	SC	DOC	YG	CW	REA	MB	\$MTI
14	-0.3	61	99	23	53	10	1	14	-0.24	36	0.87	0.25	59.73
20%	45%	40%	30%	45%	45%	15%	25%	15%	30%	55%	35%	60%	50%

Feed Efficiency Data:
ADG 4.33 // Feed/Gain 5.24

51

WZRKLAZY DAY9207L

03/08/2023 • LIM-FLEX(75/63.4) • HOMO POLLED (P-2) • HET BLACK (T) • LFM2605053 • WZRK 9207L • BULL

Act. BW: 86
Adj. WW: 640
Adj. YW: 1307
Adj. REA: 15.16
Adj. FAT: 0.34
Adj. IMF: 2.15
Adj. SC:

TMCK CASH FLOW 247C
TNGC EMPIRE 736E
MAGS BETH ET

COLE CADILLAC 05C
WZRK 9207 ET
WZRK MISS NASCAR 8012U

MAGS ALI
TMCK NINA 17X
MAGS ZODIAC
MAGS THEATRICAL
ROMN TUFF ENUFF 103T
COLE MISS XRATED 354A
WULFS NASCAR G949N
WZRK MISS F LINER 1021L

GE-EPDS

WZRK

CED	BW	WW	YW	MK	TM	CEM	SC	DOC	YG	CW	REA	MB	\$MTI
8	-0.7	60	94	24	54	4	0.53	17	-0.12	20	0.47	0.24	57.86
85%	15%	85%	85%	60%	85%	85%	85%	10%	60%	95%	80%	60%	75%

Feed Efficiency Data:
ADG 4.17 // Feed/Gain 5.11

52

WZRKLIGHT MY FIRE8036L

01/24/2023 • PUREBRED(100/84.6) • HOMO POLLED (P-2) • HET BLACK (T) • NPM2604981 • WZRK 8036L • BULL

Act. BW: 93
Adj. WW: 622
Adj. YW: 1260
Adj. REA: 15.3
Adj. FAT: 0.19
Adj. IMF: 3.035
Adj. SC:

CELL ENVISION 7023E
WZRK JUGGERNAUT 4009J
WZRK MISS TFFENUFF 4009B

WULFS XCLUSIVE 2458X
WZRK FIONA 8036F
WZRK BLACK WIDOW 4038B

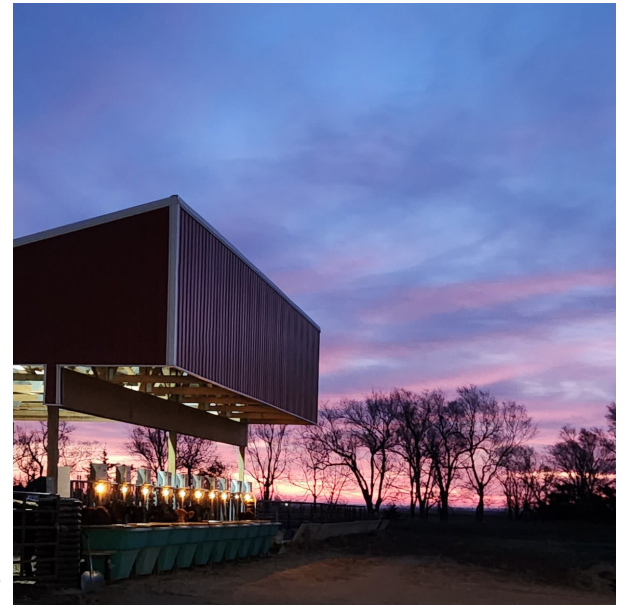
AHCC BARN BURNER B907
PBRS ZSA ZSA 246Z
ROMN TUFF ENUFF 103T
WZRK MISS WIDELoad 2068Z
WZRK PRIMESTAR 861P
WULFS MISSIVE 2258M
RUNL STETSON 850S
WZRK MISS NOBEL PRIZE6027

GE-EPDS

WZRK

CED	BW	WW	YW	MK	TM	CEM	SC	DOC	YG	CW	REA	MB	\$MTI
10	1	62	100	18	49	4	0.8	19	-0.56	26	1.24	0.21	61.13
50%	50%	60%	45%	95%	90%	80%	25%	2%	20%	45%	20%	10%	10%

Feed Efficiency Data:
ADG 3.99 // Feed/Gain 6.02



EFFICIENCY

Meets Marbling

WZRK

Reference Sires



WULFS **EISENHOWER** 3616E



CELL **ENVISION** 7023E



CELL **HISTORY BUFF** 0245H



CJS **DATA BANK** 6124D



WULFS **APOSTLET** 343A



WZRK **GAME CHANGER** 4015G



WZRK **JUGGERNAUT** 4009J



TNGC **EMPIRE** 736E

WZRK Reference Sires



WULFS **EMPRIZE**2424E



WULFS **GALLAGHER**7056G



LFL **ESQUIRE**7084E ET

Limousin Sires

CELL ENVISION 7023E
 CELL HISTORY BUFF 0245H ET
 CJSI DATA BANK 6124D ET
 COLE GENESIS 86G
 COLE JACKPOT 38J ET
 L7 EVERLAST 7007E
 WULFS APOSTLE T343A
 WULFS EISENHOWER 3616E
 WZRK GALAHAD 9216G ET
 WZRK GAME CHANGER 4015G
 WZRK JACK BLACK 9048J
 WZRK JUGGERNAUT 4009J

Sire

AHCC BARN BURNER B907
 CELL ENVISION 7023E
 CELL ENVISION 7023E
 HUNT CREDENTIALS 37C ET
 CELL ENVISION 7023E
 WULFS XCELLSIOR X252X
 WULFS YANKEE K689Y
 WULFS BILLY THE KID K234B
 HUNT CREDENTIALS 37C ET
 HUNT CREDENTIALS 37C ET
 WULFS GALLAGHER 7056G
 CELL ENVISION 7023E

Dam

PBR5 ZSA ZSA 246Z
 CELL MISS RESPONDER 6078D
 AUTO CARMINDA 656S
 COLE MISS XRATED 354A
 COLE MISS XRATED 354A
 MISS L7 934W
 WULFS ULTRA DIAMOND 8571U
 WULFS ABRIL 3616A
 WZRK MISS TUFFENUFF 3018A
 WZRK MISS TUFFENUFF 4015B
 WZRK 9048G
 WZRK MISS TFFENUFF 4009B

CED	BW	WW	YW	MK	TM	CEM	SC	DOC	YG	CW	REA	MB	\$MTI
6	2.8	98	167	13	62	4	2.3	21	-0.36	66	1.56	0.11	67.15
4	4.2	90	151	19	64	2	2.1	13	-0.43	57	1.51	0.22	69.06
9	1.9	83	130	19	52	5	0.4	15	-0.17	34	0.52	0.09	59.89
16	-1.6	67	106	34	68	12	0.6	15	-0.06	37	0.51	0.68	75.64
9	2.8	80	130	24	64	5	1.3	14	-0.31	49	1.2	0.39	70.98
12	0.7	66	88	28	61	6	-0.2	2	-0.79	15	1.67	-0.11	52.2
5	0.5	55	74	38	65	4	1.4	16	-0.59	11	1.49	-0.18	44.74
9	4.6	94	148	36	83	8	1.5	15	-0.33	55	1.16	0.04	62.63
7	0.9	57	88	36	65	5	0.7	17	-0.33	22	0.73	0.31	61.24
9	0.6	76	123	37	75	7	2.1	18	-0.17	58	0.74	0.36	67.52
18	-2.4	65	90	22	54	9	0.7	13	-0.21	40	0.85	0.32	62.74
11	0.2	74	117	19	56	7	1.4	16	-0.57	37	1.45	-0.03	56.17

Lim-Flex Sires

CHR HARD ROCKS 151H
 DANH DURHAM 54D
 LFL ESQUIRE 7084E ET
 TNGC EMPIRE 736E
 WULFS EMPRIZE 2424E
 WULFS GALLAGHER 7056G
 WZRK HOMETOWN 4055H
 WZRK JAMOCHA 1044J

Sire

MAGS FAULTLESS 154F
 HUNT BILLY RAY 80B
 MAGS CABLE
 TMCK CASH FLOW 247C
 BIEBER DEEP END B597
 WULFS XCELLSIOR X252X
 TMCK CASH FLOW 247C
 TNGC EMPIRE 736E

Dam

CHR CRICKET 161C
 DANH ALTO 35A
 AUTO BLISS 265Y
 MAGS BETH ET
 WULFS ZUNI 2424Z
 WULFS EDWINNA 7056E
 WZRK MISS TUFFENUFF 4055B
 WZRK MISS PRIMESTAR 1044Y

CED	BW	WW	YW	MK	TM	CEM	SC	DOC	YG	CW	REA	MB	\$MTI
13	-0.1	94	150	28	75	5	1.2	12	0.03	56	0.59	0.81	87.95
16	-1.5	70	116	13	48	13	0.7	15	-0.27	13	0.63	0.24	62.27
10	2.2	82	137	21	62	6	0.6	17	0	46	0.47	0.58	76.19
8	0.9	91	160	23	68	2	1.6	23	0.19	59	0.35	0.54	76.16
13	-1	86	134	25	68	10	1.4	13	-0.31	51	1.04	0.49	76.56
20	-4.8	57	85	26	55	9	0.7	16	-0.18	34	0.76	0.38	62.54
5	3.4	92	149	22	68	3	0.9	14	-0.01	51	0.6	0.66	82.04
11	-1.6	59	106	23	53	5	0.5	16	-0.14	39	0.6	0.37	62.83



LIMOUSIN

Think

Docility & Calving Ease

"Docility and calving ease are the two number-one things for a commercial rancher. And the docility of the Lim-Flex is really great. But calving ease is top of the line. She has to be able to produce a calf without a lot of problems." - *Shane Whiting, Commercial Cow/Calf Producer*

Feed Efficiency & Carcass Merit

"Using a Continental breed such as Limousin or Lim-Flex on a British-based cow herd gives you the best of both worlds – the maximum combination of a balance between gain, feed efficiency and carcass quality." - *Dr. Kee Jim, CEO of Feedlot Health Management Services*

Improved Marbling

"Genomic testing, breeder focus and the heritability of carcass traits have enabled all of us as seedstock producers to make rapid genetic gain in carcass quality. In fact, the marbling EPD value in our breed reflects an improvement of 0.25 to 0.35 for both Limousin and Lim-Flex, making them very comparable to other Continental breeds." - *Dan Hunt, Seedstock Cow/Calf Producer*



Limousin@NALF.org • 303-220-1693 • NALF.org

6155 S Main Street, Suite 245, Aurora, CO 80016

Find us on Facebook and Instagram @Limousin_NALF

TO IMPROVE IS TO CHANGE; TO PERFECT IS TO CHANGE OFTEN

CHURCHILL



Custom Genetic Solutions is a collaborative effort by a group of agricultural industry leaders who viewed a need for first-class custom semen collection, processing, and preservation.

Located in Mitchell, South Dakota, **Custom Genetic Solutions** strives to provide a premier custom collection experience with welcoming customer service and the highest quality bull care, all while maintaining strict health and semen quality standards with international shipping available.



40275 257th St • Mitchell, SD 57301 • 605-996-STUD (7883)

Frank Jackson 507-822-1794

THANK YOU

FOR BLESSING US WITH 44
EXCEPTIONAL YEARS!



We appreciate your support and interest in our breeding program. We take the people side of the business very seriously and never for granted, that's why producing a quality product and making sure our customers are satisfied has always been top priority. Simply put, your attendance and participation in our sale event has humbled us, and we wish you many successes with your purchases.

THANK YOU FOR TAKING TIME TO VIEW THE CATALOG AND ALLOWING US THE OPPORTUNITY TO EARN YOUR BUSINESS.

SIGHT-UNSEEN PURCHASE PROGRAM If you're unable to attend you tell us what you're looking for, we'll do our best to meet those needs, and if you're not satisfied when you get your bull(s), you don't own them!

SALE AVERAGES

Number of Lots

Sale Gross

Sale Average

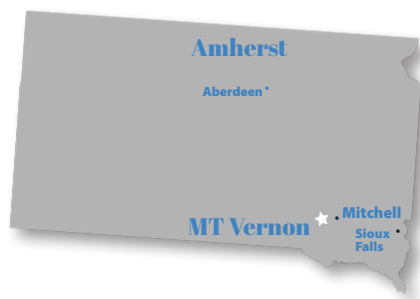
Feature Bulls

Yearling Bulls

NOTES

PLAN TO ATTEND...

Symens Brothers' Sale
Thursday, February 22, 2024
At the ranch • Amherst, SD



Special Announcement:

In the unlikely event of winter storm sale postponement, the new sale date would be
Wednesday, February 28, 2024 @ 1:00pm.



MC Marketing Management
648 West Sawgrass Trail
Dakota Dunes, SD 57049

Catalog Design By:
Mallory Blunier, Limousin Media



BULL

Wieczorek Limousin

SALE

FEBRUARY 23, 2024 • 1PM CST • AT THE RANCH • MT VERNON, SD