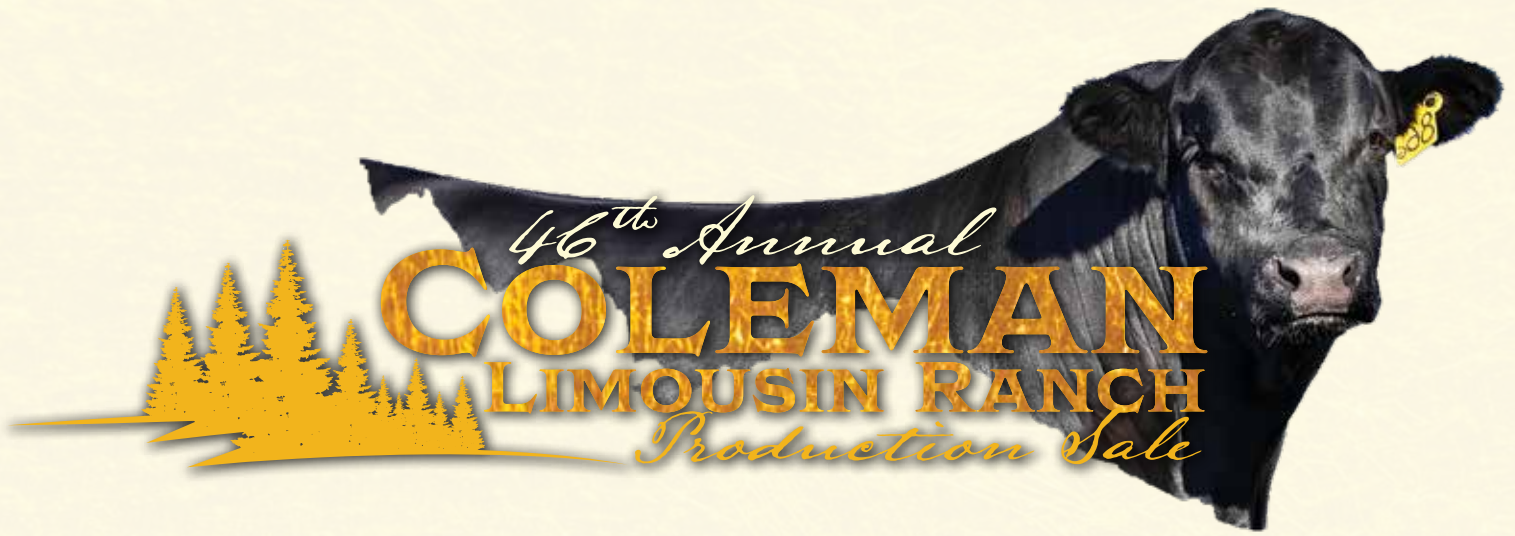


46th Annual
COLEMAN
LIMOUSIN RANCH
Production Sale

TUESDAY, APRIL 2, 2024
1 p.m. MST - Five Valleys Livestock - Missoula, Montana



SELLING 100 YEARLING BULLS LIMOUSIN & LIM-FLEX

SPECIAL GUESTS

Delvin Heldermon, Special Assignment
 DeRon Heldermon, Special Assignment
 Jay Rost, DVAuction
 Justin Mauler, Five Valleys Livestock
 Matt Wznick, *Western Ag Reporter*

SALE MANAGEMENT

Kiley McKinna • (402) 350-3447
 Wiley Fanta • (320) 287-0751
 648 Sawgrass Trl. • Dakota Dunes, SD 57049
 mcmarketingsales@aol.com
 mcmarketingmanagement.com



SALE-DAY PHONES

(406) 728-3052
 Trent Coleman (406) 253-1113
 Larry Coleman (406) 370-5349
 Joel Fuhrmann (406) 531-1315
 Kiley McKinna (402) 350-3447
 Wiley Fanta (320) 287-0751

AUCTIONEER

Chisum Peterson (605) 730-4214



BID LIVE on the internet at DVAuction.com
 Register at DVAuction.com one day prior to the sale.

SALE ACCOMMODATIONS

Hampton Inn (406) 549-1800
 C'Mon Inn (406) 543-4600

VETERINARIAN

All bulls have been fertility tested by
 Dr. Leroy Hoversland, Ronan, MT, (406) 676-0090.

CHECK OUR WEBSITE FOR UPDATED INFORMATION

- Scrotal Measurements
- Videos of Sale Lots

www.colemanlimousinranch.com

SCHEDULE

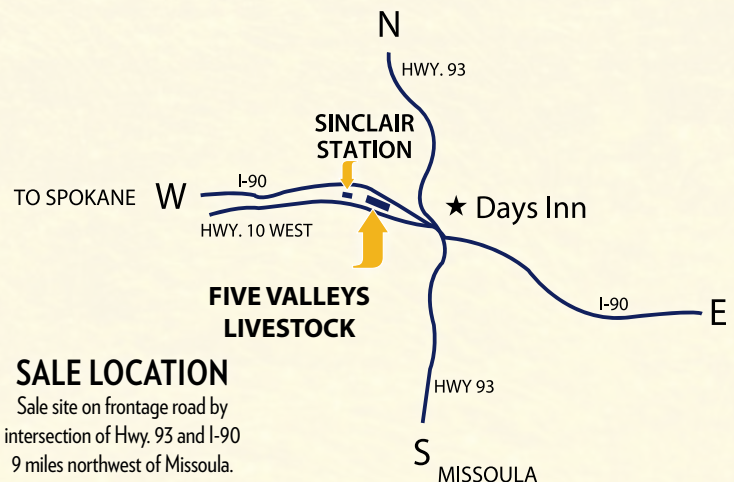
MONDAY, APRIL 1, 2024

Noon - Cattle Viewing

TUESDAY, APRIL 2, 2024

11:30 a.m. - Lunch

1:00 p.m. - Coleman Limousin Ranch
 46th Annual Bull Sale



SALE LOCATION

Sale site on frontage road by
 intersection of Hwy. 93 and I-90
 9 miles northwest of Missoula.

Dear Fellow Cattlemen,

All of us at Coleman Limousin Ranch welcome you to our 46th Annual Bull Sale. Thank you very much for your interest, support and confidence in our program. We feel the next few years will be exciting times in the cattle business. The United States cow herd is the smallest it has been in 50 years, which should result in record calf prices.

Our 2024 sale offering is just as powerful and consistent as in previous years. The bulls in this offering are sired by proven AI sires. Our cowherd is backed by generations of proven genetics. The bulls are fed a high roughage diet with enough energy to let their genetics express themselves. A nice benefit to our customers is our large sire groups, giving them a consistent set of bulls to choose from. The Limousin and Lim-Flex bulls in this sale offering are exceptional for performance and carcass traits.

We are excited to offer sons of our proven donor cows- COLE Beauty 276Z, COLE Miss Production 104Y and COLE Miss X-Rated 354A.

The bulls have been semen tested, ultrasound scanned, and have complete performance records and EPDs. The bulls sell with a first season breeding guarantee (see page 2 for more details). We offer free nationwide delivery except states East of the Mississippi River. Bulls that are picked up on sale day will receive a \$100 per head discount. Bulls going to NV and UT will be ready for delivery approximately five days after the sale, when Trich testing is completed.

The sale will be broadcast live by DV Auction. You can watch it on the internet and bid with DV Auction's "real time" internet bidding services. Videos of the bulls will be posted to our website around mid-March.

Plan to be with us for the sale event. We invite you to enjoy a tri-tip roast beef lunch on sale day starting at 11:30 am.

We hope this catalog's information will be helpful. Give us a call if we can be of further assistance to you. We look forward to having you with us April 2.

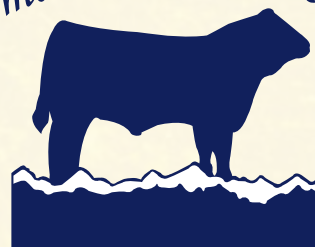
Sincerely,
Coleman Limousin Ranch
Larry & Anita
Trent & Melissa



COLE BULLS SELLING...

- 58 Limousin
- 40 Lim-Flex
- 2 Red
- 53 Homozygous Black
- 86 Homozygous Polled
- 47 Double Homozygous

Coleman Limousin Ranch



53717 Gallagher Road Charlo, MT 59824
Larry & Anita Coleman (406) 644-2300
Trent & Melissa Coleman (406) 644-2707
www.colemanlimousinranch.com

COLE

Our story began in 1970 when Limousin were brand new to North America. Muscle and efficiency is what drew us to the breed and what keeps us here today. Many have heard of the sire COLE First Down. He helped put the COLE prefix on the map.

Today our 4 Elite Focus Dams and 16 Focus Dams form the foundation of a strong cow base. These momma cows do their job by raising powerful bulls our customers demand and by replenishing our replacement pens.

Our family enjoys raising Limousin and Lim-Flex cattle. We've had a front-row seat in being a part of this breed's growth and our passion is as strong as ever. We look forward to another 50 years.

GENERAL SALE INFORMATION

TIME AND LOCATION: 1:00 p.m. Tuesday, April 2, 2024. The sale will be held at the Five Valleys Livestock, Missoula, Montana.

TRANSPORTATION: Commercial as well as private aircraft service is available to the area. Rental cars are available at the airport, or with advance notice your plane can be met at the airport.

TELEPHONE: Calls may be placed directly to the sale site by calling (406) 728-3052.

TERMS: Terms of the sale are cash, unless prior credit arrangements are established between buyer and seller. Settlements are to be made with the clerk immediately after the conclusion of the auction.

HEALTH: All cattle will be tested for Brucellosis within thirty (30) days of the sale. Health certificates will be provided with each lot sold.

DELIVERY: Free nationwide delivery to any central U.S. points. Bulls selling to states east of the Mississippi River will be charged \$500 per head. In some cases, this may require additional transportation by the buyer from a central location to their ranch. Every effort will be made to deliver to the buyer's ranch or to a convenient location as close to the buyer's ranch as possible. Buyers who do their own hauling will receive a \$100 per head credit.

FIRST BREEDING SEASON GUARANTEE: All bulls, 12 months of age and over at the time of sale, are guaranteed breeders. A bull is determined a breeder when he settles one or more females and/or passes a satisfactory semen test. Certificates of a satisfactory semen test will be provided at sale time for all bulls. In the first year, if a problem occurs with a bull, we will give you a suitable replacement or you will receive full credit minus the salvage value of the original bull toward another purchase in next year's sale. Please notify the seller of the bull as soon as possible if a bull is injured. This guarantee is a contract between the buyer and seller. All other parties are acting as agents or representatives only.

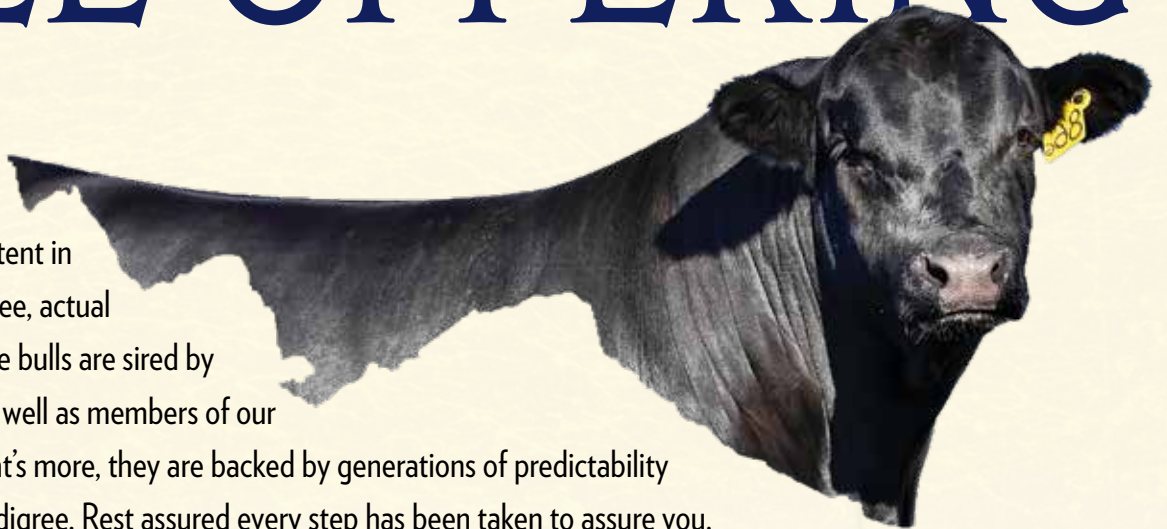
LIABILITY: Each animal will be at the buyer's risk as soon as sold, but will be cared for by the seller for a reasonable period of time. Every precaution will be taken for the welfare of the cattle sold. Neither owner nor sale manager can be responsible for any accidents, but every effort will be made to provide for the safety and comfort of those attending the sale.

ANNOUNCEMENTS: Announcements made sale day take precedence over printed material in catalog. EPDs current as of 2/28/24.

RETAINED INTEREST: Selling full possession and one-half semen interest on all bulls in this offering.

The 2024 BULL OFFERING

This year's group of bulls is both powerful and consistent in terms of phenotype, pedigree, actual performance and EPDs. The bulls are sired by industry leading AI sires, as well as members of our top-notch bull battery. What's more, they are backed by generations of predictability on the dam side of their pedigree. Rest assured every step has been taken to assure you, our buyers, that these bulls will perform as expected. They have been culled judiciously, with all of the necessary data collection documented along the way. We feel these bulls are right for the times and offer both our seedstock and commercial customers genetics capable of excelling in a variety of marketing scenarios. It will be our pleasure to serve as your genetic source not only this year, but long into the future as well.





COLE CADILLAC 05C • Paternal grandsire of Lot 1



COLE LEGEND 29L

PUREBRED(90/76.5) • HOMO POLLED (P-1) • HET BLACK (T)
02/06/2023 • COLE 29L • NPM2568080

COLE CADILLAC 05C
COLE FORTUNE 12F
COLE MISS AUSTIN 3157A

CELL ENVISION 7023E
COLE MISS ENVISION 1051J
COLE MISS ARCHITECT 649D

ROMN TUFF ENUFF 103T
COLE MISS XRATED 354A
AHCC XPENSE ACCOUNT X516
COLE MISS TRAVELER 015X
AHCC BARN BURNER B907
PBRS ZSA ZSA 246Z
COLE ARCHITECT 08A
COLE MISS FIRSTDOWN 9185

ACT BW
74

ADJ WW
725

ADJ YW
1254

	CD	BW	WW	YW	MK	CM	SC	DC	YG	CW	RE	MB	\$MI
EPDs	15	-1.4	69	114	22	10	.66	14	-29	39	1.13	.11	57
% RANK	10	10	35	15	75	4	40	40	95	10	35	20	25

UFAT: 0.47 • UREA: 13.20 • UIMF: 2.675

What an exceptional way to lead off this impressive offering! COLE Legend 29L combines a notable pedigree, a balanced EPD profile and an eye-catching phenotype. His sire, COLE Fortune 12F, has proven to transmit progeny that pair big data with stand-out phenotypes. COLE Fortune 12F is a go-to sire at Coleman Limousin. His dam is a beautiful patterned daughter of CELL Envision 7023E. CELL Envision 7023E is deceased but he continues to sire calves that sort to the top of astute breeding programs across the country. On paper, this bull has numbers worth studying. He is a true curve bender when you study his breed-leading calving ease, birth weight and carcass weight numbers, all ranking in the top 10% of the breed. He also ranks in the top 15% for yearling weight, top 20% for marbling and top 25% for mainstream terminal index. Aside from his numerical advantages, phenotypically he is heavy structured, big-bodied and level topped, with extra muscle expression while being free moving off both ends of his skeleton. What's more, COLE Legend 29L was raised by a first calf heifer. Don't miss out on your chance to own this remarkable individual that will predictably advance your breeding program to new heights.



COLE LANDMARK 49L

PUREBRED(87/77.9) • HOMO POLLED (P-2) • HOMO BLACK (T)
02/12/2023 • COLE 49L • NPM2568156

HUNT CREDENTIALS 37C ET
COLE GENESIS 86G
COLE MISS XRATED 354A

SYES CURTAIN CALL 466C
COLE MISS CURTAIN CALL 982G
COLE MISS BUSINESSMAN 647D

HUNT TESTAMENT 40T
JKTW WHISKEY RIVER 985 W
MRL X-RATED 014X
COLE MISS PRODUCTION 874U
WULFS XCLUSIVE 2458X
MISS SYES FRIENDLY 465Z
COLE BUSINESSMAN 104B
COLE MISS TRAVELER 0103

ACT BW
90

ADJ WW
849

ADJ YW
1428

	CD	BW	WW	YW	MK	CM	SC	DC	YG	CW	RE	MB	\$MI
EPDs	11	1.1	76	122	37	6	.9	13	-.26	40	.94	.32	67
% RANK	40	50	15	10	1	50	15	55	>95	10	75	3	2

UFAT: 0.27 • UREA: 17.32 • UIMF: 2.645

Take note of this well-balanced individual that comes to you in a heavily muscled, black-hided, double homozygous package. We think COLE Landmark 49L does many things right. He is a highly usable and versatile COLE Genesis 86G son, the HUNT Credentials son that was the \$40,000 top seller in the 2020 Coleman Limousin Bull Sale. His dam has three calves with a WW ratio of 110. Visually, COLE Landmark 49L is phenotypically elite—wide based, stout featured and loaded full of red meat. Study his numerics and realize he, too, has breed leading numerics, ranking in the top 1% for milk, top 2% for mainstream terminal index, top 3% marbling, top 10% yearling weight, and carcass weight and top 15% for weaning weight. With that you are left with a bull that can be used with great success in a variety of breeding scenarios. The earning potential is all here, and we're excited to offer a bull of this nature and proven lineage. Bid with confidence, he is the kind of bull that can change a calf crop for the better.



COLE GENESIS 86G • Sire of Lot 2



COLE LANDSLIDE 25L

PERCENTAGE(85/74.8) • HOMO POLLED (P-2) • HET BLACK (T)
02/02/2023 • COLE 25L • NXM2568077

COLE CADILLAC 05C
COLE FORTUNE 12F
COLE MISS AUSTIN 3157A

ROMN TUFF ENUFF 103T
COLE MISS XRATED 354A
AHCC XPENSE ACCOUNT X516
COLE MISS TRAVELER 015X
MAGS ANCHOR
LVLS 9066U
MRL X-RATED 014X
COLE MISS KATYMAY 9105W

ACT BW
86
ADJ WW
830
ADJ YW
1373

AHCC EARNING POWER 900E ET
COLE MISS POWER 1081J
COLE MISS XRATED 3125A

GE-EPDs

	CD	BW	WW	YW	MK	CM	SC	DC	YG	CW	RE	MB	\$MI
EPDs	13	1.8	87	143	32	10	.6	13	-28	35	.96	.28	69
% RANK	30	80	2	1	2	10	60	25	25	55	25	55	15

UFAT: 0.44 • UREA: 16.62 • UIMF: 2.345

COLE Landslide 25L is truly the cattleman's kind. His sire, COLE Fortune 12F, is a go-to sire at Coleman Limousin who consistently sires standout progeny. His dam is COLE Miss Power 1081J, daughter of AHCC Earning Power 900E, a first calf heifer. On paper COLE Landslide 25L has numbers worth studying—take note of his breed-leading yearling weight—a trait that ranks in the top 1% of the breed. He also ranks in the top 2% for both weaning weight and milk. Also note, he ranks in the top 10% for calving ease maternal, top 15% for mainstream terminal index and 123 WW ratio 120 YW ratio. Aside from his numerical advantages, phenotypically he is powerfully built and functionally correct. COLE Landslide 25L brings the performance and presence that great cattlemen search for, all while uniquely pairing an impressive numeric profile.



COLE FORTUNE 12F • Sire of Lot 1



COLE LARIAT 105L

PERCENTAGE(81/72) • HOMO POLLED (P-2) • HOMO BLACK (T)
02/24/2023 • COLE 105L • NXM2568195



HUNT CREDENTIALS 37C ET
COLE GENESIS 86G
COLE MISS XRATED 354A

AHCC XPENSE ACCOUNT X516
COLE MISS AUSTIN 3157A
COLE MISS TRAVELER 015X

HUNT TESTAMENT 40T
JKTW WHISKEY RIVER 985 W
MRL X-RATED 014X
COLE MISS PRODUCTION 874U
KAJO RESPONDER 120R
AHCC MISS NORHTSTAR R516
COLEMAN TRAVELER 797
COLE 484P

ACT BW
76

ADJ WW
781

ADJ YW
1254

GE-EPDs

	CD	BW	WW	YW	MK	CM	SC	DC	YG	CW	RE	MB	\$MI
EPDs	16	-.7	75	122	35	11	.7	15	-.1	35	.66	.4	68
% RANK	10	40	10	10	1	3	50	10	60	55	55	35	20

UFAT: 0.46 • UREA: 15.96 • UIMF: 3.045

Another high-growth COLE Genesis 86G son that will catch your eye from across the pen. His donor dam is the mother of one of our go-to sires, COLE Fortune 12F. In addition to his phenotypic advantages, he ranks in the top 1% of the breed for milk, top 3% for calving ease maternal and top 10% for calving ease, weaning weight, yearling weight and docility. He is the total package and one you will want to study long and hard. Make no mistake and be sure to have him on the top of your list sale day.



COLE GENESIS 86G • Sire of Lot 4



COLE MISS AUSTIN 3157A • Dam of Lot 4



COLE MISS XRATED 354A • Dam of Lot 5



COLE HOMERUN 51H ET • Sire of Lot 6



COLE LEGACY 60L

PERCENTAGE(81/70.3) • HOMO POLLED (P-1) • HET BLACK (T)
02/15/2023 • COLE 60L • NXM2566617

AHCC BARN BURNER B907
CELL ENVISION 7023E
PBRS ZSA ZSA 246Z

MRL X-RATED 014X
COLE MISS XRATED 354A
COLE MISS PRODUCTION 874U

AHCC WESTWIND W544
LVLS 9066U
TW FIRE N' ICE
PBRS ULL 854U
CTCA BUCKEYE BULL 8261U
MRL TASTE OF COUNTRY 790T
COLEMAN PRODUCTION 608
COLE 4142P **GE-EPDs**

ACT BW
84

ADJ WW
700

ADJ YW
1186

	CD	BW	WW	YW	MK	CM	SC	DC	YG	CW	RE	MB	\$MI
EPDs	11	1.2	79	128	25	7	1	16	-.21	53	1.1	.35	68
% RANK	55	70	5	4	25	60	25	5	35	15	15	45	20

UFAT: 0.27 • UREA: 14.08 • UIMF: 2.410

If you're searching for a big-time growth bull, look no further than COLE Legacy 60L and his 700 lb. 205-day weight. This explosive growth could be predicted due to his performance EPDs—his weaning weight and yearling weight both rank in the top 5% of the breed or better. This combination of presence and numbers project him to be the type of herd bull that produces well-balanced, polled, stout calves year in and year out. He is a full brother to past top-sellers COLE Homerun 51H and COLE Jackpot 38J.



COLE LEGION 55L

PERCENTAGE(77/66.7) • HOMO POLLED (P-1) • HOMO BLACK (P-1)
02/14/2023 • COLE 55L • NXM2568161

CELL ENVISION 7023E
COLE HOMERUN 51H ET
COLE MISS XRATED 354A

MAGS AVIATOR
CELL 7059E
LVLS ZABEL 9078Z

AHCC BARN BURNER B907
PBRS ZSA ZSA 246Z
MRL X-RATED 014X
COLE MISS PRODUCTION 874U
MAGS WINSTON
MAGS XTRA REST
LVLS TOP CRITERIA 8862P
LVLS MISS JOHN 9078X

ACT BW
86

ADJ WW
700

ADJ YW
1169

	CD	BW	WW	YW	MK	CM	SC	DC	YG	CW	RE	MB	\$MI
EPDs	11	.3	70	112	27	7	.85	16	-.11	44	.84	.48	70
% RANK	55	55	20	15	15	60	40	5	55	30	35	25	15

UFAT: 0.34 • UREA: 14.26 • UIMF: 3.275

Here is a bull that deserves some serious attention. Study his length of body, level top and hind quarter dimension. He is sired by COLE Homerun 51H, the top-selling bull in our 2021 Bull Sale. His dam is MAGS Aviator daughter with a great look. Numerically, COLE Legion 55L has a well-balanced EPD profile highlighted by top 15% rankings for both yearling weight, milk and mainstream terminal index. This double homozygous herd sire should be at the top of your list.



CELL ENVISION 7023E • Sire of Lots 7 & 8



Lot 8



Lot 7



COLE MISS PRODUCTION 104Y • Dam of Lots 7 & 8

COLE LINEBACKER 82L

LIM-FLEX(68/60.4) • HOMO POLLED (P-1) • HET BLACK (T)
02/18/2023 • COLE 82L • LFM2566631

AHCC BARN BURNER B907
CELL ENVISION 7023E
PBRS ZSA ZSA 246Z

COLEMAN PRODUCTION 608
COLE MISS PRODUCTION 104Y
COLE 50K

AHCC WESTWIND W544
LVLS 9066U
TW FIRE N' ICE
PBRS ULL 854U
GAR PRECISION 1680
COLEMAN BLACKCAP 211
COLE FIRST DOWN 46D
JHLL MS BITTERROOT 041B **GE-EPDs**

ACT BW 88
ADJ WW 752
ADJ YW 1232

	CD	BW	WW	YW	MK	CM	SC	DC	YG	CW	RE	MB	\$MI
EPDs	12	2.1	83	134	19	7	1.2	16	-19	51	1.04	.3	68
% RANK	30	75	10	10	95	35	20	15	40	10	10	45	25

UFAT: 0.35 • UREA: 15.74 • UIMF: 2.575

COLE LINCOLN 99L

LIM-FLEX(68/60.4) • HOMO POLLED (P-1) • HOMO BLACK (T)
02/23/2023 • COLE 99L • LFM2566630

AHCC BARN BURNER B907
CELL ENVISION 7023E
PBRS ZSA ZSA 246Z

COLEMAN PRODUCTION 608
COLE MISS PRODUCTION 104Y
COLE 50K

AHCC WESTWIND W544
LVLS 9066U
TW FIRE N' ICE
PBRS ULL 854U
GAR PRECISION 1680
COLEMAN BLACKCAP 211
COLE FIRST DOWN 46D
JHLL MS BITTERROOT 041B **GE-EPDs**

ACT BW 98
ADJ WW 727
ADJ YW 1191

	CD	BW	WW	YW	MK	CM	SC	DC	YG	CW	RE	MB	\$MI
EPDs	10	1.7	76	122	19	6	1.2	17	-23	59	1.2	.31	66
% RANK	55	70	25	25	95	50	20	10	30	3	2	45	35

UFAT: 0.29 • UREA: 13.94 • UIMF: 2.900

These two full brothers can add a lot of value to your next calf crop. You will be impressed sale day by their muscle expression, clean lines, and center capacity. They are sired by the now deceased CELL Envision 7023E, who continues to sire calves that sort to the top of astute breeding programs across the country. He sired the top three high sellers in our 2023 Bull Sale. Their donor dam is the successful COLE Miss Production 104Y, who was the high-selling female from our 2021 Discovery Sale, purchased by London Limousin Ranch in Arkansas. Numerically they present exceptional growth paired with top-of-the-breed scrotal circumference and carcass merit. Bid with confidence—these herd sire prospects do many things right.



COLE MISS TRAVELER 029X • Dam of Lot 10



COLE GENESIS 98L ET

PUREBRED(93/83.2) • HOMO POLLED (P-2) • HET BLACK (T)
02/22/2023 • COLE 98L • NPM2566623

HUNT CREDENTIALS 37C ET
COLE GENESIS 86G
COLE MISS XRATED 354A

COLE 132T
COLE BEAUTY 276Z
COLE MISS KATY MAY 9105W

HUNT TESTAMENT 40T
JKTW WHISKEY RIVER 985 W
MRL X-RATED 014X
COLE MISS PRODUCTION 874U
LESF ASPHALT 9N
CARROUSELS HAPPY GIRL
HC FINAL TIME 407
COLE 50K

ACT BW
96

ADJ WW
744

ADJ YW
1248

GE-EPDs

	CD	BW	WW	YW	MK	CM	SC	DC	YG	CW	RE	MB	\$MI
EPDs	11	2.3	76	115	29	6	.65	12	-.19	35	.68	.54	74
% RANK	40	75	15	15	15	50	40	70	>95	15	>95	1	1

UFAT: 0.27 • UREA: 13.82 • UIMF: 2.685

Looking for a curve bender? Look no further than this purebred, homozygous polled bull. He boasts a 744-lb. 205-day weight. This explosive growth could be predicted due to his performance EPDs—his weaning weight and yearling weight both rank in the top 15% of the breed. What's more, he ranks in the top 1% for marbling and mainstream terminal index. This combination of presence and numbers project his calves will be a hot commodity. Make no mistake and be sure to have him on the top of your list.



COLE GENESIS 94L ET

LIM-FLEX(68/60.7) • HOMO POLLED (P-2) • HOMO BLACK (T)
02/22/2023 • COLE 94L • LFM2566606

HUNT CREDENTIALS 37C ET
COLE GENESIS 86G
COLE MISS XRATED 354A

COLEMAN TRAVELER 797
COLE MISS TRAVELER 029X
COLE 91L

HUNT TESTAMENT 40T
JKTW WHISKEY RIVER 985 W
MRL X-RATED 014X
COLE MISS PRODUCTION 874U
JAUER 353 TRAVELER 589 27
BT EVERELDA INTENSE 613L
COLE FIRST DOWN 46D
COLE 482D

ACT BW
88

ADJ WW
747

ADJ YW
1225

GE-EPDs

	CD	BW	WW	YW	MK	CM	SC	DC	YG	CW	RE	MB	\$MI
EPDs	11	-.3	68	107	36	7	.6	14	-.12	42	.82	.36	65
% RANK	40	20	55	60	1	35	80	35	60	25	30	35	40

UFAT: 0.52 • UREA: 15.82 • UIMF: 3.515

Here is a true herd sire prospect that will make a great addition to any progressive program. This double-digit calving-ease bull ranks in the top 1% for milk, and has been a standout since birth. This son of COLE Genesis 86G is double homozygous with an impressive set of numerics across the board. His dam is the great 029X cow who has raised her fair share of sale highlights over the years. This stud has all the parts a pieces to sire a high quality calf crop for the winning bidder!



COLE GENESIS 30L

PERCENTAGE(81/72.2) • HOMO POLLED (P-2) • BLACK
02/07/2023 • COLE 30L • NXM2568141



HUNT CREDENTIALS 37C ET
COLE GENESIS 86G
COLE MISS XRATED 354A

COLE ZONE 89Z
COLE MISS ZONE 552C
COLE MISS PRODUCTION 985W

HUNT TESTAMENT 40T
JKTW WHISKEY RIVER 985 W
MRL X-RATED 014X
COLE MISS PRODUCTION 874U
DHVO DEUCE 132R
COLE 02L
COLEMAN PRODUCTION 608
COLE 428P

ACT BW
86

ADJ WW
699

ADJ YW
1139

GE-EPDs

	CD	BW	WW	YW	MK	CM	SC	DC	YG	CW	RE	MB	\$MI
EPDs	11	0	71	109	30	8	.45	9	-19	32	.78	.34	65
% RANK	55	50	15	20	5	45	85	85	40	60	40	45	25

UFAT: 0.25 • UREA: 14.72 • UIMF: 2.270

Here is a bull with a rugged phenotype, capacity, growth and extra muscle expression. Study this bull's well-balanced numerics. He is sired by COLE Genesis 86G, the HUNT Credentials son that was the \$40,000 top seller in the 2020 Coleman Limousin Bull Sale. His dam is a maternal patterned COLE Zone 89Z daughter that has done a great job. COLE Genesis 30L excels in many traits that indicate his ability to sire a fantastic set of replacements. Bid with confidence.



COLE GENESIS 86G • Sire of Lots 9, 10 & 11



COLE FORTUNE 12F • Sire of Lot 12



WULFS GENIUS 5293G • Sire of Lot 13



Lot 13

12 **COLE FORTUNE 90L**
 PERCENTAGE(80/70.7) • HOMO POLLED (P-3) • HET BLACK (T)
 02/20/2023 • COLE 90L • NXM2568083

COLE CADILLAC 05C	ROMN TUFF ENUFF 103T	ACT BW
COLE FORTUNE 12F	COLE MISS XRATED 354A	66
COLE MISS AUSTIN 3157A	AHCC XPENSE ACCOUNT X516	
	COLE MISS TRAVELER 015X	ADJ WW
	COLE ARCHITECT 08A	733
COLE EXPLORER 22E	COLE MISS WINDFALL 126Y	ADJ YW
COLE MISS EXPLORER 1087J	MAGS AVIATOR	1148
CELL 7059E	LVLS ZABEL 9078Z	%GE-EPDs

	CD	BW	WW	YW	MK	CM	SC	DC	YG	CW	RE	MB	\$MI
EPDs	14	-2.6	71	112	26	9	.03	10	-.11	33	.71	.11	56
% RANK	20	20	15	15	20	25	>95	65	55	60	50	80	65

UFAT: 0.23 • UREA: 17.08 • UIMF: 2.205
 Here is the heifer-safe herd sire prospect you have been scouting for. He posts a 14 calving ease EPD and a -2.6 birth weight EPD, both ranking in the top 20% of the breed. His sire, COLE Fortune 12F, needs no introduction to this offering. He is our go-to herd sire and continuously produces standout progeny. His dam is COLE Miss Explorer 1087J, a daughter of Explorer and first calf heifer. COLE Fortune 90L can be utilized in a variety of different ways with the same outstanding results.

13 **COLE GENIUS 37L**
 PERCENTAGE(80/71.5) • HOMO POLLED (P-3) • HOMO BLACK (P-2)
 02/09/2023 • COLE 37L • NXM2568146

WULFS COBRA 2662C	WULFS XTRACTOR X233X	ACT BW
WULFS GENIUS 5293G	MISS WULFETTE 2662Z	88
WULFS CHARISMA 5293C	WULFS ZOUAVE 8438Z	
	WULFS ZESHULIA 2631Z	ADJ WW
	MAGS WINSTON	701
MAGS ZODIAC	MAGS XANTHOUS	ADJ YW
COLE MISS ZODIAC 6108D	COLE 132T	1155
COLE2129Z	COLE MISS PRODUCTION 9159-EPDs	

	CD	BW	WW	YW	MK	CM	SC	DC	YG	CW	RE	MB	\$MI
EPDs	10	1.3	78	121	23	7	.4	14	-.22	49	.87	-.06	53
% RANK	70	70	10	10	45	60	85	15	35	20	30	95	80

UFAT: 0.23 • UREA: 14.36 • UIMF: 2.140
 If you like long-bodied, heavily muscled, functionally correct cattle that are double homozygous, then watch for this exceptional son of Wulfs Genius 5293G. His paternal influence is strong and fits the mold breeder's search for in a herd bull. His dam is sired by MAGS Zodiac and has done a great job raising exceptional progeny year in and year out. Take note of his top 10% ranking for weaning weight and yearling weight and top 15% rank for docility. We predict COLE Genius 37L will produce highly marketable calves.



COLE HOMERUN 51H ET • Sire of Lot 14



Lot 15



Lot 14



AHCC EASY RIDER 5594E • Sire of Lot 15



COLE HOMERUN 73L

LIM-FLEX(62/54.8) • HOMO POLLED (P-1) • HOMO BLACK (T)
02/17/2023 • COLE 73L • LFM2568177

CELL ENVISION 7023E
COLE HOMERUN 51H ET
COLE MISS XRATED 354A

COLEMAN BRAVO 6313
COLE MISS BRAVO 998G
COLE MISS TOOLBOX 964W

AHCC BARN BURNER B907
PBRS ZSA ZSA 246Z
MRL X-RATED 014X
COLE MISS PRODUCTION 874U
COLEMAN CHARLO 0256
COLEMAN DONNA 714
COLE TOOLBOX 89T
HC CRYSTAL 201

ACT BW
96
ADJ WW
640
ADJ YW
1105

	CD	BW	WW	YW	MK	CM	SC	DC	YG	CW	RE	MB	\$MI
EPDs	11	1.8	67	104	23	6	1.25	14	-26	31	.95	.13	57
% RANK	40	70	60	65	70	50	20	35	25	65	15	80	80

UFAT: 0.22 • UREA: 14.52 • UIMF: 2.340

Study this son of the \$40,000 COLE Homerun 51H, the top-selling bull in our 2021 Bull Sale. Homerun is now covering the pastures at Linhart Limousin in Iowa. Study this bull's royal pedigree. This sire is flawless at the ground—big-footed, relaxed in his pasterns, long-striding and one that hits you hard when in motion. Back to Coleman Bravo on the dam side, 73L posts an impressive EPD profile with top 25% rankings or better for scrotal, yield grade and ribeye area.



COLE EASY RIDER 38L

LIM-FLEX(65/57.7) • HOMO POLLED (P-1) • HOMO BLACK (P-1)
02/09/2023 • COLE 38L • LFM2568147

ELMW ALFALFA 103B
AHCC EASY RIDER 5594E
AHCC MISS Y AXIS C5594 ET

COLE ARCHITECT 08A
COLE MISS ARCHITECT 767E
COLE MISS PRODUCTION 888U

TMCK ALFALFA 35X
ELMW WAIT-A-BIT 4W
MAGS Y-AXIS
AHCC DAKOTA LUVLY R595
MRL X-RATED 014X
COLE MISS LODESTAR 826U
COLEMAN PRODUCTION 608
COLE 471P

ACT BW
88
ADJ WW
776
ADJ YW
1328

	CD	BW	WW	YW	MK	CM	SC	DC	YG	CW	RE	MB	\$MI
EPDs	8	2.7	102	160	16	7	.95	14	-22	59	1.25	.27	73
% RANK	85	90	1	1	>95	35	50	35	35	3	2	55	10

UFAT: 0.34 • UREA: 14.66 • UIMF: 3.360

COLE Easy Rider 38L combines a fresh pedigree with a fantastic phenotype guaranteed to catch your eye. His sire, AHCC Easy Rider 5594E is an AI sire gaining in popularity. On paper, 38L does a lot of things right. He ranks in the top 1% of the breed for weaning weight and yearling weight, top 2% for ribeye area and top 3% for carcass weight. His dam is a young daughter of COLE Architect 767E who is quickly sorting her way to the top.



16 **COLE EASY RIDER 50L**
 LIM-FLEX(65/58.5) • HET POLLED (T) • HOMO BLACK (T)
 02/13/2023 • COLE 50L • LFM2568157

ELMW ALFALFA 103B AHCC EASY RIDER 5594E AHCC MISS Y AXIS C5594 ET	TMCK ALFALFA 35X ELMW WAIT-A-BIT 4W MAGS Y-AXIS AHCC DAKOTA LUVLY R595 MRL X-RATED 014X COLE MISS LODESTAR 826U COLEMAN PRODUCTION 608 ANLC KELLY 0769K	ACT BW 86
COLE ARCHITECT 08A COLE MISS ARCHITECT 811F COLE MISS PRODUCTION2105Z		ADJ WW 796
		ADJ YW 1360

	CD	BW	WW	YW	MK	CM	SC	DC	YG	CW	RE	MB	\$MI
EPDs	11	1.6	102	160	17	8	1.05	15	-18	58	1.15	.32	74
% RANK	40	65	1	1	>95	20	35	20	40	3	4	40	10

UFAT: 0.42 • UREA: 16.74 • UIMF: 2.450
 Here is another big-time growth, AHCC Easy Rider 5594E son! COLE Easy Rider 50L comes to you with an alluring phenotype and exceptional growth and carcass merit. His dam, COLE Miss Architect 811F, is a daughter of COLE Architect 08A. Note, he ranks in the top 1% for both weaning weight and yearling weight. He also boasts a top 3% ranking for carcass weight and top 4% rank for ribeye area. Bid with confidence.

17 **COLE EASY RIDER 11L**
 LIM-FLEX(66/58.8) • HOMO POLLED (P-1) • HET BLACK (T)
 01/23/2023 • COLE 11L • LFM2568071

ELMW ALFALFA 103B AHCC EASY RIDER 5594E AHCC MISS Y AXIS C5594 ET	TMCK ALFALFA 35X ELMW WAIT-A-BIT 4W MAGS Y-AXIS AHCC DAKOTA LUVLY R595 ROMN TUFF ENUFF 103T COLE MISS XRATED 354A MAGS AVIATOR COLE MISS ARCHITECT 7118E	ACT BW 66
COLE CADILLAC 05C COLE MISS CADILLAC 1003J COLE MISS AVIATOR 961G		ADJ WW 733
		ADJ YW 1187

	CD	BW	WW	YW	MK	CM	SC	DC	YG	CW	RE	MB	\$MI
EPDs	12	-1.3	81	124	22	9	.32	13	-13	30	.79	.5	74
% RANK	30	10	15	20	80	15	95	50	55	65	30	15	10

UFAT: 0.50 • UREA: 15.42 • UIMF: 3.315
 If you're looking for a production oriented bull, look no further than COLE Easy Rider 11L. This son of AHCC Easy Rider 5594E boasts an impressive set of numerics. He pairs outstanding maternal traits with good growth and breed leading carcass merit. Note, he ranks in the top 10% for birth weight and mainstream terminal index, top 15% for weaning weight, calving ease maternal and marbling and top 20% for yearling weight. Bid with confidence.

WATCH AND BID ONLINE



BID LIVE on the internet at DVAuction.com
 Register at DVAuction.com one day prior to the sale.

18 COLE EARNING POWER 24L

PUREBRED(95/78.5) • HET POLLED (T) • HOMO BLACK (T)
02/01/2023 • COLE 24L • NPM2568106

AHCC EARNING POWER 900E ET
COLE EARNING POWER 82H
COLE MISS XRATED 553C

MAGS ANCHOR
LVLS 9066U
MRL X-RATED 014X
COLE MISS LODESTAR 821U
AHCC BARN BURNER B907
PBRS ZSA ZSA 246Z
ROMN TUFF ENUFF 103T
COLE MISS XRATED 352A

ACT BW
70
ADJ WW
689
ADJ YW
1139

CELL ENVISION 7023E
COLE MISS ENVISION 099H
COLE MISS TUFF ENUFF 512C

	CD	BW	WW	YW	MK	CM	SC	DC	YG	CW	RE	MB	\$MI
EPDs	16	-1.8	73	113	28	11	1.68	14	-26	36	.96	.23	63
% RANK	10	10	20	15	20	2	2	40	>95	15	70	10	10

UFAT: 0.30 • UREA: 14.80 • UIMF: 3.760

Heifer bull! COLE Earning Power 24L is a true curve bender. He is heifer safe, ranking in the top 10% for both calving ease, birth weight, marbling and mainstream terminal index. As if that isn't impressive enough, he also boasts top 2% ranks for both calving ease maternal and scrotal, top 15% for yearling weight and top 20% for weaning weight. Note his capacity, growth and extra muscle expression. Don't miss your opportunity to own this full package bull!



19 COLE EARNING POWER 09L

PERCENTAGE(82/70.8) • HOMO POLLED (P-2) • HET BLACK (T)
01/21/2023 • COLE 9L • NXM2568102

AHCC EARNING POWER 900E ET
COLE EARNING POWER 82H
COLE MISS XRATED 553C

MAGS ANCHOR
LVLS 9066U
MRL X-RATED 014X
COLE MISS LODESTAR 821U
MRL X-RATED 014X
COLE MISS LODESTAR 826U
COLEMAN TRAVELER 797
COLE 91L

ACT BW
94
ADJ WW
793
ADJ YW
1262

	CD	BW	WW	YW	MK	CM	SC	DC	YG	CW	RE	MB	\$MI
EPDs	10	1.9	87	132	26	6	1.45	12	-23	40	1	.18	65
% RANK	70	80	2	3	20	75	10	30	35	40	20	70	30

UFAT: 0.25 • UREA: 14.78 • UIMF: 2.685

Be sure not to overlook this wide-bodied, fast-growing, thick-ended individual. He posted a 205-day weight of 793 lbs. He is sired by COLE Earning Power 82H, who consistently sires progeny that make their way to the top. His dam is another highly productive and maternal COLE Architect 033H daughter. This herd sire comes with an impressive EPD profile, highlighted with top 2% and 3% weaning and yearling weights. Don't miss out, add this sire to your bullpen to create highly marketable calves.



20 COLE EARNING POWER 10L

PERCENTAGE(79/67.7) • HOMO POLLED (P-2) • HOMO BLACK (T)
01/22/2023 • COLE 10L • NXM2568103

AHCC EARNING POWER 900E ET
COLE EARNING POWER 82H
COLE MISS XRATED 553C

MAGS ANCHOR
LVLS 9066U
MRL X-RATED 014X
COLE MISS LODESTAR 821U
AHCC BARN BURNER B907
PBRS ZSA ZSA 246Z
COLEMAN REGIS 904
COLE MISS BLACK TANK 753T

ACT BW
96
ADJ WW
737
ADJ YW
1257

	CD	BW	WW	YW	MK	CM	SC	DC	YG	CW	RE	MB	\$MI
EPDs	13	1.3	85	134	24	8	1.82	14	-23	40	.9	.33	70
% RANK	30	70	2	3	40	45	1	15	35	40	30	50	15

UFAT: 0.31 • UREA: 13.8 • UIMF: 3.130

Attention Cattlemen! This COLE Earning Power 82H son comes to you in a heavily muscled, double homozygous package. His dam is sired by CELL Envision 7023E. COLE Earning Power 10L totes an impressive EPD package. He ranks in the top 1% for scrotal, 2% for weaning weight and top 3% for yearling weight. This bull is ready to go to work.





COLE GENESIS 121L

PUREBRED(87/76.7) • HOMO POLLED (P-2) • HOMO BLACK (T)
03/01/2023 • COLE 121L • NPM2568203

HUNT CREDENTIALS 37C ET
COLE GENESIS 86G
COLE MISS XRATED 354A

AHCC BIG WIND B904
COLE MISS BIG WIND 652D
COLE MISS AUSTIN 335A

HUNT TESTAMENT 40T
JKTW WHISKEY RIVER 985 W
MRL X-RATED 014X
COLE MISS PRODUCTION 874U
AHCC WESTWIND W544
LVLS 9066U
AHCC XPENSE ACCOUNT X516
COLE 056X

ACT BW
80
ADJ WW
773
ADJ YW
1231

	CD	BW	WW	YW	MK	CM	SC	DC	YG	CW	RE	MB	\$MI
EPDs	13	-1.1	66	107	34	8	.4	14	-.18	38	.7	.35	64
% RANK	20	15	45	30	2	25	70	40	>95	10	95	2	4

UFAT: 0.33 • UREA: 13.26 • UIMF: 3.230

This herd sire prospect brings the carcass merit many breeders strive for. Here is a big, stout, wide-made, ruggedly designed purebred that comes to us in a heavyweight double homozygous package. He is a highly usable and versatile COLE Genesis 86G son. Study his numbers and find exceptional numerics across the board, highlighted by a top 2% rank for marbling. Bid with confidence, this herd sire prospect does a lot right.



COLE GENESIS 129L

PERCENTAGE(81/71.4) • HOMO POLLED (T) • HOMO BLACK (T)
03/05/2023 • COLE 129L • NXM2568206

HUNT CREDENTIALS 37C ET
COLE GENESIS 86G
COLE MISS XRATED 354A

COLE WINDFALL 144W
COLE MISS WINDFALL 257Z
COLE MISS FIRST DOWN 684S

HUNT TESTAMENT 40T
JKTW WHISKEY RIVER 985 W
MRL X-RATED 014X
COLE MISS PRODUCTION 874U
COLEMAN PRODUCTION 608
COLE MISS FIRSTDOWN 6162S
COLE FIRST DOWN 46D
COLE 148F

ACT BW
78
ADJ WW
732
ADJ YW
1203

	CD	BW	WW	YW	MK	CM	SC	DC	YG	CW	RE	MB	\$MI
EPDs	13	-1	65	102	39	9	.7	14	-.2	42	.87	.47	68
% RANK	30	35	30	25	1	25	50	15	40	35	30	25	15

UFAT: 0.26 • UREA: 12.84 • UIMF: 2.860



COLE GENESIS 77L ET

LIM-FLEX(68/61.2) • HOMO POLLED (P-2) • HET BLACK (T)
02/18/2023 • COLE 77L • LFM2566628

HUNT CREDENTIALS 37C ET
COLE GENESIS 86G
COLE MISS XRATED 354A

COLEMAN PRODUCTION 608
COLE MISS PRODUCTION 104Y
COLE 50K

HUNT TESTAMENT 40T
JKTW WHISKEY RIVER 985 W
MRL X-RATED 014X
COLE MISS PRODUCTION 874U
GAR PRECISION 1680
COLEMAN BLACKCAP 211
COLE FIRST DOWN 46D
JHLL MS BITTERROOT 041B **GE-EPDs**

ACT BW
86
ADJ WW
689
ADJ YW
1118

	CD	BW	WW	YW	MK	CM	SC	DC	YG	CW	RE	MB	\$MI
EPDs	14	-.9	68	107	30	10	.35	12	-.04	42	.65	.64	74
% RANK	10	15	55	60	15	5	95	65	80	25	55	4	10

UFAT: 0.48 • UREA: 11.44 • UIMF: 3.565

A heifer bull deluxe sired by COLE Genesis 86G. Besides his phenotypic advantages on paper, he presents a negative birth weight figure paired with a top 10% calving ease rank. His dam is a highly productive daughter of Coleman Production 608. His calves will be hot commodities. Don't miss this homozygous polled herd sire.



COLE GENESIS 74L

PERCENTAGE(79/70.7) • HOMO POLLED (P-2) • HOMO BLACK (T)
02/17/2023 • COLE 74L • NXM2568178

HUNT CREDENTIALS 37C ET
COLE GENESIS 86G
COLE MISS XRATED 354A

TMCK CASH FLOW 247C
COLE BEAUTY 927G ET
COLE BEAUTY 276Z

HUNT TESTAMENT 40T
JKTW WHISKEY RIVER 985 W
MRL X-RATED 014X
COLE MISS PRODUCTION 874U
MAGS ALI
TMCK NINA 17X
COLE 132T
COLE MISS KATYMAY 9105W

ACT BW
94
ADJ WW
744
ADJ YW
1247

	CD	BW	WW	YW	MK	CM	SC	DC	YG	CW	RE	MB	\$MI
EPDs	12	1.4	78	124	32	8	.9	15	-.07	43	.65	.63	77
% RANK	45	75	10	10	2	45	35	10	65	35	60	10	3

UFAT: 0.41 • UREA: 12.32 • UIMF: 5.460

25

COLE GENESIS 27L

LIM-FLEX(68/60.7) • HOMO POLLED (P-2) • HET BLACK (T)
02/04/2023 • COLE 27L • LFM2568140

HUNT CREDENTIALS 37C ET
COLE GENESIS 86G
COLE MISS XRATED 354A

COLEMAN PRODUCTION 608
COLE MISS PRODUCT 1167Y
COLE 110T

HUNT TESTAMENT 40T
JKTW WHISKEY RIVER 985 W
MRL X-RATED 014X
COLE MISS PRODUCTION 874U
GAR PRECISION 1680
COLEMAN BLACKCAP 211
COLE MAGNUM 15M
COLE 50K

ACT BW
70
ADJ WW
665
ADJ YW
1062

	CD	BW	WW	YW	MK	CM	SC	DC	YG	CW	RE	MB	\$MI
EPDs	18	-2.8	62	90	29	12	.5	14	-.07	29	.43	.48	67
% RANK	1	2	80	90	20	1	85	35	70	70	85	15	30

UFAT: 0.32 • UREA: 10.76 • UIMF: 4.105

26

COLE GENESIS 52L

PERCENTAGE(81/71.4) • HOMO POLLED (P-2) • HET BLACK (T)
02/13/2023 • COLE 52L • NXM2568110

HUNT CREDENTIALS 37C ET
COLE GENESIS 86G
COLE MISS XRATED 354A

CELL ENVISION 7023E
COLE MISS ENVISION 1022J
COLE MISS JUNEAU 5120C

HUNT TESTAMENT 40T
JKTW WHISKEY RIVER 985 W
MRL X-RATED 014X
COLE MISS PRODUCTION 874U
AHCC BARN BURNER B907
PBRS ZSA ZSA 246Z
COLE JUNEAU 60A
COLE MISS AUSTIN 3135A

ACT BW
76
ADJ WW
681
ADJ YW
1143

	CD	BW	WW	YW	MK	CM	SC	DC	YG	CW	RE	MB	\$MI
EPDs	14	-1.3	65	108	28	9	1.1	15	-.18	33	.73	.55	71
% RANK	20	30	30	20	10	25	20	10	40	60	50	20	10

UFAT: 0.39 • UREA: 11.74 • UIMF: 5.040

27

COLE HOMERUN 85L

LIM-FLEX(65/57) • HOMO POLLED (P-3) • HET BLACK (T)
02/19/2023 • COLE 85L • LFM2568184

CELL ENVISION 7023E
COLE HOMERUN 51H ET
COLE MISS XRATED 354A

COLEMAN VENTURE 403
COLE MISS VENTURE 7105E
COLE MISS XRATED 388A

AHCC BARN BURNER B907
PBRS ZSA ZSA 246Z
MRL X-RATED 014X
COLE MISS PRODUCTION 874U
CONNEALY CAPITALIST 028
COLEMAN DONNA 714
MRL X-RATED 014X
COLE 28R

ACT BW
92
ADJ WW
740
ADJ YW
1186

	CD	BW	WW	YW	MK	CM	SC	DC	YG	CW	RE	MB	\$MI
EPDs	11	.6	78	117	22	6	1.35	11	-.21	35	.92	.28	65
% RANK	40	40	20	35	80	50	15	80	35	50	20	50	40

UFAT: 0.56 • UREA: 13.96 • UIMF: 3.150

If you came looking for an athletic, great-footed, homozygous polled, heavily muscled featured bull that will catch the eye of every person that enters his pen, then COLE Homerun 85L is the herd sire prospect for you. Admire this bull for his obvious phenotypic advantages, but also note his well-balanced profile. He will do big things for your next calf crop.



28

COLE HOMERUN 63L

LIM-FLEX(65/57.3) • HOMO POLLED (P-1) • HET BLACK (T)
02/15/2023 • COLE 63L • LFM2568167

CELL ENVISION 7023E
COLE HOMERUN 51H ET
COLE MISS XRATED 354A

COLEMAN BRAVO 6313
COLE MISS BRAVO 988G
COLE MISS ZONE 527C

AHCC BARN BURNER B907
PBRS ZSA ZSA 246Z
MRL X-RATED 014X
COLE MISS PRODUCTION 874U
COLEMAN CHARLO 0256
COLEMAN DONNA 714
COLE ZONE 89Z
COLE MISS FINALTIME 961W

ACT BW
86
ADJ WW
686
ADJ YW
1187

	CD	BW	WW	YW	MK	CM	SC	DC	YG	CW	RE	MB	\$MI
EPDs	13	.6	74	121	24	7	1.4	10	-.17	45	.79	.26	63
% RANK	20	40	35	25	60	35	10	85	45	20	30	55	50

UFAT: 0.37 • UREA: 11.88 • UIMF: 5.140

This bull has an absolute stand-out phenotype that deserves some serious attention. Study his impressive rib-shape, level top and hind quarter dimension. His dam is a daughter of the great Coleman Bravo 6313. He is a son of the \$40,000 COLE Homerun 51H, the top-selling bull in our 2021 Bull Sale. Homerun is now covering the pastures at Linhart Limousin in Iowa. This homozygous polled bull should be put at the top of your list.





COLE HOMERUN 51H ET • Sire of Lots 29, 30 & 31



COLE HOMERUN 103L

LIM-FLEX(65/56.6) • HOMO POLLED (T) • HOMO BLACK (P-1)
02/24/2023 • COLE 103L • LFM2568194

CELL ENVISION 7023E
COLE HOMERUN 51H ET
COLE MISS XRATED 354A

AHCC BARN BURNER B907
PBRS ZSA ZSA 246Z
MRL X-RATED 014X
COLE MISS PRODUCTION 874U

ACT BW
86

ADJ WW
713

CONNEALY CONSENSUS 7229
COLE MISS CONSENSUS 345A
COLE 61R

CONNEALY CONSENSUS
BLUE LILLY OF CONANGA 16
COLE FIRST DOWN 46D
COLE 44F

ADJ YW
1171

	CD	BW	WW	YW	MK	CM	SC	DC	YG	CW	RE	MB	\$MI
EPDs	11	1.1	72	112	26	6	1.4	10	-14	40	.78	.39	67
% RANK	40	55	40	45	40	50	10	85	55	35	35	30	30

UFAT: 0.35 • UREA: 12.16 • UIMF: 3.115



COLE HOMERUN 43L

PUREBRED(90/79.6) • HET POLLED (T) • HET BLACK (T)
02/11/2023 • COLE 43L • NPM2568152

CELL ENVISION 7023E
COLE HOMERUN 51H ET
COLE MISS XRATED 354A

AHCC BARN BURNER B907
PBRS ZSA ZSA 246Z
MRL X-RATED 014X
COLE MISS PRODUCTION 874U
JCL LODESTAR 27L

ACT BW
96

ADJ WW
734

RUNL STETSON 850S
COLE MISS STETSON 1107Y
COLE 50K

RUNL 72L
COLE FIRST DOWN 46D
JHLL MS BITTERROOT 041B

ADJ YW
1168

	CD	BW	WW	YW	MK	CM	SC	DC	YG	CW	RE	MB	\$MI
EPDs	9	1.9	72	110	25	6	1.05	12	-42	33	1.22	.2	62
% RANK	60	65	25	20	45	50	10	70	65	20	20	10	10

UFAT: 0.24 • UREA: 14.20 • UIMF: 3.020



COLE HOMERUN 48L

LIM-FLEX(65/56.9) • HOMO POLLED (P-2) • HOMO BLACK (P-1)
02/12/2023 • COLE 48L • LFM2568155

CELL ENVISION 7023E
COLE HOMERUN 51H ET
COLE MISS XRATED 354A

AHCC BARN BURNER B907
PBRS ZSA ZSA 246Z
MRL X-RATED 014X
COLE MISS PRODUCTION 874U
GAR PRECISION 1680

ACT BW
94

ADJ WW
757

COLEMAN PRODUCTION 608
COLE MISS PRODUCT 3126A
COLE MISS FIRSTDOWN 9114W

COLEMAN BLACKCAP 211
COLE FIRST DOWN 46D
COLE 25R

ADJ YW
1258

	CD	BW	WW	YW	MK	CM	SC	DC	YG	CW	RE	MB	\$MI
EPDs	10	1.7	78	124	24	6	1	15	-13	45	.83	.48	72
% RANK	55	70	20	20	60	50	35	20	55	20	25	15	15

UFAT: 0.39 • UREA: 13.32 • UIMF: 4.025



Lot 32



COLE EARNING POWER 66L

PERCENTAGE(84/72.2) • HET POLLED (T) • HOMO BLACK (P-2)
02/16/2023 • COLE 66L • NXM2568170

MAGS ANCHOR
AHCC EARNING POWER 900E ET
LVLS 9066U

LH WAR HERO 195W
MGS XIPHOPAGOUS
LVLS FARMER JOHN 7428P
LVLS9066R

ACT BW
94

ADJ WW
795

SYES CURTAIN CALL 466C
COLE MISS CURTAIN CALL 916G
COLE MISS BIG WIND 668D

WULFS XCLUSIVE 2458X
MISS SYES FRIENDLY 465Z
AHCC BIG WIND B904
COLE MISS THUNDER 3112A

ADJ YW
1274

	CD	BW	WW	YW	MK	CM	SC	DC	YG	CW	RE	MB	\$MI
EPDs	11	2.3	78	133	35	7	1.75	14	-2	51	.86	.34	68
% RANK	55	85	10	3	1	60	2	15	40	20	35	45	20

UFAT: 0.21 • UREA: 14.70 • UIMF: 2.245

Stout-made, wide-topped, and rugged designed is this son of AHCC Earning Power 900E who gives you a great look. His dam is a maternal, hard-working SYES Curtain Call 466C daughter. On paper, COLE Earning Power 66L has good growth paired with well-balanced carcass traits. He ranks in the top 1% for milk, top 2% for scrotal, top 3% for yearling weight and top 10% for weaning weight. If you are searching for a bull that will improve growth and carcass merit look no further than this guy.

33 COLE EARNING POWER 67L

LIM-FLEX(65/55.7) • HOMO POLLED (P-1) • HET BLACK (T)
02/16/2023 • COLE 67L • LFM2568171

MAGS ANCHOR
AHCC EARNING POWER 900E ET
LVLS 9066U

CONNELY THUNDER
COLE MISS THUNDER 981G ET
COLE 141L

LH WAR HERO 195W
MGS XIPHOPAGOUS
LVLS FARMER JOHN 7428P
LVLS9066R
BALDRIDGE KABOOM K243 KCF
PARKA OF CONANGA 241
COLE FIRST DOWN 46D
COLE 148F

ACT BW
84
ADJ WW
698
ADJ YW
1095

	CD	BW	WW	YW	MK	CM	SC	DC	YG	CW	RE	MB	\$MI
EPDs	12	1.4	68	110	29	9	2.05	15	-.21	45	.86	.4	67
% RANK	30	60	55	50	20	15	1	20	35	20	25	25	30

UFAT: 0.22 • UREA: 14.10 • UIMF: 2.855

Be sure not to overlook this wide-bodied, thick-ended individual. He posted a 205-day-weight of 698. His sire, AHCC Earning Power 900E, has proven to transmit progeny that pair big data with stand-out phenotypes. This herd sire comes with a well-balanced EPD profile, paired with a great look. Take note, he ranks in the top 1% for scrotal. Don't miss out, add this homozygous polled, Lim-Flex sire to your arsenal.



34 COLE EARNING POWER 40L

LIM-FLEX(65/55.7) • HET POLLED (T) • HOMO BLACK (T)
02/10/2023 • COLE 40L • LFM2568149

MAGS ANCHOR
AHCC EARNING POWER 900E ET
LVLS 9066U

CONNELY THUNDER
COLE MISS THUNDER 236Z
COLE 110R

LH WAR HERO 195W
MGS XIPHOPAGOUS
LVLS FARMER JOHN 7428P
LVLS9066R
BALDRIDGE KABOOM K243 KCF
PARKA OF CONANGA 241
ROMN MADE TO ORDER
COLE 19L

ACT BW
88
ADJ WW
691
ADJ YW
1099

	CD	BW	WW	YW	MK	CM	SC	DC	YG	CW	RE	MB	\$MI
EPDs	11	1.5	65	105	34	9	2.05	17	-.19	45	.76	.33	63
% RANK	40	65	70	65	2	15	1	10	40	20	35	40	50

UFAT: 0.17 • UREA: 11.98 • UIMF: 1.965

35 COLE EARNING POWER 35L

LIM-FLEX(65/55.7) • HOMO POLLED (P-1) • HET BLACK (T)
02/08/2023 • COLE 35L • LFM2568145

MAGS ANCHOR
AHCC EARNING POWER 900E ET
LVLS 9066U

CONNELY THUNDER
COLE MISS THUNDER 987G ET
COLE 4107P

LH WAR HERO 195W
MGS XIPHOPAGOUS
LVLS FARMER JOHN 7428P
LVLS9066R
BALDRIDGE KABOOM K243 KCF
PARKA OF CONANGA 241
LVLS 842L
COLE 141L

ACT BW
94
ADJ WW
719
ADJ YW
1127

	CD	BW	WW	YW	MK	CM	SC	DC	YG	CW	RE	MB	\$MI
EPDs	10	2.2	75	119	27	9	2.23	13	-.13	48	.72	.32	65
% RANK	55	80	30	30	30	15	1	50	55	15	40	40	35

UFAT: 0.18 • UREA: 12.94 • UIMF: 2.845

36 COLE GENESIS 102L

LIM-FLEX(73/64.7) • HOMO POLLED (P-2) • HOMO BLACK (T)
02/24/2023 • COLE 102L • LFM2568193

HUNT CREDENTIALS 37C ET
COLE GENESIS 86G
COLE MISS XRATED 354A

TMCK CASH FLOW 247C
COLE MISS CASHFLOW 921G
COLE MISS XRATED 361A

HUNT TESTAMENT 40T
JKTW WHISKEY RIVER 985 W
MRL X-RATED 014X
COLE MISS PRODUCTION 874U
MAGS ALI
TMCK NINA 17X
MRL X-RATED 014X
COLE MISS PRODUCTION 845U

ACT BW
94
ADJ WW
700
ADJ YW
1116

	CD	BW	WW	YW	MK	CM	SC	DC	YG	CW	RE	MB	\$MI
EPDs	12	1.2	73	112	32	8	.95	16	-.02	43	.54	.42	68
% RANK	30	55	35	45	5	20	50	15	85	25	70	25	30

UFAT: 0.35 • UREA: 11.66 • UIMF: 2.725

37 COLE GENESIS 97L

PERCENTAGE(81/71.8) • HOMO POLLED (T) • HET BLACK (T)
02/22/2023 • COLE 97L • NXM2568191

HUNT CREDENTIALS 37C ET
COLE GENESIS 86G
COLE MISS XRATED 354A

COLE ZONE 89Z
COLE MISS ZONE 665D
COLE MISS PRODUCTION 183Y

HUNT TESTAMENT 40T
JKTW WHISKEY RIVER 985 W
MRL X-RATED 014X
COLE MISS PRODUCTION 874U
DHVO DEUCE 132R
COLE 02L
COLEMAN PRODUCTION 608
COLE MISS PUREPOWER 792T

ACT BW
80
ADJ WW
678
ADJ YW
1096

	CD	BW	WW	YW	MK	CM	SC	DC	YG	CW	RE	MB	\$MI
EPDs	17	-1.9	61	90	31	11	.55	13	-.15	28	.72	.48	67
% RANK	4	25	40	40	3	3	75	25	50	70	50	25	20

UFAT: 0.40 • UREA: 11.82 • UIMF: 4.105



38 COLE EARNING POWER 03L

LIM-FLEX(71/61.2) • HOMO POLLED (P-2) • HET BLACK (T)
01/16/2023 • COLE 3L • LFM2568100

AHCC EARNING POWER 900E ET	MAGS ANCHOR	ACT BW
COLE EARNING POWER 82H	LVLS 9066U	78
COLE MISS XRATED 553C	MRL X-RATED 014X	ADJ WW
	COLE MISS LODESTAR 821U	691
MAGS FIRESTONE 218F	MAGS APPLE JACK	ADJ YW
COLE MISS FIRESTONE 077H	MAGS DAYSTAR	1084
COLE MISS PRODUCTION 522C ET	COLEMAN PRODUCTION 608	
	COLE 141L	

	CD	BW	WW	YW	MK	CM	SC	DC	YG	CW	RE	MB	\$MI
EPDs	15	-.3	69	105	27	9	1.15	12	-.18	34	.71	.3	63
% RANK	5	20	50	65	30	15	30	65	40	55	45	45	50

UFAT: 0.23 • UREA: 12.58 • UIMF: 3.10

If you like heifer-safe, long-bodied, heavily muscled, functionally correct cattle that are homozygous polled, then watch for this exceptional son of COLE Earning Power 82H. His dam is a young female that exhibits the longevity this breed is famous for. On paper, he ranks in the top 5% for calving ease and posts exceptional maternal figures without sacrificing growth and performance. These traits indicate his ability to sire a fantastic set of replacements. Bid with confidence.

39 COLE FORTUNE 28L

LIM-FLEX(73/63.6) • HOMO POLLED (P-2) • HOMO BLACK (T)
02/05/2023 • COLE 28L • LFM2568079

COLE CADILLAC 05C	ROMN TUFF ENUFF 103T	ACT BW
COLE FORTUNE 12F	COLE MISS XRATED 354A	92
COLE MISS AUSTIN 3157A	AHCC XPENSE ACCOUNT X516	ADJ WW
	COLE MISS TRAVELER 015X	748
AHCC EARNING POWER 900E ET	MAGS ANCHOR	ADJ YW
COLE MISS POWER 1059J	LVLS 9066U	1171
COLE MISS CONSENSUS 365A	CONNEALY CONSENSUS 7229	
	COLE MISS MAGNUM 6103S	

	CD	BW	WW	YW	MK	CM	SC	DC	YG	CW	RE	MB	\$MI
EPDs	10	3.1	78	125	27	8	.62	13	-.15	46	.91	.34	67
% RANK	55	95	20	20	30	20	80	50	50	15	20	40	30

UFAT: 0.27 • UREA: 12.68 • UIMF: 1.80

40 COLE FORTUNE 96L

PERCENTAGE(78/69.2) • HET POLLED (T) • HOMO BLACK (T)
02/22/2023 • COLE 96L • NXM2568190

COLE CADILLAC 05C	ROMN TUFF ENUFF 103T	ACT BW
COLE FORTUNE 12F	COLE MISS XRATED 354A	82
COLE MISS AUSTIN 3157A	AHCC XPENSE ACCOUNT X516	ADJ WW
	COLE MISS TRAVELER 015X	720
AHCC XPENSE ACCOUNT X516	KAJO RESPONDER 120R	ADJ YW
COLE MISS AUSTIN 6120D	AHCC MISS NORHTSTAR R516	1189
COLE MISS PRODUCT 1149Y	COLEMAN PRODUCTION 608	
	COLE 42K	

	CD	BW	WW	YW	MK	CM	SC	DC	YG	CW	RE	MB	\$MI
EPDs	13	-.7	65	109	29	8	-.1	9	-.24	35	.89	.19	59
% RANK	30	40	30	20	10	45	>95	85	30	55	30	70	55

UFAT: 0.30 • UREA: 14.32 • UIMF: 2.155

41 COLE FORTUNE 88L

LIM-FLEX(70/61.8) • HOMO POLLED (P-3) • HOMO BLACK (T)
02/20/2023 • COLE 88L • LFM2568186

COLE CADILLAC 05C	ROMN TUFF ENUFF 103T	ACT BW
COLE FORTUNE 12F	COLE MISS XRATED 354A	94
COLE MISS AUSTIN 3157A	AHCC XPENSE ACCOUNT X516	ADJ WW
	COLE MISS TRAVELER 015X	717
TMCK CASH FLOW 247C	MAGS ALI	ADJ YW
COLE MISS CASHFLOW 943G	TMCK NINA 17X	1206
COLE MISS YOKEL 689D	COLE YOKEL 86Y	
	COLE MISS TRAVELER 011X	

	CD	BW	WW	YW	MK	CM	SC	DC	YG	CW	RE	MB	\$MI
EPDs	10	1	76	129	28	7	.35	13	-.12	45	.87	.16	60
% RANK	55	50	25	15	25	35	95	50	60	20	20	75	65

UFAT: 0.31 • UREA: 12.98 • UIMF: 1.935

42 COLE EASY RIDER 31L

PERCENTAGE(78/65.7) • HOMO POLLED (P-3) • BLACK
02/07/2023 • COLE 31L • NXM2568081

ELMW ALFALFA 103B	TMCK ALFALFA 35X	ACT BW
AHCC EASY RIDER 5594E	ELMW WAIT-A-BIT 4W	66
AHCC MISS Y AXIS C5594 ET	MAGS Y-AXIS	ADJ WW
	AHCC DAKOTA LUVLY R595	708
COLE GENESIS 86G	HUNT CREDENTIALS 37C ET	ADJ YW
COLE MISS GENESIS 1044J	COLE MISS XRATED 354A	1073
COLE MISS BIG WIND 690D	AHCC BIG WIND B904	
	COLE MISS XRATED 306A	

	CD	BW	WW	YW	MK	CM	SC	DC	YG	CW	RE	MB	\$MI
EPDs	12	-1.4	70	104	27	10	.85	12	-.19	26	.7	.48	70
% RANK	45	30	20	25	15	10	40	30	40	75	50	25	15

UFAT: 0.29 • UREA: 13.72 • UIMF: 3.930



COLE GENESIS 14L

PERCENTAGE(82/72.2) • HOMO POLLED (P-2) • HOMO BLACK (T)
01/25/2023 • COLE 14L • NXM2568074

HUNT CREDENTIALS 37C ET
COLE GENESIS 86G
COLE MISS XRATED 354A

HUNT TESTAMENT 40T
JKTW WHISKEY RIVER 985 W
MRL X-RATED 014X
COLE MISS PRODUCTION 874U
MAGS ANCHOR
LVLS 9066U
COLE ARCHITECT 08A
COLE MISS PRODUCTION 2130

ACT BW
66
ADJ WW
642
ADJ YW
1088

AHCC EARNING POWER 900E ET
COLE MISS POWER 1048J
COLE MISS ARCHITECT 658D

	CD	BW	WW	YW	MK	CM	SC	DC	YG	CW	RE	MB	\$MI
EPDs	14	-1.4	69	112	28	10	1.12	17	-.11	44	.74	.64	75
% RANK	20	30	20	15	10	10	20	3	55	30	45	10	5

UFAT: 0.23 • UREA: 12.46 • UIMF: 3.585

If you like performance-oriented, sound-structured, big-bodied, homozygous black, homozygous polled cattle that have a combination of function and numbers, then study this amazing herd sire. This son of COLE Genesis 86G posts 11 EPD figures that rank in the top 30% of the breed or higher. A true standout in the offering that will make an excellent addition to your herd bull arsenal.



Lot 43



COLE GENESIS 47L

LIM-FLEX(75/66.3) • HOMO POLLED (P-2) • HET BLACK (T)
02/12/2023 • COLE 47L • LFM2568154

HUNT CREDENTIALS 37C ET
COLE GENESIS 86G
COLE MISS XRATED 354A

HUNT TESTAMENT 40T
JKTW WHISKEY RIVER 985 W
MRL X-RATED 014X
COLE MISS PRODUCTION 874U
TC ABERDEEN 759
MAGS UAHUKA
COLE ZAM 62Z
COLE MISS PRODUCTION 2130

ACT BW
84
ADJ WW
638
ADJ YW
1154

	CD	BW	WW	YW	MK	CM	SC	DC	YG	CW	RE	MB	\$MI
EPDs	15	-.8	65	104	30	10	.8	17	-.12	40	.69	.52	70
% RANK	5	15	70	65	15	5	60	10	60	35	45	15	20

UFAT: 0.41 • UREA: 12.72 • UIMF: 2.975

The total package. This bull is heavily muscled, homozygous polled, heifer safe and sired by the popular COLE Genesis 86G. Lot 44 ranks in the top 5% of the breed for calving ease and calving ease maternal, top 15% for birth weight, milk and marbling. Opportunity knocks!



Lot 44



COLE GENESIS 58L

LIM-FLEX(71/62.9) • HOMO POLLED (P-2) • HET BLACK (T)
02/15/2023 • COLE 58L • LFM2568164

HUNT CREDENTIALS 37C ET
COLE GENESIS 86G
COLE MISS XRATED 354A

HUNT TESTAMENT 40T
JKTW WHISKEY RIVER 985 W
MRL X-RATED 014X
COLE MISS PRODUCTION 874U
MAGS WINSTON
MAGS XTRA REST
COLEMAN PRODUCTION 608
COLE 84R

ACT BW
92
ADJ WW
672
ADJ YW
1143

	CD	BW	WW	YW	MK	CM	SC	DC	YG	CW	RE	MB	\$MI
EPDs	12	1.4	73	119	28	7	.2	16	.04	42	.4	.43	68
% RANK	30	60	35	30	25	35	>95	15	95	25	90	25	30

UFAT: 0.59 • UREA: 13.88 • UIMF: 3.140

Here is another son of the extremely popular AI sire, COLE Genesis 86G. This sire constantly transmits high-growth, eye-catching progeny that have breed-leading growth and acceptance. Make no mistake and be sure to have this outstanding individual on your short list sale day!



Lot 45



46 COLE GENESIS 65L

PUREBRED(87/77.4) • HOMO POLLED (P-2) • HOMO BLACK (T)
02/16/2023 • COLE 65L • NPM2568169

HUNT CREDENTIALS 37C ET	HUNT TESTAMENT 40T	ACT BW
COLE GENESIS 86G	JKTW WHISKEY RIVER 985 W	94
COLE MISS XRATED 354A	MRL X-RATED 014X	
	COLE MISS PRODUCTION 874U	ADJ WW
AHCC XPENSE ACCOUNT X516	KAJO RESPONDER 120R	631
COLE MISS AUSTIN 7113E	AHCC MISS NORHTSTAR R516	ADJ YW
COLE286Z	COLE 132T	1130
	COLE MISS PRODUCTION 917I	

	CD	BW	WW	YW	MK	CM	SC	DC	YG	CW	RE	MB	\$MI
EPDs	11	1.4	61	104	27	6	.55	15	-.24	30	.82	.53	70
% RANK	40	55	65	35	30	50	55	20	>95	25	90	1	1

UFAT: 0.39 • UREA: 14.90 • UIMF: 2.835

This herd sire prospect is an absolute eye catcher. Stout featured, long-bodied and wide-based. His sire, COLE Genesis 86G, is a popular AI sire known for producing standout progeny that have extra eye appeal. This double homozygous polled, purebred ranks in the top 1% for marbling and mainstream terminal index. He is going to do big things for the winning bidder. Make that be you.



47 COLE EARNING POWER 70L

PUREBRED(90/78.4) • HOMO POLLED (P-1) • HOMO BLACK (T)
02/17/2023 • COLE 70L • NPM2568174

MAGS ANCHOR	LH WAR HERO 195W	ACT BW
AHCC EARNING POWER 900E ET	MGS XIPHOPAGOUS	96
LVLS 9066U	LVLS FARMER JOHN 7428P	
	LVLS9066R	ADJ WW
COLE ZONE 89Z	DHVO DEUCE 132R	668
COLE MISS ZONE 874F	COLE 02L	ADJ YW
COLE MISS STETSON 1107Y	RUNL STETSON 850S	1157
	COLE 50K	

	CD	BW	WW	YW	MK	CM	SC	DC	YG	CW	RE	MB	\$MI
EPDs	10	2.1	74	122	26	8	1.43	12	-.34	39	1.01	.25	65
% RANK	50	70	20	10	35	25	3	70	90	10	65	5	4

UFAT: 0.28 • UREA: 14.52 • UIMF: 2.310

If you like purebred bulls that are heavily muscled, high growth and loaded with marbling, study this own son of AHCC Earning Power 900E, then consider your search over! We think a lot of this performance-oriented, stout-featured, attractive patterned bull and encourage you to study him. Note, he ranks in the top 3% for scrotal, top 4% for mainstream terminal index, top 5% for marbling and top 20% or better for weaning weight and yearling weight.

48 COLE EARNING POWER 02L

PERCENTAGE(76/65.3) • HOMO POLLED (P-2) • HET BLACK (T)
01/14/2023 • COLE 2L • NXM2568099

AHCC EARNING POWER 900E ET	MAGS ANCHOR	ACT BW
COLE EARNING POWER 82H	LVLS 9066U	74
COLE MISS XRATED 553C	MRL X-RATED 014X	
	COLE MISS LODESTAR 821U	ADJ WW
COLE BACKSTAGE 04E	SYES BACKSTAGE 466B	616
COLE MISS BACKSTAGE 0110H	COLE MISS REGIS 540C	ADJ YW
COLE MISS THUNDER 392A	CONNEALY THUNDER	1070
	COLE MISS FIRST DOWN 684S	

	CD	BW	WW	YW	MK	CM	SC	DC	YG	CW	RE	MB	\$MI
EPDs	15	-1.8	58	88	27	10	1.5	11	-.22	22	.7	.2	56
% RANK	15	25	45	45	15	10	4	50	35	85	50	70	65

UFAT: 0.23 • UREA: 11.34 • UIMF: 2.410

49 COLE GAME CHANGER 116L

PERCENTAGE(76/68.3) • HOMO POLLED (P-2) • BLACK
02/28/2023 • COLE 116L • NXM2568200

HUNT CREDENTIALS 37C ET	HUNT TESTAMENT 40T	ACT BW
WZRK GAME CHANGER 4015G	JKTW WHISKEY RIVER 985 W	90
WZRK MISS TUFFENUFF 4015B	ROMN TUFF ENUFF 103T	
	WZRK MISS MTO 0010X	ADJ WW
MAGS CABLE	MAGS APPELSEED	758
BL HOPSCOTCH 044H	MAGS ZEQUIN	ADJ YW
BL FOX TROT 815F	MAGS ZODIAC	1188
	BL U B DO 801U	

	CD	BW	WW	YW	MK	CM	SC	DC	YG	CW	RE	MB	\$MI
EPDs	9	2.4	82	128	36	6	1.49	16	-.09	58	.77	.4	70
% RANK	80	90	3	4	1	75	10	5	60	10	45	35	15

UFAT: 0.39 • UREA: 13.04 • UIMF: 2.275



COLE GAME CHANGER 106L

PUREBRED(87/77.4) • HOMO POLLED (P-3) • BLACK
02/25/2023 • COLE 106L • NPM2568108

HUNT CREDENTIALS 37C ET
WZRK GAME CHANGER 4015G
WZRK MISS TUFFENUFF 4015B

COLE ARCHITECT 08A
COLE MISS ARCHITECT 047H
COLE MISS JUNEAU 351A

HUNT TESTAMENT 40T
JKTW WHISKEY RIVER 985 W
ROMN TUFF ENUFF 103T
WZRK MISS MTO 0010X
MRL X-RATED 014X
COLE MISS LODESTAR 826J
COLEMAN JUNEAU 044
COLE 471P

ACT BW
86
ADJ WW
706
ADJ YW
1209

	CD	BW	WW	YW	MK	CM	SC	DC	YG	CW	RE	MB	\$MI
EPDs	11	1.2	85	132	22	6	1.68	14	-.23	53	.97	.23	66
% RANK	40	50	2	2	75	50	2	40	>95	1	70	10	3

UFAT: 0.32 • UREA: 12.08 • UIMF: 2.130



WZRK GAME CHANGER 4015G • Sire of Lots 49, 50 & 51



COLE GAME CHANGER 89L

LIM-FLEX(75/65.8) • HOMO POLLED (P-2) • BLACK
02/20/2023 • COLE 89L • LFM2568187

HUNT CREDENTIALS 37C ET
WZRK GAME CHANGER 4015G
WZRK MISS TUFFENUFF 4015B

COLEMAN PRODUCTION 608
COLE MISS PRODUCT 3118A
COLE 4108P

HUNT TESTAMENT 40T
JKTW WHISKEY RIVER 985 W
ROMN TUFF ENUFF 103T
WZRK MISS MTO 0010X
GAR PRECISION 1680
COLEMAN BLACKCAP 211
COLE MAGNUM 15M
COLE 95G

ACT BW
76
ADJ WW
715
ADJ YW
1143

	CD	BW	WW	YW	MK	CM	SC	DC	YG	CW	RE	MB	\$MI
EPDs	12	-.4	69	105	32	7	1.2	17	-.1	49	.72	.57	72
% RANK	30	20	50	65	5	35	20	10	65	15	40	10	10

UFAT: 0.32 • UREA: 14.38 • UIMF: 4.235

Performance bull here! COLE Game Changer 89L combines a fresh pedigree with a fantastic phenotype guaranteed to catch our eye. His sire, WZRK Game Changer 4015G, is an AI sire gaining in popularity. On paper, 89L ranks in the top 10% for docility, marbling and mainstream terminal index. His dam is a daughter of Coleman Production 608 who is quickly sorting her way to the top.



COLE ENCORE 08L

PERCENTAGE(84/75.5) • HOMO POLLED (T) • HOMO BLACK (T)
01/21/2023 • COLE 08L • NXM2568070

LFLC CHECKING ACCOUNT 701C
SYES ENCORE 315E
MISS SYES ROSCOE 316X

COLE GENESIS 86G
COLE MISS GENESIS 1030J
COLE MISS PRODUCTION 285Z

WULF'S ZIPLOCK N922Z
LFLC 701X XTRA GOOD
PLND ROSCOE 051R
MISS SYES LINEBACKER 317S
HUNT CREDENTIALS 37C ET
COLE MISS XRATED 354A
COLEMAN PRODUCTION 608
COLE 10K

ACT BW
74
ADJ WW
731
ADJ YW
1185

	CD	BW	WW	YW	MK	CM	SC	DC	YG	CW	RE	MB	\$MI
EPDs	15	-.3	72	108	25	10	.42	16	-.48	26	1.16	.09	59
% RANK	15	45	15	20	25	10	85	5	10	75	10	85	55

UFAT: 0.15 • UREA: 16.38 • UIMF: 1.605

It won't be hard to find COLE Encore 08L in his pen. He combines impressive eye appeal with a desirable pedigree, a balanced EPD profile with calving ease, high growth, docility and ribeye. To top it off, this double homozygous Lim-Flex also posted very respectable actual performance and ultrasound figures.





SYES ENCORE 315E • Sire of Lot 53



Lot 54



Lot 55



COLE ENCORE 19L

PUREBRED(90/81.2) • HOMO POLLED (P-3) • HOMO BLACK (P-2)
01/30/2023 • COLE 19L • NPM2568076

LFLC CHECKING ACCOUNT 701C
SYES ENCORE 315E
MISS SYES ROSCOE 316X

COLE GENESIS 86G
COLE MISS GENESIS 1025J
COLE MISS OVERTIME 197Y

WULF'S ZIPLOCK N922Z
LFLC 701X XTRA GOOD
PLND ROSCOE 051R
MISS SYES LINEBACKER 317S
HUNT CREDENTIALS 37C ET
COLE MISS XRATED 354A
HC OVERTIME 972
COLE MISS PRODUCTION 878U

ACT BW
68
ADJ WW
670
ADJ YW
1077

	CD	BW	WW	YW	MK	CM	SC	DC	YG	CW	RE	MB	\$MI
EPDs	16	-2.6	63	93	23	10	.47	17	-.5	19	1.08	.18	60
% RANK	10	4	55	60	65	4	70	10	40	65	45	10	15

UFAT: 0.20 • UREA: 13.46 • UIMF: 3.280



COLE HALFBACK 91L

PERCENTAGE(76/66) • HOMO POLLED (T) • HOMO BLACK (T)
02/20/2023 • COLE 91L • NXM2568107

AHCC EARNING POWER 900E ET
COLE HALFBACK 08H
COLE MISS AUSTIN 499B

CELL ENVISION 7023E
COLE MISS ENVISION 026H
COLE MISS PRODUCTION 876U

MAGS ANCHOR
LVLS 9066U
AHCC XPENSE ACCOUNT X516
COLE MISS WINDFALL 170Y
AHCC BARN BURNER B907
PBRS ZSA ZSA 246Z
COLEMAN PRODUCTION 608
COLE 93N

ACT BW
76
ADJ WW
699
ADJ YW
1233

	CD	BW	WW	YW	MK	CM	SC	DC	YG	CW	RE	MB	\$MI
EPDs	11	.9	82	142	25	6	1.35	16	-.23	55	1.15	.29	68
% RANK	55	65	3	1	25	75	10	5	35	10	10	55	20

UFAT: 0.43 • UREA: 13.18 • UIMF: 4.095

If your goal is to up the ante in terms of improving growth and carcass merit without sacrificing eye appeal or convenience traits, then COLE Halfback 91L should be on your short list come sale day. He ranks in the top 1% for yearling weight, top 3% for weaning weight and top 5% for docility. Study this guy and be sure to have him on your short list sale day!



COLE EARNING POWER 115L

PERCENTAGE(78/66.3) • HOMO POLLED (P-2) • HET BLACK (T)
02/28/2023 • COLE 115L • NXM2568199

MAGS ANCHOR
AHCC EARNING POWER 900E ET
LVLS 9066U

COLE ARCHITECT 08A
COLE MISS ARCHITECT 825F
COLE MISS THUNDER 3112A

LH WAR HERO 195W
MGS XIPHOPAGOUS
LVLS FARMER JOHN 7428P
LVLS9066R
MRL X-RATED 014X
COLE MISS LODESTAR 826U
CONNELLY THUNDER
CARROUSELS LAUREL 1100L

ACT BW
84
ADJ WW
673
ADJ YW
1184

	CD	BW	WW	YW	MK	CM	SC	DC	YG	CW	RE	MB	\$MI
EPDs	12	.6	73	118	27	8	2	15	-.18	41	.87	.22	62
% RANK	45	60	15	10	15	45	1	10	40	40	30	65	40

UFAT: 0.30 • UREA: 15.34 • UIMF: 2.065

Another high growth, homozygous polled son of AHCC Earning Power 900E. His sons should grow and produce high quality carcasses, while his daughters should sort themselves to the top of the keeper pen. COLE Earning Power 115L ranks in the top 1% for scrotal and top 15% or better for growth traits. Opportunity knocks!



COLE BRAVO 71L

LIM-FLEX(50/43.9) • HOMO POLLED (P-1) • HOMO BLACK (T)
02/19/2023 • COLE 71L • LFM2568175

COLEMAN CHARLO 0256
COLEMAN BRAVO 6313
COLEMAN DONNA 714

COLE YOKEL 86Y
COLE MISS YOKEL 464B
COLE MISS STETSON 142Y

O C C PAXTON 730P
BOHI ABIGALE 6014
CONNEALY ONWARD
COLEMAN DONNA 386
COLE SUDDEN IMPACT 50S
COLE 42M
RUNL STETSON 850S
COLE MISS FIRSTDOWN 6146S

ACT BW
88
ADJ WW
661
ADJ YW
1177

	CD	BW	WW	YW	MK	CM	SC	DC	YG	CW	RE	MB	\$MI
EPDs	12	.6	65	110	19	6	1	14	-.18	39	.79	-.04	50
% RANK	30	40	70	50	95	50	35	35	40	35	30	>95	>95

UFAT: 0.43 • UREA: 13.36 • UIMF: 3.470



COLEMAN BRAVO 6313 • Sire of Lot 56



COLE EASY RIDER 41L

LIM-FLEX(65/57.6) • HOMO POLLED (P-1) • HOMO BLACK (P-1)
02/10/2023 • COLE 41L • LFM2568150

ELMW ALFALFA 103B
AHCC EASY RIDER 5594E
AHCC MISS Y AXIS C5594 ET

COLE ARCHITECT 08A
COLE MISS ARCHITECT 949G
COLE MISS PRODUCTION 101Y

TMCK ALFALFA 35X
ELMW WAIT-A-BIT 4W
MAGS Y-AXIS
AHCC DAKOTA LUVLY R595
MRL X-RATED 014X
COLE MISS LODESTAR 826U
COLEMAN PRODUCTION 608
COLE 524R

ACT BW
74
ADJ WW
625
ADJ YW
1114

	CD	BW	WW	YW	MK	CM	SC	DC	YG	CW	RE	MB	\$MI
EPDs	12	-.2	79	126	9	8	.95	14	-.19	41	1.01	.31	67
% RANK	30	25	20	20	>95	20	50	35	40	30	10	45	30

UFAT: 0.30 • UREA: 14.38 • UIMF: 2.765

COLE Easy Rider 41L combines a fresh pedigree with a fantastic phenotype guaranteed to catch your eye. His sire, AHCC Easy Rider 5594E, is an AI sire gaining in popularity. On paper, 41L posts a balanced set of EPDs with nine traits ranking in the top 30% of the breed or higher. His dam is a young daughter of COLE Architect 08A who is quickly sorting her way to the top.



Lot 57



COLE EMPIRE 42L

LIM-FLEX(62/55) • HOMO POLLED (P-3) • HOMO BLACK (P-3)
02/10/2023 • COLE 42L • LFM2568151

TMCK CASH FLOW 247C
TNGC EMPIRE 736E
MAGS BETH ET

RUNL STETSON 850S
COLE MISS STETSON 413B
COLE MISS THUNDER 212Z

MAGS ALI
TMCK NINA 17X
MAGS ZODIAC
MAGS THEATRICAL
JCL LODESTAR 27L
RUNL 72L
CONNEALY THUNDER
COLE MISS MAGNUM 6100S

ACT BW
84
ADJ WW
708
ADJ YW
1248

	CD	BW	WW	YW	MK	CM	SC	DC	YG	CW	RE	MB	\$MI
EPDs	13	-1.2	71	118	20	7	1.15	19	-.15	37	.77	.4	68
% RANK	20	10	45	35	90	35	30	2	50	40	35	25	30

UFAT: 0.30 • UREA: 16.08 • UIMF: 3.055



COLE EMPIRE 57L

LIM-FLEX(62/55.2) • HOMO POLLED (P-1) • HOMO BLACK (T)
02/14/2023 • COLE 57L • LFM2568163

TMCK CASH FLOW 247C
TNGC EMPIRE 736E
MAGS BETH ET

COLE ARCHITECT 08A
COLE MISS ARCHITECT 919G
COLE MISS PRODUCTION 9178

MAGS ALI
TMCK NINA 17X
MAGS ZODIAC
MAGS THEATRICAL
MRL X-RATED 014X
COLE MISS LODESTAR 826U
COLEMAN PRODUCTION 608
COLE 489P

ACT BW
102
ADJ WW
798
ADJ YW
1360

	CD	BW	WW	YW	MK	CM	SC	DC	YG	CW	RE	MB	\$MI
EPDs	7	3.2	93	152	22	2	1.3	19	-.03	56	.8	.44	75
% RANK	95	95	2	1	80	>95	15	2	80	4	30	20	10

UFAT: 0.36 • UREA: 14.06 • UIMF: 3.245



COLE GENIUS 62L

PERCENTAGE(81/73.2) • HOMO POLLED (P-3) • HOMO BLACK (P-1)
02/15/2023 • COLE 62L • NXM2568166

WULFS COBRA 2662C
WULFS GENIUS 5293G
WULFS CHARISMA 5293C

WULFS XTRACTOR X233X ACT BW
MISS WULFETTE 2662Z 76
WULFS ZOUAVE 8438Z
WULFS ZESHULIA 2631Z ADJ WW
MAGS ALI 616
TMCK NINA 17X ADJ YW
AHCC WESTWIND W544 1068
COLE MISS GENERAL 945W

TMCK CASH FLOW 247C
COLE MISS CASHFLOW 942G
COLE MISS WESTWIND 3144A

	CD	BW	WW	YW	MK	CM	SC	DC	YG	CW	RE	MB	\$MI
EPDs	13	-2	66	100	25	10	.72	14	-16	34	.89	.13	56
% RANK	30	25	25	30	25	10	50	15	45	55	30	80	70

UFAT: 0.31 • UREA: 14.38 • UIMF: 2.800



COLE GENIUS 51L

PUREBRED(95/85.8) • HOMO POLLED (P-3) • HET BLACK (T)
02/13/2023 • COLE 51L • NPM2568158

WULFS COBRA 2662C
WULFS GENIUS 5293G
WULFS CHARISMA 5293C

WULFS XTRACTOR X233X ACT BW
MISS WULFETTE 2662Z 66
WULFS ZOUAVE 8438Z
WULFS ZESHULIA 2631Z ADJ WW
DLVL XEROX 023X 572
MISS SYES FRIENDLY 465Z ADJ YW
MRL X-RATED 014X 1020
COLE MISS JUSTICE 772T

SYES BACKSTAGE 466B
COLE MISS BACKSTAGE 712E
COLE MISS XRATED 571C

	CD	BW	WW	YW	MK	CM	SC	DC	YG	CW	RE	MB	\$MI
EPDs	15	-3.6	56	80	28	11	.35	12	-43	19	1.03	-.22	42
% RANK	10	2	80	85	20	2	80	70	65	65	60	>95	>95

UFAT: 0.20 • UREA: 12.04 • UIMF: 1.350



COLE GENIUS 75L

PERCENTAGE(83/74.2) • HOMO POLLED (P-2) • HET BLACK (T)
02/17/2023 • COLE 75L • NXM2568179

WULFS COBRA 2662C
WULFS GENIUS 5293G
WULFS CHARISMA 5293C

WULFS XTRACTOR X233X ACT BW
MISS WULFETTE 2662Z 78
WULFS ZOUAVE 8438Z
WULFS ZESHULIA 2631Z ADJ WW
AHCC WESTWIND W544 592
COLE MISS LODESTAR 826U ADJ YW
COLEMAN PRODUCTION 608 953
COLE 4142P

COLE ZAM 62Z
COLE MISS ZAM 7104E
COLE MISS PRODUCTION 874U

	CD	BW	WW	YW	MK	CM	SC	DC	YG	CW	RE	MB	\$MI
EPDs	14	-1.8	58	79	24	10	.5	14	-.23	24	.84	.11	53
% RANK	20	25	45	60	40	10	75	15	35	80	35	80	80

UFAT: 0.50 • UREA: 12.62 • UIMF: 2.510



COLE GENESIS 44L ET

LIM-FLEX(68/60.7) • HOMO POLLED (P-2) • HOMO BLACK (T)
02/12/2023 • COLE 44L • LFM2566607

HUNT CREDENTIALS 37C ET
COLE GENESIS 86G
COLE MISS XRATED 354A

HUNT TESTAMENT 40T ACT BW
JKTW WHISKEY RIVER 985 W 70
MRL X-RATED 014X
COLE MISS PRODUCTION 874U ADJ WW
JAUER 353 TRAVELER 589 27 609
BT EVERELDA ENTENSE 613L ADJ YW
COLE FIRST DOWN 46D 1034
COLE 482D ^{GE-EPDs}

	CD	BW	WW	YW	MK	CM	SC	DC	YG	CW	RE	MB	\$MI
EPDs	10	-.7	66	100	36	6	.6	13	-.13	38	.78	.51	70
% RANK	55	15	65	75	1	50	80	50	55	40	35	15	20

UFAT: 0.25 • UREA: 12.62 • UIMF: 2.485



COLE GENESIS 54L

PERCENTAGE(81/72.1) • HOMO POLLED (P-2) • HET BLACK (T)
02/13/2023 • COLE 54L • NXM2568160

HUNT CREDENTIALS 37C ET
COLE GENESIS 86G
COLE MISS XRATED 354A

HUNT TESTAMENT 40T ACT BW
JKTW WHISKEY RIVER 985 W 76
MRL X-RATED 014X
COLE MISS PRODUCTION 874U ADJ WW
HC OVERTIME 756 621
HC DYNASTY 215 ADJ YW
COLEMAN PRODUCTION 608 1149
COLE 406P

HC OVERTIME 972
COLE MISS OVERTIME 197Y
COLE MISS PRODUCTION 878U

	CD	BW	WW	YW	MK	CM	SC	DC	YG	CW	RE	MB	\$MI
EPDs	15	-1.8	59	95	29	9	.55	16	-.17	32	.7	.44	65
% RANK	15	25	45	35	10	25	75	5	45	60	50	30	25

UFAT: 0.37 • UREA: 13.24 • UIMF: 3.290



COLE GENESIS 120L ET

LIM-FLEX(68/60.7) • HOMO POLLED (P-2) • HET BLACK (T)
02/28/2023 • COLE 120L • LFM2566605

HUNT CREDENTIALS 37C ET
COLE GENESIS 86G
COLE MISS XRATED 354A

HUNT TESTAMENT 40T ACT BW
JKTW WHISKEY RIVER 985 W 96
MRL X-RATED 014X
COLE MISS PRODUCTION 874U ADJ WW
JAUER 353 TRAVELER 589 27 631
BT EVERELDA ENTENSE 613L ADJ YW
COLE FIRST DOWN 46D 1091
COLE 482D ^{GE-EPDs}

	CD	BW	WW	YW	MK	CM	SC	DC	YG	CW	RE	MB	\$MI
EPDs	11	-.6	67	103	36	7	.6	14	-.08	42	.71	.6	73
% RANK	40	20	60	65	1	35	80	35	70	25	45	5	10

UFAT: 0.46 • UREA: 12.04 • UIMF: 3.555



COLE GENESIS 139L

LIM-FLEX(68/61.3) • HOMO POLLED (T) • HOMO BLACK (T)
03/16/2023 • COLE 139L • LFM2568212

HUNT CREDENTIALS 37C ET
COLE GENESIS 86G
COLE MISS XRATED 354A

HUNT TESTAMENT 40T ACT BW
JKTW WHISKEY RIVER 985 W 84
MRL X-RATED 014X
COLE MISS PRODUCTION 874U ADJ WW
BALDRIDGE KABOOM K243 KCF 774
PARKA OF CONANGA 241 ADJ YW
COLE FIRST DOWN 46D 1220
ELOR BLOSSOM 224B

CONNELLY THUNDER
COLE MISS THUNDER 384A
COLE MISS FIRSTDOWN 8104U

	CD	BW	WW	YW	MK	CM	SC	DC	YG	CW	RE	MB	\$MI
EPDs	15	-.6	64	99	32	11	1	14	-.09	37	.54	.41	65
% RANK	5	20	75	75	5	2	35	35	65	40	70	25	40

UFAT: 0.39 • UREA: 13.46 • UIMF: 2.965



COLE GENESIS 147L

PUREBRED(93/83.3) • HOMO POLLED (P-2) • HET BLACK (T)
03/25/2023 • COLE 147L • NPM2568218

HUNT CREDENTIALS 37C ET
COLE GENESIS 86G
COLE MISS XRATED 354A

HUNT TESTAMENT 40T ACT BW
JKTW WHISKEY RIVER 985 W 84
MRL X-RATED 014X
COLE MISS PRODUCTION 874U ADJ WW
KAJO RESPONDER 120R 620
AHCC MISS NORHTSTAR R516 ADJ YW
COLE 132T 1072
COLE MISS KATYMAY 9105W

	CD	BW	WW	YW	MK	CM	SC	DC	YG	CW	RE	MB	\$MI
EPDs	13	-.2	57	92	27	8	.65	13	-.21	27	.68	.47	66
% RANK	20	25	75	60	30	25	40	55	>95	35	>95	1	3

UFAT: 0.27 • UREA: 13.54 • UIMF: 2.850

92 COLE GAME CHANGER 138L

PUREBRED(87/77.5) • HOMO POLLED (P-3) • BLACK
03/13/2023 • COLE 138L • NPM2568211

HUNT CREDENTIALS 37C ET
WZRK GAME CHANGER 4015G
WZRK MISS TUFFENUFF 4015B

COLE ZAM 62Z
COLE MISS ZAM 575C
COLE MISS PROCUTION 169Y

HUNT TESTAMENT 40T
JKTW WHISKEY RIVER 985 W
ROMN TUFF ENUFF 103T
WZRK MISS MTO 0010X
AHCC WESTWIND W544
COLE MISS LODESTAR 826U
COLEMAN PRODUCTION 608
COLE 06R

ACT BW 86
ADJ WW 622
ADJ YW 1103

	CD	BW	WW	YW	MK	CM	SC	DC	YG	CW	RE	MB	\$MI
EPDs	12	-.2	63	102	29	8	1.4	16	-17	41	.6	.3	61
% RANK	30	25	55	40	15	25	3	10	>95	5	>95	3	10

UFAT: 0.21 • UREA: 11.60 • UIMF: 2.990

93 COLE FASTLANE 154L

LIM-FLEX(68/59.7) • HOMO POLLED (P-3) • HOMO BLACK (P-2)
04/06/2023 • COLE 154L • LFM2568096

COLE CADILLAC 05C
COLE FASTLANE 34F
COLE MISS BIG WIND 652D

CONNEALY CONSENSUS 7229
COLE MISS CONSENSUS 559C
COLE 129R

ROMN TUFF ENUFF 103T
COLE MISS XRATED 354A
AHCC BIG WIND B904
COLE MISS AUSTIN 335A
CONNEALY CONSENSUS
BLUE LILLY OF CONANGA 16
COLE 11H
COLE 42K

ACT BW 90
ADJ WW 798
ADJ YW 1242

	CD	BW	WW	YW	MK	CM	SC	DC	YG	CW	RE	MB	\$MI
EPDs	7	1.9	64	97	30	3	0	10	-23	22	.6	.32	63
% RANK	95	75	75	80	15	95	>95	85	30	90	60	40	50

UFAT: 0.22 • UREA: 13.48 • UIMF: 2.470

94 COLE AVIATOR 155L

LIM-FLEX(64/57.2) • HOMO POLLED (T) • HOMO BLACK (T)
04/17/2023 • COLE 155L • LFM2568097

MAGS AVIATOR
COLE AVIATOR 80F
COLE MISS TRAVELER 012X

COLE ARCHITECT 08A
COLE MISS ARCHITECT 841F ET
COLE MISS TRAVELER 029X

MAGS WINSTON
MAGS XTRA REST
COLEMAN TRAVELER 797
COLE 801H
MRL X-RATED 014X
COLE MISS LODESTAR 826U
COLEMAN TRAVELER 797
COLE 91L

ACT BW 82
ADJ WW 848
ADJ YW 1237

	CD	BW	WW	YW	MK	CM	SC	DC	YG	CW	RE	MB	\$MI
EPDs	7	1.5	76	114	23	4	.45	14	-.11	26	.73	.13	59
% RANK	95	65	25	40	70	85	90	35	60	80	40	80	75

UFAT: 0.29 • UREA: 12.90 • UIMF: 3.025

95 COLE AVIATOR 144L

LIM-FLEX(64/57.2) • HOMO POLLED (T) • HOMO BLACK (P-2)
03/23/2023 • COLE 144L • LFM2568215

MAGS AVIATOR
COLE AVIATOR 80F
COLE MISS TRAVELER 012X

COLE ARCHITECT 08A
COLE MISS ARCHITECT 914G
COLE MISS CONSENSUS 541C

MAGS WINSTON
MAGS XTRA REST
COLEMAN TRAVELER 797
COLE 801H
MRL X-RATED 014X
COLE MISS LODESTAR 826U
CONNEALY CONSENSUS 7229
COLE MISS BLACK TANK 721T

ACT BW 86
ADJ WW 731
ADJ YW 1222

	CD	BW	WW	YW	MK	CM	SC	DC	YG	CW	RE	MB	\$MI
EPDs	10	.5	77	120	19	6	.55	13	-18	29	.8	.17	61
% RANK	55	40	25	30	95	50	85	50	40	70	30	75	60

UFAT: 0.25 • UREA: 15.30 • UIMF: 2.360

96 COLE AVIATOR 137L

PERCENTAGE(77/65.5) • HET POLLED (T) • BLACK
03/11/2023 • COLE 137L • NXM2568094

MAGS AVIATOR
COLE AVIATOR 80F
COLE MISS TRAVELER 012X

MRL X-RATED 014X
COLE MISS XRATED 553C
COLE MISS LODESTAR 821U

MAGS WINSTON
MAGS XTRA REST
COLEMAN TRAVELER 797
COLE 801H
CTCA BUCKEYE BULL 8261U
MRL TASTE OF COUNTRY 790T
JCL LODESTAR 27L
COLE 605S

ACT BW 86
ADJ WW 676
ADJ YW 1104

	CD	BW	WW	YW	MK	CM	SC	DC	YG	CW	RE	MB	\$MI
EPDs	11	.3	67	104	26	7	.45	12	-19	21	.66	.29	63
% RANK	55	55	25	25	20	60	85	30	40	85	55	55	35

UFAT: 0.37 • UREA: 13.26 • UIMF: 2.970

97 COLE CADILLAC 151L

PERCENTAGE(84/73.9) • HOMO POLLED (T) • BLACK
04/04/2023 • COLE 151L • NXM2568091

COLE CADILLAC 05C
COLE CADILLAC 126J
COLE MISS AUSTIN 7113E

CELL ENVISION 7023E
COLE MISS ENVISION 1065J
COLE MISS AUSTIN 3135A

ROMN TUFF ENUFF 103T
COLE MISS XRATED 354A
AHCC XPENSE ACCOUNT X516
COLE286Z
AHCC BARN BURNER B907
PBRZ ZSA ZSA 246Z
AHCC XPENSE ACCOUNT X516
COLE MISS PRODUCTION 089X

ACT BW 74
ADJ WW 672
ADJ YW 1101

	CD	BW	WW	YW	MK	CM	SC	DC	YG	CW	RE	MB	\$MI
EPDs	10	.5	55	92	20	5	.4	14	-.37	21	1.06	.29	60
% RANK	70	60	55	40	75	85	85	15	20	85	15	55	45

UFAT: 0.27 • UREA: 15.54 • UIMF: 2.510



98 COLE AVIATOR 153L

LIM-FLEX(71/62.3) • HET POLLED (T) • HET BLACK (T)
04/06/2023 • COLE 153L • LFM2568095

MAGS AVIATOR
COLE AVIATOR 80F
COLE MISS TRAVELER 012X

ROMN TUFF ENUFF 103T
COLE MISS TUFF ENUFF 308A
COLE MISS STETSON 114Y

MAGS WINSTON
MAGS XTRA REST
COLEMAN TRAVELER 797
COLE 801H
WULFS RANSOM 3059R
ROMN ROBERTA 35R
RUNL STETSON 850S
COLE MISS PRODUCTION 9186

ACT BW 76
ADJ WW 645
ADJ YW 1175

	CD	BW	WW	YW	MK	CM	SC	DC	YG	CW	RE	MB	\$MI
EPDs	14	-2.5	62	101	21	9	.1	14	-.16	27	.72	.07	53
% RANK	10	3	80	70	85	15	>95	35	50	75	40	90	95

UFAT: 0.34 • UREA: 15.18 • UIMF: 2.490

Thank You

NOTES



Yearling Bulls _____ Gross _____ Avg. _____

24/7/365
Real-time. Industry Relevant.

Think Limousin. Think L365.

NORTH REGION - Sarah Johnson
614/266-2646, Sarah@limousin365.com

SOUTH REGION - DeRon Heldermon
405/850-5102, deron@limousin365.com

The Site That Never Sleeps

405.260.3775 • www.limousin365.com • Like us on



COLE EARNING POWER 82H

COLE GENESIS 86G

COLE FORTUNE 12F

COLE JUNEAU 48J ET

AHCC EARNING POWER 900E ET

COLE HOMERUN 51H ET

COLE HALFBACK 08H

SYES ENCORE 315E

WULFS GENIUS 5293G

AHCC EASY RIDER 5594E

TNGC EMPIRE 736E

WZRK GAME CHANGER 4015G

COLE MISS XRATED 354A

COLE MISS PRODUCTION 104Y

COLE BEAUTY 276Z

REFERENCE SIRES

	CD	BW	WW	YW	MK	CM	SC	DC	YG	CW	RE		
AHCC EARNING POWER 900E ET Percentage(81/67.9) • Homo Polled • Homo Black • S: MAGS ANCHOR • D: LVLS 9066U	12	1.8	80	137	33	10	2.4	18	-0.14	61	0.88	0.52	75
AHCC EASY RIDER 5594E Lim-Flex(56/49.7) • Homo Polled • Homo Black • S: ELMW ALFALFA 103B • D: AHCC MISS Y AXIS C5594 ET	12	-0.3	90	140	21	11	1.0	12	-0.12	32	0.81	0.64	81
CELL ENVISION 7023E Purebred(87/75.7) • Homo Polled • Homo Black • S: AHCC BARN BURNER B907 • D: PBRZ ZSA ZSA 246Z	6	2.7	99	167	14	4	2.3	21	-0.36	65	1.56	0.12	68
COLE AVIATOR 80F Lim-Flex(54/48.2) • Het Polled • Homo Black • S: MAGS AVIATOR • D: COLE MISS TRAVELER 012X	11	0.3	67	114	26	6	-0.2	15	0.03	20	0.32	0.38	64
COLE CADILLAC 126J Purebred(87/76.7) • Homo Polled • Red • S: COLE CADILLAC 05C • D: COLE MISS AUSTIN 7113E	11	0.0	42	71	19	6	-0.6	11	-0.41	4	0.91	0.26	56
COLE EARNING POWER 82H Purebred(90/75.4) • Homo Polled • Black • S: AHCC EARNING POWER 900E ET • D: COLE MISS XRATED 553C	17	-0.5	72	114	29	12	1.9	14	-0.22	36	0.84	0.35	66
COLE FASTLANE 34F Purebred(87/76) • Homo Polled • Homo Black • S: COLE CADILLAC 05C • D: COLE MISS BIG WIND 652D	7	0.2	53	83	26	4	-1.1	10	-0.37	11	0.82	0.05	51
COLE FORTUNE 12F Percentage(81/71.3) • Homo Polled • Het Black • S: COLE CADILLAC 05C • D: COLE MISS AUSTIN 3157A	18	-4.3	63	105	29	13	-0.4	12	-0.19	25	0.94	0.13	56
COLE GENESIS 86G Purebred(87/77.3) • Homo Polled • Black • S: HUNT CREDENTIALS 37C ET • D: COLE MISS XRATED 354A	17	-1.6	68	106	34	12	0.6	15	-0.05	36	0.49	0.71	77
COLE HALFBACK 08H Percentage(84/72.8) • Homo Polled • Homo Black • S: AHCC EARNING POWER 900E ET • D: COLE MISS AUSTIN 499B	7	3.0	85	146	30	6	1.4	14	-0.28	56	1.21	0.27	68
COLE HOMERUN 51H ET Percentage(81/70.3) • Homo Polled • Homo Black • S: CELL ENVISION 7023E • D: COLE MISS XRATED 354A	10	2.0	83	134	25	6	1.6	12	-0.20	52	1.08	0.37	71
COLE JUNEAU 48J ET Purebred(93/83.2) • Homo Polled • Het Black • S: COLE GENESIS 86G • D: COLE BEAUTY 276Z	12	1.3	61	97	29	7	0.7	14	-0.15	26	0.51	0.77	78
COLEMAN BRAVO 6313 ANGUS • Homo Polled • Homo Black • S: COLEMAN CHARLO 0256 • D: COLEMAN DONNA 714	20	0.6	74	125	22	8	1.7	14	0.17	39	0.18	0.13	59
SYES ENCORE 315E Purebred(100/90.2) • Homo Polled • Homo Black • S: LFLC CHECKING ACCOUNT 701C • D: MISS SYES ROSCOE 316X	17	-2.4	68	97	17	10	0.4	18	-0.85	14	1.58	-0.27	47
TNGC EMPIRE 736E Lim-Flex(50/44.9) • Homo Polled • Homo Black • S: TMCK CASH FLOW 247C • D: MAGS BETH ET	8	1.0	90	158	23	2	1.6	24	0.18	59	0.38	0.54	76
WULFS GENIUS 5293G Purebred(91/82.2) • Homo Polled • Homo Black • S: WULFS COBRA 2662C • D: WULFS CHARISMA 5293C	13	-2.4	70	99	28	12	0.4	14	-0.33	23	1.18	-0.23	45
WZRK GAME CHANGER 4015G Purebred(100/89) • Homo Polled • Red • S: HUNT CREDENTIALS 37C ET • D: WZRK MISS TUFFENUFF 4015B	9	0.7	76	125	38	7	2.1	18	-0.14	60	0.73	0.41	69

REFERENCE DAMS

	CD	BW	WW	YW	MK	CM	SC	DC	YG	CW	RE		
COLE MISS XRATED 354A Lim-Flex(75/64.9) • Homo Polled • Het Black • S: MRL X-RATED 014X • D: COLE MISS PRODUCTION 874U	10	1.2	68	104	36	6	-0.3	8	-0.19	31	0.79	0.59	73
COLE MISS PRODUCTION 104Y Lim-Flex(50/45.1) • Homo Polled • Het Black • S: COLEMAN PRODUCTION 608 • D: COLE 50K	12	1.3	59	92	25	7	0.1	13	-0.07	37	0.63	0.70	74
COLE BEAUTY 276Z Purebred(100/89) • Homo Polled • Het Black • S: COLE 132T • D: COLE MISS KATY MAY 9105W	8	2.9	59	88	24	2	0.7	11	-0.34	19	0.78	0.43	66



2005 Ruhl Drive
Guthrie, OK 73044

46th Annual
COLEMAN
LIMOUSIN RANCH
Production Sale

TUESDAY, APRIL 2, 2024

1 p.m. MST - Five Valleys Livestock - Missoula, Montana

Lot 2

Lot 1