

# 74 SCALE BUSTIN'

**BULL SALE** Volume II

MARCH 19, 2025 • NOON

Sterling Livestock Commission • Sterling, Colorado

**SELLING 61 BULLS**

36 Limousin & Lim-Flex Bulls • 25 Red Angus Bulls



# SCALE BUSTIN'



## BULL SALE Volume II

MARCH 19, 2025 • NOON

### SELLING 61 BULLS

36 Limousin & Lim-Flex Bulls • 25 Red Angus Bulls

#### SALE LOCATION

Sterling Livestock Commission ..... 970-522-1950  
20197 Riverside Dr., Sterling, CO 80751 • office@sterlinglivestock.com

#### SCHEDULE

- 9 a.m. Bulls Available for Viewing
- 11 a.m. Sterling Livestock Special Cow Sale
- Noon T4 Scale Bustin' Bull Sale

#### SALE DAY PHONES

- Tadd Thomas ..... 970.590.3725
- Kiley McKinna ..... 402.350.3447
- Wiley Fanta ..... 320.287.0751

#### AUCTIONEER

Jason Santomaso

#### WATCH AND BID ONLINE



#### SUPPLEMENT INFORMATION

Scrotal Measurements will be available sale day and online at [www.dvauction.com](http://www.dvauction.com)

#### PURCHASER OBLIGATION

All animals are at risk of the purchaser once sale is made.

#### VIEWING CATALOG AND VIDEOS

Catalog and videos of bulls can be viewed online at [www.mcmarketingmanagement.com](http://www.mcmarketingmanagement.com) or [www.dvauction.com](http://www.dvauction.com). Buyers are encouraged to view the cattle any time prior to sale date in case of inclement weather sale day.

All cattle sell under the standard terms and conditions of the North American Limousin Foundation and the Red Angus Association of America.

#### MORTALITY INSURANCE

Grassroots Insurance ..... 515.229.5227

#### LODGING

Holiday Inn Express ..... 970.425.7414  
1555 E Chestnut St, Sterling, CO 80751

#### GENOMICALLY-ENHANCED EPDS

The Limousin and Lim-Flex bulls in the sale have been genomically tested. GE-EPDs provide more precise EPDs based on a combination of pedigree, phenotype and DNA. One major benefit is risk reduction through increased accuracies on many traits—the equivalent to having 8-20 progeny. This saves time when assessing young breeding stock and delivers commercial customers more confidence when buying seedstock. Also, if you look under the EPD block of information, there is a % rank category with numbers showing where each animal ranks within the population. This will help you select bulls high in the traits important to you. EPDs dated 2/18/25

Bull sale season is upon us.

Welcome to the second installment of the T4 Livestock Scale Bustin' Bull Sale. We have compiled an excellent group of Lim-Flex and Red Angus bulls with qualities we believe any cattleman can appreciate. These bulls are top tier and we are excited to see what they can do for your program in the future.

From day one, our mission in the seedstock business has been to propagate cattle that will make positive contributions to the beef cattle industry up and down the production chain. Our experience in the cattle feeding business has taught us the value of traits such as feed conversion, average daily gain and carcass quality. As we move forward in the seedstock business, trust that we will strive to put forth cattle capable of covering all the bases.

Our program's vision has been developed through the lens of 20 years of feeding and marketing more than two million head of fed cattle. These experiences have provided us valuable knowledge in developing a registered cattle herd that performs at all levels of production. We strive to produce cattle with the genotype and phenotype to excel in the show ring, pasture, feedlot and on the rail.

We invite you to take a look at this years offering. Give us a call to see these sons of Wulfs Joint Venture G579J, CJSJ Data Bank 6124D, PIE Hollywood 222, J6 Blazer 176J, among many other leading AI sires in the Limousin and Red Angus breeds.

All bulls come with ADG, RFI, and feed conversion data! Those of you that have fed cattle with us through Advantage Feedyard know how serious we take feed efficiency and many of you have learned the importance of it...now that we are in the seedstock world we still take it serious!

Let us help achieve your herd goals with T4 Lim-Flex and Red Angus genetics! If we can be of any assistance, please don't hesitate to contact Tadd, Bill or any member of the marketing team.

Sincerely

*The Tadd Thomas Family*



Livestock

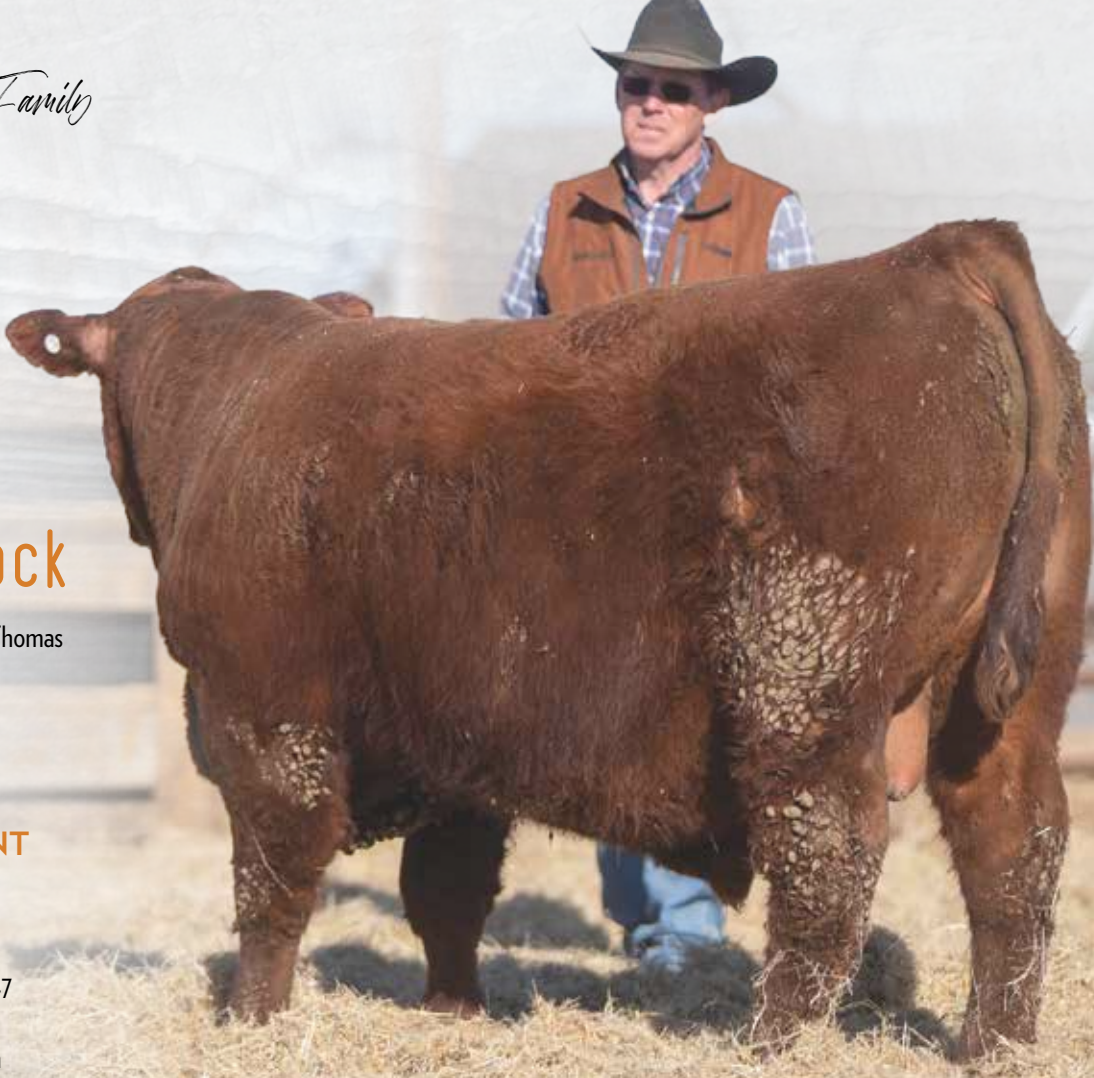
Tadd, Nan, Tyla & Trotter Thomas  
Sterling, CO  
Tadd, 970-590-3725  
Bill Steel, 308-672-5680

SALE MANAGEMENT



Kiley McKinna, 402-350-3447  
Wiley Fanta, 320-287-0751  
mcmarketingsales@aol.com

www.mcmarketingmanagement.com





# EFFICIENCY MATTERS

Information sourced from  
Midland Bull Test.

All bulls selling come with ADG, RFI, and feed conversion data! Those of you that have fed cattle with us know how serious we take feed efficiency and many of you have learned the importance of it... now that we are in the seedstock world we still take it serious!

Efficiency Proven Genetics offer you up to 20% more savings on the cow herd... and 20% more savings in the feedlot. It doesn't cost you any more than making sure you're using the right bulls. The cow is our primary income driver with 90% of the genetics introduced to the cowherd coming from the bulls we use, whether it's fertility, durability, longevity, weaning weight or efficiency.

The primary reason we exist as cattle producers is the ability of cattle to convert grass and roughages to a highly nutritious, protein dense product—Beef! In short, we sell our grasses and roughages through the production of cattle. The greatest opportunity for ranchers long term profitability lies in our ability to efficiently and productively convert grass to pounds and profitability. To do that it takes a fertile, sound, efficient, productive cow with longevity.

- Efficiency is 38-40% heritable which is high for production traits.
- There is a 90% correlation between how a tested bull does and how his daughters perform.
- Efficiency is an independent trait with no correlation to other traits such as fertility, milking ability, performance, frame size, body condition, etc. — which means you can select for this trait without having a negative impact on other traits.
- Efficiency benefits are found both in cow herd and in the feedlot.
- Through genetic selection there is a potential to improve efficiency by up to 20-25%.
- Feed and forage costs are the #1 expense in raising cattle, after fixed costs.
- 70% of feed is used for maintenance – improving feed efficiency has a big economic impact.
- Efficient cattle are quieter cattle.
- Research has shown that the most efficient 1/3 of cows in your herd will consume up to 20% less forage than the least efficient 1/3 of cows in your herd.
- Size doesn't matter – just because a cow is small or fat doesn't mean she is efficient in her feed utilization.
- There is a strong, positive genetic correlation between post-weaning RFI and feed intake as a mature cow.
- Cows measured for RFI as calves showed the same efficiency as producing cows with a 30% variance in feed intake as first & second calvers. Accounting for today's costs, that's a \$50 difference in wintering costs alone.

- Studies in Australia on cows that had been RFI tested as calves found that cows who were efficient as weaned calves required less feed as mature cows with no compromise in the weaning weight of their calves.
- At West Virginia University, they took steers from a low RFI sire and from a high RFI sire, and measured their intake on pasture through the summer. This particular summer saw a drought develop, and as the drought got stronger the negative RFI steers excelled even more.

What's exciting about RFI is it is a selection tool that is about the cow/cowherd. The benefit of selecting for RFI means better utilization of grass, more drought resistant females and improved nutrition utilization. These benefits compound to ultimately result in improved fertility and longevity while not compromising weaning weight.

Feel free to contact us to discuss the value of efficiency and how it relates to your profitability.

**Dry matter intake (DMI)** is the amount of feed an animal eats per day without moisture. It's a key factor in a health, milk production and profitability. For instance, a 1 lb./day increase in DMI can result in 2.2 to 2.75 lbs. more milk production.

**Average daily gain (ADG)** is a measure of how much weight an animal gains per day. It's a key performance measurement for beef cattle producers. ADG helps determine how quickly an animal will be ready for market. The faster an animal gains weight, the more profitable it can be for the producer.

**Residual feed intake (RFI)** is a measure of how efficiently cattle use feed. It's calculated by comparing an animal's actual feed intake to what's expected based on its size and growth. RFI is independent of the level of production and can help improve profits by identifying animals that eat more or less than expected. Cattle with low RFI values are more efficient and eat less than expected. Cattle with high RFI values are less efficient and eat more than expected.

**Feed conversion ratio (FCR)** in cattle measures how efficiently the animal converts feed into body mass. It's a key performance metric to evaluate productivity. A lower FCR is better, indicating that the animal is more efficient at converting feed into body mass. For example, a FCR of 3.5 means that the animal gained 1 pound of weight for every 3.5 pounds of feed consumed.

**Efficiency Plus** denotes bulls that have RFI measurements below -1.00.



# LIMOUSIN & LIM-FLEX



We are excited to showcase this outstanding selection of spring yearling bulls, highlighting the strength and versatility of T4 Livestock's Limousin and Lim-Flex genetics. By utilizing advanced AI and embryo transfer techniques, we work to enhance our genetics while staying true to the practical traits that commercial cattlemen rely on. Superior pedigrees and industry-leading EPDs add value, but a bull's true merit is found in its ability to perform in real-world conditions. Your success defines ours, and as we refine our program to better support your operation, we value and appreciate your feedback.



LOT 1



LOT 1-3 | National Western Stock Show

**1**

**TFOR MILE MARKER 155M**

02/11/2024 | TFOR 155M | LIM-FLEX(44/39.8) BULL  
HOMO POLLED (P-1) | DOUBLE BLACK | LFM3135980

WULFS FIFTY T804F  
**WULFS JOINT VENTURE G579J**  
DHIL TMG 5795C ET

KF TREASURE 9122  
**TFOR KARMEN 037K**  
B/D RICE PRIM LASSIE 9523

LFLC BANK ACCOUNT 701B  
TECS DANTEAN 1629D  
MAGS AVIATOR  
PBRs TOUCH ME GENTLY 798T  
MGR TREASURE  
KF MARTHA 7147  
B/D RICE PAYDAY 7027  
B/D RICE PRIM LASSIE 7532

**GE-EPDs**

	CE	BW	WW	YW	MK	CM	SC	DC	YG	CW	RE	MB	STPI
EPD	10	.7	82	134	28	6	-	13	-.08	20	.32	.44	61
RANK	60	45	15	10	25	55	-	50	65	95	95	25	>95

BW: 84 | ADJ. WW: 671 | ADJ. YW: 1327

What a way to start this year's sale! If you like long-bodied, heavily muscled, functionally correct cattle that are homozygous polled, then watch for this exceptional son of Wulfs Joint Venture G579J. His paternal influence is strong and fits the mold breeders search for in a herd bull. Wulf's Joint Venture G579J is a son of Wulfs Fifty T804F and out of a MAGS Aviator female, DHIL TMG 5795C ET. Wulf's Joint Venture G579J was the Supreme Champion Bull at the 2023 Black Hills Stock Show. It gets said too often, but this is truly an opportunity with very little risk yet great rewards. We predict TFOR Mile Marker will produce highly marketable calves.

LOT 2



**2**

**TFOR MARKET FORCE 178M**

02/21/2024 | TFOR 178M | LIM-FLEX(39/35.1) BULL  
HOMO POLLED (P-1) | HOMO BLACK (P-2) | LFM3135808

CJSL DAUNTLESS 6257D ET  
**SSTO KASH MONEY 204K ET**  
RIVERSTONE CHARMED

G A R JEREMIAH  
**GVC KAYLEE E201**  
GVC KAYLEE A19

MAGS ZODIAC  
LLJB ABSOLUTE STYLE 3056A  
TMCK DURHAM WHEAT 6030X  
HSF YOUR FANTASY

G A R PROPHET  
G A R DAYBREAK 642  
CONNELY CONSENSUS 7229  
GVC MISS GRID IRON U50

**GE-EPDs**

	CE	BW	WW	YW	MK	CM	SC	DC	YG	CW	RE	MB	\$TPI
EPD	16	2.6	83	133	26	10		12	.09	53	.36	.51	119
RANK	3	85	10	15	40	5	-	65	>95	10	90	15	20

BW: 77 | ADJ. WW: 713 | ADJ. YW: 1228

Here is a bull that deserves some serious attention. Study his flawless structure, level top and hind-quarter dimension. He is sired by SSTO Kash Money 204K, who combines some of the most successful cattle in breed history, it doesn't get more predictable than that. These cattle have impressed some of the most reputable cattlemen in the industry for their eye-catching profile and athletic abilities when set into motion. Numerically, TFOR Market Force has a well-balanced EPD profile highlighted by a top 3% ranking for Calving Ease, top 10% for Weaning Weight and Carcass Weight and top 15% for Yearling Weight and Marbling. Market Force is the total package herd sire that should be put at the top of your list.

**3**

**TFOR MILESTONE 241M ET**

03/14/2024 | TFOR 241M | LIM-FLEX(39/35.1) BULL  
HOMO POLLED (P-1) | HOMO BLACK (P-2) | LFM3135748

CJSL DAUNTLESS 6257D ET  
**SSTO KASH MONEY 204K ET**  
RIVERSTONE CHARMED

BASIN PAYWEIGHT 1682  
**GVC JACEE E313**  
G A R FUSION A3008

MAGS ZODIAC  
LLJB ABSOLUTE STYLE 3056A  
TMCK DURHAM WHEAT 6030X  
HSF YOUR FANTASY

BASIN PAYWEIGHT 006S  
21AR O LASS 7017  
G A R FUSION  
G A R 5050 NEW DESIGN A91

**GE-EPDs**

	CE	BW	WW	YW	MK	CM	SC	DC	YG	CW	RE	MB	\$TPI
EPD	11	2.6	79	136	27	6		14	.04	61	.63	.51	137
RANK	45	85	20	10	30	55	-	35	95	2	55	15	5

BW: 85 | ADJ. WW: 688 | ADJ. YW: 1095

Big-time growth bull here! If you are searching for a herd sire prospect that will add pounds, look no further than TFOR Milestone 241M. His explosive growth could be predicted due to his performance EPDs as his Yearling Weight ranks in the top 10% of the breed and Weaning Weight in the top 20% of the breed. He also boasts impressive carcass traits with top a 2% ranking for Carcass Weight and top 5% rank for \$TPI. His sire, SSTO Kash Money 204K, is a bull that consistently sires fast-growing, heavily muscled calves. This combination of presence and numbers project him to be the type of herd bull that produces well-balanced, stout calves year-in and year-out.



LOT 3



**CELL KEYSTONE 2221K ET** | Sire of Lot 4

## 4

### TFOR METUSA 195M

02/28/2024 | TFOR 195M | LIM-FLEX(25/22.1) BULL  
HOMO POLLED (P-2) | HOMO BLACK (P-2) | LFM3135783

TASF CROWN ROYAL 960C ET  
**CELL KEYSTONE 2221K ET**  
PLEASANT VALLEY ELSA 1439

EXAR CONSOLIDATE 2081B  
**ACA LASS 5504**  
ACA LASS 10504

DHVO DEUCE 132R  
TASF WHISKEY LULLABY 357W  
EXAR CLASSEN 1422B  
CHERRY KNOLL ELSA 8014

CONNALLY CONSENSUS 7229  
EXAR SOPHIE 0107  
SITZ UPWARD 307R  
SCR LASS 80532

**%GE-EPDs**

	CE	BW	WW	YW	MK	CM	SC	DC	YG	CW	RE	MB	\$TPI
EPD	2	3.3	82	138	24	1		11	-.1	60	.77	.62	138
RANK	>95	95	15	10	60	>95	-	80	60	3	30	10	4

BW: 102 | ADJ. WW: 572 | ADJ. YW: 1213 | AVG. DMI: 18.01 | ADG: 3.58 | RFI: -2.68 | FCR: 5.03

Efficiency+

## 5

### TFOR MONTEL 143M

01/28/2024 | TFOR 143M | LIM-FLEX(55/49.4) BULL  
HOMO POLLED (T) | HOMO BLACK (T) | LFM3135766

ELCX KINGS LANDING 599 D ET  
**ELCX HIGH TIME 065H ET**  
ELCX ELEVATE 684E ET

LVLS FULL DUTY 2201F  
**CELL KAYLA 2005K**  
TMCK ESTELLE 448E

MAGS XYLOID  
WLR PRADA  
EF XCESSIVE FORCE  
DFLC HBHPC 1S

AUTO HEAVY DUTY 174A  
LVLS DARLA 2206D  
TMCK CAMDEN YARDS 195C  
TMCK REBA 942Y

**%GE-EPDs**

	CE	BW	WW	YW	MK	CM	SC	DC	YG	CW	RE	MB	\$TPI
EPD	9	.5	68	107	30	4	1.3	9	-.14	27	.48	.37	85
RANK	75	40	60	60	15	85	20	95	50	80	75	35	80

BW: 77 | ADJ. WW: 651 | ADJ. YW: 1096 | AVG. DMI: 23.09 | ADG: 3.43 | RFI: 3.62 | FCR: 6.73

## 6

### TFOR MAURICE 226M

03/10/2024 | TFOR 226M | LIM-FLEX(37/33.6) BULL  
HOMO POLLED (P-1) | BLACK | LFM3135812

WULFS HORTON 7358H  
**WULFS KUT ABOVE 7118K**  
WULFS ELDERBERRY 7118E ET

VINTAGE LEGACY 4409  
**GVC DORA F075**  
GVC DORA D114

HUNT CREDENTIALS 37C ET  
WULFS ENCARNASION 7358E  
BIEBER HARD DRIVE Y120  
WULFS YOUR CHOICE 1419Y

V A R GENERATION 2100  
RIVERBEND BLACKCAP W944  
V A R EMPIRE 3037  
GVC DORA X33

**%GE-EPDs**

	CE	BW	WW	YW	MK	CM	SC	DC	YG	CW	RE	MB	\$TPI
EPD	15	-2.1	83	133	28	8		15	-.07	58	.75	.54	139
RANK	5	4	10	15	25	20	-	20	70	4	35	15	4

BW: 79 | ADJ. WW: 612 | ADJ. YW: 1248 | AVG. DMI: 21.41 | ADG: 4.58 | RFI: -0.27 | FCR: 4.68

## 7

### TFOR MINT CONDITION 171M

02/19/2024 | TFOR 171M | LIM-FLEX(40/35.8) BULL  
HOMO POLLED (P-3) | HOMO BLACK (P-1) | LFM3135775

CONNALLY CLARITY  
**KENNY KLEAR**  
ERICA OF ELLSTON R96

COLE GENESIS 86G  
**BRCC JUST IN TIME 1709J ET**  
HBRL EVER CLASSY 7536E ET

CHERRY CREEK LAND GRANT  
BRESHIE OF CONANGA 6988  
BRUNS TOP CUT 373  
ERICA OF ELLSTON M38

HUNT CREDENTIALS 37C ET  
COLE MISS XRATED 354A  
HBRL GENESIS 404B  
AUTO EXCEPTIONAL 282S

**%GE-EPDs**

	CE	BW	WW	YW	MK	CM	SC	DC	YG	CW	RE	MB	\$TPI
EPD	18	-.4	88	146	33	9		18	-.11	56	.92	.71	151
RANK	1	20	5	3	4	10	-	2	60	5	15	2	2

BW: 73 | ADJ. WW: 639 | ADJ. YW: 1247 | AVG. DMI: 21.37 | ADG: 4.13 | RFI: 0.05 | FCR: 5.17



**8**

**TFOR MY WAY 168M**

02/18/2024 | TFOR 168M | LIM-FLEX(43/38.6) BULL  
HOMO POLLED (P-2) | HOMO BLACK (P-2) | LFM3135796

CELL ENVISION 7023E  
**CELL HISTORY BUFF 0245H ET**  
CELL MISS RESPONDER 6078D

AHCC BARN BURNER B907  
PBRS ZSA ZSA 246Z  
COLE ABSOLUTE 05A  
MAGS YODH

BALDRIDGE ELDORADO E050  
**B/D RICE QUEEN 9515**  
ACA QUEEN 2539

BALDRIDGE BRONC  
BALDRIDGE PRATISSA W165  
FLAG DENSITY 00194  
S A V QUEEN 9008

**GE-EPDs**

	CE	BW	WW	YW	MK	CM	SC	DC	YG	CW	RE	MB	\$TPI
EPD	12	1.2	82	140	22	8		14	-19	60	1.09	.34	142
RANK	30	55	15	10	80	20	-	35	35	3	5	40	3
BW: 71   ADJ. WW: 540   ADJ. YW: 1048   AVG. DMI: 21.19   ADG: 4.15   RFI: 1.15   FCR: 5.10													



**CELL HISTORY BUFF 0245H ET** | Sire of Lot 8

**9**

**TFOR MENDOZA 254M**

03/18/2024 | TFOR 254M | LIM-FLEX(28/25.3) BULL  
HOMO POLLED (P-2) | DOUBLE BLACK | LFM3135832

ROMN FLOYD MUDHENKEY 101F  
**SCHILLING JOHN DEERE**  
SCHILLING'S COSMOPOLITAN

AUTO LUCKY GUY 140D ET  
ROMN ARETHA 50A  
EXAR CLASSEN 1422B  
SCHILLING'S WISTERIA LANE

S A V QUARTERBACK 7933  
**BALDCO ELLA LASS 220**  
BALDCO ELLA LASS 602

S A V REGARD 4863  
S A V BLACKCAP MAY 3525  
COLEMAN REGIS 904

**GE-EPDs**

	CE	BW	WW	YW	MK	CM	SC	DC	YG	CW	RE	MB	\$TPI
EPD	12	.1	71	110	24	6		14	-.03	49	.75	.43	118
RANK	30	30	45	55	60	55	-	35	80	15	35	25	20
BW: 76   ADJ. WW: 629   ADJ. YW: 1128   AVG. DMI: 21.58   ADG: 3.45   RFI: 2.61   FCR: 6.26													

**SO YOU CAN'T MAKE IT TO THE SALE IN PERSON? DON'T WORRY**

**We have you covered!**

Watch and Bid Online at **DVAuction**  
Broadcasting Real-Time Auctions

You must register to bid online prior to the sale.

**10**

**TFOR 193M**

02/27/2024 | TFOR 193M | LIM-FLEX(53/47.6) BULL  
HOMO POLLED (P-3) | | LFM3310629

MAGS CABLE  
**MAGS FEDERAL RESERVE ET**  
CJSL 4357B ET

MAGS APPLESEED  
MAGS ZEQUIN  
S A V HESSTON 2217  
AHCC XHIBIT THIS X045

MAGS CABLE  
**CELL HEAVENLY 0526H**  
CELL 6415D

MAGS APPLESEED  
MAGS ZEQUIN  
EBFL YPSILANTI 420Y  
MAGS YORKSHIRE PUDDING

	CE	BW	WW	YW	MK	CM	SC	DC	YG	CW	RE	MB	\$TPI
EPD	14	.1	76	111	34	11	1.4	16	.06	38	.32	.57	93
RANK	10	30	30	50	2	2	10	10	95	40	95	10	65
BW: 76   ADJ. WW: 628   ADJ. YW: 1178   AVG. DMI: 23.10   ADG: 3.55   RFI: 3.02   FCR: 6.51													



**MAGS FEDERAL RESERVE ET** | Sire of Lot 10



**LOT 11**



**CJSL DAUNTLESS 6257D ET** | Sire of Lot 11

**11**

**TFOR MELVIN 147M**

02/05/2024 | TFOR 147M | LIM-FLEX(28/25.2) BULL  
 HOMO POLLED (P-3) | HOMO BLACK (P-1) | LFM3135842

MAGS ZODIAC	MAGS WINSTON
<b>CJSL DAUNTLESS 6257D ET</b>	MAGS XANTHOUS
LLJB ABSOLUTE STYLE 3056A	SILVEIRAS STYLE 9303
	MAGS WASSAIL
T K REDEEM D135	S A V RENOWN 3439
<b>TFOR KVELL 038K</b>	T K TESA U4
B/D RICE MIST 9538	CONNEALY SPUR
	ACA MIST 5557

**GE-EPDs**

	CE	BW	WW	YW	MK	CM	SC	DC	YG	CW	RE	MB	STPI
EPD	11	2.2	84	133	23	5		16	.27	47	-.04	.57	101
RANK	45	80	10	15	70	70	-	10	>95	15	>95	10	50
BW: 74   ADJ. WW: 643   ADJ. YW: 1136   AVG. DMI: 22.97   ADG: 3.55   RFI: 2.93   FCR: 6.47													

Well-balanced is the term that best describes this young herd sire prospect sired by CJSL Dauntless 6257D. He is stout featured, long bodied, wide based and truly impressive when set into motion. Besides his phonetical advantages, he reads well on paper. He ranks in the top 10% for Weaning Weight, Docility and Marbling and top 15% for Yearling Weight and Carcass Weight. His calves will be a hot commodity.

## 12

### TFOR MARITAL AID 262M ET

03/20/2024 | TFOR 262M | LIM-FLEX(44/39.8) BULL  
HOMO POLLED (P-1) | DOUBLE BLACK | LFM3135752

WULFS FIFTY T804F  
**WULFS JOINT VENTURE G579J**  
DHIL TMG 5795C ET

V A R UPSHOT 3017  
**ACA LANTZ BLACKCAP 6580**  
ACA LANTZ BLACKCAP 4502

LFLC BANK ACCOUNT 701B  
TECS DANTEAN 1629D  
MAGS AVIATOR  
PBRS TOUCH ME GENTLY 798T  
EXAR UPSHOT 0562B  
EXAR NEW DESIGN 4212  
S A ROMEO 942  
B/R LANTZ BLACKCAP 1157

**GE-EPDs**

	CE	BW	WW	YW	MK	CM	SC	DC	YG	CW	RE	MB	\$TPI
EPD	10	-3	67	109	25	6		15	-.05	28	.28	.33	83
RANK	60	25	65	55	50	55	-	20	75	75	95	45	85
BW: 80   ADJ. WW: 652   ADJ. YW: 1194   AVG. DMI: 22.47   ADG: 3.74   RFI: 2.30   FCR: 6.00													



**WULFS JOINT VENTURE G579J** | Sire of Lot 12

## 13

### TFOR MONTEZUMA 257M ET

03/18/2024 | TFOR 257M | LIM-FLEX(50/44.7) BULL  
HOMO POLLED (P-1) | BLACK | LFM3136144

LFLC BANK ACCOUNT 701B  
**BOSS LAKE RED EYE 207K ET**  
BOSS LAKE MS MOLLY 814F ET

V A R UPSHOT 3017  
**ACA LANTZ BLACKCAP 6580**  
ACA LANTZ BLACKCAP 4502

WULF'S ZIPLOCK N922Z  
LFLC 701X XTRA GOOD  
COTTAGE LAKE BORDER AGENT  
AUTO OLGA 498A  
EXAR UPSHOT 0562B  
EXAR NEW DESIGN 4212  
S A ROMEO 942  
B/R LANTZ BLACKCAP 1157

**GE-EPDs**

	CE	BW	WW	YW	MK	CM	SC	DC	YG	CW	RE	MB	\$TPI
EPD	10	2.1	67	116	23	7		13	-.1	43	.46	.14	101
RANK	60	75	65	40	70	35	-	50	60	25	80	80	50
BW: 81   ADJ. WW: 707   ADJ. YW: 1237   AVG. DMI: 21.84   ADG: 3.45   RFI: 1.32   FCR: 6.33													

## 14

### TFOR 176M

02/21/2024 | TFOR 176M | LIM-FLEX(43/38.6) BULL  
HOMO POLLED (T) | HOMO BLACK (T) | LFM3135779

CELL ENVISION 7023E  
**CELL HISTORY BUFF 0245H ET**  
CELL MISS RESPONDER 6078D

2XL EXPLORATION 8144  
**B/D RICE QUEEN 0517**  
B/D RICE QUEEN 7584

AHCC BARN BURNER B907  
PBRS ZSA ZSA 246Z  
COLE ABSOLUTE 05A  
MAGS YODH  
2XL EXPLORATION 5230  
2XL PRECISION 4444  
O A UPSTAGE 433  
ACA QUEEN 4522

**GE-EPDs**

	CE	BW	WW	YW	MK	CM	SC	DC	YG	CW	RE	MB	\$TPI
EPD	9	2.4	86	158	20	6		13	-.05	58	.64	.55	136
RANK	75	85	10	1	90	55	-	50	75	4	50	10	5
BW: 76   ADJ. WW: 510   ADJ. YW: 1126   AVG. DMI: 17.56   ADG: 3.56   RFI: -1.00   FCR: 4.94													

Efficiency+

## 15

### TFOR MURDOCH 258M ET

03/18/2024 | TFOR 258M | PUREBRED(93/83.6) BULL  
HOMO POLLED (P-2) | DOUBLE BLACK | NPM3155954

HUNT CREDENTIALS 37C ET  
**COLE GENESIS 86G**  
COLE MISS XRATED 354A

TMCK DURHAM WHEAT 6030X  
**RIVERSTONE LUCKY CHARM 50F ET**  
HSF YOUR FANTASY

HUNT TESTAMENT 40T  
JKTW WHISKEY RIVER 985 W  
MRL X-RATED 014X  
COLE MISS PRODUCTION 874U  
DHVO DEUCE 132R  
MAGS STRAWBERRY PIE  
MAGS WAR ADMIRAL  
HSF TINKERBELL

	CE	BW	WW	YW	MK	CM	SC	DC	YG	CW	RE	MB	\$TPI
EPD	13	-.4	62	90	32	8	.7	12	-.12	20	.52	.4	83
RANK	20	25	60	70	5	20	30	70	>95	65	>95	2	80
BW: 75   ADJ. WW: 568   ADJ. YW: 1184   AVG. DMI: 18.58   ADG: 3.45   RFI: 0.73   FCR: 5.39													



**COLE GENESIS 86G** | Sire of Lot 15



**LOT 16**



**RATLIFF JUMP START 340J ET** | Sire of Lot 16

**16** **TFOR MUCH TO DO 208M ET**

03/03/2024 | TFOR 208M | LIM-FLEX(42/38) BULL  
 HOMO POLLED (T) | HOMO BLACK (T) | LFM3136143

FWLY CAN DO  
**RATLIFF JUMP START 340J ET**  
 RIVERSTONE CHARMED

SCC FIRST-N-GOAL GAF 114  
**JH MISS ABBY D100**  
 P R 1363 132-810

RLBH AIR FORCE ONE  
 CLLL CRYSTAL 334W  
 TMCK DURHAM WHEAT 6030X  
 HSF YOUR FANTASY

DAMERON FIRST CLASS  
 S C C ROYAL BLACKBIRD 502  
 P R ECLIPSE 132 X4124-790  
 P R 810 004-554

**GE-EPDs**

	CE	BW	WW	YW	MK	CM	SC	DC	YG	CW	RE	MB	STPI
EPD	8	1.1	71	113	26	6	-	13	.06	48	.59	.12	89
RANK	85	55	45	45	40	55	-	50	95	15	60	85	75

BW: 84 | ADJ. WW: 665 | ADJ. YW: 1175 | AVG. DMI: 23.32 | ADG: 3.71 | RFI: 2.66 | FCR: 6.29

TFOR Much To Do 208M is a double homozygous herd sire prospect made stout with a wide top and rugged design. This son of Ratliff Jump Start 340J gives you a great look with his deep body and sound structure. The Limousin breed is on fire due in large part to Jumpstart's legendary dam "Riverstone Charmed" who won Supreme Female in Louisville in 2016. On paper, TFOR Much To Do has a well-balanced set of EPDs. If you are searching for a bull that will be an asset to any program, look no further than Much To Do.



**FWLY LHC CAPITAL**  
Sire of Lot 17

**17**

**TFOR MALCOLM 209M ET**

03/03/2024 | TFOR 209M | LIM-FLEX(31/28.2) BULL  
HOMO POLLED (P-1) | BLACK | LFM3155554

MAGS CABLE  
**FWLY LHC CAPITAL ET**  
CLLL CRYSTAL 334W

SIX MILE TAURUS 519A  
**J6 ADVANCE E501**  
JKC BERRY ADVANCE 36W

MAGS APPLESEED  
MAGS ZEQUIN  
WLR DIRECT HIT  
AUTO CHRISTY 8889R

SIX MILE GAME FACE 164Y  
RED SIX MILE SHAWNEE 116T  
RED FINE LINE MULBERRY 26P  
MS ADVANCER OF 4L R230

**GE-EPDs**

	CE	BW	WW	YW	MK	CM	SC	DC	YG	CW	RE	MB	\$TPI
EPD	15	.7	66	100	24	9	1.1	15	-.09	17	.4	.07	58
RANK	5	45	65	75	60	10	25	20	65	95	85	90	>95

BW: 72 | ADJ. WW: 572 | ADJ. YW: 1190 | AVG. DMI: 21.21 | ADG: 3.44 | RFI: 1.11 | FCR: 6.16

**18**

**TFOR MIGUEL 182M**

02/22/2024 | TFOR 182M | LIM-FLEX(40/36.4) BULL  
HOMO POLLED (P-2) | HOMO BLACK (P-2) | LFM3135800

MAGS ANCHOR  
**CJSL DATA BANK 6124D ET**  
AUTO CARMINDA 656S

BALDRIDGE ELDORADO E050  
**B/D RICE BLACKCAP 9539**  
ACA BLACKCAP 6547

LH WAR HERO 195W  
MGS XIPHOPAGOUS  
JCL LODESTAR 27L  
AUTO CARMINDA 872P

BALDRIDGE BRONC  
BALDRIDGE PRATISSA W165  
S A V REGARD 4863  
ACA BLACKCAP 3534

**GE-EPDs**

	CE	BW	WW	YW	MK	CM	SC	DC	YG	CW	RE	MB	\$TPI
EPD	14	.7	82	128	19	8	-	12	-.21	37	.63	.09	92
RANK	10	45	15	20	95	20	-	65	30	45	55	90	70

BW: 72 | ADJ. WW: 628 | ADJ. YW: 1072 | AVG. DMI: 21.66 | ADG: 3.17 | RFI: 2.18 | FCR: 6.84



**CJSL DATA BANK 6124D**  
Sire of Lot 18

## 19

### TFOR MURPHY 185M

02/23/2024 | TFOR 185M | LIM-FLEX(43/38.7) BULL  
HOMO POLLED (P-2) | DOUBLE BLACK | LFM3135847

HUNT CREDENTIALS 37C ET  
**COLE GENESIS 86G**  
COLE MISS XRATED 354A

SCHILLINGR&L FULL DISCLOSURE  
**SCHILLING EVERGREEN 1165**  
SCHILLING'S EVERGREEN 7045

HUNT TESTAMENT 40T  
JKTW WHISKEY RIVER 985 W  
MRL X-RATED 014X  
COLE MISS PRODUCTION 874U

SCHILLINGS R&L CLASSIFIED  
GRUBBS MISS NEWSBREAK 111  
EXAR BLUE CHIP 1877B  
DAMERON EVERGREEN 1135

GE-EPDs

	CE	BW	WW	YW	MK	CM	SC	DC	YG	CW	RE	MB	\$TPI
EPD	14	-1	64	99	28	8		13	-.01	36	.57	.64	108
RANK	10	15	75	75	25	20	-	50	85	50	65	5	35
BW: 71   ADJ. WW: 531   ADJ. YW: 1174   AVG. DMI: 19.23   ADG: 3.43   RFI: 0.91   FCR: 5.61													

## 20

### TFOR MACK 293M ET

03/18/2024 | TFOR 293M | LIM-FLEX(57/51.5) BULL  
HOMO POLLED (P-2) | HOMO BLACK (P-1) | LFM3155526

TASF CROWN ROYAL 960C ET  
**TASF HEINEKEN 405H ET**  
PLEASANT VALLEY ELSA 1439

LH U HAUL 135U  
**AUTO BLISS 265Y**  
WLR UGLY BETTY 432U

DHVO DEUCE 132R  
TASF WHISKEY LULLABY 357W  
EXAR CLASSEN 1422B  
CHERRY KNOLL ELSA 8014

BASIN FRANCHISE P142  
EXLR DUCHESS 7129R  
MAGS SHYLLO  
JCL HEIDI 2S

GE-EPDs

	CE	BW	WW	YW	MK	CM	SC	DC	YG	CW	RE	MB	\$TPI
EPD	9	.5	70	105	18	5	.4	11	-.03	30	.44	.7	101
RANK	75	40	50	65	>95	70	95	80	80	70	80	3	50
BW: 82   ADJ. WW: 567   ADJ. YW: 1093   AVG. DMI: 14.94   ADG: 3.47   RFI: -3.13   FCR: 4.31													

Efficiency+



SSTO KASH MONEY 204K ET | Sire of Lot 21

## 21

### TFOR MAURICIO 246M

03/16/2024 | TFOR 246M | LIM-FLEX(39/35.1) BULL  
HOMO POLLED (P-1) | HOMO BLACK (P-2) | LFM3135815

CJSL DAUNTLESS 6257D ET  
**SSTO KASH MONEY 204K ET**  
RIVERSTONE CHARMED

JINDRA ACCLAIM  
**GVC CHLOE F206**  
GVC CHLOE Z40

MAGS ZODIAC  
LLJB ABSOLUTE STYLE 3056A  
TMCK DURHAM WHEAT 6030X  
HSF YOUR FANTASY

JINDRA 3RD DIMENSION  
JINDRA BLACKBIRD LASSY 1111  
MCATL PURE PRODUCT 903-55  
GVC CHLOE X29

GE-EPDs

	CE	BW	WW	YW	MK	CM	SC	DC	YG	CW	RE	MB	\$TPI
EPD	14	-2.2	65	104	26	9		9	.16	39	.08	.5	94
RANK	10	4	70	65	40	10	-	95	>95	40	>95	15	65
BW: 77   ADJ. WW: 548   ADJ. YW: 1121   AVG. DMI: 18.93   ADG: 3.46   RFI: 0.96   FCR: 5.47													



FWLY CAN DO | Sire of Lot 22

## 22

### TFOR MANIFEST DESTINY 161M

02/14/2024 | TFOR 161M | LIM-FLEX(34/31.1) BULL  
HET POLLED (T) | HOMO BLACK (T) | LFM3135817

RLBH AIR FORCE ONE  
**FWLY CAN DO**  
CLLL CRYSTAL 334W

V A R LEGEND 5019  
**GVC LYNETTE F222**  
GVC LYNETTE C143

EF XCESSIVE FORCE  
EF YAFFA 821Y  
WLR DIRECT HIT  
AUTO CHRISTY 8889R

V A R DISCOVERY 2240  
PF CC&7 HENRIETTA PRIDE 1044  
PINE VIEW/GVC PROVIDER P783  
GVC LYNETTE Y93

	CE	BW	WW	YW	MK	CM	SC	DC	YG	CW	RE	MB	\$TPI
EPD	11	.9	90	145	24	7		10	.03	59	.61	.4	123
RANK	45	50	3	4	60	35	-	90	90	3	55	30	15
BW: 76   ADJ. WW: 672   ADJ. YW: 1097   AVG. DMI: 20.54   ADG: 3.63   RFI: 0.89   FCR: 5.66													



LOT 23

**23**

**TFOR MAXIMUS 256M ET**

03/18/2024 | TFOR 256M | LIM-FLEX(50/44.4) BULL  
HOMO POLLED (P-2) | DOUBLE BLACK | LFM3135751

TASF CROWN ROYAL 960C ET  
**TASF HEINEKEN 405H ET**  
PLEASANT VALLEY ELSA 1439

SILVEIRAS STYLE 9303  
**LLJB ABSOLUTE STYLE 3056A**  
MAGS WASSAIL

DHVO DEUCE 132R  
TASF WHISKEY LULLABY 357W  
EXAR CLASSEN 1422B  
CHERRY KNOLL ELSA 8014  
GAMBLES HOT ROD  
SILVEIRAS ELBA 2520  
DHVO DEUCE 132R  
MAGS MANDA

GE-EPDs

	CE	BW	WW	YW	MK	CM	SC	DC	YG	CW	RE	MB	\$TPI
EPD	8	3.3	68	104	23	5	.7	9	-.09	30	.5	.2	87
RANK	85	95	60	65	70	70	70	95	65	70	75	70	75

BW: 73 | ADJ. WW: 635 | ADJ. YW: 1137 | AVG. DMI: 15.75 | ADG: 3.21 | RFI: -1.79 | FCR: 4.91

**Efficiency+**

Be sure to not overlook this wide-bodied, thick-ended, deep-centered individual. His sire is TASF Heineken 405H, the \$44,500 top-selling lot from the 2021 Thomas & Son Farms Sale. His dam is none other than LLJB Absolute Style 3056A, the daughter of Silveiras Style 9303 and MAGS Wassail. LLJB Absolute Style 3056A was successfully campaigned by Shelby Hennessey and was named the 2014 NAILE Grand Champion Limousin Female. Add this homozygous polled sire to your bull pen to create highly marketable calves.



**LLJB ABSOLUTE STYLE 3056A** | Dam of Lot 23

## 24

### TFOR MARSHALL 181M

02/21/2024 | TFOR 181M | LIM-FLEX(53/47.6) BULL  
HOMO POLLED (P-3) | HOMO BLACK (P-2) | LFM3135741

MAGS ZODIAC  
**CJSL DAUNTLESS 6257D ET**  
LLJB ABSOLUTE STYLE 3056A

MAGS CABLE  
**CELL HILLARY 0508H**  
SSTO ALMOST IT 357A

MAGS WINSTON  
MAGS XANTHOUS  
SILVEIRAS STYLE 9303  
MAGS WASSAIL  
MAGS APPLESEED  
MAGS ZEQUIN  
EXAR UPSHOT 0562B  
MAGS MANUELA

GE-EPDs

	CE	BW	WW	YW	MK	CM	SC	DC	YG	CW	RE	MB	\$TPI
EPD	9	1.4	69	104	28	5	.9	16	.08	42	.32	.64	113
RANK	75	60	55	65	25	70	60	10	>95	30	95	5	25
BW: 77   ADJ. WW: 681   ADJ. YW: 1164   AVG. DMI: 19.50   ADG: 3.79   RFI: -0.27   FCR: 5.15													

## 25

### TFOR MERRITT 211M

03/05/2024 | TFOR 211M | LIM-FLEX(44/39.8) BULL  
HOMO POLLED (P-1) | DOUBLE BLACK | LFM3135792

WULFS FIFTY T804F  
**WULFS JOINT VENTURE G579J**  
DHIL TMG 5795C ET

S A ROMEO 942  
**B/D RICE POLLY 7603**  
CARTERS POLLY 909

LFLC BANK ACCOUNT 701B  
TECS DANTEAN 1629D  
MAGS AVIATOR  
PBRs TOUCH ME GENTLY 798T  
TC TOME0 917  
S A PRIMROSE 428  
S A V NET WORTH 4200  
VDAR POLLY 7061

GE-EPDs

	CE	BW	WW	YW	MK	CM	SC	DC	YG	CW	RE	MB	\$TPI
EPD	9	1.1	72	124	29	7		14	-.06	33	.38	.26	76
RANK	75	55	40	25	20	35	-	35	75	60	90	60	90
BW: 87   ADJ. WW: 613   ADJ. YW: 1059   AVG. DMI: 21.05   ADG: 3.56   RFI: 2.37   FCR: 5.91													

## 26

### TFOR MOST OFTEN 267M ET

03/22/2024 | TFOR 267M | LIM-FLEX(65/58.6) BULL  
HOMO POLLED (P-2) | DOUBLE BLACK | LFM3135753

MAGS XYLOID  
**ELCX KINGS LANDING 599 D ET**  
WLR PRADA

SILVEIRAS STYLE 9303  
**LLJB ABSOLUTE STYLE 3056A**  
MAGS WASSAIL

DHVO DEUCE 132R  
BOHI RHONDA 314R  
MAGSWL USUAL SUSPECT 538U  
AUTO REBECA 292S  
GAMBLES HOT ROD  
SILVEIRAS ELBA 2520  
DHVO DEUCE 132R  
MAGS MANDA

GE-EPDs

	CE	BW	WW	YW	MK	CM	SC	DC	YG	CW	RE	MB	\$TPI
EPD	9	.3	47	73	24	5	.6	10	-.19	21	.39	.3	86
RANK	75	35	>95	>95	60	70	80	90	35	90	90	50	80
BW: 82   ADJ. WW: 612   ADJ. YW: 1092   AVG. DMI: 14.88   ADG: 3.44   RFI: -2.36   FCR: 4.33													

Efficiency+

## 27

### TFOR MALLARD 165M

02/16/2024 | TFOR 165M | LIM-FLEX(46/43.5) BULL  
HOMO POLLED (P-2) | BLACK | LFM3135771

BIEBER DEEP END B597  
**WULFS EMPRIZE 2424E**  
WULFS ZUNI 2424Z

MAGS CABLE COWBOY  
**MAGS JASMINE 223J**  
MAGS DEFINED XEROMA ET

BIEBER ROLLIN DEEP Y118  
BIEBER LAURA 158W  
WZRK GENESIS 532E  
WULFS PLEASURE 4251P  
MAGS YIP  
LHT MS THUNDER 36X  
V A R GENERATION 2100  
MAGS XEROMAS

GE-EPDs

	CE	BW	WW	YW	MK	CM	SC	DC	YG	CW	RE	MB	\$TPI
EPD	12	-2.5	63	104	21	8	1.3	13	-.13	32	.52	.34	94
RANK	30	3	80	65	85	20	20	50	55	60	70	40	65
BW: 75   ADJ. WW: 483   ADJ. YW: 1092													



OLIM KEYSTONE 23K | Sire of Lot 28

## 28

### TFOR MARIO 175M

02/21/2024 | TFOR 175M | LIM-FLEX(68/61.1) BULL  
HOMO POLLED (P-2) | DOUBLE BLACK | LFM3135770

MAGS CABLE  
**OLIM KEYSTONE 23K**  
OLIM FORTUNA 860F

TNGC EMPIRE 736E  
**MAGS JAKARTA 1122J ET**  
MAGS BRUNETTE ET

MAGS APPLESEED  
MAGS ZEQUIN  
WULFS ALLIED FORCE C303A  
CAIT YELLOW ROSE 128Y  
TMCK CASH FLOW 247C  
MAGS BETH ET  
MAGS YIP  
PBRs0111X

	CE	BW	WW	YW	MK	CM	SC	DC	YG	CW	RE	MB	\$TPI
EPD	10	.8	74	115	21	6	1.1	16	-.14	36	.63	.35	100
RANK	60	45	35	40	85	55	35	10	50	50	55	40	50
BW: 81   ADJ. WW: 525   ADJ. YW: 1173   AVG. DMI: 17.38   ADG: 3.41   RFI: -0.70   FCR: 5.10													





# T4 RED ANGUS

We are proud to introduce this outstanding set of Red Angus bulls, built to bring maternal excellence, carcass quality, and long-term value to any operation. By focusing on structurally sound, easy-fleshing genetics with strong pedigrees, we've developed a Red Angus offering that combines real-world functionality with market-driven traits. As we continue to advance our program, we remain committed to providing genetics that drive profitability, and we appreciate the trust you place in T4 Livestock to help move your herd forward.



**MANN RED BOX 55C** | Sire of Lot 29

## 29

### J6RA 429M

3/2/2024 | 429M | 100% AR CAT: A BULL  
PLD | RED | 5042973

SLGN WIDELOAD 920W  
**MANN RED BOX 55C**  
PELTON MISS AJA 0839U

SLGN REGULATOR 503R  
**SLGN STONY'S TEMPEST 778T**  
LCC STONY LA996

UBAR HIGH CAPACITY 224  
MEADO-WEST PERSUASION  
5L NORSEMAN KING 2291  
PELTONS MISS IDA 0547R  
PERKS ADVANCE 121R  
MEADO-WEST BAILEY 019K  
HOLDEN HI HO 574  
BJR MS STONY 4X-516

	ProS	HB	GM	CE	BW	WW	YW	MK	CM	MB	YG	CW	RE
EPD	63	19	44	9	1.6	73	117	26	4	.21	.03	31	.26
RANK	95	96	66	93	95	22	23	44	92	93	28	21	25
BW: 95   ADJ. WW: 671   ADJ. YW: 1365   AVG. DMI: 22.38   ADG: 4.59   RFI: -0.35   FCR: 4.88													



**PIE HASHTAG 1249** | Sire of Lot 30

## 30

### J6RA 231M

1/23/2024 | 231M | 100% AR CAT: A BULL  
PLD | RED | 5046327

RED MRLA RESOURCE 137E  
**PIE HASHTAG 1249**  
BIEBER TILLY 399W

PIE HEISMAN 028  
**J6 SIERA 523K**  
J6 SIERA 116H

MRLA RELOAD 56C  
MRLA MISS 4422B  
BIEBER BOONE 8000  
BIEBER TILLY 303S  
PIE QUARTERBACK 789  
PIE YOGO 882  
WEBR MAXED OUT 627  
SIX MILE SASSY SIERA 156B

	ProS	HB	GM	CE	BW	WW	YW	MK	CM	MB	YG	CW	RE
EPD	90	62	29	12	-1.5	67	105	30	8	.25	.15	23	.05
RANK	70	32	90	59	56	45	47	16	35	89	86	53	65
BW: 74   ADJ. WW: 653   ADJ. YW: 1086   AVG. DMI: 17.55   ADG: 2.74   RFI: -1.00   FCR: 6.41													

Efficiency+



**J6 BLAZER 176J** | Sire of Lot 31

## 31

### J6RA 351M

2/22/2024 | 351M | 100% AR CAT: A BULL  
PLD | RED | 5042263

J6 MAXED OUT 121G  
**J6 BLAZER 176J**  
RED SIXMILE DIAMOND MAY 324C

MANN RED BOX 55C  
**J6 EXTRA 197H**  
RED SIX MILE MS EXTRA 514B

WEBR MAXED OUT 627  
J6 TEMPEST B300  
L83 SUPER DUTY 244Z  
RED GLY DIAMOND 186X  
SLGN WIDELOAD 920W  
PELTON MISS AJA 0839U  
RED SIX MILE RAWHIDE 222X  
RED SIX MILE MS EXTRA 210T

	ProS	HB	GM	CE	BW	WW	YW	MK	CM	MB	YG	CW	RE
EPD	64	23	41	7	1.3	91	149	29	4	.09	.1	53	.42
RANK	95	94	71	98	94	1	1	20	94	99	69	1	7
BW: 84   ADJ. WW: 683   ADJ. YW: 1261   AVG. DMI: 19.19   ADG: 3.73   RFI: -2.31   FCR: 5.15													

Efficiency+



LOT 32

## 32

### J6RA 381M

2/27/2024 | 381M | 100% AR CAT: A BULL  
PLD | RED | 5042329

SLGN WIDELOAD 920W  
**MANN RED BOX 55C**  
PELTON MISS AJA 0839U

RED WILDMAN CIMARRON 605D  
**J6 GUINEVERE 106G**  
JKC BERRY ADVANCE 36W

UBAR HIGH CAPACITY 224  
MEADO-WEST PERSUASION  
5L NORSEMAN KING 2291  
PELTONS MISS IDA 0547R  
RED TAYLOR'S COWBOY 43B  
RED WILDMAN MISS STOCKY 420B  
RED FINE LINE MULBERRY 26P  
MS ADVANCER OF 4L R230

	ProS	HB	GM	CE	BW	WW	YW	MK	CM	MB	YG	CW	RE
EPD	54	8	46	9	1.9	73	117	27	4	.25	.03	33	.33
RANK	98	99	61	93	96	22	24	35	93	89	30	16	18

BW: 82 | ADJ. WW: 647 | ADJ. YW: 1127 | AVG. DMI: 22.34 | ADG: 3.52 | RFI: 2.51 | FCR: 6.35

This guy will bring performance to any cow herd. J6RA 381M stands on a sound set of feet and legs, is attractive in his design with a clean front end, the type that buyers line up for. He is sired by MANN Red Box 55C, currently one of the most talked about Red Angus bulls in the breed. His calves display tremendous quality and style. J6RA 381M posts balanced numerics all the way across the board. This herd sire prospect would be a great addition to your herd bull arsenal.

## 33

### J6RA 415M

3/11/2024 | J6RA 415M | 100% AR CAT: A BULL  
PLD | RED | PENDING

RED MRLA RESOURCE 137E  
**RED U2 TOWNSHIP 17G**  
U2 BEAUTY 113Z

RED LAZY MC COWBOY CUT 26U  
**C-BAR ABIGRACE 266Z**  
C-BROWN&KM ABIGRACE T715

MRLA RELOAD 56C  
MRLA MISS 4422B  
RED U-2 MAMA'S BOY 167X  
RED U-2 BEAUTY 48X  
RED LAZY MC STOUT 30S  
RED LAZY MC STAR 185M  
LJC MISSION STATEMENT P27  
BROWN MS ABIGRACE P7905

	ProS	HB	GM	CE	BW	WW	YW	MK	CM	MB	YG	CW	RE
EST. EPD	51	15	36	7	3.1	68	110	19	4.5	0.20	0.08	33	0.28
ACT BW: 70   ACT. WW: 614   ACT. YW: 1044   AVG. DMI: 21.44   ADG: 3.64   RFI: 1.16   FCR: 5.89													

This bull is an absolute stand-out. He is heavy muscled, ruggedly designed, big-bodied and sound on the move. He is a Red U2 Township 17G son who catches your attention from across the pen. Be sure to not overlook this wide-bodied, level-topped, thick-ended individual. He boasts a well balance numeric profile to enhance his worth come breeding season.



**LOT 34**



**WEBR MAXED OUT 627** | Maternal grandsire of Lot 34

**34**

**J6RA 209M**

1/1/2024 | 209M | 100% AR CAT: A BULL  
PLD | RED | 5042343

RED MRLA RESOURCE 137E  
**PIE HASHTAG 1249**  
BIEBER TILLY 399W

WEBR MAXED OUT 627  
**J6 TEMPEST 149J**  
SLGN STONY'S TEMPEST 778T

MRLA RELOAD 56C  
MRLA MISS 4422B  
BIEBER BOONE 8000  
BIEBER TILLY 303S  
BIEBER ROLLIN DEEP Y118  
MISS BHR COPPER D 946  
SLGN REGULATOR 503R  
LCC STONY LA996

	ProS	HB	GM	CE	BW	WW	YW	MK	CM	MB	YG	CW	RE
EPD	88	54	34	11	-5	69	109	25	7	.2	.13	31	.21
RANK	73	49	83	73	75	36	39	53	44	94	81	21	33

BW: 72 | ADJ. WW: 548 | ADJ. YW: 1317 | AVG. DMI: 19.82 | ADG: 3.49 | RFI: -0.51 | FCR: 5.68

Rugged phenotype with capacity, growth and extra muscle expression. Study this bull's well-balanced numerics that amplify his real-world value. His sire, PIE Hashtag 1249, was the \$100,000 sale feature from the 2022 Pieper Bull Sale. We appreciate this bull for his length and muscle shape. Form and function is built into this Red Angus herd sire prospect. Put him on your shortlist.



**LOT 35**

**35**

**J6RA 219M**

1/18/2024 | 219M | 100% AR CAT. A BULL  
PLD | RED | 5042365

RED MRLA RESOURCE 137E  
**PIE HASHTAG 1249**  
BIEBER TILLY 399W

LMAN KING ROB 8621  
**ROJAS BELLY DANCER 5039**  
SIX MILE LAKOTA 112Y

MRLA RELOAD 56C  
MRLA MISS 4422B  
BIEBER BOONE 8000  
BIEBER TILLY 303S  
LEACHMAN ROBUST 7222  
LEACHMAN ELEANOR  
VGW GAME PLAN 816  
SIX MILE LAKOTO 16W

	ProS	HB	GM	CE	BW	WW	YW	MK	CM	MB	YG	CW	RE
EPD	70	49	22	12	-1.8	59	98	27	8	.15	.13	22	.01
RANK	91	59	95	59	49	73	65	40	31	97	81	56	73
BW: 74   ADJ. WW: 666   ADJ. YW: 1226   AVG. DMI: 20.97   ADG: 3.56   RFI: -1.19   FCR: 5.89													

**Efficiency**

Here is another PIE Hashtag 1249 son that hits you hard. He is level topped with extra center capacity and moves freely off both ends of his skeleton. Mark him high on your list if you are looking for a do-it-all herd sire that will add dollars to your program. Numerically, J6RA 219M carries a well-balanced number set worth studying. This bull's dam is Rojas Belly Dancer 5039, a female sired by the legendary, Leachman King Rob, the maternal grandsire of the famed CT Cita 4060 female. He is ready to hit the pasture and take control of breeding duties.



**SIX MILE LAKOTA 112Y** | Maternal grandam of Lot 35

## 36

### J6RA 329M

2/20/2024 | 329M | 100% AR CAT: A BULL  
PLD | RED | 5046307

J6 MAXED OUT 121G  
**J6 BLAZER 176J**  
RED SIXMILE DIAMOND MAY 324C

SIX MILE GAME FACE 164Y  
**J6 MARY FAY 245F**  
4L MS MARY FAY 002

WEBR MAXED OUT 627  
J6 TEMPEST B300  
L83 SUPER DUTY 244Z  
RED GLY DIAMOND 186X

VGW GAME PLAN 816  
RED SIX MILE LAKOTO 35W  
RED FINE LINE MULBERRY 26P  
MS CHATEAU OF 4L R111

	ProS	HB	GM	CE	BW	WW	YW	MK	CM	MB	YG	CW	RE
EPD	49	11	38	9	.7	81	134	21	5	.12	.15	41	.22
RANK	98	98	77	93	90	7	6	89	84	98	87	5	32
BW: 78   ADJ. WW: 612   ADJ. YW: 1110   AVG. DMI: 19.51   ADG: 3.78   RFI: -0.82   FCR: 5.16													

## 37

### J6RA 386M

2/28/2024 | 386M | 100% AR CAT: A BULL  
PLD | RED | 5042311

PIE HEISMAN 028  
**J6 LOMBARDI 513K**  
J6 EXTRA 184H

SLGN REGULATOR 503R  
**SLGN STONY'S TEMPEST 778T**  
LCC STONY LA996

PIE QUARTERBACK 789  
PIE YOGO 882  
MANN RED BOX 55C  
RED SIX MILE MS EXTRA 514B  
PERKS ADVANCE 121R  
MEADO-WEST BAILEY 019K  
HOLDEN HI HO 574  
BJR MS STONY 4X-516

	ProS	HB	GM	CE	BW	WW	YW	MK	CM	MB	YG	CW	RE
EPD	66	29	38	9	1.4	82	129	27	5	.2	.02	33	.36
RANK	94	90	77	93	94	6	9	41	85	94	24	17	14
BW: 89   ADJ. WW: 545   ADJ. YW: 1208   AVG. DMI: 23.25   ADG: 3.70   RFI: 2.95   FCR: 6.29													



**PIE HOLLYWOOD 222** | Sire of Lot 38

## 38

### J6RA 347M

2/21/2024 | 347M | 100% AR CAT: A BULL  
PLD | RED | 5042265

BROWN CRSB CONFIDENCE G1410  
**PIE HOLLYWOOD 222**  
PIE 0105

L83 SUPER DUTY 244Z  
**RED SIXMILE DIAMOND MAY 324C**  
RED GLY DIAMOND 186X

CONNEALY CONFIDENCE PLUS  
BROWN MS MISSION STMT B542  
PIE QUARTERBACK 789  
C-BAR ABIGRACE 636D  
SIX MILE KING RANCH 721W  
L83 BERTHA 077  
RED SOO LINE KNIGHTHAWK 7369  
RED DIAMOND T MAY 88N 186'06

	ProS	HB	GM	CE	BW	WW	YW	MK	CM	MB	YG	CW	RE
EPD	74	-5	79	12	-8	93	155	30	7	.44	.08	54	.48
RANK	89	99	7	62	70	1	1	15	60	45	56	1	4
BW: 80   ADJ. WW: 615   ADJ. YW: 1210   AVG. DMI: 20.41   ADG: 3.94   RFI: -0.78   FCR: 5.18													



**SIX MILE LAKOTA 112Y** | Maternal grandam of Lot 39

## 39

### J6RA 230M

1/23/2024 | 230M | 100% AR CAT: A BULL  
PLD | RED | 5042339

RED MRLA RESOURCE 137E  
**PIE HASHTAG 1249**  
BIEBER TILLY 399W

LMAN KING ROB 8621  
**ROJAS BELLY DANCER 5039**  
SIX MILE LAKOTA 112Y

MRLA RELOAD 56C  
MRLA MISS 4422B  
BIEBER BOONE 8000  
BIEBER TILLY 303S  
LEACHMAN ROBUST 722Z  
LEACHMAN ELEANOR  
VGW GAME PLAN 816  
SIX MILE LAKOTO 16W

	ProS	HB	GM	CE	BW	WW	YW	MK	CM	MB	YG	CW	RE
EPD	70	49	22	12	-1.8	59	98	27	8	.15	.13	22	.01
RANK	91	59	95	59	49	73	65	40	31	97	81	56	73
BW: 71   ADJ. WW: 592   ADJ. YW: 1144   AVG. DMI: 21.24   ADG: 3.79   RFI: 0.14   FCR: 5.61													



**PIE HASHTAG 1249** | Sire of Lots 40 & 41

**40**

**J6RA 398M**

3/4/2024 | 398M | 100% AR CAT: A BULL  
PLD | RED | 5046365

RED MRLA RESOURCE 137E  
**PIE HASHTAG 1249**  
BIEBER TILLY 399W

SIX MILE & CO JAGGER 780A  
**J6 ANASTASIA 119F**  
LAZYJ ANASTASIA 312-9031

MRLA RELOAD 56C  
MRLA MISS 4422B  
BIEBER BOONE 8000  
BIEBER TILLY 303S  
VGW GAME PLAN 816  
RED SIX MILE CHETA 702W  
LCOC HIGH NOON A093R  
JACOBSON MS TAMY 9031

	ProS	HB	GM	CE	BW	WW	YW	MK	CM	MB	YG	CW	RE
EPD	86	56	30	12	-1.1	64	98	28	8	.26	.1	25	.08
RANK	76	44	89	66	63	58	65	28	37	87	67	44	59

BW: 82 | ADJ. WW: 681 | ADJ. YW: 1135 | AVG. DM: 18.31 | ADG: 3.26 | RFI: -1.63 | FCR: 5.62

**Efficiency+**

Here is a bull that deserves some serious attention. Study his length of body, level top and hind quarter dimension. His sire, PIE Hashtag 1249, has sired standout progeny across the country. Hashtag transmits loose structure, depth of body, muscle expression and ability to his progeny. He boasts an impressive EPD profile that balances up well. This is a head-turning bull you will want to have in your possession!

**41**

**J6RA 232M**

1/24/2024 | 232M | 100% AR CAT: A BULL  
PLD | RED | 5046321

RED MRLA RESOURCE 137E  
**PIE HASHTAG 1249**  
BIEBER TILLY 399W

J6 MAPLE ROAD 104H  
**J6 TEMPEST 543K**  
SLGN STONY'S TEMPEST 778T

MRLA RELOAD 56C  
MRLA MISS 4422B  
BIEBER BOONE 8000  
BIEBER TILLY 303S  
WEBR MAXED OUT 627  
RED SIX MILE MS EXTRA 367B  
SLGN REGULATOR 503R  
LCC STONY LA996

	ProS	HB	GM	CE	BW	WW	YW	MK	CM	MB	YG	CW	RE
EPD	82	49	32	12	-1.7	63	101	26	8	.18	.12	29	.18
RANK	81	58	85	63	52	61	59	49	37	96	75	26	39

BW: 63 | ADJ. WW: 653 | ADJ. YW: 1212 | AVG. DM: 21.05 | ADG: 3.24 | RFI: 0.72 | FCR: 6.49

This herd sire prospect is an absolute eye-catcher. Stout features, a long body and wide base perfectly describe him. His sire, PIE Hashtag 1249, is the \$100,000 sale feature from the 2022 Pieper Bull Sale, who was one of the most anticipated sires for the 2023 calf crop and has been delivering on the highest of expectations. They are known for having tremendous base width, center capacity and muscle expression. On paper, J6RA 232M posts a balanced set of EPDs. This guy is going to do big things for the winning bidder. Make that be you.



LOT 42



PIE HASHTAG 1249 | Sire of Lot 42

## 42

### J6RA 206M

1/1/2024 | 206M | 100% AR CAT: A BULL  
PLD | RED | 5042387

RED MRLA RESOURCE 137E  
**PIE HASHTAG 1249**  
BIEBER TILLY 399W

SLGN REGULATOR 503R  
**SLGN STONY'S TEMPEST 778T**  
LCC STONY LA996

MRLA RELOAD 56C  
MRLA MISS 4422B  
BIEBER BOONE 8000  
BIEBER TILLY 303S  
PERKS ADVANCE 121R  
MEADO-WEST BAILEY 019K  
HOLDEN HI HO 574  
BJR MS STONY 4X-516

	ProS	HB	GM	CE	BW	WW	YW	MK	CM	MB	YG	CW	RE
EPD	70	40	29	11	.2	67	107	23	7	.12	.09	30	.19
RANK	92	75	89	80	85	45	44	80	47	98	61	24	36

BW: 72 | ADJ. WW: 613 | ADJ. YW: 1253 | AVG. DMI: 17.62 | ADG: 4.37 | RFI: -5.41 | FCR: 4.03

#### Efficiency+

Here is a bull that will add momentum to your program in a hurry with his impressive -5.41 RFI number. He's deep bodied, long and flexible in his stride and strong in his top. This PIE Hashtag 1249 son has a balanced set of numbers and is sure to impress even the most critical cattleman. Superior genetics and tremendous phenotypic qualities—it's all here! This bull will be one we'll hear more from after his first progeny hit the ground.





**LOT 43**

**43**

**J6RA 334M**

2/20/2024 | 334M | 100% AR CAT: A BULL  
PLD | RED | 5042275

BROWN CRSB CONFIDENCE G1410  
**PIE HOLLYWOOD 222**  
PIE 0105

WEBR MAXED OUT 627  
**J6 TEMPEST 149J**

SLGN STONY'S TEMPEST 778T

CONNELY CONFIDENCE PLUS  
BROWN MS MISSION STMT B542  
PIE QUARTERBACK 789  
C-BAR ABIGRACE 636D  
BIEBER ROLLIN DEEP Y118  
MISS BHR COPPER D 946  
SLGN REGULATOR 503R  
LCC STONY LA996

	ProS	HB	GM	CE	BW	WW	YW	MK	CM	MB	YG	CW	RE
EPD	93	20	73	13	-1.1	93	149	27	7	.48	.08	53	.51
RANK	66	96	11	41	63	1	1	40	45	36	57	1	3

BW: 83 | ADJ. WW: 609 | ADJ. YW: 1217 | AVG. DMI: 16.72 | ADG: 3.66 | RFI: -4.21 | FCR: 4.57

**Efficiency+**

A powerhouse of a herd sire prospect that deserves your attention with single digit rankings for his growth EPDs. This PIE Hollywood 222 son has profitability written all over him and when you see him in person, you'll understand why. We've always loved his soggy build, the substance of bone he stands on and his commanding presence. His Weaning Weight, Yearling Weight and Carcass Weight EPDs are in the top 1% and his Ribeye Area is in the top 3% of the breed. With splendid growth EPDs like these, he can take your herd to the top in a flash.



**PIE HOLLYWOOD 222** | Sire of Lot 43



**PIE HASHTAG 1249** | Sire of Lot 44

## 44

### J6RA 288M

2/15/2024 | 288M | 100% AR CAT: A BULL  
PLD | RED | 5042395

RED MRLA RESOURCE 137E  
**PIE HASHTAG 1249**  
BIEBER TILLY 399W

9 MILE FRANCHISE 6305  
**PIE BONNE BEL 852**  
PIE BONNE BEL 6232

MRLA RELOAD 56C  
MRLA MISS 4422B  
BIEBER BOONE 8000  
BIEBER TILLY 303S  
SPUR FRANCHISE OF GARTON  
C-BAR ABIGRAACE Y11  
LSF SAGA 1040Y  
PIE BONNE BEL 2173

	ProS	HB	GM	CE	BW	WW	YW	MK	CM	MB	YG	CW	RE
EPD	102	67	35	13	-2	66	109	36	9	.2	.12	30	.31
RANK	52	22	82	45	46	49	39	1	11	94	76	26	20

BW: 63 | ADJ. WW: 645 | ADJ. YW: 1173 | AVG. DMI: 25.36 | ADG: 3.73 | RFI: 4.47 | FCR: 6.80



**MAGS FEDERAL RESERVE ET** | Sire of Lot 45

## 45

### TFOR MAGIC BOX 223M

03/09/2024 | TFOR 223M | LIM-FLEX(44/39.8) BULL  
HOMO POLLED (T) | HOMO BLACK (T) | LFM3135979

MAGS CABLE  
**MAGS FEDERAL RESERVE ET**  
CJSL 4357B ET

J BAR J DELEGATE 621D ET  
**CELL JADE 1028J**  
MAGS GLORIFY 223G

MAGS APPLESEED  
MAGS ZEQUIN  
S A V HESSTON 2217  
AHCC XHIBIT THIS X045  
G A R PROPHET  
JONK POLL UNIQUE 70U  
BALDRIDGE COLONEL C251  
MAGS ENTERTAINING COWGIRL

	CE	BW	WW	YW	MK	CM	SC	DC	YG	CW	RE	MB	\$TPI
EPD	14	-8	65	113	29	12	1.1	16	.21	45	.21	.81	105
RANK	10	15	70	45	20	1	25	10	>95	20	>95	1	40

BW: 74 | ADJ. WW: 567 | ADJ. YW: 1125 | AVG. DMI: 21.76 | ADG: 3.63 | RFI: 2.29 | FCR: 5.99



**COLE GENESIS 86G** | Sire of Lot 46

## 46

### TFOR MEMPHIS 162M

02/15/2024 | TFOR 162M | LIM-FLEX(43/38.7) BULL  
HOMO POLLED (P-2) | DOUBLE BLACK | LFM3135843

HUNT CREDENTIALS 37C ET  
**COLE GENESIS 86G**  
COLE MISS XRATED 354A

T K REDEEM D135  
**TFOR KWANZAA 044K**  
B/D RICE LUCY 7565

HUNT TESTAMENT 40T  
JKTW WHISKEY RIVER 985 W  
MRL X-RATED 014X  
COLE MISS PRODUCTION 874U  
S A V RENOWN 3439  
T K TESA U4  
EXAR CONSOLIDATE 2081B  
BR LUCY 334 A

	CE	BW	WW	YW	MK	CM	SC	DC	YG	CW	RE	MB	\$TPI
EPD	10	-6	82	137	30	6	-	15	.07	51	.46	.61	120
RANK	60	20	15	10	15	55	-	20	95	10	80	10	20

BW: 78 | ADJ. WW: 628 | ADJ. YW: 1089 | AVG. DMI: 18.41 | ADG: 3.38 | RFI: -0.27 | FCR: 5.45

**47**

**J6RA 281M**

2/13/2024 | 281M | 100% AR CAT: 2 BULL  
PLD | R | 5042381

BROWN CRSB CONFIDENCE G1410  
PIE HOLLYWOOD 222

CONNELLY CONFIDENCE PLUS

**OUT OF SALE**

J6 TEMPEST B300  
4L MS MARY FAY 002  
RED FINE LINE MULBERRY 26P  
MS CHATEAU OF 4L R111

	ProS	HB	GM	CE	BW	WW	YW	MK	CM	MB	YG	CW	RE
EPD	99	28	71	15	-2	91	150	25	8	.46	.13	53	.46
RANK	57	90	14	19	46	1	1	54	28	41	79	1	5
BW: 78   ADJ. WW: 578   ADJ. YW: 1158													

**48**

**J6RA 216M**

1/12/2024 | 216M | 100% AR CAT: A BULL  
PLD | RED | 5042337

RED MRLA RESOURCE 137E  
PIE HASHTAG 1249  
BIEBER TILLY 399W

MRLA RELOAD 56C  
MRLA MISS 4422B  
BIEBER BOONE 8000  
BIEBER TILLY 303S

WEBR MAXED OUT 627  
J6 TEMPEST 149J  
SLGN STONY'S TEMPEST 778T

BIEBER ROLLIN DEEP Y118  
MISS BHR COPPER D 946  
SLGN REGULATOR 503R  
LCC STONY LA996

	ProS	HB	GM	CE	BW	WW	YW	MK	CM	MB	YG	CW	RE
EPD	88	54	34	11	-5	69	109	25	7	.2	.13	31	.21
RANK	73	49	83	73	75	36	39	53	44	94	81	21	33
BW: 78   ADJ. WW: 508   ADJ. YW: 1080   AVG. DMI: 19.12   ADG: 3.43   RFI: -0.36   FCR: 5.57													

**49**

**J6RA 272M**

2/12/2024 | 272M | 100% AR CAT: A BULL  
PLD | RED | 5046303

J6 NEW GENERATION 207H  
J6 BULLETPROOF 542K  
J6 MARY FAY 245F

MANN RED BOX 55C  
RED SIX MILE MS EXTRA 514B  
SIX MILE GAME FACE 164Y  
4L MS MARY FAY 002

SIX MILE & CO JAGGER 780A  
J6 ANNE 130F  
RIGGINS ANNE 903

VGW GAME PLAN 816  
RED SIX MILE CHETA 702W  
RIGGINS PRI-DESTINED 611  
DI ANNE 343

	ProS	HB	GM	CE	BW	WW	YW	MK	CM	MB	YG	CW	RE
EPD	66	33	33	13	-1.2	58	90	25	7	.31	.08	15	0
RANK	94	85	84	41	61	79	79	54	41	79	56	80	75
BW: 82   ADJ. WW: 618   ADJ. YW: 1050   AVG. DMI: 15.12   ADG: 3.36   RFI: -3.70   FCR: 4.50													

Efficiency+

**50**

**J6RA 403M**

3/6/2024 | J6RA 403M | 100% AR CAT: A BULL  
PLD | RED | PENDING

RED MRLA RESOURCE 137E  
RED U2 TOWNSHIP 17G  
U2 BEAUTY 113Z

MRLA RELOAD 56C  
MRLA MISS 4422B  
RED U-2 MAMA'S BOY 167X  
RED U-2 BEAUTY 48X

RED LAZY MC COWBOY CUT 26U  
C-BAR ABIGRACE 266Z  
C-BROWN&KM ABIGRACE T715

RED LAZY MC STOUT 30S  
RED LAZY MC STAR 185M  
LJC MISSION STATEMENT P27  
BROWN MS ABIGRACE P7905

	ProS	HB	GM	CE	BW	WW	YW	MK	CM	MB	YG	CW	RE
EST. EPD	51	15	36	7	3.1	68	110	19	4.5	0.20	0.08	33	0.28
ACT BW: 85   ACT. WW: 606   ACT. YW: 1024   AVG. DMI: 20.92   ADG: 3.39   RFI: 1.63   FCR: 6.17													

**51**

**J6RA 355M**

2/22/2024 | 355M | 100% AR CAT: A BULL  
PLD | RED | 5042259

BROWN CRSB CONFIDENCE G1410  
PIE HOLLYWOOD 222  
PIE 0105

CONNELLY CONFIDENCE PLUS  
BROWN MS MISSION STMT B54Z  
PIE QUARTERBACK 789  
C-BAR ABIGRACE 636D

RED FINE LINE MULBERRY 26P  
J6 ELENORE 236H  
WEBR MS SUE ELLEN 18S

RED COMPASS MULBERRY 449M  
RED DUS FAYETTE 8G  
WEBR DOC HOLLIDAY 2N  
PRESSER'S DAISY 201

	ProS	HB	GM	CE	BW	WW	YW	MK	CM	MB	YG	CW	RE
EPD	105	32	73	14	-1.8	91	149	28	8	.53	.1	51	.31
RANK	48	86	12	28	49	1	1	26	31	28	69	1	20
BW: 70   ADJ. WW: 550   ADJ. YW: 1093   AVG. DMI: 15.97   ADG: 3.90   RFI: -4.03   FCR: 4.10													

Efficiency+



PIE HOLLYWOOD 222 | Sire of Lot 51



**HUNT CREDENTIALS 37C ET** | Paternal grandsire of Lot 52

## 52

### TFOR MATEO 174M

02/02/2024 | TFOR 174M | LIM-FLEX(64/57) BULL  
HOMO POLLED (P-2) | DOUBLE BLACK | LFM3135828

HUNT CREDENTIALS 37C ET  
**COLE GENESIS 86G**  
COLE MISS XRATED 354A

CELL DENALI 6405D  
**CELL HONEY 0518H**  
CELL 7348E ET

HUNT TESTAMENT 40T  
JKTW WHISKEY RIVER 985 W  
MRL X-RATED 014X  
COLE MISS PRODUCTION 874U  
EBFL YPSILANTI 420Y  
MAGS ANNIE  
PVF INSIGHT 0129  
MAGS XUZETTE

	CE	BW	WW	YW	MK	CM	SC	DC	YG	CW	RE	MB	\$TPI
EPD	12	.3	72	121	29	8	.8	11	-.25	55	1.21	.32	142
RANK	30	35	40	30	20	20	60	80	25	5	3	45	3

BW: 74 | ADJ. WW: 554 | ADJ. YW: 1096 | AVG. DMI: 19.99 | ADG: 4.49 | RFI: -1.01 | FCR: 4.45



**J6 MAXED OUT 121G** | Sire of Lot 53

## 53

### J6RA 249M

2/2/2024 | 249M | 100% AR CAT: A BULL  
PLD | RED | 5042363

WEBR MAXED OUT 627  
**J6 MAXED OUT 121G**  
J6 TEMPEST B300

RED WRIGHTS 832S IRON HIDE 4  
**DAMAR FIREFLY 4Z C183**  
RRA FIREFLY 75M 191

BIEBER ROLLIN DEEP Y118  
MISS BHR COPPER D 946  
WEBR TC CARD SHARK 1015  
SLGN STONY'S TEMPEST 778T  
RED SIX MILE SAKIC 832S  
RED BWB FAYE 48N OF TREND  
RED CROWFOOT OLE'S OSCAR  
RED FL FIREFLY 75M

	ProS	HB	GM	CE	BW	WW	YW	MK	CM	YG	CW	RE	
EPD	80	41	39	10	1.3	89	146	30	6	.18	.15	46	.25
RANK	83	73	75	82	94	2	2	12	70	96	88	3	26

BW: 82 | ADJ. WW: 653 | ADJ. YW: 1167 | AVG. DMI: 23.11 | ADG: 3.81 | RFI: 1.66 | FCR: 6.07



**COLE GENESIS 86G** | Sire of Lot 54

## 54

### TFOR MAXWELL 153M

02/09/2024 | TFOR 153M | LIM-FLEX(43/38.7) BULL  
HOMO POLLED (P-2) | DOUBLE BLACK | LFM3135840

HUNT CREDENTIALS 37C ET  
**COLE GENESIS 86G**  
COLE MISS XRATED 354A

WILKS ENRICH  
**TFOR KENYA 024K**  
GVC ERICA E024

HUNT TESTAMENT 40T  
JKTW WHISKEY RIVER 985 W  
MRL X-RATED 014X  
COLE MISS PRODUCTION 874U  
SYDGEN ENHANCE  
EZAR LADY IDA 7185  
V A R DISCOVERY 2240  
GVC ERICA B204

	CE	BW	WW	YW	MK	CM	SC	DC	YG	CW	RE	MB	\$TPI
EPD	14	-.6	82	131	34	10		11	.06	64	.55	.75	158
RANK	10	20	15	15	2	5	-	80	95	2	65	2	1

BW: 74 | ADJ. WW: 614 | ADJ. YW: 1177 | AVG. DMI: 25.18 | ADG: 3.82 | RFI: 4.53 | FCR: 6.60

## 55

### J6RA 225M

1/20/2024 | 225M | 100% AR CAT: A BULL  
PLD | RED | 5042359

RED MRLA RESOURCE 137E  
**PIE HASHTAG 1249**  
BIEBER TILLY 399W

LMAN KING ROB 8621  
**ROJAS BELLY DANCER 5039**  
SIX MILE LAKOTA 112Y

MRLA RELOAD 56C  
MRLA MISS 4422B  
BIEBER BOONE 8000  
BIEBER TILLY 303S  
LEACHMAN ROBUST 7222  
LEACHMAN ELEANOR  
VGW GAME PLAN 816  
SIX MILE LAKOTO 16W

	ProS	HB	GM	CE	BW	WW	YW	MK	CM	MB	YG	CW	RE
EPD	70	49	22	12	-1.8	59	98	27	8	.15	.13	22	.01
RANK	91	59	95	59	49	73	65	40	31	97	81	56	73
BW: 76   ADJ. WW: 577   ADJ. YW: 1195   AVG. DMI: 24.42   ADG: 4.35   RFI: 2.50   FCR: 5.62													



SIX MILE LAKOTA 112Y | Maternal grandam of Lot 55

## 56

### J6RA 268M

2/10/2024 | 268M | 100% AR CAT: A BULL  
PLD | RED | 5046301

J6 NEW GENERATION 207H  
**J6 BULLETPROOF 542K**  
J6 MARY FAY 245F

STEVENSON TURNING POINT  
**J6 TEMPEST 438J**  
SLGN STONY'S TEMPEST 778T

MANN RED BOX 55C  
RED SIX MILE MS EXTRA 514B  
SIX MILE GAME FACE 164Y  
4L MS MARY FAY 002  
PLATTEMERE WEIGH UP K360  
STEVENSON PRIDE I167X  
SLGN REGULATOR 503R  
LCC STONY LA996

	ProS	HB	GM	CE	BW	WW	YW	MK	CM	MB	YG	CW	RE
EPD	81	24	56	13	-1.8	66	109	22	7	.31	.04	33	.34
RANK	82	93	35	41	49	49	39	83	58	79	37	18	17
BW: 68   ADJ. WW: 583   ADJ. YW: 1180   AVG. DMI: 13.97   ADG: 3.43   RFI: -4.63   FCR: 4.07													

Efficiency+



J6 BULLETPROOF 542K | Sire of Lot 56

## 57

### TFOR MICKEY 159M

02/13/2024 | TFOR 159M | LIM-FLEX(56/50.1) BULL  
HOMO POLLED (T) | HET BLACK (T) | LFM3156520

MAGS CABLE  
**OLIM KEYSTONE 23K**  
OLIM FORTUNA 860F

TNGC DEVOTION 643D  
**CELL JETSETTER 1013J**  
PBRS 659D ET

MAGS APPLESEED  
MAGS ZEQUIN  
WULFS ALLIED FORCE C303A  
CAIT YELLOW ROSE 128Y  
ELMW XPEDIENT 4X  
MAGS BLUEBELL ET  
SBLX FIRST CLASS  
FLLR TIGER LILY

	CE	BW	WW	YW	MK	CM	SC	DC	YG	CW	RE	MB	\$TI
EPD	16	-2	72	109	20	10	1.2	15	.01	42	.42	.42	111
RANK	3	5	40	55	90	5	25	20	90	30	85	25	30
BW: 74   ADJ. WW: 524   ADJ. YW: 1168   AVG. DMI: 18.65   ADG: 4.47   RFI: -2.45   FCR: 4.17													

Efficiency+



MAGS CABLE | Paternal grandsire of Lot 57



**LOT 58**



**WEBR TC CARD SHARK 1015** | Maternal grandsire of Lot 58

**58**

**J6RA 211M**

1/2/2024 | 211M | 100% AR CAT: A BULL  
PLD | RED | 5042379

RED MRLA RESOURCE 137E  
**PIE HASHTAG 1249**  
BIEBER TILLY 399W

MRLA RELOAD 56C  
MRLA MISS 4422B  
BIEBER BOONE 8000  
BIEBER TILLY 303S

WEBR TC CARD SHARK 1015  
**J6 TEMPEST B300**  
SLGN STONY'S TEMPEST 778T

WEBR DOC HOLLIDAY 2N  
PFFR MS NYACK 237  
SLGN REGULATOR 503R  
LCC STONY LA996

	ProS	HB	GM	CE	BW	WW	YW	MK	CM	MB	YG	CW	RE
EPD	74	44	30	12	-1.7	62	104	25	8	.13	.14	28	.19
RANK	89	68	88	68	52	64	52	57	31	98	83	29	36

BW: 70 | ADJ. WW: 544 | ADJ. YW: 1033 | AVG. DMI: 17.45 | ADG: 4.08 | RFI: -3.38 | FCR: 4.28

**Efficiency+**

Consistency is the name of the game with J6RA 211M. He comes from some of the most consistent genetics in our program. His dam, J6 Tempest B300, is one of our highest achieving donors and a daughter of WEBR TC Card Shark 1015. PIE Hashtag 1249 is always a top-notch producer and genetics like these are the ones that all cattlemen aspire to have in their herd. We love this bull's look from the ground u—he's sure footed, expressively muscled and has a unique front one-third design.

## 59

### TFOR MILO 164M

02/16/2024 | TFOR 164M | PERCENTAGE(76/67.6) BULL  
HOMO POLLED (P-3) | DOUBLE BLACK | NXM3135777

HUNT CREDENTIALS 37C ET  
**COLE GENESIS 86G**  
COLE MISS XRATED 354A

AHCC EASY RIDER 5594E  
**COLE MISS EASY RIDER 238K**  
COLE MISS ARCHITECT 828F ET

HUNT TESTAMENT 40T  
JKTW WHISKEY RIVER 985 W  
MRL X-RATED 014X  
COLE MISS PRODUCTION 874U  
ELMW ALFALFA 103B  
AHCC MISS Y AXIS C5594 ET  
COLE ARCHITECT 08A  
COLE MISS TRAVELER 029X

	CE	BW	WW	YW	MK	CM	SC	DC	YG	CW	RE	MB	\$TPI
EPD	10	.8	81	123	29	7	.7	13	-.19	47	1.15	.59	133
RANK	60	50	10	15	15	40	55	45	60	15	15	10	5
BW: 80   ADJ. WW: 678   ADJ. YW: 1228   AVG. DMI: 22.10   ADG: 3.77   RFI: 1.16   FCR: 5.87													



**COLE GENESIS 86G** | Sire of Lots 59 & 60

## 60

### TFOR MILTON 157M

02/13/2024 | TFOR 157M | LIM-FLEX(43/38.7) BULL  
HOMO POLLED (P-2) | DOUBLE BLACK | LFM3135841

HUNT CREDENTIALS 37C ET  
**COLE GENESIS 86G**  
COLE MISS XRATED 354A

DEER VALLEY GROWTH FUND  
**TFOR KELCEY 031K**  
GVC KAYLEE E201

HUNT TESTAMENT 40T  
JKTW WHISKEY RIVER 985 W  
MRL X-RATED 014X  
COLE MISS PRODUCTION 874U  
BASIN PAYWEIGHT 1682  
DEER VALLEY RITA 36113  
G A R JEREMIAH  
GVC KAYLEE A19

	CE	BW	WW	YW	MK	CM	SC	DC	YG	CW	RE	MB	\$TPI
EPD	18	-1.4	74	121	30	12	SC	12	.13	57	.44	.55	134
RANK	1	10	35	30	15	1	-	65	>95	4	80	10	10
BW: 68   ADJ. WW: 589   ADJ. YW: 1068   AVG. DMI: 17.63   ADG: 2.94   RFI: -1.22   FCR: 6.00													

Efficiency+



**DEER VALLEY GROWTH FUND** | Maternal grandsire of Lot 60

## 61

### TFOR MORTIMER 250M

03/17/2024 | TFOR 250M | LIM-FLEX(28/25.3) BULL  
HOMO POLLED (P-2) | DOUBLE BLACK | LFM3135805

ROMN FLOYD MUDHENKEY 101F  
**SCHILLING JOHN DEERE**  
SCHILLING'S COSMOPOLITAN

BASIN PAYWEIGHT 1682  
**GVC MADISYN E073**  
GVC MADISYN C095

AUTO LUCKY GUY 140D ET  
ROMN ARETHA 50A  
EXAR CLASSEN 1422B  
SCHILLING'S WISTERIA LANE  
BASIN PAYWEIGHT 006S  
21AR O LASS 7017  
CONNEALY IN FOCUS 4925  
GVC MISS MISSING LINK W45

	CE	BW	WW	YW	MK	CM	SC	DC	YG	CW	RE	MB	\$TPI
EPD	12	-.8	71	109	29	7	SC	10	.07	38	.51	.54	94
RANK	30	15	45	55	20	35	-	90	95	40	70	15	60
BW: 79   ADJ. WW: 632   ADJ. YW: 1152   AVG. DMI: 23.29   ADG: 3.51   RFI: 3.47   FCR: 6.64													



**SCHILLING JOHN DEERE** | Sire of Lot 61



**LOT 62**



**PIE HOLLYWOOD 222** | Sire of Lot 62

**62**

**J6RA 428M**

2/23/2024 | 428M | 100% AR CAT: A BULL  
PLD | RED | 5042971

BROWN CRSB CONFIDENCE G1410  
**PIE HOLLYWOOD 222**  
PIE 0105

RED MINBURN COPENHAGEN 3Y  
**J6 EXTRA 216J**  
RED SIX MILE MS EXTRA 514B

CONNELLY CONFIDENCE PLUS  
BROWN MS MISSION STMT B542  
PIE QUARTERBACK 789  
C-BAR ABIGRACE 636D  
RED RMJ REDMAN 1T  
MINBURN MAY 112M  
RED SIX MILE RAWHIDE 222X  
RED SIX MILE MS EXTRA 210T

	ProS	HB	GM	CE	BW	WW	YW	MK	CM	MB	YG	CW	RE
EPD	96	37	59	14	-1.3	89	144	28	7	.29	.04	52	.46
RANK	62	80	30	35	58	2	2	31	41	83	36	1	5

BW: 72 | ADJ. WW: 563 | ADJ. YW: 1278 | AVG. DMI: 18.66 | ADG: 4.38 | RFI: -3.11 | FCR: 4.26

**Efficiency**

you're looking for a front pasture bull, this beast of a bull certainly will be just that. This PIE Hollywood 222 son is from our tremendous female, J6 Extra 216J. He's not just a masterpiece to look at, he has the growth numbers to bring efficiency to your bottom line. This young herd sire prospect ranks in the top 1% of the breed for his Carcass Weight EPD and in the top 2% for both Weaning Weight and Yearling Weight. He truly checks all of the important boxes with a more than exceptional design and build and growth figures that translate into a set of calves the neighbors will envy.



## LIMOUSIN/LIN-FLEX SIRE

SIRE	CE	BW	WW	YW	MK	CM	SC	DC	YG	CW	RE	MB	\$TPI
<b>CJSL DAUNTLESS 6257D ET</b> MAGS ZODIAC x LLJB ABSOLUTE STYLE 3056A   LIM-FLEX(56/50.4)   Homo Black   Homo Polled   LFM2106173	12	-0.2	67	107	19	6	0.5	19	0.24	32	-0.09	0.54	85
<b>MAGS FEDERAL RESERVE ET</b> MAGS CABLE x CJSL 4357B ET   LIM-FLEX(50/44.7)   Homo Black   Homo Polled   LFM2140299	13	0.4	69	101	32	14	1.4	16	0.15	31	0.06	0.71	82
<b>TASF HEINEKEN 405H ET</b> TASF CROWN ROYAL 960C ET x PLEASANT VALLEY ELSA 1439   LIM-FLEX(50/44.1)   Homo Black   Homo Polled   LFM2290283	5	4.1	67	107	22	3	0.5	9	-0.10	33	0.71	0.31	89
<b>FWLY LHC CAPITAL ET</b> MAGS CABLE x CLLL CRYSTAL 334W   LIM-FLEX(62/56.5)   Homo Black   Homo Polled   LFM2331900	12	2.8	76	117	28	7	1.5	14	-0.20	30	0.72	0.23	88
<b>WULFS KUT ABOVE 7118K</b> WULFS HORTON 7358H x WULFS ELDERBERRY 7118E ET   LIM-FLEX(75/67.2)   Red   Homo Polled   LFM2517733	8	3.3	111	170	33	4	2.2	19	-0.36	75	1.31	0.27	170
<b>OLIM KEYSTONE 23K</b> MAGS CABLE x OLIM FORTUNA 860F   LIM-FLEX(75/65.9)   Het Black   Homo Polled   LFM2521196	15	0.3	71	107	31	10	1.1	14	-0.24	25	0.86	0.28	90
<b>CELL KEYSTONE 2221K ET</b> TASF CROWN ROYAL 960C ET x PLEASANT VALLEY ELSA 1439   LIM-FLEX(50/44.1)   Homo Black   Homo Polled   LFM2522438	2	4.2	78	122	23	1	1.4	6	-0.17	41	0.78	0.32	99
<b>COLE GENESIS 86G</b> HUNT CREDENTIALS 37C ET x COLE MISS XRATED 354A   PUREBRED(87/77.3)   Black   Homo Polled   NPM2174722	16	-1.4	66	103	33	10	0.5	12	-0.07	37	0.58	0.68	123
<b>CELL HISTORY BUFF 0245H ET</b> CELL ENVISION 7023E x CELL MISS RESPONDER 6078D   PUREBRED(87/77.1)   Homo Black   Homo Polled   NPM2326025	6	3.6	85	144	23	4	2.3	11	-0.44	50	1.37	0.31	137
<b>WULFS JOINT VENTURE G579J</b> WULFS FIFTY T804F x DHIL TMG 5795C ET   PUREBRED(89/79.6)   Black   Homo Polled   NPM2494524	6	2.7	67	107	31	3	0.5	14	-0.23	16	0.57	-0.03	54
<b>CJSL DATA BANK 6124D ET</b> MAGS ANCHOR x AUTO CARMINDA 656S   PERCENTAGE(81/72.8)   Homo Black   Homo Polled   NXM2106141	10	1.7	85	131	13	7	0.3	15	-0.20	35	0.56	0.10	92
<b>RATLIFF JUMP START 340J ET</b> FWLY CAN DO x RIVERSTONE CHARMED   PERCENTAGE(84/75.9)   Homo Black   Double Polled   NXM2446915	10	1.9	70	105	27	5	1.2	14	-0.25	35	1.04	-0.16	84
<b>SSTO KASH MONEY 204K ET</b> CJSL DAUNTLESS 6257D ET x RIVERSTONE CHARMED   PERCENTAGE(78/70.1)   Homo Black   Homo Polled   NXM2523402	12	2.6	70	107	26	6	0.7	17	-0.05	34	0.46	0.18	92

## RED ANGUS SIRE

SIRE	ProS	HB	GM	CE	BW	WW	YW	MK	CM	MB	YG	CW	RE
<b>MANN RED BOX 55C</b> SLGN WIDELOAD 920W x PELTON MISS AJA 0839U   100% AR   RED   PLD   3525359	74	31	43	9	0.9	73	118	36	3	0.28	0.04	26	0.19
<b>J6 MAXED OUT 121G</b> WEBR MAXED OUT 627 x J6 TEMPEST B300   100% AR   RED   PLD   4055258	76	22	53	11	1.4	106	177	25	8	0.19	0.19	68	0.68
<b>RED U2 TOWNSHIP 17G</b> RED MRLA RESOURCE 137E x U2 BEAUTY 113Z   100% AR   RED   PLD   4265551	62	32	30	7	1.9	62	98	20	6	0.27	0.16	24	-0.06
<b>J6 BLAZER 176J</b> J6 MAXED OUT 121G x RED SIXMILE DIAMOND MAY 324C   100% AR   RED   PLD   4467339	29	-14	43	5	2.7	104	175	27	4	0.04	0.15	62	0.54
<b>PIE HASHTAG 1249</b> RED MRLA RESOURCE 137E x BIEBER TILLY 399W   100% AR   RED   PLD   4543557	87	72	15	13	-1.9	60	97	28	9	0.11	0.17	24	0.05
<b>PIE HOLLYWOOD 222</b> BROWN CRSB CONFIDENCE G1410 x PIE 0105   100% AR   RED   PLD   4702973	94	2	91	18	-3	108	178	31	9	0.67	0.06	67	0.67



WULFS JOINT VENTURE G579J



CJSL DATA BANK 6124D ET



PIE HOLLYWOOD 222



J6 BLAZER 176J



---



---



---



---



---



---



---



---

<b>AVERAGES</b>		
LOTS	GROSS	AVERAGE
_____ Limousin & Lim-Flex Bulls _____	_____	_____
_____ Red Angus Bulls _____	_____	_____
_____ TOTAL BULLS _____	_____	_____

---



---



---



---



---

*Thank You*

FOR ATTENDING THE 2025

**74 SCALE BUSTIN' BULL SALE**



# SAVE THE DATE

# 74 Inaugural

# RED

# BLACK

## Production Sale



Females of this Caliber  
will be available.

**SATURDAY, NOVEMBER 22, 2025**

1:00 p.m. MST

At The Ranch • Sterling, CO

**SELLING 60+ LOTS**

Limousin - Lim-Flex - Red Angus  
Bred and Open Heifers

**ONLINE PROVIDER:**



**AUCTIONEER:** Chisum Peterson

**SALE MANAGEMENT:**



Kiley McKinna 402.350.3447

Wiley Fanta 320.287.0751

mcmarketingsales@aol.com

www.mcmmarketingmanagement.com



Tadd, Nan, Tyla & Trotter Thomas

Sterling, CO

Tadd, 970-590-3725

Livestock



2005 Ruhl Drive  
Guthrie, OK 73044



# SCALE BUSTIN' BULL SALE

Volume II

MARCH 19, 2025 • NOON  
Sterling Livestock Commission • Sterling, Colorado



**SELLING 61 BULLS**

36 Limousin & Lim-Flex Bulls  
25 Red Angus Bulls