



Wieczorek Simousin
PRODUCTION SALE

AT THE RANCH • MT VERNON, SD

***NEW TIME* 5:00 PM CST**

02.28.25

Wieczorek Limousin PRODUCTION SALE

02.28.25

***NEW TIME* 5:00 PM CST**

FEBRUARY 28, 2025 • AT THE RANCH • MT VERNON, SD

SALE LOCATION

GPS Location: 39768 267th St. • Mt. Vernon, SD 57363

From the North: From I-90 take exit 319. Head south to 267th street. Turn east 3/4 mile, sale facility on north side of the road.

From the South: From Highway 44, go 9 miles north on 396th Ave to 267th street, then 3/4 mile east, sale facility on north side of the road.

SPECIAL FEATURES

Free wintering until April 1

Sight unseen purchase program - Contact Wieczorek Limousin direct or any member of the sale staff to discuss your needs and every effort will be made to describe the bulls accurately.

If you get the bull and don't like him, you don't own him.

Free delivery to 250 miles (central points beyond)

1/2 down, balance due upon delivery

All bulls unconditionally guaranteed first breeding season

All bulls have been genetically tested & carry GE EPDs and are parent verified

All bulls sell under the terms and conditions of the North American Limousin Foundation and published EPD's are in accordance with the association as of January 29, 2025

View videos of offering and a digital catalog on our website

MARKETING TEAM



KILEY MCKINNA
402-350-3447

WILEY FANTA
320-287-0751

AUCTIONEER Chisum Peterson

SCHEDULE OF EVENTS

1:00 PM.....Viewing of Bulls

4:00 PM.....Complimentary Limousin Beef Dinner

5:00 PM.....Sale Begins

LIVESTOCK REPRESENTATIVES

Scott Dirk, Tri-State Livestock News.....605-380-6024

Scott Manley, Special Guest.....417-860-5250

Kadon Leddy, Cattle Business Weekly.....605-924-0757

SALE DAY PHONES

Curt Wieczorek.....605-999-1298

Kiley McKinna.....402-350-3447

Wiley Fanta.....320-287-0751

ACCOMMODATIONS

Comfort Inn & Suites, Mitchell • 605-990-2400

Just Off I-90 at Exit 332

Hampton Inn, Mitchell • 605-996-1575

Just Off I-90 at Exit 332

Curt & Leanne Wieczorek

HOME.....605-227-4601

CELL.....605-999-1298

39768 267TH ST. • MT. VERNON, SD

ONLINE INTERNET PROVIDER

DVAuction
Broadcasting Real-Time Auctions

WWW.DVAUCTION.COM • YOU MUST REGISTER TO BID ONLINE PRIOR TO THE SALE.

Email: curtwzrk@gmail.com

YOUR CALL OR VISIT IS WELCOME ANYTIME!

FOR MORE INFORMATION REGARDING THE SALE, GIVE US OR ANY MEMBER OF OUR TRUSTED MARKETING TEAM A CALL.

www.wieczoreklimousin.com

WZPK

Welcome Cattlemen

Welcome to the 45th annual Wieczorek Limousin Production Sale. Thank you for your interest in our program and for giving us the opportunity to serve a portion of your seedstock needs. This is something that we consider a privilege and take very seriously.

It's been our long standing goal to make your bull buying experience as stress free as possible. Notice, as you look through the catalog you will see complete performance data, EPDs and percentiles for each lot. Furthermore, we've elected to invest in genomic testing for all our registered sale bulls to further increase the accuracy of the EPD's provided. Note, a more detailed explanation of GE EPD's and the potential realized value they offer can be found on page 13. Additional information that will be available sale day will be adjusted scrotal data.

From a customer service standpoint, all bulls selling are unconditionally guaranteed for the first breeding season. This includes death, injury and dissatisfaction. We will also keep your purchase until April 1 and then arrange delivery up to 250 miles at absolutely no cost to you. If you live beyond 250 miles, we will work with you in locating a satisfactory central point. Wieczorek Limousin will also provide you the option of paying 1/2 down sale day with the balance due at delivery.

Feel free to stop by the ranch any time prior to the sale to view the bulls. If you have questions about the offering or need assistance with travel arrangements, just pick up the phone and give us a call, we would be happy to assist. Again, we look forward to seeing you at the ranch on the 28th.

Sincerely,
The Wieczorek Family

Curt and Leanne

Ryan & Danielle

Bradley, Megan, Josie, Isla & Elyse

Micah & Emily



QUALITY WITHOUT COMPROMISE
WIECZOREK
LIMOUSIN



Wieczorek Limousin



The importance of quality herd bulls, be it in a commercial or seedstock operation, cannot be stressed enough. Herd bull decisions made today influence your program, either positively or negatively, for years to come through daughters retained in the herd. At Wieczorek Limousin we have always believed in having the absolute best bull power available in the industry. As such, we have invested heavily over the years to ensure only the best sires walk behind our progressive AI and embryo program. As you study the bulls offered for sale in this catalog, and as you look over the reference sire listing on the following pages, you will notice the positive influence bulls owned by Wieczorek or bulls carrying the WZRK prefix, are currently having on our program.

By becoming a customer of Wieczorek Limousin, you are not simply buying a new herd bull, you are buying into our philosophy of continuously striving to improve the sire side of the breeding equation.



SPRING YEARLING BULLS

You Buy Em', We Back Em'!

All of our bulls have passed a breeding soundness exam issued by a certified veterinarian. All bulls are guaranteed breeding sound and carry a first breeding season guarantee. The first breeding season will be defined as 90 days after turnout. If your bull does not complete the first breeding season, the following applies:

OPTION A, INSURING BULL/S AT TIME OF PURCHASE

To help protect your investment in our genetics, Wieczorek Limousin will pay half of the cost to insure your purchase. You may select from an injury policy (which covers both accidental injuries and mortality) or a mortality only policy. If available in your state of residence, we would recommend an injury policy which would cover career ending injuries that are non-life threatening and would not be covered under a mortality policy. In the event of a claim, 100% of the insurance proceeds would go to the bull owner.

OPTION B, NO INSURANCE

If you choose not to insure your bull purchase and he sustains a career ending injury during the first breeding season, Wieczorek Limousin will provide 50% of the difference between purchase price and salvage value (min. salvage value of \$1,000). This credit will be applied towards purchase of a bull of equal or greater value if one is available, or will be provided as a sale credit in next year's sale. The buyer is responsible for notifying the seller immediately when injury occurs and is required to have the injured bull diagnosed by a licensed veterinarian. To qualify for this credit, buyer must notify seller and provide veterinarian's diagnosis prior to selling the bull. All claims must be made prior to September 1.



Wieczorek Warranty

Feature Bulls



Feature

COLE
JACKPOT
38J

WZRK **MIKE DROP** 8016M

01/28/2024 • PUREBRED(90/76.6) • HOMO POLLED (P-2) • HOMO BLACK (T) • NPM3135881 • WZRK 8016M • BULL

Act. BW: 94
Adj. WW: 664
Adj. YW: 1394
Adj. REA: 17.8
Adj. FAT: 0.38
Adj. IMF: 2.31
Adj. SC:

CELL ENVISION 7023E
COLE JACKPOT 38J ET
COLE MISS XRATED 354A

HUNT CREDENTIALS 37C ET
WZRK FLIRTATIOUS 8016F
WZRK DAYTIME 6036D

AHCC BARN BURNER B907
PBRs ZSA ZSA 246Z
MRL X-RATED 014X
COLE MISS PRODUCTION 874U
HUNT TESTAMENT 40T
JKTW WHISKEY RIVER 985 W
HUNT ATOMIC 17A
WZRK MISS TUFFENUFF 3018A

GE-EPDs

CED	BW	WW	YW	MK	TM	CEM	SC	DOC	YG	CW	REA	MB	\$G	\$TPI
8	2	74	119	33	70	6	0.65	17	-0.32	42	0.98	0.55	0.16	137.56
70%	70%	25%	15%	4%	4%	50%	45%	5%	90%	10%	65%	1%	3%	2%

Feed Efficiency Data:
ADG 5.35 // Feed/Gain 4.54

What an exceptional way to lead off this impressive offering! WZRK Mike Drop 8016M combines a notable pedigree, a breed-leading EPD profile and an eye-catching phenotype. His sire, COLE Jackpot 38J has proven to transmit progeny that pair big data with stand-out phenotypes in our program. His dam is a beautiful-pattered HUNT Credentials 37C daughter. On paper he has numbers worth studying take note of his breed-leading marbling figure and top 2% rank for \$TPI. Aside from his numerical advantages, phenotypically he is heavily structured, big-bodied, and level-topped, with extra muscle expression and free moving off both ends of his skeleton. What's more, he is homozygous polled and homozygous black. Don't miss out on your chance to own this remarkable individual who will predictably advance your breeding program to new heights.

WZRK

Feature Bulls



2



3

2

WZRK MACGYVER 2028M

01/17/2024 • PUREBRED(93/80.3) • HOMO POLLED (P-2) • RED • NPM3135860 • WZRK 2028M • BULL

Act. BW: 79
Adj. WW: 620
Adj. YW: 1271
Adj. REA: 14.68
Adj. FAT: 0.33
Adj. IMF: 2.625
Adj. SC:

ROMN TUFF ENUFF 103T
WZRK ENUFF TIME 5027E
WZRK MISS ATOMIC 5027C

HUNT CREDENTIALS 37C ET
WZRK 2028K
WZRK 9031G

WULFS RANSOM 3059R
ROMN ROBERTA 35R
HUNT ATOMIC 17A
WZRK MISS XTRACTOR 3010A
HUNT TESTAMENT 40T
JKTW WHISKEY RIVER 985 W
L7 EVERLAST 7007E
WZRK EMMY 7063E

GE-EPDs

WZRK

CED	BW	WW	YW	MK	TM	CEM	SC	DOC	YG	CW	REA	MB	\$G	\$TPI
17	-2.5	68	104	30	64	11	0.79	14	-0.26	13	0.67	0.49	0.1	84.66
3%	4%	40%	40%	15%	15%	2%	30%	40%	95%	85%	>95%	1%	45%	80%

Feed Efficiency Data:
ADG 4.33 // Feed/Gain 5.56

This red homozygous polled herd sire prospect is sure to be a crowd favorite sale day. Visually, he is heavily structured, and level-topped, with extra muscle expression and free moving off both ends of his skeleton. He is sired by WZRK Enuff Time 5027E the ROMN Tuff Enuff 103T son we raised and have had great success from.

His dam is a 2-year-old HUNT Credentials 37C daughter, that has breed-leading marbling. On paper WZRK Macgyver 2028M has impressive stats, ranking in the top 1% for marbling, top 3% for calving-ease and top 4% birthweight. Make no mistake and be sure to have him on the top of your list sale day.

3

WZRK MAIN EVENT 9040M

02/16/2024 • PUREBRED(93/83.3) • HOMO POLLED (P-2) • HOMO BLACK (T) • NPM3135906 • WZRK 9040M • BULL

Act. BW: 95
Adj. WW: 728
Adj. YW: 1409
Adj. REA: 18.58
Adj. FAT: 0.47
Adj. IMF: 1.785
Adj. SC:

CELL ENVISION 7023E
CELL HISTORY BUFF 0245H ET
CELL MISS RESPONDER 6078D

L7 EVERLAST 7007E
WZRK 9040G
WZRK ETTA 7061E

AHCC BARN BURNER B907
PBRS ZSA ZSA 246Z
COLE ABSOLUTE 05A
MAGS YODH
WULFS XCELLSIOR X252X
MISS L7 934W
WZRK BOOT STRAPS 1038B
WZRK MISS UNLIMITED 3011A

GE-EPDs

WZRK

CED	BW	WW	YW	MK	TM	CEM	SC	DOC	YG	CW	REA	MB	\$G	\$TPI
9	3.1	89	142	26	70	5	1.1	16	-0.56	44	1.68	0.13	0.13	135.38
60%	85%	1%	1%	40%	4%	65%	10%	10%	15%	4%	1%	20%	15%	2%

Feed Efficiency Data:
ADG 4.74 // Feed/Gain 4.77

Big-time growth bull here! If you're searching for a herd sire prospect that will add pounds look no further than WZRK Main Event 9040M. He recorded a 728lb 205-day weight that ratio'd a 111. This explosive growth could be predicted due to his performance EPDs, his weaning weight and yearling weight both rank in the top 1% of the breed. Along with a top 1% rank for ribeye area and top 2% rank for \$TPI. His sire, CELL History Buff 0245H was our purchase from the 2021 Linhart Limousin Bull Sale. This son of CELL Envision 7023E was a true standout phenotypically and numerically. His dam is a 5-year-old L7 Everlast 7007E daughter. This combination of presence and numbers projects him to be the type of herd bull that produces well-balanced, polled, stout calves year in and year out.

Feature Bulls



4



5

4

WZRK MUFASA 9038M

02/12/2024 • PERCENTAGE(84/75.2) • HOMO POLLED (P-2) • BLACK • NXM3135898 • WZRK 9038M • BULL

Act. BW: 93
Adj. WW: 715
Adj. YW: 1455
Adj. REA: 16.4
Adj. FAT: 0.41
Adj. IMF: 2.185
Adj. SC:

WULFS GALLAGHER 7056G
WZRK KALUA 0033K
WZRK 0033H

CELL ENVISION 7023E
WZRK 9038G

WZRK MISS ATOMIC 5023C

WULFS XCELLSIOR X252X
WULFS EDWINNA 7056E
HUNT CREDENTIALS 37C ET
WZRK DOWN UNDER 6055D
AHCC BARN BURNER B907
PBRS ZSA ZSA 246Z
HUNT ATOMIC 17A
WZRK MISS RX 3033A

GE-EPDs

WZRK

CED	BW	WW	YW	MK	TM	CEM	SC	DOC	YG	CW	REA	MB	\$G	\$TPI
8	1	78	118	31	70	5	1.25	17	-0.2	32	0.69	0.19	0.13	98.21
85%	60%	10%	15%	4%	3%	75%	15%	3%	45%	65%	60%	65%	20%	55%

Feed Efficiency Data:
ADG 5.77 // Feed/Gain 4.37

This bull is an absolute stand-out in the offering. Heavy muscled, rugged designed, big-bodied, and sound on the move. He is a highly usable and versatile WZRK Kalua 0033K son, the \$12,500 bull that sold to Duplaga Limousin in our 2023 sale. Kalua progeny have tremendous base width, center capacity, and muscle expression. This lot's dam is a maternal patterned CELL Envision daughter. On paper, he ranks in the top 10% for weaning weight, paired with high rankings in numerous other industry-relevant traits. He has everything completely stacked in his favor.

5

WZRK MAGNUM 1006M

02/25/2024 • LIM-FLEX(69/60.5) • HOMO POLLED (T) • HOMO BLACK (T) • LFM3135911 • WZRK 1006M • BULL

Act. BW: 93
Adj. WW: 786
Adj. YW: 1432
Adj. REA: 13.66
Adj. FAT: 0.72
Adj. IMF: 3.19
Adj. SC:

COLE GENESIS 86G
CELL TMCK KICKIN UP DUST 2261K
TMCK GRIZZLY ROSE 700G

AHCC DAKOTA THUNDER 363D
WZRK 1006J

WZRK CANT TOUCH THIS 5070C FT WZRK MISS NOBEL PRIZE6027

HUNT CREDENTIALS 37C ET
COLE MISS XRATED 354A
S A V PRIORITY 7283
AHCC MISS ANCHOR 6066D
AHCC ANGUS VALLEY 911B
AHCC MISS ROBIN A363
WZRK PRIME CUT 8012Y
WZRK MISS NOBEL PRIZE6027

GE-EPDs

WZRK

CED	BW	WW	YW	MK	TM	CEM	SC	DOC	YG	CW	REA	MB	\$G	\$TPI
13	2.9	92	149	33	79	8	0.67	17	-0.04	71	0.7	0.42	0.11	151.21
20%	90%	3%	2%	4%	1%	20%	80%	5%	80%	1%	45%	30%	35%	1%

Feed Efficiency Data:
ADG 4.44 // Feed/Gain 4.87

This herd sire prospect is an absolute eye-catcher. Stout featured, long-bodied, and wide-based. He weaned at 786 lbs. to ratio a 120. He is sired by CELL TMCK Kickin Up Dust 2261K, the COLE Genesis 86G son. His dam is a AHCC Dakota Thunder 363D daughter, a 4-year-old female who has done a great job. On paper WZRK Magnum 1006M will stop you in your tracks. He ranks in the top 1% of the breed for carcass weight and \$TPI, top 2% for yearling weight and top 3% for weaning weight. Also, take note of his 0.42 marbling which ranks in the top 30%. This double homozygous Lim-Flex is going to do big things for the winning bidder. Make that be you.

WZRK

Feature Bulls



6



7

6

WZRK MILKMAN 6042M

01/22/2024 • PUREBRED(100/89) • HOMO POLLED (P-2) • RED • NPM3135871 • WZRK 6042M • BULL

Act. BW: 97
Adj. WW: 686
Adj. YW: 1357
Adj. REA: 17.08
Adj. FAT: 0.34
Adj. IMF: 2.55
Adj. SC:

HUNT CREDENTIALS 37C ET
WZRK GAME CHANGER 4015G
WZRK MISS TUFFENUFF 4015B

WULFS APOSTLE T343A
WZRK DREAM CATCHER 6042D
WZRK MISS NASCAR 5050R

HUNT TESTAMENT 40T
JKTW WHISKEY RIVER 985 W
ROMN TUFF ENUFF 103T
WZRK MISS MTO 0010X
WULFS YANKEE K689Y
WULFS ULTRA DIAMOND 8571U
WULFS NASCAR G949N
WZRK MISS H FIELD 1055L

GE-EPDs

WZRK

CED	BW	WW	YW	MK	TM	CEM	SC	DOC	YG	CW	REA	MB	SG	STPI
6	0.9	64	98	37	68	3	1.45	16	-0.39	50	1.12	0.26	0.11	149.83
90%	45%	55%	50%	1%	10%	90%	3%	10%	70%	2%	40%	10%	35%	1%

Feed Efficiency Data:
ADG 4.89 // Feed/Gain 5.64

Check out this surefire crowd favorite sale day! Visually the terms, big-footed, deep-bodied, thick, and rugged describe this lunker. He is sired by WZRK Game Changer 4015G son, the top-selling bull in our 2020 sale selling to Coleman Limousin. On paper this purebred herd bull prospect ranks in the top 1% for \$TPI, top 2% for carcass weight and top 3% for scrotal. There's little doubt he'll sire calves with great carcass merit that'll suit the mainstream marketplace. The bottom line is, if you have a set of cattle that you want to add value to - we think he'll do it.

7

WZRK MOVE IT MOVE IT 9201M

01/20/2024 • PERCENTAGE(81/71.3) • HOMO POLLED (P-2) • HOMO BLACK (T) • NXM3135867 • WZRK 9201M • BULL

Act. BW: 89
Adj. WW: 605
Adj. YW: 1335
Adj. REA: 16.94
Adj. FAT: 0.4
Adj. IMF: 2.58
Adj. SC:

CELL ENVISION 7023E
CELL HISTORY BUFF 0245H ET
CELL MISS RESPONDER 6078D

DANH DURHAM 54D
WZRK 9201 ET
WZRK MISS NASCAR 8012U

AHCC BARN BURNER B907
PBRS ZSA ZSA 246Z
COLE ABSOLUTE 05A
MAGS YODH
HUNT BILLY RAY 80B
DANH ALTO 35A
WULFS NASCAR G949N
WZRK MISS F LINER 1021L

GE-EPDs

WZRK

CED	BW	WW	YW	MK	TM	CEM	SC	DOC	YG	CW	REA	MB	SG	STPI
9	0.4	69	120	23	58	6	1.3	16	-0.39	39	1.28	0.19	0.17	122.06
70%	50%	30%	15%	55%	35%	60%	10%	5%	15%	45%	4%	65%	3%	15%

Feed Efficiency Data:
ADG 4.96 // Feed/Gain 4.85

Here's one that comes to us in an extra heavy muscled package and carries that traditional Limousin look that made the breed popular. Visually, this son of the high profile A.I. sire CELL History Buff 0245H is thick-ended, wide-topped, and structurally correct. CELL History Buff 0245H was our purchase from the 2021 Linhart Limousin Bull Sale. This son of CELL Envision 7023E was a true standout phenotypically and numerically. Note, he posted north of 1300+ pounds of adjusted yearling weight. Make no mistake and be sure to have this outstanding individual on your short list on February 28!

Feature Bulls



8



9

8

WZRK MUDEFLAP 2040M

01/19/2024 • PUREBRED(89/76.2) • HOMO POLLED (T) • BLACK • NPM3135863 • WZRK 2040M • BULL

Act. BW: 65
Adj. WW: 640
Adj. YW: 1375
Adj. REA: 19.42
Adj. FAT: 0.31
Adj. IMF: 2.465
Adj. SC:

ROMN TUFF ENUFF 103T
WZRK ENUFF TIME 5027E
WZRK MISS ATOMIC 5027C

WULFS GALLAGHER 7056G
WZRK 2044K
WZRK 0013H

WULFS RANSOM 3059R
ROMN ROBERTA 35R
HUNT ATOMIC 17A
WZRK MISS XTRACTOR 3010A
WULFS XCELLSIOR X252X
WULFS EDWINNA 7056E
CJSL DATA BANK 6124D ET
WZRK MISS ATOMIC 5022C

GE-EPDs

WZRK

CED	BW	WW	YW	MK	TM	CEM	SC	DOC	YG	CW	REA	MB	\$G	\$TPI
20	-3.2	64	98	28	60	12	0.54	15	-0.41	30	1.03	0.29	0.15	129.64
1%	2%	55%	50%	25%	40%	1%	55%	20%	65%	35%	55%	4%	4%	4%

Feed Efficiency Data:
ADG 5.64 // Feed/Gain 3.98

Heifer safe! Coming to you in a homozygous polled package is this fresh pedigreed, black purebred son of WZRK Enuff Time 5027E. Visually, he is super long-sided, massive through his rib cage, wide and muscular through his quarter. Numerically, this guy tops the charts, ranking in the top 1% of the breed for calving-ease, top 2% for birth weight and top 4% for both \$TPI and marbling. Bottom-line is, if you're looking for that bull that combines phenotype, calving ease, and numeric royalty in one package, there's little need to look further than WZRK Mudflap 2040M.

9

WZRK MOJO 4032M

01/17/2024 • PERCENTAGE(79/72) • HET POLLED (T) • HOMO BLACK (T) • NXM3135861 • WZRK 4032M • BULL

Act. BW: 91
Adj. WW: 650
Adj. YW: 1321
Adj. REA: 14.98
Adj. FAT: 0.45
Adj. IMF: 2.815
Adj. SC:

MAGS ANCHOR
CJSL DATA BANK 6124D ET
AUTO CARMINDA 6565

AHCC RED XPLOSION X615
WZRK BON BON 4032B
WZRK MISS WARDEN 7024T

LH WAR HERO 195W
MGS XIPHOPAGOUS
JCL LODESTAR 27L
AUTO CARMINDA 872P
MAGS UNHEARD OF
HC VELVET 615
DVFC WARDEN 233K
WZRK MISS TUBB 1019L

GE-EPDs

WZRK

CED	BW	WW	YW	MK	TM	CEM	SC	DOC	YG	CW	REA	MB	\$G	\$TPI
10	2.1	78	117	16	55	6	0.65	19	-0.19	43	0.66	0.16	0.08	110.71
60%	80%	10%	15%	>95%	50%	60%	65%	1%	45%	35%	60%	70%	75%	30%

Feed Efficiency Data:
ADG 5.09 // Feed/Gain 4.61

Study this homozygous polled, huge growth herd bull prospect that has the stoutness every cattleman demands. He is sired by CJSL Data Bank 6124D, the popular MAGS Anchor son. On paper, WZRK Mojo 4032M presents tremendous weaning weight and yearling weight and ranks high for multiple maternal traits. Don't miss this rugged designed, muscular, good-footed herd sire prospect sale day.

WZRK

Feature Bulls



10



11

10

WZRK MADE FOR SUCCESS 6004M

03/10/2024 • PUREBRED(100/88.9) • HOMO POLLED (P-1) • RED • NPM3136174 • WZRK 6004M • BULL

Act. BW: 101
Adj. WW: 694
Adj. YW: 1355
Adj. REA: 16.74
Adj. FAT: 0.43
Adj. IMF: 2.71
Adj. SC:

WZRK GAME CHANGER 4015G
WZRK KOMBUCHA 7041K
WZRK ELLEN 7041E

ROMN TUFF ENUFF 103T
WZRK DELICATE 6004D

WZRK BLACK BEAUTY 4030B

HUNT CREDENTIALS 37C ET
WZRK MISS TUFFENUFF 4015B
WULFS APOSTLE T343A
WZRK MISS GENERAL 0074X
WULFS RANSOM 3059R
ROMN ROBERTA 35R
CJSL WILD WEST 9060W
WZRK MISS GENERAL 0078X

GE-EPDs

WZRK

CED	BW	WW	YW	MK	TM	CEM	SC	DOC	YG	CW	REA	MB	\$G	\$TPI
9	2.7	72	109	30	66	5	1.2	12	-0.45	28	1.01	0.25	0.09	107.92
60%	80%	30%	30%	15%	10%	65%	10%	70%	50%	45%	60%	10%	60%	35%

Feed Efficiency Data:
ADG 4.18 // Feed/Gain 4.82

If you like Purebred, red, homozygous polled, bulls that are heavily muscled, high growth, and loaded with rib-eye area study this son of WZRK Kombucha 7041K and consider your search over! To take it one step further, on paper notice he ranks in the top 10% for marbling and top 30% for both weaning weight and yearling weight. We think a lot of this performance-oriented, stout-featured, attractive patterned bull and encourage you to study him sale day.

11

WZRK MAVERICK 1060M

02/03/2024 • PERCENTAGE(79/69.1) • HOMO POLLED (P-2) • HOMO BLACK (P-2) • NXM3136170 • WZRK 1060M • BULL

Act. BW: 82
Adj. WW: 691
Adj. YW: 1362
Adj. REA: 15.92
Adj. FAT: 0.44
Adj. IMF: 2.51
Adj. SC:

CELL ENVISION 7023E
WZRK KRYPTONITE 5022K
WZRK MISS ATOMIC 5022C

TMCK CASH FLOW 247C
WZRK 1060J

WZRK MISS WIDELOAD 1040Y

AHCC BARN BURNER B907
PBRS ZSA ZSA 246Z
HUNT ATOMIC 17A
WZRK MISS WIDELOAD 3040A
MAGS ALI
TMCK NINA 17X
BAR JZ WIDELOAD 269W
WZRK MISS KUDOS 3044N

GE-EPDs

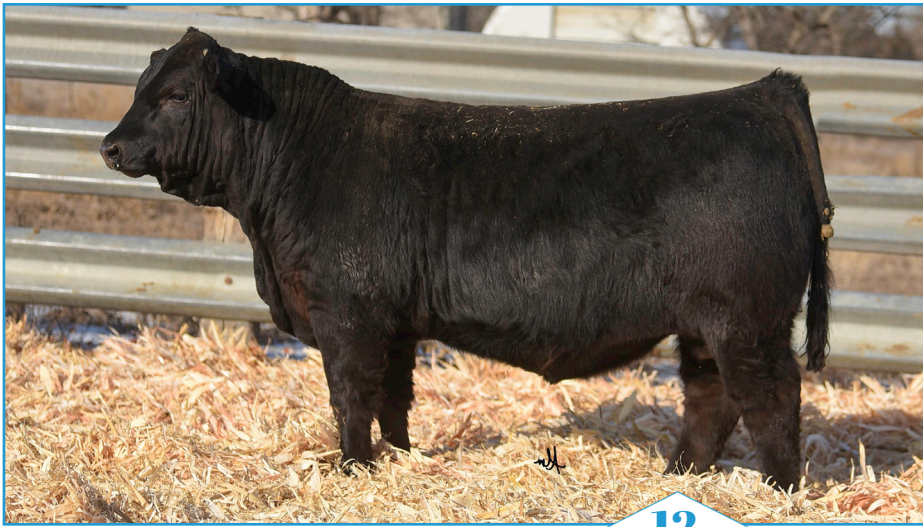
WZRK

CED	BW	WW	YW	MK	TM	CEM	SC	DOC	YG	CW	REA	MB	\$G	\$TPI
10	-0.8	74	109	26	63	6	1.3	13	-0.2	41	0.77	0.27	0.06	111.88
60%	30%	15%	25%	20%	15%	60%	10%	30%	45%	40%	50%	55%	90%	25%

Feed Efficiency Data:
ADG 4.89 // Feed/Gain 4.44

Here is an attractive made herd sire prospect that combines rib and muscle to the highest degree. To the eye, WZRK Maverick 1060M is long-backed, big-bodied, muscular, and easy fleshing. On paper, he is highlighted by 691 lbs. of adjusted weaning that ratioed a 105. This growth could be predicted by a weaning weight figure of 74 which ranks in the top 15% of the entire breed. We think WZRK Maverick does a lot right.

Feature Bulls



12



13

12

WZRK MASTERPIECE 0011M

03/12/2024 • PERCENTAGE(81/72.2) • HET POLLED (T) • BLACK • NXM3135935 • WZRK 0011M • BULL

Act. BW: 77
Adj. WW: 661
Adj. YW: 1292
Adj. REA: 15.28
Adj. FAT: 0.56
Adj. IMF: 3.05
Adj. SC:

TNGC EMPIRE 736E
WZRK JAMOCHA 1044J
WZRK MISS PRIMESTAR 1044Y

TMCK CASH FLOW 247C
MAGS BETH ET
WZRK PRIMESTAR 861P
WZRK MISS HOLYFIELD 1034L
WULFS RANSOM 3059R
ROMN ROBERTA 35R
AHCC COWBOY KIND C595 ET
WZRK MISS NASCAR 9043W

ROMN TUFF ENUFF 103T
WZRK 0011H
WZRK FRANCINE 8063F

GE-EPDs

WZRK

CED	BW	WW	YW	MK	TM	CEM	SC	DOC	YG	CW	REA	MB	SG	STPI
17	-4.9	56	86	24	52	10	0.65	11	-0.21	24	0.68	0.36	0.13	106.88
2%	2%	70%	65%	45%	65%	5%	65%	55%	40%	85%	60%	40%	20%	35%

Feed Efficiency Data:
ADG 4.52 // Feed/Gain 4.98

Here's one that promises to catch your attention on sale day! WZRK Masterpiece 0011M is a fresh pedigreed, level-made, sound-structured herd sire prospect that offers impressive calving ease numerics that rank in the top 2% of the breed. The combination of his phenotype and numbers projects him to be the type of herd bull that produces well-balanced, easy coming calves year in and year out.

13

WZRK MVP 0001M

03/14/2024 • LIM-FLEX(62/57) • HOMO POLLED (P-3) • HOMO BLACK (T) • LFM3135937 • WZRK 0001M • BULL

Act. BW: 87
Adj. WW: 762
Adj. YW: 1358
Adj. REA: 17.92
Adj. FAT: 0.3
Adj. IMF: 2.17
Adj. SC:

TNGC EMPIRE 736E
WZRK JAMOCHA 1044J
WZRK MISS PRIMESTAR 1044Y

MUSGRAVE HEADWAY
WZRK 0001H
WZRK FRANCIS 8062F

TMCK CASH FLOW 247C
MAGS BETH ET
WZRK PRIMESTAR 861P
WZRK MISS HOLYFIELD 1034L
SCHIEFFELBEIN ALLIED 514
MUSGRAVE LADY BARBARA 524-57
COLE BUSINESSMAN 104B
WZRK MISS RAWHIDE 8050U

GE-EPDs

WZRK

CED	BW	WW	YW	MK	TM	CEM	SC	DOC	YG	CW	REA	MB	SG	STPI
15	-1.8	62	98	28	59	9	0.65	15	-0.17	34	0.52	0.37	0.13	113.57
5%	10%	80%	80%	25%	55%	10%	80%	20%	40%	55%	70%	35%	20%	25%

Feed Efficiency Data:
ADG 4.61 // Feed/Gain 3.94

WZRK MVP 0001M is a heifer safe, double homozygous son of WZRK Jamocha and out of a 5-year-old Musgrave Headway daughter. This bull is thick and bred for consistency. He posts a top 5% ranking for calving ease and top 10% for birth weight. This level-topped, square hipped, sound structured bull will have the ability to transmit real-world performance with moderate birth and keep eye appeal in a calf crop.

WZRK

OUR PROGRAM

Financing Program - 50% down at the time of purchase, balance due on delivery

All bulls are 100% unconditionally guaranteed

Sight unseen purchase program

Free wintering until April 1, 2025

Free delivery to central points

All bulls will be ultrasounded and carry GE-EPDs by sale day

Sight unseen purchase program - Contact Wieczorek Limousin direct or any member of the sale staff to discuss your needs and every effort will be made to describe the bulls accurately. If you get the bull and don't like him, you don't own him.



Improving Selection through NALF Genomic-Enhanced EPDs (GE-EPDs)

Limousin breeders and their commercial customers benefit greatly from new breeding and selection tools. The North American Limousin Foundation (NALF) launched genomic-enhanced EPDs (GE-EPDs) with the fall 2015 international cattle evaluation. This provides GE-EPDs for all Limousin and Lim-Flex animals that have completed DNA testing for genomic profiles.

The information from the genomic data can be as informative as a bull's first calf crop or a cow's lifetime production record. Since genomic data is incorporated directly into the EPDs, cattle producers will not have to learn how to interpret new data.

For more information, visit www.NALF.org or call 303-220-1693.

Major Benefits of GE EPDs

- Risk Reduction through improved accuracies
- Value of time to assess breeding stock at a younger age
- Increased rate of genetic progress
- Getting data on economically important traits, which are expensive or difficult to measure
- Combination of pedigree information, individual performance data, and genomics into one easy to understand number



Wieczorek Program

Feature Bulls



14



15

14

WZRK **MARKSMAN** 8051M

01/16/2024 • PUREBRED(100/89.2) • HET POLLED (T) • RED • NPM3135858 • WZRK 8051M • BULL

Act. BW: 86
Adj. WW: 632
Adj. YW: 1243
Adj. REA: 19.56
Adj. FAT: 0.33
Adj. IMF: 2.14
Adj. SC:

WULFS HORTON 7358H
WULFS KACTUS 4841K
WULFS BESAME MUCHO 4841B

WULFS APOSTLE T343A
WZRK FOXY 8051F

WZRK MISS TUFF ENUFF 2064

HUNT CREDENTIALS 37C ET
WULFS ENCARNASION 7358E
WULFS XTRACTOR X233X
WULFS YET IT'S TRUE 1401Y
WULFS YANKEE K689Y
WULFS ULTRA DIAMOND 8571U
ROMN TUFF ENUFF 103T
WZRK MISS GUARDIAN 9041J

GE-EPDs

CE	BW	WW	YW	MK	TM	CEM	SC	DOC	YG	CW	REA	MB	SG	STPI
4	0.9	77	115	31	70	2	1	14	-0.53	32	1.5	0.05	0.1	110.35
>95%	45%	15%	20%	10%	4%	95%	10%	40%	20%	30%	2%	35%	45%	30%

Feed Efficiency Data:
ADG 4.59 // Feed/Gain 5.83

Purebred alert! Well-balanced, is the term that best describes this fresh pedigreed son of Wulfs Kactus 4841K out of a go-to type cow sired by Wulfs Apostle T343A. Phenotypically, he is flat-shouldered, level down his top, thick-ended, and long-sided. On paper, he holds staggering growth and maternal advantages. We think this polled, red-hided herd bull prospect does a lot right and is one to seek out on sale day.

15

WZRK **MOUNTAIN MAN** 2039M

01/14/2024 • LIM-FLEX(75/66.2) • HET POLLED (T) • BLACK • LFM3135851 • WZRK 2039M • BULL

Act. BW: 72
Adj. WW: 643
Adj. YW: 1289
Adj. REA: 15.12
Adj. FAT: 0.28
Adj. IMF: 2.38
Adj. SC:

WULFS XCELLSIOR X252X
WULFS GALLAGHER 7056G
WULFS EDWINNA 7056E

AHCC DAKOTA THUNDER 363D
WZRK 2039K

WZRK MISS XTRACTOR 5017C

WULFS SIRLOIN 3172S
WULFS MISSIVE 2258M
BIEBER DEEP END B597
WULFS CALIBRI 5210C ET
AHCC ANGUS VALLEY 911B
AHCC MISS ROBIN A363
WULFS XTRACTOR X233X
WZRK MS RANGE RIDER 2019Z

GE-EPDs

CE	BW	WW	YW	MK	TM	CEM	SC	DOC	YG	CW	REA	MB	SG	STPI
17	-1.3	79	115	31	71	8	0.6	14	-0.21	44	0.7	0.14	0.12	127.04
1%	10%	20%	40%	10%	10%	20%	80%	35%	30%	25%	45%	80%	30%	10%

Feed Efficiency Data:
ADG 5 // Feed/Gain 4.30

Calling all cattlemen - if moderate birth, heavy weight calves are what trips your trigger take a look at this big-middled, rugged designed, lunker sale day. EPD-wise, he's an absolute curve bender! Note, that he posts a user-friendly calving ease EPD of 17 which ranks in the top 1% of the breed along with a staggering weaning figure that ranks in the top 20%. There's little question that next fall his calves will be in high demand.

Feature Bulls



16



17

16

WZRK MIND BLOWN 1019M

02/14/2024 • PERCENTAGE(83/74.6) • HET POLLED (T) • HET BLACK (T) • NXM3135904 • WZRK 1019M • BULL

Act. BW: 95
Adj. WW: 694
Adj. YW: 1246
Adj. REA: 15.44
Adj. FAT: 0.48
Adj. IMF: 2.515
Adj. SC:

HUNT CREDENTIALS 37C ET
COLE GENESIS 86G
COLE MISS XRATED 354A

CJSL DATA BANK 6124D ET
WZRK 1019J

WZRK MS RX 2015Z

HUNT TESTAMENT 40T
JKTW WHISKEY RIVER 985 W
MRL X-RATED 014X
COLE MISS PRODUCTION 874U
MAGS ANCHOR
AUTO CARMINDA 656S
AHCC RED XPLOSION X615
WZRK MISS RAWHIDE 4107P

GE-EPDs

WZRK

CED	BW	WW	YW	MK	TM	CEM	SC	DOC	YG	CW	REA	MB	SG	STPI
10	1.7	81	126	27	68	6	0.55	9	-0.1	44	0.68	0.46	0.08	117
60%	75%	10%	10%	15%	5%	60%	75%	95%	65%	30%	60%	30%	75%	20%

Feed Efficiency Data:
ADG 4.32 // Feed/Gain 4.67

Take note of this well-balanced individual that comes to you in a heavily muscled, black-hided package. He is a highly usable and versatile COLE Genesis son, the HUNT Credentials son that was the \$40,000 top seller in the 2020 Coleman Limousin Bull Sale. His dam is sired by CJSL Data Bank 6124D. WZRK Mind Blown 1019M is well-balanced numerically, highlighted by top 10% rankings for both weaning weight and yearling weight. The earning potential is all here, and we're excited to offer a bull of this nature and proven lineage.

17

WZRK MAN IN BLACK 4030M

03/18/2024 • PUREBRED(93/83.8) • HOMO POLLED (T) • HET BLACK (T) • NPM3135938 • WZRK 4030M • BULL

Act. BW: 99
Adj. WW: 682
Adj. YW: 1348
Adj. REA: 16
Adj. FAT: 0.3
Adj. IMF: 2
Adj. SC:

CELL ENVISION 7023E
CELL HISTORY BUFF 0245H ET
CELL MISS RESPONDER 6078D

CJSL WILD WEST 9060W
WZRK BLACK BEAUTY 4030B

WZRK MISS GENERAL 0078X

AHCC BARN BURNER B907
PBRS ZSA ZSA 246Z
COLE ABSOLUTE OSA
MAGS YODH
DHVO DEUCE 132R
JCL PEPPERMINT
MAGS THE GENERAL
WZRK MISS F. COOKIE9008J

GE-EPDs

WZRK

CED	BW	WW	YW	MK	TM	CEM	SC	DOC	YG	CW	REA	MB	SG	STPI
6	2.2	76	123	25	63	4	1.4	9	-0.48	27	1.3	-0.02	0.1	88.64
90%	70%	20%	10%	50%	20%	80%	3%	85%	35%	45%	10%	60%	45%	75%

Feed Efficiency Data:
ADG 5.01 // Feed/Gain 4.65

This bull is an absolute stand-out in the offering. Heavily muscled, rugged designed, big-bodied, and sound on the move. He is sired by the popular CELL History Buff 0245H, a black CELL Envision son that was on everybody's radar when he sold and has done wonders for the breed while in production. On paper, WZRK Man In Black ranks in the top 3% for scrotal and top 10% for ribeye area paired with high rankings in numerous industry-relevant traits. He has everything completely stacked in his favor.

WZRK

18

WZRK MONEY MAKER 7019M

01/23/2024 • PUREBRED(89/79.5) • HOMO POLLED (P-1) • BLACK • NPM3135872 • WZRK 7019M • BULL

Act. BW: 103
Adj. WW: 615
Adj. YW: 1375
Adj. REA: 15.5
Adj. FAT: 0.28
Adj. IMF: 1.955
Adj. SC:

WULFS FIFTY T804F
WULFS JOINT VENTURE G579J
DHIL TMG 5795C ET

LFLC BANK ACCOUNT 701B
TECS DANTEAN 1629D
MAGS AVIATOR
PBR5 TOUCH ME GENTLY 798T
WZRK PRIMESTAR 861P
WULFS MISSIVE 2258M
AHCC RED XPLOSION X615
WZRK MISS KABOOM 4011P

WULFS XCLUSIVE 2458X
WZRK EVANNA 7019E

WZRK MS TUFF ENUF 2001Z

GE-EPDs

CED	BW	WW	YW	MK	TM	CEM	SC	DOC	YG	CW	REA	MB	\$G	\$TPI
7	2.7	64	105	27	59	3	0.4	16	-0.33	18	0.69	0.01	0.13	71.39
80%	80%	55%	40%	30%	45%	90%	70%	10%	85%	75%	95%	50%	15%	95%

Feed Efficiency Data:
ADG 4.83 // Feed/Gain 5.16

19

WZRK MEDICINE MAN 2004M

01/15/2024 • LIM-FLEX(75/63) • HOMO POLLED (P-2) • RED • LFM3135855 • WZRK 2004M • BULL

Act. BW: 86
Adj. WW: 581
Adj. YW: 1232
Adj. REA: 16.54
Adj. FAT: 0.35
Adj. IMF: 2.235
Adj. SC:

ROMN TUFF ENUFF 103T
WZRK ENUFF TIME 5027E
WZRK MISS ATOMIC 5027C

WULFS RANSOM 3059R
ROMN ROBERTA 35R
HUNT ATOMIC 17A
WZRK MISS XTRACTOR 3010A
LSF TAKEOVER 9943W
BROWN MS P707 Y6674
WULFS NASCAR G949N
WZRK MISS F LINER 1021L

H2R PROFITBUILDER B403
WZRK 2004K ET
WZRK MISS NASCAR 8012U

GE-EPDs

CED	BW	WW	YW	MK	TM	CEM	SC	DOC	YG	CW	REA	MB	\$G	\$TPI
15	0.4	76	121	23	61	10	1.07	14	-0.37	27	0.87	0.14	0.1	94.92
5%	35%	30%	30%	70%	45%	5%	35%	35%	5%	80%	20%	80%	50%	60%

Feed Efficiency Data:
ADG 5.05 // Feed/Gain 4.29

20

WZRK MONTEGO BAY 8059M

01/15/2024 • LIM-FLEX(75/67.7) • HOMO POLLED (T) • HET BLACK (T) • LFM3135856 • WZRK 8059M • BULL

Act. BW: 105
Adj. WW: 612
Adj. YW: 1323
Adj. REA: 14.54
Adj. FAT: 0.44
Adj. IMF: 2.505
Adj. SC:

TMCK CASH FLOW 247C
TNGC EMPIRE 736E
MAGS BETH ET

MAGS ALI
TMCK NINA 17X
MAGS ZODIAC
MAGS THEATRICAL
WULFS YANKEE K689Y
WULFS ULTRA DIAMOND 8571U
WULFS RANGE RIDER 2056R
WZRK MISS GENESIS 5028R

WULFS APOSTLE T343A
WZRK FRIEDA 8059F
WZRK MISS R RIDER 9020W

GE-EPDs

CED	BW	WW	YW	MK	TM	CEM	SC	DOC	YG	CW	REA	MB	\$G	\$TPI
4	3.3	74	122	22	60	1	1.07	19	-0.23	40	0.75	0.06	0.08	91.97
>95%	95%	35%	30%	80%	50%	>95%	35%	1%	25%	35%	35%	95%	70%	70%

Feed Efficiency Data:
ADG 4.66 // Feed/Gain 4.89

21

WZRK MADAGASCAR 0002M

02/08/2024 • LIM-FLEX(68/60.7) • HOMO POLLED (P-3) • HOMO BLACK (T) • LFM3135887 • WZRK 0002M • BULL

Act. BW: 91
Adj. WW: 649
Adj. YW: 1255
Adj. REA: 15.72
Adj. FAT: 0.3
Adj. IMF: 2.605
Adj. SC:

CELL ENVISION 7023E
CELL HISTORY BUFF 0245H ET
CELL MISS RESPONDER 6078D

AHCC BARN BURNER B907
PBR5 ZSA ZSA 246Z
COLE ABSOLUTE 05A
MAGS YODH
SCHIEFFELBEIN ALLIED 514
MUSGRAVE LADY BARBARA 524-57
WULFS XCELLSIOR X252X
WZRK MISS NASCAR 8012U

MUSGRAVE HEADWAY
WZRK 0002H
WZRK FRISKY 8033F ET

GE-EPDs

CED	BW	WW	YW	MK	TM	CEM	SC	DOC	YG	CW	REA	MB	\$G	\$TPI
12	1.2	77	129	26	64	7	1.51	14	-0.27	37	0.94	0.31	0.14	112.57
30%	55%	25%	15%	40%	30%	35%	5%	35%	20%	45%	15%	50%	15%	25%

Feed Efficiency Data:
ADG 4.43 // Feed/Gain 5.03

22

WZRK MAXIMUS 1051M

02/12/2024 • PUREBRED(87/78.2) • HOMO POLLED (P-1) • BLACK • NPM3136171 • WZRK 1051M • BULL

Act. BW: 105
Adj. WW: 694
Adj. YW: 1390
Adj. REA: 16.3
Adj. FAT: 0.36
Adj. IMF: 2.125
Adj. SC:

WZRK GAME CHANGER 4015G
WZRK KOMBUCHA 7041K
WZRK ELLEN 7041E

HUNT CREDENTIALS 37C ET
WZRK MISS TUFFENUFF 4015B
WULFS APOSTLE T343A
WZRK MISS GENERAL 0074X
TMCK CASH FLOW 247C
MAGS BETH ET
WULFS XTRACTOR X233X
WZRK MS RANGE RIDER 2019Z

TNGC EMPIRE 736E
WZRK 1051J
WZRK MISS XTRACTOR 5017C

GE-EPDs

CED	BW	WW	YW	MK	TM	CEM	SC	DOC	YG	CW	REA	MB	\$G	\$TPI
2	3	74	117	27	64	0	1.55	20	-0.35	46	1.09	0.25	0.13	130.1
>95%	85%	25%	20%	30%	15%	>95%	2%	1%	80%	3%	45%	10%	15%	4%

Feed Efficiency Data:
ADG 5.29 // Feed/Gain 4.47

23

WZRK MEATGRINDER 4006M

02/19/2024 • PUREBRED(100/89.1) • HET POLLED (T) • RED • NPM3136173 • WZRK 4006M • BULL

Act. BW: 101
Adj. WW: 593
Adj. YW: 1299
Adj. REA: 15.74
Adj. FAT: 0.39
Adj. IMF: 2.14
Adj. SC:

WZRK GAME CHANGER 4015G
WZRK KOMBUCHA 7041K
WZRK ELLEN 7041E

HUNT CREDENTIALS 37C ET
WZRK MISS TUFFENUFF 4015B
WULFS APOSTLE T343A
WZRK MISS GENERAL 0074X
WZRK PRIMESTAR 861P
WZRK MISS NASCAR 8012U
WULFS NOBEL PRIZE 3861N
WZRK MISS KABOOM 3031N

WZRK PRIME CUT 8012Y
WZRK BROKEN HEARTED 4006B
WZRK MISS NOBEL PRIZE6027

GE-EPDs

CED	BW	WW	YW	MK	TM	CEM	SC	DOC	YG	CW	REA	MB	\$G	\$TPI
4	1.4	57	93	28	57	1	0.95	17	-0.54	34	1.37	0.03	0.11	118.15
>95%	55%	80%	60%	25%	55%	>95%	15%	5%	20%	25%	5%	40%	35%	20%

Feed Efficiency Data:
ADG 5.31 // Feed/Gain 4.89

A Better Understanding of Birth Weight To Performance Relationship

University studies in Wyoming and data from Montana and Colorado lend credence to the following conclusions:

1. The birth weight itself influences calving ease by 65%.
2. The female has 60-70% influence on birth weight of her calf.
3. The bull has 30-40% influence on birth weight of his progeny.
4. Pelvic measurement and angle, as well as the shape of the calf have 35-40% influence on calving ease.
5. Length of gestation greatly affects birth weight. A fetus can gain over one pound per day in the last days of gestation.
6. Weather and temperature the last 30 days affect the length of gestation.
7. Size and maturity of the cow influence calving ease.

If you are not physically recording birth weights, guessing is as accurate as driving with a broken speedometer—what's thought to be 55 MPH may in fact be 65 of 70 MPH, and what's thought to be 70-80 lbs may actually be 80-90 lbs. Remember, everything is relative. Increased growth, frame and performance will increase BW. A longer bodied calf will weigh more. If a calf is expected to have genetics for growth, it will display this prior to birth as well as after. As a rule of thumb, it takes a calf weighing 86 lbs at birth to finish at 1200-1250 lbs. A cow should easily give birth to a calf weighing 8% of her own body weight. Thus a 1200 lbs cow should give birth to a 96 lbs calf with ease. Continued selection for low birth weight will ultimately reduce the mature sizes and performance of your cattle.

24 WZRK **MASTERCRAFT** 7009M

02/11/2024 • PUREBRED(93/83.6) • HOMO POLLED (P-2) • HET BLACK (T) • NPM3135893 • WZRK 7009M • BULL

Act. BW: 85
Adj. WW: 641
Adj. YW: 1297
Adj. REA: 17.68
Adj. FAT: 0.54
Adj. IMF: 2.49
Adj. SC:

HUNT CREDENTIALS 37C ET
COLE GENESIS 86G
COLE MISS XRATED 354A

HUNT TESTAMENT 40T
JKTW WHISKEY RIVER 985 W
MRL X-RATED 014X
COLE MISS PRODUCTION 874U
DLVL XEROX 023X
MISS SYES FRIENDLY 465Z
ROMN TUFF ENUFF 103T
WZRK MISS STETSON 3015A

SYES BACKSTAGE 466B
WZRK EVE 7009E
WZRK CATALINA 5005C

GE-EPDs

CED	BW	WW	YW	MK	TM	CEM	SC	DOC	YG	CW	REA	MB	\$G	\$TPI
14	-0.4	72	117	33	68	9	0.45	10	-0.31	38	0.92	0.22	0.14	121.3
15%	25%	30%	20%	4%	10%	10%	70%	80%	90%	15%	75%	10%	10%	15%

Feed Efficiency Data:
ADG 4.63 // Feed/Gain 4.37

25 WZRK **MADE IN AMERICA** 2011M

01/27/2024 • PERCENTAGE(81/71.2) • HET POLLED (T) • RED • NXM3135879 • WZRK 2011M • BULL

Act. BW: 88
Adj. WW: 577
Adj. YW: 1153
Adj. REA: 13.78
Adj. FAT: 0.36
Adj. IMF: 2.365
Adj. SC:

WULFS GALLAGHER 7056G
WZRK KALUA 0033K
WZRK 0033H

WULFS GALLAGHER 7056G
WZRK 2011K
WZRK 9214 ET

WULFS XCELLSIOR X252X
WULFS EDWINNA 7056E
HUNT CREDENTIALS 37C ET
WZRK DOWN UNDER 6055D
WULFS XCELLSIOR X252X
WULFS EDWINNA 7056E
CJSL DATA BANK 6124D ET
WZRK DAYTIME 6036D

GE-EPDs

CED	BW	WW	YW	MK	TM	CEM	SC	DOC	YG	CW	REA	MB	\$G	\$TPI
15	-1	64	90	30	61	8	0.65	18	-0.06	26	0.28	0.52	0.1	103.77
10%	25%	45%	60%	10%	20%	25%	65%	1%	75%	80%	95%	20%	45%	40%

Feed Efficiency Data:
ADG 4.49 // Feed/Gain 4.8

26 WZRK **MAKE IT RAIN** 2012M

01/22/2024 • PERCENTAGE(85/77) • HOMO POLLED (P-1) • RED • NXM3135869 • WZRK 2012M • BULL

Act. BW: 72
Adj. WW: 630
Adj. YW: 1271
Adj. REA: 15.48
Adj. FAT: 0.47
Adj. IMF: 2.49
Adj. SC:

WULFS GALLAGHER 7056G
WZRK JACK BLACK 9048J
WZRK 9048G

WULFS XCELLSIOR X252X
WULFS EDWINNA 7056E
CJSL DATA BANK 6124D ET
WZRK MISS XTRACTOR 5044C
HUNT CREDENTIALS 37C ET
WZRK MISS TUFFENUFF 3018A
AHCC RED XPLOSION X615
WZRK MISS COWBOY 1023Y

WZRK GALAHAD 9216G ET
WZRK 2012K
WZRK MISS RED X 4058B

GE-EPDs

CED	BW	WW	YW	MK	TM	CEM	SC	DOC	YG	CW	REA	MB	\$G	\$TPI
14	-2.1	66	99	29	61	8	0.55	15	-0.14	48	0.74	0.25	0.1	132.42
15%	15%	35%	40%	10%	20%	25%	75%	10%	55%	25%	50%	55%	45%	5%

Feed Efficiency Data:
ADG 4.6 // Feed/Gain 4.39

27 WZRK **MEAT & POTATOES** 7035M

01/25/2024 • PUREBRED(93/83.2) • HET POLLED (T) • RED • NPM3135876 • WZRK 7035M • BULL

Act. BW: 87
Adj. WW: 640
Adj. YW: 1231
Adj. REA: 16.84
Adj. FAT: 0.44
Adj. IMF: 2.885
Adj. SC:

HUNT CREDENTIALS 37C ET
COLE GENESIS 86G
COLE MISS XRATED 354A

WULFS APOSTLE T343A
WZRK ELIZABETH 7035E
WZRK MISS COWBOY 1036Y

HUNT TESTAMENT 40T
JKTW WHISKEY RIVER 985 W
MRL X-RATED 014X
COLE MISS PRODUCTION 874U
WULFS YANKEE K689Y
WULFS ULTRA DIAMOND 8571U
WULFS URBAN COWBOY 2149U
WZRK MISS KABOOM 3043N

GE-EPDs

CED	BW	WW	YW	MK	TM	CEM	SC	DOC	YG	CW	REA	MB	\$G	\$TPI
13	-1.5	55	80	33	60	8	0.6	13	-0.26	25	0.82	0.01	0.08	89.88
20%	10%	85%	85%	4%	40%	20%	45%	55%	95%	55%	90%	50%	75%	70%

Feed Efficiency Data:
ADG 4.3 // Feed/Gain 5.68

28 WZRK **MARCO POLO** 2032M

02/08/2024 • LIM-FLEX(69/61.9) • HOMO POLLED (P-3) • HET BLACK (T) • LFM3135888 • WZRK 2032M • BULL

Act. BW: 82
Adj. WW: 615
Adj. YW: 1335
Adj. REA: 16.32
Adj. FAT: 0.5
Adj. IMF: 2.605
Adj. SC:

TNGC EMPIRE 736E
WZRK JAMOCHA 1044J
WZRK MISS PRIMESTAR 1044Y

TMCK CASH FLOW 247C
MAGS BETH ET
WZRK PRIMESTAR 861P
WZRK MISS HOLYFIELD 1034L
WULFS BILLY THE KID K234B
WULFS ABRIL 3616A
H2R PROFITBUILDER B403
WZRK DOLL 6018D ET

WULFS EISENHOWER 3616E
WZRK 2032K
WZRK 8001F

GE-EPDs

CED	BW	WW	YW	MK	TM	CEM	SC	DOC	YG	CW	REA	MB	\$G	\$TPI
11	0.6	80	137	25	65	7	1.1	11	-0.11	38	0.51	0.26	0.17	99.66
45%	40%	20%	10%	50%	25%	35%	25%	80%	60%	40%	75%	60%	4%	50%

Feed Efficiency Data:
ADG 5.28 // Feed/Gain 4.32

29 WZRK **MASTERMIND** 6036M

01/15/2024 • PUREBRED(87/75.8) • HET POLLED (T) • HET BLACK (T) • NPM3136167 • WZRK 6036M • BULL

Act. BW: 87
Adj. WW: 600
Adj. YW: 1291
Adj. REA: 17.64
Adj. FAT: 0.39
Adj. IMF: 2.265
Adj. SC:

CELL ENVISION 7023E
WZRK KRYPTONITE 5022K
WZRK MISS ATOMIC 5022C

HUNT ATOMIC 17A
WZRK DAYTIME 6036D
WZRK MISS TUFFENUFF 3018A

AHCC BARN BURNER B907
PBRS ZSA ZSA 246Z
HUNT ATOMIC 17A
WZRK MISS WIEDLOAD 3040A
RUNL STETSON 850S
HUNT YAA 002Y
ROMN TUFF ENUFF 103T
WZRK MISS NASCAR 1064Y

GE-EPDs

CED	BW	WW	YW	MK	TM	CEM	SC	DOC	YG	CW	REA	MB	\$G	\$TPI
8	-2.2	58	87	29	58	6	0.75	15	-0.29	35	0.95	0.19	0.06	106.73
70%	5%	75%	75%	15%	50%	50%	30%	20%	95%	25%	70%	15%	95%	35%

Feed Efficiency Data:
ADG 5.10 // Feed/Gain 4.48

30 WZRK **MASERATI** 0012M

02/12/2024 • LIM-FLEX(72/65.4) • HOMO POLLED (T) • HOMO BLACK (P-2) • LFM3135897 • WZRK 0012M • BULL

Act. BW: 72
Adj. WW: 597
Adj. YW: 1238
Adj. REA: 14.8
Adj. FAT: 0.47
Adj. IMF: 2.825
Adj. SC:

MAGS ANCHOR
CJSL DATA BANK 6124D ET
AUTO CARMINDA 656S

LH WAR HERO 195W
MGS XIPHOPAGOUS
JCL LODESTAR 27L
AUTO CARMINDA 872P
MAGS CABLE
CJSL 4357B ET
AHCC RED XPLOSION X615
WZRK MISS WARDEN 7024T

MAGS FEDERAL RESERVE ET
WZRK 0012H
WZRK BON BON 4032B

GE-EPDs

CED	BW	WW	YW	MK	TM	CEM	SC	DOC	YG	CW	REA	MB	\$G	\$TPI
13	0.2	74	110	22	59	9	0.65	18	-0.11	38	0.43	0.34	0.09	106.95
20%	35%	35%	55%	80%	55%	10%	80%	2%	60%	40%	85%	40%	60%	35%

Feed Efficiency Data:
ADG 4.88 // Feed/Gain 4.60

31 WZRK **MAX** 2035M

02/09/2024 • PUREBRED(87/75.7) • HOMO POLLED (P-1) • RED • NPM3135889 • WZRK 2035M • BULL

Act. BW: 67
Adj. WW: 640
Adj. YW: 1256
Adj. REA: 15.64
Adj. FAT: 0.3
Adj. IMF: 2.25
Adj. SC:

TNGC EMPIRE 736E
WZRK JAMOCHA 1044J
WZRK MISS PRIMESTAR 1044Y

WULFS EISENHOWER 3616E
WZRK 2035K
WZRK 9050G

TMCK CASH FLOW 247C
MAGS BETH ET
WZRK PRIMESTAR 861P
WZRK MISS HOLYFIELD 1034L
WULFS BILLY THE KID K234B
WULFS ABRIL 3616A
HUNT CREDENTIALS 37C ET
WZRK COTTON CANDY 5024C

GE-EPDs

CED	BW	WW	YW	MK	TM	CEM	SC	DOC	YG	CW	REA	MB	\$G	\$TPI
13	1.8	81	134	30	71	8	0.89	19	-0.21	55	0.88	0.07	0.15	130.87
20%	65%	10%	3%	15%	3%	20%	25%	2%	>95%	1%	80%	30%	4%	4%

Feed Efficiency Data:
ADG 4.45 // Feed/Gain 4.89

32

WZRK MACHO MAN 1045M

02/07/2024 • PUREBRED(87/77.3) • HOMO POLLED (P-2) • BLACK • NPM3135886 • WZRK 1045M • BULL

Act. BW: 89
Adj. WW: 707
Adj. YW: 1313
Adj. REA: 17
Adj. FAT: 0.3
Adj. IMF: 3.21
Adj. SC:

WULFS HORTON 7358H
WULFS KACTUS 4841K
WULFS BESAME MUCHO 4841B

HUNT CREDENTIALS 37C ET
WULFS ENCARNASION 7358E
WULFS XTRACTOR X233X
WULFS YET IT'S TRUE 1401Y
AHCC ANGUS VALLEY 911B
AHCC MISS ROBIN A363
WULFS XCLUSIVE 2458X
WZRK MISS TUFFENUFF 1061Y

AHCC DAKOTA THUNDER 363D
WZRK 1045J

WZRK CHOCOLATE CHIP 5042C

GE-EPDs

CED	BW	WW	YW	MK	TM	CEM	SC	DOC	YG	CW	REA	MB	\$G	\$TPI
4	4.6	96	150	29	77	2	0.83	15	-0.24	45	0.9	0.28	0.11	114.05
>95%	>95%	1%	1%	15%	1%	95%	25%	20%	>95%	4%	80%	5%	35%	25%

Feed Efficiency Data:
ADG 4.43 // Feed/Gain 5.18

33

WZRK MOUNT RUSHMORE 8061M

02/17/2024 • PUREBRED(93/83.8) • HOMO POLLED (T) • RED • NPM3136172 • WZRK 8061M • BULL

Act. BW: 101
Adj. WW: 625
Adj. YW: 1306
Adj. REA: 18.9
Adj. FAT: 0.3
Adj. IMF: 1.48
Adj. SC:

WZRK GAME CHANGER 4015G
WZRK KOMBUCHA 7041K
WZRK ELLEN 7041E

HUNT CREDENTIALS 37C ET
WZRK MISS TUFFENUFF 4015B
WULFS APOSTLE T343A
WZRK MISS GENERAL 0074X
COLE ZONE 89Z
COLE MISS PRODUCTION 103Y
MAGS THE GENERAL
WZRK MISS LINEBACKER 602Z

COLE CANYON 83C
WZRK FRANNIE 8061F

WZRK MISS GENERAL 0074X

GE-EPDs

CED	BW	WW	YW	MK	TM	CEM	SC	DOC	YG	CW	REA	MB	\$G	\$TPI
9	2.1	72	109	29	65	4	1.3	14	-0.33	45	1.18	0.28	0.07	132.2
60%	70%	30%	30%	15%	15%	80%	4%	40%	85%	4%	25%	5%	90%	3%

Feed Efficiency Data:
ADG 4.9 // Feed/Gain 4.55

34

WZRK MONOPOLY 9016M

03/02/2024 • PUREBRED(94/84.6) • HOMO POLLED (P-2) • RED • NPM3135918 • WZRK 9016M • BULL

Act. BW: 98
Adj. WW: 625
Adj. YW: 1335
Adj. REA: 14.58
Adj. FAT: 0.39
Adj. IMF: 2.08
Adj. SC:

HUNT CREDENTIALS 37C ET
WZRK GAME CHANGER 4015G
WZRK MISS TUFFENUFF 4015B

HUNT TESTAMENT 40T
JKTW WHISKEY RIVER 985 W
ROMN TUFF ENUFF 103T
WZRK MISS MTO 0010X
IVY'S BUBBA WATSON HTZ24B
B BAR WHISKEY GIRL
AHCC RED XPLOSION X615
WZRK MISS NASCAR 8012U

B BAR BENTLEY 8D
WZRK 9016G

WZRK DOLL 6018D ET

GE-EPDs

CED	BW	WW	YW	MK	TM	CEM	SC	DOC	YG	CW	REA	MB	\$G	\$TPI
10	-0.2	65	100	31	64	6	1.57	20	-0.29	35	0.72	0.03	0.13	110.89
50%	25%	50%	50%	10%	15%	50%	2%	1%	95%	25%	95%	40%	15%	30%

Feed Efficiency Data:
ADG 4.84 // Feed/Gain 4.56

35

WZRK MOMMA'S BOY 7212M

03/26/2024 • PUREBRED(90/79.3) • HOMO POLLED (P-2) • BLACK • NPM3135945 • WZRK 7212M • BULL

Act. BW: 104
Adj. WW: 737
Adj. YW: 1373
Adj. REA: 15.96
Adj. FAT: 0.43
Adj. IMF: 2.96
Adj. SC:

CELL ENVISION 7023E
COLE JACKPOT 38J ET
COLE MISS XRATED 354A

AHCC BARN BURNER B907
PBRS ZSA ZSA 246Z
MRL X-RATED 014X
COLE MISS PRODUCTION 874U
WULFS SIRLOIN 3172S
WULFS MISSIVE 2258M
WULFS NASCAR G949N
WZRK MISS F LINER 1021L

WULFS XCELLSIOR X252X
WZRK ELATED 7212 ET

WZRK MISS NASCAR 8012U

GE-EPDs

CED	BW	WW	YW	MK	TM	CEM	SC	DOC	YG	CW	REA	MB	\$G	\$TPI
7	2.7	77	119	26	65	3	0.45	16	-0.35	25	0.78	0.28	0.13	95.76
80%	80%	15%	15%	40%	15%	90%	70%	10%	80%	55%	90%	5%	15%	60%

Feed Efficiency Data:
ADG 4.49 // Feed/Gain 4.77

36

WZRK MOTEL CALIFORNIA 3009M

02/04/2024 • PUREBRED(91/81.1) • HOMO POLLED (P-1) • HET BLACK (T) • NPM3135884 • WZRK 3009M • BULL

Act. BW: 92
Adj. WW: 596
Adj. YW: 1157
Adj. REA: 16.44
Adj. FAT: 0.39
Adj. IMF: 2.355
Adj. SC:

WULFS GALLAGHER 7056G
WZRK JACK BLACK 9048J
WZRK 9048G

WULFS XCELLSIOR X252X
WULFS EDWINNA 7056E
CJSL DATA BANK 6124D ET
WZRK MISS XTRACTOR 5044C
WULFS RANSOM 3059R
ROMN ROBERTA 35R
WULFS NASCAR G949N
WZRK MISS GENESIS 7027T

ROMN TUFF ENUFF 103T
WZRK MISS TUFFENUFF 3009A

WZRK MISS NASCAR 1014Y

GE-EPDs

CED	BW	WW	YW	MK	TM	CEM	SC	DOC	YG	CW	REA	MB	\$G	\$TPI
10	-3.3	42	50	24	45	6	0.3	8	-0.38	14	0.78	0.15	0.07	92.86
50%	2%	>95%	>95%	60%	>95%	50%	80%	90%	75%	85%	90%	15%	90%	65%

Feed Efficiency Data:
ADG 4.49 // Feed/Gain 5.01

37

WZRK MAGNIFICENT 7015M

03/12/2024 • LIM-FLEX(65/57.8) • HOMO POLLED (P-3) • BLACK • LFM3135936 • WZRK 7015M • BULL

Act. BW: 82
Adj. WW: 656
Adj. YW: 1292
Adj. REA: 16.58
Adj. FAT: 0.61
Adj. IMF: 3.69
Adj. SC:

CELL ENVISION 7023E
COLE JACKPOT 38J ET
COLE MISS XRATED 354A

AHCC BARN BURNER B907
PBRS ZSA ZSA 246Z
MRL X-RATED 014X
COLE MISS PRODUCTION 874U
LSF TAKEOVER 9943W
BROWN MS P707 Y6674
WZRK PRIME CUT 8012Y
WZRK MISS RAWHIDE 8055U

H2R PROFITBUILDER B403
WZRK ELAINE 7015E

WZRK BITTERSWEET 4013B

GE-EPDs

CED	BW	WW	YW	MK	TM	CEM	SC	DOC	YG	CW	REA	MB	\$G	\$TPI
12	-0.5	75	120	25	63	7	0.95	10	-0.14	24	0.76	0.57	0.08	88.29
30%	20%	30%	30%	50%	35%	35%	45%	90%	50%	85%	35%	10%	70%	75%

Feed Efficiency Data:
ADG 4.22 // Feed/Gain 5.18



WZRK Bulls

38

WZRK MAYHEM 5070M

03/01/2024 • PUREBRED(93/83) • HOMO POLLED (P-2) • HOMO BLACK (T) • NPM3135917 • WZRK 5070M • BULL

Act. BW: 88
Adj. WW: 606
Adj. YW: 1182
Adj. REA: 15.26
Adj. FAT: 0.29
Adj. IMF: 2.445
Adj. SC:

CELL ENVISION 7023E
CELL HISTORY BUFF 0245H ET
CELL MISS RESPONDER 6078D

WZRK PRIME CUT 8012Y
WZRK CANT TOUCH THIS 5070C ET
WZRK MISS NOBEL PRIZE6027

AHCC BARN BURNER B907
PBRs ZSA ZSA 246Z
COLE ABSOLUTE 05A
MAGS YODH
WZRK PRIMESTAR 861P
WZRK MISS NASCAR 8012U
WULFS NOBEL PRIZE 3861N
WZRK MISS KABOOM 3031N

GE-EPDs

WZRK

CED	BW	WW	YW	MK	TM	CEM	SC	DOC	YG	CW	REA	MB	\$G	\$TPI
9	1.6	67	107	24	57	4	1.15	10	-0.34	38	0.97	0.16	0.09	112.59
60%	60%	45%	35%	60%	55%	80%	10%	80%	85%	15%	70%	15%	60%	25%

Feed Efficiency Data:
ADG 4.1 // Feed/Gain 4.83

39

WZRK MISSION IMPOSSIBLE 0024M

03/06/2024 • PERCENTAGE(81/72.3) • HOMO POLLED (T) • BLACK • NXM3135930 • WZRK 0024M • BULL

Act. BW: 90
Adj. WW: 687
Adj. YW: 1239
Adj. REA: 15.96
Adj. FAT: 0.34
Adj. IMF: 2.53
Adj. SC:

CELL ENVISION 7023E
CELL HISTORY BUFF 0245H ET
CELL MISS RESPONDER 6078D

HUNT CREDENTIALS 37C ET
WZRK 0024H
WZRK ELAINE 7015E

AHCC BARN BURNER B907
PBRs ZSA ZSA 246Z
COLE ABSOLUTE 05A
MAGS YODH
HUNT TESTAMENT 40T
JKTW WHISKEY RIVER 985 W
H2R PROFITBUILDER B403
WZRK BITTERSWEET 4013B

GE-EPDs

WZRK

CED	BW	WW	YW	MK	TM	CEM	SC	DOC	YG	CW	REA	MB	\$G	\$TPI
8	1.1	68	104	31	65	5	1.75	9	-0.36	32	0.99	0.18	0.1	107.76
85%	65%	30%	30%	4%	10%	75%	2%	95%	20%	65%	25%	70%	45%	35%

Feed Efficiency Data:
ADG 4.07 // Feed/Gain 5.73

40

WZRK MEAT HEAD 7049M

03/06/2024 • PUREBRED(90/79.9) • HOMO POLLED (P-2) • HOMO BLACK (T) • NPM3135928 • WZRK 7049M • BULL

Act. BW: 101
Adj. WW: 625
Adj. YW: 1241
Adj. REA: 19.86
Adj. FAT: 0.35
Adj. IMF: 1.77
Adj. SC:

CELL ENVISION 7023E
COLE JACKPOT 38J ET
COLE MISS XRATED 354A

WZRK COMMANDO 8212C ET
WZRK EVANGELINA 7049E
WZRK MISS TUFFENUFF 0003X

AHCC BARN BURNER B907
PBRs ZSA ZSA 246Z
MRL X-RATED 014X
COLE MISS PRODUCTION 874U
WULFS APOSTLE T343A
WZRK MISS NASCAR 8012U
ROMN TUFF ENUFF 103T
WZRK MISS RAWHIDE 8048U

GE-EPDs

WZRK

CED	BW	WW	YW	MK	TM	CEM	SC	DOC	YG	CW	REA	MB	\$G	\$TPI
2	3.4	72	112	27	63	2	0.53	16	-0.5	39	1.49	0.07	0.09	116.23
>95%	90%	30%	25%	30%	20%	95%	55%	10%	30%	15%	2%	30%	60%	20%

Feed Efficiency Data:
ADG 3.98 // Feed/Gain 6.1



WZRK

Reference Sires



WULFS **GALLAGHER**7056G



WZRK **GAME CHANGER**4015G



CELL **HISTORY BUFF**0245H



CJSL **DATA BANK**6124D



COLE **JACKPOT**38J ET



WULFS **KACTUS**4841K

WZRK Reference Sires



COLE **GENESIS**86G



WULFS **JOINT VENTURE**G579J



WZRK **KOMBUCHA**7041K



WZRK **KALUA**0033K

Limousin Sires

COLE JACKPOT 38J ET
 CJSJL DATA BANK 6124D ET
 WZRK JACK BLACK 9048J
 WULFS KACTUS 4841K
 WZRK KOMBUCHA 7041K
 WZRK GAME CHANGER 4015G
 WZRK KRYPTONITE 5022K
 CELL HISTORY BUFF 0245H ET
 COLE GENESIS 86G
 WZRK KALUA 0033K
 WULFS JOINT VENTURE G579J
 WZRK ENUFF TIME 5027E

Sire

CELL ENVISION 7023E
 MAGS ANCHOR
 WULFS GALLAGHER 7056G
 WULFS HORTON 7358H
 WZRK GAME CHANGER 4015G
 HUNT CREDENTIALS 37C ET
 CELL ENVISION 7023E
 CELL ENVISION 7023E
 HUNT CREDENTIALS 37C ET
 WULFS GALLAGHER 7056G
 WULFS FIFTY T804F
 ROMN TUFF ENUFF 103T

Dam

COLE MISS XRATED 354A
 AUTO CARMINDA 656S
 WZRK 9048G
 WULFS BESAME MUCHO 4841B
 WZRK ELLEN 7041E
 WZRK MISS TUFFENUFF 4015B
 WZRK MISS ATOMIC 5022C
 CELL MISS RESPONDER 6078D
 COLE MISS XRATED 354A
 WZRK 0033H
 DHIL TMG 5795C ET
 WZRK MISS ATOMIC 5027C

CED	BW	WW	YW	MK	TM	CEM	SC	DOC	YG	CW	REA	MB	\$TPI	\$G
6	4.5	89	144	26	71	4	0.7	16	-0.24	47	1.1	0.46	126.39	0.11
10	1.6	85	131	13	55	6	0.3	15	-0.19	35	0.48	0.13	91.15	0.09
18	-3.4	63	86	24	56	9	0.5	12	-0.12	33	0.56	0.47	123.79	0.1
-2	6.4	105	161	30	83	-2	1.1	15	-0.35	51	1.03	0.2	128.11	0.13
6	2	71	108	34	70	3	2	19	-0.31	40	1.01	0.31	124.71	0.1
8	1.1	76	122	39	77	5	2.3	18	-0.11	57	0.61	0.39	148.21	0.17
8	-0.2	86	133	25	68	5	1.4	17	-0.26	49	1.03	0.2	117.84	0.06
6	3.6	86	146	23	66	4	2.3	11	-0.41	49	1.35	0.29	131.71	0.13
16	-1.5	66	102	33	66	11	0.5	13	-0.04	36	0.5	0.68	119.75	0.09
11	-1.3	72	102	32	68	5	1	19	-0.13	34	0.39	0.52	117.77	0.11
6	2.6	66	106	32	64	3	0.5	14	-0.24	16	0.61	-0.02	54.12	0.1
20	-4.3	56	86	23	50	14	0.7	14	-0.5	16	0.95	0.17	99.59	0.1

Lim-Flex Sires

TNGC EMPIRE 736E
 WULFS GALLAGHER 7056G
 WZRK JAMOCHA 1044J

Sire

TMCK CASH FLOW 247C
 WULFS XCELLSIOR X252X
 TNGC EMPIRE 736E

Dam

MAGS BETH ET
 WULFS EDWINNA 7056E
 WZRK MISS PRIMESTAR 1044Y

CED	BW	WW	YW	MK	TM	CEM	SC	DOC	YG	CW	REA	MB	\$TPI	\$G
9	1	87	152	16	60	3	1.5	23	0.14	49	0.23	0.54	103.22	0.17
20	-5.4	55	76	31	58	9	0.4	16	0.01	22	0.34	0.68	111.95	0.13
13	-1.7	61	109	20	50	6	0.5	16	-0.16	40	0.55	0.34	118.23	0.18

NALF'S NEW TERMINAL PROFIT INDEX (TPI) & FEED CONVERSION SUB-INDEX (\$G)

You may be wondering what the new NALF index's are and how too apply them correctly to your operation. It is important to remember that the TPI index is not an index for selecting replacement heifers or female selection. This index is for identifying **Terminal Sires** that excel in feeding performance in today's formula and grid-based marketing of todays fed cattle environment.

The North American Limousin Foundation released its Terminal Index last February which is built utilizing iGENDEC. Recently at its summer board meeting, the NALF board of directors approved an adjustment to the Terminal Profit Index which increases the emphasis on dry matter conversion rates by incorporating weaning to yearling weight spread for cattle, PWG (YW-WW) weighted by a marginal economic value of \$.277).

iGENDEC is a web-based tool to enable the construction of economically optimal selection indexes. iGENDEC allows for index customization through adjustment of economic and production parameters to reflect actual historical price data and made available via the Beef Improvement Federation.

The new **Terminal Profit Index (TPI)** has been constructed to identify sires that produce the highest profit potential for fed cattle utilizing traits that directly impact feeding performance and superior carcass traits. The new index was created using the most recent 10 years of USDA reported fed cattle and grid pricing data, K-State reported feedlot cattle performance and NALF data. The new TPI index models the use of Limousin sires on Angus based cows with all calves marketed on a value-based carcass grid. The units reported represent expected differences in profit per mating.

The following EPD traits are included in TPI and their corresponding Marginal Economic values used in the Terminal Profit Index. **HCW \$1.608, REA \$23.36, FAT-\$162.185, MS \$43.01, DMI -\$20.856, CE \$.957, PWG SPREAD \$.277.**

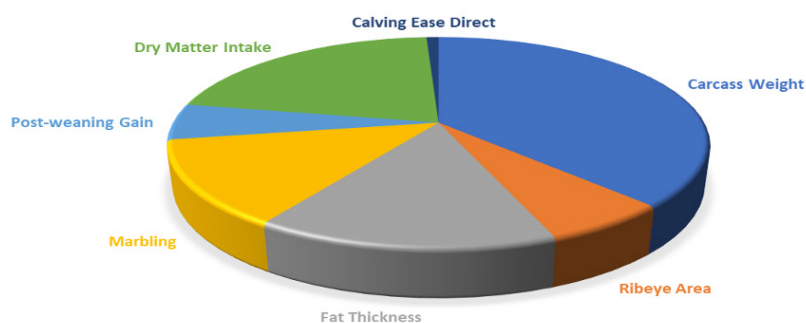
The marginal values which are determined by parameters in the iGENDEC program and simply multiplied by each EPD trait and then added up for a total \$ index value on each animal in the herdbook. The range seen on NALF's 4500 active sires reflects a high of \$210.00 and a low of -\$16.00 with a mean of \$94.00.

It is important to remember that the Terminal Profit Index is specifically designed for terminal sires that excel in feeding performance, carcass characteristics on an economic relevant basis. It utilizes actual historical price data and is much more reflective of today's current fed cattle market and feeding performance requirements in the fed cattle industry.



RELATIVE TRAIT EMPHASIS OF TRAITS USED IN TPI INDEX

FIGURE 1. UPDATED NALF TERMINAL INDEX
RELATIVE TRAIT EMPHASIS (%)



THE FEED EFFICIENCY SUB-INDEX, \$G OR \$GAIN

Dry matter intake is a key component to \$G along with an animal's PWG potential to reflect an animal's feed conversion capability. The key to DMI is to remember a lower percentile rank is not necessarily a bad thing. Cattle that are giving you back adequate gain for their intake are still producing pounds efficiently. The real use of DMI is to get to the correct expression of feed conversion rates. **\$G is used to find cattle that are superior for Feed Efficiency.**

You will find cattle that range in the 50th to 90th percentile for DMI but rank exceptionally well on their new (\$ Gain EPD) if they are converting their intake. The \$G sub-index that will be published weekly by IGS simply measures cost of feed and an animal's individual intake versus the value of a fed steer on a 5-year average adjusted by an individual animal's gain.

The formula for \$G is listed below:

$(\text{Ration cost @ } \$280 \text{ per ton}/2000 \text{ lbs} = -\$0.14 \times \text{DMI EPD}) + (\text{Fed market value at } \$1.17/160 \text{ days} \times \text{PWG}) = \$G \text{ (Feed efficiency sub index)}$

\$G for feed conversion represents the marginal value of gain over feed cost. The higher the \$G sub-index EPD, the better or reflective of superior conversion of feed to pounds gained. (Cost of feed based off an animal's DMI is calculated as a negative number and added back to the market value per pound X an animal's post weaning gain).

When evaluating a sire for \$G, The EPD range for All Limousin Active sires reflects a high of .25, an average of .10 and a low of -0.03 for NALF's active sires.



NALF.ORG

LIMOUSIN TODAY - PROFIT TOMORROW

Thank You



FOR BLESSING US WITH 45 EXCEPTIONAL YEARS!



We appreciate your support and interest in our breeding program. We take the people side of the business very seriously and never for granted, that's why producing a quality product and making sure our customers are satisfied has always been top priority. Simply put, your attendance and participation in our sale event has humbled us, and we wish you many successes with your purchases.

THANK YOU FOR TAKING TIME TO VIEW THE CATALOG AND ALLOWING US THE OPPORTUNITY TO EARN YOUR BUSINESS.

SIGHT-UNSEEN PURCHASE PROGRAM If you're unable to attend you tell us what you're looking for, we'll do our best to meet those needs, and if you're not satisfied when you get your bull(s), you don't own them!

SALE AVERAGES

Number of Lots

Sale Gross

Sale Average

Yearling Bulls

NOTES



Special Announcement:

In the unlikely event of winter storm sale postponement, the new sale date would be Friday, March 7, 2025 @ 5:00pm.



Marketing Management

MC Marketing Management
648 West Sawgrass Trail
Dakota Dunes, SD 57049

Catalog Design By:
Mallory Blunier, Limousin Media

Wieczorek Limousin
PRODUCTION SALE

AT THE RANCH • MT VERNON, SD

***NEW TIME* 5:00 PM CST**

02.28.25