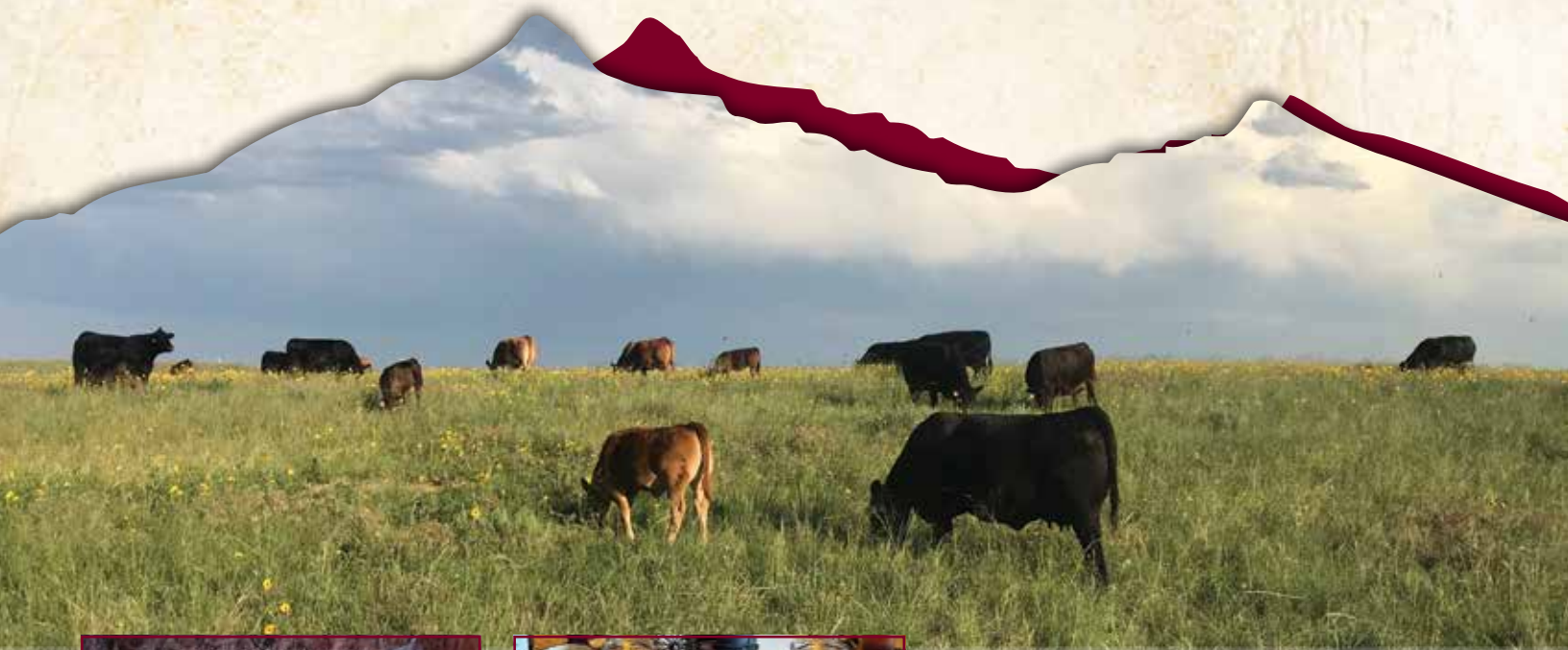


Pasture To Plate Performance Sale, Vol. II

SATURDAY MARCH 29, 2025

1 p.m. MDT • Live Auction

KERSEY, CO



OCHSNER
Limousin

KERSEY, CO

Pasture To Plate Performance Sale, Vol. II

SATURDAY, MARCH 29, 2025

Live Auction · 1 p.m. MDT · Kersey, CO

Welcome friends!

On behalf of the entire Ochsner family and our herdsman, Stratton Wotowey, it's my pleasure to welcome you to our Pasture to Plate Performance Sale. We greatly appreciate your interest in our program and our sale offering!

We're extremely grateful for the acceptance our genetics garnered from seedstock producers and commercial cattlemen alike in our inaugural event and we believe this year's offering is even stronger!

Data plays an increasingly important role in selecting genetic inputs. To that end, you will notice that in addition to the standard weights and measurements, all cattle in the offering have actual carcass ultrasound data and they all have genomically-enhanced EPDs. Depending on the individual trait, these genomically enhanced EPDs provide as much insight into the actual breeding values of an animal as you could expect to learn after collecting data from 15–25 head of progeny. Be sure to check out our supplement sheet sale day for updated EPDs and actual scrotal measurements.

A new piece of information we're providing this year is a PAP score. Dr. Tim Holt from CSU PAP tested all of the sale cattle at the ranch. According to Dr. Holt, based on our elevation, the PAP scores provided have a repeatability of 60%. (See chart on Page 20). So, while they are not 100% accurate, they do provide insight into the bulls that will likely not be a good fit for elevations above 5000 feet. If you purchase a bull with a PAP score of 40 or below, we will guarantee the bull will pass a PAP test at elevation, or you can return the bull for a refund prior to the breeding season.

These are exciting times to be a beef producer. The second strongest wholesale demand for beef in 30 years, coupled with cow numbers that are as low as they have been in 75 years have resulted in record-high prices for all classes of cattle and an optimistic outlook for 2025!

Whether you're looking for a calving ease bull to use on a set of replacement heifers, some high performing, carcass-oriented bulls that can help you achieve grid premiums, or bulls you can use to create marketable feeders and functional hybrid replacement females, we have bulls designed to fit those specific needs.

As you study this catalog, I hope it's evident that our breeding program isn't built around single-trait selection, fads or genetic extremes. Instead, our goal is to create structurally sound, balanced and complete cattle that are productive in the pasture, profitable in the feedyard and palatable on the plate!

Please give Stratton or I a call if we can be of any assistance. We look forward to seeing you on the 29th!

Best regards,
Kevin Ochsner



OCHSNER *Limousin*

KEVIN, JULIE, CAITLYN, ASHLYN & COLLIN OCHSNER

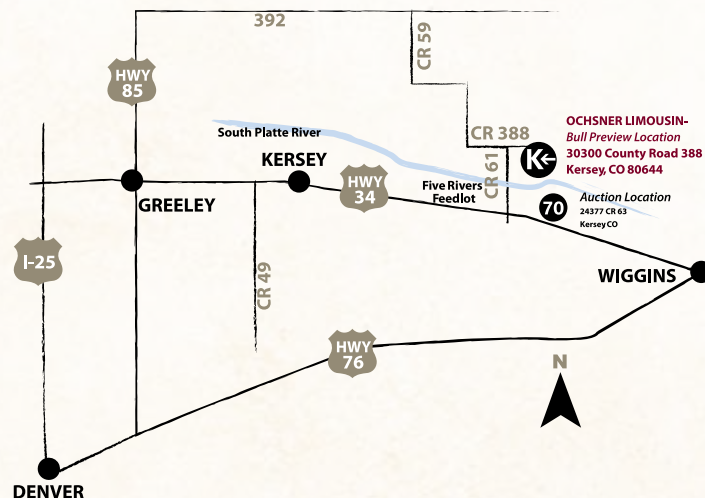
30300 CR 388 · Kersey, CO 80644

Kevin: 970-396-5525, KevinKOchsner@gmail.com

Stratton Wotowey (Herdsman): 970-222-1984

Follow us on

View videos at www.ocattle.com





TERMS AND CONDITIONS:

Bidding—In addition to the in-person auction in Kersey, CO, the auction will also be broadcast live on DV Auctions. We ask that you register to bid through DVAuctions within 24 hours of the sale.

Phone Bidding—If for any reason you are uncomfortable with bidding online or have trouble getting online, please contact Kevin or Stratton or a member of the marketing team to arrange for phone bidding options.

Payment Terms—We offer customers the option of paying 50% of purchase price sale day and the remaining balance when bull is picked up or delivered.

Free Wintering until April 15. We will be happy to feed and house the bulls/heifers until April 15. After that date, buyers will be charged \$3.50 per head/day per bull/heifer.

Volume Purchase—Buy 5–9 bulls and get a 5% discount, 10 bulls or more and get a 10% discount.

Delivery Options—

Option 1: We will provide a \$50 discount per bull/heifer for any cattle taken home the day of the sale.

Option 2: We will provide free delivery within the state of Colorado and to central points in the contiguous states of WY, NE, KS, UT, NM, OK and TX Panhandle.

Option 3: For any purchase beyond the contiguous states mentioned above, we will help coordinate affordable delivery options and will pay the first \$100 of delivery charges.

Sight unseen guarantee – If you're unable to attend the sale in person, contact Kevin or Stratton or a member of our marketing team. We will assist you in making a purchase decision and if you aren't satisfied with your purchase after you see him/her in-person, you don't own the animal.

Announcements—Announcements made sale day by the owners, auctioneer or sale management take precedence over printed material in the catalog or other printed material associated with the sale.

Breeding Guarantee – Scrotal measurements are actual, not adjusted, as measured by Dr. Michael Mathis at the time of fertility exam and will be provided on the supplement sheet. All of our bulls have passed a fertility soundness exam unless indicated on the sale block. All bulls are guaranteed breeding sound.

We offer a first-breeding season guarantee for all bulls selling for \$4,000 - \$10,000 (see insurance options below for purchases that exceed \$10,000). If a bull does not complete the first full breeding season, Ochsner Limousin will share in 50% of the difference between purchase price and salvage value of the injured bull or \$1,000, whichever is greater. This credit will be applied toward a bull of equal or greater value if one is available, or will be provided as a sale credit in next year's sale. The first breeding season will be defined as 90 days after turnout. Buyer is responsible for notifying the seller immediately when injury occurs and is required to have the injured bull diagnosed by a licensed veterinarian. To qualify for this credit, buyer must notify seller and provide veterinarian's diagnosis prior to selling the bull. All claims must be made prior to September 1, 2025. Please note, this is not a life insurance policy. It does not include loss due to neglect, sickness or an act of God (lightning, snake bite, flood, etc.)

Livestock Insurance—Livestock mortality insurance will be available sale day. If cattle are left at the ranch, we strongly suggest you insure your purchase. The cattle become your property when they are sold. In order to guarantee bulls valued at \$10,000 or more, we ask that you purchase insurance on your investment. We will be happy to pay 50% of the premium for 1 year of mortality insurance on bulls valued at \$10,000 or more.

PAP Testing—All animals selling have been PAP tested. See page 20 for more detailed information.

Feed Program—The bulls have been developed on a ration formulated by Kelcey Swyers of Grassland Nutrition consisting of corn silage, grass hay, alfalfa hay, triticale, cracked corn and dried distillers with a target of 3.0 - 3.25 ADG.

Herd Health—Veterinarian: Dr. Mike Mathis (970) 396-9091

- Birth: Inforce 3 and Ultrabac CD
- Branding: Bovi-Shield Gold One Shot, Vision 7 with Spur, Inforce 3
- Pre-Weaning: Bovi-Shield Gold One Shot, Vision 7, Endovac-Beef
- Weaning: Bovi-shield Gold 5, Inforce 3, Exit Gold Pour-on, FerAppease
- Yearling Ultrasound: CattleMaster Gold FP5 L5—bulls and heifers
- Pre-Sale: Ivermectin Pour-on

General Guarantee—All cattle sell under the standard North American Limousin Foundation guarantee.

Registration and Updated EPDs—All cattle are registered with the North American Limousin Foundation. All EPDs are the most current at the time of catalog printing conducted by IGS and the North American Limousin Foundation. Please note that EPDs may change from the time the sale catalog is printed until registration papers are transferred. EPDs in this catalog are current as of 3/5/25.

Supplement Sheet—Supplement sheets with any updates/changes to the printed catalog information will be available on DVAuctions.com, Ochsnercattle.com and on the Ochsner Limousin Facebook page prior to the sale.

SELLING

39 Limousin and Lim-Flex Bulls

12 Limousin and Lim-Flex Heifers

SALE DAY SCHEDULE

8:00 A.M. - NOON

Sale Offering Preview

11:30 A.M. - 1:00 P.M.

Lunch

12:30 P.M. - 1:00 P.M.

Live Entertainment: Caitlyn Ochsner

1:00 P.M.

Live Auction

Online Provider DVAuction.com



NOTE: Sale cattle can be viewed at
Ochsner Limousin
30300 County Road 388, Kersey, CO 80644

Lunch, Entertainment and Live Auction

70 Ranch Shop
24377 County Road 63, Kersey, CO 80644

Sale Management



Kiley McKinna 402-350-3447
Wiley Fanta 320-287-0751

Auctioneer

C.K. "Sonny" Booth 918-533-5587

Ring Staff

Andy Rest 406-670-5678
Curt Cox 307-234-2700

Sale Day Phones

Kevin Ochsner 970-396-5525
Stratton Wotowey 970-222-1984
Kiley McKinna 402-350-3447
Wiley Fanta 320-287-0751
DV Auctions Support 402-474-5557

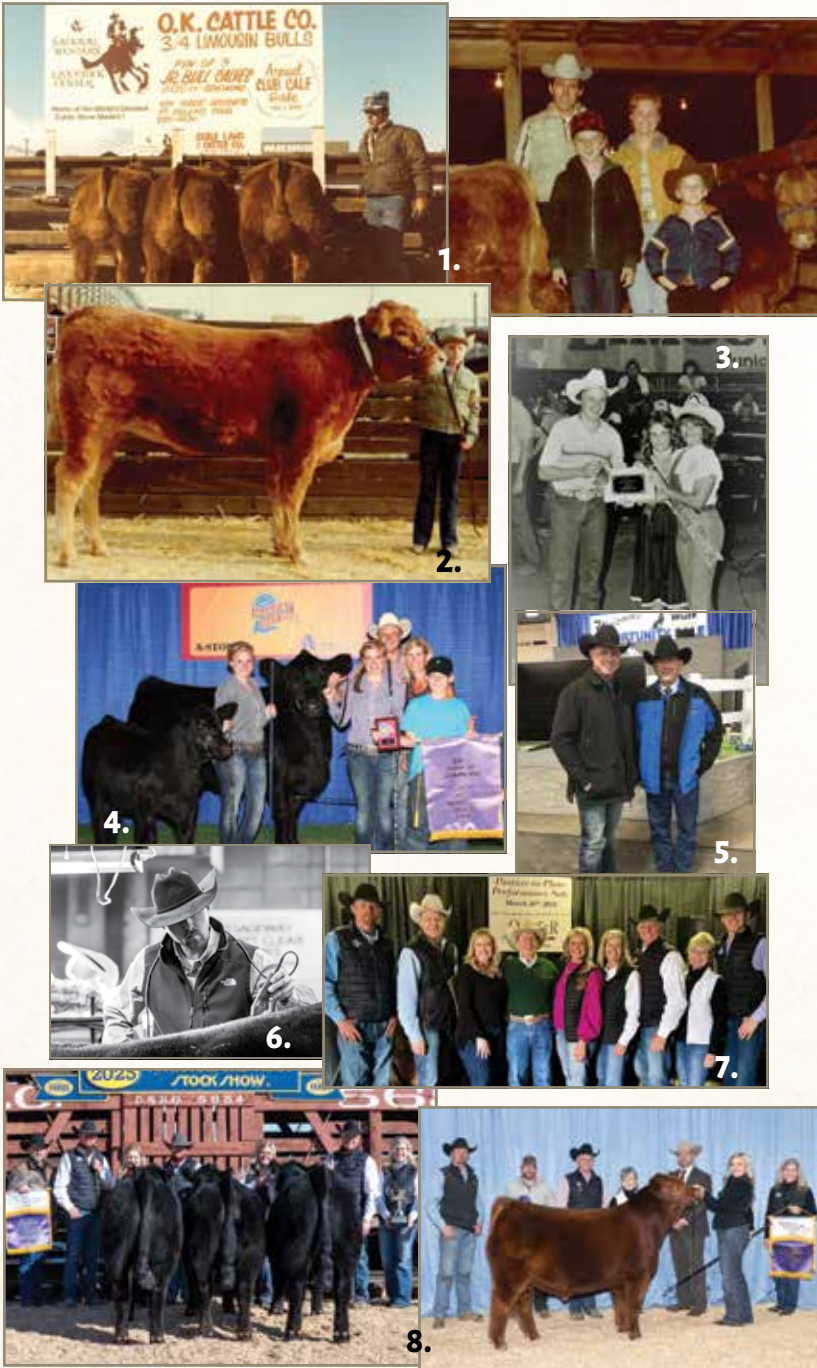
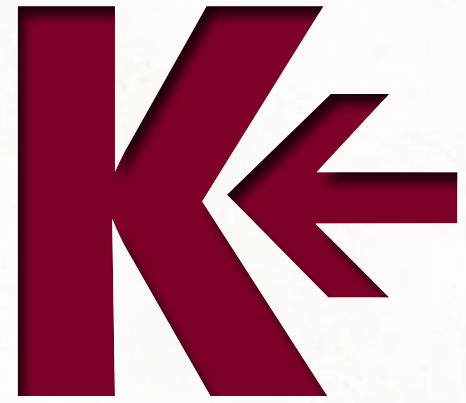
Accommodations

Cobblestone Inn and Suites 970-351-9411
309 Hill Street, Kersey, CO 80644

Airport

Denver International Airport (DIA) (52 miles from ranch)

Passion... Persistence... Progress



Ochsner Limousin, LLC is a registered seedstock operation located in Kersey, Colorado, producing Limousin and Lim-Flex (Limousin x Angus Hybrid) cattle. In addition to our seedstock operation, our family has built a direct-to-consumer beef business, Ochsner Tender-Raised Beef, that markets beef to consumers along the front range of Colorado.

Driven by the vision of an integrated, “pasture to plate” business model, we’ve taken a balanced, industry-oriented approach to genetics and beef cattle production. We are focused on producing sound structured, performance-oriented, functional cattle that are productive in the pasture, profitable in the feedyard and palatable on the plate!

- 1.** Kevin’s dad and mom, Ken and Roberta Ochsner, began breeding Limousin cattle in 1972. They sold club calves to 4-H and FFA members and showed Limousin pens and carloads at the National Western Stock Show throughout the late 70’s and early 80’s.
- 2.** In 1977, Kevin purchased UO Brigitte 54G from Dale Runnion at the National Western Stock Show to begin his Limousin herd.
- 3.** In addition to 4-H and FFA activities, Kevin was actively involved in the North American Junior Limousin Association – showing cattle at Junior National events, competing in speech contests and serving on the NALJA Board.
- 4.** All three of Kevin and Julie’s children have grown up in the Limousin breed raising and showing Limousin cattle and have been instrumental in growing the operation.
- 5.** For 16 years, Ochsner Limousin served as a satellite cooperator herd for Wulf Cattle supplying bulls for their annual Opportunity Sale.
- 6.** In 2022, Stratton Wotowey joined the team at Ochsner Limousin as herdsman and has become an invaluable member of our team!
- 7.** In 2024, the Ochsner family hosted our inaugural production sale selling cattle to buyers in 10 states.
- 8.** In 2025, Ochsner Limousin exhibited the Grand Champion Pen of Limousin bulls and the Grand Champion Bull, NWSS.



LOT 1

1 OLIM MAVERICK 417M

LIM-FLEX(67/60.4) • BULL • HOMO POLLED (T) • RED
03/04/2024 • OLIM 417M • LFM3136597

MAGS FEDERAL RESERVE ET
MAGS KOOPER RUSH 2622K ET
MAGS DARE TO LOVE ME ET

CELL ENVISION 7023E
OLIM GWYNDOLEN 987G
KEVN YOURS TRULY 116Y

MAGS CABLE
CJSL 4357B ET
MAGS WINSTON
MAGS XTRA REST
AHCC BARN BURNER B907
PBR5 ZSA ZSA 246Z
SPRNG CRKS URLACHER 311U
KEVN TIRAMASU 743T

PAP
35

GE-EPDs

	CE	BW	WW	YW	MK	TM	CM	SC	DC	YG	CW	RE	MB	\$TPI
EPDs	9	2.8	86	131	23	66	5	1.02	16	-.05	42	.68	.36	101
%Rank	75	90	10	15	70	20	70	35	10	75	30	45	40	50

Act. BW: 89 • Adj. WW: 691 • Adj. YW: 1257 • UFAT: 0.50 • UREA: 14.56 • UIMF: 3.35

Maverick...the perfect name for a bull that has all the ingredients to be a breed changer! His unique combination of structure, softness, stoutness and style coupled with his breed-leading genetic values earned him the honor of being named Grand Champion bull at the 2025 NWSS Limousin Show.

Phenotypically, he is a wide-based, soft made bull that is deep bodied, sound at the ground and fluid in his movement. This, coupled with his EPDs that place him in the top 10 % for weaning, top 15 % for yearling and the top 10 % for docility, suggest he has much to offer the Limousin breed! Plus, he's backed by one of the best cows in the herd! OLIM Gwyndolen 987G is a deep bodied, sound structured, feminine Envision sired cow who catches everyone's eye who walks through the pasture. She is also the granddam of our high-selling heifer in last year's sale OLIM Latte 373L, who was named Reserve Grand Champion Limousin Female in the Junior Show at the 2025 NWSS for Kyle Ruehle.

Use Maverick on purebred cows to add genuine performance, rib shape and structural soundness or breed him to your favorite Lim-Flex to add power, growth and performance along with a show stopping profile—the options are endless!

Retaining 1/3 semen interest



LOT 1 • 2025 NWSS Grand Champion Bull



OLIM GWYNDOLEN 987G • Dam of Lot 1



LOT 2

2

OLIM MATADOR 437M

PUREBRED(100/86.3) • BULL • HOMO POLLED (T) • HET BLACK (T)
02/29/2024 • OLIM 437M • NPM3136595

CELL ENVISION 7023E
VL HUNKER DOWN 003H
KORC SNOW ANGEL 301A

HUNT CREDENTIALS 37C ET
OLIM JOY 106J

CAIT ELUSIVE TREASURE 729E

AHCC BARN BURNER B907
PBRS ZSA ZSA 246Z
WULFS XISTANCE V638X
VL SNOW PRINCESS
HUNT TESTAMENT 40T
JKTW WHISKEY RIVER 985 W
WULFS COMPLIANT K687C ET
CAIT YOUR MY TREASURE

PAP
41

GE-EPDs

	CE	BW	WW	YW	MK	TM	CM	SC	DC	YG	CW	RE	MB	\$TPI
EPDs	13	-.6	71	115	26	61	8	.88	19	-.3	49	1.27	.24	151
%Rank	20	20	30	20	40	35	20	25	2	90	2	15	10	1

Act. BW: 84 • Adj. WW: 708 • Adj. YW: 1354 • UFAT: 0.43 • UREA: 16.48 • UIMF: 2.60

If you've been searching for a black, purebred, homo-polled calving-ease bull that has the look and genetic values to sire front pasture females and sale-topping bulls, you've come to the right place!

You can burn the tires off your pickup trying to find a purebred Limousin bull that couples at 13 CED and -.6 BW with a 115 YW EPD! Combine that with the fact that he's top 2% in Docility, top 2% in carcass weight, top 15% in REA, top 10% in MARB and top 1% in \$TPI, and it's obvious this bull can add value to any breeding program, and the breed itself!

Matador was a member of our Grand Champion Pen of Limousin Bulls at the 2025 National Western Stock Show. His productive Credentials-sired dam has weaned two bull calves ratioing 93 at birth, 106 at yearling and 115 for REA. She's currently nursing her third bull calf and has calved within 12 days of February 29th three years in a row.

Here's a bull that exemplifies our slogan of "pasture to plate performance!"

Retaining 1/3 semen interest



2025 NWSS CHAMPION LIMOUSIN PEN



LOT 3

3

OLIM MAGNUM 499M

PERCENTAGE(81/71.9) • BULL • HOMO POLLED (T) • BLACK
02/18/2024 • OLIM 499M • NXM3136587

MAGS CABLE
OLIM KEYSTONE 23K
OLIM FORTUNA 860F

LFLC BANK ACCOUNT 701B
OLIM HARLEQUIN 072H

OLIM DESERT ROSE 613D

MAGS APPLESEED
MAGS ZEQUIN
WULFS ALLIED FORCE C303A
CAIT YELLOW ROSE 128Y
WULFS ZIPLOCK N922Z
LFLC 701X XTRA GOOD
WULFS XCELLSIOR X252X
KEVN ZAZZLE 249Z

PAP
36

GE-EPDS

	CE	BW	WW	YW	MK	TM	CM	SC	DC	YG	CW	RE	MB	\$TPI
EPDS	12	2.6	80	119	26	66	8	.61	16	-.39	29	1.14	-.15	91
%Rank	30	85	10	20	35	15	25	65	10	25	65	15	>95	70

Act. BW: 86 • Adj. WW: 683 • Adj. YW: 1277 • UFAT: 0.35 • UREA: 16.26 • UIMF: 3.035

As the anchor bull in our Grand Champion Denver pen, Magnum packs a powerful punch! Wide based, thick topped, and deep quartered, he charts EPD's in the top 10% for weaning growth, the top 20% for yearling growth, the top 10% for docility and the top 15% for REA! His actual scan data was even more impressive as he combined a 16.2 inch ribeye (ratioed 114) with a 3.035 IMF (ratioed 107) and only .36 of actual backfat.

Magnum is sired by OLIM Keystone, the lead bull of our Grand Champion Lim-Flex Pen at 2023 NWSS, now working in the Rolling Acres Limousin program in West Virginia. He's 81% Limousin and packs the traits to improve the pattern and rib shape of a set of purebred cows, or power-up a set of Lim-flex cows with additional muscle and dimension.

Retaining 1/3 semen interest



OLIM KEYSTONE 23K • Sire of Lot 3



LOT 4



MAGS CABLE • Maternal grandsire of Lot 4



WULFS JOINT VENTURE G579J • Sire of Lot 5



LOT 5

4 OLIM MANIFEST 532M

PUREBRED(87/73.9) • BULL • HOMO POLLED (T) • HOMO BLACK (T)
02/25/2024 • OLIM 532M • NPM3136594

CELL ENVISION 7023E
VL HUNKER DOWN 003H
KORC SNOW ANGEL 301A

AHCC BARN BURNER B907
PBR5 ZSA ZSA 246Z
WULFS XISTANCE V638X
VL SNOW PRINCESS
MAGS APPLESEED
MAGS ZEQUIN
DHVO TREY 133R
DVFC FERGIE 109T

MAGS CABLE
OLIM HOMEGIRL 068H
EF YING YANG 662Y

PAP
40

GE-EPDs

	CE	BW	WW	YW	MK	TM	CM	SC	DC	YG	CW	RE	MB	\$TPI
EPDS	9	2.5	73	112	22	58	4	.97	17	-.36	28	1	-.1	90
%Rank	60	75	25	25	80	50	80	15	5	80	45	60	80	70

Act. BW: 99 • Adj. WW: 662 • Adj. YW: 1188 • UFAT: 0.27 • UREA: 14.10 • UIMF: 2.25

The third bull in this trio of VL Hunker Down sons offers the same look, balance and performance of his half-brothers and puts it all into a homozygous black/homozygous polled package. He was the alternate in our Champion Denver pen and is out of a deep bodied, feminine, attractively designed MAGS Cable female. With weaning and yearling growth numbers in the top 25% of the breed, this long necked, long spined bull will add stretch, length and performance to your calf crop!

5 OLIM MAGELLAN 484M

PERCENTAGE(83/74.6) • BULL • HOMO POLLED (P-2) • HET BLACK (T)
02/06/2024 • OLIM 484M • NXM3136570

WULFS FIFTY T804F
WULFS JOINT VENTURE G579J
DHIL TMG 5795C ET

LFLC BANK ACCOUNT 701B
TECS DANTEAN 1629D
MAGS AVIATOR
PBR5 TOUCH ME GENTLY 798T
MAGS AVIATOR
CAIT CHERRY BOMB 536C
WULFS WINGSPAN 6080W
KEVN XCLAMATION 026X

PAP
40

GE-EPDs

	CE	BW	WW	YW	MK	TM	CM	SC	DC	YG	CW	RE	MB	\$TPI
EPDS	11	-.2	57	86	31	59	5	.33	13	-.19	28	.68	.17	94
%Rank	45	30	80	80	10	40	75	90	45	60	65	65	60	60

Act. BW: 85 • Adj. WW: 615 • Adj. YW: 1081 • UFAT: 0.40 • UREA: 10.62 • UIMF: 3.175

OLIM Magellan has a way of catching your eye every time you walk into the pen. He's a sound structured, square hipped, deep ribbed, and deep flanked, bull with a stunning profile. Sired by Wulfs Joint Venture, the Supreme Champion Bull over all breeds at the 2023 Black Hills Sctock Show, Magellan has the look to sire some champions of his own!

His genomically enhanced EPD's indicate that he should be suitable for use on heifers. And, if his dam, OLIM Josey 174J is any indication, you'll definitely want to retain his daughters! She is a moderate framed, beautiful uddered, coming four-year old cow that calved for the first time at 22 months of age and is currently nursing her third calf achieving an average calving interval of 369 days!

Retaining 1/3 semen interest



LOT 6



DLTM JOUSTER 107J • Sire of Lot 6



OLIM KINGSMAN 21K B2F • Sire of Lot 7



LOT 7

6 OLIM MASTERPIECE 516M

LIM-FLEX(46/40.6) • BULL • HOMO POLLED (T) • HOMO BLACK (T)
02/08/2024 • OLIM 516M • LFM3136576

DEBV GLADIATOR 917G
DLTM JOUSTER 107J
SJH FRONTIER GAL 8707

CELL ENVISION 7023E
DEBV COPPER PENNY
S&R ROUNDTABLE J328
EXAR FRONTIER GAL 9633
MAGS AVIATOR
CJSL 2090Z
PVF INSIGHT 0129
AUTO AMERIE 228A

CJSL CREED 5042C
OLIM KATELYNN 215K
CAIT ETERNAL PROMISE 779E ET

PAP
62

GE-EPDs

	CE	BW	WW	YW	MK	TM	CM	SC	DC	YG	CW	RE	MB	\$TPI
EPDs	17	-1.3	71	117	29	65	12	.57	13	-.1	45	.96	.47	130
%Rank	2	10	45	35	20	25	1	85	50	60	20	15	20	10

Act. BW: 78 • Adj. WW: 685 • Adj. YW: 1299 • UFAT: 0.36 • UREA: 15.96 • UIMF: 4.445

It's no coincidence this bull is named Masterpiece. Sired by DTLM Joustler 107J and out of a granddaughter of Caitlyn's National Champion AUTO Amerie, this double homozygous bull is one of the most complete, balanced bulls in the sale. Study his genetic values and you'll see that Masterpiece checks all the boxes! Here's a bull that is in the top 2% for CED, top 10% for BW and the top 35% for YW. His carcass numbers are even more impressive as he ranks in the top 15% for REA, top 20% for Marb and the top 10% for \$TPI. He combined an adjusted REA of 15.96 with an IMF of 4.45—the highest in the sale offering. Bulls like this don't come around everyday. Here's your chance to own a Masterpiece!

Retaining 1/3 semen interest and an option for either spring or fall possession based on buyer preference.

7 OLIM MARVAL 496M

LIM-FLEX(53/47.4) • BULL • HOMO POLLED (P-2) • BLACK
03/05/2024 • OLIM 496M • LFM3136599

MAGS CABLE
OLIM KINGSMAN 21K B2F
OLIM FLICKA 837F

MAGS APPEESED
MAGS ZEQUIN
WULFS COOLEY 3710C B2F
CAIT CALIFORNIA GIRL 501C
LACY GOLD BAR 8123
BIEBER LAURA 158W
WULFS NOBEL PRIZE 3861N
WULFS JOY BELLS 9202J

PAP
37

GE-EPDs

	CE	BW	WW	YW	MK	TM	CM	SC	DC	YG	CW	RE	MB	\$TPI
EPDs	17	-.2	68	104	32	66	10	.95	12	-.12	31	.55	.27	92
%Rank	2	25	60	65	5	20	5	45	65	55	65	65	55	70

Act. BW: 83 • Adj. WW: 689 • Adj. YW: 1239 • UFAT: 0.34 • UREA: 13.18 • UIMF: 3.065

Lot 7 is a son of OLIM Kingsman, our anchor bull from our 2022 NWSS Grand Champion Pen, who is now at work in the Wulf Cattle program. His dam is a cow we purchased as an embryo from Wulfs sired by Bieber Hard Drive and out of the prolific Wulfs Soloist 6284S—a donor that has made a name for herself by producing multiple high-sellers in their annual Opportunity Sale—including Wulfs Compliant. A smooth shouldered, long necked square hipped bull with a CED EPD of 17 and a BW EPD of -.2, Marval should be a safe choice for heifers. With a Stayability EPD in the top 1% of the breed, he's bound to produce some exceptional replacement females as well. Moreover, given his PAP score of 37, he's a great candidate for the high country. Retaining 1/3 semen interest

8

OLIM MARSHALL DILLON 447M

LIM-FLEX(71/63.3) • BULL • SCURRED • HET BLACK (T)
02/15/2024 • OLIM 447M • LFM3136582

CELL ENVISION 7023E
OLIM JACKPOT 209J
CAIT ETERNAL FLAME 700E ET

WULFS COMPLIANT K687C ET
OLIM FALLON 834F
KEVN ZAPATA 212Z

AHCC BARN BURNER B907
PBR5 ZSA ZSA 246Z
PVF INSIGHT 0129
AUTO AMERIE 228A
WULFS WILLARD 5115W
WULFS SOLOIST 6284S
KESSLERS FRONTMAN R001
KEVN UNBREAKABLE 121U

PAP
41

GE-EPDS

	CE	BW	WW	YW	MK	TM	CM	SC	DC	YG	CW	RE	MB	\$TPI
EPDS	7	2.7	84	136	32	75	4	.75	16	-.22	56	1.18	.43	139
%Rank	95	85	10	10	5	3	85	70	10	30	5	3	25	4

Act. BW: 87 • Adj. WW: 732 • Adj. YW: 1257 • UFAT: 0.28 • UREA: 14.90 • UIMF: 2.65

Lot 8 is a son of OLIM Jackpot, the sire of two of the members of our 2024 NWSS Grand Champion Limousin Pen. He charts impressive growth and carcass numbers with both his weaning and yearling values in the top 10% of the breed. With his breed-leading REA, MB and \$TPI, here is a bull that should sire calves that excel in the feedlot and on the rail!



LOT 10

9

OLIM MAPQUEST 472M

LIM-FLEX(74/66.6) • BULL • HET POLLED (T) • HET BLACK (T)
02/21/2024 • OLIM 472M • LFM3136590

WULFS XCELLSIOR X252X
WULFS GAMEBOY C911G ET
MAGS DEALING MAGIC

WULFS ZEKE X235Z
OLIM FRAPPUCCINO 863F
KEVN XPONENT 024X

WULFS SIRLOIN 3172S
WULFS MISSIVE 2258M
MAGS ZODIAC
BDHC TROUBLE 2108Z
WULFS XCLUSIVE 2458X
WULFS MYRLENE 2332M
MYTTY IN FOCUS
KEVN TOMBOY 736T

PAP
35

GE-EPDS

	CE	BW	WW	YW	MK	TM	CM	SC	DC	YG	CW	RE	MB	\$TPI
EPDS	13	2.1	81	123	31	71	7	.45	13	-.34	37	.98	.24	122
%Rank	20	75	15	25	10	10	35	95	50	10	45	10	65	15

Act. BW: 88 • Adj. WW: 719 • Adj. YW: 1307 • UFAT: 0.18 • UREA: 14.12 • UIMF: 2.85

Here is one of only two sons in the sale sired by the breed-leading Wulfs Gameboy bull. Gameboy was not only a high seller in the Wulf Opportunity Sale, but in 2024 he was named the #1 sire across all breeds in Vytelle's Top 150 Proven Sire List for feed efficiency. Mapquest had an actual 88 lb. birthweight, weaned off at 719 lbs. and grew to 1307 lbs. at yearling! His performance places him in the top 15% for WW, the top 25% for YW and the top 10% in REA. Plus, at 35, he has one of the lowest PAP scores in the sale!

10

OLIM MASTERCRAFT 424M

LIM-FLEX(67/59.9) • BULL • HOMO POLLED (T) • HOMO BLACK (T)
02/10/2024 • OLIM 424M • LFM3136577

MAGS CABLE
WULFS HIGH CARD C125H
EF XCLUSIVE

WULFS COMPLIANT K687C ET
OLIM FAIRY GODMOTHER 851F
KEVN BRIANA 428B

MAGS APPLESEED
MAGS ZEQUIN
CFX WILD CARD
VVLC BLACK LUCY 416R
WULFS WILLARD 5115W
WULFS SOLOIST 6284S
S A V BISMARCK 5682
KEVN ZAFARA 211Z

PAP
39

GE-EPDS

	CE	BW	WW	YW	MK	TM	CM	SC	DC	YG	CW	RE	MB	\$TPI
EPDS	11	1.3	74	119	31	68	8	.9	11	-.14	41	.84	.21	103
%Rank	45	60	35	35	10	15	25	45	80	50	35	25	70	45

Act. BW: 85 • Adj. WW: 651 • Adj. YW: 1155 • UFAT: 0.37 • UREA: 14.80 • UIMF: 3.155

Mastercraft is a homozygous black, homozygous polled son of Wulfs High Card. Deep bodied and big hipped, he combines a modest 85 pound birthweight with a balanced set of EPD's charting in the top 35% of the breed or better in WW, YW, MK, TM, CW and REA!



LOT 11

11

OLIM MOUNTAIN MAN 448M

LIM-FLEX(62/55.4) • BULL • HOMO POLLED (T) • HET BLACK (T)
02/03/2024 • OLIM 448M • LFM3136568

MAGS CABLE
OLIM KEYSTONE 23K
OLIM FORTUNA 860F

CONNELLY FINAL PRODUCT
ALYN EMBRACE 713E
KEVN ZANETA 295Z

MAGS APPLESEED
MAGS ZEQUIN
WULFS ALLIED FORCE C303A
CAIT YELLOW ROSE 128Y
CONNELLY PRODUCT 568
EBONISTA OF CONANGA 471
WULFS UPGRADE 0500U
KEVN WHISKEY LULLABY

PAP
35

GE-EPDS

	CE	BW	WW	YW	MK	TM	CM	SC	DC	YG	CW	RE	MB	\$TPI
EPDS	11	1.3	72	107	36	71	9	1.05	18	-.14	17	.45	.22	60
%Rank	45	60	40	60	1	10	15	35	2	50	>95	80	65	>95

Act. BW: 93 • Adj. WW: 747 • Adj. YW: 1361 • UFAT: 0.52 • UREA: 13.26 • UIMF: 1.90

Here's another son of OLIM Keystone. Deep, docile and sound, he posted an adjusted 205 day weight of 725 (ratio of 112) and an adjusted 1361 day weight of 1361 (ratio of 112). His dam is a beautiful uddered Connelly Final Product cow who has weaned 6 calves ratiating 111 for both weaning and yearling growth.

Mountain Man is a long bodied, soggy bull that will add pounds to your calves and dollars to your checking account!

12 OLIM MASTER MIND 459M

LIM-FLEX(73/64.8) • BULL • HOMO POLLED (T) • RED
02/13/2024 • OLIM 459M • LFM3136580

PAP
38

WULFS XCELLSIOR X252X
WULFS GALLAGHER 7056G
WULFS EDWINNA 7056E

ROMN FLOYD MUDHENKEY 101F
OLIM KELSEY 263K
OLIM HOCUS POCUS 93H

WULFS SIRLOIN 3172S
WULFS MISSIVE 2258M
BIEBER DEEP END B597
WULFS CALIBRI 5210C ET
AUTO LUCKY GUY 140D ET
ROMN ARETHA 50A
OLIM ENCORE 782E
KEVN CHANTILLY LACE 507C

CE	BW	WW	YW	MK	TM	CM	SC	DC	YG	CW	RE	MB	\$TPI	
EPDS	16	-7	74	112	29	65	7	.26	16	-1	44	.73	.49	139
%Rank	3	15	35	50	20	25	35	>95	10	60	25	40	20	4

Act. BW: 87 • Adj. WW: 699 • Adj. YW: 1330 • UFAT: 0.19 • UREA: 16.96 • UIMF: 2.48
Herd bull alert! Master Mind is a homozygous polled, red bull that we are super excited about! Sired by the proven calving ease bull Wulfs Gallagher 7056G and out of a first calf heifer, Mastermind charts a 699 pound adj. 205 and a 1330 adj. YW. Long bodied, square hipped, big topped, and sound structured, he combines his 16 CED with a 29 for milk and charts in the top 4% for \$TPI!



LOT 12

13 OLIM MR. HULK 507M

LIM-FLEX(75/67.9) • BULL • HOMO POLLED (T) • RED
02/12/2024 • OLIM 507M • LFM3136578

PAP
39

WULFS HORTON 7358H
WULFS KUT ABOVE 7118K
WULFS ELDERBERRY 7118E ET

WULFS COMPLIANT K687C ET
OLIM FIRST LOVE 869F
KEVN ZAMBIA 232Z

HUNT CREDENTIALS 37C ET
WULFS ENCARNASION 7358E
BIEBER HARD DRIVE Y120
WULFS YOUR CHOICE 1419Y
WULFS WILLARD 5115W
WULFS SOLOIST 6284S
S A V BRILLIANCE 8077
KEVN JOSIE 915J

CE	BW	WW	YW	MK	TM	CM	SC	DC	YG	CW	RE	MB	\$TPI	
EPDS	9	.9	86	132	36	79	4	1.3	18	-.31	68	1.33	.36	171
%Rank	75	50	10	15	1	1	85	15	2	15	1	1	40	1

Act. BW: 89 • Adj. WW: 765 • Adj. YW: 1370 • UFAT: 0.21 • UREA: 19.64 • UIMF: 2.455
Here is the power bull of the sale! He posted the heaviest weaning and yearling weights with an Adj. 205 day weight of 765, an Adj. 365 day weight of 1370 and combines that with a reasonable 89 lb. Act. birthweight! He leads the field with the largest ribeye in the offering with an Adj. 19.64 REA. Sired by the sale topping bull, Wulfs Kut Above 7118K, he's out of one of the most productive red cows in our herd. Her 5 natural calves have ratioed 94 at birth, 104 at weaning and yearling, 115 for REA and 113 for marbling.



LOT 13

14 OLIM MEDICINE MAN 500M

PUREBRED(90/80.2) • BULL • HOMO POLLED (T) • RED
02/12/2024 • OLIM 500M • NPM3136579

PAP
39

WULFS XCELLSIOR X252X
WULFS GAMEBOY C911G ET
MAGS DEALING MAGIC

WULFS XTRACTOR X233X
KEVN COUNTESS 522C
KEVN SATISFACTION 658S

WULFS SIRLOIN 3172S
WULFS MISSIVE 2258M
MAGS ZODIAC
BDHC TROUBLE 2108Z
WULFS TITUS 2149T
WULFS MYRENE 2332M
WULFS NASA 1212N
KEVN PANDORA 405P

CE	BW	WW	YW	MK	TM	CM	SC	DC	YG	CW	RE	MB	\$TPI	
EPDS	10	3.1	83	123	26	68	5	.45	7	-.54	36	1.19	-.01	127
%Rank	50	85	5	10	40	10	65	70	90	20	20	20	55	10

Act. BW: 94 • Adj. WW: 605 • Adj. YW: 1159 • UFAT: 0.14 • UREA: 14.04 • UIMF: 2.075
Add muscle and power to a set of cows with this Wulfs Gameboy son. In addition to Gameboy, he combines Xcellsior and Xtractor – two of the most heavily used and proven red bulls in the Wulf Cattle bull battery. He charts EPD's in the top 5% for WW, top 10% for yearling weight and top 20% for carcass weight, REA and \$TPI. Here's a bull that will make some thick, stout feeder calves!



LOT 14



LOT 15

15 OLIM MAKER'S MARK 445M

PERCENTAGE(78/67.8) • BULL • HOMO POLLED (T) • HOMO BLACK (T)
02/14/2024 • OLIM 445M • NXM3136581

HUNT CREDENTIALS 37C ET
COLE GENESIS 86G
COLE MISS XRATED 354A

HUNT TESTAMENT 40T
JKTW WHISKEY RIVER 985 W
MRL X-RATED 014X
COLE MISS PRODUCTION 874U
AHCC BARN BURNER B907
PBRS ZSA ZSA 246Z
PVF INSIGHT 0129
AUTO AMERIE 228A

CE	BW	WW	YW	MK	TM	CM	SC	DC	YG	CW	RE	MB	\$TPI	
9	1.8	89	141	30	74	7	1.05	8	-.13	56	.96	.47	137	
%Rank	70	70	2	3	10	2	40	25	95	70	5	30	15	4

Act. BW: 94 • Adj. WW: 724 • Adj. YW: 1245 • UFAT: 0.35 • UREA: 13.08 • UIMF: 2.925
Makers Mark is a 78% homozygous black, homozygous polled bull sired by the proven COLE Genesis bull. With genetic values in the top 2% and 3% for weaning and yearling growth respectively, the top 10% for milk and the top 15% for marbling, he should sire calves that wean off heavy and females that go on to make excellent cows. Plus, he should be a good choice for ranchers in the high country with a PAP score of 39.

16 OLIM MARKET MAKER 502M ET

PERCENTAGE(84/74.6) • BULL • HOMO POLLED (T) • HET BLACK (T)
02/07/2024 • OLIM 502M • NXM3310558

HUNT CREDENTIALS 37C ET
COLE GENESIS 86G
COLE MISS XRATED 354A

HUNT TESTAMENT 40T
JKTW WHISKEY RIVER 985 W
MRL X-RATED 014X
COLE MISS PRODUCTION 874U
AHCC BARN BURNER B907
PBRS ZSA ZSA 246Z
WULFS WILLARD 5115W
CAIT ANGEL 302A

CELL ENVISION 7023E
OLIM HATTIE 77H
CAIT EXTRA SPECIAL 710E

CE	BW	WW	YW	MK	TM	CM	SC	DC	YG	CW	RE	MB	\$TPI	
12	2.2	74	116	28	65	8	.97	6	-.25	46	1.16	.38	136	
%Rank	30	80	25	25	20	15	25	35	>95	45	20	15	25	4

Act. BW: 102 • Adj. WW: 649 • Adj. YW: 1140 • UFAT: 0.31 • UREA: 13.84 • UIMF: 2.83
Here's another COLE Genesis son with an incredibly useful set of genetic values. He charts 11 EPD's in the top 25% of the breed! His dam is sired by the performance leading CELL Envision bull and is a maternal sister to Wulfs Gaylord, now at work in the Hunt Limousin program. He is a full brother to Lot 38.

17 OLIM MADAGASCAR 486M

LIM-FLEX(73/65.5) • BULL • HET POLLED (T) • HOMO BLACK (T)
02/08/2024 • OLIM 486M • LFM3136574

ELMW ALFALFA 103B
AHCC EASY RIDER 5594E
AHCC MISS Y AXIS C5594 ET

TMCK ALFALFA 35X
ELMW WAIT-A-BIT 4W
MAGS Y-AXIS
AHCC DAKOTA LUVLY R595
WULFS XCELLSIOR X252X
MAGS DEALING MAGIC
WULFS WARBONNET 6254W
KEVN WILD THANG 919W

WULFS GAMEBOY C911G ET
OLIM KIARA 256K
KEVN ZAPPOS 260Z

CE	BW	WW	YW	MK	TM	CM	SC	DC	YG	CW	RE	MB	\$TPI	
12	3.2	97	153	22	70	9	.48	17	-.17	38	.83	.4	103	
%Rank	30	95	1	2	80	10	15	95	5	40	40	25	30	45

Act. BW: 88 • Adj. WW: 707 • Adj. YW: 1283 • UFAT: 0.20 • UREA: 13.66 • UIMF: 3.365
Don't tell a first calf heifer she can't raise a performance leader! Lot 17's dam, a Wulfs Gameboy daughter, weaned him at an adjusted 707 lbs. and he went on to post a nearly 1300 lbs. yearling weight! Talk about growth and performance! This 73% Lim-Flex ranks in the top 1% in WW, top 2% in YW, top 5% in docility and top 30% in marbling!



LOT 18

18 OLIM MCKINNEY 537M

LIM-FLEX(56/49.8) • BULL • HOMO POLLED (T) • HET BLACK (T)
02/16/2024 • OLIM 537M • LFM3136583

MAGS CABLE
WULFS HIGH CARD C125H
EFXCLUSIVE

MAGS APPESEED
MAGS ZEQUIN
CFLX WILD CARD
VVLC BLACK LUCY 416R
S A V BISMARCK 5682
S A V BLACKCAP MAY 5270
EXLR DAKOTA 353G
KENO JACQUELYN 907J

S A V BRILLIANCE 8077
KEVN YOUNG AT HEART 124Y
KENO NAMESAKE 307N

CE	BW	WW	YW	MK	TM	CM	SC	DC	YG	CW	RE	MB	\$TPI	
8	2.7	71	117	29	65	5	1.35	6	-.23	36	.75	.51	109	
%Rank	85	85	45	35	20	25	70	15	>95	25	50	35	15	35

Act. BW: 89 • Adj. WW: 597 • Adj. YW: 1109 • UFAT: 0.25 • UREA: 13.32 • UIMF: 4.355
Looking to add marbling and maternal power to your cowherd? McKinney scanned a 4.355 IMF, the third highest in the entire sale offering. Plus, his maternal brother was the top scanning IMF bull in last year's sale. Speaking of maternal, Lot 18 was the 12th and final natural calf out of a 14 year-old cow who ranked within the top 20% of the breed for milk and the top 10% for stayability.

19 OLIM MOTOWN 430M

LIM-FLEX(75/65.9) • BULL • HOMO POLLED (P-2) • HOMO BLACK (P-2)
04/04/2024 • OLIM 430M • LFM3136610

WULFS GAMEBOY C911G ET
WULFS JAZI 8402J
WULFS FLORRY 8402F

WULFS XCELLSIOR X252X
MAGS DEALING MAGIC
WULFS ALLSTATE Y503A
WULFS BIG GIRL 4245B
MAGS AVIATOR
CJSL 2090Z
CELL ENVISION 7023E
ALYN EMBRACE 713E

PAP
47

CJSL CREED 5042C

OLIM KINLEY 273K

OLIM HERSHEY KISS 028H

GE-EPDS

	CE	BW	WW	YW	MK	TM	CM	SC	DC	YG	CW	RE	MB	\$TPI
EPDS	16	-1.1	64	97	26	58	10	.54	10	-.21	43	1.07	.3	134
%Rank	3	15	75	80	40	60	5	85	90	30	25	10	50	10

Act. BW: 78 • Adj. WW: 654 • Adj. YW: 1179 • UFAT: 0.31 • UREA: 16.18 • UIMF: 3.145

Motown is the youngest bull in the sale, but don't let that fool you. He is one of the longest spined, best built, most phenotypically attractive bulls in the entire offering! Sired by Wulfs Jazi, a Gameboy son we purchased at the Wulf Opportunity Sale several years ago, and out of a first calf heifer, he should be heifer-safe given his actual birthweight of 78 lbs. and a CED in the top 3%! With calving ease numbers and a pattern like this, this homozygous black, homozygous polled bull is another herd bull in the making!



LOT 19

20 OLIM MATTEO 534M

LIM-FLEX(43/38.1) • BULL • HOMO POLLED (T) • HOMO BLACK (T)
02/03/2024 • OLIM 534M • LFM3203432

KG JUSTIFIED 3023
BOYD JUSTIFICATION
BOYD ABIGALE 9056

CONNEALY JUDGMENT
KG MISS MAGIC 1443
CONNEALY MAINSTAY
BOYD ABIGALE 6079
AUTO LUCKY GUY 140D ET
ROMN ARETHA 50A
COLE CADILLAC 05C
OLIM FAITH 853F

ROMN FLOYD MUDHENKEY 101F

ALYN LOVE 200K

ALYN HOPE 071H

PAP
40

GE-EPDS

	CE	BW	WW	YW	MK	TM	CM	SC	DC	YG	CW	RE	MB	\$TPI
EPDS	15	-1.8	72	113	23	58	8		16	-.23	31	1.01	.4	101
%Rank	5	10	40	45	70	60	25	-	10	25	65	10	30	50

Act. BW: 85 • Adj. WW: 599 • Adj. YW: 1213 • UFAT: 0.31 • UREA: 17.26 • UIMF: 3.305

If you've kept back a pen full of replacements, Lot 20 is a bull to strongly consider! Sired by Boyd Justification who has a CED in the top 3% of the Angus breed and a BW EPD in the top 10% of the breed, Matteo is out of a first calf heifer himself and boasts a CED of 15 and a -1.8 BW EPD. Homozygous black and homozygous polled, he'll also improve your carcass cutout with an adjusted REA of 17.26 and an adjusted IMF of 3.3.

21 OLIM MATRIX 483M

LIM-FLEX(57/51.5) • BULL • HOMO POLLED (P-2) • HOMO BLACK (P-1)
02/01/2024 • OLIM 483M • LFM3136565

MAGS CABLE
OLIM KINGSMAN 21K B2F
OLIM FLICKA 837F

MAGS APPESEED
MAGS ZEQUIN
WULFS COOLEY 3710C B2F
CAIT CALIFORNIA GIRL 501C

PAP
42

GE-EPDS

	CE	BW	WW	YW	MK	TM	CM	SC	DC	YG	CW	RE	MB	\$TPI
EPDS	12	.5	70	108	28	63	7	1	16	-.08	34	.7	.5	103
%Rank	30	40	50	60	25	35	35	35	10	65	55	40	15	45

Act. BW: 87 • Adj. WW: 617 • Adj. YW: 1138 • UFAT: 0.31 • UREA: 12.12 • UIMF: 2.73

Lot 21 is another homozygous black, homozygous polled bull that has a balanced set of EPD's. Here's a long bodied, sound structured bull that will add both milk and marbling with a maternal EPD in the top 25% of the breed and a marbling EPD in the top 15% of the breed!

22 OLIM MASTER PLAN 450M

LIM-FLEX(39/34.8) • BULL • HOMO POLLED (P-1) • HOMO BLACK (P-1)
02/07/2024 • OLIM 450M • LFM3136572

DEBV GLADIATOR 917G
DLTM JOUSTER 107J
SJH FRONTIER GAL 8707

CELL ENVISION 7023E
DEBV COPPER PENNY
S&R ROUNDTABLE J328
EXAR FRONTIER GAL 9633
DAMERON FIRST CLASS
EXAR PRINCESS 2006
CFLX WILD CARD
VVLC BLACK LUCY 416R

EXAR CLASSEN 1422B

ALYN SOMETHING ROYAL 540C ET

EF XCLUSIVE

PAP
49

GE-EPDS

	CE	BW	WW	YW	MK	TM	CM	SC	DC	YG	CW	RE	MB	\$TPI
EPDS	11	-.7	67	101	28	63	9	1	15	-.01	26	.48	.32	74
%Rank	45	15	60	75	25	35	15	35	20	85	85	75	45	95

Act. BW: 83 • Adj. WW: 629 • Adj. YW: 1154 • UFAT: 0.25 • UREA: 14.94 • UIMF: 3.52

A paternal brother to the Lot 6 bull, here is another Joustier son out of a broody EXAR Classen daughter. His grand dam, EF Xclusive was the Supreme Champion Female at the 2013 Nebraska State and is also the dam of Wulfs High Card, a sire of several lots in this year's sale. Homozygous black and homozygous polled, he offers lots of stretch, length and muscle expression in a moderate birthweight package.

23 OLIM MR. WONDERFUL 462M

LIM-FLEX(52/45.9) • BULL • HOMO POLLED (T) • HET BLACK (T)
04/01/2024 • OLIM 462M • LFM3203437

MAGS FEDERAL RESERVE ET
MAGS KOOPER RUSH 2622K ET
MAGS DARE TO LOVE ME ET

MAGS CABLE
CJSL 4357B ET
MAGS WINSTON
MAGS XTRA REST
S A V RESOURCE 1441
LVLS 9066U
CONNEALY CONSENSUS 7229
KEVN UNRELENTLESS 815U

PAP
38

GE-EPDS

	CE	BW	WW	YW	MK	TM	CM	SC	DC	YG	CW	RE	MB	\$TPI
EPDS	12	.2	74	119	22	59	9	1.02	20	.02	46	.43	.59	100
%Rank	30	30	35	35	80	55	15	35	1	90	20	85	10	30

Act. BW: 75 • Adj. WW: 612 • Adj. YW: 1141 • UFAT: 0.48 • UREA: 10.12 • UIMF: 4.42

Here's another good choice for heifers and the second highest IMF scanning bull in the sale. Lot 23 came into the world with an actual 75 pound birthweight and features a 12 CED, but he certainly has more to offer than just calving ease. Take a look at his growth projections that place him in the top 35% of the breed and his maternal EPD that ranks him in the top 25% of the breed! His dam is one of the easiest fleshing nicest uddered cows in the herd as well.



LOT 24

24 OLIM MONT BLANC 416M

LIM-FLEX(67/60.1) • BULL • HOMO POLLED (T) • HET BLACK (T)
03/26/2024 • OLIM 416M • LFM3203435

MAGS FEDERAL RESERVE ET
MAGS KOOPER RUSH 2622K ET
MAGS DARE TO LOVE ME ET

MAGS AVIATOR
OLIM FAITH 853F
KEVN WHISKEY LULLABY

MAGS CABLE
CJSL 4357B ET
MAGS WINSTON
MAGS XTRA REST
MAGS WINSTON
MAGS XTRA REST
RGMA NIGHT RIDER 73N
KEVN SENTIMENTAL 620S

PAP 36

GE-EPDs

	CE	BW	WW	YW	MK	TM	CM	SC	DC	YG	CW	RE	MB	\$TPI
EPDs	8	4.2	76	120	26	64	6	.35	20	-.23	42	1.01	.31	110
%Rank	85	>95	30	30	40	30	55	95	1	25	30	10	50	35

Act. BW: 99 • Adj. WW: 650 • Adj. YW: 1260 • UFAT: 0.51 • UREA: 14.70 • UIMF: 3.73
Mont Blanc is a paternal brother to Lot 1, sired by our herd sire MAGS Kooper Rush 2622K and out of a heifer Ashlyn successfully campaigned. He is not only a performance leader with weaning and yearling growth in the top 30th percentile, he is also a phenotypic standout! Lot 24 is a long necked, long spined, bull that is soft and sound in his makeup.

25 OLIM MASTERMIND 468M

LIM-FLEX(65/57.6) • BULL • HOMO POLLED (P-1) • HOMO BLACK (P-2)
02/21/2024 • OLIM 468M • LFM3136591

MAGS CABLE
WULFS HIGH CARD C125H
EF XCLUSIVE

MAGS APPELSEED
MAGS ZEQUIN
CFLX WILD CARD
VVLC BLACK LUCY 416R
AHCC BARN BURNER B907
PBR5 ZSA ZSA 246Z
CONNELLY FINAL PRODUCT
KEVN ZANETA 295Z

CELL ENVISION 7023E
OLIM HERSHEY KISS 028H
ALYN EMBRACE 713E

PAP 39

GE-EPDs

	CE	BW	WW	YW	MK	TM	CM	SC	DC	YG	CW	RE	MB	\$TPI
EPDs	10	2.6	77	130	32	70	7	1.68	20	-.24	35	.82	.1	88
%Rank	60	85	25	15	5	10	35	3	1	25	50	25	90	75

Act. BW: 75 • Adj. WW: 664 • Adj. YW: 1223 • UFAT: 0.29 • UREA: 16.02 • UIMF: 2.52
This homozygous black, homozygous polled bull packs a lot of power and punch in a moderate frame. A grandson of both MAGS Cable and CELL Envision, he features two proven performance leaders in his pedigree. While he charts a yearling EPD and REA EPD in the top 15% of the breed, he entered the world in a moderate 75-pound package! Bid with confidence on this moderate framed complete bull!

26 OLIM MIRIMAR 422M

LIM-FLEX(65/58.8) • BULL • HOMO POLLED (T) • HOMO BLACK (T)
03/14/2024 • OLIM 422M • LFM3136605

MAGS CABLE
OLIM KINGSMAN 21K B2F
OLIM FLICKA 837F

MAGS APPELSEED
MAGS ZEQUIN
WULFS COOLEY 3710C B2F
CAIT CALIFORNIA GIRL 501C
WULFS WILLARD 5115W
WULFS SOLOIST 6284S
EXAR UPSHOT 0562B
KEVN UNOPENED LETTER 106U

WULFS COMPLIANT K687C ET
OLIM FEDORA 833F
CAIT ANGEL EYES 330A

PAP 36

GE-EPDs

	CE	BW	WW	YW	MK	TM	CM	SC	DC	YG	CW	RE	MB	\$TPI
EPDs	13	3.2	76	114	32	70	10	.7	7	-.3	27	.89	.26	94
%Rank	20	95	30	45	5	10	5	70	>95	15	80	20	60	65

Act. BW: 86 • Adj. WW: 612 • Adj. YW: 1124 • UFAT: 0.42 • UREA: 14.86 • UIMF: 2.43
Here's another Kingsman son out of a highly productive Wulfs Compliant daughter. This homozygous black, homozygous polled bull is a moderate framed, long bodied, easy fleshing bull that exhibits great muscle shape and continues to get better every day of his life!

27 OLIM MARLBORO MAN 464M

LIM-FLEX(75/67) • BULL • HOMO POLLED (T) • BLACK
02/05/2024 • OLIM 464M • LFM3136569

WULFS ENVOY K116E
WULFS HOLLIDAY 4841H
WULFS BESAME MUCHO 4841B

BIEBER HARD DRIVE Y120
WULFS YOUR CHOICE 1419Y
WULFS XTRACTOR X233X
WULFS YET IT'S TRUE 1401Y
WULFS REVOLVER 1219R
WULFS REMI 5115R
S A V BRILLIANCE 8077
MAGS MANUELA

WULFS WILLARD 5115W
OLIM ENCHANTRESS 735E
AUTO TRADITION 248Z

PAP 37

GE-EPDs

	CE	BW	WW	YW	MK	TM	CM	SC	DC	YG	CW	RE	MB	\$TPI
EPDs	17	-1.6	72	102	29	65	8	.5	16	-.39	20	1.09	.23	99
%Rank	2	10	40	70	20	25	25	85	10	4	95	5	65	55

Act. BW: 71 • Adj. WW: 734 • Adj. YW: 1191 • UFAT: 0.23 • UREA: 15.20 • UIMF: 2.28
Lot 27 is a stout, black power bull! Sired by the top selling Wulfs Holliday and out of a Wulfs Willard cow, you'll love the muscularity, thickness and length of body this bull offers. He boasts a 17 CED and an actual 71 pound birthweight, and combines that with an REA EPD in the top 5% of the breed.

28 OLIM MANDAN 518M

LIM-FLEX(71/64.1) • BULL • HOMO POLLED (T) • BLACK
02/16/2024 • OLIM 518M • LFM3136584

MAGS CABLE
OLIM KINGSMAN 21K B2F
OLIM FLICKA 837F

MAGS APPELSEED
MAGS ZEQUIN
WULFS COOLEY 3710C B2F
CAIT CALIFORNIA GIRL 501C
WULFS EDGE 5045E
TECS ALTERNATIVE 1315
WULFS XTRACTOR X233X
KEVN TROPICAL STORM 718T

WULFS GARFIELD T937G
OLIM JULIANNA 108J
KEVN APRICOT 346A

PAP 38

GE-EPDs

	CE	BW	WW	YW	MK	TM	CM	SC	DC	YG	CW	RE	MB	\$TPI
EPDs	12	.6	69	105	28	63	8	.92	8	-.24	28	.65	.46	103
%Rank	30	40	55	65	25	35	25	45	>95	25	75	50	20	45

Act. BW: 89 • Adj. WW: 625 • Adj. YW: 1175 • UFAT: 0.32 • UREA: 12.22 • UIMF: 3.585
Complete, balanced, soft-made and sound are four words to describe Lot 28. Another homozygous polled son of OLIM Kingsman, here is a bull that not only offers a double digit CED, but also charts in the top 20th percentile for marbling.

29 OLIM MOONSHOT 436M

LIM-FLEX(64/58.5) • BULL • HOMO POLLED (P-3) • RED
02/12/2024 • OLIM 436M • LFM3203433

PAP 38	MAGS FEDERAL RESERVE ET MAGS KOOPER RUSH 2622K ET MAGS DARE TO LOVE ME ET	MAGS CABLE CJSL 4357B ET MAGS WINSTON MAGS XTRA REST WULFS REVOLVER 1219R WULFS REMI 5115R EXAR UPSHOT 0562B KEVN UNOPENED LETTER 106U
	WULFS WILLARD 5115W CAIT EXTRA SPECIAL 710E CAIT ANGEL 302A	

CE	BW	WW	YW	MK	TM	CM	SC	DC	YG	CW	RE	MB	\$TPI	
EPDS	11	5.1	88	132	25	69	7	.65	11	-.15	55	.93	.64	150
%Rank	45	>95	5	15	50	15	35	80	80	45	10	15	5	2

Act. BW: 89 • Adj. WW: 735 • Adj. YW: 1349 • UFAT: 0.28 • UREA: 12.74 • UIMF: 2.905
Performance is this bull's middle name! Here is another son of MAGS Kooper Rush out of the dam of the top selling Wulfs Gaylord. Weaning off with a 735 pound adjusted 205 day weight and posting a 1349 pound adjusted yearling weight, this bull will add pounds and performance to any calf crop. He couples that with marbling and ribeye EPD's in the top 5 and 15 percent of the breed, respectively.

30 OLIM MASTER SARGEANT 400M

LIM-FLEX(73/64.4) • BULL • HOMO POLLED (T) • RED
02/08/2024 • OLIM 400M • LFM3136575

PAP 39	MAGS CABLE OLIM KEYSTONE 23K OLIM FORTUNA 860F	MAGS APPLESEED MAGS ZEQUIN WULFS ALLIED FORCE C303A CAIT YELLOW ROSE 128Y WULFS ENVOY K116E WULFS BESAME MUCHO 4841B WZRK ATLAS 8012A KEVN RUNAWAY BRIDE 534R
	WULFS HOLLIDAY 4841H OLIM KIERRA 271K OLIM FIGURE SKATER 872F	

CE	BW	WW	YW	MK	TM	CM	SC	DC	YG	CW	RE	MB	\$TPI	
EPDS	15	1.5	78	116	30	69	9	.79	19	-.26	46	.93	.22	129
%Rank	5	65	20	40	15	15	15	70	1	20	20	15	65	10

Act. BW: 72 • Adj. WW: 645 • Adj. YW: 1157 • UFAT: 0.24 • UREA: 12.96 • UIMF: 3.305
Here is another OLIM Keystone son. The spread between his 72 pound actual birthweight and 645 pound adjusted 205 day weight is impressive—especially given the fact that he was out of a first calf heifer. Based on his genetic values, he should also add milk and docility to your cowherd. Plus, with a 39 PAP, he should definitely perform at higher elevations!

31 OLIM MANHATTEN 494M

PUREBRED(87/76.4) • BULL • HET POLLED (T) • RED
02/18/2024 • OLIM 494M • NPM3136585

PAP 36	WULFS GALLAGHER 7056G WZRK KALUA 0033K WZRK 0033H	WULFS XCELLSIOR X252X WULFS EDWINNA 7056E HUNT CREDENTIALS 37C ET WZRK DOWN UNDER 6055D WULFS ENVOY K116E WULFS BESAME MUCHO 4841B WULFS ZEKE X235Z KEVN YESTERDAY'S DREAM
	WULFS HOLLIDAY 4841H OLIM KALLIE 204K OLIM DELIGHTFUL 614D	

CE	BW	WW	YW	MK	TM	CM	SC	DC	YG	CW	RE	MB	\$TPI	
EPDS	14	-3	57	80	28	57	8	.6	17	-.1	30	.34	.58	118
%Rank	15	2	80	85	25	55	20	45	5	>95	35	>95	1	20

Act. BW: 76 • Adj. WW: 586 • Adj. YW: 1090 • UFAT: 0.33 • UREA: 11.56 • UIMF: 3.175
This bull is genetically designed as a sleep-all-night heifer bull. He boasts a 76 pound actual birthweight, a -3 BW EPD and a double-digit CED of 14! His dam is an ultra-feminine, square uddered female who bred back quickly and trimmed 6 days off of her calving interval as a three year old. Here is another good candidate for higher elevations given his PAP score of 36.

32 OLIM MANDALAY 428M

LIM-FLEX(67/60.7) • BULL • HOMO POLLED (T) • BLACK
02/19/2024 • OLIM 428M • LFM3136588

PAP 34	WULFS XCELLSIOR X252X WULFS GALLAGHER 7056G WULFS EDWINNA 7056E	WULFS SIRLOIN 3172S WULFS MISSIVE 2258M BIEBER DEEP END B597 WULFS CALIBRI 5210C ET MAGS APPLESEED MAGS ZEQUIN WULFS COMPLIANT K687C ET KEVN BRIANA 428B
	MAGS CABLE OLIM KIMBERLEE 244K OLIM FAIRY GODMOTHER 851F	

CE	BW	WW	YW	MK	TM	CM	SC	DC	YG	CW	RE	MB	\$TPI	
EPDS	15	-1.2	75	113	31	68	9	.57	14	-.13	38	.69	.48	119
%Rank	5	10	30	45	10	15	15	85	35	50	40	45	20	20

Act. BW: 84 • Adj. WW: 651 • Adj. YW: 1189 • UFAT: 0.21 • UREA: 11.68 • UIMF: 3.45
Lot 32 is another calving ease prospect ready to head to the high country! Sired by the proven heifer bull Wulfs Gallagher, who himself has a CED of 20 and a BW EPD of -5.2, here is a bull out of a first calf heifer that should be safe to use on heifers while still giving you the weaning performance you demand. Plus, he was the lowest PAP scoring bull in the entire offering!

LIMOUSIN LEADS THE WAY IN FEED EFFICIENCY!



The Vytelle Network is an international group of breeders who phenotype their animals and share pedigree information into the Vytelle database. In collaboration with 38 performance focused breeders who are part of the Vytelle network, the company curate's the world's largest multi-breed efficiency database. Each year, this Top 150 Proven Bulls list showcases the cream of the crop among more than 324,763 animals spanning 29 diverse breeds.

- The bulls featured in the Top 150 Proven Bulls list meet stringent criteria, including:
- A minimum three-generation pedigree
 - RFI EPD accuracy of 0.6 or higher
 - Testing and report in via Vytelle's innovative Vytelle Sense System

In addition to the Limousin breed having 19 of the Top 150 Proven Bulls, the #1 bull among all breeds in the Top 150 Proven Bulls was Wulfs Gameboy C911G ET

Wulfs Gameboy was bred by Ochsner Limousin and is owned by Wulf Cattle and Bues Cattle Company. Lots 9, 14, 50 are sired by Gameboy. Lots 36, 37 and 41 are out of CNOC Gemini—our donor who is a maternal half-sister to Gameboy.

33

OLIM MALACHI 443M

LIM-FLEX(57/50.7) • BULL • HOMO POLLED (T) • BLACK
02/02/2024 • OLIM 443M • LFM3136567

WULFS XCELLSIOR X252X
WULFS GALLAGHER 7056G
WULFS EDWINNA 7056E

WULFS SIRLOIN 3172S
WULFS MISSIVE 2258M
BIEBER DEEP END B597
WULFS CALIBRI 5210C ET

PAP
37

SITZ BARRICADE 632F

OLIM KELANI 279K

ALYN DREAM ON 658D

SITZ STELLAR 726D
SITZ BARBARAMERE NELL 765D
MAGS AVIATOR
EF YING YANG 662Y

GE-EPDs

	CE	BW	WW	YW	MK	TM	CM	SC	DC	YG	CW	RE	MB	\$TPI
EPDS	15	-4.6	50	73	24	49	6	18	.1	7	-.01	.7	66	
%Rank	5	1	>95	>95	60	>95	55	-	2	>95	>95	>95	3	>95

Act. BW: 62 • Adj. WW: 564 • Adj. YW: 1093 • UFAT: 0.38 • UREA: 13.34 • UIMF: 3.095

Here is another Gallagher son specifically engineered to use on a set of replacement females. He has the lightest actual birthweight in the entire sale and is out of a beautiful uddered, easy fleshing Sitz Barricade first calf-heifer we are really excited about.



OLIM KINGSMAN 21K B2F • Sire of Lot 35

34

OLIM MR. NEAT 427M

LIM-FLEX(70/61.5) • BULL • HOMO POLLED (T) • HET BLACK (T)
03/25/2024 • OLIM 427M • LFM3203434

MAGS FEDERAL RESERVE ET
MAGS KOOPER RUSH 2622K ET
MAGS DARE TO LOVE ME ET

MAGS CABLE
CJSL 4357B ET
MAGS WINSTON
MAGS XTRA REST
LH U HAUL 135U
KRVN SPRITZER 243S
WULFS XCELLSIOR X252X
ALYN ZIPPITY DO DAH 214Z

PAP
39

KEVN CRIMSON TIDE ET

ALYN FANDANGO 830F

ALYN CAROLINE 526C

GE-EPDs

	CE	BW	WW	YW	MK	TM	CM	SC	DC	YG	CW	RE	MB	\$TPI
EPDS	10	-1	62	99	21	52	5	.47	21	-1	32	.49	.22	90
%Rank	60	25	80	75	85	90	70	95	1	60	65	75	65	75

Act. BW: 89 • Adj. WW: 609 • Adj. YW: 1193 • UFAT: 0.32 • UREA: 14.78 • UIMF: 3.235

Lot 34 is another son of MAGS Kooper Rush that has style and balance to burn. This long necked, sound structured, nice profiling bull is one of the nicest balanced, best patterned bulls in the entire sale!

35

OLIM MONOPOLY 517M

LIM-FLEX(61/55) • BULL • SCURRED • HOMO BLACK (P-3)
04/09/2024 • OLIM 517M • LFM3136611

MAGS CABLE
OLIM KINGSMAN 21K B2F
OLIM FLICKA 837F

MAGS APPLESEED
MAGS ZEQUIN
WULFS COOLEY 3710C B2F
CAIT CALIFORNIA GIRL 501C
MAGS WINSTON
MAGS XTRA REST
DHVO DEUCE 132R
MAGS UZIEL

PAP
38

MAGS AVIATOR

OLIM GENIE 980G

MAGS ZIEL

GE-EPDs

	CE	BW	WW	YW	MK	TM	CM	SC	DC	YG	CW	RE	MB	\$TPI
EPDS	19	-2.1	57	89	28	57	12	.65	7	-1	12	.26	.48	74
%Rank	1	4	95	95	25	70	1	80	>95	60	>95	95	20	95

Act. BW: 66 • Adj. WW: 593 • Adj. YW: 1135 • UFAT: 0.41 • UREA: 12.48 • UIMF: 3.16

Here is another calving ease option that will improve both milk and marbling! With an actual 66 pound birthweight and a 19 CED, Monopoly has the highest CED EPD in the entire sale! If you appreciate moderate framed, sound structured, thick made, nice patterned cattle, don't "pass go" until you check out Monopoly!

TPI NALF'S NEW TERMINAL PROFIT INDEX

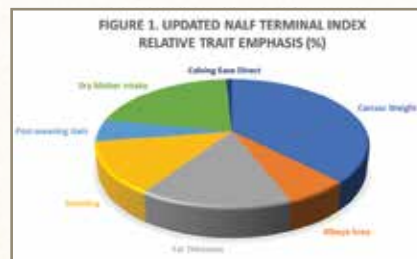
The new Terminal Profit Index (TPI) has been constructed to identify sires that produce the highest profit potential for fed cattle utilizing traits that directly impact feeding performance and superior carcass traits. The new index was created by iGENDEC using the most recent 10 years of USDA reported fed cattle and grid pricing data, K-State reported feedlot cattle performance and NALF data. The new TPI index models the use of Limousin sires on Angus based cows with all calves marketed on a value-based carcass grid. The units reported represent expected differences in profit per mating.

The following EPD traits are included in TPI and their corresponding Marginal Economic values used in the Terminal Profit Index. **HCW \$1.608, REA \$23.36, FAT \$162.185, MS \$43.01, DMI -\$20.856, CE \$9.957, PWG SPREAD \$277.**

The marginal values which are determined by parameters in the iGENDEC program and simply multiplied by each EPD trait and then

added up for a total \$ index value on each animal in the herd book. The range seen on NALF's 4500 active sires reflects a high of \$210.00 and a low of -\$16.00 with a mean of \$94.00.

It is important to remember that the Terminal Profit Index is specifically designed for terminal sires that excel in feeding performance, carcass characteristics on an economic relevant basis. It utilizes actual historical price data and is much more reflective of today's fed cattle market and feeding performance requirements in the fed cattle industry.



Relative Trait Emphasis of Traits Used in TPI Index



LOT 36



CNOC GEMINI 90G • Dam of Lots 36, 37 & 41



OLIM KOLT 45 • Maternal brother to Lots 36 & 37



LOT 37

36 OLIM LINCOLN 03L ET

LIM-FLEX(62/55) • BULL • HOMO POLLED (P-2) • HOMO BLACK (P-3)
09/11/2023 • OLIM 03L • LFM3156077

MAGS CABLE
MAGS FEDERAL RESERVE ET
CJSL 4357B ET

CELL ENVISION 7023E

CNOC GEMINI 90G
MAGS DEALING MAGIC

MAGS APPLESEED
MAGS ZEQUIN
S A V HESSTON 2217
AHCC XHIBIT THIS X045
AHCC BARN BURNER B907
PBRS ZSA ZSA 246Z
MAGS ZODIAC
BDHC TROUBLE 2108Z

PAP
39

GE-EPDs

	CE	BW	WW	YW	MK	TM	CM	SC	DC	YG	CW	RE	MB	\$TPI
EPDS	12	-3	68	110	28	62	10	1.4	15	.04	42	.48	.5	103
%Rank	30	25	60	55	25	40	5	10	20	95	30	75	15	45

Act. BW: 74 • Adj. WW: 628 • Adj. YW: 1033 • UFAT: 0.27 • UREA: 11.94 • UIMF: 1.885

This pair of full brothers are maternal siblings to KOLT 45, the high selling bull in our 2024 sale, now working for Lawrence Family Limousin in Anton, TX. Their dam is the Gemini cow who is quickly making a name for herself as a cornerstone donor in our program.

OLIM Lincoln is homozygous both ways and offers an actual 74 pound birthweight and a double digit CED of 12. This nice patterned, long necked, smooth shouldered bull should work well on heifers. Plus, with a marbling EPD in the top 15% of the breed, his calves should garner quality premiums. For insight into what his daughters may look like, check out his full sister Lot 41 and the picture of his other full sister, OLIM Lady in Waiting 04L.

37 OLIM LAST CALL 08L ET

LIM-FLEX(62/55) • BULL • HOMO POLLED (P-2) • HOMO BLACK (P-3)
09/15/2023 • OLIM 08L • LFM3156078

MAGS CABLE
MAGS FEDERAL RESERVE ET
CJSL 4357B ET

CELL ENVISION 7023E

CNOC GEMINI 90G
MAGS DEALING MAGIC

MAGS APPLESEED
MAGS ZEQUIN
S A V HESSTON 2217
AHCC XHIBIT THIS X045
AHCC BARN BURNER B907
PBRS ZSA ZSA 246Z
MAGS ZODIAC
BDHC TROUBLE 2108Z

PAP
40

GE-EPDs

	CE	BW	WW	YW	MK	TM	CM	SC	DC	YG	CW	RE	MB	\$TPI
EPDS	12	4.3	83	129	28	69	10	1.4	16	-.01	41	.73	.6	101
%Rank	30	>95	10	15	25	15	5	10	10	85	35	40	10	50

Act. BW: 94 • Adj. WW: 684 • Adj. YW: 1162 • UFAT: 0.32 • UREA: 14.82 • UIMF: 2.395

OLIM Last Call, boasts WW and marbling EPD's in the top 10% of the breed, and a yearling weight EPD in the top 15% of the breed! Plus, he's backed by a great dam who is sired by the performance leading CELL Envision bull and is also a maternal half sister to the industry leader in feed efficiency, Wulfs Gameboy!! Thick, deep, stout and soggy, he'll make feeder calves that ring the bell sale day!

Fall Yearling Bulls

38 OLIM LANDER 02L ET
 PERCENTAGE(84/74.6) • BULL • HOMO POLLED (T) • HOMO BLACK (T)
 09/12/2023 • OLIM 02L • NXM3310557

HUNT CREDENTIALS 37C ET
COLE GENESIS 86G
 COLE MISS XRATED 354A
 CELL ENVISION 7023E
OLIM HATTIE 77H
 CAIT EXTRA SPECIAL 710E

HUNT TESTAMENT 40T
 JKTW WHISKEY RIVER 985 W
 MRL X-RATED 014X
 COLE MISS PRODUCTION 874U
 AHCC BARN BURNER B907
 PBRS ZSA ZSA 246Z
 WULFS WILLARD 5115W
 CAIT ANGEL 302A

PAP
40

GE-EPDS

CE	BW	WW	YW	MK	TM	CM	SC	DC	YG	CW	RE	MB	\$TPI
EPDS 11	1.9	83	132	28	69	7	.97	8	-.12	50	.88	.35	132
%Rank 45	75	10	10	20	10	40	35	95	70	10	40	30	10

Act. BW: 89 • Adj. WW: 625 • Adj. YW: 1195 • UFAT: 0.19 • UREA: 15.16 • UIMF: 1.88

Here's a cowboy's bull ready to cover some cows and cover some country! Long bodied, thick made and rugged, this 18 month-old bull is top of his class in a number of traits. In fact, he charts in the top 10 percent in WW, YW, TM CW and \$TPI. His full brother sells as Lot 16.

39 OLIM LEAD GUITAR 07L
 PUREBRED(87/78) • BULL • HOMO POLLED (P-1) • RED
 09/05/2023 • OLIM 07L • NPM3133663

WULFS XCELLSIOR X252X
WULFS GALLAGHER 7056G
 WULFS EDWINNA 7056E
 LFLC BANK ACCOUNT 701B
BOSS LAKE MS MOLLY 160J ET
 BOSS LAKE MS MOLLY 814F ET

WULFS SIRLOIN 3172S
 WULFS MISSIVE 2258M
 BIEBER DEEP END B597
 WULFS CALIBRI 5210C ET
 WULFS ZIPLOCK N922Z
 LFLC 701X XTRA GOOD
 COTTAGE LAKE BORDER AGENT
 AUTO OLGA 498A

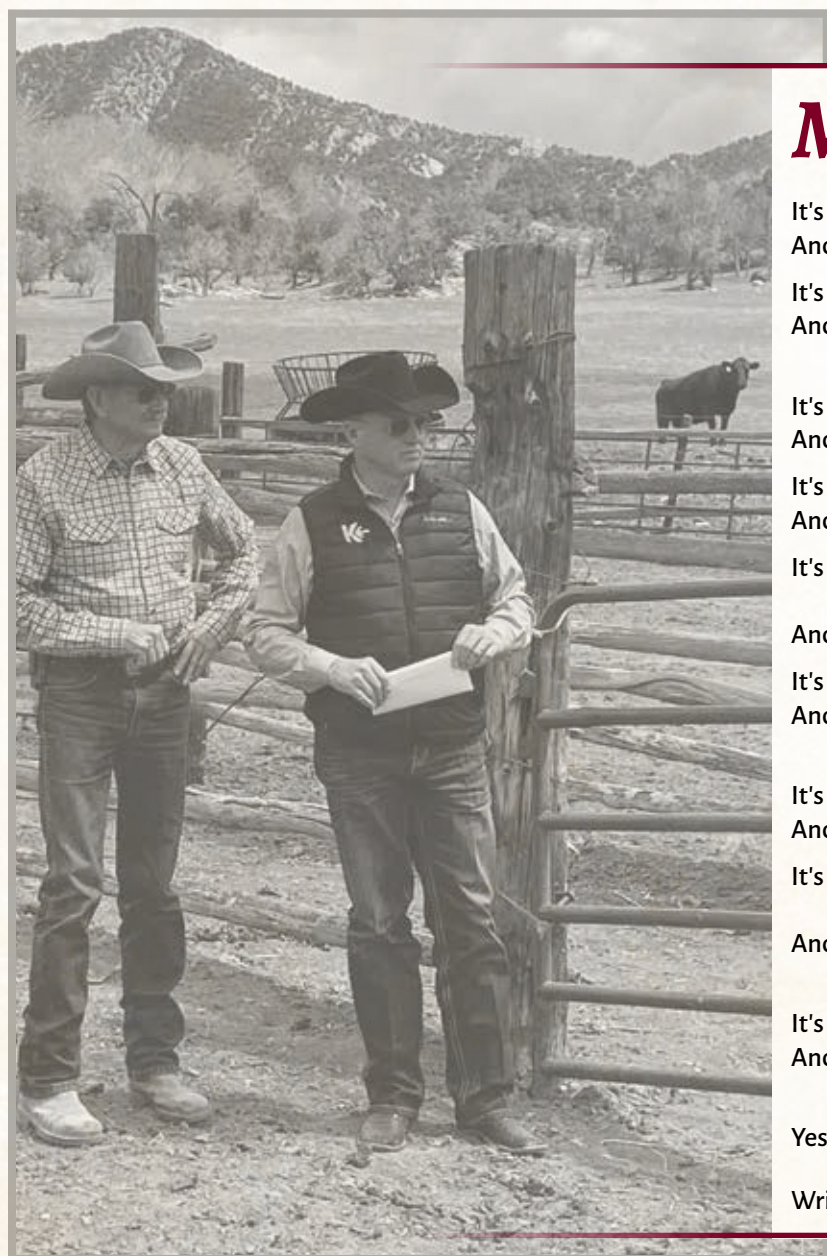
PAP
39

GE-EPDS

CE	BW	WW	YW	MK	TM	CM	SC	DC	YG	CW	RE	MB	\$TPI
EPDS 18	-2.3	60	79	28	58	9	.29	16	-.17	10	.41	.11	70
%Rank 1	4	70	85	25	50	10	90	10	>95	90	>95	25	95

Act. BW: 67 • Adj. WW: 552 • Adj. YW: 980 • UFAT: 0.16 • UREA: 11.82 • UIMF: 1.455

Here is the only red, purebred Limousin heifer bull we have to offer this year. OLIM Lead Guitar is the first calf out of Ashlyn's heifer that earned her way into the top five purebred females at the 2022 National Junior Limousin Heifer Show. Sired by the proven Wulfs Gallagher, here is a structurally correct, nice patterned bull with a 67 pound actual birthweight and a CED EPD in the top 1% of the breed!



More Than Cattle

It's about a dream that began with a catch-it-calf
 And a passion that extends beyond profits

It's about a late-night "date" in the calving barn with your wife
 And about an early morning sunrise painted above the bluffs
 in the eastern sky

It's about the sound of bawling calves at weaning time
 And about the still morning silence after a winter snow

It's about the smell of freshly cut hay on a hot summer day
 And about the aroma of a prime rib roast on New Years

It's about the confidence that comes when kids connect
 with critters
 And the humbleness you feel when you're dancing with nature

It's about the promise and hope that each new calf crop brings,
 And about experiences you have as a family that can't be
 replaced by "things"

It's about bright eyes and blue ribbons at the County Fair
 And about the sweat and the discipline it takes to get there

It's about friends who are your customers and customers who
 become friends
 And about an eternal relationship with our Creator that has
 no end

It's about the lessons we learn, as painful as some seem
 And about the love of a family who share not just a name,
 but a dream

Yes, at Ochsner Limousin, it's about more than just cattle!

Written By: Kevin Ochsner, February 2004

Yearling Open Heifers



LOT 40



OLIM KINGSMAN 21K B2F • Sire of Lot 40



OLIM LADY IN WAITING 04L • Sister to Lot 41



LOT 41

40 OLIM MADONNA 512M

PERCENTAGE(78/67.6) • COW • HOMO POLLED (T) • HOMO BLACK (T)
02/27/2024 • OLIM 512M • NXF3312671

MAGS CABLE
OLIM KINGSMAN 21K B2F
OLIM FLICKA 837F

WULFS COMPLIANT K687C ET
OLIM HEARTBREAKER 073H
KEVN ANASTASIA 307A

MAGS APPLESEED
MAGS ZEQUIN
WULFS COOLEY 3710C B2F
CAIT CALIFORNIA GIRL 501C
WULFS WILLARD 5115W
WULFS SOLOIST 6284S
WULFS US ARMY GENERAL5093
KEVN YESTERDAY'S DREAM

PAP
40

GE-EPDs

	CE	BW	WW	YW	MK	TM	CM	SC	DC	YG	CW	RE	MB	\$TPI
EPDS	15	.3	63	96	29	60	10	.28	2	-.33	34	1.01	.25	113
%Rank	10	40	60	60	15	40	4	95	>95	35	50	25	45	25

Act. BW: 73 • Adj. WW: 552 • Adj. YW: 823 • UFAT: 0.19 • UREA: 9.74 • UIMF: 4.235

We sure like what we're seeing in the OLIM Kingsman calves, and Madonna is one of the reasons why! This feminine, angular and attractive female is bold sprung and exhibits the deep, sweeping rib shape of a genuine brood cow!! Homozygous black and homozygous polled she is one purebred bull away from producing a sale topping purebred show heifer, or a calving ease black purebred bull! Did we mention she scanned with the second highest IMF in the entire heifer sale offering? Here is a brood matron in the making!

41 CNOC MADE YOU LOOK 435M ET

LIM-FLEX(62/55) • COW • HOMO POLLED (P-2) • HOMO BLACK (P-3)
01/30/2024 • CNOC 435M • LFF3348784

MAGS CABLE
MAGS FEDERAL RESERVE ET
CJSL 4357B ET

CELL ENVISION 7023E
CNOC GEMINI 90G
MAGS DEALING MAGIC

MAGS APPLESEED
MAGS ZEQUIN
S A V HESSTON 2217
AHCC XHIBIT THIS X045
AHCC BARN BURNER B907
PBRS ZSA ZSA 246Z
MAGS ZODIAC
BDHC TROUBLE 2108Z

PAP
46

GE-EPDs

	CE	BW	WW	YW	MK	TM	CM	SC	DC	YG	CW	RE	MB	\$TPI
EPDS	11	1	73	114	28	64	9	1.4	16	.03	39	.47	.5	98
%Rank	45	50	40	45	25	30	15	10	10	90	40	80	15	55

Act. BW: 70 • Adj. WW: 525 • Adj. YW: 754 • UFAT: 0.22 • UREA: 10.18 • UIMF: 3.505

Lot 41 is one we wouldn't be parting with if we didn't already have several full sisters. Sired by the proven MAGS Federal Reserve and out of CNOC Gemini, the cow that produced our high-selling bull in last years' sale, CNOC Made You Look is an eye-catching female with a world of future. Her femininity and angularity is coupled with her sound structure and attractive build to create a fault-free female. Raised by a 11 year-old recipient dam, she got off to a slow start, but has gotten better and better every day since weaning. Bet on the pedigree and the potential and bid with confidence!

Yearling Open Heifers



LOT 42



CONNELY CRAFTSMAN • Sire of Lot 42

42 OLIM MIDNIGHT DREAM 509M

LIM-FLEX(50/44.8) • COW • HOMO POLLED (T) • HET BLACK (T)
02/28/2024 • OLIM 509M • LFF3327141

PAP 36	SITZ RESILIENT 10208		SITZ STELLAR 726D										
	CONNELY CRAFTSMAN BLACK CATHY OF CONANGA 8521		SITZ MISS BURGESS CONNELY NIOBRARA 5451 BLACK CARLA OF CONANGA 450										
GE-EPDs	WULFS UPGRADE 0500U		JLWM DIRE STRAYTS 4109P										
	KEVN ZANETA 295Z KEVN WHISKEY LULLABY		WULFS KYAH 0500K RGMA NIGHT RIDER 73N KEVN SENTIMENTAL 620S										
CE	BW	WW	YW	MK	TM	CM	SC	DC	YG	CW	RE	MB	\$TPI
EPDS	8	1.6	71	120	34	70	5	13	-2	24	.74	.33	78
%Rank	85	65	45	30	2	10	70	-	50	35	85	35	90

Act. BW: 80 • Adj. WW: 530 • Adj. YW: 890 • UFAT: 0.23 • UREA: 11.76 • UIMF: 4.51
It's difficult to part with some of these replacement heifers, but our grass resources won't let us keep them all! Here's a heifer sired by Connealy Craftsman, an Angus bull that needs no introduction. He was the most widely used sire in the Angus breed in 2024 with over 4,000 registered progeny. This heifer has a genuine maternal look and the genetic values to be an asset to any program!

43 OLIM MARGARITA 461M

LIM-FLEX(37/33.3) • COW • HOMO POLLED (T) • HOMO BLACK (T)
03/03/2024 • OLIM 461M • LFF3327143

PAP 37	BASIN PAYWEIGHT 1682		BASIN PAYWEIGHT 006S										
	B/R MVP 5247 B/R BLOSSOM 3254		21AR O LASS 7017 B/R DESTINATION 7222-1148 B/R BLOSSOM 1102										
GE-EPDs	MAGS FEDERAL RESERVE ET		MAGS CABLE										
	OLIM KYMBER 237K OLIM ENCHANTED BEAUTY 755E		CJSL 4357B ET COTTAGE LAKE BIG STAR KEVN SATISFACTION 658S										
CE	BW	WW	YW	MK	TM	CM	SC	DC	YG	CW	RE	MB	\$TPI
EPDS	15	-3	76	125	26	65	12	14	-0.2	52	.62	.56	130
%Rank	5	25	30	20	40	25	1	-	35	80	10	55	10

Act. BW: 68 • Adj. WW: 678 • Adj. YW: 958 • UFAT: 0.26 • UREA: 10.84 • UIMF: 3.80
Lot 43 is a 37% Lim-flex female sired by the proven cow maker, B/R MVP 5247. We admire her curve-bending EPD profile going from a -3 BW to a 125 yearling weight. Couple this with a CEM that ranks in the top 1% of the breed, and STAY that ranks in the top 15% of the breed and you have the makings of a great cow! You'll love the length, the body and the overall performance of this brood cow prospect!

44 OLIM MADDY 531M

LIM-FLEX(34/29.6) • COW • HOMO POLLED (T) • HOMO BLACK (T)
02/11/2024 • OLIM 531M • LFF3327140

PAP 36	BASIN PAYWEIGHT 1682		BASIN PAYWEIGHT 006S										
	B/R MVP 5247 B/R BLOSSOM 3254		21AR O LASS 7017 B/R DESTINATION 7222-1148 B/R BLOSSOM 1102										
GE-EPDs	COLE GENESIS 86G		HUNT CREDENTIALS 37C ET										
	OLIM KAILYNN 216K CAIT DOLLY 690D ET		COLE MISS XRATED 354A PVF INSIGHT 0129 AUTO AMERIE 228A										
CE	BW	WW	YW	MK	TM	CM	SC	DC	YG	CW	RE	MB	\$TPI
EPDS	12	1.8	86	142	30	72	10	15	0	60	.7	.55	143
%Rank	30	70	10	5	15	10	5	-	20	85	3	40	10

Act. BW: 79 • Adj. WW: 587 • Adj. YW: 887 • UFAT: 0.26 • UREA: 10.72 • UIMF: 3.815
Not to be outdone, here is another MVP daughter that offers even higher weaning and yearling genetic values than Lot 43 with both figures landing her in the top 10% and 5% of the breed respectively. Complementing these growth numbers, she's in the top 10 percentile for both docility and marbling! Plus, she's a granddaughter of the 2014 NWSS Grand Champion Limousin Female, AUTO Amerie 228A!

45 OLIM MOLLY 524M

LIM-FLEX(75/64) • COW • HET POLLED (T) • HET BLACK (T)
03/01/2024 • OLIM 524M • LFF3312679

PAP 36	CELL ENVISION 7023E		AHCC BARN BURNER B907											
	VL HUNKER DOWN 003H KORC SNOW ANGEL 301A		PBRS ZSA ZSA 246Z WULFS XISTANCE V638X VL SNOW PRINCESS											
GE-EPDs	CONNELY FINAL PRODUCT		CONNELY PRODUCT 568											
	KEVN ALLURE 331A KEVN 423P		EBONISTA OF CONANGA 471 AUTO INTEREST FREE 172K KEVN CROWN JEWEL 914J											
CE	BW	WW	YW	MK	TM	CM	SC	DC	YG	CW	RE	MB	\$TPI	
EPDS	8	.6	71	120	20	55	3	.9	22	-34	35	1.06	.08	103
%Rank	85	40	45	30	90	80	95	45	1	10	50	10	90	45

Act. BW: 71 • Adj. WW: 565 • UFAT: 0.22 • UREA: 10.90 • UIMF: 3.85
If you prefer a little higher percentage Lim-Flex, OLIM Molly may be just the ticket! She's sired by VL Hunker Down who is one of Wulf Cattle's herd sires and the sire of 2 members of our Denver Pen (Lot 2 and 3). Her stayability EPD ranks her in the top 4% of the breed and she comes by that naturally as her dam has recorded 10 calves over the course of her lifetime.

46 OLIM MIRANDA 434M

PERCENTAGE(78/69.1) • COW • HOMO POLLED (T) • HET BLACK (T)
02/19/2024 • OLIM 434M • NXF3312664

PAP 39	MAGS CABLE		MAGS APPLESEED											
	OLIM KEYSTONE 23K OLIM FORTUNA 860F		MAGS ZEQUIN WULFS ALLIED FORCE C303A CAIT YELLOW ROSE 128Y											
GE-EPDs	WULFS COOLEY 3710C B2F		RUNL STETSON 850S											
	OLIM GRETA 967G OLIM DARK CHOCOLATE 675D		WULFS ABET 3710A WULFS XTRACTOR X233X KEVN XCLAMATION 026X											
CE	BW	WW	YW	MK	TM	CM	SC	DC	YG	CW	RE	MB	\$TPI	
EPDS	13	.2	72	111	35	71	8	.88	18	-.28	32	.79	.17	103
%Rank	20	40	30	35	1	4	25	40	2	40	55	50	60	45

Act. BW: 71 • Adj. WW: 626 • Adj. YW: 941 • UFAT: 0.29 • UREA: 9.88 • UIMF: 3.085
Study the balanced EPD profile of this female and imagine the mating possibilities. She posts 12 EPD's in the top 35 percent of the breed or better! She's a long necked, long spined, feminine female who has a big sweeping rib shape and is sound on the move. Just think of the kind of curve-bending genetics you can create with a heifer who features a 71 pound birthweight and a 941 pound adjusted yearling weight!

47 OLIM MOON DANCER 533M

PUREBRED(93/80.5) • COW • HOMO POLLED (T) • BLACK
02/29/2024 • OLIM 533M • NPF3312678

CELL ENVISION 7023E
VL HUNKER DOWN 003H
KORC SNOW ANGEL 301A

AHCC BARN BURNER B907
PBR5 ZSA ZSA 246Z
WULFS XISTANCE V638X
VL SNOW PRINCESS
WULFS XCELLSIOR X252X
WULFS EDWINNA 7056E
WULFS DIAL PAD I013D ET
CAIT ZARA 262Z

WULFS GALLAGHER 7056G

OLIM JINX 153J

OLIM GEORGINA 982G

PAP
35

GE-EPDs

	CE	BW	WW	YW	MK	TM	CM	SC	DC	YG	CW	RE	MB	\$MTI
EPDS	11	1.4	76	118	23	61	5	.72	19	-.35	33	1.1	.12	118
%Rank	40	55	20	15	70	35	65	30	2	80	30	40	20	20

Act. BW: 90 • Adj. WW: 574 • Adj. YW: 866 • UFAT: 0.27 • UREA: 9.68 • UIMF: 2.345

If you liked Lot 2, 3 and 4, you're gonna love this female. She's a paternal sister to those bulls and the only purebred female we're offering in this year's sale! With the growth and performance that comes from VL Hunker Down and the maternal strength of Wulfs Gallagher, this is a mating made in heaven! These black polled purebred heifers are hard to make....and even harder to come by. Don't miss this opportunity!



"We must optimize marbling first, but keep that in balance with red meat yield. We have to figure out a solution for not over-fattening cattle today...It takes 2x more calories to produce 1 pound of fat versus 1 pound of muscle."

Dale R. Woerner, Ph.D.

Professor and Cargill Endowed Professor in Sustainable Meat Science
Department of Animal and Food Sciences, Texas Tech University

48 OLIM MAYBELLE 498M

PERCENTAGE(83/74.2) • COW • HOMO POLLED (T) • BLACK
02/07/2024 • OLIM 498M • NXF3312650

WULFS GALLAGHER 7056G
WZRK KALUA 0033K
WZRK 0033H

WULFS XCELLSIOR X252X
WULFS EDWINNA 7056E
HUNT CREDENTIALS 37C ET
WZRK DOWN UNDER 6055D
COLE CADILLAC 05C
COLE MISS AUSTIN 3157A
ALYN EMPIRE 768E
CAIT DELTA DAWN 679D ET

COLE FORTUNE 12F

OLIM KYLEIGH 246K

OLIM HOLLYWOOD 024H

PAP
35

GE-EPDs

	CE	BW	WW	YW	MK	TM	CM	SC	DC	YG	CW	RE	MB	\$MTI
EPDS	13	-1.8	68	100	30	64	7	.67	16	-.19	31	.58	.28	108
%Rank	20	10	40	55	10	20	40	65	10	60	60	75	40	35

Act. BW: 67 • Adj. WW: 542 • Adj. YW: 835 • UFAT: 0.34 • UREA: 8.54 • UIMF: 3.595

Lot 48 is a higher percentage (83%) daughter of WZRK Kalua and out of a first calf COLE Fortune female. Moderate framed, easy fleshing, long bodied and broody are accurate terms describing this functional female. Breed her to a performance-oriented purebred bull to make herd bulls or an Angus bull to efficient Lim-Flex females, the options are endless!



LOT 48

49 OLIM MIKALA 476M

LIM-FLEX(75/66.4) • COW • HOMO POLLED (T) • HET BLACK (T)
02/15/2024 • OLIM 476M • LFF3312659

MAGS CABLE
WULFS HIGH CARD C125H
EF XCLUSIVE

MAGS APPLESEED
MAGS ZEQUIN
CFLX WILD CARD
VVLC BLACK LUCY 416R
JCL LODESTAR 27L
RUNL 72L
WULFS WILLARD 5115W
KEVN ZEBRA KEEPER 237Z

RUNL STETSON 850S

OLIM GYPSY 935G

OLIM ENDLESS LOVE 742E

PAP
40

GE-EPDs

	CE	BW	WW	YW	MK	TM	CM	SC	DC	YG	CW	RE	MB	\$MTI
EPDS	13	-.3	62	99	26	58	8	1	18	-.35	25	.89	.15	93
%Rank	20	25	80	75	40	60	25	35	2	10	85	20	80	65

Act. BW: 72 • Adj. WW: 525 • Adj. YW: 755 • UFAT: 0.18 • UREA: 11.30 • UIMF: 2.585

Here is a moderate framed, muscular 75% Lim-Flex female. With two proven grand sires in her pedigree, MAGS Cable and RUNL Stetson, the guesswork is already taken out. Don't miss this moderate, efficient, functional female!

50 OLIM MIKALA 479M

LIM-FLEX(74/66.3) • COW • HOMO POLLED (T) • RED
02/20/2024 • OLIM 479M • LFF3312665

WULFS XCELLSIOR X252X
WULFS GAMEBOY C911G ET
MAGS DEALING MAGIC

WULFS SIRLOIN 3172S
WULFS MISSIVE 2258M
MAGS ZODIAC
BDHC TROUBLE 2108Z
MAGS AVIATOR
ALYN BACARDI BLACK
WULFS YUKON TRAIL 8084Y
CAIT ANGEL 302A

ALYN EL TORRO 83E ET

OLIM HERSHEY KISS 131H

CAIT CHERRY BOMB 536C

PAP
36

GE-EPDs

	CE	BW	WW	YW	MK	TM	CM	SC	DC	YG	CW	RE	MB	\$MTI
EPDS	12	2	79	121	33	72	5	.35	18	-.22	44	.8	.3	129
%Rank	30	75	20	30	4	10	70	95	2	30	25	30	50	10

Act. BW: 79 • Adj. WW: 615 • Adj. YW: 869 • UFAT: 0.11 • UREA: 11.80 • UIMF: 3.05

Lot 50 is not only the lone red female in our offering, she's also the only Gameboy female we are selling in this year's sale. She's long necked, long bodied and powerfully muscled....and take a look at her genetic values! Top 20% in weaning growth, top 30% in yearling growth and ribeye and top 4% in milk.



51

OLIM MYSTIC 455M

LIM-FLEX(65/57.3) · COW · HOMO POLLED (T) · HOMO BLACK (T)
04/17/2024 · OLIM 455M · LFF3312693

MAGS CABLE
OLIM KINGSMAN 21K B2F
OLIM FLICKA 837F

AHCC HEMI 0901E ET
OLIM JAMOCHA 110J

KEVN ZOREEN 239Z

MAGS APPLESEED
MAGS ZEQUIN
WULFS COOLEY 3710C B2F
CAIT CALIFORNIA GIRL 501C
S A V RESOURCE 1441
LVLS 9066U
WULFS WARBONNET 6254W
KEVN WISHFUL THINKING 945

PAP
57

GE-EPDs

	CE	BW	WW	YW	MK	TM	CM	SC	DC	YG	CW	RE	MB	\$TPI
EPDs	9	4.5	82	131	29	69	6	1	17	-.23	49	.9	.19	117
%Rank	75	>95	15	15	20	15	55	35	5	25	15	20	75	20

Act. BW: 91 · Adj. WW: 641 · UFAT: 0.25 · UREA: 12.44 · UIMF: 2.585

The youngest heifer in the sale by over a month, OLIM Mystic has offers much to be admired. She posts the second heaviest adjusted 205 day weight of the females and scanned the largest ribeye of any heifer in the offering. Plus, she charts in the top 15% in weaning and yearling growth, the top 20% in milk and the top 5% in docility. Don't miss this homozygous black, homozygous polled heifer!

PAP GUARANTEE

Pulmonary Arterial Pressure (PAP) testing of cattle has greatly reduced the incidence of brisket disease and is becoming a key selection criteria for high altitude cattle buyers. Dr. Tim Holt of Colorado State University PAP tested all of the sale cattle at the ranch (Alt. 4793 feet). At this altitude, PAP testing is not 100% accurate, but it does help identify cattle that could be of greater risk of developing brisket disease.

Based on this information, if you purchase bulls/heifers with a PAP score of 40 and below, we will guarantee those animals will PAP at altitude. If they fail to pass a PAP test following a 60-day acclimation period at altitude, buyers can return the animal for a complete refund.

PAP RISK CATEGORY FLOW CHART

OCHSNER CATTLE

Location of PAP Test · Kersey, Colorado

Elevation 4793 feet

Tested, February 20, 2025

Timothy N. Holt, DVM

Lisa Herrick, Certified PAP Technician

PAP Risk Factor · Moderate Elevation Test Chart

PAP test conducted at elevation 4000-5500 ft., (60% Repeatable, Predictive Value)

PAP Score	Use at Low Elev. (<4000 feet)	Use at Moderate Elev. (4000-5500 FEET)	Use at High Elev. (5500-7500 feet)	Use at Extreme (>7500 feet)
34-39	Low Risk	Low Risk	Low Risk	Low Risk
40-45	Low Risk	Low Risk	Moderate Risk	Moderate Risk
46-49	Moderate Risk	High Risk	Do Not Use	Do Not Use
>50	Moderate Risk	High Risk	Do Not Use	Do Not Use

* When selecting an animal based on a PAP measurement other factors besides those listed above should be considered such as genetics or pedigree, PAP EPDs, Systolic/Diastolic pressures, breed and previous illness, and genetic testing.

* Special consideration should be given to the amount of time the animal was exposed to elevation (>5500 ft) prior to testing. The predictability and repeatability of the PAP measurement improves with longer the exposure to higher elevation (minimum of 4 weeks is required).

* This chart is based on animals greater than 10 months of age. Testing older animals (>12 months) results in a higher predictive and repeatability measurement.

* Testing of younger animals (<12months) may result in a greater variability to the predictive and repeatability measurement.

Definitions:

* Repeatable or Repeatability percent is a term used to give strength to a given PAP score predicting that if a retest PAP was carried out later in life then the score would be close to or within the same category as the original measurement. For example, a PAP measurement taken below 4000 feet only has a 40% repeatable percent meaning that a repeat test only has a 40% chance of staying within the same risk category as the original test.

* Predictive Value—this term is closely related to repeatability percent but specifically says that the original score can accurately predict what that animal will retest in a higher elevation.

* Risk—Defined as the likelihood of an animal developing pulmonary hypertension themselves or being at risk for having a genetic predisposition for the disease

	CE	BW	WW	YW	MK	TM	CM	SC	DC	YG	CW	RE	MB	\$TPI
B/R MVP 5247 ANGUS · Homo Polled · Homo Black · S: BASIN PAYWEIGHT 1682 · D: B/R BLOSSOM 3254	18	-1.5	86	145	25	68	14		13	0.1	70	0.67	0.8	163
COLE GENESIS 86C PUREBRED(87/77.3) · Homo Polled · Black · S: HUNT CREDENTIALS 37C ET · D: COLE MISS XRATED 354A	16	-1.5	65	102	34	66	11	0.5	12	-0.03	40	0.52	0.7	127
DLTM JOUSTER 107J LIM-FLEX(42/36.9) · Homo Polled · Homo Black · S: DEBV GLADIATOR 917G · D: SJH FRONTIER GAL 8707	17	-1.5	64	102	29	64	12	0.9	15	0.04	44	0.66	0.37	113
MAGS FEDERAL RESERVE ET LIM-FLEX(50/44.7) · Homo Polled · Homo Black · S: MAGS CABLE · D: CJSL 4357B ET	13	0.5	69	102	32	66	14	1.4	15	0.16	32	0.05	0.72	85
MAGS KOOPER RUSH 2622K ET LIM-FLEX(54/49) · Homo Polled · Het Black · S: MAGS FEDERAL RESERVE ET · D: MAGS DARE TO LOVE ME ET	12	0.4	77	120	22	61	10	0.7	17	0.1	43	0.25	0.75	110
OLIM JACKPOT 209J LIM-FLEX(68/58.3) · Double Polled · Double Black · S: CELL ENVISION 7023E · D: CAIT ETERNAL FLAME 700E ET	10	0.1	84	138	25	67	7	1.5	18	-0.23	58	1.32	0.22	141
OLIM KEYSTONE 23K LIM-FLEX(75/65.9) · Homo Polled · Het Black · S: MAGS CABLE · D: OLIM FORTUNA 860F	16	0.1	73	112	31	68	11	1.1	18	-0.21	26	0.8	0.28	93
OLIM KINGSMAN 21K B2F LIM-FLEX(56/49.8) · Homo Polled · Homo Black · S: MAGS CABLE · D: OLIM FLICKA 837F	14	2.2	80	129	31	71	11	1	8	-0.14	53	0.85	0.41	131
VL HUNKER DOWN 003H PUREBRED(93/82.9) · Homo Polled · Homo Black · S: CELL ENVISION 7023E · D: KORC SNOW ANGEL 301A	12	0.4	87	143	15	58	8	1.1	17	-0.46	49	1.5	-0.08	138
WULFS GALLAGHER 7056G LIM-FLEX(75/66.7) · Homo Polled · Red · S: WULFS XCELLSIOR X252X · D: WULFS EDWINNA 7056E	20	-5.2	55	76	30	58	9	0.4	17	0	18	0.26	0.64	104
WULFS GAMEBOY C911G ET PERCENTAGE(80/71.8) · Homo Polled · Black · S: WULFS XCELLSIOR X252X · D: MAGS DEALING MAGIC	9	4.6	104	158	30	82	2	0.2	14	-0.33	66	1.23	0.31	175
WULFS HIGH CARD C125H LIM-FLEX(62/54.8) · Homo Polled · Homo Black · S: MAGS CABLE · D: EF XCLUSIVE	11	2.4	79	132	30	69	6	1.7	14	-0.1	41	0.41	0.43	97
WULFS JAZI 8402J PUREBRED(90/77.9) · Homo Polled · Homo Black · S: WULFS GAMEBOY C911G ET · D: WULFS FLORRY 8402F	17	-1.3	63	96	26	57	8	0.4	8	-0.3	36	0.96	0.08	125
WULFS KUT ABOVE 7118K LIM-FLEX(75/67.2) · Homo Polled · Red · S: WULFS HORTON 7358H · D: WULFS ELDERBERRY 7118E ET	8	3.2	111	170	33	89	4	2.2	19	-0.36	76	1.32	0.26	171
WZRK KALUA 0033K PUREBRED(87/78.1) · Homo Polled · Red · S: WULFS GALLAGHER 7056G · D: WZRK 0033H	11	-1.1	72	101	32	68	5	1	19	-0.11	32	0.3	0.48	113



WATCH & BID ONLINE FOR FREE AT DVAUCTION.COM

Buying online is as easy as 1, 2, 3 ...

1. Create an account at www.dvauction.com under the "register" tab.
2. Apply for bidding approval by clicking on the "details" tab at least 24 hours prior to the auction—a DV representative will notify you once you have been approved.
3. Tune in for the sale and make your purchases!
After the sale, contact the sale manager or owner to arrange transportation and payment. High speed internet is required for successful bidding. Be sure to check the lag-time monitor in the top left corner to ensure real-time broadcasts.

PROXY BIDDING: If you can't make time to watch the sale, register a proxy bid and let our system represent your bid while you're away. Look for the "proxy bid" tab on the auction listing, and fill in your maximum bids. We'll handle the rest!

Having troubles?

During the auction, you can type a message to the operator at any time for assistance. Our full-time support team can also always be reached at 402.474.5557.

# OF LOTS		GROSS	AVERAGE
_____	Bulls	_____	_____
_____	Females	_____	_____
_____	TOTALS	_____	_____



MISSION

To produce and market balanced, complete, performance-oriented seedstock that improve our customer's profitability, while simultaneously bringing glory to God by the way we steward the land, livestock, and people He places under our care.



2005 Ruhl Drive
Guthrie, OK 73044

Pasture To Plate Performance Sale

SATURDAY, MARCH 29, 2025

Live Auction • 1 p.m. MDT



OCHSNER
Limousin

KERSEY, CO